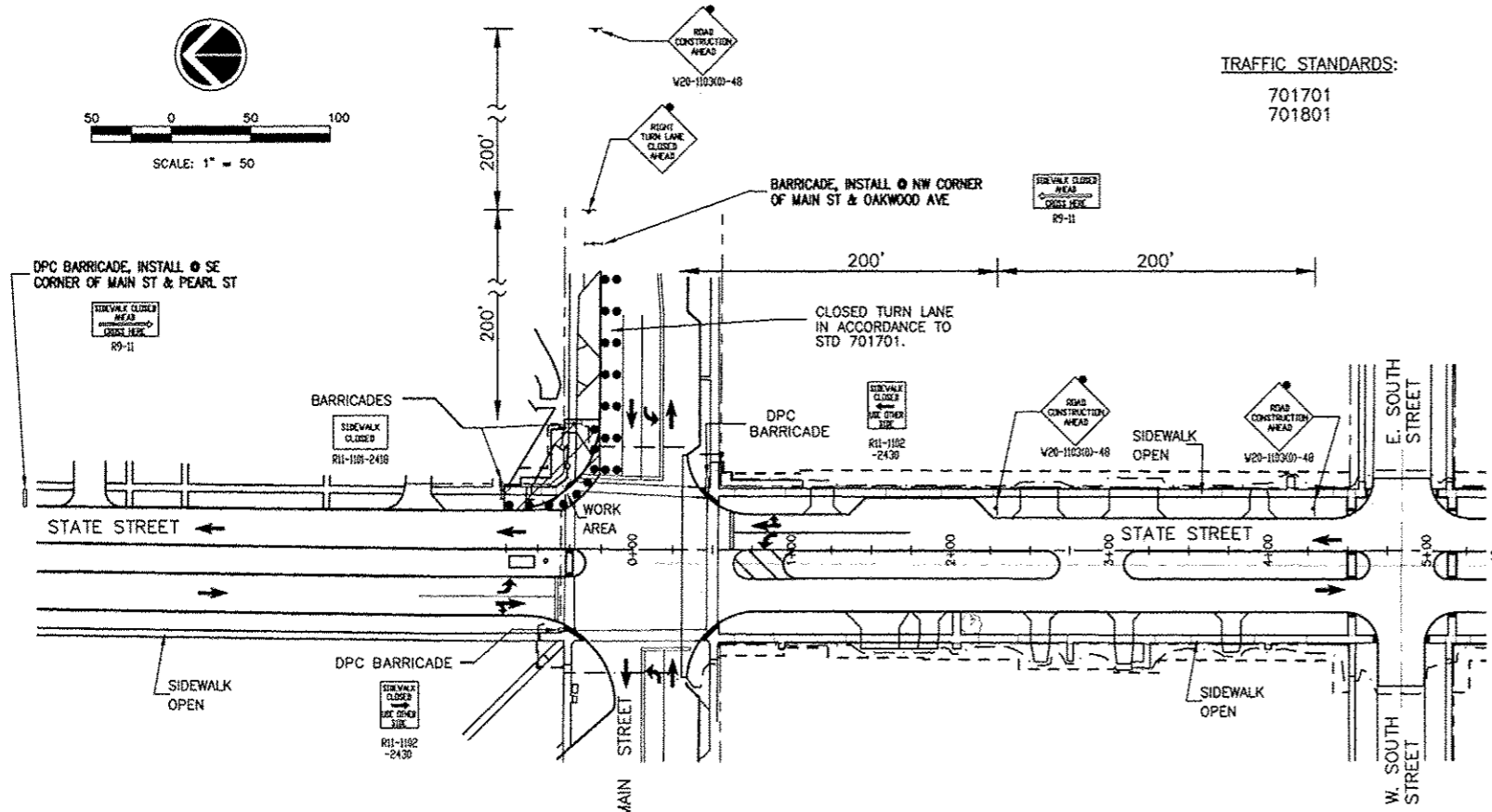


STATE STREET TRAFFIC CONTROL PLAN, STAGE 5A



TRAFFIC STANDARDS:
701701
701801

STAGE 5A / 5B TRAFFIC STATUS:

1. ALL TRAVEL LANES TO REMAIN OPEN ON STATE STREET AND MAIN STREET.
2. SIDEWALK CLOSURE ON ONLY ONE SIDE OF STATE STREET AT A TIME.

STAGE 5A / 5B CONSTRUCTION:

1. SAW CUT AND REMOVE SECTIONS OF THE EXISTING STREET AND SIDEWALK PAVEMENTS IN THE STAGE AREAS AS SHOWN AND SPECIFIED IN THE SPECIAL PROVISIONS UNDER TRAFFIC CONTROL AND PROTECTION.
2. CONSTRUCT NEW SECTIONS OF THE EXISTING STREET AND SIDEWALK PAVEMENTS IN THE STAGE AREAS AS SHOWN AND SPECIFIED IN THE SPECIAL PROVISIONS UNDER TRAFFIC CONTROL AND PROTECTION.

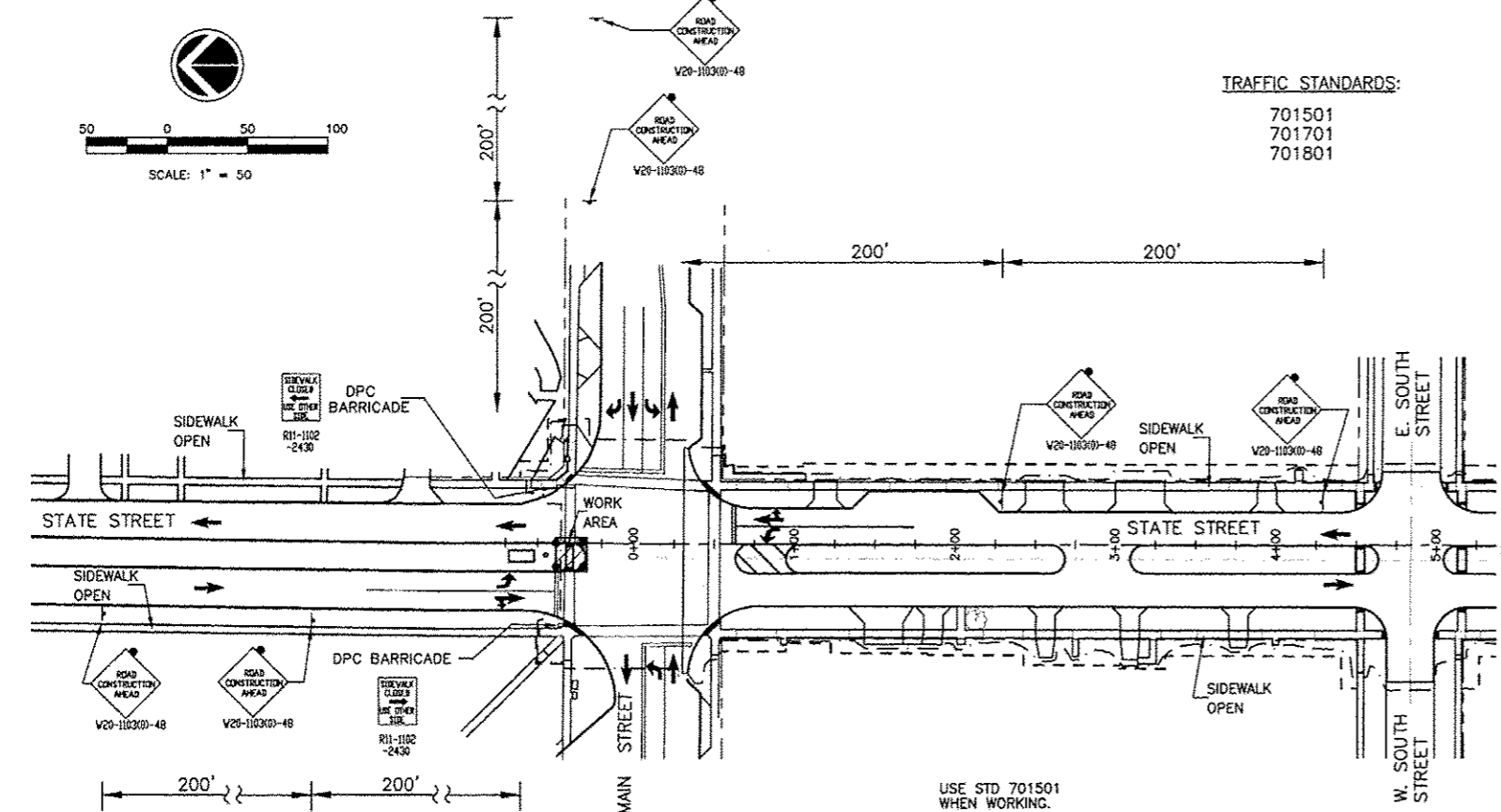
STAGE 5A / 5B TRAFFIC CONTROL NOTES:

1. MAINTAIN PEDESTRIAN ACCESS TO PROPERTY / BUSINESSES AS LONG AS POSSIBLE. SAFETY FENCE SHALL BE ERECTED BETWEEN ALL OPEN PEDESTRIAN AREAS AND ADJACENT WORK AREAS.
2. CONFORM TO STANDARD 701801 FOR SIDEWALK CLOSURES. SIDEWALKS ON BOTH SIDES OF THE STREET SHALL NOT BE CLOSED AT THE SAME TIME.
3. COORDINATE WITH LOCAL RESIDENTS AND BUSINESSES A MINIMUM OF 48 HOURS PRIOR TO RESTRICTING ACCESS TO DRIVEWAYS AND BUSINESS ENTRANCES. PEDESTRIAN ACCESS SHALL BE MAINTAINED AT ALL TIMES.
4. IF A PROPERTY AND / OR BUSINESS HAS TWO ACCESS DRIVEWAYS AS DETERMINED BY THE ENGINEER, THE REMOVAL AND REPLACEMENT OF THE TWO DRIVEWAYS SHALL NOT OCCUR SIMULTANEOUSLY. ONE PAVED DRIVEWAY SHALL BE OPEN TO THE PROPERTY AND / OR BUSINESS AT ALL TIMES.

LEGEND:

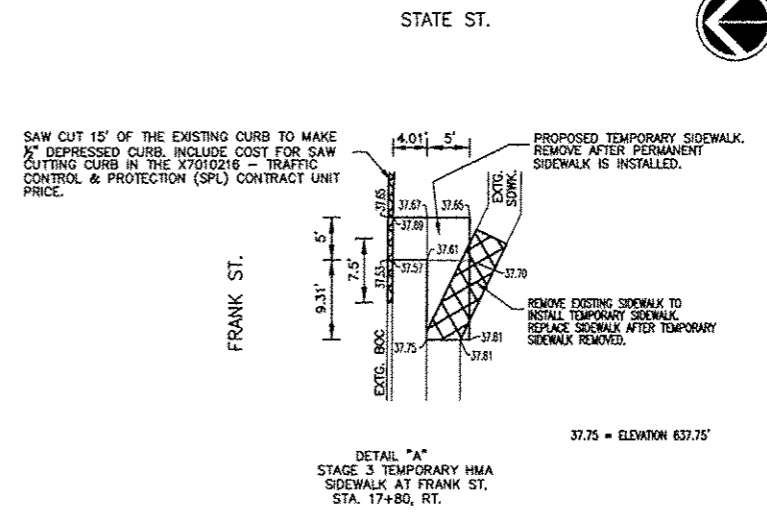
- WORK AREAS
- TYPE III BARRICADE WITH FLASHERS
- DETECTABLE PEDESTRIAN CHANNELLIZING (DPC) BARRICADE
- BARRICADE OR DRUM WITH LIGHT
- SIGN WITH FLASHING LIGHT
- SIGN ON PORTABLE OR PERMANENT SUPPORT
- DRUM WITH LIGHT
- VERTICAL BARRICADE WITH LIGHT
- INDICATES DIRECTION OF TRAFFIC FLOW ONLY (NO PAVEMENT MARKING)

STATE STREET TRAFFIC CONTROL PLAN, STAGE 5B



TRAFFIC STANDARDS:
701501
701701
701801

USE STD 701501 WHEN WORKING.



REVISIONS	DESCRIPTION	DATE
No.		

Missman, Inc.
Professional Engineers & Land Surveyors

Rock Island, IL • Bettendorf, IA • Rockford, IL • Sycamore, IL
(309) 768-7644 • (309) 344-0280 • (616) 965-6400 • (615) 995-3825
www.missman.com

STATE STREET RE-CONSTRUCTION
GENESEO, ILLINOIS

TRAFFIC CONTROL PLAN -
STAGES 5A & 5B

Missman Project No: A10M008
File Name: A10M008 TRAFFIC CONTROL.dwg
© COPYRIGHT 2013 ALL RIGHTS RESERVED
Field Book No: ###
Drawn By: JNM
Checked By: JLM
Date: 11/19/2012