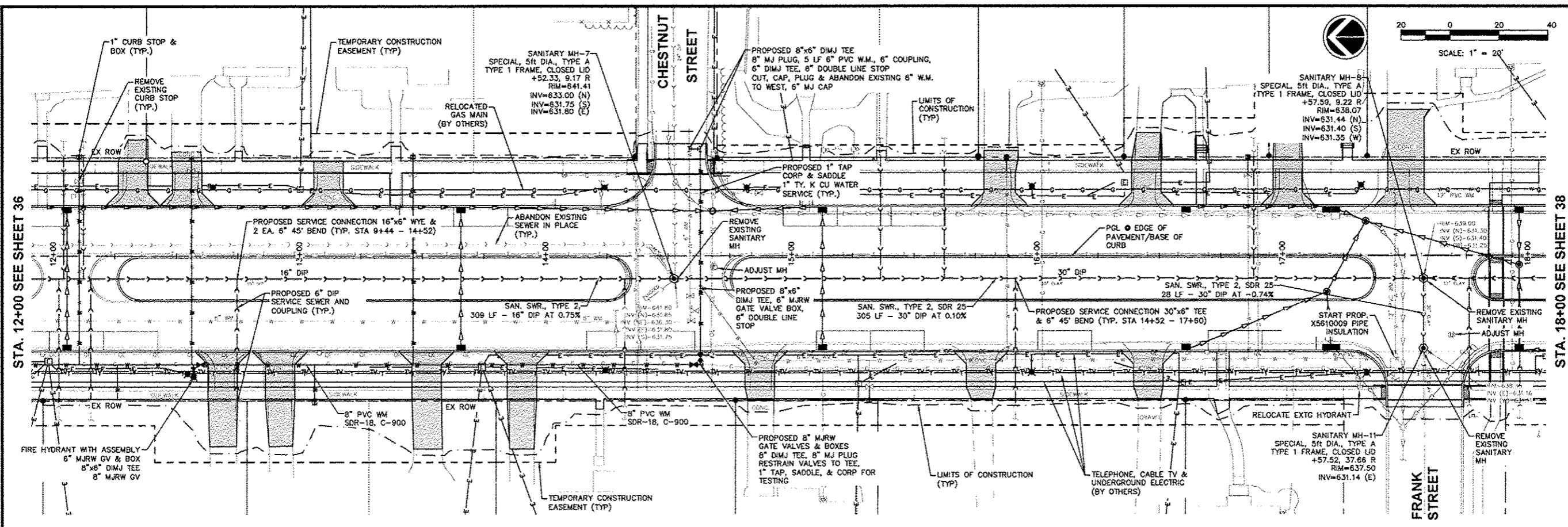


G:\2010\UN10M008-Geneseo - S State St. Sewer\WaterDrawings\Plot\A10M008 UTILITY PLAN PROFILES.dwg, 3/7/2013 9:40:27 AM, jefm



NO.	REVISIONS	DESCRIPTION	DATE

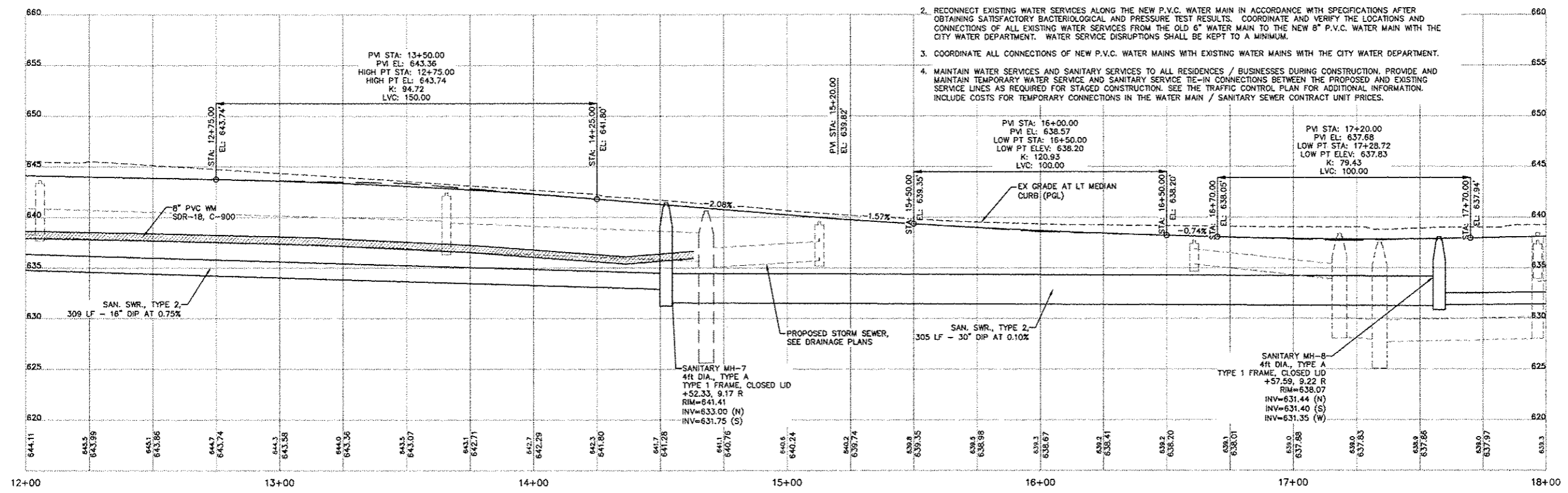
Missman, inc.
Professional Engineers & Land Surveyors

Rock Island, IL • Bettendorf, IA • Rockford, IL • Sycamore, IL
(309) 789-7844 • (563) 344-0260 • (815) 965-6400 • (815) 882-3825
www.missman.com

PROJECT: STATE STREET

HORIZONTAL SCALE: 1" = 20'
VERTICAL SCALE: 1" = 5'

- WATER/SEWER NOTES:**
1. MAINTAIN APPROPRIATE HORIZONTAL AND VERTICAL SEPARATION BETWEEN THE PROPOSED WATER MAIN AND THE EXISTING SANITARY SEWERS / EXISTING STORM SEWERS IN ACCORDANCE WITH THE STANDARD SPECIFICATIONS FOR WATER AND SEWER MAIN CONSTRUCTION IN ILLINOIS AND / OR TITLE 35, SUBTITLE F, CHAPTER II, PART 653.119 OF THE ILLINOIS ADMINISTRATIVE CODE.
 2. RECONNECT EXISTING WATER SERVICES ALONG THE NEW P.V.C. WATER MAIN IN ACCORDANCE WITH SPECIFICATIONS AFTER OBTAINING SATISFACTORY BACTERIOLOGICAL AND PRESSURE TEST RESULTS. COORDINATE AND VERIFY THE LOCATIONS AND CONNECTIONS OF ALL EXISTING WATER SERVICES FROM THE OLD 6" WATER MAIN TO THE NEW 8" P.V.C. WATER MAIN WITH THE CITY WATER DEPARTMENT. WATER SERVICE DISRUPTIONS SHALL BE KEPT TO A MINIMUM.
 3. COORDINATE ALL CONNECTIONS OF NEW P.V.C. WATER MAINS WITH EXISTING WATER MAINS WITH THE CITY WATER DEPARTMENT.
 4. MAINTAIN WATER SERVICES AND SANITARY SERVICES TO ALL RESIDENCES / BUSINESSES DURING CONSTRUCTION. PROVIDE AND MAINTAIN TEMPORARY WATER SERVICE AND SANITARY SERVICE TIE-IN CONNECTIONS BETWEEN THE PROPOSED AND EXISTING SERVICE LINES AS REQUIRED FOR STAGED CONSTRUCTION. SEE THE TRAFFIC CONTROL PLAN FOR ADDITIONAL INFORMATION. INCLUDE COSTS FOR TEMPORARY CONNECTIONS IN THE WATER MAIN / SANITARY SEWER CONTRACT UNIT PRICES.



STATE STREET RE-CONSTRUCTION
GENESEO, ILLINOIS

UTILITY PLAN AND PROFILE - 4

Missman Project No: A10M008
File Name: A10M008 UTILITY PLAN
COPYRIGHT © 2013 ALL RIGHTS RESERVED
Field Book No: #####
Drawn By: WKS
Checked By: JLM
Date: 11/19/2012