

INDEX OF SHEETS

- 1 COVER SHEET  
2 TYPICAL SECTIONS

STANDARDS:	701006-04	TRAFFIC CONTROL
	701306-03	TRAFFIC CONTROL
	701301-04	TRAFFIC CONTROL
	701311-03	TRAFFIC CONTROL
	701901-02	TRAFFIC CONTROL DEVICES
	780001-03	PAVEMENT MARKINGS

STATE OF ILLINOIS  
DEPARTMENT OF TRANSPORTATION  
DIVISION OF HIGHWAYS  
PLANS FOR PROPOSED  
SURFACE TRANSPORTATION RURAL  
CRAWFORD COUNTY  
SECTION 11-00097-00-RS  
FAS 696 (CH 6)  
PROJECT RS-0696 (109)  
JOB NO. C-97-076-12

SUMMARY OF QUANTITIES

2,050	FOOT	SHORT-TERM PAVEMENT MARKING REMOVAL	XX003140*
1	L SUM	TRAFFIC CONTROL AND PROTECTION, (SPECIAL)	X7010216
138	TON	AGGREGATE SURFACE COURSE, TYPE B	40200800
5,694	GALLON	BITUMINOUS MATERIALS (PRIME COAT)	40600100
114	TON	AGGREGATE (PRIME COAT)	40600300
98	SQ YD	HOT-MIX ASPHALT SURFACE REMOVAL-BUTT JOINT	40600982
72	SQ YD	TEMPORARY RAMP	40600990
7,043	TON	HOT-MIX ASPHALT BINDER COURSE, IL-19.0, N70	40603085
6,632	TON	HOT-MIX ASPHALT SURFACE COURSE, MIX "C", N70	40603315
3,053	SQ YD	HOT-MIX ASPHALT SURFACE REMOVAL, 2-1/4"	44000158
55,110	SQ YD	AREA REFLECTIVE CRACK CONTROL TREATMENT	44300100
2,413	TON	AGGREGATE SHOULDERS, TYPE B	48101200
1	L SUM	MOBILIZATION	87100100
1	L SUM	TRAFFIC CONTROL AND PROTECTION, STANDARD 701306	70100460
4,100	FOOT	SHORT TERM PAVEMENT MARKING	70300100
51,007	FOOT	PAINT PAVEMENT MARKING-LINE 4"	78001110 *

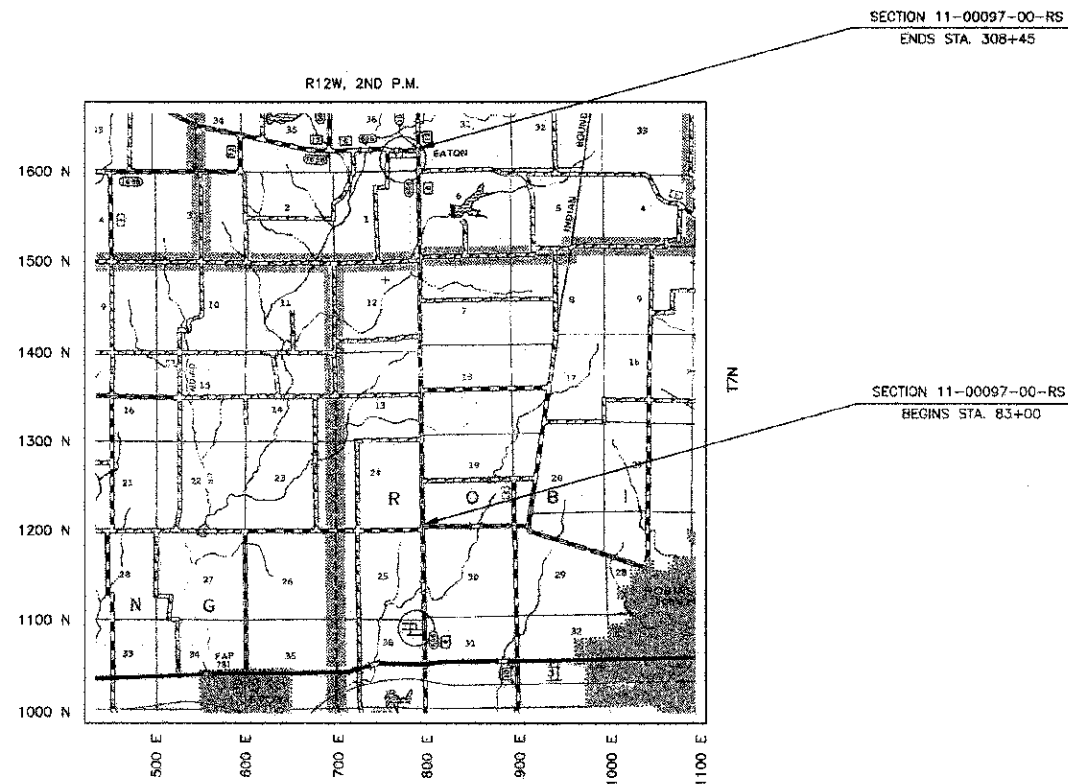
\* SPECIALTY ITEMS

FUNCTIONAL CLASS - RURAL MAJOR COLLECTOR

ADT = 1700

DESIGN SPEED = 50 MPH

TOLL FREE JOINT UTILITY LOCATING  
INFORMATION FOR EXCAVATORS (J.U.L.I.E.)  
TELEPHONE NO. 1-800-892-0123

LOCATION MAP

APPROXIMATE SCALE: 1 INCH = 1 MILE  
NET LENGTH = 22,545 FEET = 4.270 MILES



*John P. Connor* 02/22/2013  
ILLINOIS REGISTERED PROFESSIONAL ENGINEER # 55012  
LICENSE EXPIRES NOVEMBER 30, 2013  
CONNOR & CONNOR, INC.  
PROFESSIONAL DESIGN FIRM #184-000832

ILLINOIS DEPARTMENT OF TRANSPORTATION

APPROVED: February 22, 2013

CRAWFORD COUNTY ENGINEER

PASSED: 2-28-2013

DISTRICT SEVEN ENGINEER  
OF LOCAL ROADS & STREETSRELEASING FOR BID  
BASED ON LIMITED  
REVIEW 2/28/2013Deputy Director of Highways,  
REGION FOUR ENGINEER