

FINAL SUBMITTAL

MODEL: Default
 FILE: \\mhc\p\users\levy206\hanson\cdm\hanson\Project\313\130106\Phase3\CD\Road\Sheet\DMCC\EP-50001-TY1.dgn

CODE NO.	ITEM	UNIT	TOTAL QUANTITY	CONSTRUCTION CODE									
				80% FED / 20% STATE					80% FED / 20% STATE		100% STATE		
				URBAN					NHS BRIDGE PNLTY FUNDS				
				PEORIA CO	TAZEWELL CO	TAZEWELL CO	PEORIA CO	TAZEWELL CO	PEORIA CO	TAZEWELL CO	PEORIA CO	TAZEWELL CO	PEORIA CO
FAP 317/318	FAP 317/673	SN 090-2020			SN 072-0250	SN 090-0180			LANDSCAPING & MOWING	LANDSCAPING & MOWING			
	US 150 IL 29	US 150 IL 116	CULVERT			US 150 OVER IL 29	US 150 OVER IL RIVER						
20100110	TREE REMOVAL (6 TO 15 UNITS DIAMETER)	UNIT	32	32									
20100500	TREE REMOVAL, ACRES	ACRE	4.25	2.25	2.00								
20101000	TEMPORARY FENCE	FOOT	3,352	3,352									
20200100	EARTH EXCAVATION	CU YD	24,465	10,975	13,490								
20400800	FURNISHED EXCAVATION	CU YD	41,705	1,715	39,990								
20700220	POROUS GRANULAR EMBANKMENT	CU YD	103			103							
20800150	TRENCH BACKFILL	CU YD	1,984	674	1,310								
21001000	GEOTECHNICAL FABRIC FOR GROUND STABILIZATION	SQ YD	59			59							
21101615	TOPSOIL FURNISH AND PLACE, 4"	SQ YD	62,904	22,486	40,418								
21400100	GRADING AND SHAPING DITCHES	FOOT	2,212		2,212								
* 25000210	SEEDING, CLASS 2A	ACRE	8.00	1.50	6.50								
* 25000300	SEEDING, CLASS 3	ACRE	2.25	1.75	0.50								
* 25000324	SEEDING, CLASS 5B	ACRE	1.75	1.00	0.75								
* 25000400	NITROGEN FERTILIZER NUTRIENT	POUND	1,171	419	752								

* - SPECIALTY ITEM

TYLIN INTERNATIONAL
 200 S. WACKER DR.
 SUITE 1400
 CHICAGO, IL 60606
 TEL: 312-777-2900

USER NAME = kpeschel	DESIGNED - MPG	REVISED -
PLOT SCALE = 2.00' / in.	DRAWN - MPG	REVISED -
PLOT DATE = 12/13/2018	CHECKED - DAJ	REVISED -
	DATE - 11/28/2018	REVISED -

STATE OF ILLINOIS
 DEPARTMENT OF TRANSPORTATION

US 150 EASTBOUND McCLUGAGE BRIDGE PROJECT
 SUMMARY OF QUANTITIES

SCALE: NONE SHEET 1 OF 35 SHEETS STA. N/A TO STA. N/A

F.A.P. RTE.	SECTION	COUNTY	TOTAL SHEETS	SHEET NO.
317	[15B;((102-1),(14HB))BR]BR	PEO/TAZ	1361	7
ILLINOIS FED. AID PROJECT			CONTRACT NO. 68B46	
NHPP-YRP3(905)				

500-01

3 REV. 4/23/19 2 REV. 4/15/19 REV. 1/29/19

FINAL SUBMITTAL

MODEL: Default
FILE: \\mhc\p\2016\hanson\dom\hanson\project\317\3170106\Phase3\CAD\Road\Sheet\DMHCEP-317-S0002-TYLL.dgn

CODE NO.	ITEM	UNIT	TOTAL QUANTITY	CONSTRUCTION CODE											
				80% FED / 20% STATE					80% FED / 20% STATE		100% STATE				
				URBAN					NHS BRIDGE PNLTY FUNDS		0031 - LANDSCAPING				
				PEORIA CO FAP 317/318	TAZEWELL CO FAP 317/673	TAZEWELL CO SN 090-2020	PEORIA CO	TAZEWELL CO	PEORIA CO	TAZEWELL CO	PEORIA CO	TAZEWELL CO	PEORIA CO	TAZEWELL CO	
US 150 IL 29	US 150 IL 116	CULVERT			US 150 OVER IL 29	US 150 OVER IL RIVER	LANDSCAPING & MOWING	LANDSCAPING & MOWING							
* 25000500	PHOSPHORUS FERTILIZER NUTRIENT	POUND	1,171	419	752										
* 25000600	POTASSIUM FERTILIZER NUTRIENT	POUND	1,171	419	752										
25000750	MOWING	ACRE	13.50									5.00	8.50		
* 25003326	INTERSEEDING, CLASS 5C	ACRE	2.00	0.75	1.25										
* 25100115	MULCH, METHOD 2	ACRE	24.75	9.5	15.25										
* 25100635	HEAVY DUTY EROSION CONTROL BLANKET	SQ YD	8,815	2,118	6,697										
* 25100900	TURF REINFORCEMENT MAT	SQ YD	7,389		7,389										
* 28000250	TEMPORARY EROSION CONTROL SEEDING	POUND	2,090	591	1,499										
28000305	TEMPORARY DITCH CHECKS	FOOT	478	154	324										
28000400	PERIMETER EROSION BARRIER	FOOT	9,543	4,376	5,167										
28000500	INLET AND PIPE PROTECTION	EACH	45	8	37										
28000510	INLET FILTERS	EACH	96	69	27										
28001200	TEMPORARY HEAVY DUTY EROSION CONTROL BLANKET	SQ YD	32,406	4,235	28,171										

* - SPECIALTY ITEM

TYLIN INTERNATIONAL
200 S. WACKER DR.
SUITE 1400
CHICAGO, IL 60606
TEL: 312-777-2900

USER NAME = kpeschel
PLOT SCALE = 2.00' / in.
PLOT DATE = 12/13/2018

DESIGNED - MPG
DRAWN - MPG
CHECKED - DAJ
DATE - 11/28/2018

REVISED -
REVISED -
REVISED -
REVISED -

STATE OF ILLINOIS
DEPARTMENT OF TRANSPORTATION

US 150 EASTBOUND MCCLUGAGE BRIDGE PROJECT
SUMMARY OF QUANTITIES
SCALE: NONE SHEET 2 OF 35 SHEETS STA. N/A TO STA. N/A

F.A.P. RTE.	SECTION	COUNTY	TOTAL SHEETS	SHEET NO.
317	[15B;((102-1),(14HB))BR]BR	PEO/TAZ	1361	8
CONTRACT NO. 68B46				
ILLINOIS FED. AID PROJECT NHPP-YRP3(905)				

SOQ-02

3 REV. 4/23/19 2 REV. 4/15/19 REV. 2/8/19 REV. 1/29/19

FINAL SUBMITTAL

MODEL: Default
 FILE: \\mhc\p\2016\hanson\cdm\hanson\Project\313\130106Phase3\CD\Road\Sheet\DMHCCEP-68-S0003-TY1.dgn

CODE NO.	ITEM	UNIT	TOTAL QUANTITY	CONSTRUCTION CODE									
				80% FED / 20% STATE				80% FED / 20% STATE		100% STATE			
				URBAN				NHP		NHS BRIDGE PNLTY FUNDS			
				PEORIA CO FAP 317/318	TAZEWELL CO FAP 317/673	TAZEWELL CO SN 090-2020	PEORIA CO	TAZEWELL CO	PEORIA CO	TAZEWELL CO	PEORIA CO	TAZEWELL CO	
US 150 IL 29	US 150 IL 116	CULVERT			US 150 OVER IL 29	US 150 OVER IL RIVER	LANDSCAPING & MOWING	LANDSCAPING & MOWING					
28100107	STONE RIPRAP, CLASS A4	SQ YD	1,380								1,380		
28100109	STONE RIPRAP, CLASS A5	SQ YD	143			143							
28100705	STONE DUMPED RIPRAP, CLASS A3	SQ YD	1,170	10	495						665		
28200200	FILTER FABRIC	SQ YD	1,458			143					1,315		
31100100	SUBBASE GRANULAR MATERIAL, TYPE A	TON	26,125	6,741	19,384								
35300310	PORTLAND CEMENT CONCRETE BASE COURSE 8 1/2"	SQ YD	5,270	5,270									
35400400	PORTLAND CEMENT CONCRETE BASE COURSE WIDENING 9"	SQ YD	263	174	89								
40201000	AGGREGATE FOR TEMPORARY ACCESS	TON	5,057	852	4,205								
40600285	POLYMERIZED BITUMINOUS MATERIALS (PRIME COAT)	POUND	56,253		56,253								
40600295	POLYMERIZED BITUMINOUS MATERIALS (TACK COAT)	POUND	42,973	8,134	34,839								
40600825	POLYMERIZED LEVELING BINDER (MACHINE METHOD), N50	TON	639	550	89								
40600982	HOT-MIX ASPHALT SURFACE REMOVAL - BUTT JOINT	SQ YD	452	199	253								
40600990	TEMPORARY RAMP	SQ YD	287	168	119								
40603085	HOT-MIX ASPHALT BINDER COURSE, 1L-19.0, N70	TON	5,649	13	5,636								

* - SPECIALTY ITEM

TYLIN INTERNATIONAL
 200 S. WACKER DR.
 SUITE 1400
 CHICAGO, IL 60606
 TEL: 312-777-2900

USER NAME = kpeschel
 PLOT SCALE = 2.00' / in.
 PLOT DATE = 12/13/2018

DESIGNED - MPG
 DRAWN - MPG
 CHECKED - DAJ
 DATE - 11/28/2018

REVISED -
 REVISED -
 REVISED -
 REVISED -

STATE OF ILLINOIS
 DEPARTMENT OF TRANSPORTATION

US 150 EASTBOUND MCCLUGAGE BRIDGE PROJECT
 SUMMARY OF QUANTITIES

SCALE: NONE SHEET 3 OF 35 SHEETS STA. N/A TO STA. N/A

F.A.P. RTE.	SECTION	COUNTY	TOTAL SHEETS	SHEET NO.
317	[15B;((102-1),(14HB))BR]BR	PEO/TAZ	1361	9
CONTRACT NO. 68B46			SOQ-03	

REV. 4/23/19 REV. 4/15/19 REV. 2/8/19

FINAL SUBMITTAL

MODEL: Default
 FILE: \\mhc\p\2016\hanson\cdm\hanson\Project\317\3170106Phase3\CD\RoadSheet\DMCC\EP-50016-TYLL.dgn

CODE NO.	ITEM	UNIT	TOTAL QUANTITY	CONSTRUCTION CODE																
				URBAN						80% FED / 20% STATE				100% STATE						
				0003 - RDWY. RECON.		0010		0021 - SAFETY		0010 - BRIDGE REP.		0031 - LANDSCAPING								
				PEORIA CO FAP 317/318	TAZEWELL CO FAP 317/673	TAZEWELL CO SN 090-2020	PEORIA CO	TAZEWELL CO	PEORIA CO	TAZEWELL CO	PEORIA CO	TAZEWELL CO	PEORIA CO	TAZEWELL CO						
US 150 IL 29	US 150 IL 116	CULVERT			US 150 OVER IL 29	US 150 OVER IL RIVER	LANDSCAPING & MOWING	LANDSCAPING & MOWING												
* 66901001	REGULATED SUBSTANCES PRE-CONSTRUCTION PLAN	L SUM	1	0.5	0.5															
* 66901002	ON-SITE MONITORING OF REGULATED SUBSTANCES	CAL DA	20	10	10															
* 66901003	REGULATED SUBSTANCES FINAL CONSTRUCTION REPORT	L SUM	1	0.5	0.5															
67100100	MOBILIZATION	L SUM	1	0.5	0.5															
70107025	CHANGEABLE MESSAGE SIGN	CAL DAY	1,053	936	117															
70300100	SHORT TERM PAVEMENT MARKING	FOOT	6,749	2,319	4,430															
70300150	SHORT TERM PAVEMENT MARKING REMOVAL	SQ FT	2,251	774	1,477															
70300900	PAVEMENT MARKING TAPE, TYPE IV - LETTERS AND SYMBOLS	SQ FT	224	224																
70300904	PAVEMENT MARKING TAPE, TYPE IV 4"	FOOT	92,099	45,229	46,870															
70300906	PAVEMENT MARKING TAPE, TYPE IV 6"	FOOT	3,910	454	3,456															
70300912	PAVEMENT MARKING TAPE, TYPE IV 12"	FOOT	287		287															
70300924	PAVEMENT MARKING TAPE, TYPE IV 24"	FOOT	134	134																
70400100	TEMPORARY CONCRETE BARRIER	FOOT	5,286	2,285	3,001															
70400200	RELOCATE TEMPORARY CONCRETE BARRIER	FOOT	5,213	950	4,263															

* - SPECIALTY ITEM

TYLIN INTERNATIONAL
 200 S. WACKER DR.
 SUITE 1400
 CHICAGO, IL 60606
 TEL: 312-777-2900

USER NAME = kpeschel
 PLOT SCALE = 2.00' / in.
 PLOT DATE = 12/13/2018

DESIGNED - MPG
 DRAWN - MPG
 CHECKED - DAJ
 DATE - 11/28/2018

REVISED -
 REVISED -
 REVISED -
 REVISED -

STATE OF ILLINOIS
 DEPARTMENT OF TRANSPORTATION

US 150 EASTBOUND MCCLUGAGE BRIDGE PROJECT
 SUMMARY OF QUANTITIES

SCALE: NONE SHEET 16 OF 35 SHEETS STA. N/A TO STA. N/A

F.A.P. RTE.	SECTION	COUNTY	TOTAL SHEETS	SHEET NO.
317	[15B;((102-1),(14HB))BR]BR	PEO/TAZ	1361	22
ILLINOIS FED. AID PROJECT			CONTRACT NO. 68B46	
NHPP-YRP3(905)				

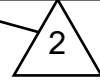
SOQ-16

3 REV. 4/23/19 2 REV. 4/15/19 REV. 1/29/19

EROSION CONTROL SCHEDULE - PEORIA CO.						MULCH METHOD 2	HD EROS CONTROL BLANKET	TEMP HD EROS CONTR BL	TEMP EROS CONTR SEED	TEMPORARY DITCH CHECKS	PERIMETER EROSION BARRIER	INLET & PIPE PROTECTION	INLET FILTERS	STONE DUMP RIP CL A3
ROADWAY	STAGE	STATION	OFFSET	STATION	OFFSET	(ACRE)	(SQ YD)	(SQ YD)	(POUND)	(FOOT)	(FOOT)	(EACH)	(EACH)	(SQ YD)
US 150/ RAMP A	1&2	2097+57.68	18' RT	1107+75.25	25' RT	0.25			25		726		2	
RAMP B / US 150	1&2	1206+12.98	34' RT	2106+89.94	48' RT	0.51			51					
US 150	1&2	2106+70.00	100' RT	2107+31.85	45' RT		358	716	22		756			
IL 29	1&2	613+12.12	79' LT	615+21.69	61' LT	0.14			14					
IL 29	1&2	613+16.62	36' RT	615+24.65	41' RT	0.12			12					
US 150	1&2	2108+48.67	43' RT	2109+02.00	100' RT		118	235	7					
US 150	1&2	2109+02.00	94' RT	2109+45.47	39' RT	0.14			14					
US 150	1&2	2109+35.00	87' RT	2110+14.21	37' RT		196	392	12					
IL 29	1&2	613+17.47	39' RT	615+93.61	20.4' RT						443			
IL 29	1&2	615+13.46	66' LT	616+23.27	63' LT						118			
US 150	1&2	2090+00		2101+00									2	
US 150	1&2	2101+00		2115+00								1	17	
IL 29	1&2	603+00		614+01								2	9	
RAMP A	1&2	1109+33.6		1110+10.3					70					
US 150 (SEE NOTE 2)	1&2	2115+84.7		2118+63.9							1877 1491			
IL 29	3	609+96.98	61' LT	610+21.10	71' LT	0.01			1					
IL 29	3	611+11.21	74' LT	611+36.32	67' LT	0.01			1					
IL 29	3	603+42.15	25' RT	606+82.12	157' RT	0.20			20					
IL 29	3	604+23.41	36' RT	605+38.95	76' RT	0.38			38					
IL 29 / RAMP E	3	605+38.80	30' RT	1504+54.70	18' RT	0.96			96					
IL 29 / RAMP E	3	606+82.26	162' RT	1505+11.83	32' RT	1.52			152					
IL 29	3	610+69.42	45' RT	612+17.21	56' RT	0.15			15					
IL 29	3	612+42.37	60' RT	613+67.86	84' RT	0.13			13					
IL 29	3	614+57.73	34' RT	615+24.70	43' RT	0.04			4					
IL 29	3	612+17.40	39' RT	614+65.00	41' RT		881	1762	54					
RAMP E	3	1505+11.83	32' RT	1506+35.91	31' RT		150	300	9					
RAMP E	3	1505+76.50	23' LT	1506+94.86	23' LT		415	830	25					
IL 29 / RAMP E	3	603+14.37	34' RT	1507+43.93	29' LT						1,291			
IL 29 / RAMP E	3	616+40.05	46' RT	1507+43.93	29' LT						469			
IL 29	3	609+92.25	58' LT	610+24.12	75' LT						44			
IL 29	3	611+10.23	76' LT	611+41.33	62' LT						38			
IL 29	3	604+24.73	36' RT	605+37.99	75' RT						191			
IL 29	3	604+29.16	38' RT	605+38.02	70' RT						180			
US 150	3	2101+00		2115+00									3	
IL 29	3	603+00		616+18.7						84		5	27	
RAMP E	3	1505+38.40	52.3' RT	1505+38.40	62.3' RT									5
IL 29	3	605+60.45	170' RT	605+60.45	180' RT									5
US 150	4	2105+37.58	82' LT	2105+62.37	117' LT	0.06			6		120			
US 150	4	2090+00		2101+00									2	
US 150	4	2101+00		2115+00									7	
TOTALS						4.6	2118	4235	591	154	4376	8	69	10

NOTE: THREE APPLICATIONS FOR TEMP EROS CONTROL SEEDING AND MULCH METHOD 2 AND TWO APPLICATIONS FOR TEMP HD EROS CONTROL BLANKET

NOTE 2: SEE SHEET 111 "RESTRICTED CONSTRUCTION AREAS - PEORIA CO." FOR LOCATION



FINAL SUBMITTAL

MODEL: Default
FILE: h:\moe\2016\hanson\dom\hanson_projects\13\0106\Phase3\CD\Road\Sheet\DMCC\EROS-Schedule01-ERK.dgn

EFK Moen, LLC
Civil Engineering Design

USER NAME = MSjllers	DESIGNED - MYS	REVISED - 4/16/2019
	DRAWN - MYS	REVISED - 4/22/2019
PLOT SCALE = 2.00' / in.	CHECKED - SSB	REVISED -
PLOT DATE = 12/10/2018	DATE - 11/28/2018	REVISED -

STATE OF ILLINOIS
DEPARTMENT OF TRANSPORTATION

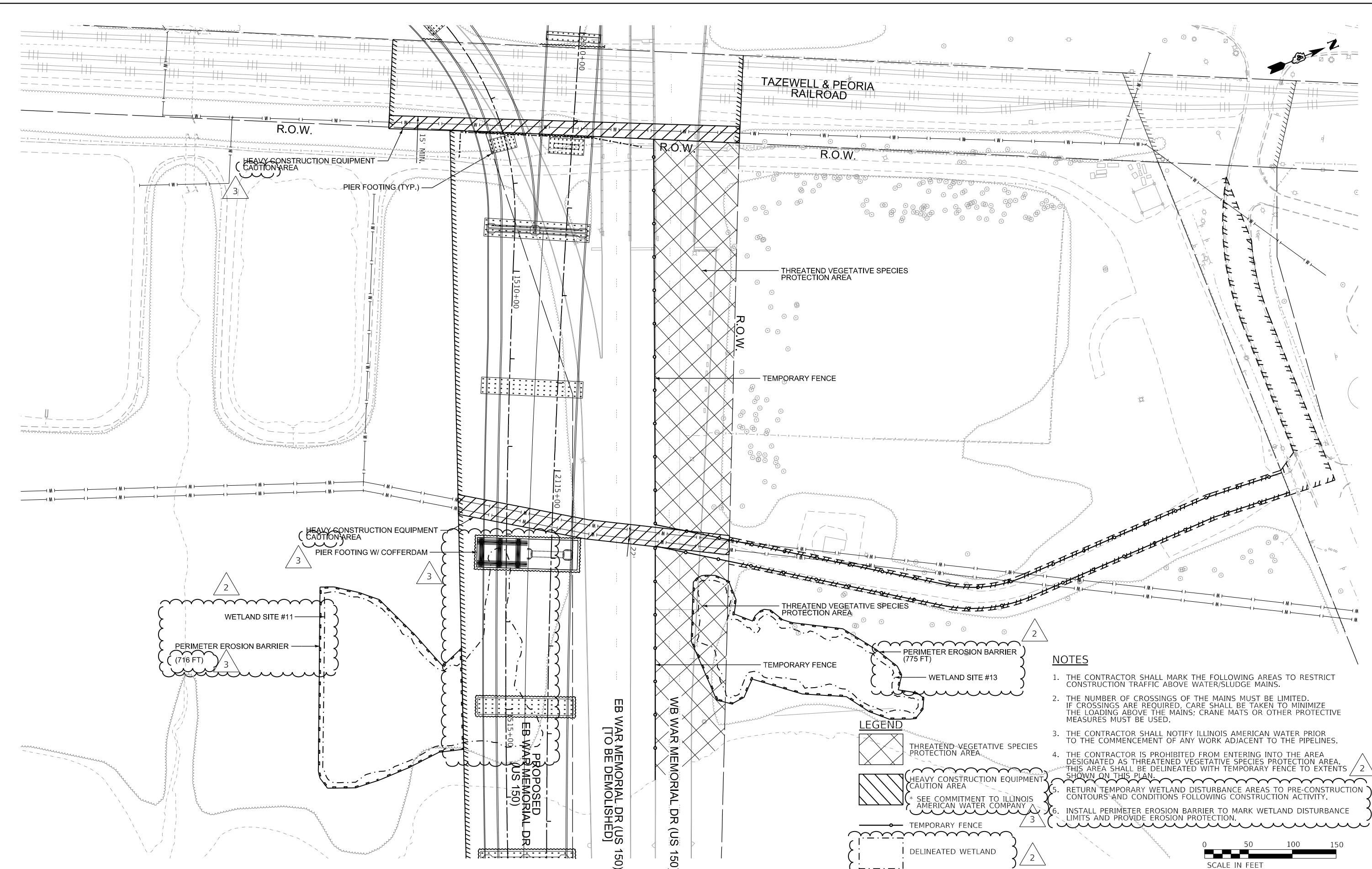
US 150 EASTBOUND McCLUGAGE BRIDGE PROJECT
EROSION CONTROL - SCHEDULE OF QUANTITIES

SCALE: NONE SHEET 1 OF 2 SHEETS STA. N/A TO STA. N/A

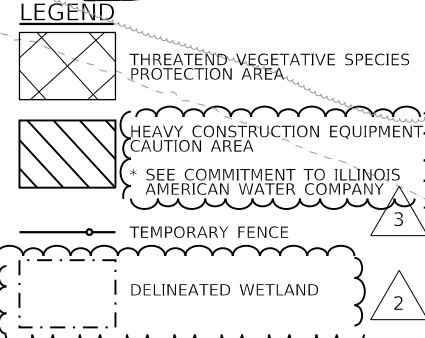
F.A.P. RTE.	SECTION	COUNTY	TOTAL SHEETS	SHEET NO.
317	[15B;{(102-1),(14HB)}BR]BR	PEORIA	1361	51
CONTRACT NO. 68B46				
ILLINOIS FED. AID PROJECT NHPP-YRP3(905)				

FINAL SUBMITTAL

MODEL: Default
 FILE: h:\mhc\proj\us150\2016\hanson\dom\hanson\project\document\13\0013\130106\phase-3\CADD\Road\Sheet\DMHCCEP-PC-1016-Corset_Rtr_Areas-TL1.dgn



- NOTES**
1. THE CONTRACTOR SHALL MARK THE FOLLOWING AREAS TO RESTRICT CONSTRUCTION TRAFFIC ABOVE WATER/SLUDGE MAINS.
 2. THE NUMBER OF CROSSINGS OF THE MAINS MUST BE LIMITED. IF CROSSINGS ARE REQUIRED, CARE SHALL BE TAKEN TO MINIMIZE THE LOADING ABOVE THE MAINS; CRANE MATS OR OTHER PROTECTIVE MEASURES MUST BE USED.
 3. THE CONTRACTOR SHALL NOTIFY ILLINOIS AMERICAN WATER PRIOR TO THE COMMENCEMENT OF ANY WORK ADJACENT TO THE PIPELINES.
 4. THE CONTRACTOR IS PROHIBITED FROM ENTERING INTO THE AREA DESIGNATED AS THREATENED VEGETATIVE SPECIES PROTECTION AREA. THIS AREA SHALL BE DELINEATED WITH TEMPORARY FENCE TO EXTENTS SHOWN ON THIS PLAN.
 5. RETURN TEMPORARY WETLAND DISTURBANCE AREAS TO PRE-CONSTRUCTION CONTOURS AND CONDITIONS FOLLOWING CONSTRUCTION ACTIVITY.
 6. INSTALL PERIMETER EROSION BARRIER TO MARK WETLAND DISTURBANCE LIMITS AND PROVIDE EROSION PROTECTION.



TYLIN INTERNATIONAL
 200 S. WACKER DR.
 SUITE 1400
 CHICAGO, IL 60606
 TEL: 312-777-2900

USER NAME = mgormely	DESIGNED - MPG	REVISED - 4/16/2019
	DRAWN - MPG	REVISED - 4/22/2019
PLOT SCALE = 100.00' / in.	CHECKED - DAJ	REVISED -
PLOT DATE = 4/22/2019	DATE - 11/28/2018	REVISED -

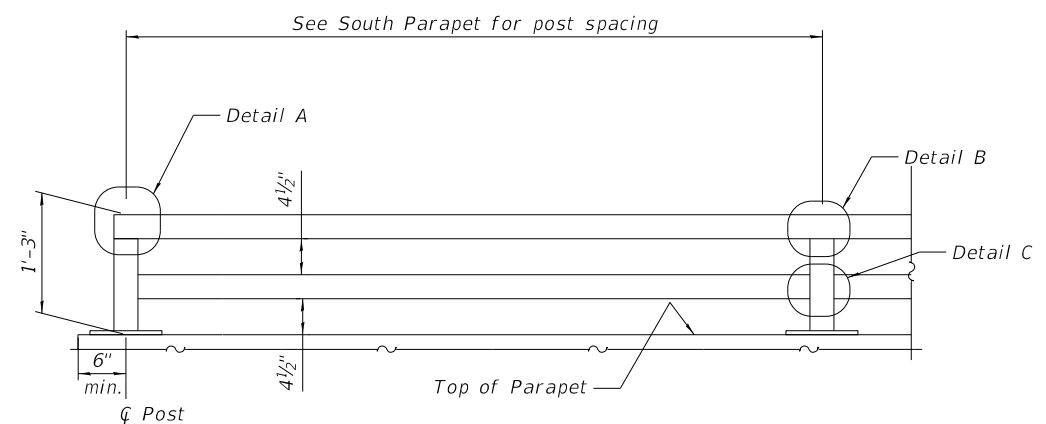
	REVISED -
--	-----------

STATE OF ILLINOIS
 DEPARTMENT OF TRANSPORTATION

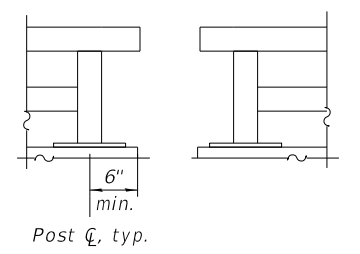
US 150 EASTBOUND McCLUGAGE BRIDGE PROJECT
 CONSTRUCTION CAUTION AREAS - PEORIA CO.

F.A.P. RTE.	SECTION	COUNTY	TOTAL SHEETS	SHEET NO.
317	[15B;((102-1),(14HB))]BR BR	PEORIA	1361	111
CONTRACT NO. 68B46				
ILLINOIS FED. AID PROJECT NHPP-YRP3(905)				

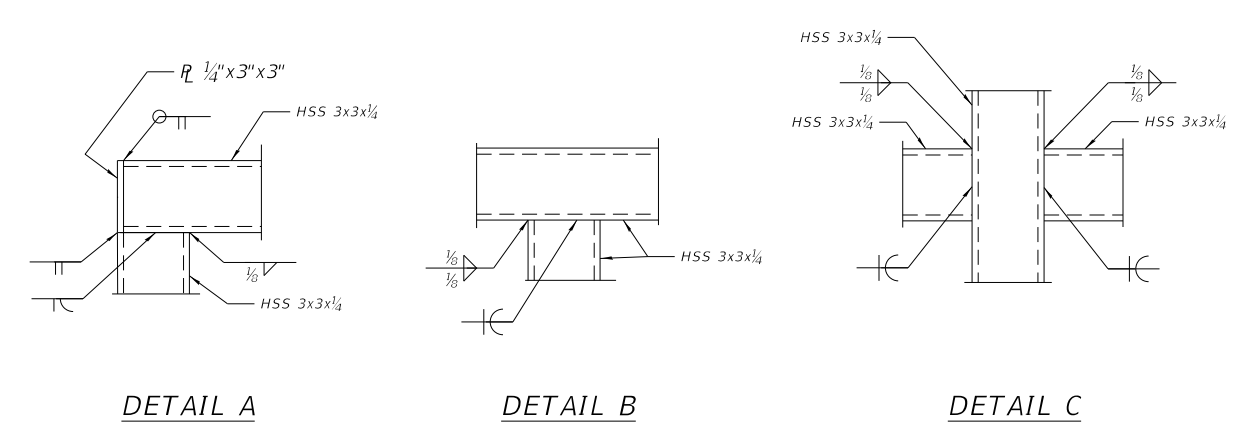
MODEL: Default
 FILE NAME: p:\v\sp\sv\306.hanson.dom\hanson_projects\documents\13\obs\13H0106\Phase-III\CAD\Struct\Sheet\0900180-XXXX-TYLI-4300-Unit5-BikeRailDet1



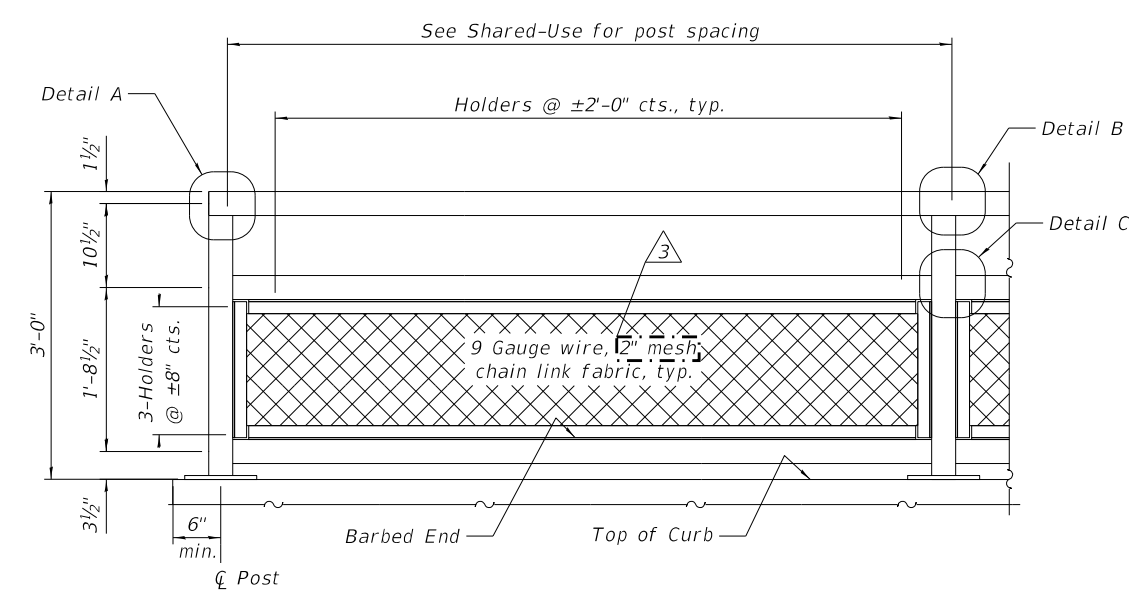
PARAPET RAILING ELEVATION
(Inside Face of Two Element Rail)



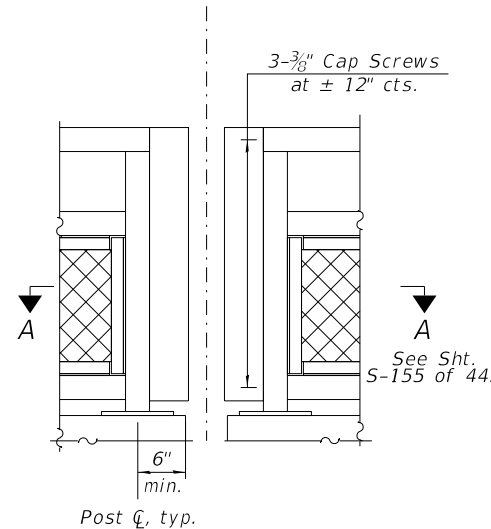
DETAIL 1
(At Expansion Joints, see Detail 3 for Pier 12)



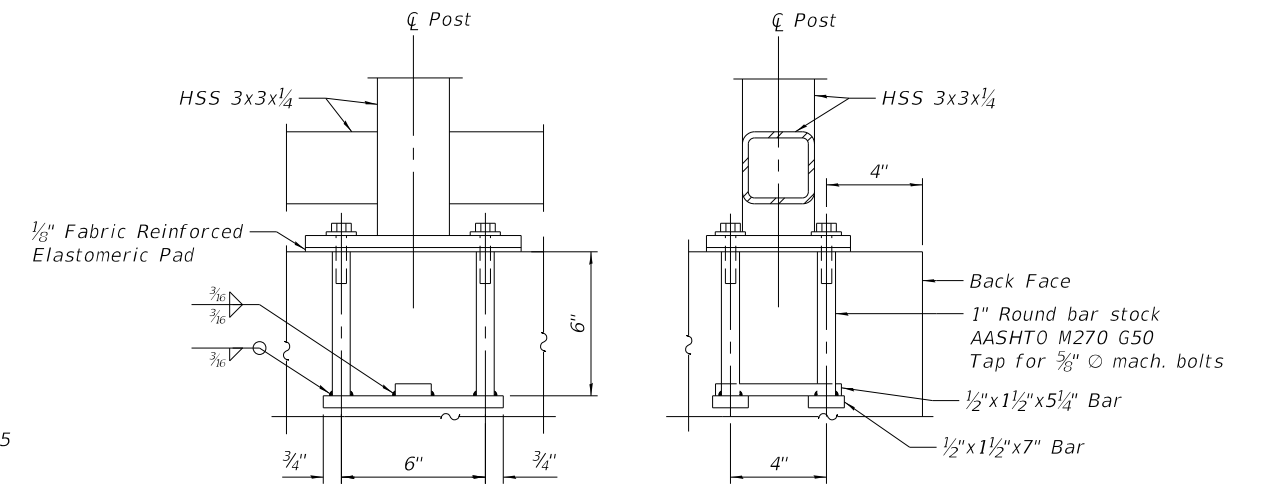
DETAIL A **DETAIL B** **DETAIL C**



TYPICAL BRIDGE FENCE RAILING (SPECIAL) ELEVATION
see Sht. S-155 of 445 for Belvedere



DETAIL 2
(At Expansion Joint)

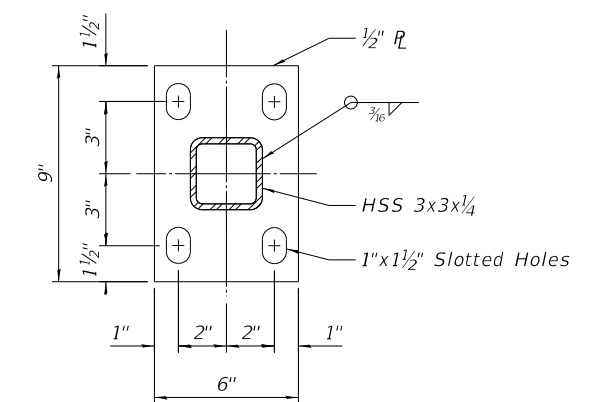


ANCHOR BOLT DETAILS
(See Note 4)

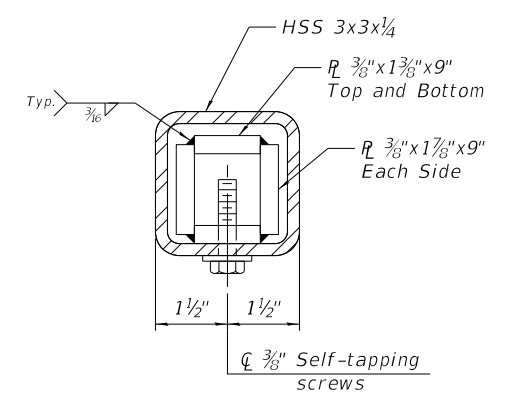
BILL OF MATERIAL

Item	Pay Unit	Quantity
Bridge Fence Railing (Special)	Foot	4,646
Parapet Railing	Foot	4,876

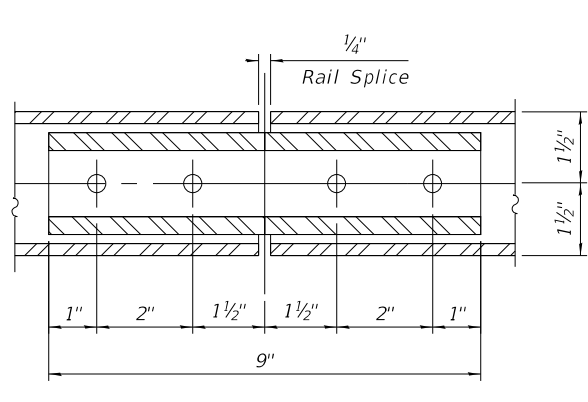
- Notes:**
- All structural steel tubing, post, and railing for parapet shall be CVN tested according to 1006.34(b) of the Standard Specifications. CVN testing may be omitted for the Bridge Fence Railing (Special).
 - All structural steel rail elements, including posts, railing, splices, anchor devices, plates, and fasteners, shall be galvanized and painted in accordance with Special Provision, "Hot Dip Galvanizing for Structural Steel". The color shall be Blue, Munsell No. 10B 3/6.
 - All chain link fence elements, including chain link fabric, ties, tensioning components, and fittings, shall be Type IV Class B (polyvinyl chloride (PVC)-coated steel) in accordance with AASHTO M 181. The color shall be Blue, Munsell No. 10B 3/6.
 - In lieu of the cast-in-place anchor device shown, the Contractor has the option of drilling and setting 3/8" anchor rods according to Article 509.06 of the Standard Specifications. Embedment shall be according to the manufacturer's specifications.



BASE PLATE



RAIL SPLICE



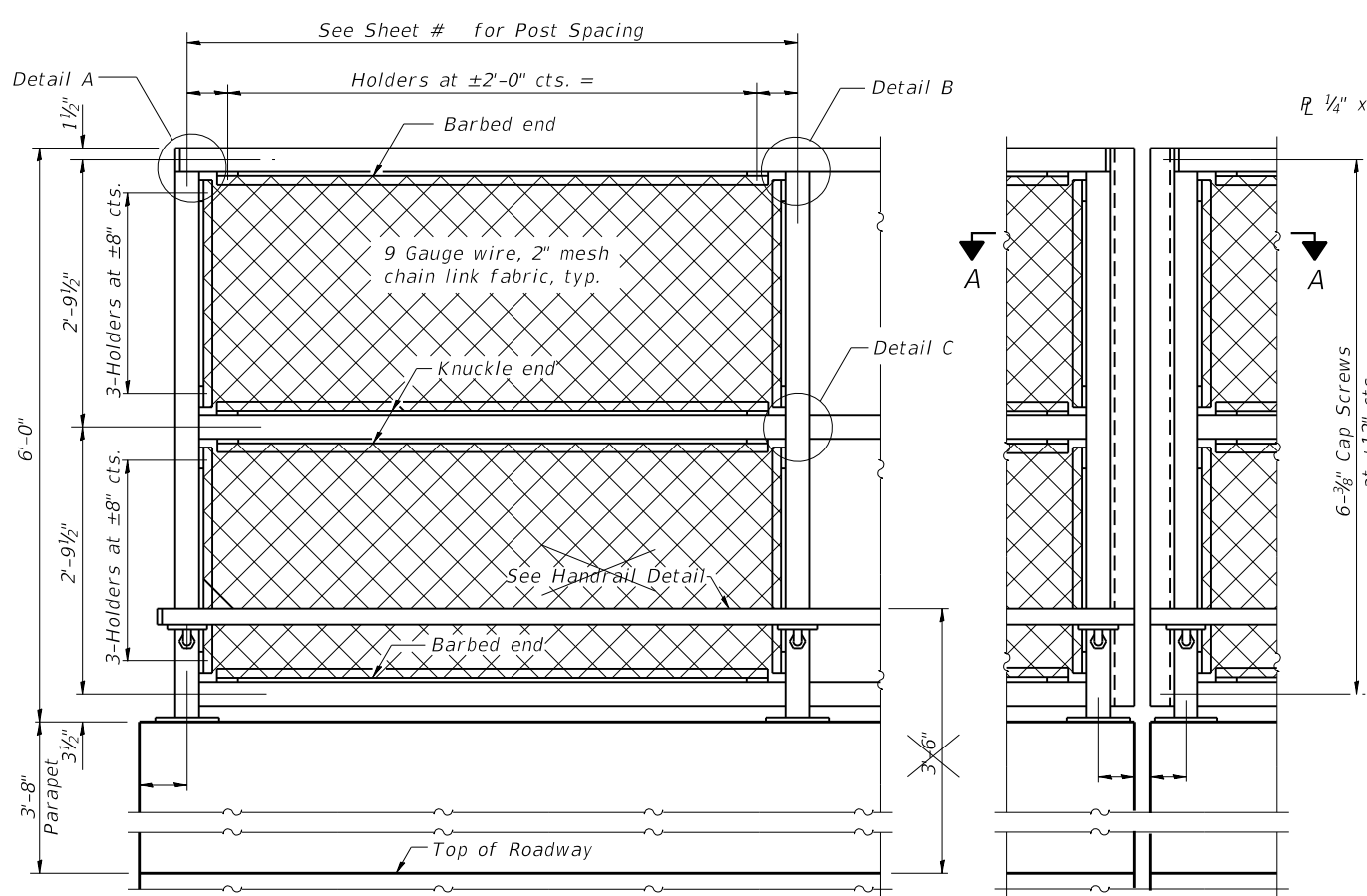
STATE OF ILLINOIS
DEPARTMENT OF TRANSPORTATION

PARAPET RAILING AND BRIDGE FENCE (SPECIAL), 1 OF 2
STRUCTURE NO. 090-0180

TYLIN INTERNATIONAL
200 S. WACKER DR.
SUITE 1400
CHICAGO, IL 60606
TEL: 312-777-2900

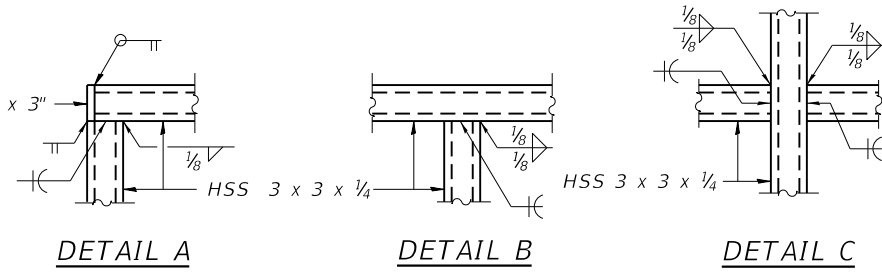
USER NAME = spantazis	DESIGNED - ER	REVISED - 4/22/2019 S.P.
PLOT SCALE = 0:2.0000 " = 1" / in.	CHECKED - MM	REVISED -
PLOT DATE = 4/19/2019	DRAWN - JR	REVISED -
	CHECKED - NS	REVISED -

F.A.P. RTE.	SECTION	COUNTY	TOTAL SHEETS	SHEET NO.
317	(15B;(102-1),(14HB)BR)BR	PEO/TAZ	1361	1058
CONTRACT NO. 68B46				
ILLINOIS FED. AID PROJECT NHPP-YRP3(905)				



ELEVATION
(Inside Face)

ELEVATION
(At Expansion Joint)

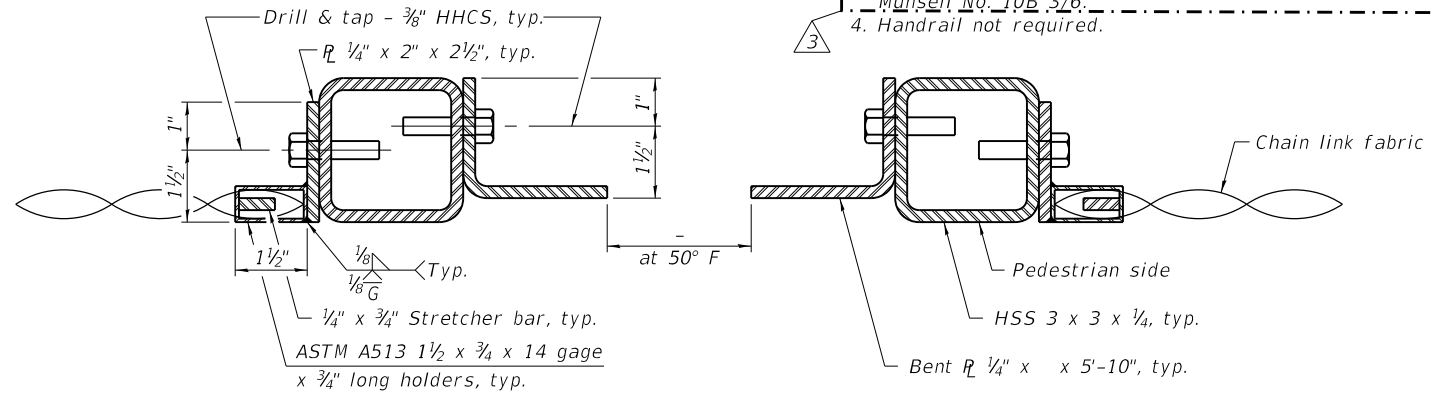


DETAIL A

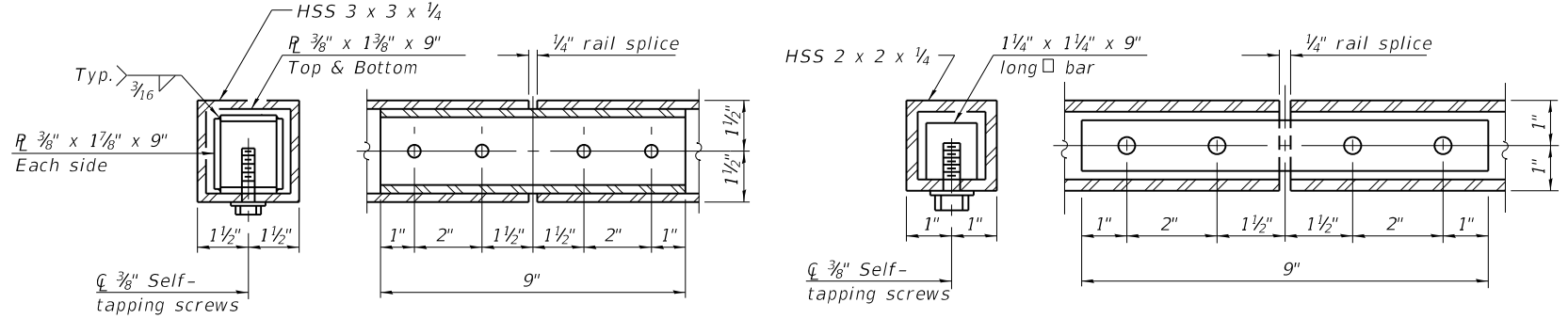
DETAIL B

DETAIL C

- Notes:**
- All structural steel tubing, post, and railing for bridge fence rail shall be CVN tested according to 1006.34(b) of the Standard Specifications.
 - All structural steel rail elements, including posts, railing, splices, anchor devices, plates, and fasteners, shall be galvanized and painted in accordance with Special Provision, "Hot Dip Galvanizing for Structural Steel". The color shall be Blue, Munsell No. 10B 3/6.
 - All chain link fence elements, including chain link fabric, ties, tensioning components, and fittings, shall be Type IV Class B (polyvinyl chloride (PVC)-coated steel) in accordance with AASHTO M 181. The color shall be Blue, Munsell No. 10B 3/6.
 - Handrail not required.

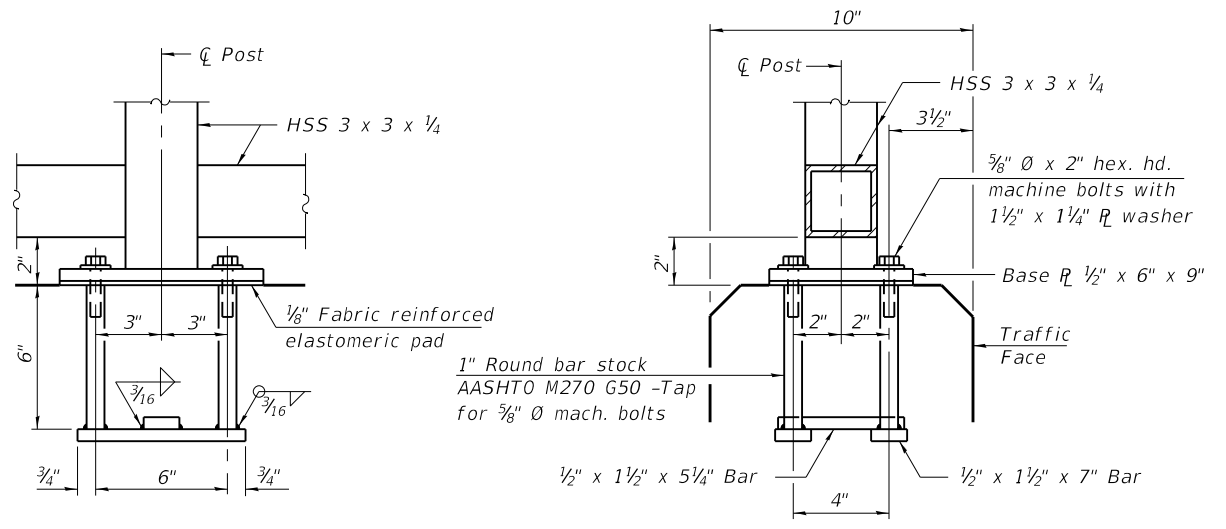


SECTION A-A



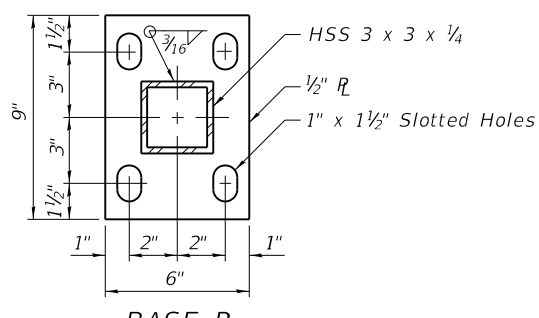
RAIL SPLICE

HANDRAIL SPLICE

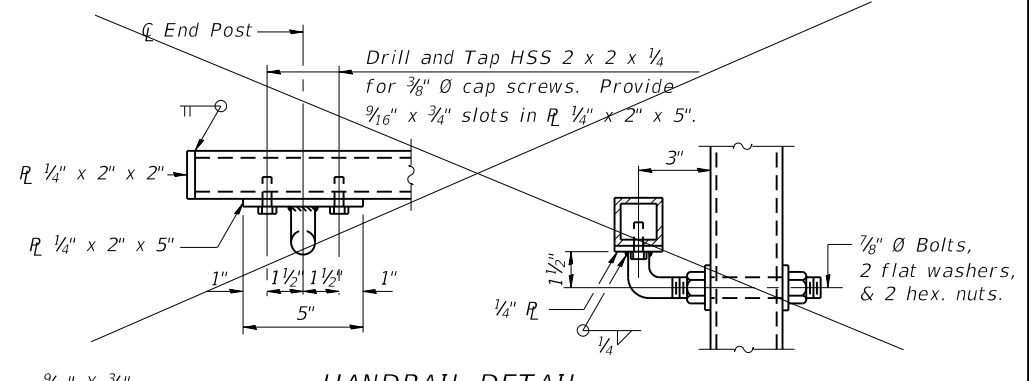


ANCHOR BOLT DETAILS

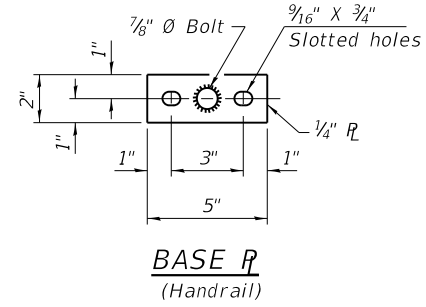
In lieu of the cast-in-place anchor device shown, the Contractor has the option of drilling and setting 5/8" anchor rods according to Article 509.06 of the Standard Specifications. Embedment shall be according to the manufacturer's specifications.



BASE R



HANDRAIL DETAIL



BASE R
(Handrail)

BILL OF MATERIAL

Item	Unit	Quantity
Bridge Fence Railing	Foot	266

MODEL: Default
FILE NAME: p:\1\sp\sv\306\hanson Projects\Documents\13\103113\106\Phase-III\CAD\Struct\Sheet\0900180-XXXX-TYLI-4350-Bridge Fence Railing Lt. Edge.dgn
4/19/2019 3:57:46 PM

R-28
8-11-2017
TYLIN INTERNATIONAL
200 S. WACKER DR.
SUITE 1400
CHICAGO, IL 60606
TEL: 312-777-2900

USER NAME	DESIGNED	REVISION
spantazis	SP	4/22/2019 S.P.
	CHECKED	REVISION
	DRAWN	REVISION
	CHECKED	REVISION

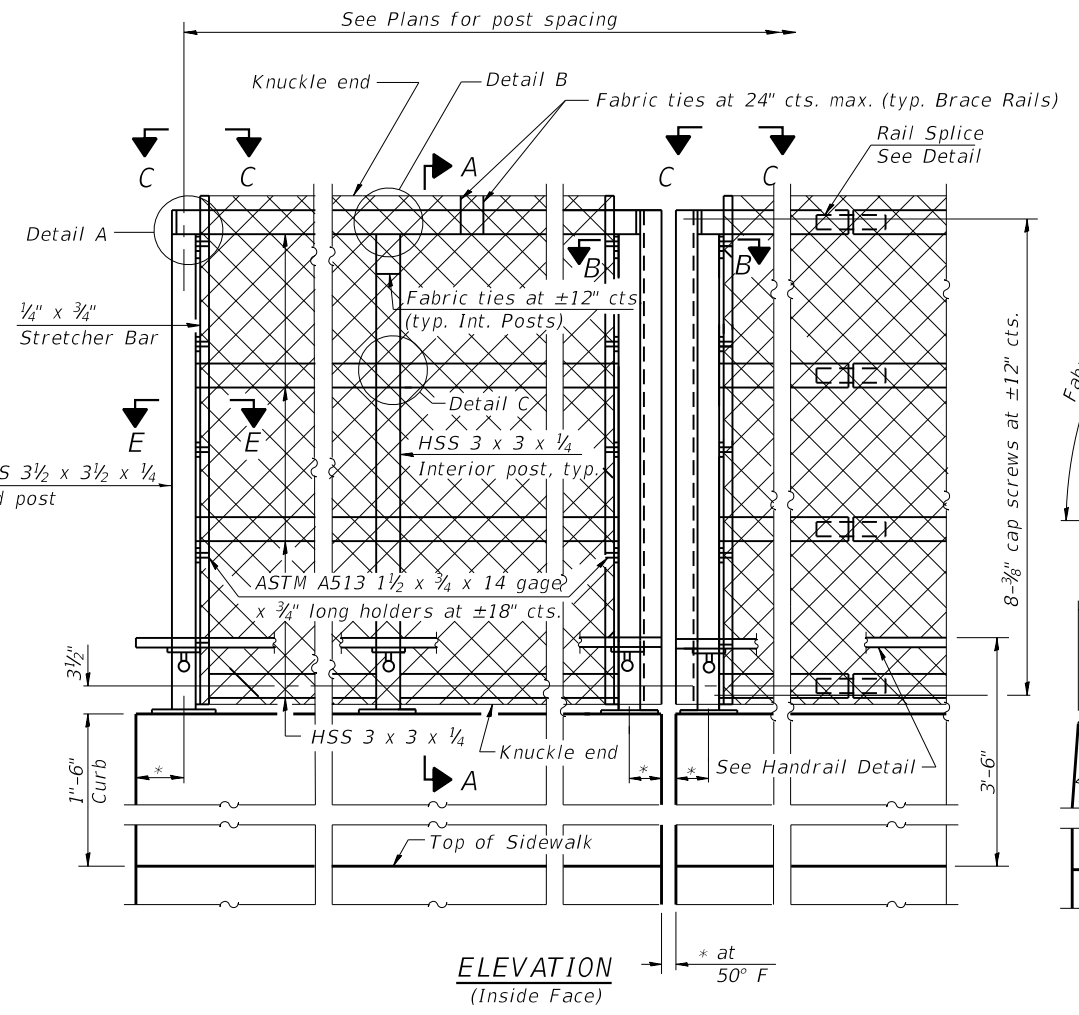
STATE OF ILLINOIS
DEPARTMENT OF TRANSPORTATION

BRIDGE FENCE RAILING, PARAPET MOUNTED - LT. BARRIER
STRUCTURE NO. 090-0180

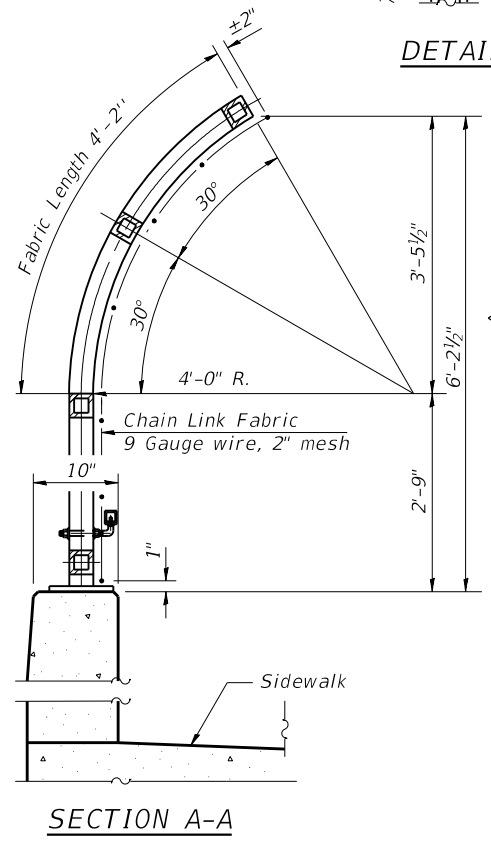
SHEET 155A OF 445 SHEETS

F.A.P. RTE.	SECTION	COUNTY	TOTAL SHEETS	SHEET NO.
317	(15B;(102-1),(14HB)BR)BR	PEOTAZ	1361	1060
ILLINOIS			CONTRACT NO. 68B46	
FED. AID PROJECT			NHPP-YRP3(905)	

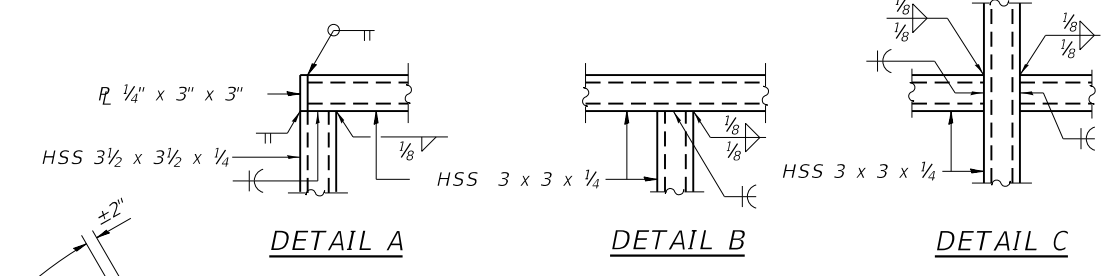
MODEL: Default
 FILE NAME: pw:\15psl-sv\306.hanson.dom\hanson_projects\Documents\13\106\Phase-III\CAD\Struct\Sheet\0900180-XXXXX-TYLL-4351-Bridge Fence Railing Rt. Edge.dgn
 4/19/2019 3:58:40 PM



ELEVATION (Inside Face) * at 50° F

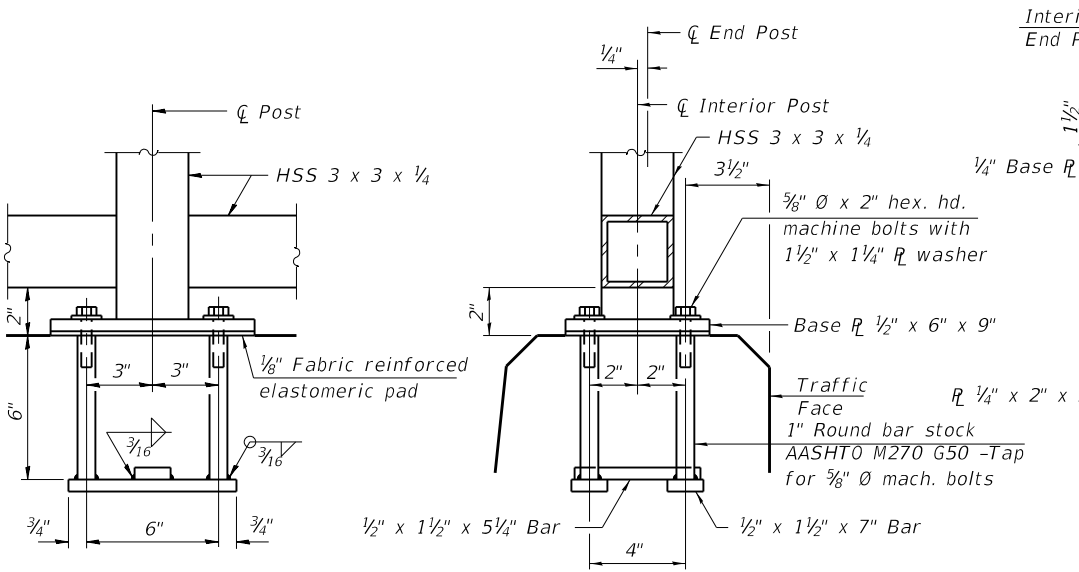
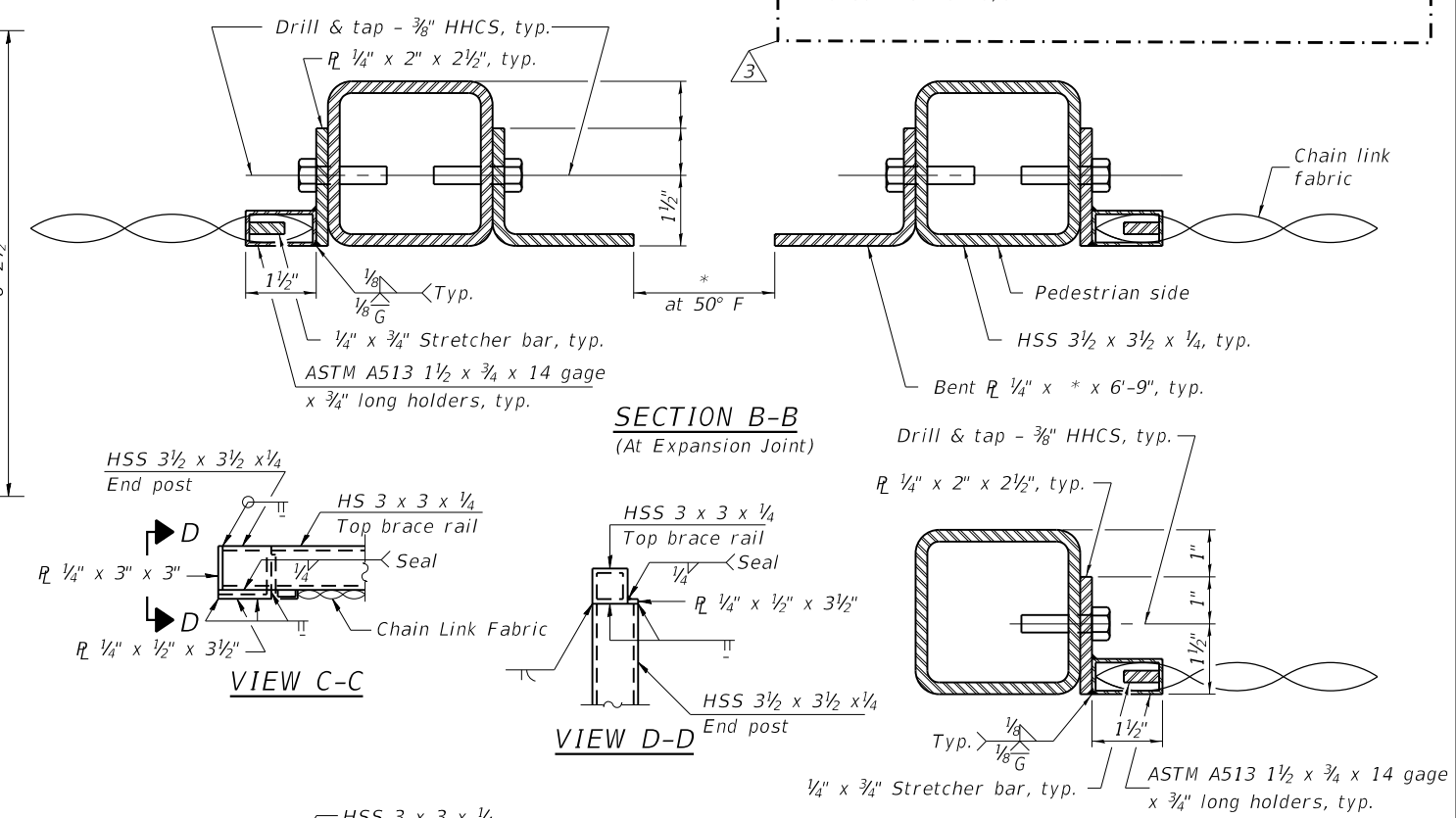


SECTION A-A



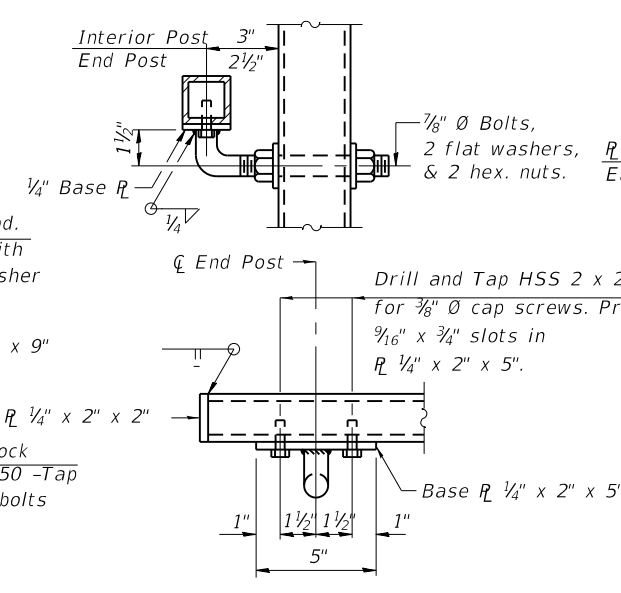
DETAIL A, DETAIL B, DETAIL C

Notes:
 1. All structural steel rail elements, including posts, railing, splices, anchor devices, plates, and fasteners, shall be galvanized and painted in accordance with Special Provision, "Hot Dip Galvanizing for Structural Steel". The color shall be Blue, Munsell No. 10B 3/6.
 2. All chain link fence elements, including chain link fabric, ties, tensioning components, and fittings, shall be Type IV Class B (polyvinyl chloride (PVC)-coated steel) in accordance with AASHTO M 181. The color shall be Blue, Munsell No. 10B 3/6.

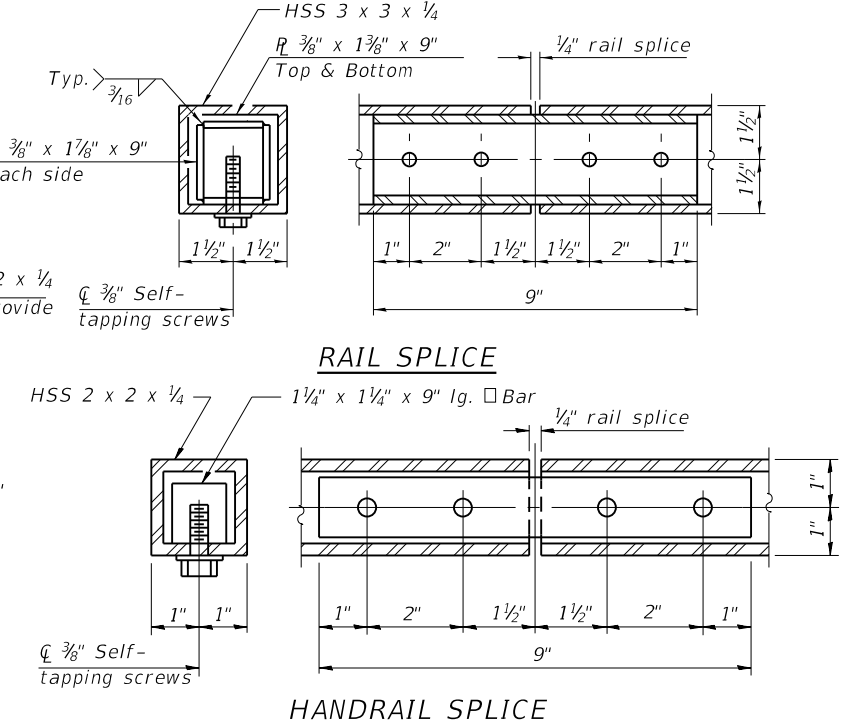


ANCHOR BOLT DETAILS

In lieu of the cast-in-place anchor device shown, the Contractor has the option of drilling and setting 5/8" Ø anchor rods according to Article 509.06 of the Standard Specifications. Embedment shall be according to the manufacturer's specifications.

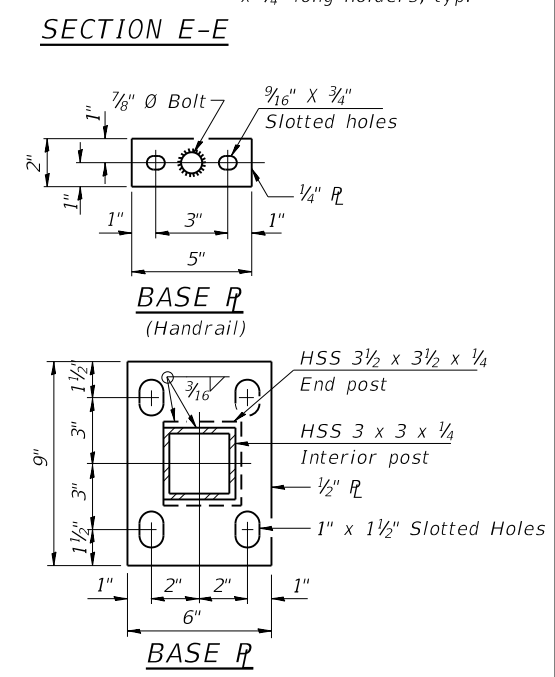


HANDRAIL DETAIL



RAIL SPLICE

HANDRAIL SPLICE



BASE R (Handrail)

BASE R

BILL OF MATERIAL

Item	Unit	Quantity
Bridge Fence Railing	Foot	240

R-32 8-11-2017 *Variable - See Plans

TYLIN INTERNATIONAL
 200 S. WACKER DR.
 SUITE 1400
 CHICAGO, IL 60606
 TEL: 312-777-2900

USER NAME = spantazis	DESIGNED - SP	REVISED - 4/22/2019 S.P.
PLOT SCALE = 0:2.0000' = 1/8" / in.	CHECKED -	REVISED -
PLOT DATE = 4/19/2019	DRAWN -	REVISED -
	CHECKED -	REVISED -

STATE OF ILLINOIS
 DEPARTMENT OF TRANSPORTATION

BRIDGE FENCE RAILING, PARAPET RAILING - RT. CURB
 STRUCTURE NO. 090-0180

SHEET 155B OF 445 SHEETS

F.A.P. RTE.	SECTION	COUNTY	TOTAL SHEETS	SHEET NO.
317	(15B;(102-1);(14HB)JR)BR	PEO/TAZ	1361	1061
CONTRACT NO. 68B46				
ILLINOIS FED. AID PROJECT NHPP-YR3(905)				