

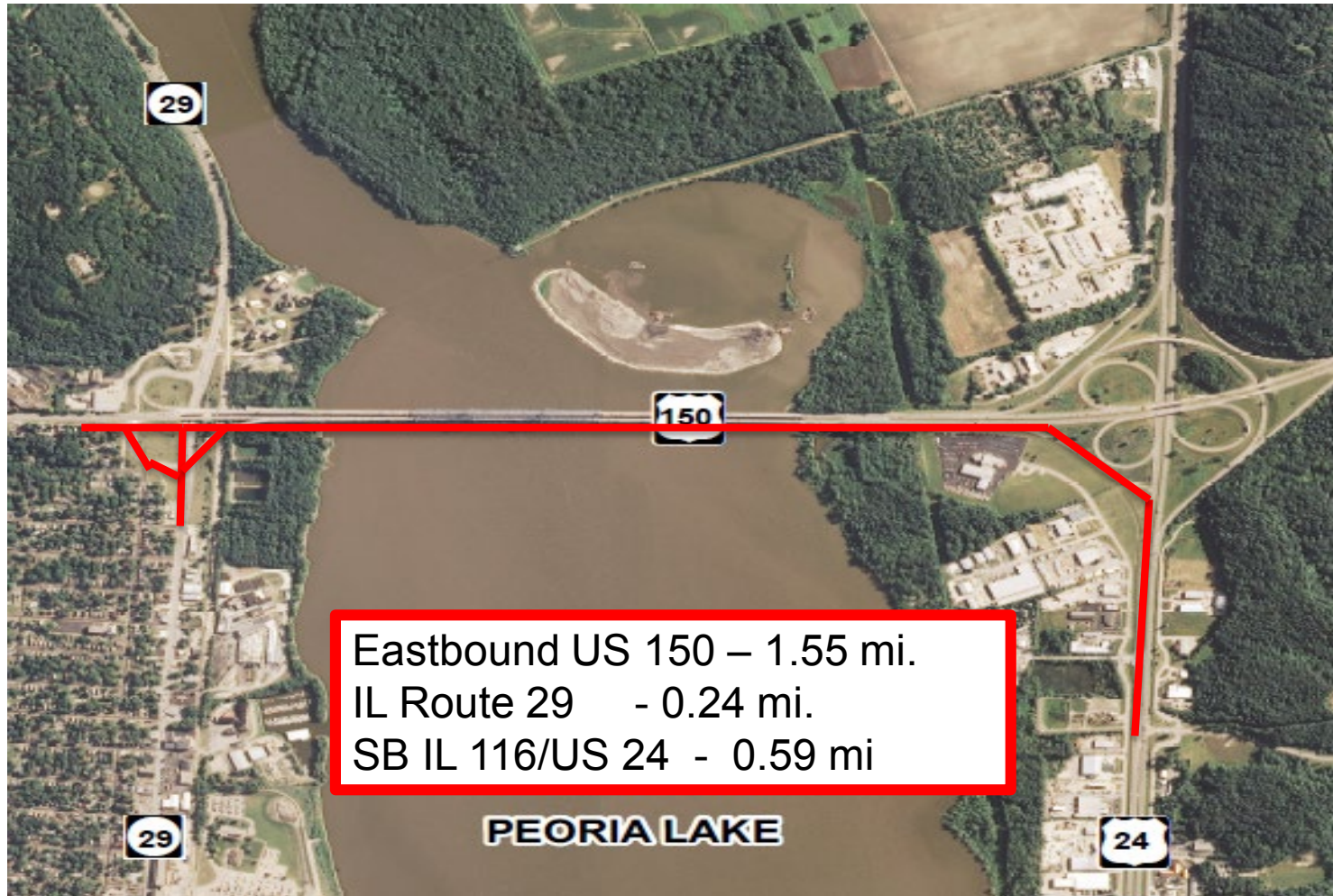
US 150 Eastbound (McClugage Bridge) over the Illinois River PRE-BID MEETING



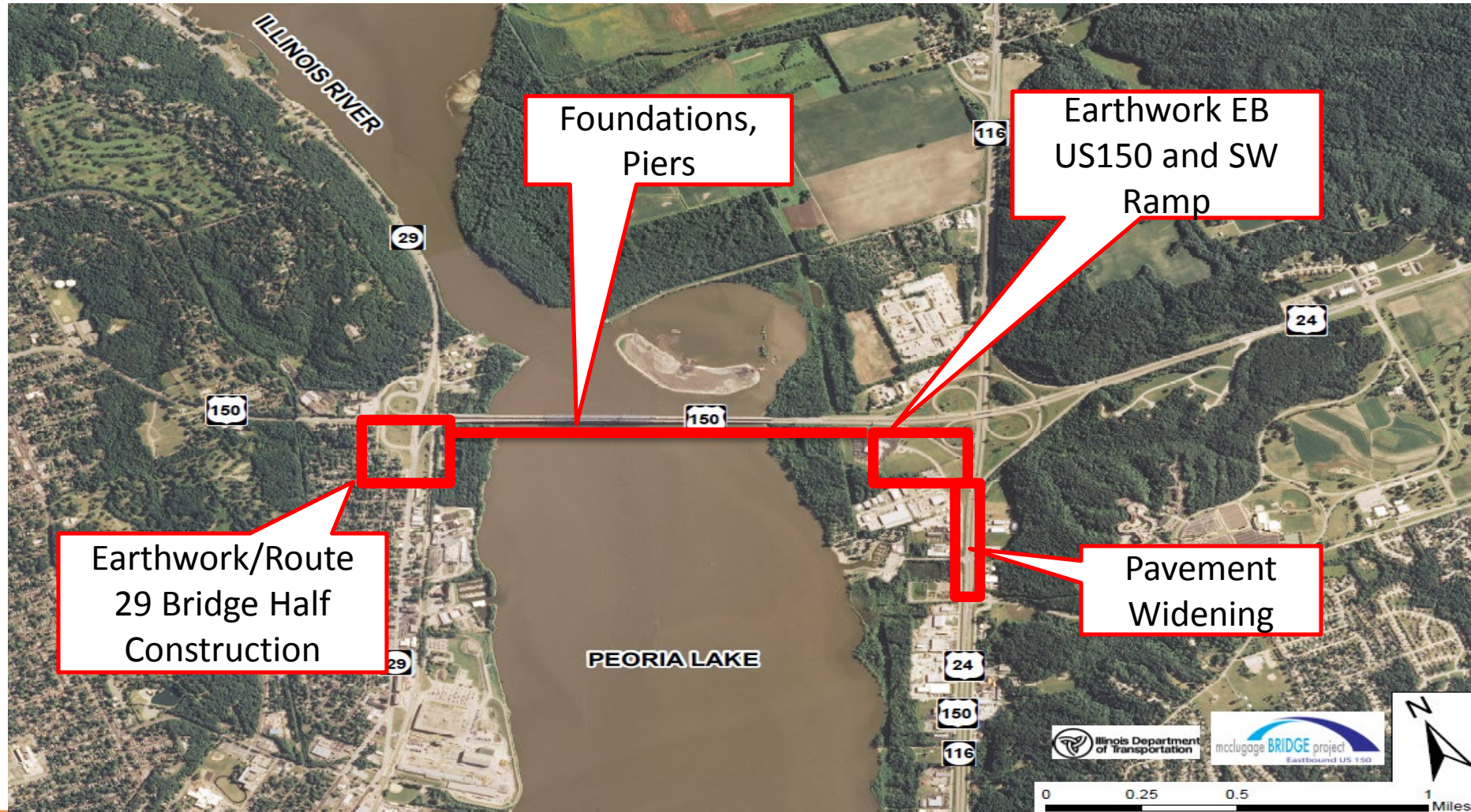
Meeting Agenda

- Introduction
- US 150 Corridor
- Construction Sequence
- Permits
- Commitments
- Environmental Key Elements
- Additional Key Elements
- Questions/Discussion

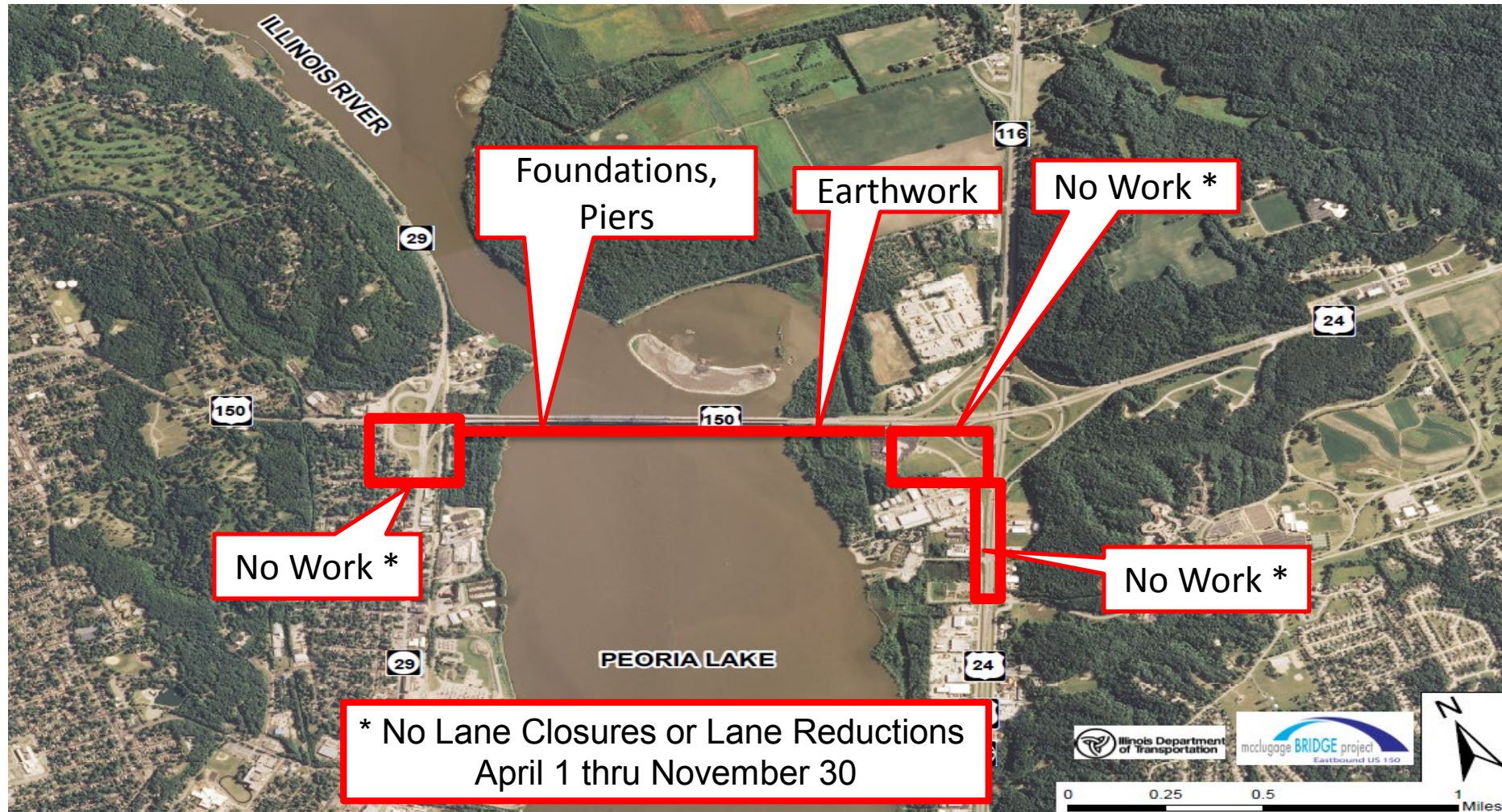
Project Aerial Photo



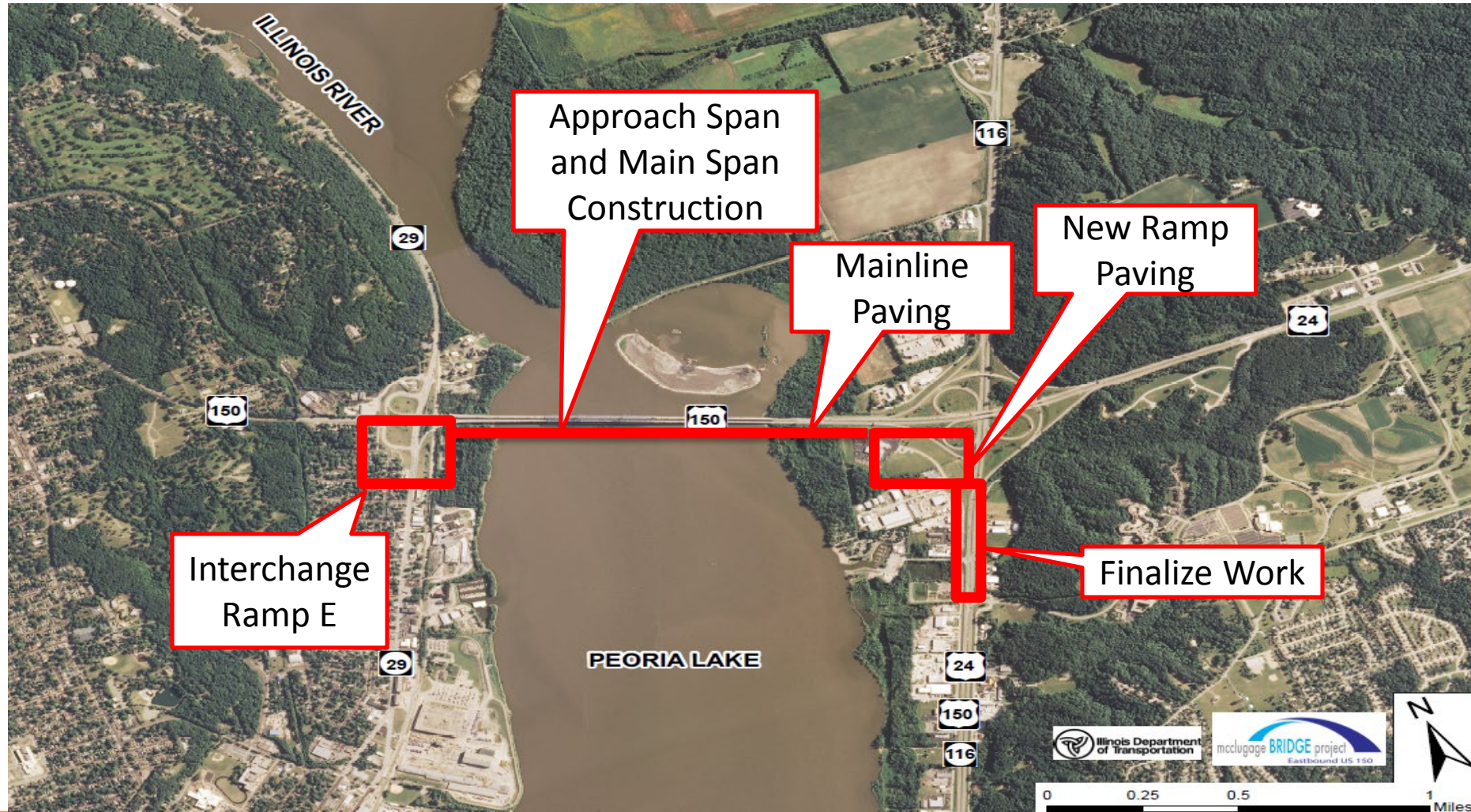
Construction Sequence – July 2019 thru March 2020



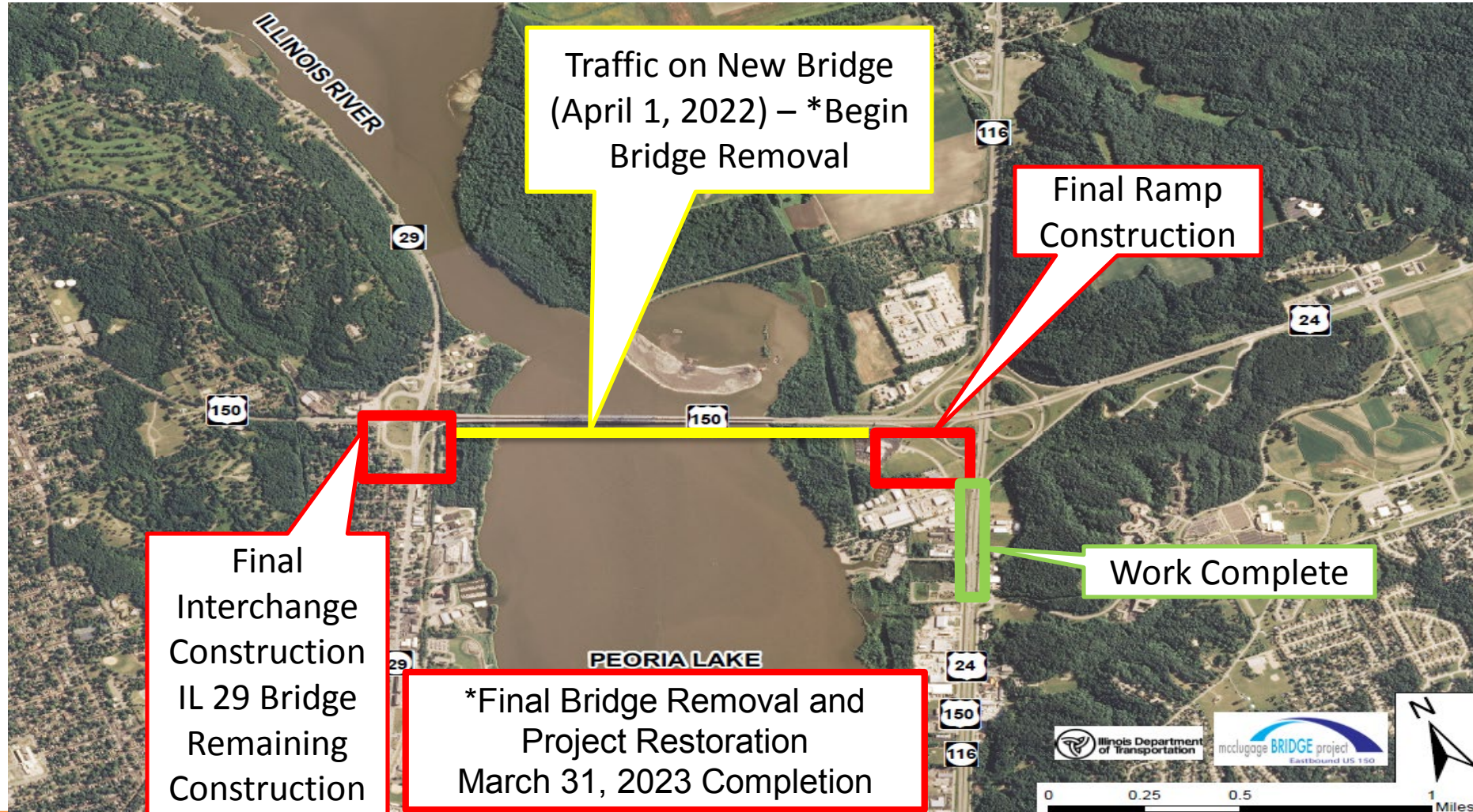
Construction Sequence – April 2020 thru March 2021



Construction Sequence – April 2021 thru March 2022



Construction Sequence – April 2022 thru March 2023



Construction Key Items

- Summer 2019 Start
- Approximate 3-3/4 year schedule
- Completion Date – March 31, 2023
- No lane closures or lane reductions in 2020
- Cooperation with other contracts

Permits

- IDNR Permit
- IL EPA 401 Water Quality Permit
- ACOE 404/Section 10 and 408 Permit
- US Coast Guard Section 9 Permit
- RELATED ITEMS
 - Removal and Disposal of Regulated Substances
 - River Sediment Management
 - Wetlands

Permits

- IDNR Permit
 - Approved based on determination that the project will neither restrict the river's flood carrying capacity nor adversely impact the public's interests in the public body of water.
 - One special condition: bridge removal shall be conducted such that it will not unnecessarily interfere with navigation or create a hazard to boating safety.

Permits

- IL EPA 401 Water Quality Certification Condition
 - Maintain water quality standards, prevent water pollution, prevent excavated or dredged material from returning back to the waterway or beneath normal flooding levels, implement BMPs and erosion control measures both on land and in the river such as using floating silt curtains.

Permits

- ACOE 404/Section 10 and 408 Permit Conditions
 - Consultation with IDNR on potential impacts to listed species and aquatic habitat once the method of bridge demolition is selected
 - Notify the Corps Illinois Waterway Project Office 72 hours prior to the commencement of work
 - Procedures to follow for unanticipated discoveries of historic, archaeological, or human remains during construction.

Permits

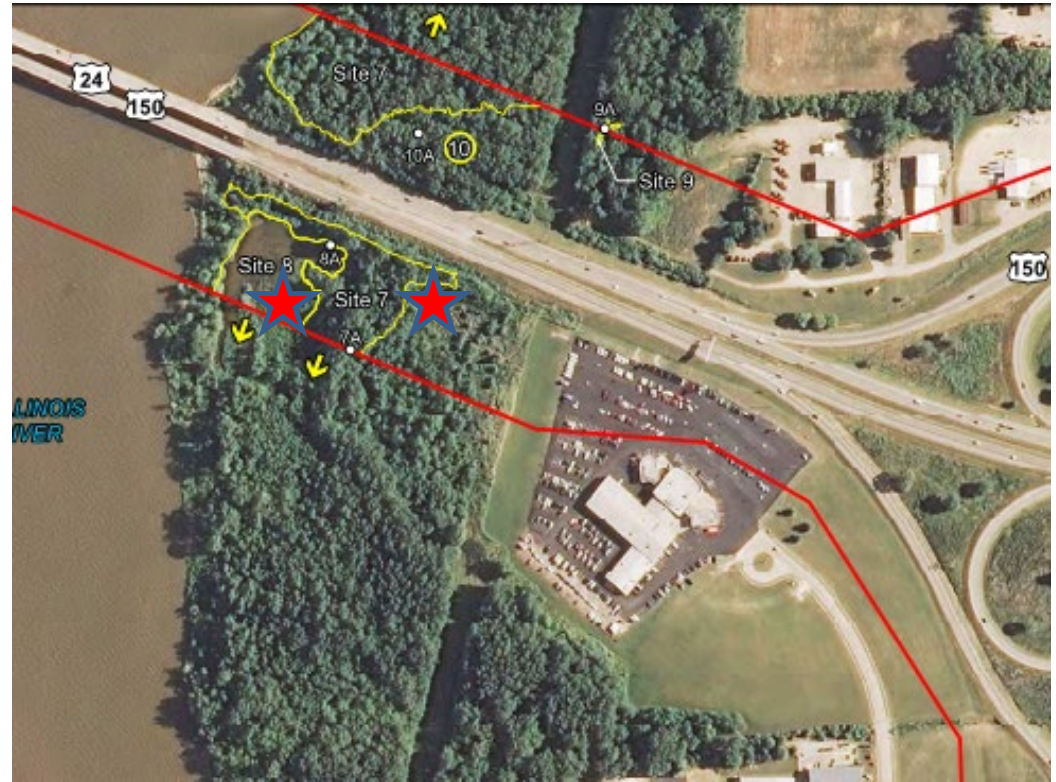
- US Coast Guard Section 9 Permit
 - No falsework will be used in the navigation channel and no more than 48 hours will be allowed for navigational channel closures;
 - In order to facilitate times needed for a temporary navigation construction clearance of 315 feet, a tug with a minimum 1200 horsepower will be provided to assist vessels through the bridge on demand.
 - The existing piers will be removed to at least two feet below existing ground, with the exception of the piers adjacent to the nav channel, which will be removed to 12 feet below normal pool elevation.
 - Any material accidentally falling into the river will be removed and disposed out of the waterway.

Related Items

- **Removal and Disposal of Regulated Substances**
 - Areas listed in the plans and specifications shall be managed as specified.
- **River Sediment Management**
 - Because the depth of the Illinois River is shallow, a temporary causeway and/or dredging of the river sediment, or other access measures, may be required to allow access to construct the bridge. The means and methods are up to the contractor, but a dredging and causeway construction has been estimated for the permit applications.
 - If dredging is proposed, the method is assumed to be by mechanical removal. Placement locations are assumed to be either certified disposal locations, as specified in the specifications, or possible upland beneficial re-use areas, which would need to be approved by the Department and Illinois EPA.

Related Items

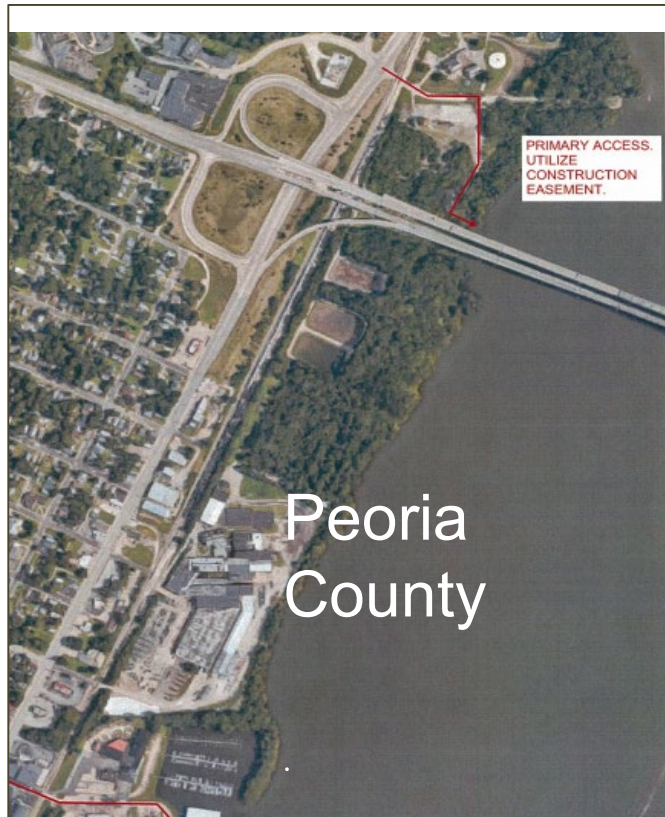
Wetlands



★ Sites 7, 8 and 11 have been delineated

Commitments

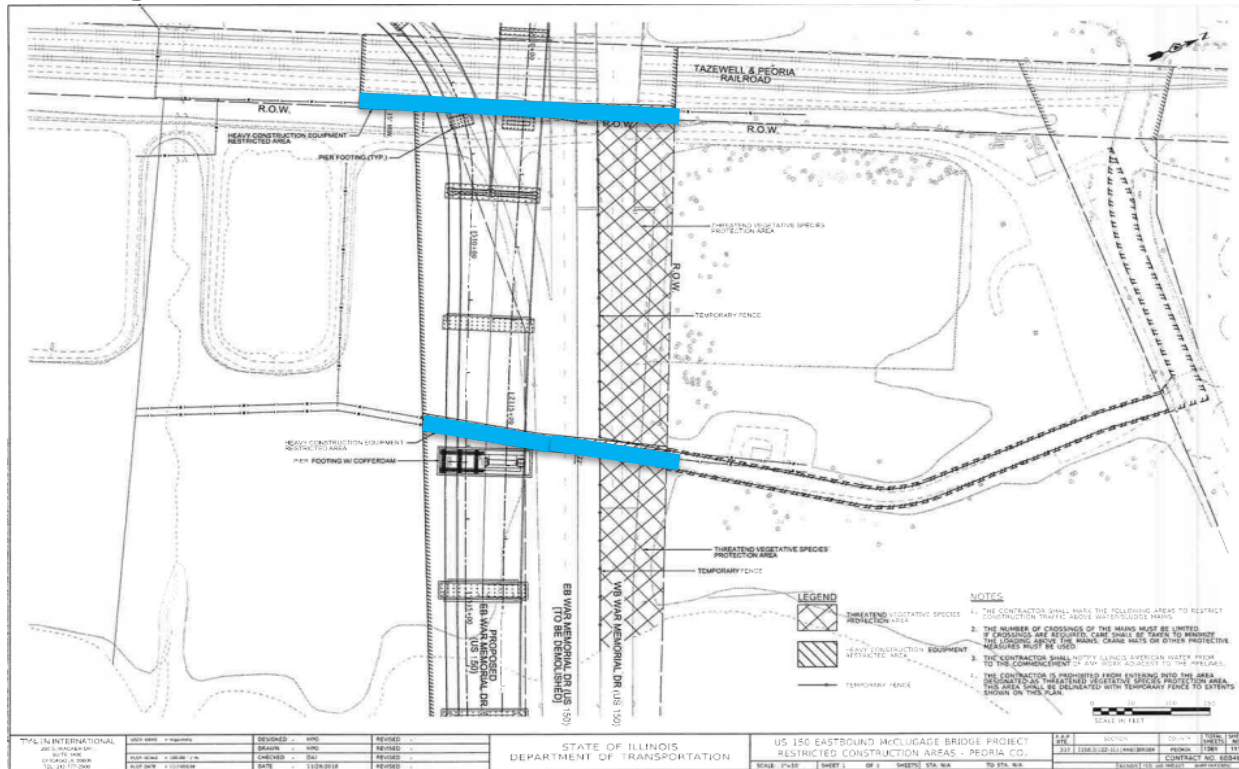
- Tri County Search and Rescue – River Access



Commitments

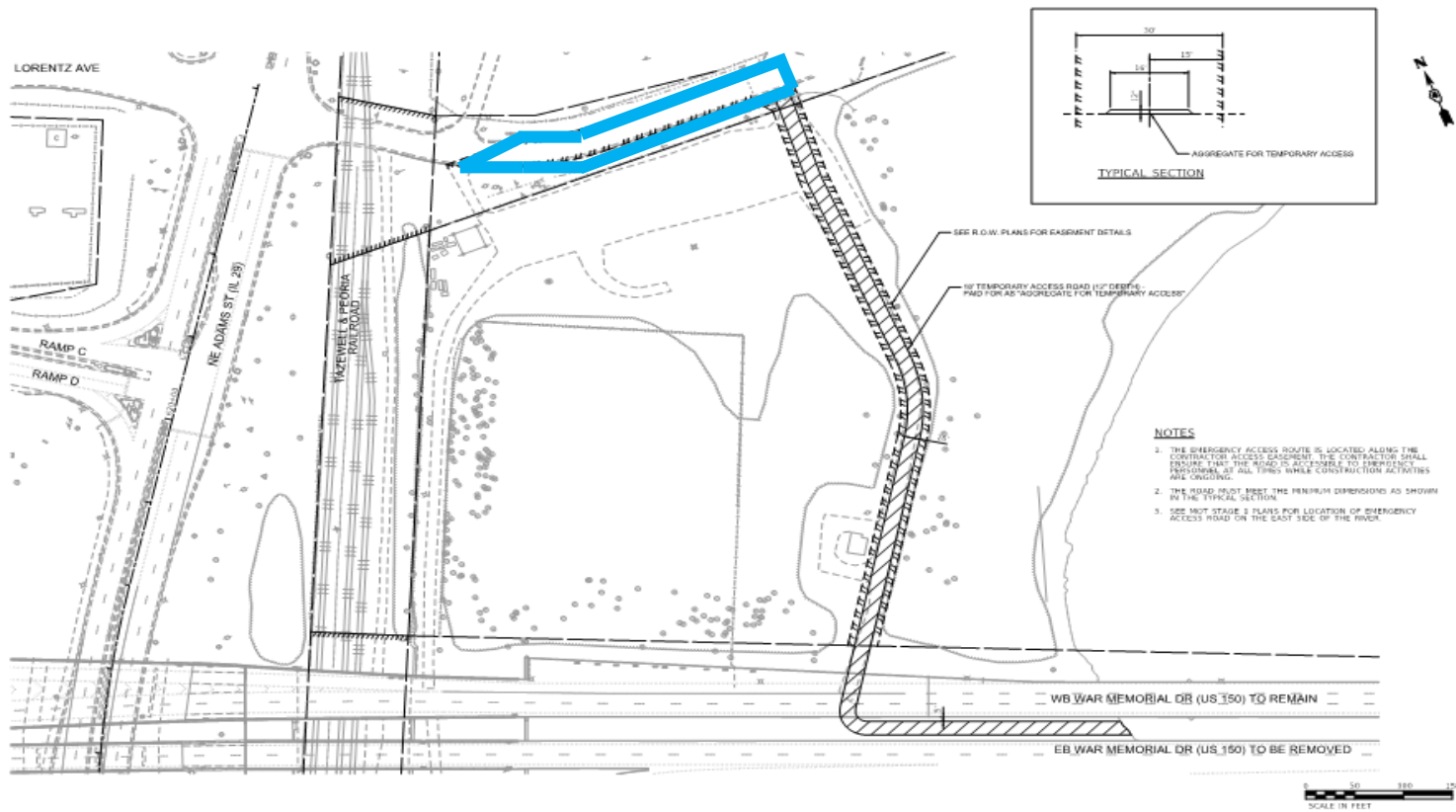
Illinois American Water Co.

– Sludge and Potable Water Pipelines



Commitments

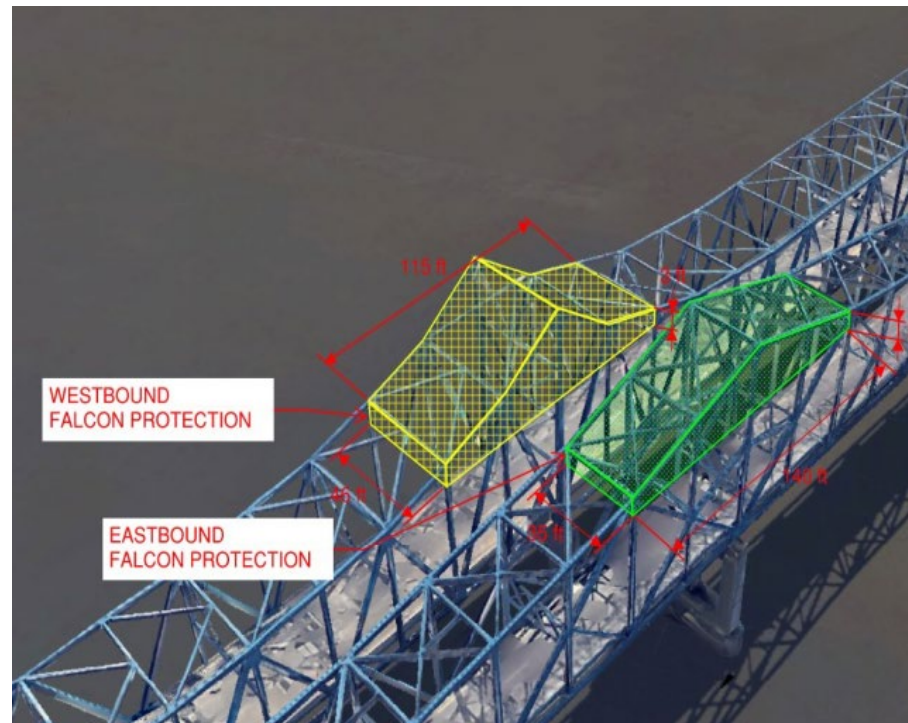
Lorentz Avenue Pleasure Parkway



TPVLL INTERNATIONAL 200 S. ANCKER DR. SUITE 1400 CHICAGO, IL 60606 TEL: 312.772.2888	DESIGNED	PPS	REVISED		STATE OF ILLINOIS DEPARTMENT OF TRANSPORTATION	US 150 EASTBOUND McCLUGAGE BRIDGE PROJECT EMERGENCY RIVER ACCESS - PEORIA CO.		P.F.P.	SUBCON	CONTRACT NO.	TOTAL SHEETS
	PREPARED BY: MPP/JL CHECKED BY: JLN DATE: 11/30/2018	DESIGNED BY: MPP CHECKED BY: JLN DATE: 11/30/2018	REVISED BY: JLN DATE: 11/30/2018				SCALE: 1"=50'	SHEET 1	OF 1	SHEET 274.5A	TO 274.5A

Environmental Key Elements

- Falcon Protective Netting



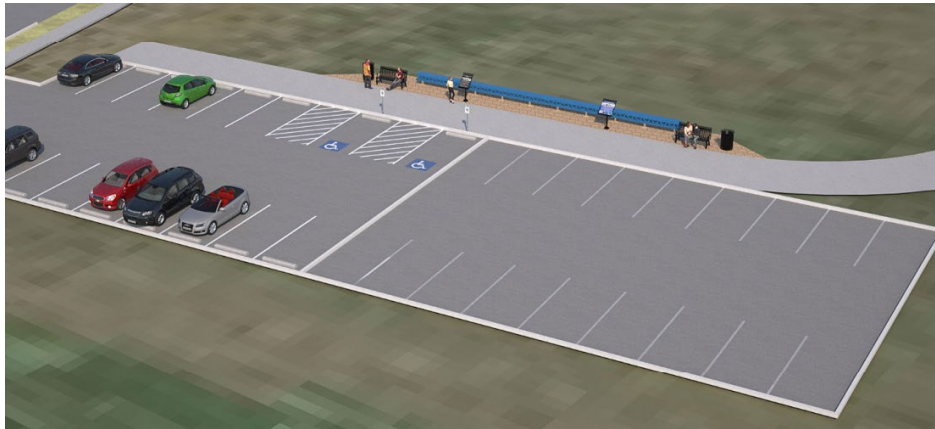
Additional Key Elements

- Contractor Staging Area



Additional Key Elements

Parking Lots and Parks



Tazewell County

Peoria County



Thank You

Questions/Discussion