

STATE OF ILLINOIS
DEPARTMENT OF TRANSPORTATION

* 19 + 1 = 20 TOTAL SHEETS

F.A.P. ROUTE	SECTION	COUNTY	TOTAL SHEETS	SHEET NO.
348	2018 093-B-R	COOK	19	1
			CONTRACT NO. 62H23	

FOR INDEX OF SHEETS, SEE SHEET NO. 2

THIS IMPROVEMENT IS LOCATED IN THE VILLAGE OF WORTH AND CITY OF PALOS HEIGHTS

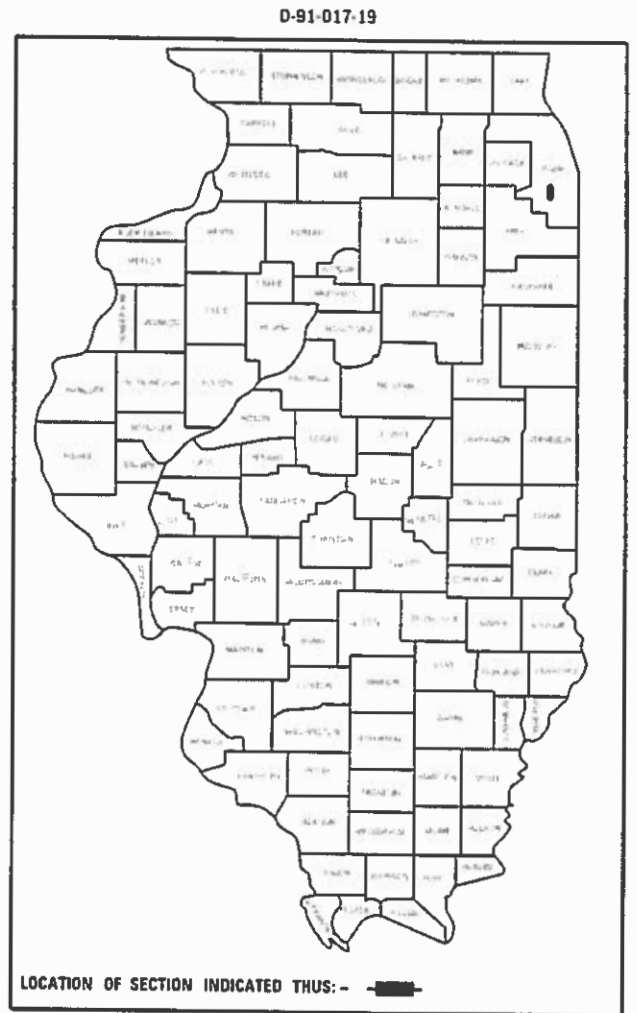
PROPOSED HIGHWAY PLANS

F.A.P. ROUTE 348: IL-43 (HARLEM AVE.)
OVER CAL SAG CHANNEL
SECTION: 2018-093-B-R
PROJECT: NHPP-66YU(353)
BRIDGE REPAIR
COOK COUNTY

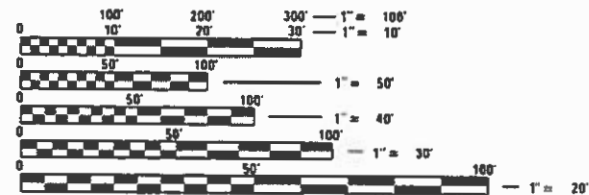
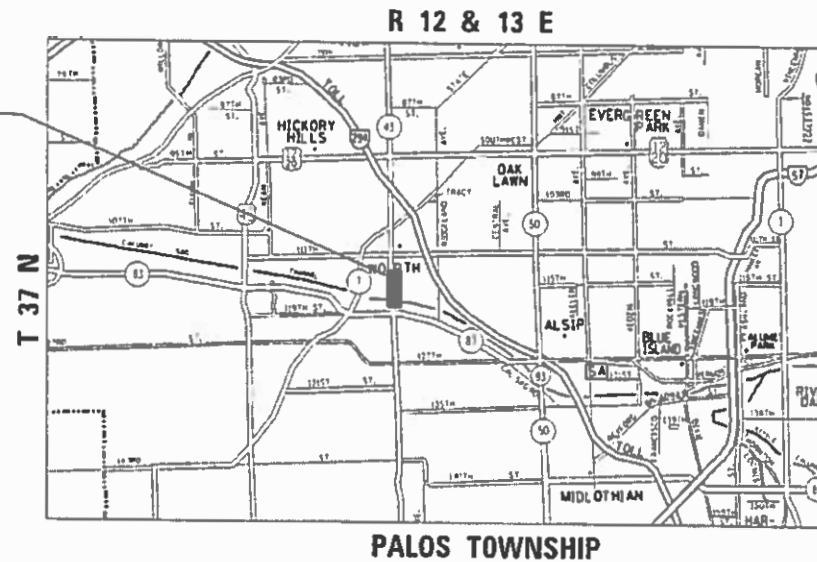
C-91-216-19

TRAFFIC DATA

ADT (2017) = 36,800
POSTED SPEED LIMIT = 35 MPH



LOCATION OF IMPROVEMENT
IL-43 (HARLEM AVE.) OVER
CAL SAG CHANNEL
SN: 016-0323



FULL SIZE PLANS HAVE BEEN PREPARED USING STANDARD ENGINEERING SCALES. REDUCED SIZED PLANS WILL NOT CONFORM TO STANDARD SCALES. IN MAKING MEASUREMENTS ON REDUCED PLANS, THE ABOVE SCALES MAY BE USED.

J.U.L.I.E.
JOINT UTILITY LOCATION INFORMATION FOR EXCAVATION
1-800-892-0123
OR 811

PROJECT ENGINEER: J. ALAIN MIDY (847) 221-3056
PROJECT MANAGER: FAWAD AQUEEL (847) 705-4247

CONTRACT NO. 62H23

STATE OF ILLINOIS
DEPARTMENT OF TRANSPORTATION

SUBMITTED January 28, 2019

Anthony A. Quigley REGIONAL ENGINEER

March 22, 2019 EA, ETC

ENGINEER OF DESIGN AND ENVIRONMENT

March 23, 2019

DIRECTOR OF HIGHWAYS PROJECT IMPLEMENTATION

PRINTED BY THE AUTHORITY OF THE STATE OF ILLINOIS

INDEX OF SHEETS

SHEET NO.	DESCRIPTION
1	COVER SHEET
2	INDEX OF SHEETS, STANDARDS, AND GENERAL NOTES
3	SUMMARY OF QUANTITIES
4-13	STRUCTURE REPAIR SHEETS
14-16	TRAFFIC CONTROL SHEETS
17	PROPOSED PAVEMENT MARKING
17A	TRAFFIC CONTROL AND PROTECTION FOR SIDE RAODS, INTERSECTIONS, AND DRIVEWAYS (TC-10)
18	DISTRICT ONE TYPICAL PAVEMENT MARKINGS (TC-13)
19	ARTERIAL ROAD INFORAMTION SIGN (TC-22)

STANDARD NO.	DESCRIPTION
701101-05	OFF ROAD OPERATION-MULTILANE MORE THAN 15' TO 24" FROM PAVEMENT EDGE
701106-02	OFF ROAD OPERATION-MULTILANE MORE THAN 15 AWAY
701427-05	LANE CLOSURE, MULTILANE, INTERMITTENT OR MOVING OPERATION FOR SPEEDS ≤ 40 MPH
701601-09	URBAN LANE CLOSURE, MULTILANE, 1W OR 2W WITH NONTRAVERSABLE MEDIAN
701701-10	URBAN LANE CLOSURE, MULTILANE INTERSECTION
701801-06	SIDEWALK, CORNER OR CROSSWALK CLOSURE
701901-08	TRAFFIC CONTROL DEVICES

GENERAL NOTES

BEFORE STARTING ANY EXCAVATION, THE CONTRACTOR SHALL CALL "JULIE" AT 800-892-0123 OR 811 FOR FIELD LOCATIONS OF BURIED ELECTRIC, TELEPHONE AND GAS FACILITIES. (48 HOUR NOTIFICATION IS REQUIRED).

THE CONTRACTOR SHALL COORDINATE CONSTRUCTION ACTIVITIES WITH UTILITY COMPANIES.

THE CONTRACTOR WILL NOT BE ALLOWED TO SET UP A YARD OR FIELD OFFICE ON STATE PROPERTY WITHOUT WRITTEN PERMISSION FROM THE DEPARTMENT.

IT SHALL BE THE CONTRACTOR'S RESPONSIBILITY TO VERIFY ALL DIMENSIONS AND CONDITIONS EXISTING IN THE FIELD PRIOR TO CONSTRUCTION AND ORDERING OF MATERIALS.

THE CONTRACTOR SHALL BE REQUIRED TO PROVIDE ACCESS TO ABUTTING PROPERTY AT ALL TIMES DURING THE CONSTRUCTION OF THIS PROJECT.

THE CONTRACTOR SHALL CONTACT THE DISTRICT ONE TRAFFIC CONTROL SUPERVISOR AT KALPANA.KANNAN-HOSADURGA@ILLINOIS.GOV (72 HOURS IN ADVANCE OF BEGINNING WORK).

THESE PLANS HAVE BEEN PREPARED FROM NOTES RECEIVED FROM THE BUREAU OF MAINTENANCE BRIDGE INSPECTORS.

DO NOT SCALE PLANS FOR CONSTRUCTION DIMENSIONS.

PLAN DIMENSIONS AND DETAILS RELATIVE TO EXISTING PLANS ARE SUBJECT TO NOMINAL CONSTRUCTION VARIATIONS. THE CONTRACTOR SHALL FIELD VERIFY EXISTING DIMENTIONS AND DETAILS AFFECTING NEW CONSTRUCTION AND MAKE NECESSARY APPROVED ADJUSTMENTS PRIOR TO CONSTRUCTION OR ORDERING OF MATERIALS. SUCH VARIATIONS SHALL NOT BE CAUSE FOR ADDITIONAL COMPENSATION FOR A CHANGE IN SCOPE OF THE WORK, HOWEVER THE CONTRACTOR WILL BE PAID FOR THE QUANTITY ACTUALLY FURNISHED BASED AT THE UNIT PRICE BID FOR THE WORK.

REV. - MS

FILE NAME :	USER NAME : hassam	DESIGNED -	REVISED -	STATE OF ILLINOIS DEPARTMENT OF TRANSPORTATION	IL-43 (HARLEM AVE.) AT CAL SAG CHANNEL (SN 016-0323) INDEX OF SHEETS, STANDARDS, & GENERAL NOTES	F.A.P. RTE.	SECTION	COUNTY	TOTAL SHEETS	SHEET NO.	
pw\planroom.dot.illinois.gov\PIW\DOT\Documents\DOT Offices\District 1\Projects\DI01719\Design\DI01719-shr-gennote.dgn		CHECKED -	REVISED -			348	2018-093-B-R	COOK	19	2	
PLOT SCALE = 100.0000' / 1in.		DATE -	REVISED -			CONTRACT NO. 62H23					
Default						SCALE:	SHEET	OF	SHEETS	STA.	TO

ILLINOIS FED. AID PROJECT

SUMMARY OF QUANTITIES			TOTAL QUANTITIES	CONSTRUCTION TYPE CODE				
CODE NO	ITEM	UNIT		URBAN 80% FED 20% STATE 0013				
50500405	FURNISHING AND ERECTING STRUCTURAL STEEL	POUND	720	720				
52000020	PREFORMED JOINT SEAL 1 3/4"	FOOT	53	53				
52000600	FABRIC REINFORCED ELASTOMERIC TROUGH	FOOT	53	53				
67000400	ENGINEER'S FIELD OFFICE, TYPE A	CAL MO	6	6				
67100100	MOBILIZATION	L SUM	1	1				
70300904	PAVEMENT MARKING TAPE, TYPE IV 4"	FOOT	3300	3300				
* 78000200	THERMOPLASTIC PAVEMENT MARKING - LINE 4"	FOOT	225	225				
* 78009004	MODIFIED URETHANE PAVEMENT MARKING - LINE 4"	FOOT	225	225				
X0327980	PAVEMENT MARKING REMOVAL - WATER BLASTING	SO FT	1250	1250				
X0900046	PREFORMED JOINT SEAL, 1"	FOOT	105	105				
X0900052	PREFORMED JOINT SEAL 1 1/2"	FOOT	192	192				
X7010216	TRAFFIC CONTROL AND PROTECTION, (SPECIAL)	L SUM	1	1				
Z0001903	STRUCTURAL STEEL REMOVAL	POUND	720	720				
Z0001905	STRUCTURAL STEEL REPAIR	POUND	7400	7400				
Z0015550	DEBRIS REMOVAL	CU YD	1	1				
Z0016001	DECK SLAB REPAIR (FULL DEPTH, TYPE I)	SO YD	10	10				

SUMMARY OF QUANTITIES			TOTAL QUANTITIES	CONSTRUCTION TYPE CODE				
CODE NO	ITEM	UNIT		URBAN 80% FED 20% STATE 0013				
Z0016200	DECK SLAB REPAIR (PARTIAL)	SO YD	56	56				
Z0030850	TEMPORARY INFORMATION SIGNING	SO FT	154.2	154.2				
Z0041895	POLYMER CONCRETE	CU FT	0.1	0.1				
	* SPECIALTY ITEM							

FILE NAME: USER NAME: hssomn DESIGNED - REVISIONS -
 OFFICES/DISTRICT/PROJECTS/DOT/9/CAD/Design/00779/00779.dwg
 PLOT SCALE = 100.0000 "/ in. CHECKED - REVISIONS -
 PLOT DATE = 2/11/2009 DATE - REVISIONS -

STATE OF ILLINOIS
 DEPARTMENT OF TRANSPORTATION

IL-43 (HARLEM AVE.) AT CAL SAG CHANNEL
 SUMMARY OF QUANTITIES

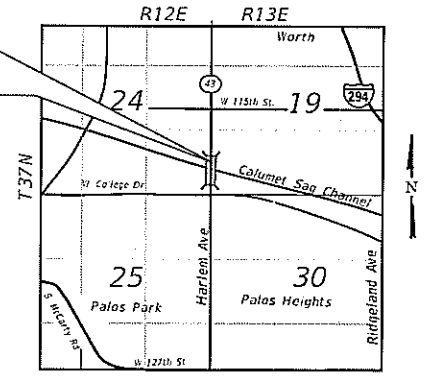
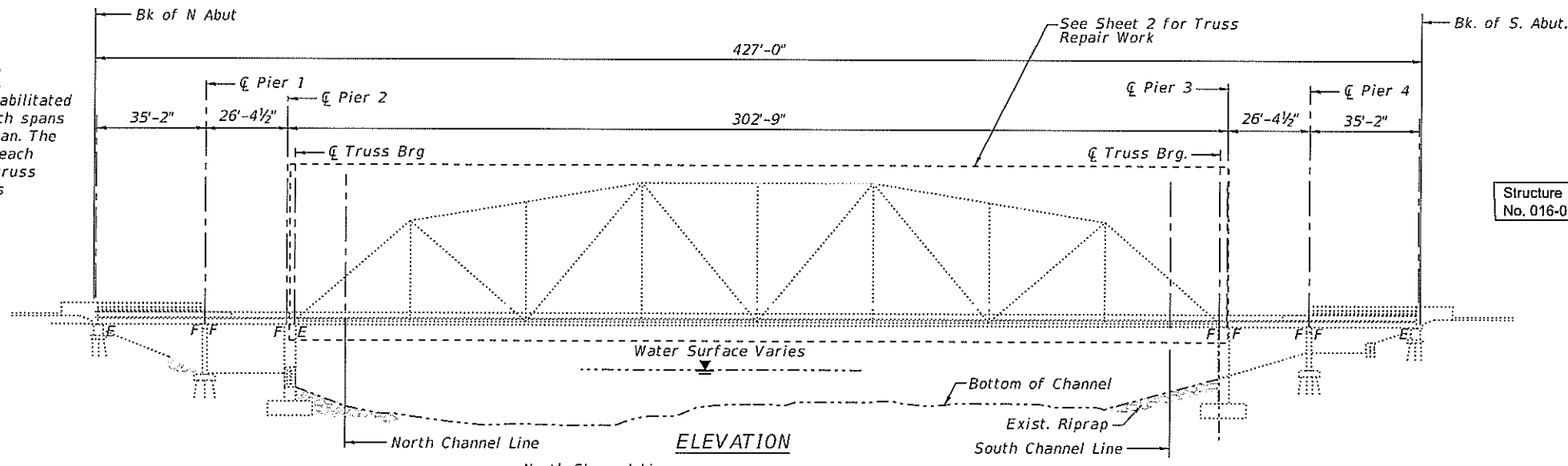
SCALE: SHEET NO. OF SHEETS STA. TO STA.

F.A.P. RTE. SECTION COUNTY TOTAL SHEETS SHEET NO.
 348 2018-093-B-R COOK 19 3
 CONTRACT NO. 62H23
 FED. ROAD DIST. NO. 1 ILLINOIS FED. AID PROJECT

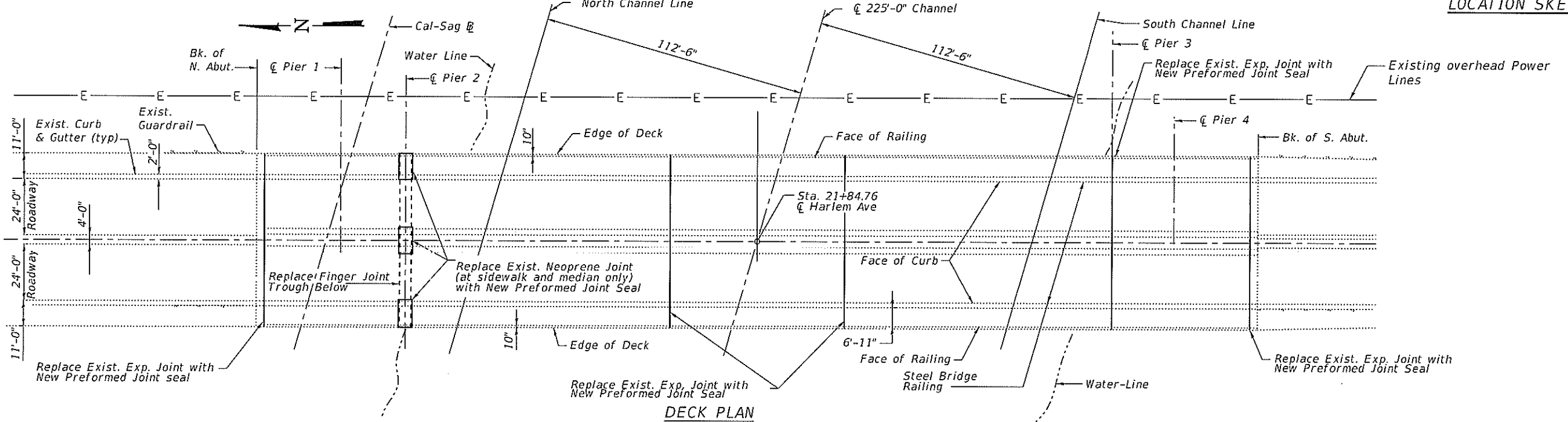
REV. - MS

EXISTING BRIDGE DESCRIPTION

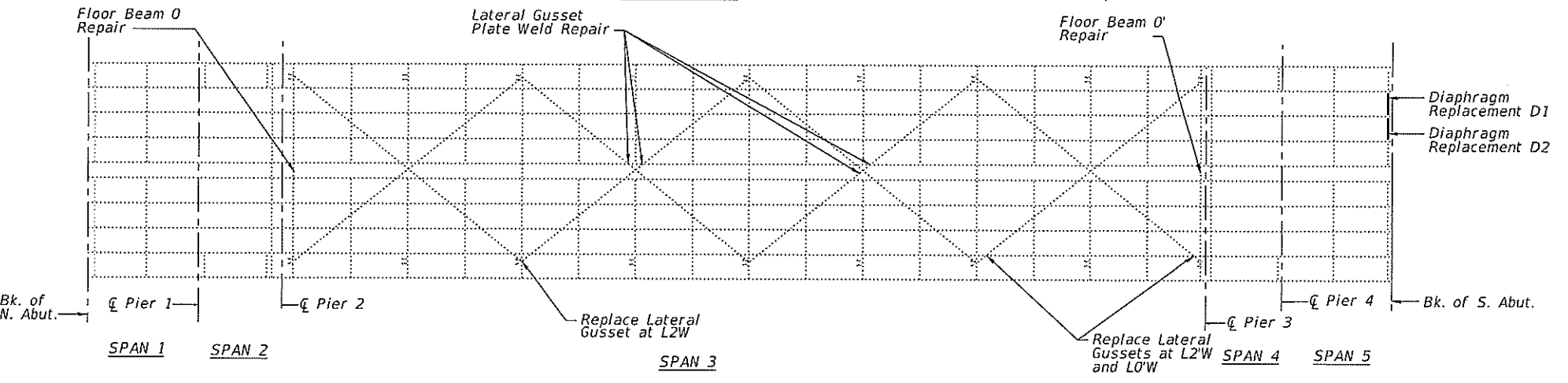
This 5-span bridge, constructed in 1964 and rehabilitated in 1994, consists of two steel multibeam approach spans on each end of a Warren Through Truss main span. The bridge carries two lanes of vehicular traffic in each direction with a separated sidewalk along each truss and a raised median. The steel superstructure is supported by concrete piers and abutments.



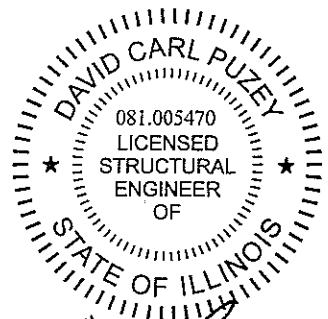
LOCATION SKETCH



DECK PLAN



FRAMING PLAN



David Carl Puzey 3/21/19
Expires 4/30/20

FILE NAME = P:\2018\0916\2018-0916-2575C - IL-83 AND IL-43 STEEL TRUSS REPAIRS (DC)\Drawings\Microstation\New-Iem Ave Bridge No 016-0323\01-General Plan & Elevation\1.dgn

USER NAME = TCS	DESIGNED - ARB	REVISD -	STATE OF ILLINOIS DEPARTMENT OF TRANSPORTATION	GENERAL PLAN & ELEVATION STRUCTURE NO. 016-0323		F.A.P. RTE.	SECTION	COUNTY	TOTAL SHEETS	SHEET NO.
PLOT SCALE = 48.0000' / 1" =	CHECKED - DC	REVISD -		348	2018-093-B-R	COOK	19	4		
PLOT DATE = 1/18/2019	DRAWN - TCS	REVISD -		SHEET NO. 1 OF 10 SHEETS		CONTRACT NO. 62H23		ILLINOIS FED. AID PROJECT		
	CHECKED - DC/ARB	REVISD -								

GENERAL NOTES

1. Plan dimensions and details relative to the existing structure have been taken from existing plans and are subject to nominal construction variations. It shall be the Contractor's responsibility to field verify such dimensions and details and make necessary approved adjustments prior to construction or ordering materials. Such variation shall not be cause for additional compensation for a change in the scope of work; however, the Contractor will be paid for the quantity actually furnished at the unit price bid for the work.
2. Contractor shall not scale dimensions from these plans for construction purposes. Scales shown are for information only.
3. Repairs shown are based on the information available at the time of plan preparation and are for bidding purposes only. Actual areas to be repaired shall be determined by the Engineer in the field at the time of construction.
4. All new structural steel shall be AASHTO M-270 Grade 36 or Grade 50, unless noted otherwise.
5. All new bolts shall be 7/8 inch diameter AASHTO M164 Type 1 bolts with AASHTO M291 Grade DH nuts and AASHTO M293 hardened washers, unless noted otherwise. All bolts shall be installed in standard holes (bolt diameter plus 1/16 inch) whether hole is new or existing.
6. Repairs to truss diagonal and vertical members (Sheet 5) and the lateral gusset plate replacement (Sheet 6) shall be performed when live load is restricted from the lane nearest to the truss being repaired and the sidewalk is closed.
7. No field welding is permitted except as specified in the Contract Documents. All field welding shall be performed in accordance with the American Welding Society (AWS) D1.5 Bridge Welding Code.
8. Cost of removal and re-installation of all members necessary to complete the work detailed on the plans and as specified in the Special Provisions shall be included with "Structural Steel Repair".
9. The existing structural steel coating contains lead. The Contractor shall take appropriate precautions to deal with the presence of lead on this project.
10. Existing structural steel that will be in contact with new structural steel shall be cleaned and painted prior to erection as required by the Special Provision, "Cleaning and Painting Contact Surface Areas of Existing Steel Structures."
11. All new steel shall be shop painted with inorganic zinc rich primer per AASHTO M300, Type 1. Cost included with Structural Steel Repair. All faying surfaces of bolted connections shall meet the requirements for a class A surface as defined by AASHTO.
12. Cleaning and painting of all structural steel repairs shall meet the requirements for Primary Connections as specified in the special provision for "Cleaning and Painting Contact Surface Areas of Existing Steel Structures."
13. Do not scale plans for construction dimensions.
14. The Contractor shall obtain Coast Guard approval for any work that may interfere with navigational operations of the navigable waters. A work plan shall be prepared by the Contractor, reviewed and approved by the Engineer, and submitted by the Engineer to the Coast Guard at the address listed below for approval:
 Bridge Administrator
 U.S. Coast Guard
 Ninth Coast Guard District
 1240 E. Ninth St.
 Cleveland, OH 44199-2060
15. The Contractor shall take the necessary precautions to insure that no debris will endanger or interfere with any activities beneath the bridge according to Article 107.09 of the Standard Specifications and shall prevent any debris from falling in the river. This work will not be paid for separately, but shall be included in the Contract unit price for the appropriate pay item involved and no additional compensation will be allowed.

BILL OF MATERIAL

ITEM	UNIT	QUANTITY
Structural Steel Repair	Pound	7400
Polymer Concrete	Cu.Yd.	0.1
Fabric Reinforced Elastomeric Trough	Foot	53
Preformed Joint Seal 1"	Foot	105
Preformed Joint Seal 1½"	Foot	192
Preformed Joint Seal 1¾"	Foot	53
Debris Removal	Cu.Yd.	1.0
Deck Slab Repair (Full Depth)	Sq.Yd.	10
Deck Slab Repair (Partial Depth)	Sq.Yd.	56
Structural Steel Removal	Pound	720
Furnishing & Erecting Structural Steel	Pound	720

FILE NAME = F:\2015\2015-2-xx\2015-2575-C - IL-83 AND IL-43 STEEL TRUSS REPAIRS (DC)\Drawings\Microstation\Hwy Lem Ave Bridge No. 016-0323\02-General\Notes.dgn

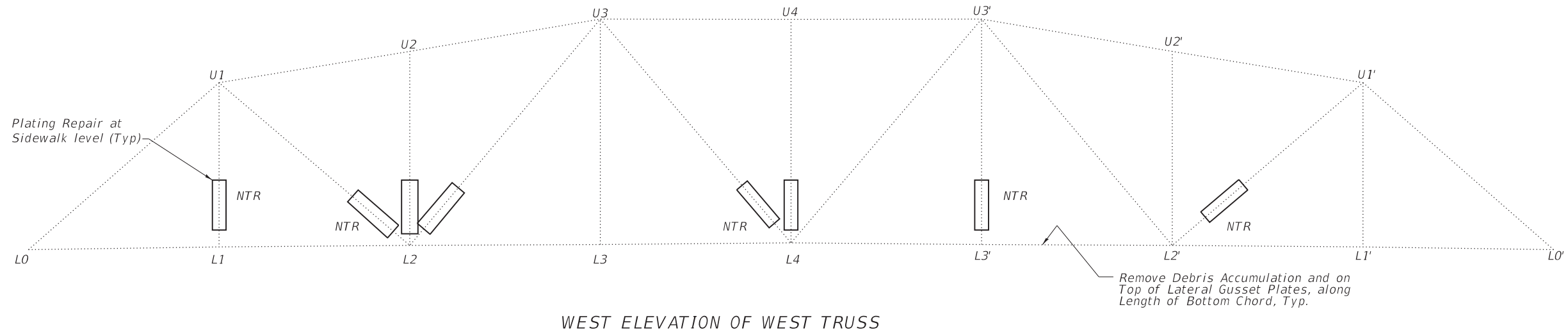
USER NAME = TCS	DESIGNED - ARB	REVISED -
	CHECKED - DC	REVISED -
PLOT SCALE = 48.0000' / in.	DRAWN - TCS	REVISED -
PLOT DATE = 1/18/2019	CHECKED - DC/ARB	REVISED -

**STATE OF ILLINOIS
DEPARTMENT OF TRANSPORTATION**

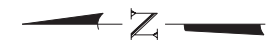
**GENERAL NOTES
STRUCTURE NO. 016-0323**

SHEET NO. 2 OF 10 SHEETS

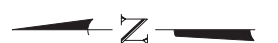
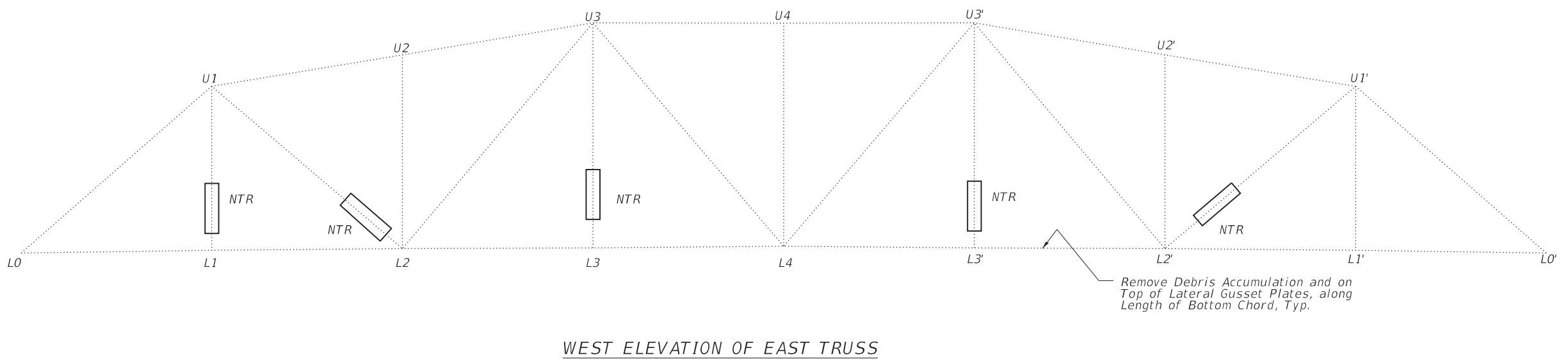
F.A.P. RTE.	SECTION	COUNTY	TOTAL SHEETS	SHEET NO.
348	2018-093-B-R	COOK	19	5
ILLINOIS FED. AID PROJECT			CONTRACT NO. 62H23	



See Details on Sheet 5 for Truss Member Repairs at Sidewalk



Repair Locations Designated "NTR" shall Conform to the Impact Test Requirements for Fracture Critical Tension Components in AASHTO M270, Zone 2.



BILL OF MATERIAL

ITEM	UNIT	QUANTITY
Debris Removal	Cu.Yd.	1.0

FILE NAME = F:\2015\2015-2-xx\2015-2575-C - IL-83 AND IL-43 STEEL TRUSS REPAIRS (DC)\Drawings\Microstation\Herlem Ave Bridge No. 016-0323\03-TrussRepair.dgn

USER NAME = TCS	DESIGNED - ARB	REVISED -
PLOT SCALE = 24.0000' / in.	CHECKED - DC	REVISED -
PLOT DATE = 1/18/2019	DRAWN - TCS	REVISED -
	CHECKED - DC/ARB	REVISED -

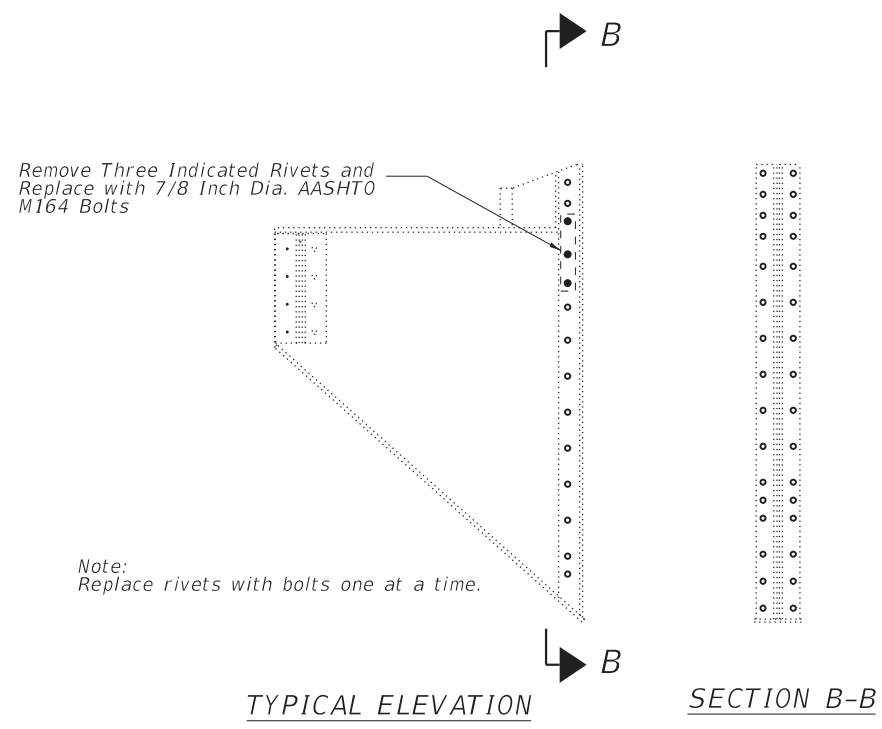
**STATE OF ILLINOIS
DEPARTMENT OF TRANSPORTATION**

**TRUSS DETAIL
STRUCTURE NO. 016-0323**

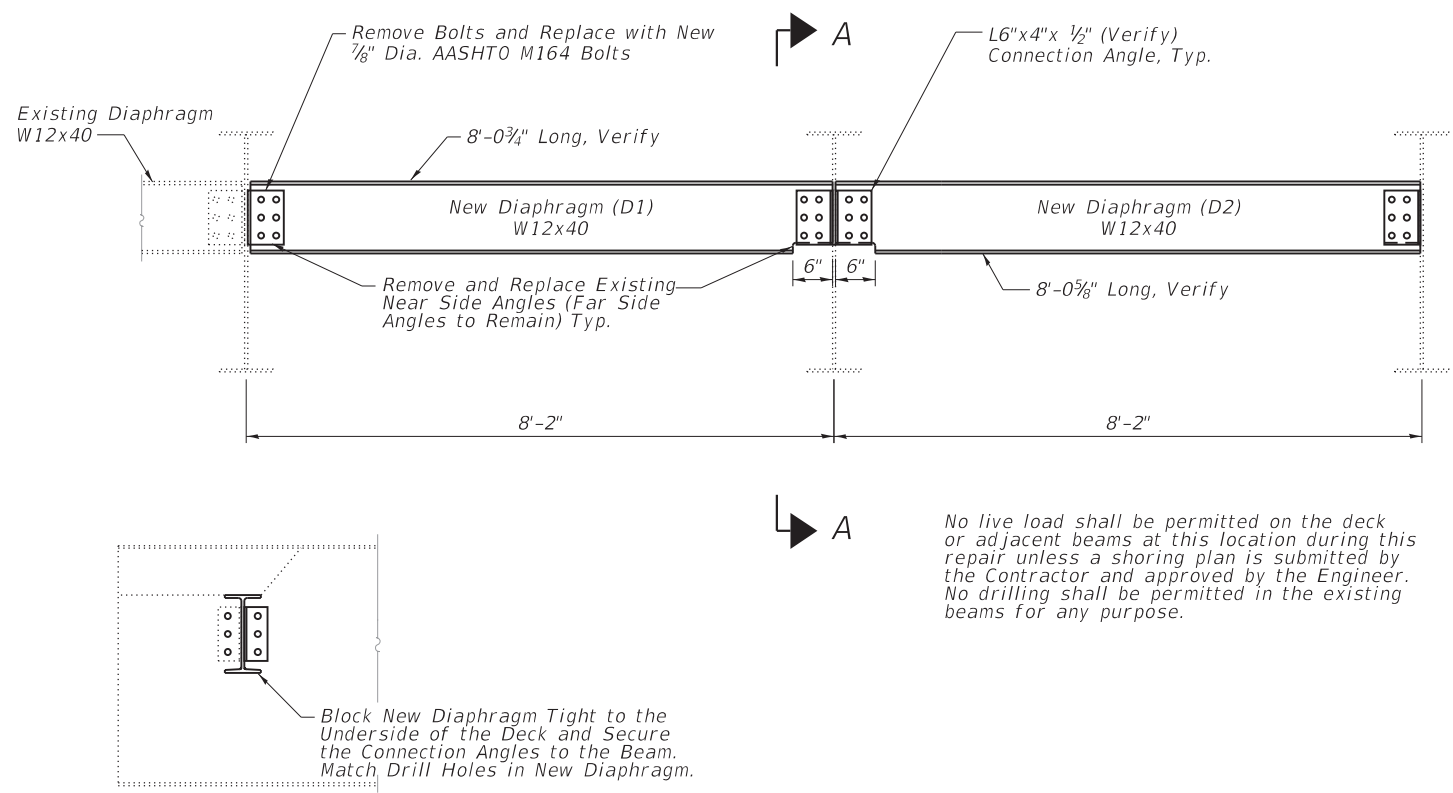
SHEET NO. 3 OF 10 SHEETS

F.A.P. RTE.	SECTION	COUNTY	TOTAL SHEETS	SHEET NO.
348	2018-093-B-R	COOK	19	6
CONTRACT NO. 62H23				
ILLINOIS FED. AID PROJECT				

FILE NAME = F:\2015\2015.2\2015.2575.C - IL-83 AND IL-43 STEEL TRUSS REPAIRS (DC)\Drawings\Microstation\Hw\Iem Ave Bridge No 016-0323\04-SteelWalk Bracket-3.dgn



**RIVET REPLACEMENT AT
CANTILEVERED FLOOR BEAMS**
(Repair applies to all cantilevered floor beams except for those at LOE, LO'E, LOW and L'OW, 14 locations total)



**ELEVATION OF PROPOSED DIAPHRAGMS
AT SOUTH ABUTMENT**

No live load shall be permitted on the deck or adjacent beams at this location during this repair unless a shoring plan is submitted by the Contractor and approved by the Engineer. No drilling shall be permitted in the existing beams for any purpose.

Note:
Removal of existing diaphragm components billed as "Structural Steel Removal".
New diaphragms and connections billed as "Furnishing & Erecting Structural Steel".

BILL OF MATERIAL

ITEM	UNIT	QUANTITY
Structural Steel Repair	Pound	40
Structural Steel Removal	Pound	720
Furnishing & Erecting Structural Steel	Pound	720

USER NAME = TCS	DESIGNED - ARB	REVISED -
	CHECKED - DC	REVISED -
PLOT SCALE = 2.6667' / in.	DRAWN - TCS	REVISED -
PLOT DATE = 1/18/2019	CHECKED - DC/ARB	REVISED -

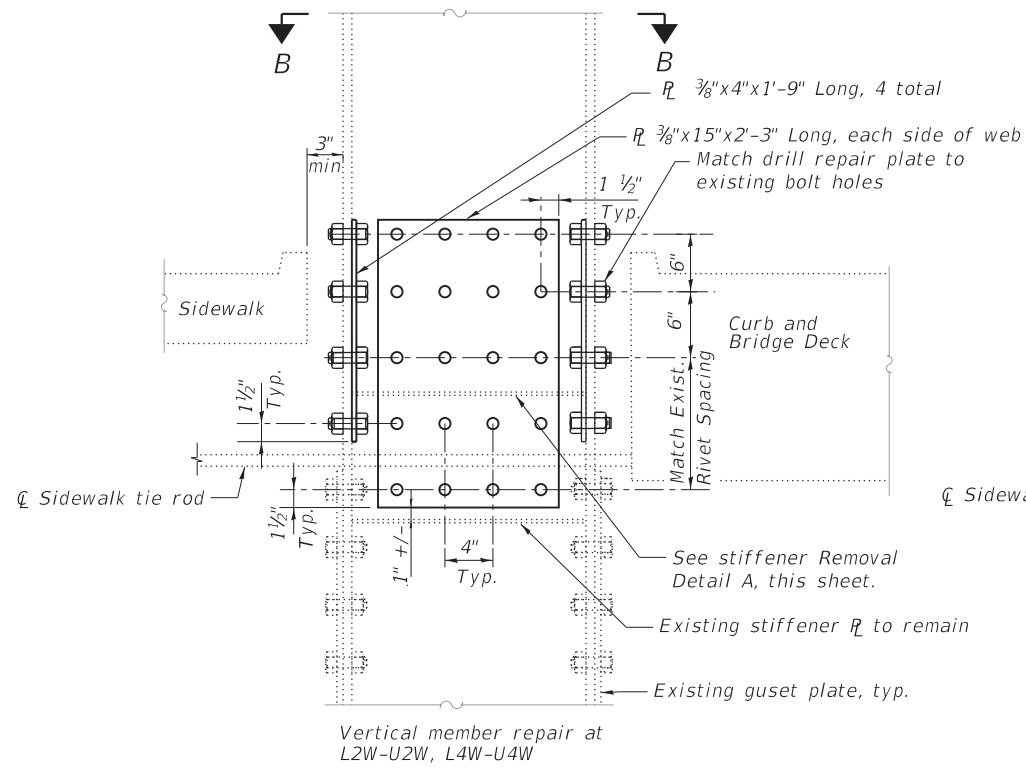
**STATE OF ILLINOIS
DEPARTMENT OF TRANSPORTATION**

**FLOOR BEAM AND DIAPHRAGMS DETAILS
STRUCTURE NO. 016-0323**

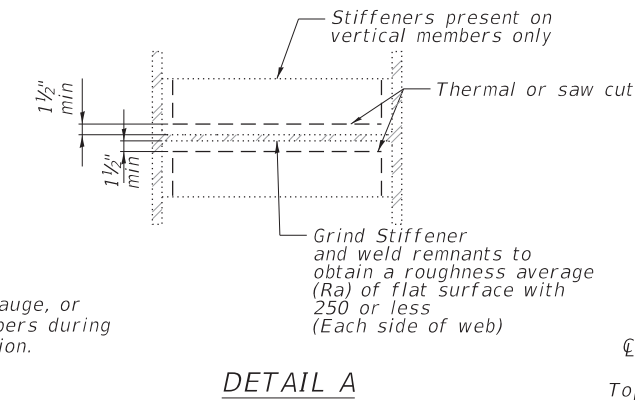
SHEET NO. 4 OF 10 SHEETS

F.A.P. RTE.	SECTION	COUNTY	TOTAL SHEETS	SHEET NO.
348	2018-093-B-R	COOK	19	7
CONTRACT NO. 62H23				
ILLINOIS FED. AID PROJECT				

FILE NAME = F:\2015\2015-2-xx\2015-2575-C - IL-93 AND IL-43 STEEL TRUSS REPAIRS (DC)\Drawings\Microstation\Herlem Ave Bridge No 016-0323\05-Truss Repairs_5.dgn

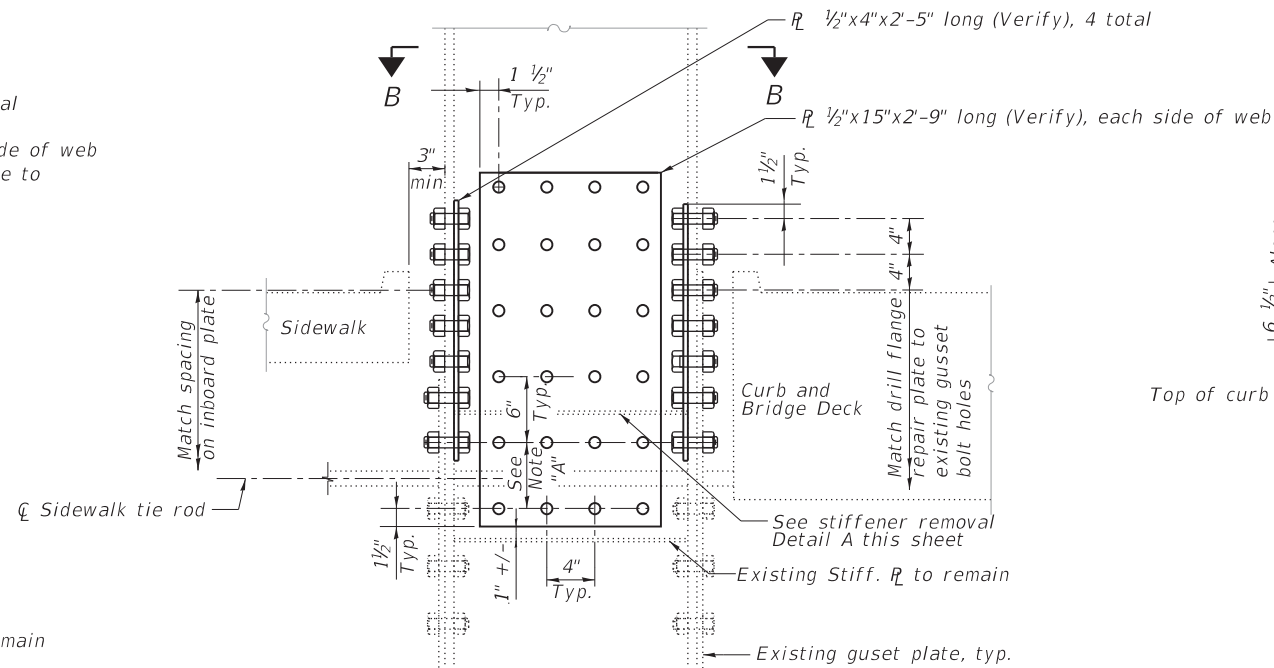


DETAIL 1



DETAIL A

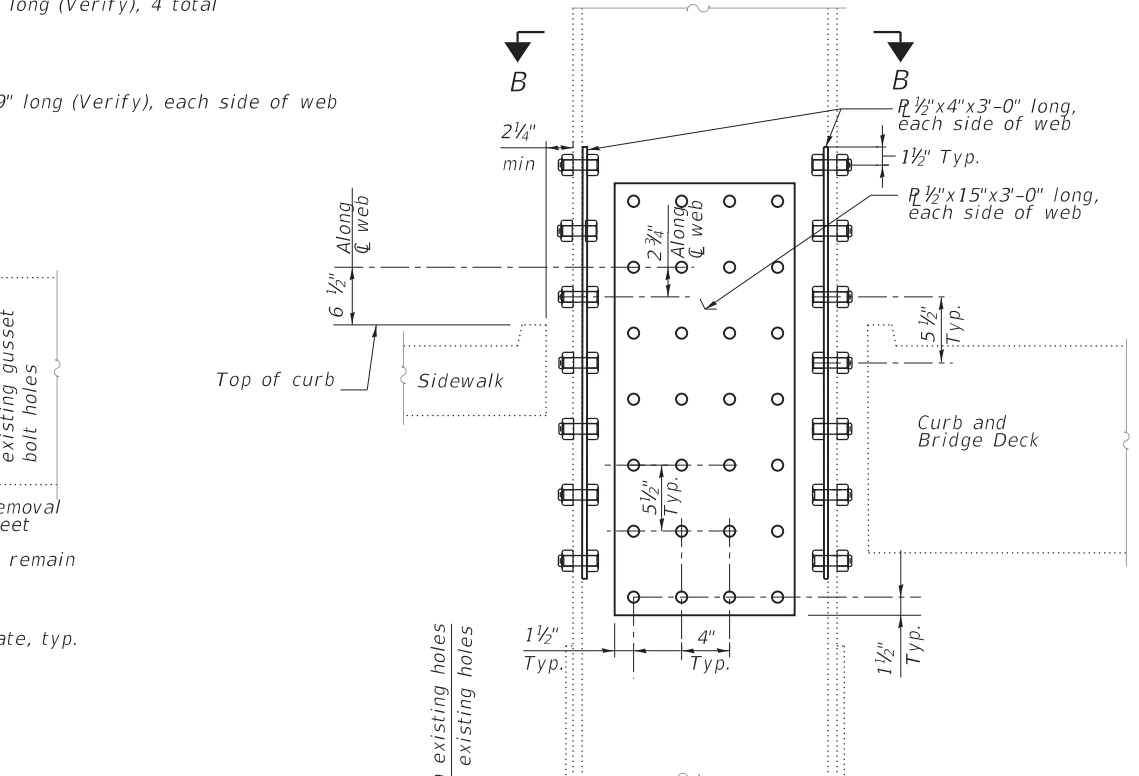
Note:
Contractor shall not mar, gauge, or damage existing steel members during cutting and grinding operation.



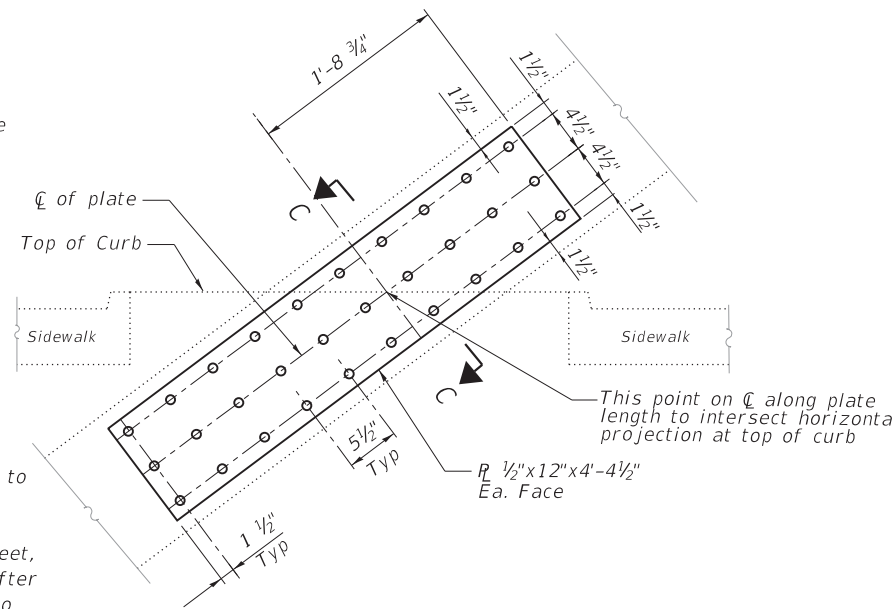
DETAIL 2

Note "A":
At These Two Rows, Match Spacing of Existing Gusset Plate Holes in New Web Plate.

TRUSS VERTICAL AND DIAGONAL REPAIRS

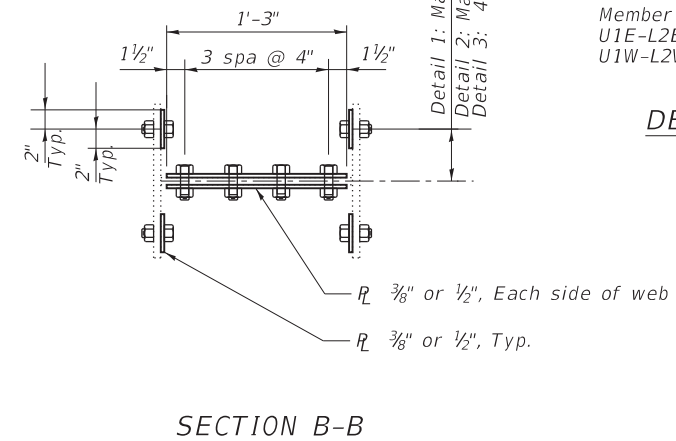


DETAIL 3

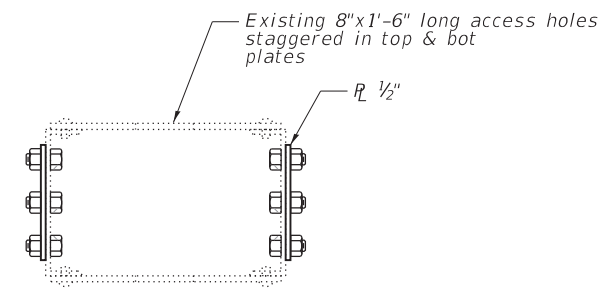


DETAIL 4

Diagonal member repair at L2W-U3W



SECTION B-B



SECTION C-C

General Notes:

- Repairs to truss diagonal and vertical members (Sheet 5) and the lateral gusset plate replacement (Sheet 6) shall be performed when live load is restricted from the lane nearest to the truss being repaired and the sidewalk is closed.
- For each truss diagonal and vertical member repair shown in Details 1 through 3 on this sheet, the pair of stiffeners shall be removed and the web repair plates shall be installed first. After the installation of the web plates, the flange repair plates shall be installed one at a time to minimize the number of rivets/bolts removed from the existing connection.
- Installation of steel repairs will likely require compact equipment, such as magnetic drills, in order to fit within the openings in the concrete sidewalk or within the box-shaped compression diagonals.
- Hardened washers shall be installed beneath the head of each bolt if the head will be turned to tension the bolt.

BILL OF MATERIAL

ITEM	UNIT	QUANTITY
Structural Steel Repair	Pound	3120

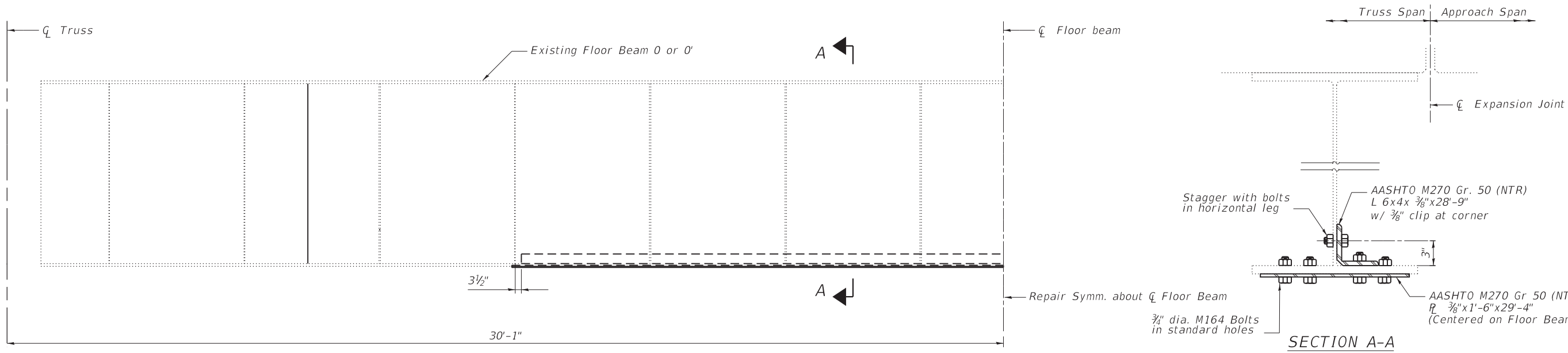
**STATE OF ILLINOIS
DEPARTMENT OF TRANSPORTATION**

**TRUSS REPAIRS
STRUCTURE NO. 016-0323**

SHEET NO. 5 OF 10 SHEETS

F.A.P. RTE.	SECTION	COUNTY	TOTAL SHEETS	SHEET NO.
348	2018-093-B-R	COOK	19	8
CONTRACT NO. 62H23				

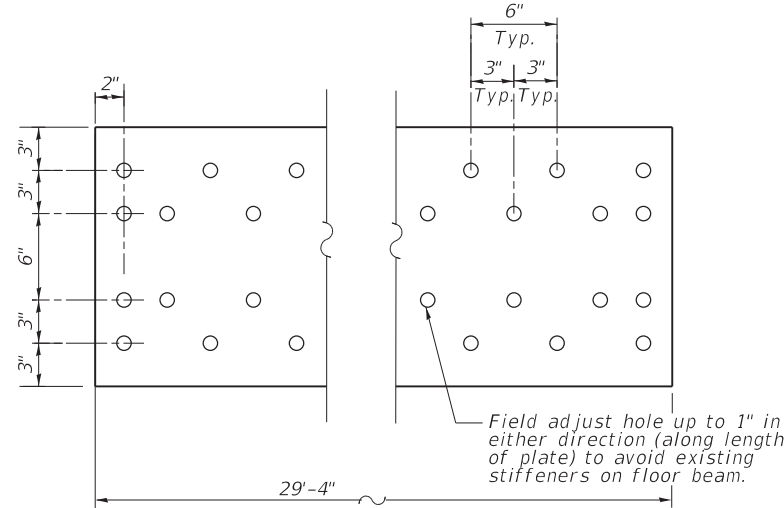
ILLINOIS FED. AID PROJECT



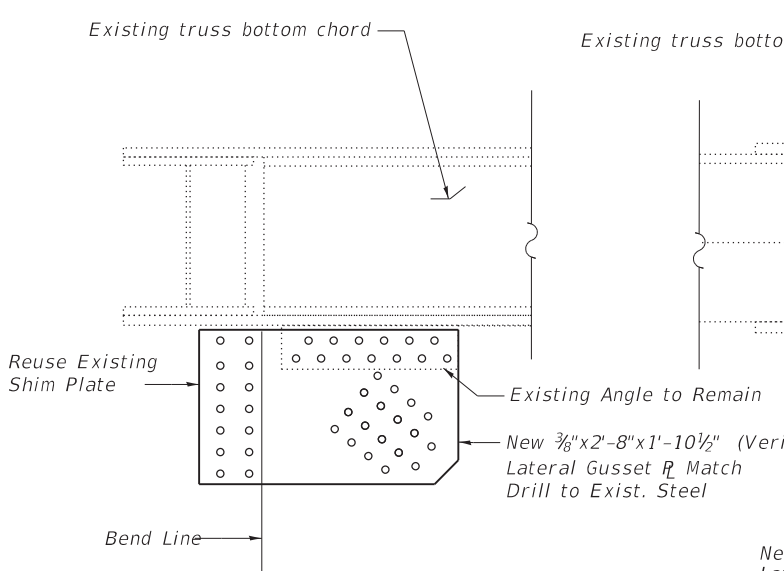
HALF ELEVATION AT FBO AND FBO'

BILL OF MATERIAL

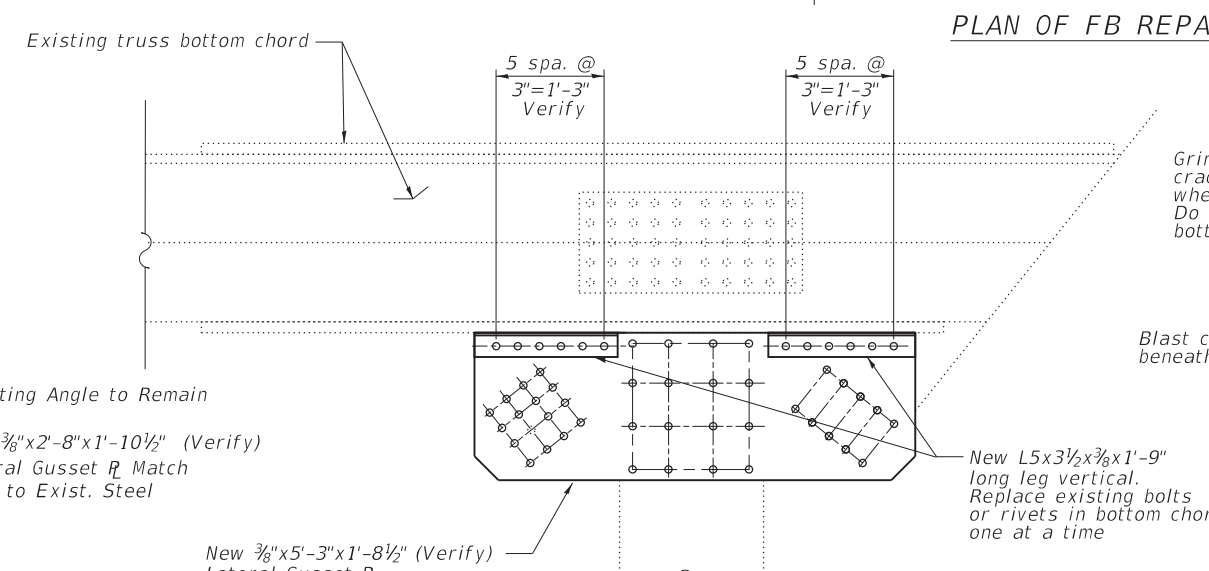
ITEM	UNIT	QUANTITY
Structural Steel Repair	Pound	3130



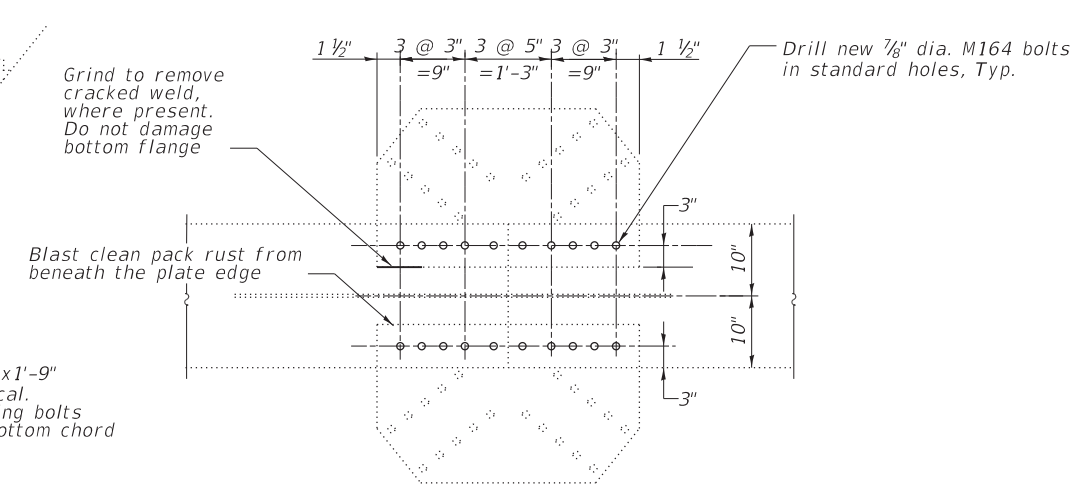
PLAN OF FB REPAIR PLATE



LATERAL GUSSET PLATE REPLACEMENT AT LO'W



LATERAL GUSSET PLATE REPLACEMENT AT L2'W AND L2'W



LATERAL GUSSET REPAIR AT FB3 AND FB3'

Note
Contractor to provide temporary support for the lateral members prior to removal of existing gusset plates

FILE NAME = F:\2015\2015-2-xx\2015-2575-C - IL-83 AND IL-43 STEEL TRUSS REPAIRS (DC)\Drawings\Microstation\Hw\lem Ave Bridge No. 015-0323\06-FloorBeam-6.dgn

USER NAME = TCS	DESIGNED - ARB	REVISED -
PLOT SCALE = 3.3333' / in.	CHECKED - DC	REVISED -
PLOT DATE = 1/18/2019	DRAWN - TCS	REVISED -
	CHECKED - DC/ARB	REVISED -

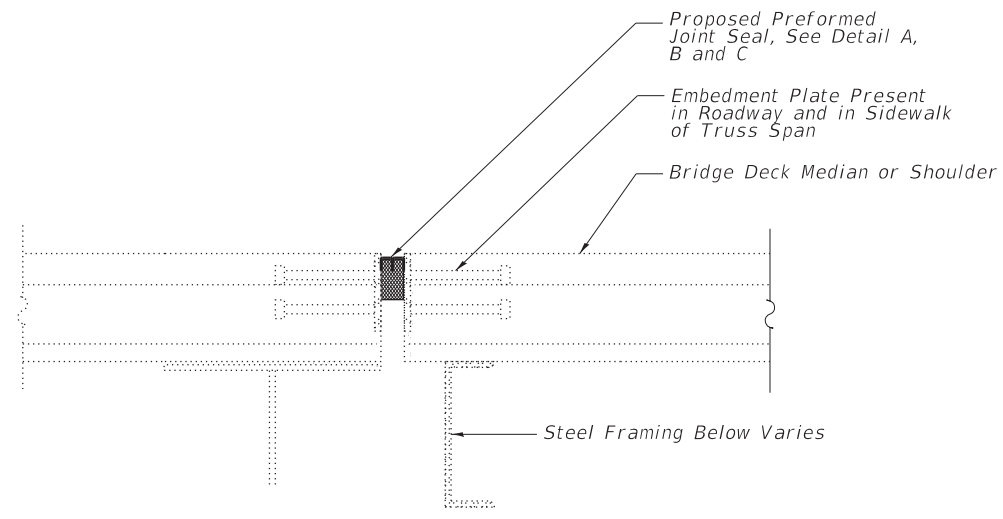
STATE OF ILLINOIS
DEPARTMENT OF TRANSPORTATION

FLOOR BEAM REPAIR
STRUCTURE NO. 016-0323

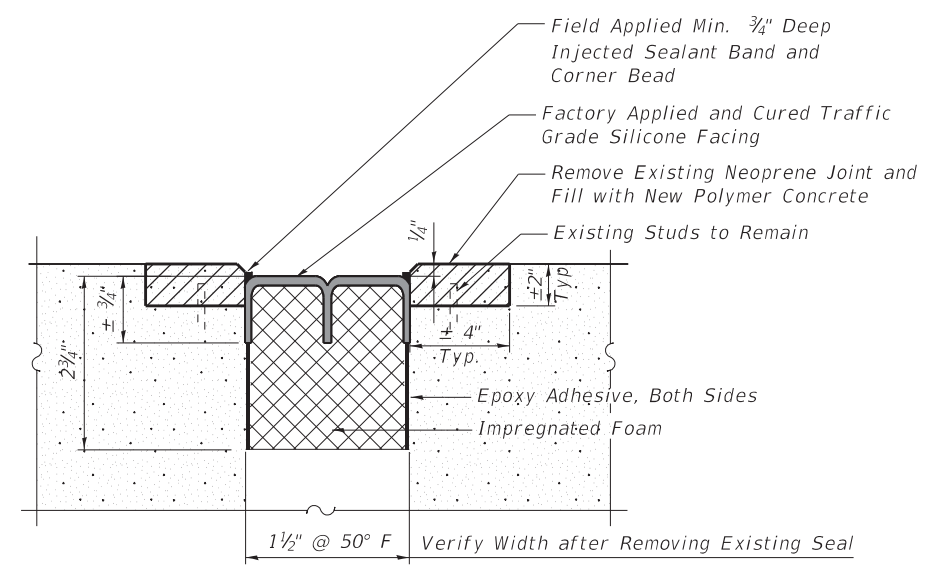
SHEET NO. 6 OF 10 SHEETS

F.A.P. RTE.	SECTION	COUNTY	TOTAL SHEETS	SHEET NO.
348	2018-093-B-R	COOK	19	9
CONTRACT NO. 62H23				
ILLINOIS FED. AID PROJECT				

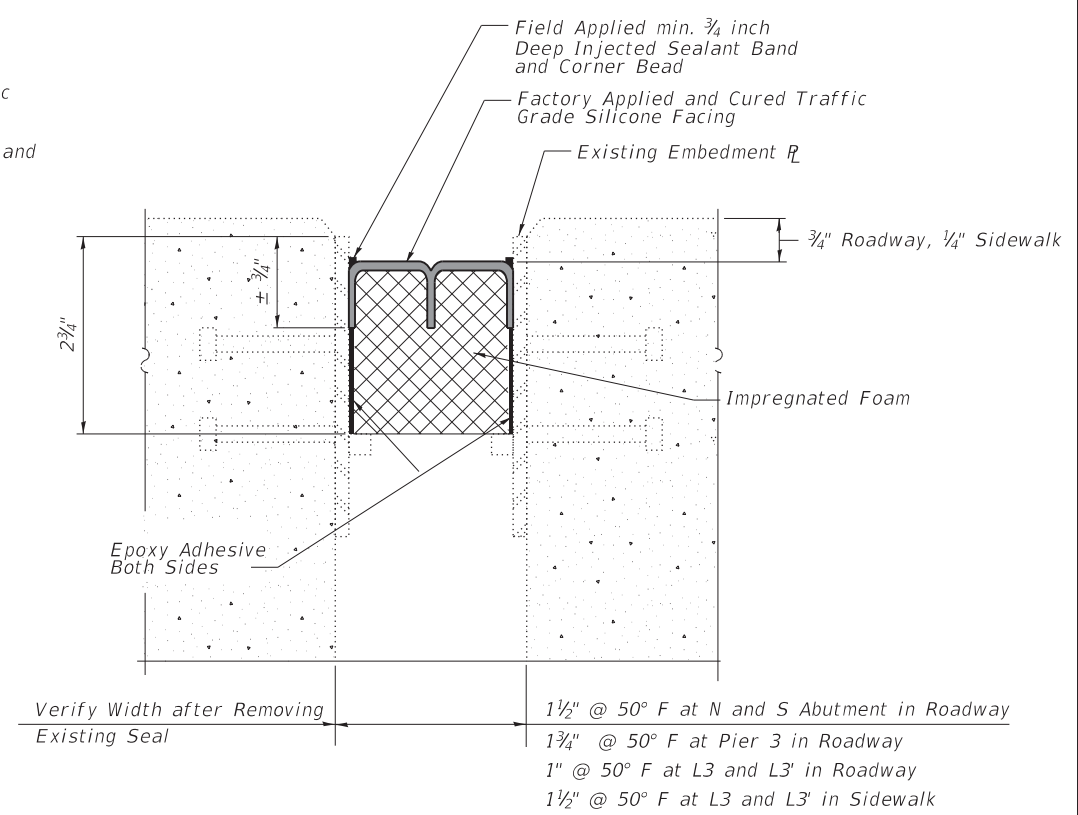
FILE NAME = F:\2015\2015-2-xx\2015-2575-C - IL-83 AND IL-43 STEEL TRUSS REPAIRS (DC)\Drawings\Microstation\Hem Ave Bridge No. 016-0323\07-PreformedJointSeal.dgn



TYPICAL JOINT CROSS SECTION

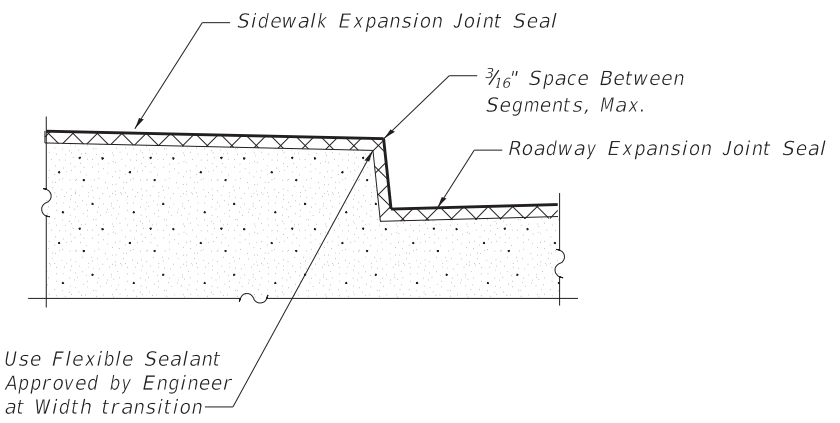


PREFORMED JOINT SEAL - DETAIL A
 At Sidewalk and Median over Pier 2

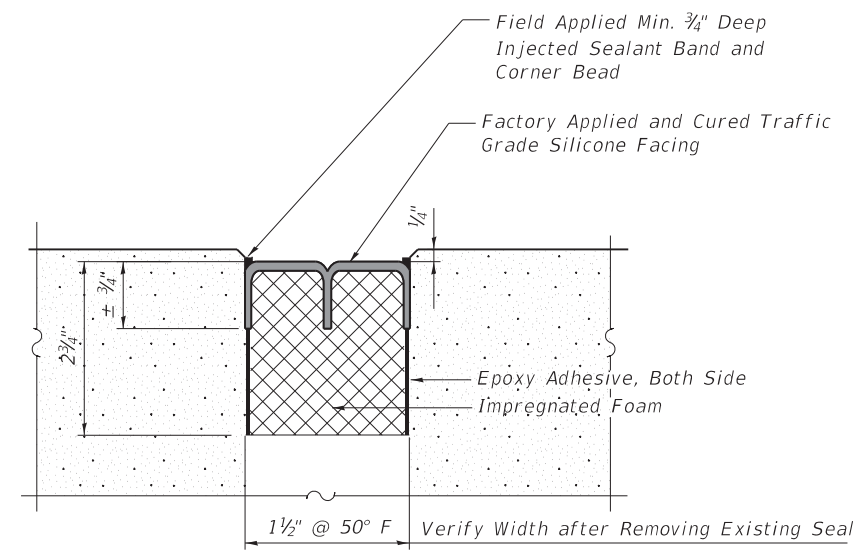


PREFORMED JOINT SEAL DETAIL B
 At Abutments, Pier 3 and within Truss Span

- Notes:**
- The new joint shall be a "Preformed, "Pre-Compressed, Silicone Coated, Self-Expanding Sealant System" and paid for as Preformed Joint Seal. See Special Provision "Preformed Bridge Joint Seal (PBJS).
 - When cracked or deteriorated, the concrete along the edge of the joint shall be repaired prior to installing the joint seal.



SIDEWALK EXPANSION JOINT TRANSITION



PREFORMED JOINT SEAL - DETAIL C
 At Sidewalk Over Pier 3

BILL OF MATERIAL

ITEM	UNIT	QUANTITY
Polymer Concrete	Cu.Yd.	0.1
Preformed Joint Seal 1 3/4"	Foot	53
Preformed Joint Seal 1 1/2"	Foot	192
Preformed Joint Seal 1"	Foot	105

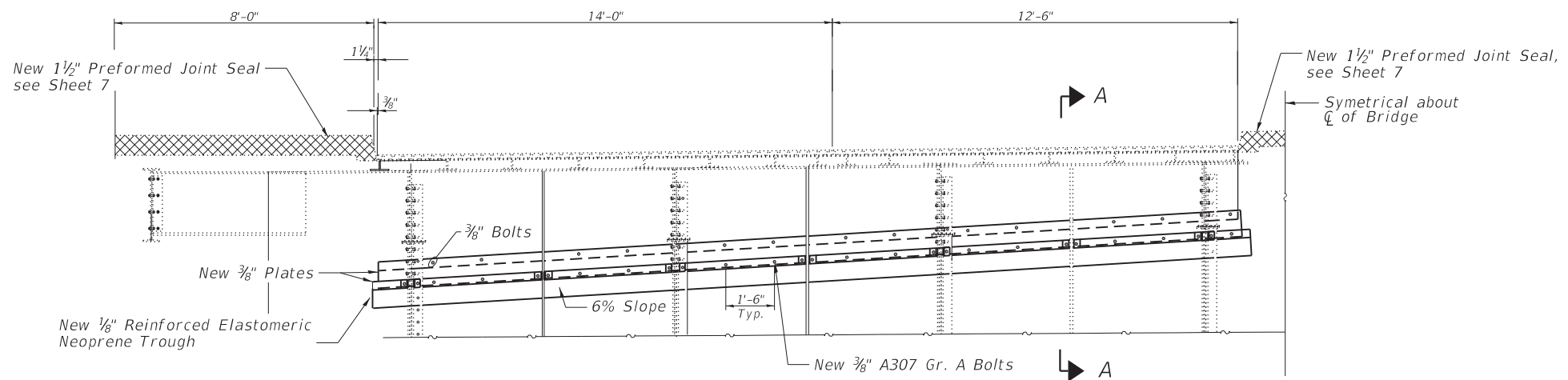
USER NAME = TCS	DESIGNED - ARB	REVISED -
PLOT SCALE = 1.3333' / in.	CHECKED - DC	REVISED -
PLOT DATE = 1/18/2019	DRAWN - TCS	REVISED -
	CHECKED - DC/ARB	REVISED -

STATE OF ILLINOIS
 DEPARTMENT OF TRANSPORTATION

PREFORMED JOINT SEAL
 STRUCTURE NO. 016-0323

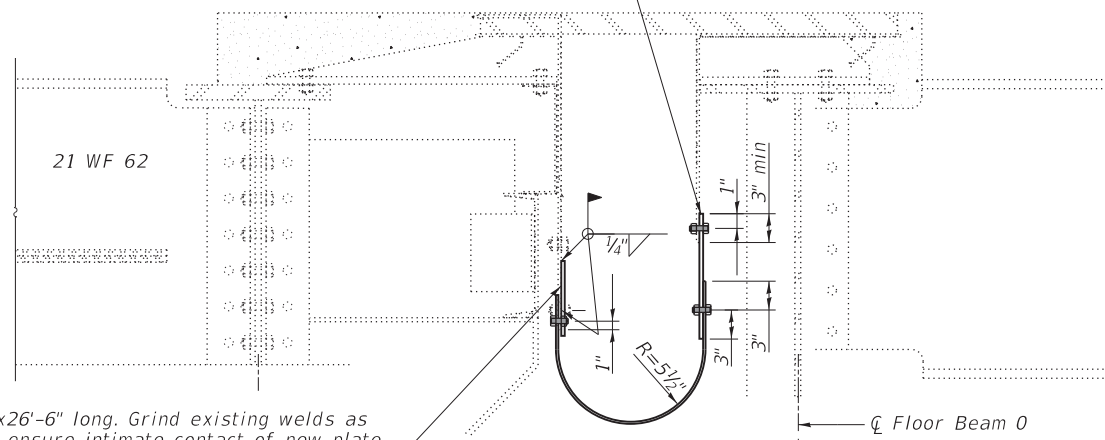
SHEET NO. 7 OF 10 SHEETS

F.A.P. RTE.	SECTION	COUNTY	TOTAL SHEETS	SHEET NO.
348	2018-093-B-R	COOK	19	10
CONTRACT NO. 62H23				
ILLINOIS FED. AID PROJECT				

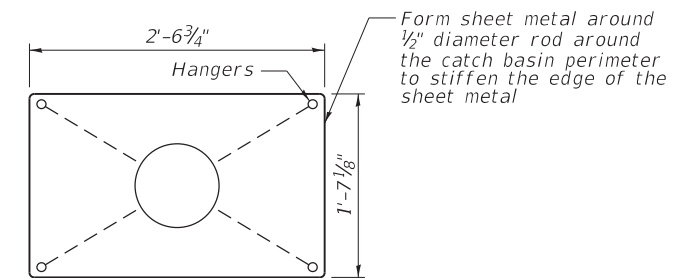


HALF ELEVATION OF JOINT TROUGH AT PIER 2

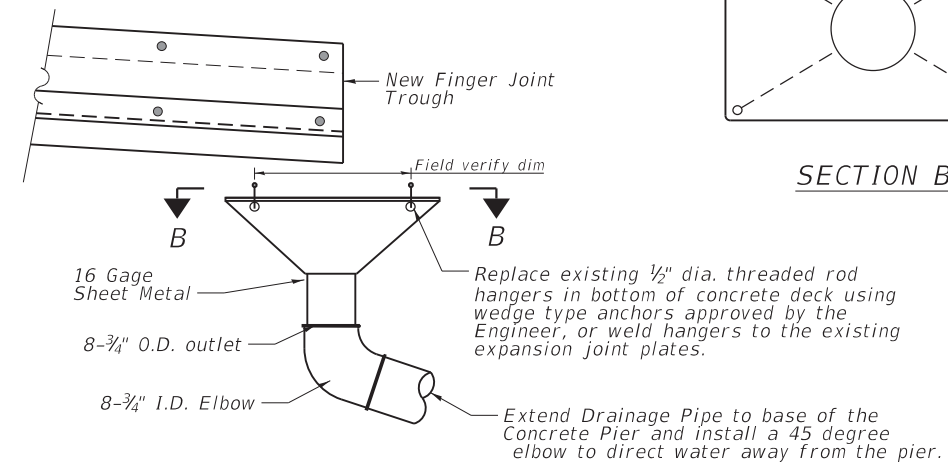
Remove exist. R and connect new R $3/8 \times 12 \times 26 \text{--}6$ long w/ $3/8$ A307 Gr.A bolts @ 18" (w/ M293 washers)



SECTION A-A



SECTION B-B



CATCH BASIN
(2- Required)

Note:
The cost of the two catch basins and drainage pipe extensions shall be incidental to Fabric Reinforced Elastomeric Trough.

BILL OF MATERIAL

ITEM	UNIT	QUANTITY
Fabric Reinforced Elastomeric Trough	Foot	53
Structural Steel Repair	Pound	1110

FILE NAME = F:\2015\2015-2-xx\2015-2575-C - IL-93 AND IL-43 STEEL TRUSS REPAIRS (DC)\Drawings\Microstation\Hwy\em Ave Bridge No 016-0323\08-TRough Detail-8.dgn

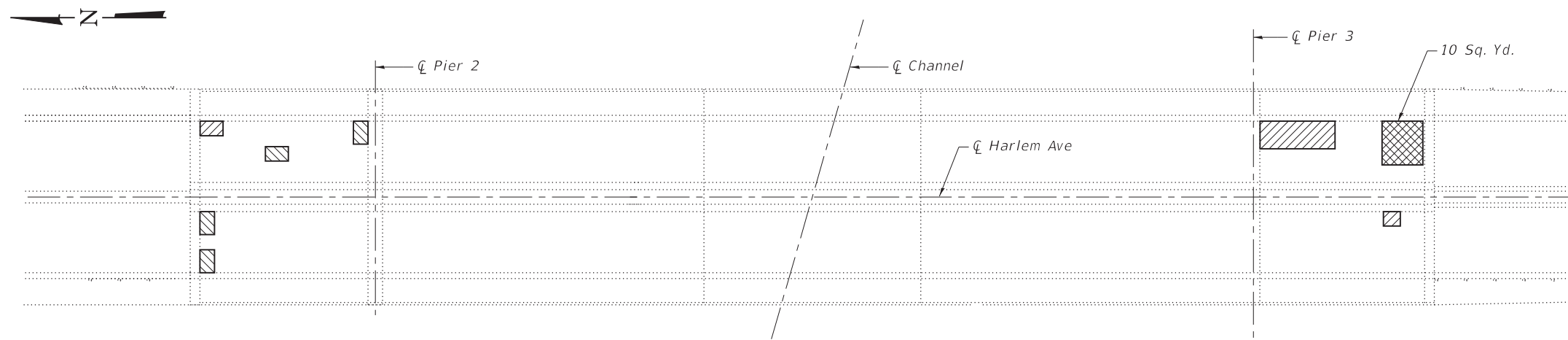
USER NAME = TCS	DESIGNED - ARB	REVISED -
PLOT SCALE = 1.6667' / in.	CHECKED - DC	REVISED -
PLOT DATE = 1/18/2019	DRAWN - TCS	REVISED -
	CHECKED - DC/ARB	REVISED -

STATE OF ILLINOIS
DEPARTMENT OF TRANSPORTATION

DRAINAGE TROUGH DETAIL
STRUCTURE NO. 016-0323

SHEET NO. 8 OF 10 SHEETS

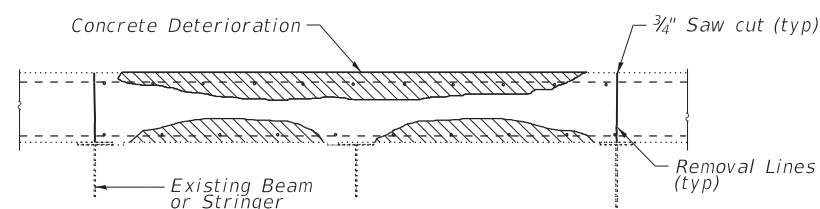
F.A.P. RTE.	SECTION	COUNTY	TOTAL SHEETS	SHEET NO.
348	2018-093-B-R	COOK	19	11
CONTRACT NO. 62H23				
ILLINOIS FED. AID PROJECT				



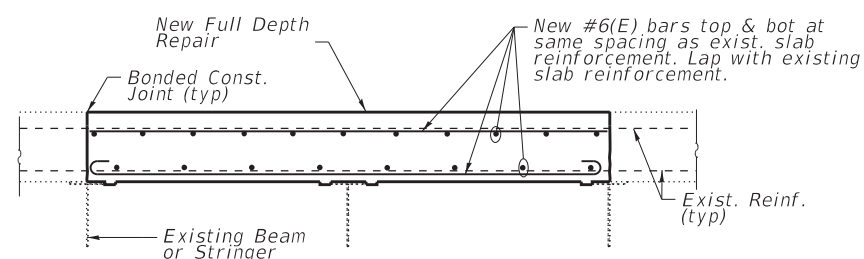
PLAN

LEGEND

- Partial Depth Repair, Sheet 10
- Full Depth Repair, Sheet 9



EXISTING CROSS SECTION AT FULL DEPTH REPAIR



FULL DEPTH REPAIR DETAIL

Note

Hatched areas indicate deteriorated concrete sections to be removed. Perimeters of Concrete Removal areas shall be saw cut 3/4" prior to the removal of the concrete. Existing transverse reinforcement shall be cleaned, straightened and incorporated into the new construction. New reinforcement bars shall be epoxy coated.

GENERAL NOTES

1. Reinforcing bars shall conform to the requirements of AASHTO M31 (ASTM A615) Grade 60 and AASHTO M284 (ASTM D3963).
2. Reinforcing bars designated (E) shall be epoxy coated. Damage to the epoxy coating during handling, placement, etc., shall be repaired according to the Special Provision "Field Coating Reinforcing Bars."
3. All accessories including bolsters, chairs, tie wire, etc., used to tie or support the epoxy-coated bars shall be epoxy coated.
4. Existing reinforcing bars shall be field-coated with epoxy, in accordance with the Special Provision "Field Coating Reinforcing Bars with Epoxy."
5. New concrete deck repair surfaces shall have a tined finish as per Article 420.09(e)(1) of the Standard Specifications. Cost included with Deck Slab Repair (Full Depth) or Deck Slab Repair (Partial).
6. At locations where the roadway will be open to traffic within two weeks or less of concrete placement due to construction staging, an accelerated admixture from the IDOT Qualified Product List of Concrete Admixtures shall be used for concrete in deck slab repairs.
7. Existing reinforcement having 10% or more of cross sectional area lost due to corrosion or damaged during concrete removal shall be replaced by new reinforcement lapped as using the minimum lap shown on this sheet.
8. All formed concrete repair dimensions are approximate.

MINIMUM BAR LAP

- #4 bar = 2'-5"
- #5 bar = 2'-9"
- #6 bar = 3'-9"
- #7 bar = 4'-10"

BILL OF MATERIAL

ITEM	UNIT	QUANTITY
Deck Slab Repair (Full Depth)	Sq. Yd	10
Deck Slab Repair (Partial)	Sq. Yd	56

FILE NAME = F:\2015\2015-2-xx-2015-2575-C - IL-93 AND IL-43 STEEL TRUSS REPAIRS (DC)\0-earings\Microstation\Harlem Ave Bridge No. 016-0323\09-Deck Repairs.dgn

USER NAME = TCS	DESIGNED - ARB	REVISED -
	CHECKED - DC	REVISED -
PLOT SCALE = 48.0000' / in.	DRAWN - TCS	REVISED -
PLOT DATE = 1/18/2019	CHECKED - DC/ARB	REVISED -

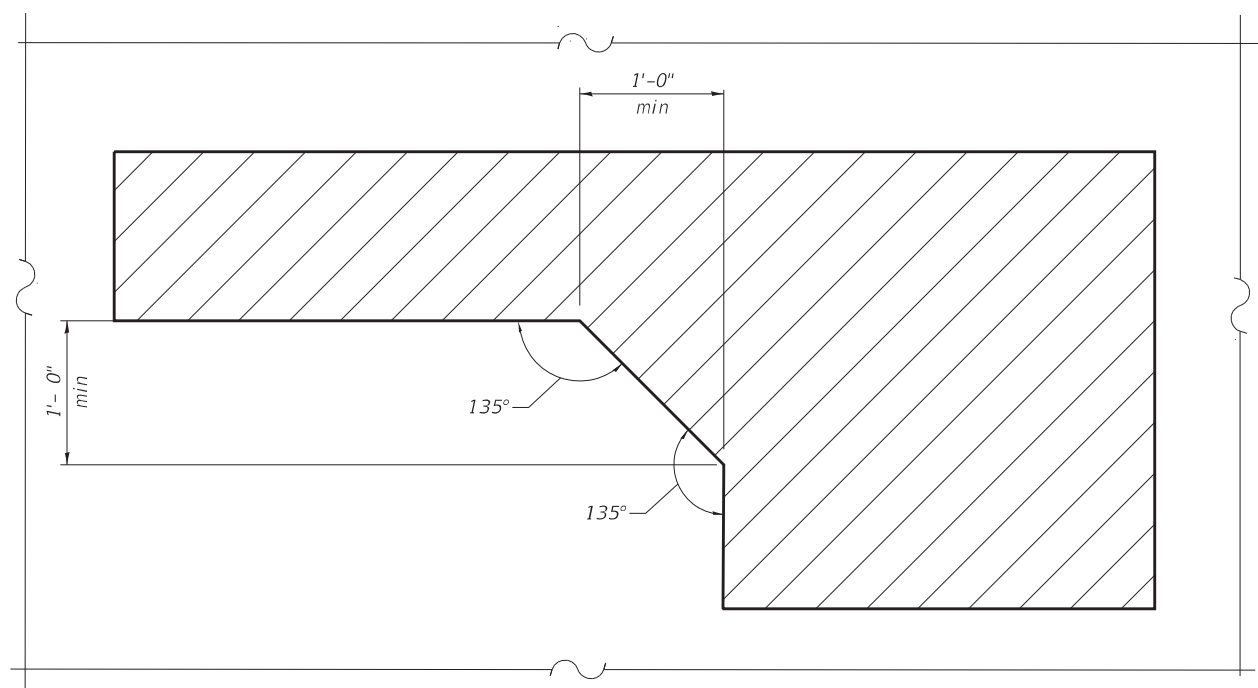
**STATE OF ILLINOIS
DEPARTMENT OF TRANSPORTATION**

**DECK REPAIRS
STRUCTURE NO. 016-0323**

SHEET NO. 9 OF 10 SHEETS

F.A.P. RTE.	SECTION	COUNTY	TOTAL SHEETS	SHEET NO.
348	2018-093-B-R	COOK	19	12
CONTRACT NO. 62H23				
ILLINOIS FED. AID PROJECT				

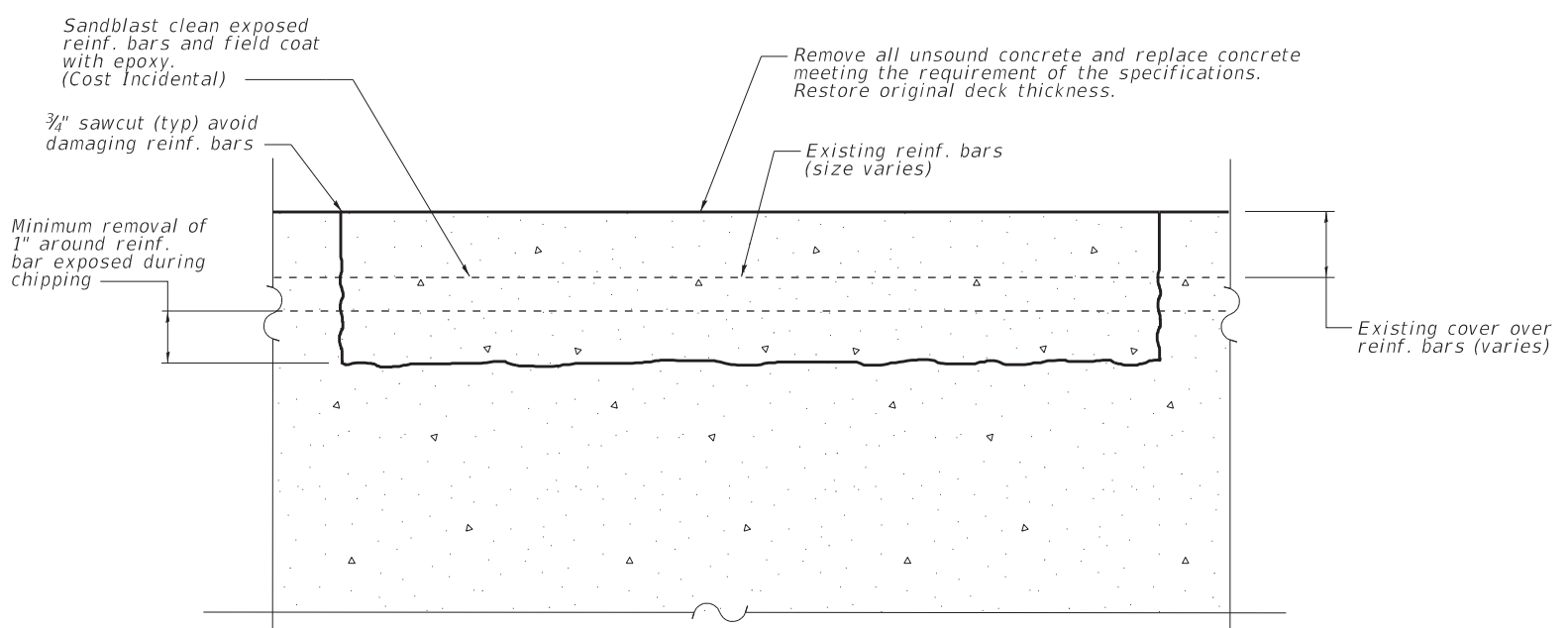
FILE NAME = F:\2015\2015.2\11-2015\2575.C - IL-83 AND IL-43 STEEL TRUSS REPAIRS (DC)\Drawings\Microstation\Herlem Ave Bridge No 016-0323\10-Per-11a) Depth Deck-9.dgn



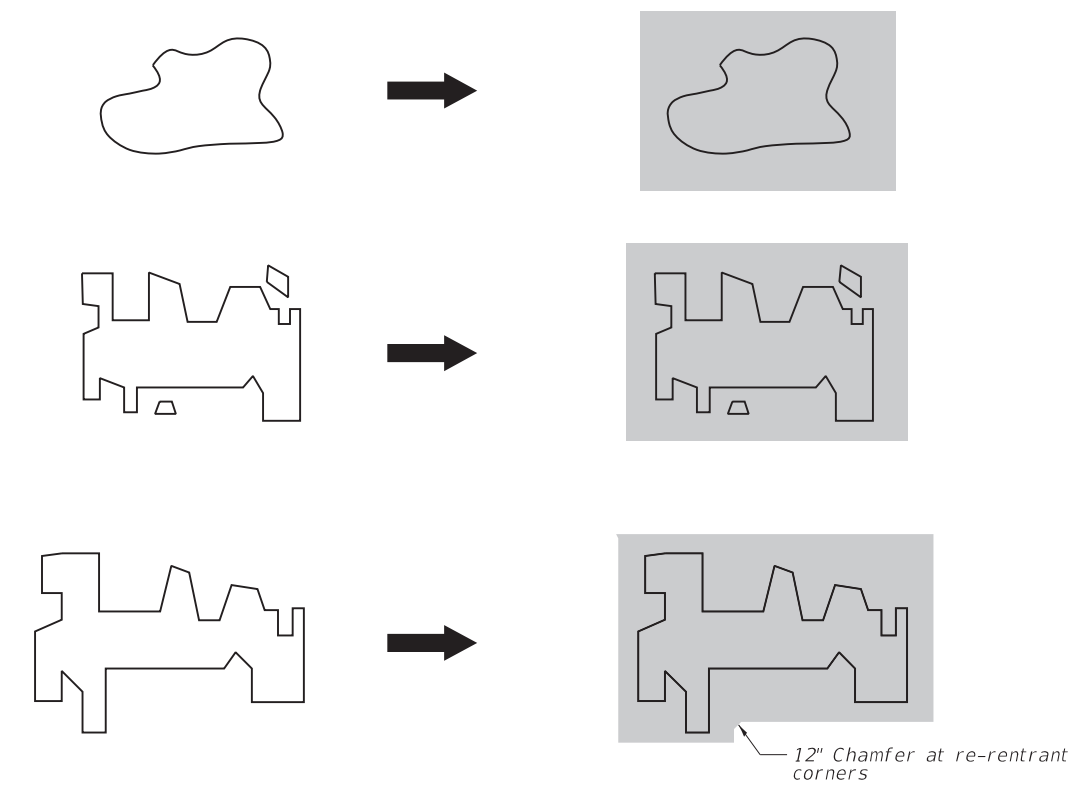
RE-ENTRANT CORNER MODIFICATIONS

CONCRETE REPAIR PROCEDURE

1. Sound concrete surfaces by chain drag and/or hammer tapping and mark areas of unsound concrete with spray paint. Notify engineer and allow at least 24 hours to verify areas of unsound concrete in general.
2. Sawcut or chip square edges of removal areas 3/4" deep unless noted otherwise. Do not cut reinforcing steel or other embedments.
3. Remove unsound concrete and, as necessary, sound concrete to create minimum gaps behind exposed reinforcing bars of 1", even if bar is only partially exposed.
4. Clean exposed concrete and steel surfaces by sandblasting, followed by compressed air.
5. Notify engineer of existing reinforcement that has less than 1" of concrete cover, has lost at least 10% of its area, or is fractured. Install supplemental reinforcement as directed by the field engineer.
6. Install epoxy-grouted dowels as directed by the engineer, cost incidental



PARTIAL DEPTH DECK REPAIR



TYPICAL CONCRETE REPAIR GEOMETRY

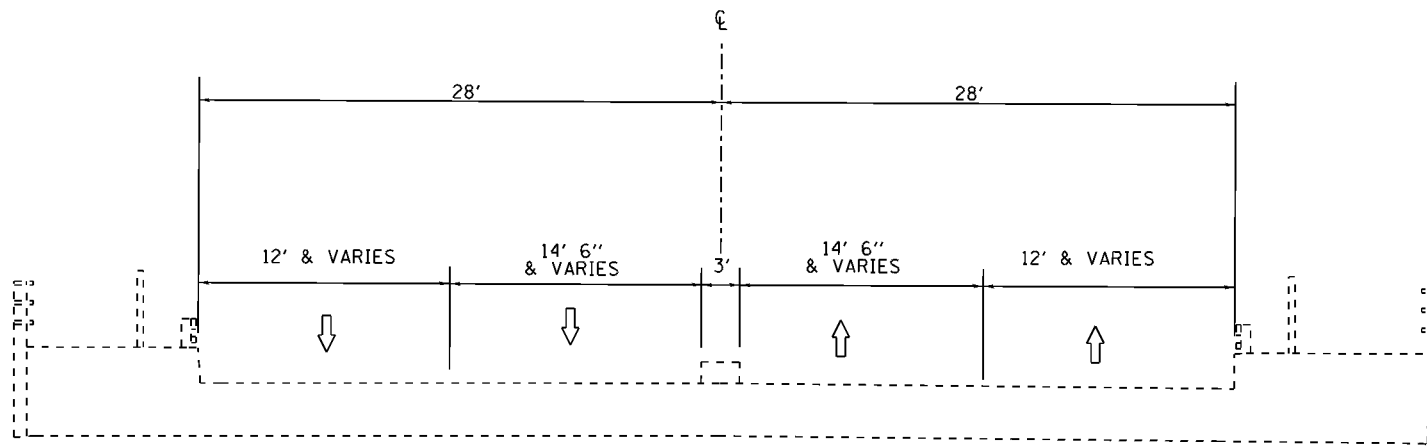
USER NAME = TCS	DESIGNED - ARB	REVISED -
	CHECKED - DC	REVISED -
PLOT SCALE = 1:4.0000 ' / in.	DRAWN - TCS	REVISED -
PLOT DATE = 1/18/2019	CHECKED - DC/ARB	REVISED -

**STATE OF ILLINOIS
DEPARTMENT OF TRANSPORTATION**

**PARTIAL DEPTH DECK REPAIR
STRUCTURE NO. 016-0323**

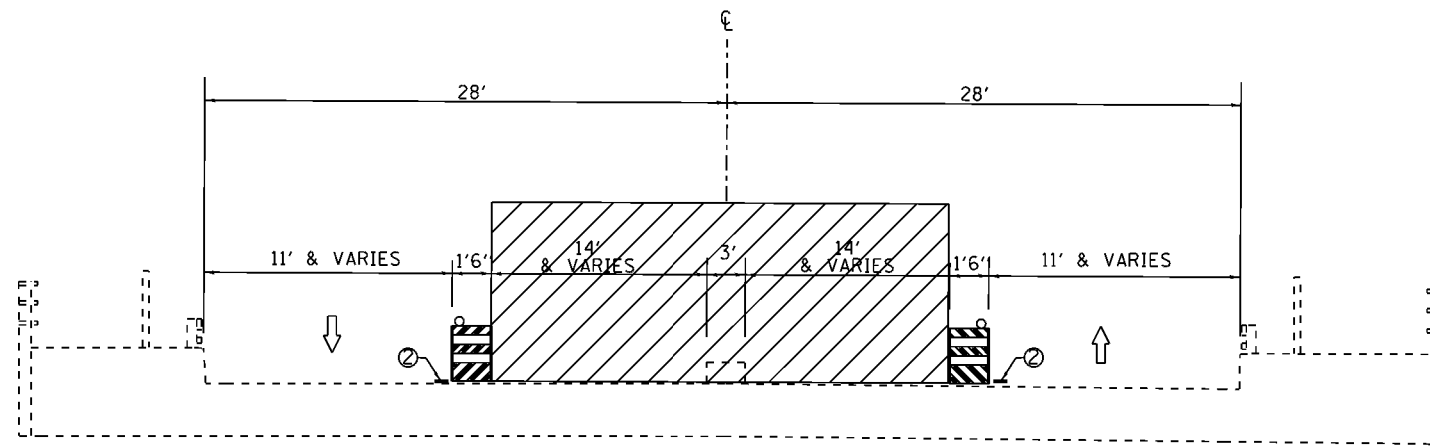
SHEET NO. 10 OF 10 SHEETS

F.A.P. RTE. 348	SECTION 2018-093-B-R	COUNTY COOK	TOTAL SHEETS 19	SHEET NO. 13
CONTRACT NO. 62H23				
ILLINOIS FED. AID PROJECT				



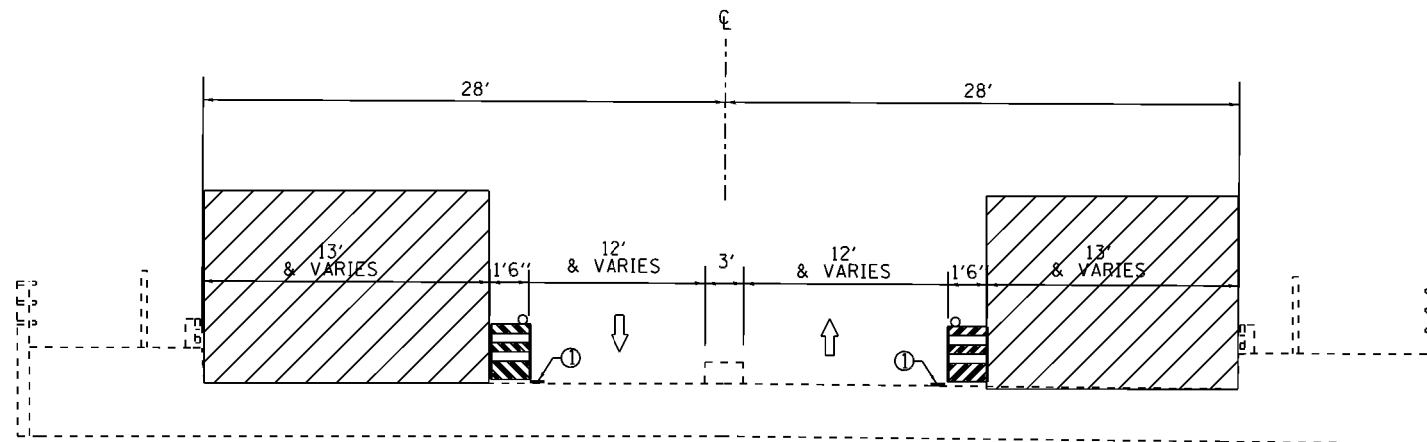
TYPICAL STRUCTURE SECTION

IL-43 (HARLEM AVE.) OVER CAL SAG CHANNEL



STAGE I CONSTRUCTION

IL-43 (HARLEM AVE.) OVER CAL SAG CHANNEL



STAGE II CONSTRUCTION

IL-43 (HARLEM AVE.) OVER CAL SAG CHANNEL

- ① PAVEMENT MARKING TAPE 4", TYPE IV (WHITE),
- ② PAVEMENT MARKING TAPE 4", TYPE IV (YELLOW)

MODEL: Default
 FILE: \\p121harcam dot illinois gov\PI\DOT\Documents\DOT - Offices\District 1\Projects\101719\CADD\Drawings\101719-shh-typical.dgn

USER NAME = hassan	DESIGNED -	REVISED -
	DRAWN -	REVISED -
PLOT SCALE = 100.0774' / in.	CHECKED -	REVISED -
PLOT DATE = 3/13/2019	DATE -	REVISED -

STATE OF ILLINOIS
DEPARTMENT OF TRANSPORTATION

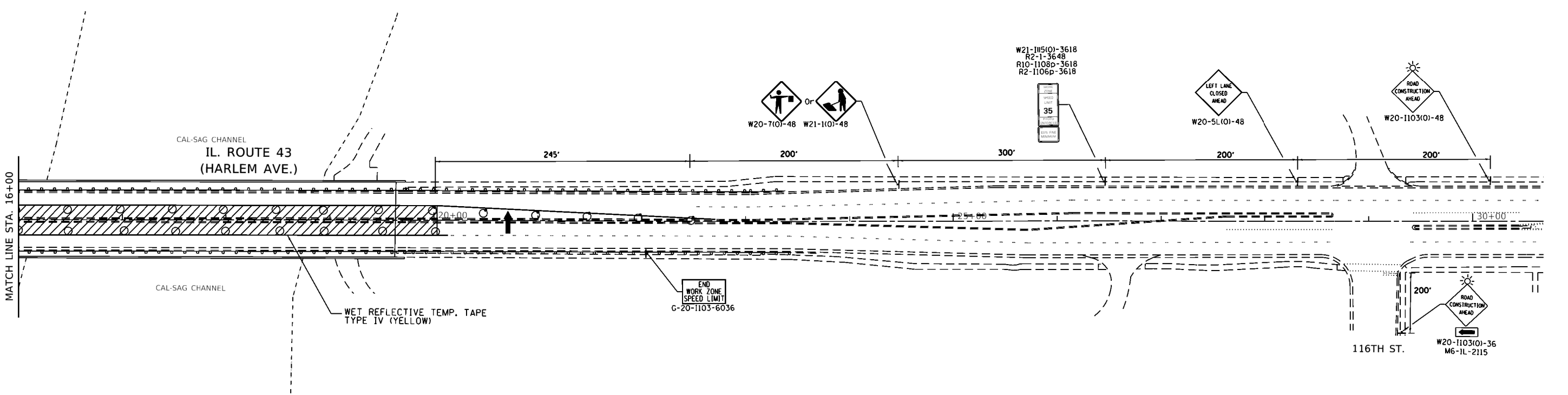
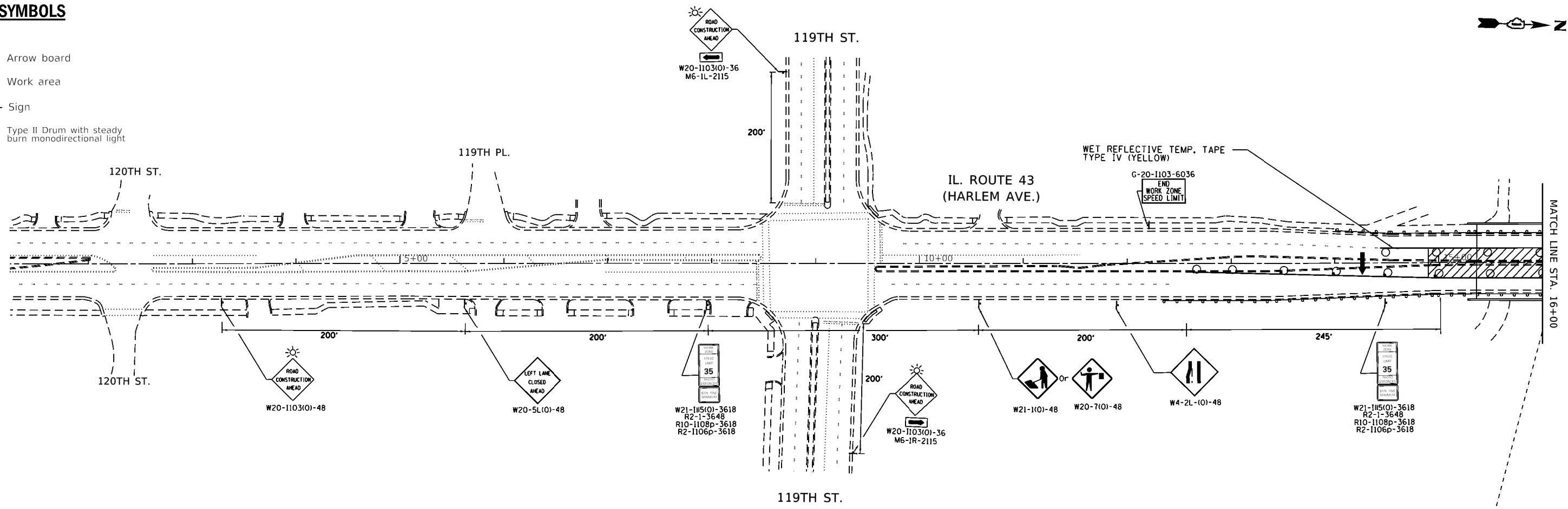
MAINTENANCE OF TRAFFIC TYPICAL CROSS SECTIONS
IL-43 (HARLEM AVE.) AT CAL SAG CHANNEL

SCALE: SHEET OF SHEETS STA. TO STA.

F.A.P. RTE.	SECTION	COUNTY	TOTAL SHEETS	SHEET NO.
348	2018-093-BR	COOK	19	14
CONTRACT NO. 62H23			ILLINOIS FED. AID PROJECT	

SYMBOLS

- ↑ Arrow board
- ▨ Work area
- P Sign
- Type II Drum with steady burn monodirectional light



MODEL: Default
 FILE: Model - 201901031001.DOCX
 PROJECT: 101719-CADD-Data-Design-101719-19-481019.dgn

USER NAME = Hassam	DESIGNED -	REVISED -
PLOT SCALE = 100.0000" / in.	DRAWN -	REVISED -
PLOT DATE = 3/13/2019	CHECKED -	REVISED -
	DATE -	REVISED -

STATE OF ILLINOIS
DEPARTMENT OF TRANSPORTATION

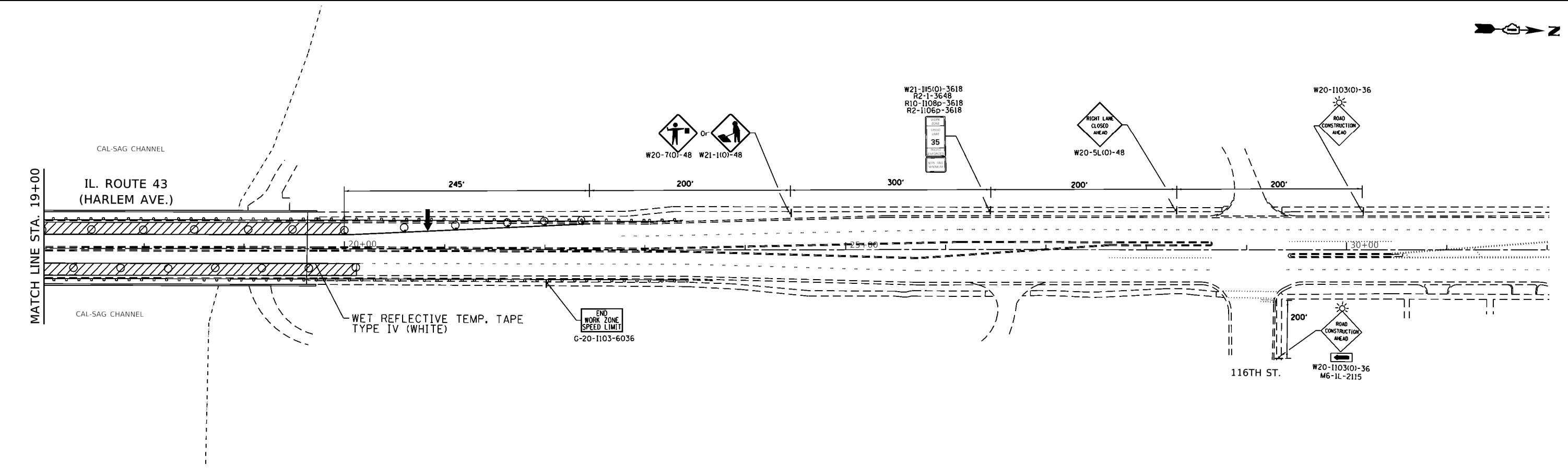
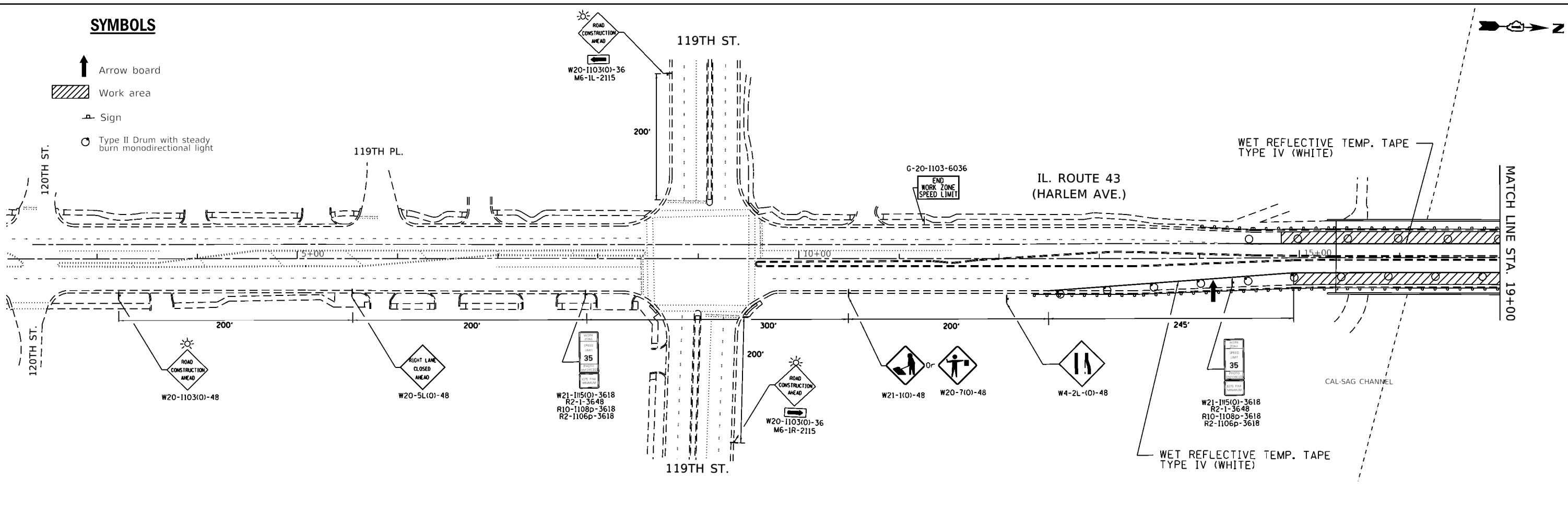
MAINTENANCE OF TRAFFIC: STAGE I
IL-43 (HARLEM AVE.) OVER CAL SAG CHANNEL

F.A.P. RTE.	SECTION	COUNTY	TOTAL SHEETS	SHEET NO.
348	2018-093-B-R	COOK	19	15
CONTRACT NO. 62H23				
ILLINOIS FED. AID PROJECT				

SCALE: SHEET OF SHEETS STA. TO STA.

SYMBOLS

- ↑ Arrow board
- ▨ Work area
- ⊠ Sign
- Type II Drum with steady burn monodirectional light



MODEL: Default
 FILE: \\mtr\p\pub\harcam\dat_illinois.gov_PWD\DOT\Documents\DOT_Offices\District_3\Projects\101719\CADD\Drawings\101719_sht_48.dwg
 3/13/2019 10:17:19 AM

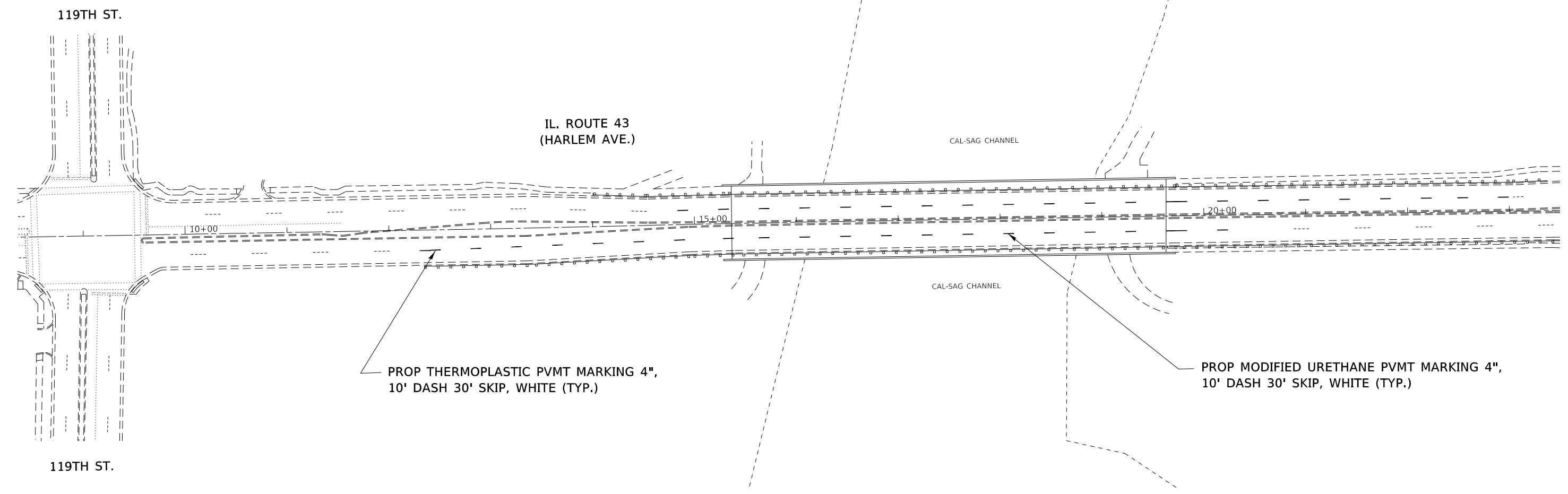
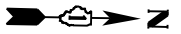
USER NAME = hassam	DESIGNED -	REVISED -
	DRAWN -	REVISED -
PLOT SCALE = 100.0000" / in.	CHECKED -	REVISED -
PLOT DATE = 3/13/2019	DATE -	REVISED -

**STATE OF ILLINOIS
DEPARTMENT OF TRANSPORTATION**

**MAINTENANCE OF TRAFFIC: STAGE II
IL-43 (HARLEM AVE.) OVER CAL SAG CHANNEL**

SCALE: SHEET OF SHEETS STA. TO STA.

F.A.P. RTE.	SECTION	COUNTY	TOTAL SHEETS	SHEET NO.
348	2018-093-B-R	COOK	19	16
CONTRACT NO. 62H23				
ILLINOIS FED. AID PROJECT				



NOTES

- 1) PAVEMENT MARKING REMOVAL WILL BE FROM:
NB STA 12+00 TO 20+50
SB STA 14+50 TO 23+00
- 2) MODIFIED URETHANE PAVEMENT MARKING SHALL
BE APPLIED TO CONCRETE SURFACE.

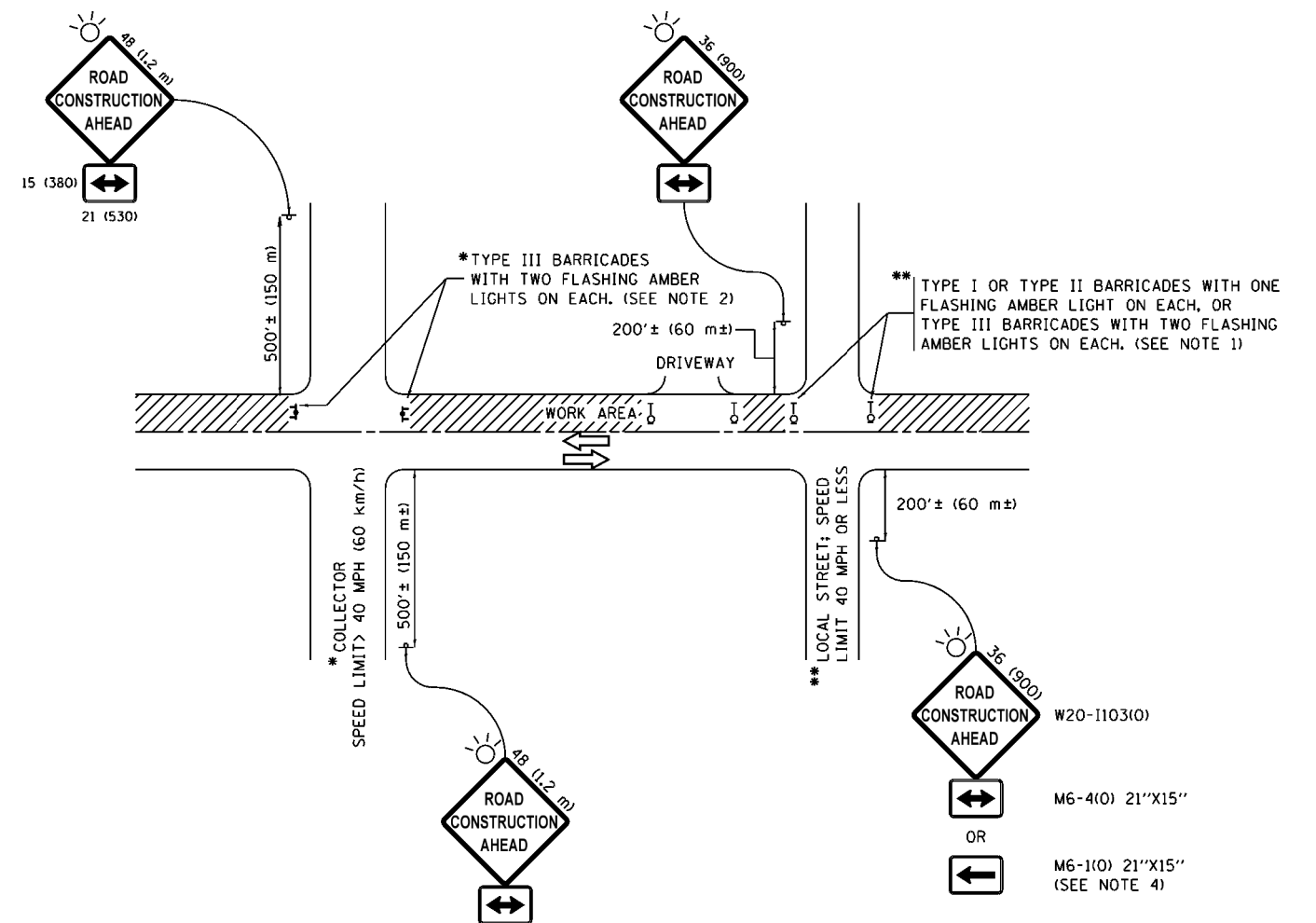
MODEL: Default
 FILE NAME: p:\u0008\B&E\BID\ITEC\Illinois\pov\PW\DOT\Documents\DOT_Offices\DI\erct_1\Projects\101719\CADD\data\Design\101719_sht-pln.dgn

USER NAME = hassann	DESIGNED -	REVISED -
	DRAWN -	REVISED -
PLOT SCALE = 100.0000' / in.	CHECKED -	REVISED -
PLOT DATE = 2/1/2019	DATE -	REVISED -

STATE OF ILLINOIS
DEPARTMENT OF TRANSPORTATION

PROPOSED PAVEMENT MARKING IL-43 (HARLEM AVE.) AT CAL SAG CHANNEL			
SCALE:	SHEET	OF	SHEETS
	STA.	TO	STA.

F.A.P. RTE.	SECTION	COUNTY	TOTAL SHEETS	SHEET NO.
348	2018-093-B-R	COOK	19	17
CONTRACT NO. 62H23			ILLINOIS FED. AID PROJECT	



NOTES:

1. SIDE ROAD WITH A SPEED LIMIT OF 40 MPH (60 km/h) OR LESS AS SHOWN ON THE DRAWING AND AS DIRECTED BY THE ENGINEER:
 - a) ONE "ROAD CONSTRUCTION AHEAD" SIGN 36 x 36 (900x900) WITH A FLASHER MOUNTED ON IT APPROXIMATELY 200' (60 m) IN ADVANCE OF THE MAIN ROUTE.
 - b) THE CLOSED PORTION OF THE MAIN ROUTE SHALL BE PROTECTED BY BLOCKING WITH TYPE I, TYPE II OR TYPE III BARRICADES, 1/3 OF THE CROSS SECTION OF THE CLOSED PORTION.
2. SIDE ROAD WITH A SPEED LIMIT GREATER THAN 40 MPH (60 km/h) AS SHOWN ON THE DRAWING AND AS DIRECTED BY THE ENGINEER:
 - a) ONE "ROAD CONSTRUCTION AHEAD" SIGN 48 x 48 (1.2 m x 1.2 m) WITH A FLASHER MOUNTED ON IT APPROXIMATELY 500' (150 m) IN ADVANCE OF THE MAIN ROUTE.
 - b) THE CLOSED PORTION OF THE MAIN ROUTE SHALL BE PROTECTED BY BLOCKING WITH TYPE III BARRICADES, 1/2 OF THE CROSS SECTION OF THE CLOSED PORTION.
3. CONES MAY BE SUBSTITUTED FOR BARRICADES OR DRUMS AT HALF THE SPACING DURING DAY OPERATIONS. CONES SHALL BE A MINIMUM OF 28 (710) IN HEIGHT.
4. WHEN THE SIDE ROAD LIES BETWEEN THE BEGINNING OF THE MAINLINE SIGNING AND THE WORK ZONE, A SINGLE HEADED ARROW (M6-1) SHALL BE USED IN LIEU OF THE DOUBLE HEADED ARROW (M6-4).
5. WHEN WORK IS BEING PERFORMED ON A SIDE ROAD OR DRIVEWAY, FOLLOW THE APPLICABLE STANDARD(S). THE DIRECTIONAL ARROW (M6-1 OR M6-4) SHALL BE COVERED OR REMOVED WHEN NO LONGER CONSISTENT WITH THE TRAFFIC CONTROL SET-UP.
6. ADVANCE WARNING SIGNS ARE TO BE OMITTED ON DRIVEWAYS UNLESS OTHERWISE SPECIFIED IN THE PLANS OR BY THE ENGINEER.
7. THE TRAFFIC CONTROL AND PROTECTION FOR SIDE ROADS, INTERSECTIONS, AND DRIVEWAYS SHALL BE INCLUDED IN THE COST OF SPECIFIED TRAFFIC CONTROL STANDARDS OR ITEMS.

All dimensions are in inches (millimeters) unless otherwise shown.

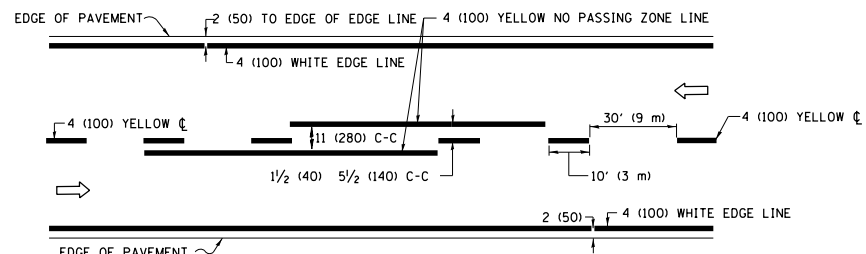
FILE NAME =	USER NAME = hassam	DESIGNED - L.H.A.	REVISED - A. HOUSEH 10-15-96
p:\IL\084EBID\INTEG\illinois.gov\FWIDOT\Documents\IDOT Offices\District 1\Projects\DI01\19740\Note\Design\DistStd.dgn			REVISED - T. RAMMACHER 01-06-00
Default	PLOT SCALE = 100.0000' / 1in.	CHECKED -	REVISED - A. SCHUETZE 07-01-13
	PLOT DATE = 3/7/2019	DATE - 06-89	REVISED - A. SCHUETZE 09-15-16

**STATE OF ILLINOIS
DEPARTMENT OF TRANSPORTATION**

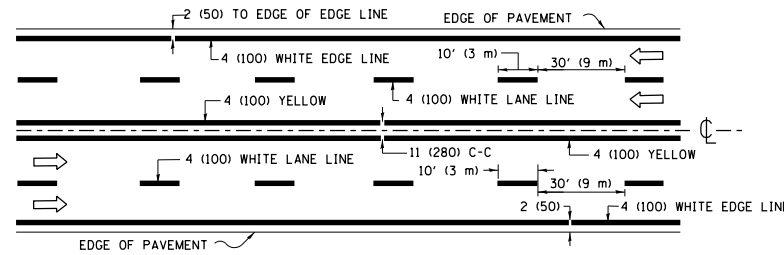
**TRAFFIC CONTROL AND PROTECTION FOR
SIDE ROADS, INTERSECTIONS, AND DRIVEWAYS**

SCALE: NONE SHEET 1 OF 1 SHEETS STA. TO STA.

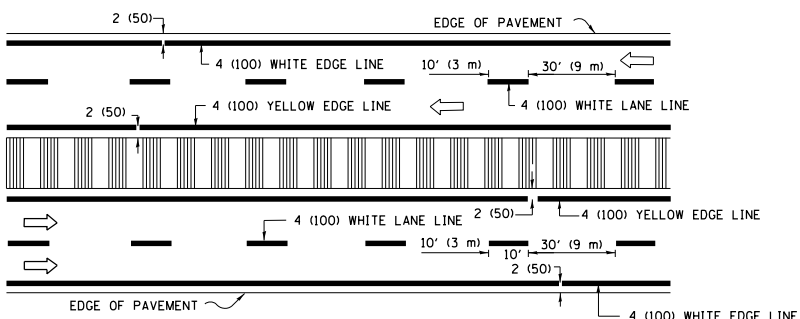
F.A.P. RTE.	SECTION	COUNTY	TOTAL SHEETS	SHEET NO.
348	2018-093-B-R	COOK	19	17A
TC-10			CONTRACT NO. 62H23	
ILLINOIS FED. AID PROJECT				



2-LANE ROADWAY

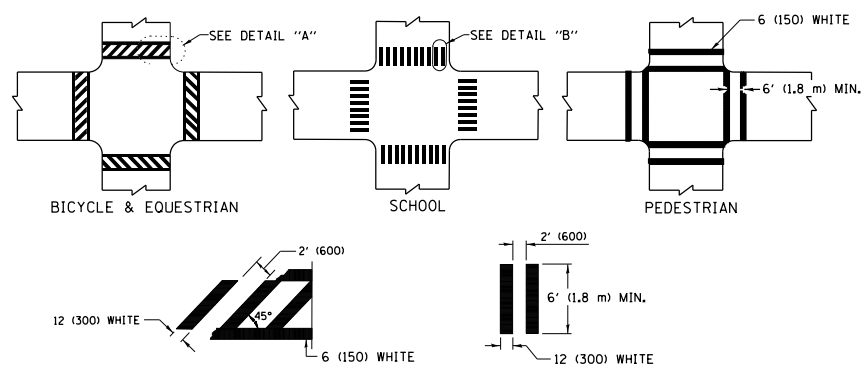


MULTI-LANE UNDIVIDED



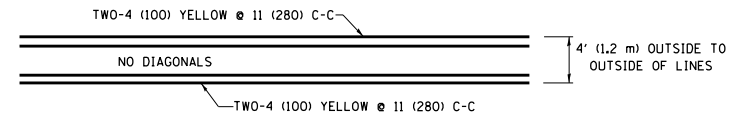
MULTI-LANE DIVIDED WITH MEDIAN

TYPICAL LANE AND EDGE LINE MARKING

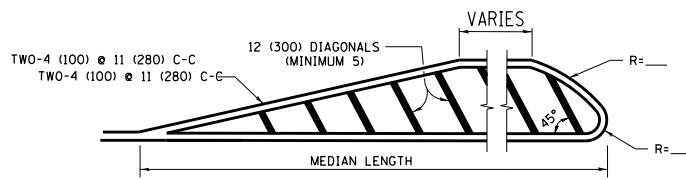


TYPICAL CROSSWALK MARKING

* MARKINGS SHALL BE INSTALLED PARALLEL TO THE CENTERLINE OF THE ROAD WHICH IT CROSSES

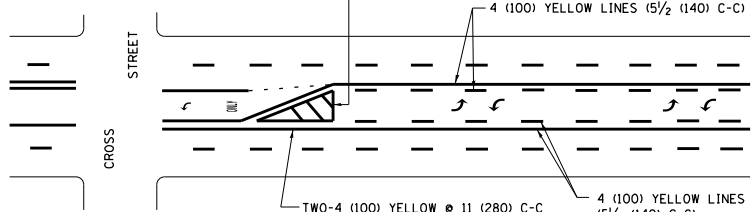


4' (1.2 m) WIDE MEDIANS ONLY



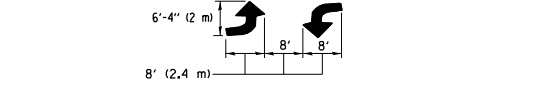
MEDIANS OVER 4' (1.2 m) WIDE

DIAGONAL LINE SPACING: 50' (15 m) C-C (LESS THAN 30MPH (50 km/h))
75' (25 m) C-C 30MPH (50 km/h) TO 45MPH (70 km/h)
150' (45 m) C-C (MORE THAN 45MPH (70 km/h))



MEDIAN WITH TWO-WAY LEFT TURN LANE TYPICAL PAINTED MEDIAN MARKING

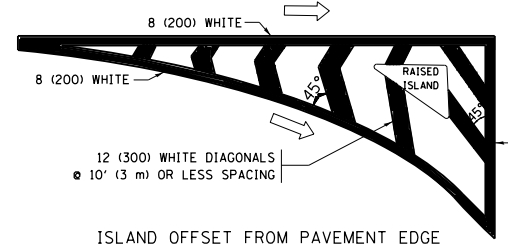
A MINIMUM OF TWO PAIRS OF TURN ARROWS SHALL BE USED, WHITE IN COLOR. ADDITIONAL PAIRS SHALL BE PLACED AT 200' (60 m) TO 300' (90 m) INTERVALS.



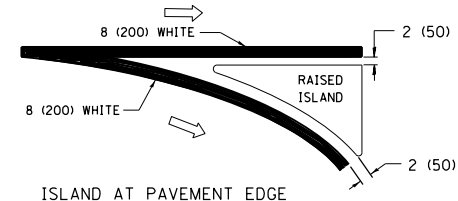
TYPICAL LEFT (OR RIGHT) TURN LANE

TYPICAL TURN LANE MARKING

FULL SIZE LETTERS 8' (2.4 m) AND ARROWS SHALL BE USED.
AREA = 15.6 SQ. FT. (1.5 m²) ONLY AREA = 20.8 SQ. FT. (1.9 m²)
* TURN LANES IN EXCESS OF 400' (120 m) IN LENGTH MAY HAVE AN ADDITIONAL SET OF ARROW - "ONLY" INSTALLED MIDWAY BETWEEN THE OTHER TWO SETS OF ARROW - "ONLY".

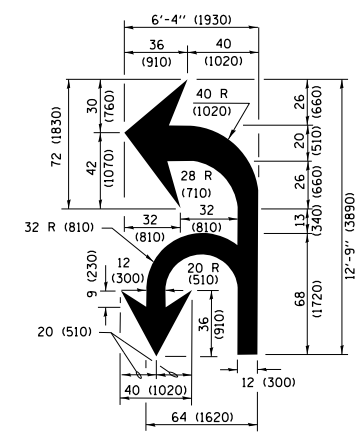


ISLAND OFFSET FROM PAVEMENT EDGE

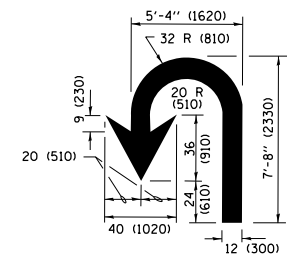


ISLAND AT PAVEMENT EDGE

TYPICAL ISLAND MARKING



COMBINATION LEFT AND U-TURN



U-TURN

LANE REDUCTION TRANSITION

* LANE REDUCTION ARROWS REQUIRED AT SPEEDS OF 45 MPH OR GREATER OR WHEN SPECIFIED IN PLANS.

D(FT)	SPEED LIMIT
345	30
425	35
500	40
580	45
665	50
750	55

TYPE OF MARKING	WIDTH OF LINE	PATTERN	COLOR	SPACING /REMARKS
CENTERLINE ON 2 LANE PAVEMENT	4 (100)	SKIP-DASH	YELLOW	10' (3 m) LINE WITH 30' (9 m) SPACE
CENTERLINE ON MULTI-LANE UNDIVIDED PAVEMENT	2 @ 4 (100)	SOLID	YELLOW	11 (280) C-C
NO PASSING ZONE LINES FOR ONE DIRECTION FOR BOTH DIRECTIONS	4 (100) 2 @ 4 (100)	SOLID SOLID	YELLOW YELLOW	5/2 (140) C-C FROM SKIP-DASH CENTERLINE 11 (280) C-C OMIT SKIP-DASH CENTERLINE BETWEEN
LANE LINES	4 (100) 5 (125) ON FREEWAYS	SKIP-DASH SKIP-DASH	WHITE WHITE	10' (3 m) LINE WITH 30' (9 m) SPACE
DOTTED LINES (EXTENSIONS OF CENTER, LANE OR TURN LANE MARKINGS)	SAME AS LINE BEING EXTENDED	SKIP-DASH	SAME AS LINE BEING EXTENDED	2' (600) LINE WITH 6' (1.8 m) SPACE
EDGE LINES	4 (100)	SOLID	YELLOW-LEFT WHITE-RIGHT	OUTLINE MEDIANS IN YELLOW
TURN LANE MARKINGS	6 (150) LINE; FULL SIZE LETTERS & SYMBOLS (8' (2.4m))	SOLID	WHITE	SEE TYPICAL TURN LANE MARKING DETAIL
TWO WAY LEFT TURN MARKING	2 @ 4 (100) EACH DIRECTION 8' (2.4m) LEFT ARROW	SKIP-DASH AND SOLID IN PAIRS	YELLOW WHITE	10' (3 m) LINE WITH 30' (9 m) SPACE FOR SKIP-DASH; 5/2 (140) C-C BETWEEN SOLID LINE AND SKIP-DASH LINE SEE TYPICAL TWO-WAY LEFT TURN MARKING DETAIL
CROSSWALK LINES (PEDESTRIAN) A. DIAGONALS (BIKE & EQUESTRIAN) B. LONGITUDINAL BARS (SCHOOL)	2 @ 6 (150) 12 (300) @ 45° 12 (300) @ 90°	SOLID SOLID SOLID	WHITE WHITE WHITE	NOT LESS THAN 6' (1.8 m) APART 2' (600) APART 2' (600) APART SEE TYPICAL CROSSWALK MARKING DETAILS.
STOP LINES	24 (600)	SOLID	WHITE	PLACE 4' (1.2 m) IN ADVANCE OF AND PARALLEL TO CROSSWALK, IF PRESENT, OTHERWISE, PLACE AT DESIRED STOPPING POINT, PARALLEL TO CROSSROAD CENTERLINE, WHERE POSSIBLE.
PAINTED MEDIANS	2 @ 4 (100) WITH 12 (300) DIAGONALS @ 45° NO DIAGONALS USED FOR 4' (1.2 m) WIDE MEDIANS	SOLID	YELLOW; TWO WAY TRAFFIC WHITE; ONE WAY TRAFFIC	11 (280) C-C FOR THE DOUBLE LINE SEE TYPICAL PAINTED MEDIAN MARKING.
GORE MARKING AND CHANNELIZING LINES	8 (200) WITH 12 (300) DIAGONALS @ 45°	SOLID	WHITE	DIAGONALS: 15' (4.5 m) C-C (LESS THAN 30MPH (50 km/h)) 20' (6 m) C-C 30MPH (50 km/h) TO 45MPH (70 km/h) 30' (9 m) C-C (OVER 45MPH (70 km/h))
RAILROAD CROSSING	24 (600) TRANSVERSE LINES; "RR" IS 6' (1.8 m) LETTERS; 16 (400) LINE FOR "X"	SOLID	WHITE	SEE STATE STANDARD 780001 AREA OF: "R"=3.6 SQ. FT. (0.33 m ²) EACH "X"=54.0 SQ. FT. (5.0 m ²)
SHOULDER DIAGONALS (REQUIRED FOR SHOULDERS ≥ 8')	12 (300) @ 45°	SOLID	WHITE - RIGHT YELLOW - LEFT	50' (15 m) C-C (LESS THAN 30MPH (50 km/h)) 75' (25 m) C-C (30 MPH (50 km/h) TO 45MPH (70 km/h)) 150' (45 m) C-C (OVER 45MPH (70 km/h))
U TURN ARROW	SEE DETAIL	SOLID	WHITE	16.3 SF
2 ARROW COMBINATION LEFT AND U TURN	SEE DETAIL	SOLID	WHITE	30.4 SF

FOR FURTHER DETAILS ON PAVEMENT MARKING REFER TO STANDARD SPECIFICATIONS FOR ROAD AND BRIDGE CONSTRUCTION AND STATE STANDARD 780001.

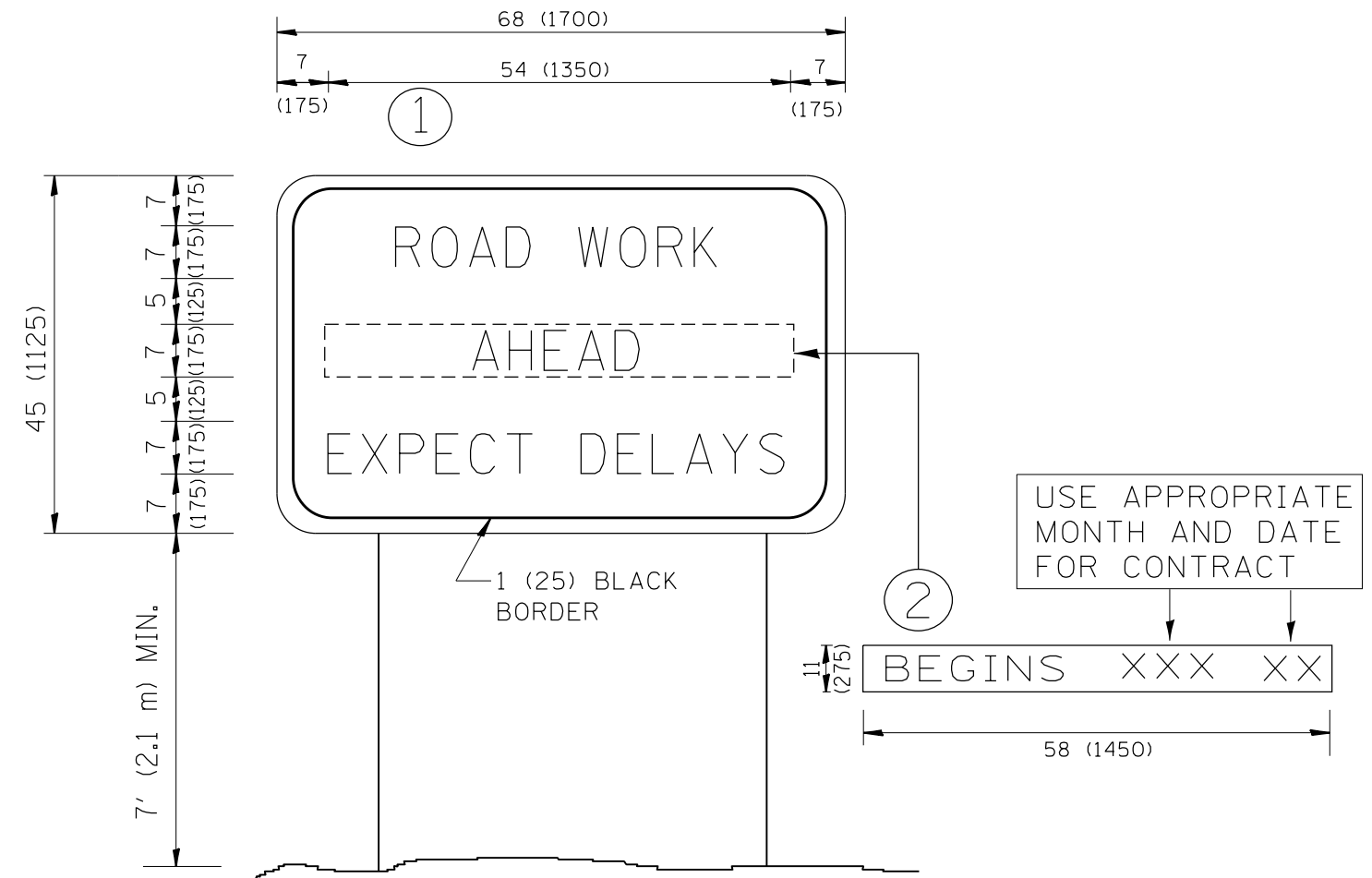
All dimensions are in inches (millimeters) unless otherwise shown.

FILE NAME =	USER NAME = hassann	DESIGNED - EVERS	REVISED - C. JUCIUS 09-09-09
pw\1\084EBIDINTEG\illinois.gov\PIWIDOT\Documents\DOT Offices\District 1\Projects\0181\BROWN\Design\DistStd.dgn		CHECKED -	REVISED - C. JUCIUS 07-01-13
Default	PLOT SCALE = 100.0000' / in.	DATE - 03-19-90	REVISED - C. JUCIUS 12-21-15
	PLOT DATE = 2/1/2019		REVISED - C. JUCIUS 04-12-16

STATE OF ILLINOIS DEPARTMENT OF TRANSPORTATION

DISTRICT ONE TYPICAL PAVEMENT MARKINGS			
SCALE: NONE	SHEET 1	OF 1 SHEETS	STA. TO STA.

F.A.P. RTE.	SECTION	COUNTY	TOTAL SHEETS	SHEET NO.
348	2018-093-B-R	COOK	19	18
TC-13			CONTRACT NO. 62H23	
ILLINOIS FED. AID PROJECT				



NOTES:

1. USE BLACK LETTERING ON ORANGE BACKGROUND.
2. ERECT SIGNS IN ADVANCE OF THE LOCATION FOR THE "ROAD CONSTRUCTION AHEAD" SIGN AT LOCATIONS AS DIRECTED BY THE ENGINEER.
3. ERECT SIGN ① WITH INSTALLED PANEL ② ONE WEEK PRIOR TO THE START OF CONSTRUCTION.
4. REMOVE PANEL ② SOON AFTER THE START OF CONSTRUCTION.
5. SEE SPECIAL PROVISION FOR "TEMPORARY INFORMATION SIGNING" FOR ADDITIONAL INFORMATION.
6. ONE SIGN ASSEMBLY EQUALS 25.70 SQ. FT. (2.3 SQ. M.)
7. SHALL BE PAID FOR AS TEMPORARY INFORMATION SIGNING.

ALL DIMENSIONS ARE IN INCHES (MILLIMETERS) UNLESS OTHERWISE SHOWN.

FILE NAME =	USER NAME = hassann	DESIGNED -	REVISED - R. MIRS 09-15-97	STATE OF ILLINOIS DEPARTMENT OF TRANSPORTATION	ARTERIAL ROAD INFORMATION SIGN	F.A.P. RTE.	SECTION	COUNTY	TOTAL SHEETS	SHEET NO.
pw:\IL\084EBIDINTEG.illinois.gov\PWIDOT\Documents\DOT Offices\District 1\Projects\DI01\BROW\Brow\Design\DistStd.dgn			REVISED - R. MIRS 12-11-97			348	2018-093-B-R	COOK	19	19
PLOT SCALE = 100.0000' / 1in.	CHECKED -	REVISED - T. RAMMACHER 02-02-99				TC-22		CONTRACT NO.		62H23
PLOT DATE = 2/1/2019	DATE -	REVISED - C. JUCIUS 01-31-07				SCALE: NONE	SHEET NO. 1 OF 1 SHEETS	STA.	TO STA.	FED. ROAD DIST. NO. 1 ILLINOIS FED. AID PROJECT