

GENERAL NOTES

Two (2) weeks prior to the placing of the Thermoplastic Pavement Marking Line, notice shall be given to Kurt Glazier at the Illinois Department of Transportation, District 2 (815/440-1833) for the moving of the No Passing Zone sign at the start of the westbound (WB) climbing lane.

Based on a structural analysis only an emptied Material Transfer Device (MTD) will be allowed over structures SN 043-0035, SN 043-1011, SN 043-1013, SN 043-1014, SN 043-1077, and SN 043-1113.

Recommended Sequence of Work:

- Step 1: Perform all the Pavement Patching.
- Step 2: Perform the Hot-Mix Asphalt Surface Removal 2 ¼”.
- Step 3: Perform the additional 2” of Hot-Mix Asphalt Surface Removal in the areas for 4 ¼” Surface Removal. △ 2

Step 4: Place 2” of Hot-mix Asphalt Replacement Over Patches in areas that were milled for 4 ¼” Surface Removal.
 Note: Any areas milled 4 ¼” must have the 2” lift of Hot-mix Asphalt Replacement Over Patches placed and compacted on the same day prior to re-opening the lane to traffic.

- Step 5: Place ¾” of Level Binder (Machine Method) on mainline.
- Step 6: Place 1 ½” of Hot-Mix Asphalt Surface Course on mainline.
- Step 7: Place 2 ¼” of Hot-Mix Asphalt Surface Course on shoulders.
- Step 8: Place the Incidental Hot-Mix Asphalt in the remaining areas.

FILE NAME = 64M39.GN.DOCX	USER NAME =	DESIGNED - Engineering Systems	REVISED -	STATE OF ILLINOIS DEPARTMENT OF TRANSPORTATION	GENERAL NOTES	ROUTE	SECTION	COUNTY	TOTAL SHEETS	SHEET NO.
	DRAWN -	REVIS	FAP 301 (US 20 / IL 84)			29 RS-8	Jo Davess	76	4	
	PLOT SCALE =	CHECKED -	REVIS			CONTRACT NO. 64M39		ILLINOIS		FED. AID PROJECT
PLOT DATE = 4/9/2019 2:17 PM	DATE - 4/9/2019 2:09 PM	REVIS	SCALE:	SHEET NO.	OF	SHEETS	STA.	TO STA.		

△ 4/10/19

SUMMARY OF QUANTITIES

CODE NUMBER	ITEM	UNIT	RURAL	ROADWAY
			TOTAL QUANTITY	80% FED 20% STATE 0005
30300106	AGGREGATE SUBGRADE IMPROVEMENT 6"	SQ YD	44	44
35101400	AGGREGATE BASE COURSE, TYPE B	TON	100	100
40600290	BITUMINOUS MATERIALS (TACK COAT)	POUND	75,937	75,937
40600295	POLYMERIZED BITUMINOUS MATERIALS (TACK COAT)	POUND	120,995	120,995
40600535	LEVELING BINDER (HAND METHOD), N70	TON	65	65
40600637	LEVELING BINDER (MACHINE METHOD), 1L-9.5FG, N70	TON	4381	4381
40600990	TEMPORARY RAMP	SQ YD	322	322
40601005	HOT-MIX ASPHALT REPLACEMENT OVER PATCHES	TON	1283	1283
40603310	HOT-MIX ASPHALT SURFACE COURSE, MIX "C", N50	TON	6,671	6,671
40603340	HOT-MIX ASPHALT SURFACE COURSE, MIX "D", N70	TON	6,571	6,571
40800050	INCIDENTAL HOT-MIX ASPHALT SURFACING	TON	427	427
44000158	HOT-MIX ASPHALT SURFACE REMOVAL, 2 1/4"	SQ YD	123,416	123,416
44000166	HOT-MIX ASPHALT SURFACE REMOVAL, 4 1/4"	SQ YD	2,860	2,860
44000500	COMBINATION CURB AND GUTTER REMOVAL	FOOT	25	25
44002217	HOT-MIX ASPHALT REMOVAL OVER PATCHES, 4 1/4"	SQ YD	1,400	1,400

* SPECIALTY ITEM

MODEL: Default
 FILE: \\nas01c.psu.edu\BEBIDN\TEC\Illinois\gov\PI\DOT\Documents\1\DOT_Offices\Illinois\Projects\64M39\CADD\03\64M39-Sub-SQ02.dgn

USER NAME = ankneyde	DESIGNED -	REVISED -
	DRAWN -	REVISED -
PLOT SCALE = 40.0000 ' / in.	CHECKED -	REVISED -
PLOT DATE = 1/18/2019	DATE -	REVISED -

**STATE OF ILLINOIS
DEPARTMENT OF TRANSPORTATION**

SCHEDULE OF QUANTITIES

SCALE: SHEET OF SHEETS STA. TO STA.

F.A.P. RTE.	SECTION	COUNTY	TOTAL SHEETS	SHEET NO.
301	29RS-8	JODAVIESS	76	5
CONTRACT NO. 64M39				

Schedule of Quantities

30300106 AGGREGATE SUBGRADE IMPROVEMENT 6"

SO YD	LOCATION
	US 20 / IL 84
43.5	As Needed & Directed by the Resident (Aggregate Under Full-Depth Patches)
<u>43.5</u>	TOTAL

2

40600290 BITUMINOUS MATERIALS (TACK COAT)

POUND	LOCATION	(See General Notes for Application Rates or HMA Schedule)
	US 20 / IL 84	
221	As Needed & Directed by the Resident (Hot-Mix Asphalt Replacement Over Patches)	
<u>221</u>	TOTAL	

40600535 LEVELING BINDER (HAND METHOD), N70

TON	LOCATION
	US 20 / IL 84
65	As Needed & Directed by the Resident
<u>65</u>	TOTAL

2

40601005 HOT-MIX ASPHALT REPLACEMENT OVER PATCHES

TON	LOCATION	(See Edge of Pavement Repair Detail)
	US 20 / IL 84	
		Full Lane Width - Only Need 2" HMA Replacement at these Locations
89.6	Sta 976 + 90 - 982 + 90	*West Outside Climbing Lane*
2.4	Sta 989 + 36 - 989 + 66	LT - 3' Wide E.O.P. Repair
224.0	Sta 1038 + 70 - 1053 + 70	*RT (EB) Lane*
11.9	As Needed & Directed by the Resident (E.O.P. Repair)	
<u>327.9</u>	TOTAL	

40600990 TEMPORARY RAMP

SO YD	LOCATION	(Taper Rate = 1' : 40', so L = 7.5')
	US 20 / IL 84	
46.7	Sta 934 + 44	Project Begins
35.0	Sta 992 + 90	Bridge
35.8	Sta 994 + 99	Bridge
24.2	Sta 995 + 73	Glen Hollow Rd
18.3	Sta 1065 + 48	Devils Ladder Rd
51.7	Sta 1131 + 80	Eagle Ridge Dr
36.7	Sta 1153 + 94	Project Ends
73.3	As Needed & Directed by the Resident	
<u>321.7</u>	TOTAL	

44000166 HOT-MIX ASPHALT SURFACE REMOVAL, 4 1/4"

2

SO YD	LOCATION	(See Edge of Pavement Repair - Detail)
	US 20 / IL 84	*Full Lane Width*
800.0	Sta 976 + 90 - 982 + 90	*West Outside Climbing Lane*
10.0	Sta 989 + 36 - 989 + 66	LT - 3' Wide E.O.P. Repair
2,000.0	Sta 1038 + 70 - 1053 + 70	*RT (EB) Lane*
50.0	As Needed & Directed by the Resident (E.O.P. Repair)	
<u>2,860.0</u>	TOTAL	

44000500 COMBINATION CURB AND GUTTER REMOVAL

FOOT	LOCATION
	US 20 / IL 84
25	Sta 1131 + 75 LT - Curb and Gutter at Eagle Ridge Dr.
<u>25</u>	TOTAL

44300200 STRIP REFLECTIVE CRACK CONTROL TREATMENT

2

FOOT	LOCATION	(See Edge of Pavement Repair - Detail and Typical)
	US 20 / IL 84	
30	Sta 989 + 36 - 989 + 66	LT - E.O.P. Repair
3,500	Sta 1092 + 50 - 1127 + 50	Centerline of EB Climbing Lanes
500	As Needed & Directed by the Resident (E.O.P. Repair)	
<u>4,030</u>	TOTAL	

48102100 AGGREGATE WEDGE SHOULDER, TYPE B

TON	LOCATION	(Figured a 1' Wedge next to HMA Shoulder)
	US 20 / IL 84	
84.3	Sta 934 + 44 - 992 + 90	LT
229.3	Sta 995 + 00 - 1153 + 94	LT
84.3	Sta 934 + 44 - 992 + 90	RT
229.3	Sta 995 + 00 - 1153 + 94	RT
<u>627.2</u>	TOTAL	

60603800 COMBINATION CONCRETE CURB AND GUTTER, TYPE B-6.12

FOOT	LOCATION	(See Highway Standard 606001)
	US 20 / IL 84	
25	Sta 1131 + 75	LT - Curb and Gutter at Eagle Ridge Dr.
<u>25</u>	TOTAL	

MODEL: Default
FILE: \\harris.com\data\illinois.gov\PIWDOT\Documents\DOT_Offices\District_2\Projects\64M39\CADD\03\CAD\Sheet\02_64M39-sh-1-schedule.dgn

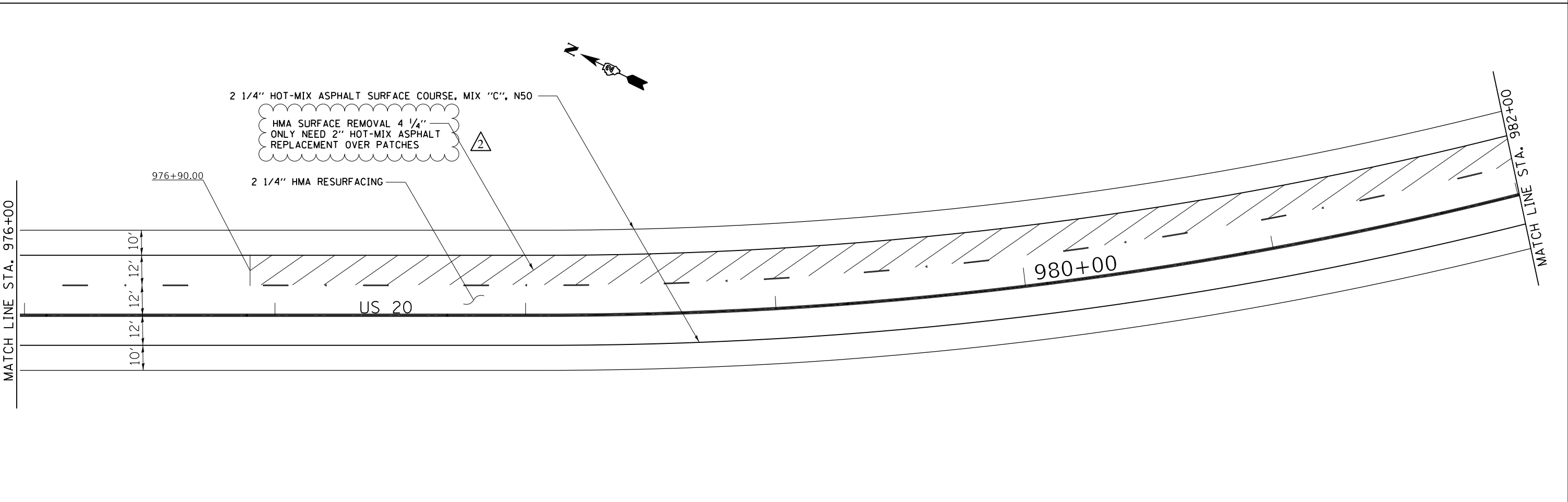
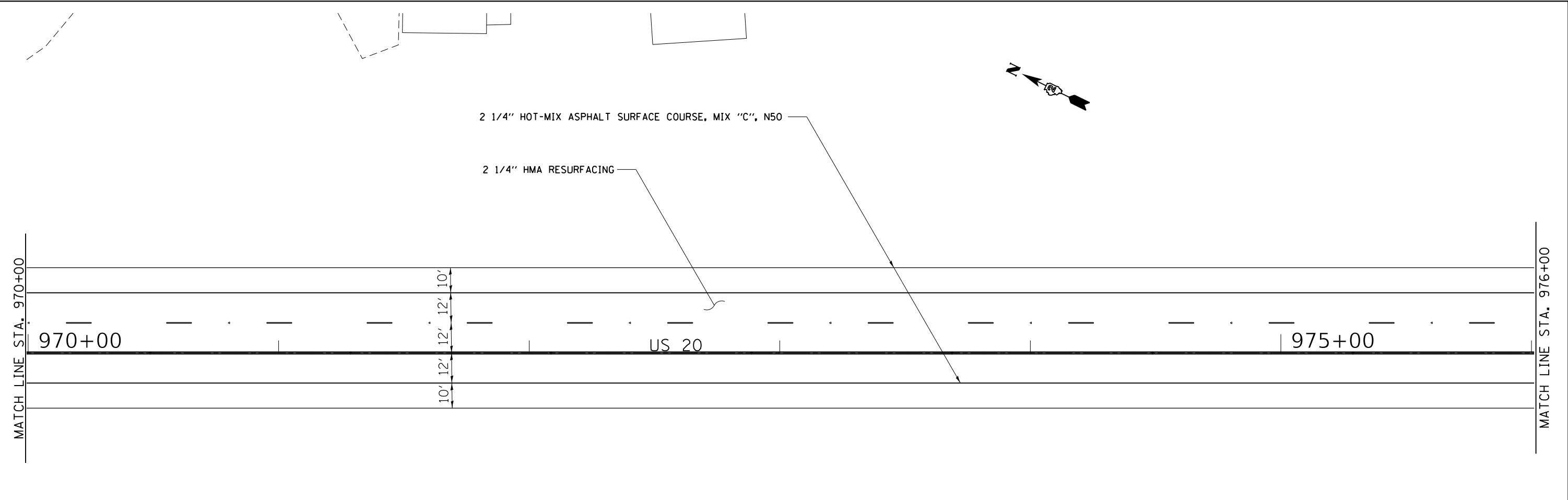
USER NAME = ankeyde	DESIGNED -	REVISED -
PLOT SCALE = 40,0000 ' / in.	DRAWN -	REVISED -
PLOT DATE = Apr-12-2019 01:04:00 PM	CHECKED -	REVISED -
	DATE -	REVISED -

STATE OF ILLINOIS
DEPARTMENT OF TRANSPORTATION

SCHEDULE OF QUANTITIES

SCALE: SHEET OF SHEETS STA. TO STA.

F.A.P. RTE.	SECTION	COUNTY	TOTAL SHEETS	SHEET NO.
301	29RS-8	JODAVIESS	76	12
			CONTRACT NO. 64M39	
		ILLINOIS	FED. AID PROJECT	



MODEL: Default
 FILE: hma19c_pavplannerom.dwg
 I:\projects\64M39\CADD\Drawings\CADD\Drawings\64M39-dht-pln.dwg

USER NAME = ankneyde	DESIGNED -	REVISED -
	DRAWN -	REVISED -
PLOT SCALE = 40,0000 ' / in.	CHECKED -	REVISED -
PLOT DATE = Apr-12-2019 01:14:01 PM	DATE -	REVISED -

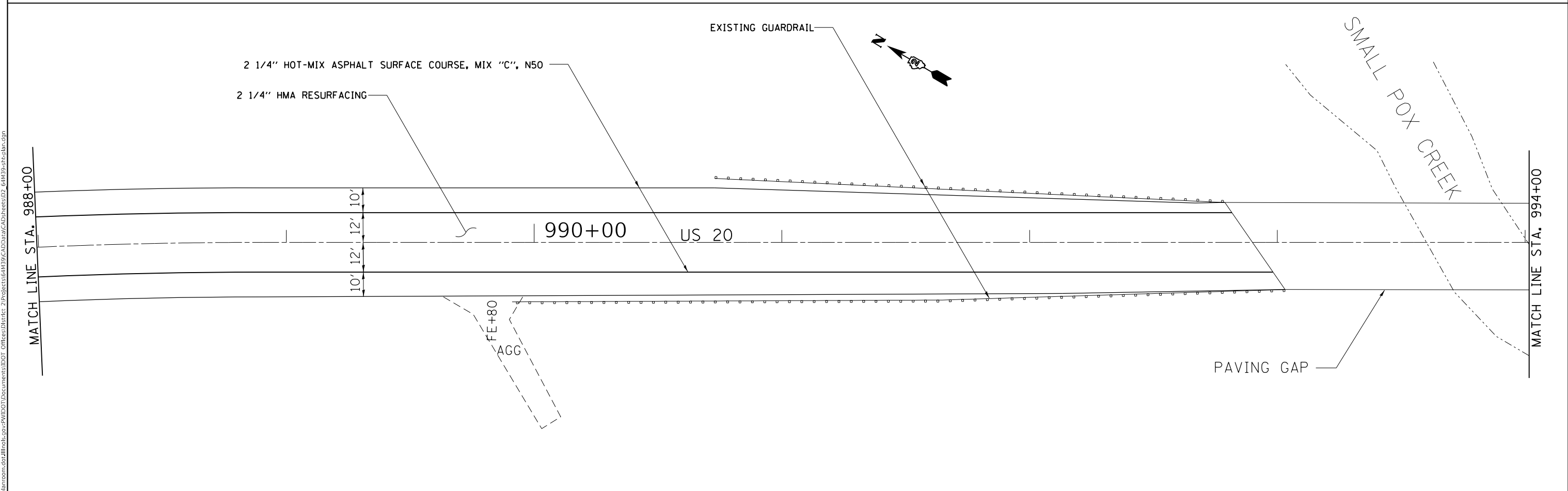
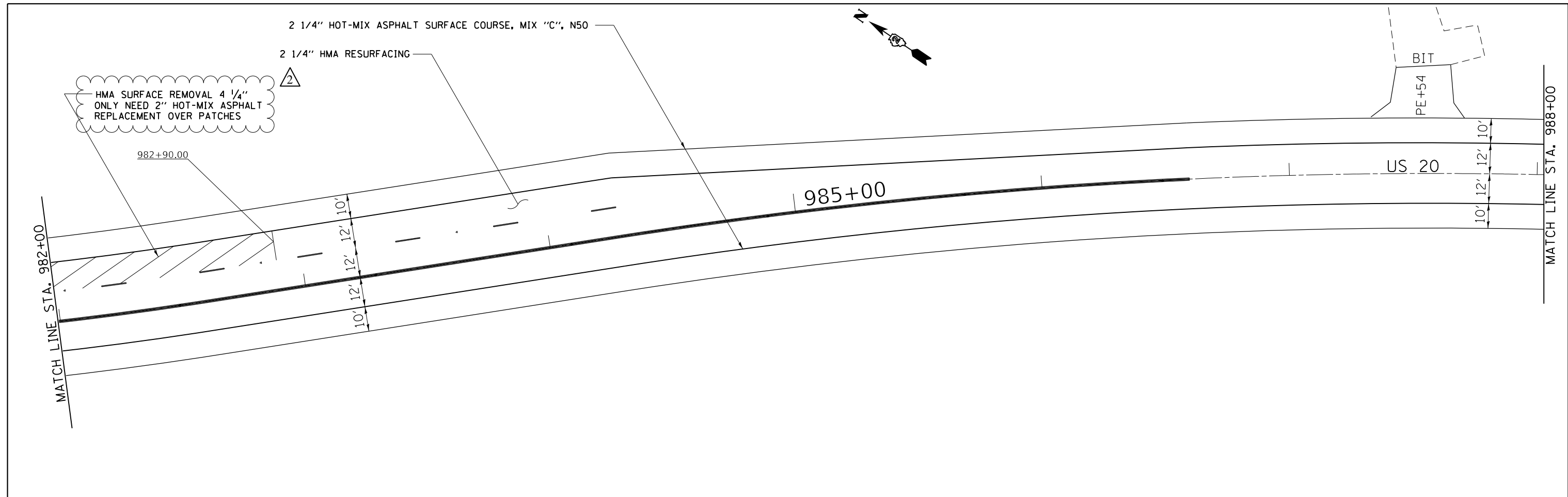
STATE OF ILLINOIS
DEPARTMENT OF TRANSPORTATION

PLAN SHEET			
US 20 / IL 84			
SCALE:	SHEET	OF SHEETS	STA. TO STA.

F.A.P. RTE.	SECTION	COUNTY	TOTAL SHEETS	SHEET NO.
301	29RS-8	JO DAVIESS	76	26
CONTRACT NO. 64M39				
ILLINOIS FED. AID PROJECT				

REV. 4/16/19

MODEL: Default
 FILE: h:\m3c\proj\pub\room\dat\illinois.gov\PI\DOT\Documents\DOT_Offices\District 2\Projects\64M39\CADD\Drawn\CAD\Drawn\64M39-dht-p1bn.dgn



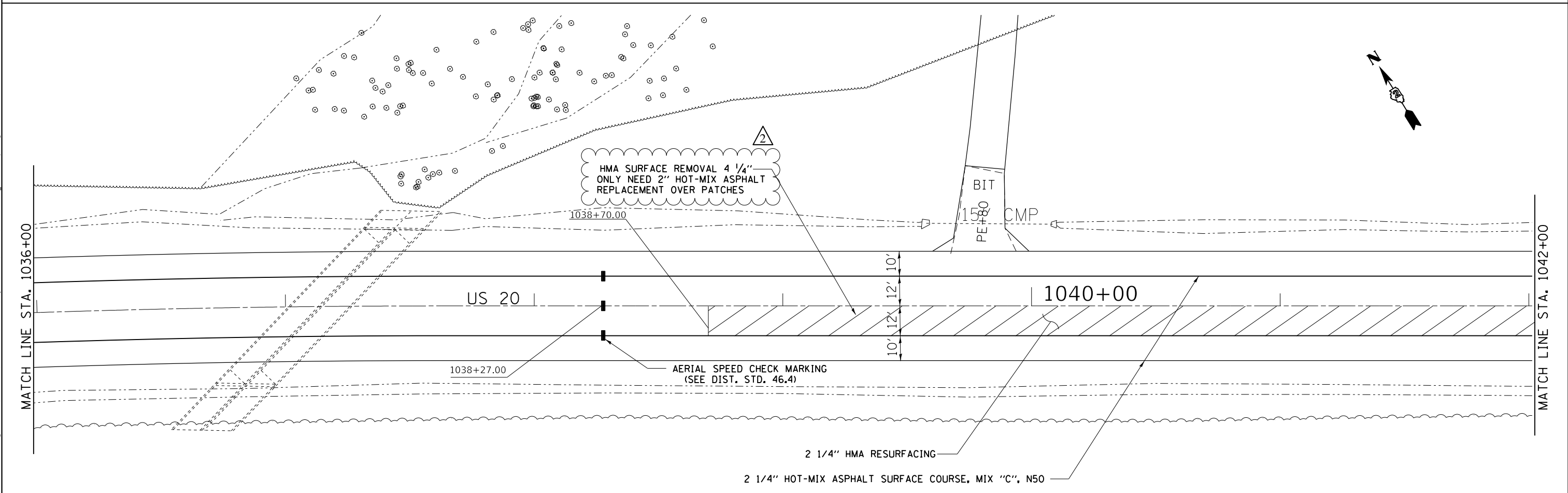
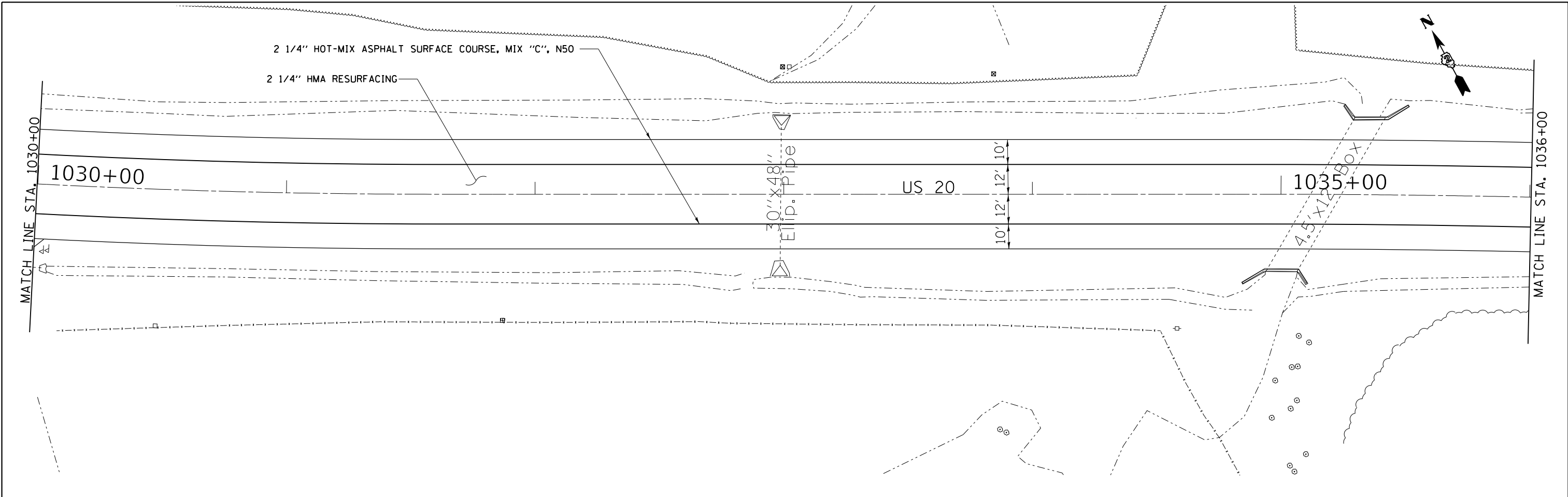
USER NAME = anikneyde	DESIGNED -	REVISED -
	DRAWN -	REVISED -
PLOT SCALE = 40,0000 ' / in.	CHECKED -	REVISED -
PLOT DATE = Apr-12-2019 01:14:02 PM	DATE -	REVISED -

**STATE OF ILLINOIS
 DEPARTMENT OF TRANSPORTATION**

**PLAN SHEET
 US 20 / IL 84**

SCALE: SHEET OF SHEETS STA. TO STA.

F.A.P. RTE.	SECTION	COUNTY	TOTAL SHEETS	SHEET NO.
301	29RS-8	JO DAVIESS	76	27
CONTRACT NO. 64M39				
ILLINOIS FED. AID PROJECT				



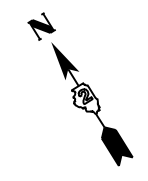
MODEL: Default
 FILE: h:\m\c\p\pub\barroom.dwg
 PROJECT: 64M39\DOT Documents\DOT Office\Drawings\2\Projects\64M39\CADD\Drawings\Sheet\02_64M39-sh-1-plan.dwg

USER NAME = ankneyde	DESIGNED -	REVISED -
	DRAWN -	REVISED -
PLOT SCALE = 40,0000 ' / in.	CHECKED -	REVISED -
PLOT DATE = Apr-12-2019 01:14:03 PM	DATE -	REVISED -

STATE OF ILLINOIS
DEPARTMENT OF TRANSPORTATION

PLAN SHEET US 20 /IL 84		F.A.P. RTE.	SECTION	COUNTY	TOTAL SHEETS	SHEET NO.
		301	29RS-8	JO DAVIESS	76	31
SCALE:		SHEET OF SHEETS		STA. TO STA.		CONTRACT NO. 64M39

ILLINOIS		FED. AID PROJECT	
----------	--	------------------	--



MATCH LINE STA. 1042+00

MATCH LINE STA. 1048+00

HMA SURFACE REMOVAL 4 1/4"
ONLY NEED 2" HOT-MIX ASPHALT
REPLACEMENT OVER PATCHES

1044+87.00

US 20

1045+00

AERIAL SPEED CHECK MARKING
(SEE DIST. STD. 46.4)

2 1/4" HOT-MIX ASPHALT SURFACE COURSE, MIX "C", N50

2 1/4" HMA RESURFACING



10'
12'
10'

MATCH LINE STA. 1048+00

MATCH LINE STA. 1054+00

HMA SURFACE REMOVAL 4 1/4"
ONLY NEED 2" HOT-MIX ASPHALT
REPLACEMENT OVER PATCHES

2 1/4" HOT-MIX ASPHALT SURFACE COURSE, MIX "C", N50

2 1/4" HMA RESURFACING



1051+47.00

1050+00 US 20

AERIAL SPEED CHECK MARKING
(SEE DIST. STD. 46.4)

10'
12'
10'

1053+70.00

MODEL: Default
FILE: hma19c_p1048planroom.dwg
PROJECT: 64M39\CADD\Drawings\DOT - Offices\Drawings\2 - Projects\64M39\CADD\Drawings\DOT - 64M39-dht-p1048.dwg

USER NAME = anikneyde	DESIGNED -	REVISED -
DRAWN -	REVISOR -	REVISION -
PLOT SCALE = 40,0000 ' / in.	CHECKED -	REVISOR -
PLOT DATE = Apr-12-2019 01:14:04 PM	DATE -	REVISION -

STATE OF ILLINOIS
DEPARTMENT OF TRANSPORTATION

PLAN SHEET
US 20 / IL 84

SCALE: SHEET OF SHEETS STA. TO STA.

F.A.P. RTE.	SECTION	COUNTY	TOTAL SHEETS	SHEET NO.
301	29RS-8	JO DAVIESS	76	32
CONTRACT NO. 64M39				
ILLINOIS FED. AID PROJECT				