

## INDEX OF SHEETS

SHEET NO.	DESCRIPTION
1	COVER SHEET
2	INDEX OF SHEETS, STATE HIGHWAY STANDARDS, GENERAL NOTES AND COMMITMENTS
3-4	SUMMARY OF QUANTITIES
5	MAINTENANCE OF TRAFFIC GENERAL NOTES
6	MAINTENANCE OF TRAFFIC TYPICAL SECTIONS
7-8	MAINTENANCE OF TRAFFIC PLANS
9	EROSION AND SEDIMENT CONTROL NOTES
10	EROSION AND SEDIMENT CONTROL PLANS
11-12	EROSION AND SEDIMENT CONTROL DETAILS
13	PAVEMENT MARKING PLAN
14-17	TS-05 DISTRICT ONE STANDARD TRAFFIC SIGNAL DESIGN DETAILS
18-19	TEMPORARY TRAFFIC SIGNAL PLANS
20	TEMPORARY CABLE PLAN STAGE I & II
21	TEMPORARY INTERCONNECT PLAN
22	TEMPORARY INTERCONNECT SCHEMATIC
23-27	STRUCTURAL DRAWINGS - SN 022-0034
28	TC-10 TRAFFIC CONTROL AND PROTECTION FOR SIDE ROADS, INTERSECTIONS, AND DRIVEWAYS
29	TC-11 TYPICAL APPLICATIONS RAISED REFLECTIVE PAVEMENT MARKERS (SNOW-PLOW RESISTANT)
30	TC-13 DISTRICT ONE TYPICAL PAVEMENT MARKINGS
31	TC-14 TRAFFIC CONTROL AND PROTECTION AT TURN BAYS (TO REMAIN OPEN TO TRAFFIC)
32	TC-16 SHORT TERM PAVEMENT MARKING LETTERS AND SYMBOLS
33	TC-22 ARTERIAL ROAD INFORMATION SIGN
34	TC-26 DRIVEWAY ENTRANCE SIGNING

## HIGHWAY STANDARDS

STANDARD NO.	DESCRIPTION
000001-07	STANDARD SYMBOLS, ABBREVIATIONS AND PATTERNS
001006	DECIMAL OF AN INCH AND OF A FOOT
280001-07	TEMPORARY EROSION CONTROL SYSTEMS
701101-05	OFF ROAD OPERATIONS, MULTILANE, 15' (4.5M) TO 24' (600 MM) FROM PAVEMENT EDGE
701311-03	LANE CLOSURE 2L, 2W MOVING OPERATIONS- DAY ONLY
701427-05	LANE CLOSURE, MULTILANE, INTERMITTENT OR MOVING OPER., FOR SPEEDS ≤ 40 MPH
701602-10	URBAN LANE CLOSURE, MULTILANE, 2W WITH BIDIRECTIONAL LEFT TURN LANE
701606-10	URBAN SINGLE LANE CLOSURE, MULTILANE, 2W WITH MOUNTABLE MEDIAN
701611-01	URBAN HALF ROAD CLOSURE, MULTILANE, 2W WITH MOUNTABLE MEDIAN
701701-10	URBAN LANE CLOSURE, MULTILANE INTERSECTION
701801-06	SIDEWALK, CORNER OR CROSSWALK CLOSURE
701901-08	TRAFFIC CONTROL DEVICES
704001-08	TEMPORARY CONCRETE BARRIER
780001-05	TYPICAL PAVEMENT MARKINGS
781001-04	TYPICAL APPLICATIONS RAISED REFLECTIVE PAVEMENT MARKERS
782006	GUARDRAIL AND BARRIER WALL REFLECTORS MOUNTING DETAILS
857001-01	STANDARD PHASE DESIGNATION DIAGRAMS AND PHASE SEQUENCES
862001-01	UNINTERRUPTABLE POWER SUPPLY (UPS)
880001-01	SPAN WIRE MOUNTED SIGNALS AND FLASHING BEACON INSTALLATION

## COMMITMENTS

NONE

## GENERAL NOTES

- BEFORE STARTING ANY EXCAVATION, THE CONTRACTOR SHALL CALL "J.U.L.I.E." AT (800) 892-0123 OR 811 FOR FIELD LOCATIONS OF BURIED ELECTRIC, TELEPHONE, AND GAS UTILITIES. 48 HOUR NOTIFICATION IS REQUIRED.
- THE EXACT LOCATION OF ALL UTILITIES SHALL BE FIELD VERIFIED BY THE CONTRACTOR BEFORE ORDERING ANY MATERIALS AND STARTING ANY WORK. FOR LOCATIONS OF UTILITIES, LOCALLY OWNED EQUIPMENT, LEASED ENFORCEMENT CAMERA SYSTEM FACILITIES AND IDOT UNDERGROUND FACILITIES, CONTACT THE LOCAL COUNTIES, MUNICIPALITIES AND IDOT FOR LOCATES.
- MEADE ELECTRIC COMPANY, THE IDOT DISTRICT ONE ELECTRICAL MAINTENANCE CONTRACTOR, LOCATES IDOT ELECTRICAL EQUIPMENT AND UNDERGROUND CABLES. CALL 773-287-7672 FOR THE INITIAL LOCATE. REQUEST FOR LOCATES OF PREVIOUSLY MARKED FACILITIES MAY BE AT THE CONTRACTOR'S EXPENSE.
- IN ADDITION TO FIELD REVIEW AND AERIAL DATA, PLAN DIMENSIONS AND DETAILS RELATIVE TO THE EXISTING FACILITIES HAVE BEEN TAKEN FROM EXISTING PLANS AND ARE SUBJECT TO CONSTRUCTION VARIATIONS. PLAN DIMENSIONS AND DETAILS RELATIVE TO EXISTING PLANS ARE SUBJECT TO ROUTINE VARIATIONS. IT SHALL BE THE CONTRACTOR'S RESPONSIBILITY TO VERIFY EXISTING DIMENSIONS AND DETAILS AFFECTING NEW CONSTRUCTION AND MAKE NECESSARY APPROVED ADJUSTMENTS PRIOR TO CONSTRUCTION OR ORDERING MATERIALS. SUCH VARIATIONS SHALL NOT BE CAUSE FOR ADDITIONAL COMPENSATION FOR A CHANGE IN THE SCOPE OF WORK. HOWEVER, THE CONTRACTOR WILL BE PAID FOR THE QUANTITY ACTUALLY FURNISHED AT THE BID PRICE FOR THE WORK.
- THE CONTRACTOR SHALL COORDINATE CONSTRUCTION ACTIVITIES WITH UTILITY COMPANIES, USGS, THE VILLAGE OF LISLE, OTHER LOCAL GOVERNMENT AGENCIES, AND IDOT.
- THE CONTRACTOR WILL NOT BE ALLOWED TO SET UP A YARD OR FIELD OFFICE ON STATE PROPERTY WITHOUT WRITTEN PERMISSION FROM THE DEPARTMENT.
- IT SHALL BE THE CONTRACTOR'S RESPONSIBILITY TO VERIFY ALL DIMENSIONS AND CONDITIONS EXISTING IN THE FIELD PRIOR TO BEGINNING CONSTRUCTION AND ORDERING MATERIALS.
- DO NOT SCALE PLANS FOR CONSTRUCTION DIMENSIONS.
- THE CONTRACTOR SHALL BE REQUIRED TO PROVIDE ACCESS TO ABUTTING PROPERTY AT ALL TIMES DURING THE CONSTRUCTION OF THIS PROJECT.
- THE CONTRACTOR SHALL TAKE ALL NECESSARY PRECAUTIONS FOR THE PROTECTION OF EXISTING PLANT MATERIAL FOR WHICH THE CONTRACT DOES NOT PROVIDE REMOVAL. THE PROTECTION OF EXISTING PLANT MATERIAL AND THE REPAIR OR REPLACEMENT OF EXISTING PLANT MATERIAL DAMAGED BY THE CONTRACTOR SHALL BE DONE IN ACCORDANCE WITH THE REQUIREMENTS OF SECTION 201 OF THE STANDARD SPECIFICATIONS.
- THE DEPARTMENT HAS NOT OBTAINED ANY PERMITS FOR OFFSITE BORROW, WASTE, USE (BWU) AREAS. PRIOR TO WORKING IN BWU AREAS, IF THE CONTRACTOR CHOOSES TO USE ACTIVITIES REQUIRING PERMITS IT IS THE CONTRACTOR'S RESPONSIBILITY TO SECURE THE PROPER PERMITS. IN ADDITION TO THE BORROW REVIEW (BDE 2289) AND USE/WASTE REVIEW (BDE 2290) SUBMITTALS, THE CONTRACTOR SHALL SUBMIT AN EROSION AND SEDIMENT CONTROL (ESC) PLAN FOR EVERY BWU SITE TO THE DEPARTMENT FOR ACCEPTANCE. GUIDELINES FOR ACCEPTABLE BWU PRACTICES CAN BE FOUND IN SECTION II.G.1. THE COST OF ALL MATERIALS AND LABOR NECESSARY TO COMPLY WITH THE ABOVE PROVISIONS TO PREPARE AND IMPLEMENT ESC PLANS WILL NOT BE PAID FOR SEPARATELY, BUT SHALL BE CONSIDERED AS INCLUDED IN THE CONTRACT UNIT PRICES AND NO ADDITIONAL COMPENSATION WILL BE ALLOWED.
- PRIOR TO BEGINNING ANY WORK, THE CONTRACTOR SHALL RECORD AND RETAIN FOR FUTURE REFERENCE, ALL EXISTING PAVEMENT MARKINGS (AND RAISED REFLECTIVE PAVEMENT MARKERS) IN ORDER THAT THE MARKINGS CAN BE RE-ESTABLISHED. EXACT LOCATIONS OF ALL PAVEMENT MARKINGS SHALL BE AS DIRECTED BY THE ENGINEER.
- THE CONTRACTOR SHALL CONTACT THE DISTRICT ONE TRAFFIC CONTROL SUPERVISOR AT (847)-705-4470 A MINIMUM OF 72 HOURS IN ADVANCE OF BEGINNING WORK.
- THE RESIDENT ENGINEER SHALL CONTACT MR. DON CHIARUGI, ARTERIAL TRAFFIC FIELD ENGINEER, AT DON.CHIARUGI@ILLINOIS.GOV A MINIMUM OF TWO (2) WEEKS PRIOR TO THE PLACEMENT OF PERMANENT PAVEMENT MARKINGS.
- THE DEPARTMENT HAS DETERMINED THAT IN STREAM WORK IS NOT REQUIRED FOR THE WORK SPECIFIED IN THIS CONTRACT. THE DEPARTMENT HAS NOT OBTAINED A USACE PERMIT. IF THE CONTRACTOR CHOOSES TO USE ACTIVITIES REQUIRING AN USACE PERMIT, IT IS THE CONTRACTOR'S RESPONSIBILITY TO SECURE THE PROPER USACE PERMITS. THE COST OF ALL MATERIALS AND LABOR NECESSARY TO SECURE AND COMPLY WITH A USACE PERMIT FOR CONTRACTOR'S ACTIVITIES WILL NOT BE PAID FOR SEPARATELY, BUT SHALL BE CONSIDERED AS INCLUDED IN THE UNIT BID PRICES OF THE CONTRACT AND NO ADDITIONAL COMPENSATION WILL BE ALLOWED.
- THESE PLANS HAVE BEEN PREPARED FROM NOTES RECEIVED FROM I.D.O.T. FIELD MAINTENANCE ENGINEERS.
- THE CONTRACTOR SHALL USE CARE IN REMOVING OR EXCAVATING NEAR ALL EXISTING ITEMS WHICH WILL REMAIN. ANY DAMAGE DONE TO EXISTING ITEMS BY THE CONTRACTOR SHALL BE REPAIRED AT THE CONTRACTOR'S EXPENSE.
- SAW CUTTING PRIOR TO ANY REMOVAL ITEMS NOTED ON THE PLANS OR DIRECTED BY THE ENGINEER SHALL BE CONSIDERED INCLUDED IN THE COST OF THE ITEMS BEING REMOVED.
- ANY SIGNAGE, PAVEMENT MARKINGS AND REFLECTORS DAMAGED DURING CONSTRUCTION OUTSIDE THE REMOVAL LINES SHOWN ON THE PLANS SHALL BE REPLACED AT THE CONTRACTOR'S EXPENSE.
- FOR WORK OUTSIDE THE LIMITS OF BRIDGE APPROACH PAVEMENT, ALL REFERENCES IN THE HIGHWAY STANDARDS AND STANDARD SPECIFICATIONS FOR REINFORCEMENT, DOWEL BARS AND TIE BARS IN PAVEMENT SHALL BE EPOXY COATED UNLESS NOTED ON THE PLANS.
- DOUBLE LANE MARKERS ARE TO BE USED AS SHOWN ON THE DISTRICT ONE DETAIL "TYPICAL APPLICATIONS-RAISED REFLECTIVE PAVEMENT MARKERS (SNOW-PLOW RESISTENT)" SHOWN IN PLANS.
- THE CENTERLINE IS FOR INFORMATION ONLY.
- THE CONTRACTOR SHALL CONTACT STEVEN WEINSTOCK OF PACE AT (847) 228-2339 OR STEVEN.WEINSTOCK@PACEBUS.COM PRIOR TO THE START OF CONSTRUCTION TO COORDINATE MAINTENANCE OF TRAFFIC WITH PACE FACILITIES.



23. THE CONTRACTOR SHALL CONTACT STEVEN WEINSTOCK OF PACE AT (847) 228-2339 OR STEVEN.WEINSTOCK@PACEBUS.COM PRIOR TO THE START OF CONSTRUCTION TO COORDINATE MAINTENANCE OF TRAFFIC WITH PACE FACILITIES.

FILE NAME = D:\Engineering\LiveProjects\13843.IDOT DUR AES\Work D-dwr 11\CADD\CADD Sheets\Civil\0162051-shr-Notes.dgn



USER NAME = lchrzasc	DESIGNED - LRC	REVISED - 04/11/2019 LRC
	DRAWN - JN	REVISED -
PLOT SCALE = 2.0000' / in.	CHECKED - LRC	REVISED -
PLOT DATE = 4/11/2019	DATE - 12/07/2018	REVISED -

STATE OF ILLINOIS  
DEPARTMENT OF TRANSPORTATION

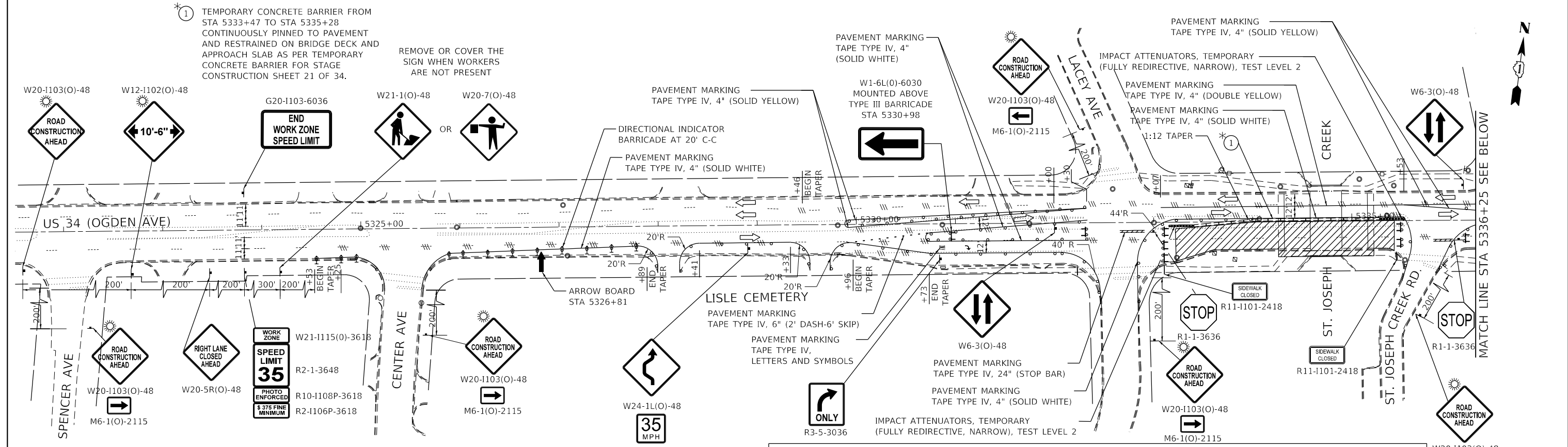
INDEX OF SHEETS, STATE HIGHWAY STANDARDS  
GENERAL NOTES AND COMMITMENTS  
US 34 (OGDEN AVENUE) AT ST. JOSEPH CREEK

SCALE: SHEET OF SHEETS STA. TO STA.

F.A.P. RTE.	SECTION	COUNTY	TOTAL SHEETS	SHEET NO.
311	10Y-BJR	DUPAGE	34	2
CONTRACT NO.				62G51
ILLINOIS FED. AID PROJECT				

① TEMPORARY CONCRETE BARRIER FROM STA 5333+47 TO STA 5335+28 CONTINUOUSLY PINNED TO PAVEMENT AND RESTRAINED ON BRIDGE DECK AND APPROACH SLAB AS PER TEMPORARY CONCRETE BARRIER FOR STAGE CONSTRUCTION SHEET 21 OF 34.

REMOVE OR COVER THE SIGN WHEN WORKERS ARE NOT PRESENT

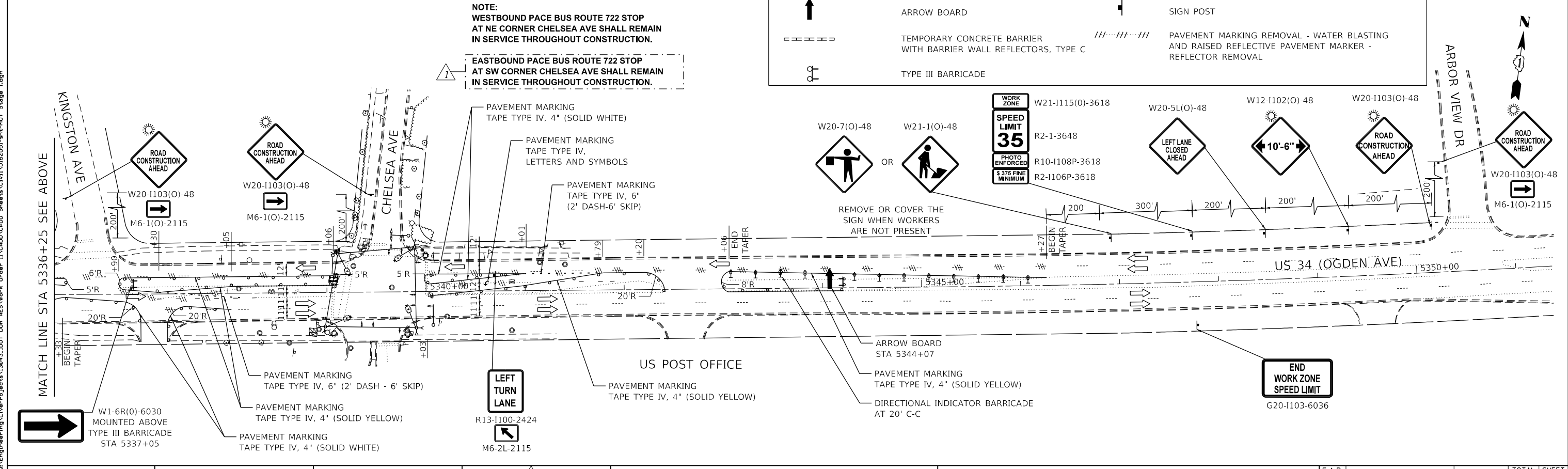


### TRAFFIC CONTROL AND STAGING LEGEND

	WORK ZONE		DRUMS OR TYPE II BARRICADES AT 50' C-C IN TANGENTS, 20' C-C IN TAPERS, 10' C-C IN RADII
	ARROW BOARD		SIGN POST
	TEMPORARY CONCRETE BARRIER WITH BARRIER WALL REFLECTORS, TYPE C		PAVEMENT MARKING REMOVAL - WATER BLASTING AND RAISED REFLECTIVE PAVEMENT MARKER - REFLECTOR REMOVAL
	TYPE III BARRICADE		

**NOTE:**  
WESTBOUND PACE BUS ROUTE 722 STOP AT NE CORNER CHELSEA AVE SHALL REMAIN IN SERVICE THROUGHOUT CONSTRUCTION.

**NOTE:**  
EASTBOUND PACE BUS ROUTE 722 STOP AT SW CORNER CHELSEA AVE SHALL REMAIN IN SERVICE THROUGHOUT CONSTRUCTION.



USER NAME = lchrzsc	DESIGNED - AB	REVISED - 04/11/2019 LRC	
PLOT SCALE = 100.0000' / 1" =	DRAWN - AB	REVISED -	
PLOT DATE = 4/11/2019	CHECKED - TGM	REVISED -	
	DATE - 12/07/2018	REVISED -	

**STATE OF ILLINOIS  
DEPARTMENT OF TRANSPORTATION**

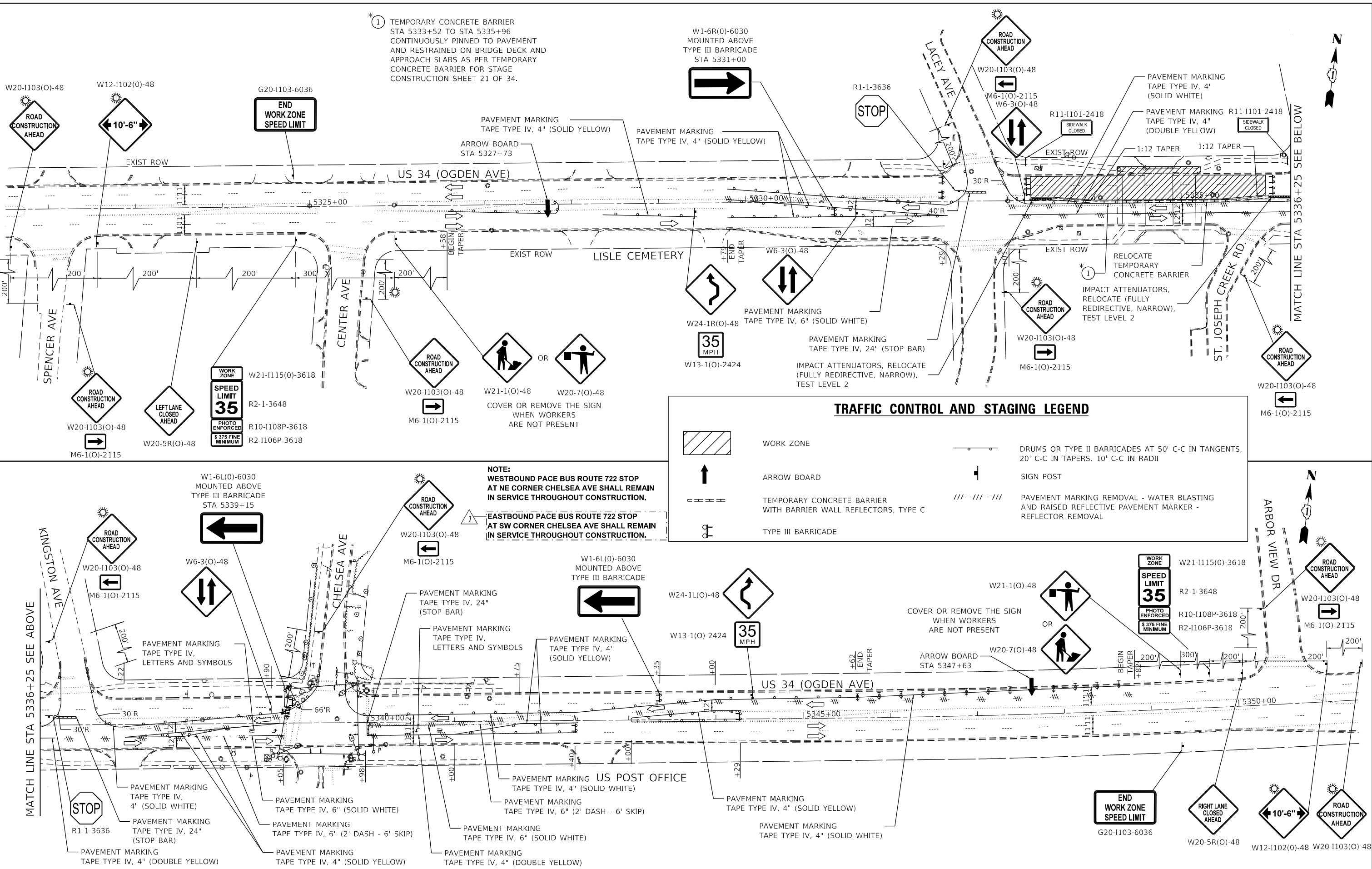
**MAINTENANCE OF TRAFFIC STAGE I  
US 34 (OGDEN AVENUE) AT ST. JOSEPH CREEK**

SCALE:      SHEET      OF      SHEETS      STA.      TO      STA.

F.A.P. RTE.	SECTION	COUNTY	TOTAL SHEETS	SHEET NO.
311	10Y-BJR	DUPAGE	34	7
CONTRACT NO. 62G51				
ILLINOIS FED. AID PROJECT				

FILE NAME = Q:\Engineering\LiveProjects\13843.IDOT DUR AES\Work D-der-11\CADD\CADD Sheets\Cv1\162051-shr-MOT Stage 1.dgn

FILE NAME = D:\Engineering\Live\Projects\13843.IDOT DUR AES\Work D-der-11\CADD\CADD Sheets\Cv\1\0162051-sht-MOT Stage II.dgn



\* 1 TEMPORARY CONCRETE BARRIER  
 STA 5333+52 TO STA 5335+96  
 CONTINUOUSLY PINNED TO PAVEMENT  
 AND RESTRAINED ON BRIDGE DECK AND  
 APPROACH SLABS AS PER TEMPORARY  
 CONCRETE BARRIER FOR STAGE  
 CONSTRUCTION SHEET 21 OF 34.

W1-6R(O)-6030  
 MOUNTED ABOVE  
 TYPE III BARRICADE  
 STA 5331+00

R1-1-3636  
 STOP

W20-1103(O)-48  
 M6-1(O)-2115  
 W6-3(O)-48

R11-1101-2418  
 SIDEWALK CLOSED

PAVEMENT MARKING  
 TAPE TYPE IV, 4" (SOLID WHITE)  
 PAVEMENT MARKING R11-1101-2418  
 TAPE TYPE IV, 4" (DOUBLE YELLOW)

PAVEMENT MARKING  
 TAPE TYPE IV, 4" (SOLID YELLOW)  
 ARROW BOARD  
 STA 5327+73

PAVEMENT MARKING  
 TAPE TYPE IV, 4" (SOLID YELLOW)

EXIST ROW  
 1:12 TAPER  
 1:12 TAPER

RELOCATE  
 TEMPORARY  
 CONCRETE BARRIER

IMPACT ATTENUATORS,  
 RELOCATE (FULLY  
 REDIRECTIVE, NARROW),  
 TEST LEVEL 2

ST. JOSEPH CREEK RD.

MATCH LINE STA 5336+25 SEE BELOW

W20-1103(O)-48  
 M6-1(O)-2115

W20-5R(O)-48

WORK ZONE  
 SPEED LIMIT  
 35  
 PHOTO ENFORCED  
 \$ 375 FINE  
 MINIMUM

W21-1115(O)-3618

R2-1-3648

R10-1108P-3618

R2-1106P-3618

ROAD CONSTRUCTION AHEAD

W20-1103(O)-48

M6-1(O)-2115

ROAD CONSTRUCTION AHEAD

W21-1(O)-48

W20-7(O)-48

COVER OR REMOVE THE SIGN  
 WHEN WORKERS  
 ARE NOT PRESENT

ROAD CONSTRUCTION AHEAD

W24-1R(O)-48

35  
 MPH

W13-1(O)-2424

PAVEMENT MARKING  
 TAPE TYPE IV, 24" (STOP BAR)  
 IMPACT ATTENUATORS, RELOCATE  
 (FULLY REDIRECTIVE, NARROW),  
 TEST LEVEL 2

ROAD CONSTRUCTION AHEAD

W20-1103(O)-48

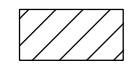



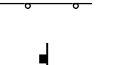
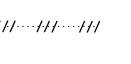

M6-1(O)-2115

ROAD CONSTRUCTION AHEAD

W20-1103(O)-48

M6-1(O)-2115

**TRAFFIC CONTROL AND STAGING LEGEND**

-  WORK ZONE
-  ARROW BOARD
-  TEMPORARY CONCRETE BARRIER WITH BARRIER WALL REFLECTORS, TYPE C
-  TYPE III BARRICADE
-  DRUMS OR TYPE II BARRICADES AT 50' C-C IN TANGENTS, 20' C-C IN TAPERS, 10' C-C IN RADII
-  SIGN POST
-  PAVEMENT MARKING REMOVAL - WATER BLASTING AND RAISED REFLECTIVE PAVEMENT MARKER - REFLECTOR REMOVAL

**NOTE:**  
 WESTBOUND PACE BUS ROUTE 722 STOP  
 AT NE CORNER CHELSEA AVE SHALL REMAIN  
 IN SERVICE THROUGHOUT CONSTRUCTION.  
 EASTBOUND PACE BUS ROUTE 722 STOP  
 AT SW CORNER CHELSEA AVE SHALL REMAIN  
 IN SERVICE THROUGHOUT CONSTRUCTION.

ROAD CONSTRUCTION AHEAD

W20-1103(O)-48

M6-1(O)-2115

ROAD CONSTRUCTION AHEAD

W6-3(O)-48

ROAD CONSTRUCTION AHEAD

W20-1103(O)-48

M6-1(O)-2115

ROAD CONSTRUCTION AHEAD

W1-6L(O)-6030  
 MOUNTED ABOVE  
 TYPE III BARRICADE

ROAD CONSTRUCTION AHEAD

W24-1L(O)-48

35  
 MPH

W13-1(O)-2424

COVER OR REMOVE THE SIGN  
 WHEN WORKERS  
 ARE NOT PRESENT

ROAD CONSTRUCTION AHEAD

W21-1(O)-48

OR

ROAD CONSTRUCTION AHEAD

W20-7(O)-48

ARROW BOARD  
 STA 5347+63

WORK ZONE  
 SPEED LIMIT  
 35  
 PHOTO ENFORCED  
 \$ 375 FINE  
 MINIMUM

W21-1115(O)-3618

R2-1-3648

R10-1108P-3618

R2-1106P-3618

ROAD CONSTRUCTION AHEAD

W20-1103(O)-48

M6-1(O)-2115

STOP

R1-1-3636

PAVEMENT MARKING  
 TAPE TYPE IV, 4" (SOLID WHITE)  
 PAVEMENT MARKING  
 TAPE TYPE IV, 24" (STOP BAR)

PAVEMENT MARKING  
 TAPE TYPE IV, 6" (SOLID WHITE)  
 PAVEMENT MARKING  
 TAPE TYPE IV, 6" (2' DASH - 6' SKIP)

PAVEMENT MARKING  
 TAPE TYPE IV, 4" (SOLID YELLOW)

PAVEMENT MARKING  
 TAPE TYPE IV, 4" (SOLID WHITE)  
 PAVEMENT MARKING  
 TAPE TYPE IV, 6" (SOLID WHITE)

PAVEMENT MARKING  
 TAPE TYPE IV, 4" (DOUBLE YELLOW)

US POST OFFICE  
 TAPE TYPE IV, 4" (SOLID WHITE)

PAVEMENT MARKING  
 TAPE TYPE IV, 4" (SOLID YELLOW)

PAVEMENT MARKING  
 TAPE TYPE IV, 4" (SOLID YELLOW)

PAVEMENT MARKING  
 TAPE TYPE IV, 4" (SOLID WHITE)

END  
 WORK ZONE  
 SPEED LIMIT

G20-1103-6036

RIGHT LANE  
 CLOSED  
 AHEAD

W20-5R(O)-48

ROAD CONSTRUCTION AHEAD

W12-1102(O)-48

ROAD CONSTRUCTION AHEAD

W20-1103(O)-48



USER NAME = lchrzasc	DESIGNED - AB	REVISED - 04/11/2019 LRC
PLOT SCALE = 100.0000' / 1"	DRAWN - AB	REVISED -
PLOT DATE = 4/11/2019	CHECKED - TGM	REVISED -
	DATE - 12/07/2018	REVISED -

STATE OF ILLINOIS  
 DEPARTMENT OF TRANSPORTATION

MAINTENANCE OF TRAFFIC STAGE II US 34 (OGDEN AVENUE) AT ST. JOSEPH CREEK			
SCALE: 1"=50'	SHEET	OF SHEETS	STA. TO STA.

F.A.P. RTE. 311	SECTION 10Y-BJR	COUNTY DUPAGE	TOTAL SHEETS 34	SHEET NO. 8
CONTRACT NO. 62G51				
ILLINOIS FED. AID PROJECT				