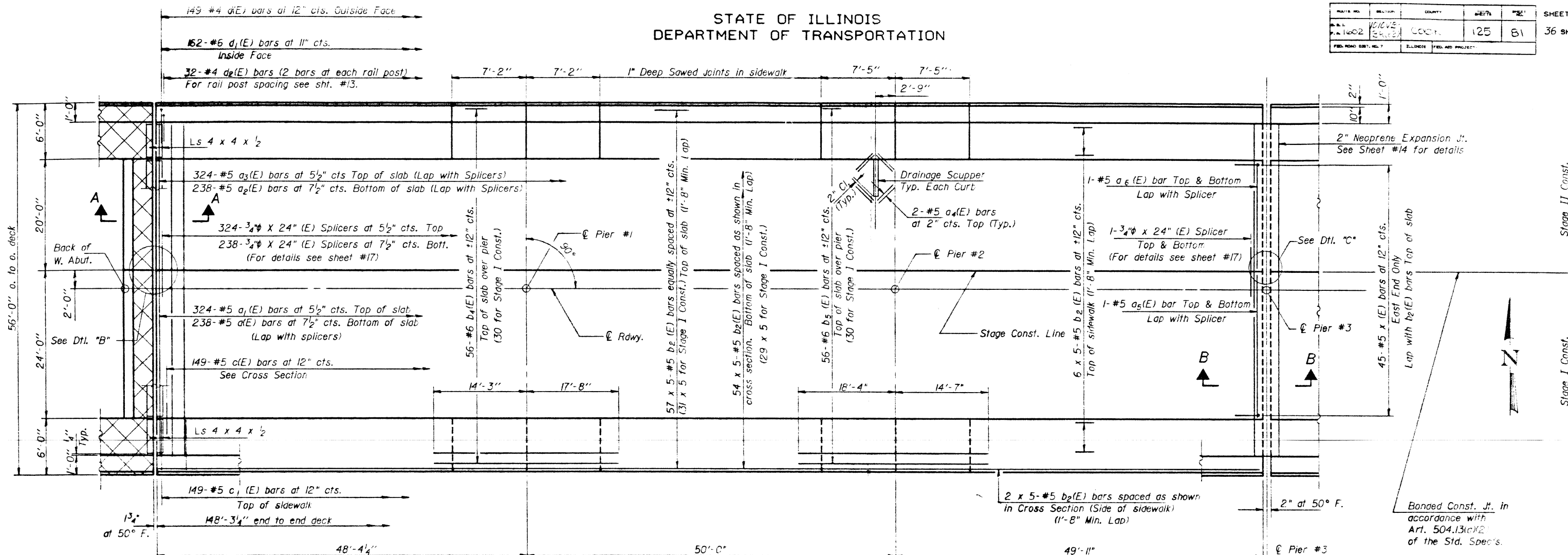


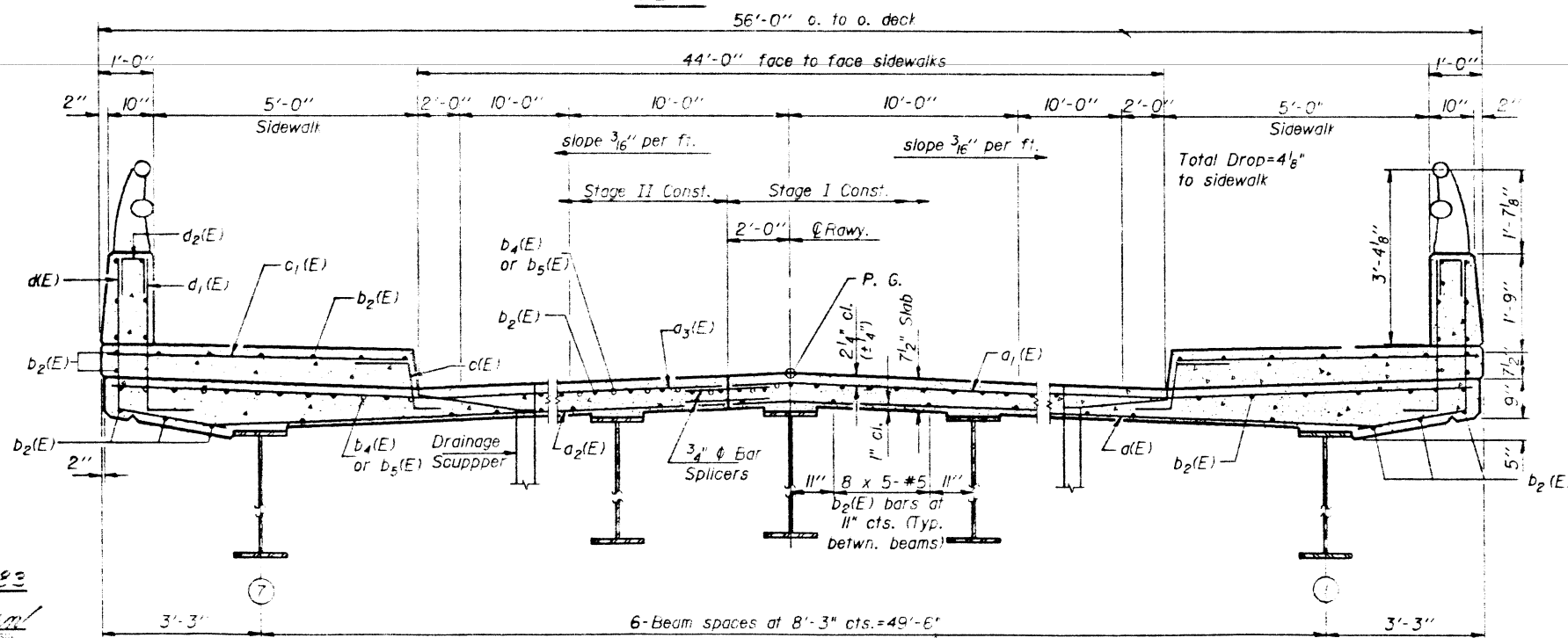
STATE OF ILLINOIS
DEPARTMENT OF TRANSPORTATION

DATE	REVISED	COUNTY	SHEET	NO.
10/02	10/10	COOK	125	81
FED. ROAD DIST. NO. 7		ILLINOIS	FED. AID PROJECT	

SHEET NO. 7
36 SHEETS



PLAN



CROSS SECTION

(Looking East)

Notes: See sheets #11, #12 & #13 for superstructure details and Bill of Material.
Reinforcement bars designated (E) shall be epoxy coated. See Special Provisions.
Bars indicated thus 20 x 3-#5 etc. indicates 20 lines of bars with 3 lengths per line.
All edges shall have standard 3/4" chamfers.
See sheet #11 for Sections at Abutments and Piers.
Cross hatched areas shall be poured after superstructure forms have been removed.

DESIGNED	U.S. Enron
CHECKED	R.M.E.
DRAWN	R. Doty
CHECKED	R.M.E.

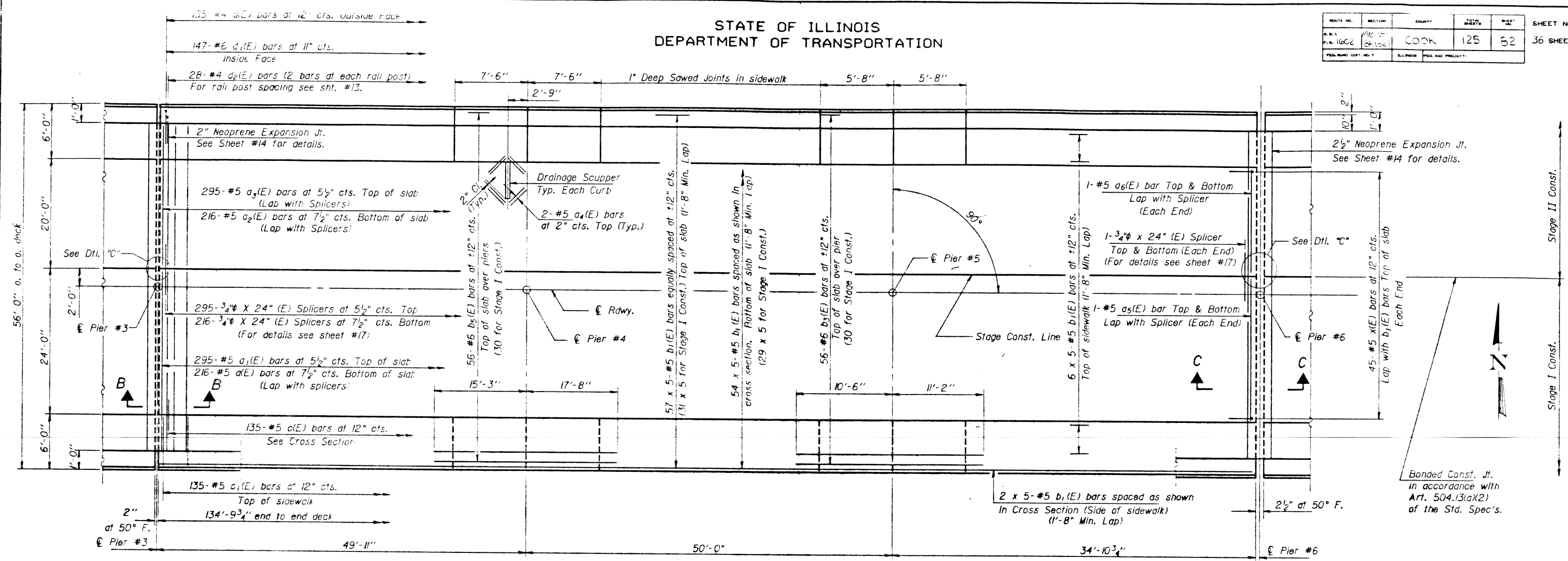
September 7, 1983
EXAMINED James J. Roubicek
PASSED
APPROVED
DIRECTOR OF HIGHWAYS

SUPERSTRUCTURE
(SPANS 1, 2 & 3)
F.A.U. RT. 1602 SEC. 1010-VB-BR(82)
COOK COUNTY
STA. 170+43.00

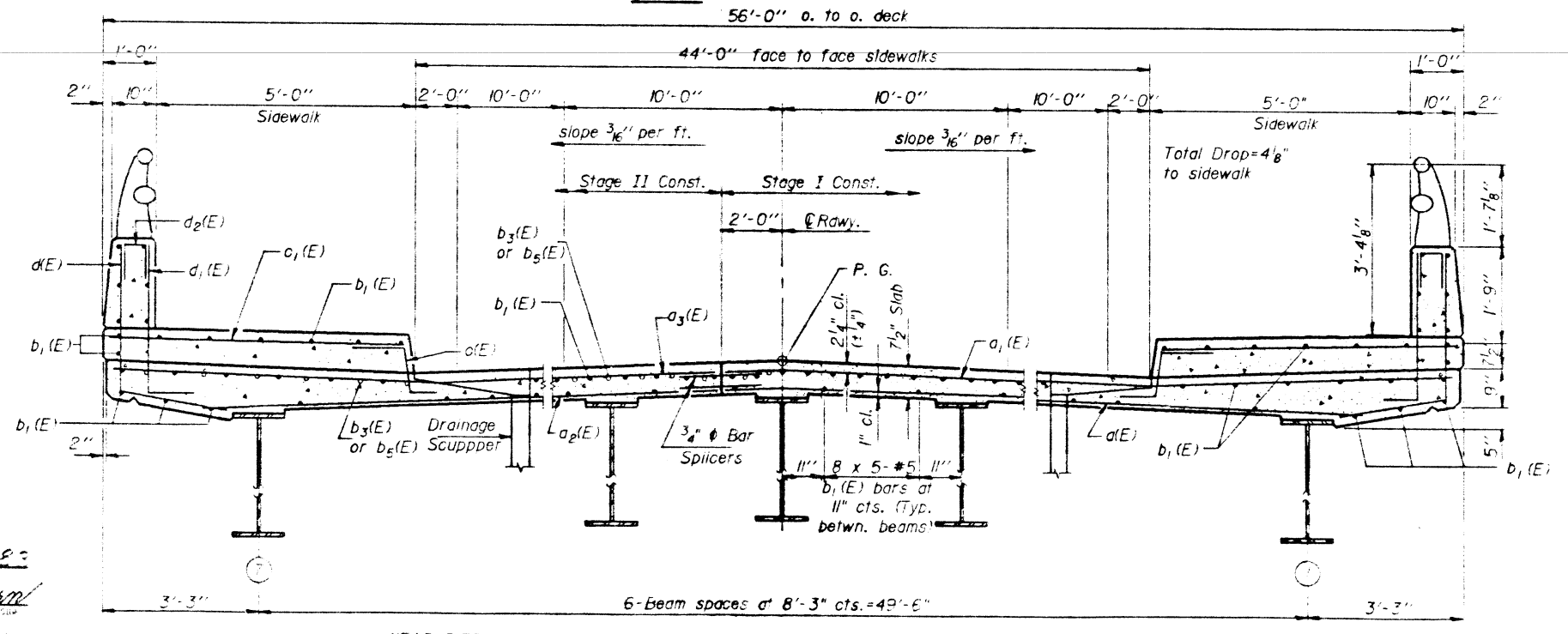
STATE OF ILLINOIS
DEPARTMENT OF TRANSPORTATION

ROUTE NO.	SECTION	COUNTY	TOTAL SHEETS	SHEET NO.
F.A. 1602	1010-VB-BR(82)	COOK	125	52
FED. AID DIST. NO. 7	ILLINOIS	FED. AID PROJECT		

SHEET NO. 8
36 SHEETS



PLAN



CROSS SECTION
(Looking East)

Notes: See sheets #11, #12 & #13 for superstructure details and Bill of Material.
Reinforcement bars designated (E) shall be epoxy coated. See Special Provisions.
Bars indicated thus 20 x 3-#5 etc. indicates 20 lines of bars with 3 lengths per line.
All edges shall have standard 3/4" chamfers.
See sheet #11 for Sections at Piers.

DESIGNED *W. J. Brown*
CHECKED *W. J. Brown*
DRAWN R. Doty
CHECKED *W. J. Brown*

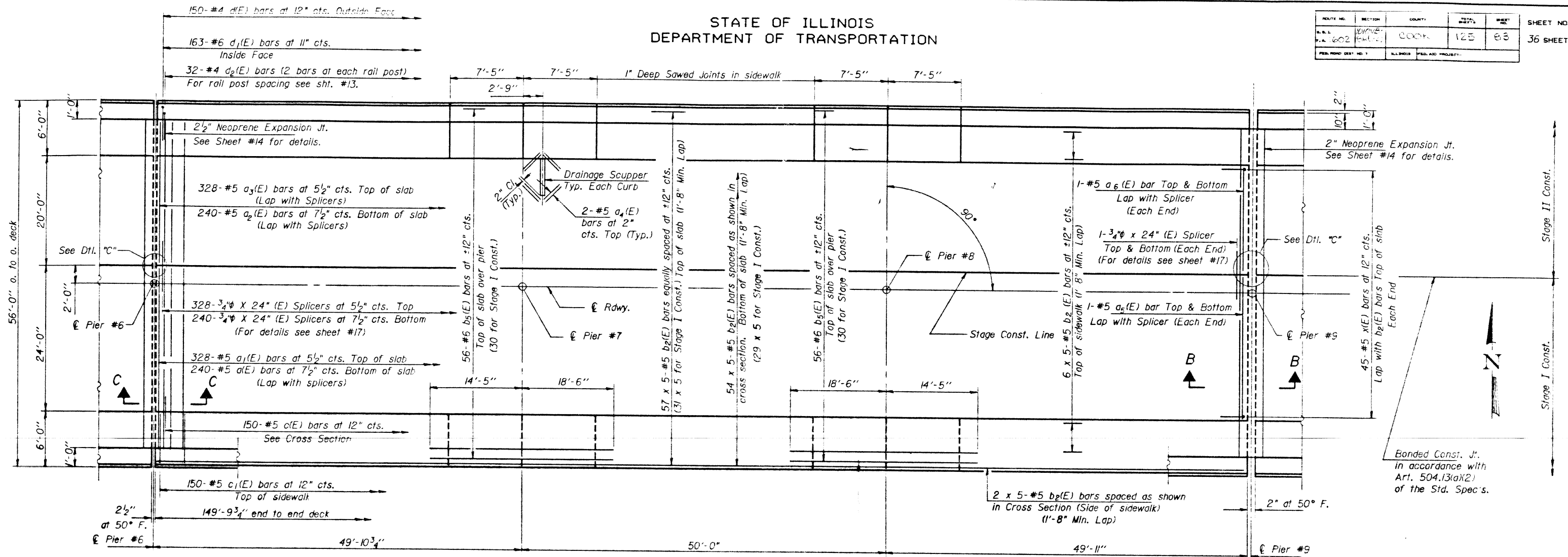
September 7, 1983
EXAMINED *James J. Rabin*
PASSED *W. J. Brown*
APPROVED *W. J. Brown*
DIRECTOR OF HIGHWAYS

SUPERSTRUCTURE
(SPANS 4, 5 & 6)
F.A.U. RT. 1602 SEC. 1010-VB-BR(82)
COOK COUNTY
STA. 170+43.00

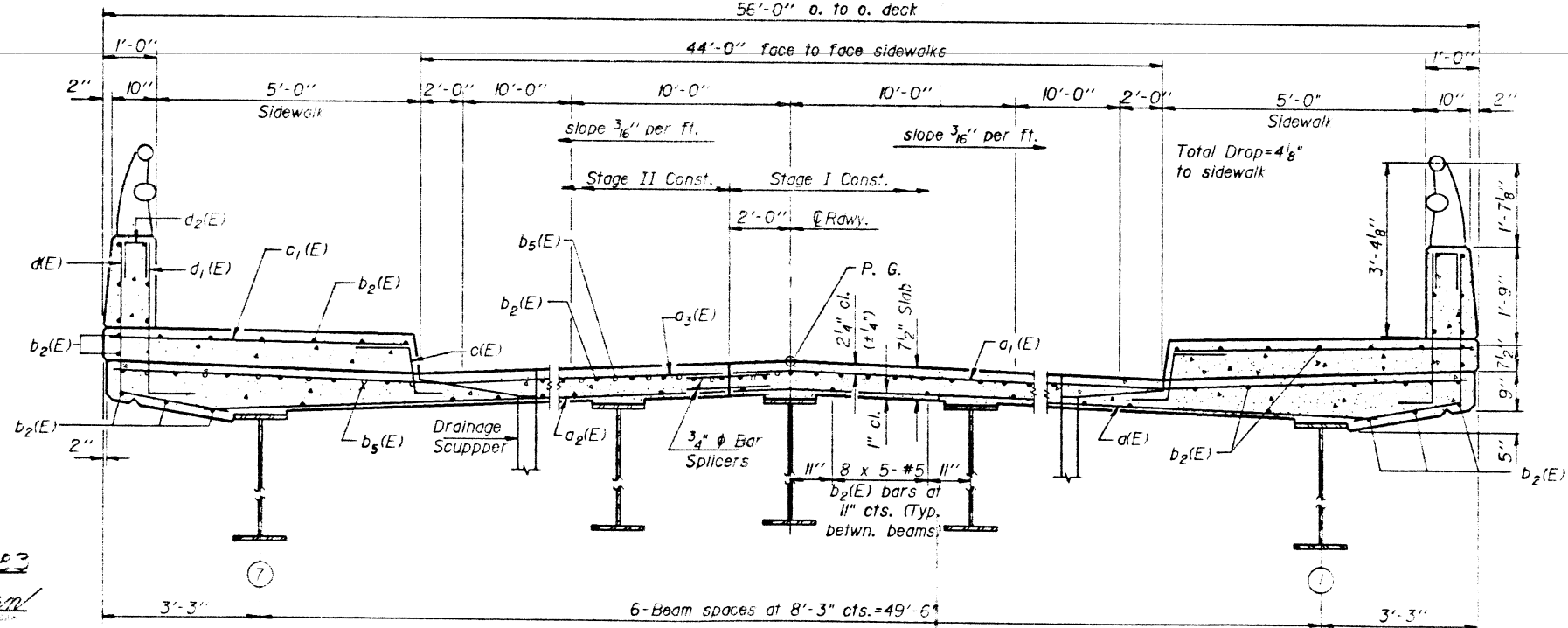
STATE OF ILLINOIS
DEPARTMENT OF TRANSPORTATION

ROUTE NO.	SECTION	COUNTY	TOTAL SHEETS	SHEET NO.
1602	1010-VB-BR(82)	COOK	123	88
F.A.U. RT. 1602 SEC. 1010-VB-BR(82)		ILLINOIS FEDERAL PROJECT		

SHEET NO. 9
36 SHEETS



PLAN



CROSS SECTION
(Looking East)

Notes: See sheets #11, #12 & #13 for superstructure details and Bill of Material.
Reinforcement bars designated (E) shall be epoxy coated. See Special Provisions.
Bars indicated thus 20 x 3-#5 etc. indicates 20 lines of bars with 3 lengths per line.
All edges shall have standard 3/4" chamfers.
See sheet #11 for Sections at Piers.

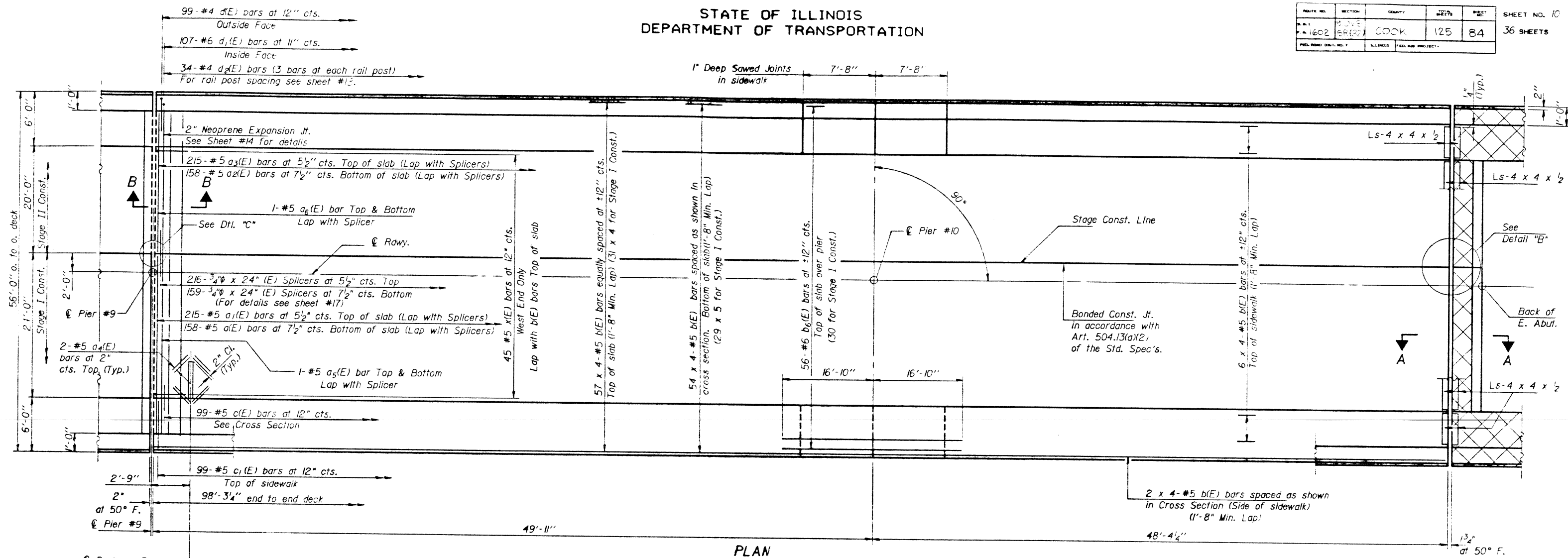
DESIGNED *W. S. Brown*
CHECKED *[Signature]*
DRAWN *R. Doty*
CHECKED *[Signature]*

September 7, 1983
EXAMINED *[Signature]*
PASSED *[Signature]*
APPROVED *[Signature]*
DIRECTOR OF HIGHWAYS

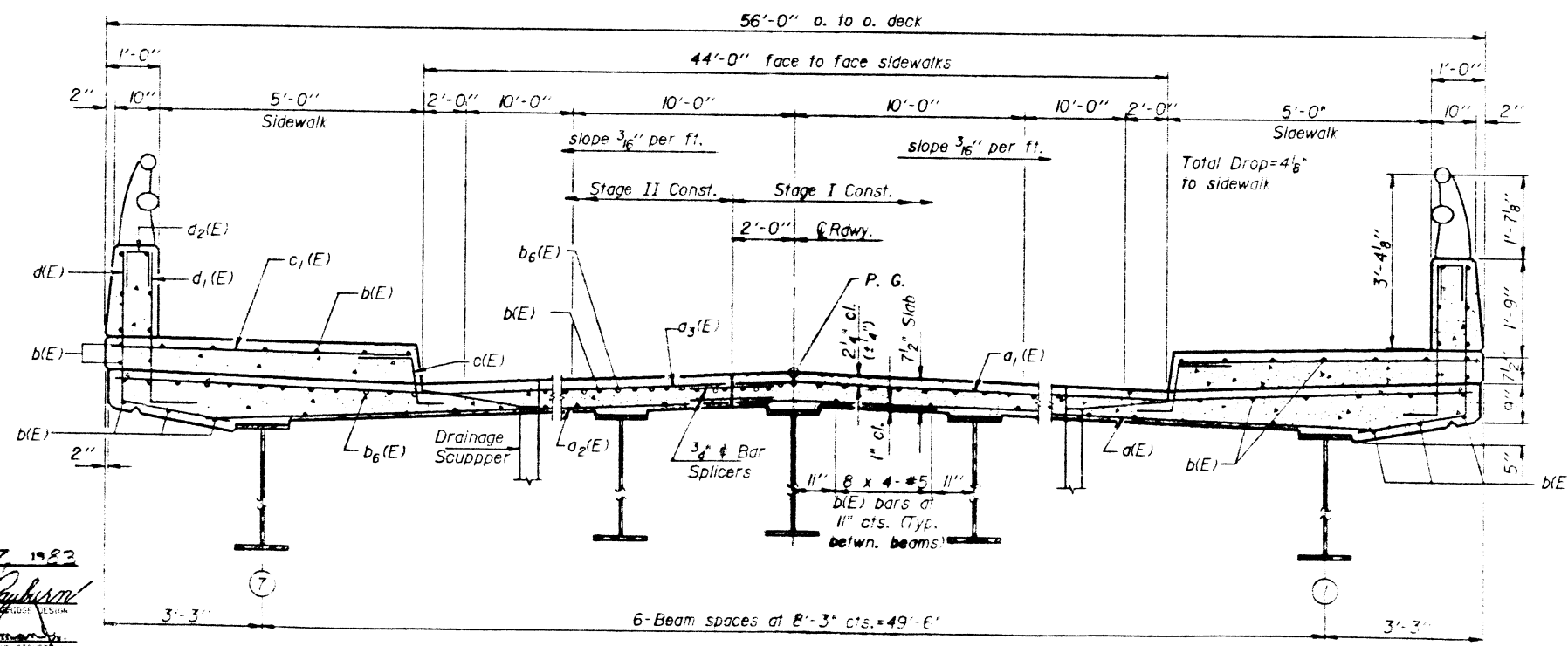
SUPERSTRUCTURE
(SPANS 7, 8 & 9)
F.A.U. RT. 1602 SEC. 1010-VB-BR(82)
COOK COUNTY
STA. 170+43.00

STATE OF ILLINOIS
DEPARTMENT OF TRANSPORTATION

ROUTE NO.	SECTION	COUNTY	SHEETS	POST	SHEET NO. 10
1602	1010-VB-BR(82)	COOK	125	84	36 SHEETS
FED. ROAD DIST. NO. 7	ILLINOIS	FED. AID PROJECT			



PLAN



CROSS SECTION
(Looking East)

Notes: See sheets #11, #12 & #13 for superstructure details and Bill of Materials.
Reinforcement bars designated (E) shall be epoxy coated. See Special Provisions.
Bars indicated thus 20 x 3-#5 etc. indicates 20 lines of bars with 3 lengths per line.
All edges shall have standard 3/4" chamfers.
See sheet #11 for Sections at Abutments and Piers.
Cross hatched areas shall be poured after superstructure forms have been removed.

DESIGNED *W. J. ...*
CHECKED *...*
DRAWN R. Doty
CHECKED *...*

September 7, 1982
EXAMINED *James J. ...*
PASSED *...*
APPROVED *...*
DIRECTOR OF HIGHWAY

SUPERSTRUCTURE
(SPANS 10 AND 11)
F.A.U. RT. 1602 SEC. 1010-VB-BR(82)
COOK COUNTY
STA. 170+43.00

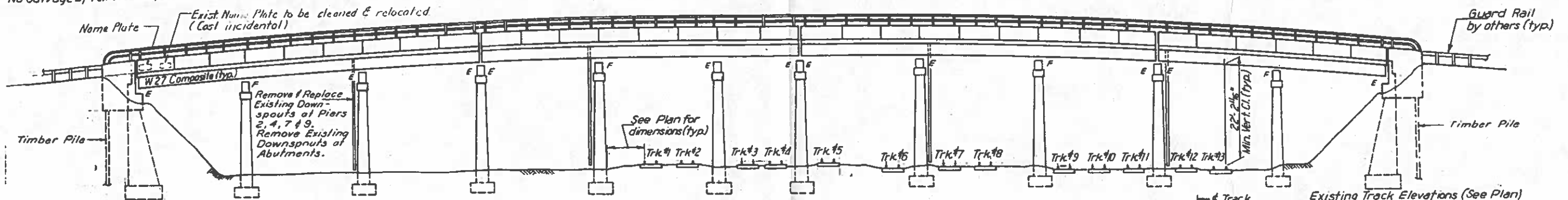
STATE OF ILLINOIS
DEPARTMENT OF TRANSPORTATION

ROUTE NO.	DISTRICT	COUNTY	TOTAL SHEETS	SHEET NO.
397	1000-4	COOK	469	298

SHEET S 1 OF S 13

Bench Mark:
on S.W. abutment @ I.C.R.R. Bridge approx. 6.5' east of end step El. 598.412.
Existing structure (016-0955) is 56' wide and 535' long. Portions of the abutments, piers and the reinforced concrete deck girder superstructure shall be removed in stages to maintain two lanes of traffic.

No Salvage of removed material.

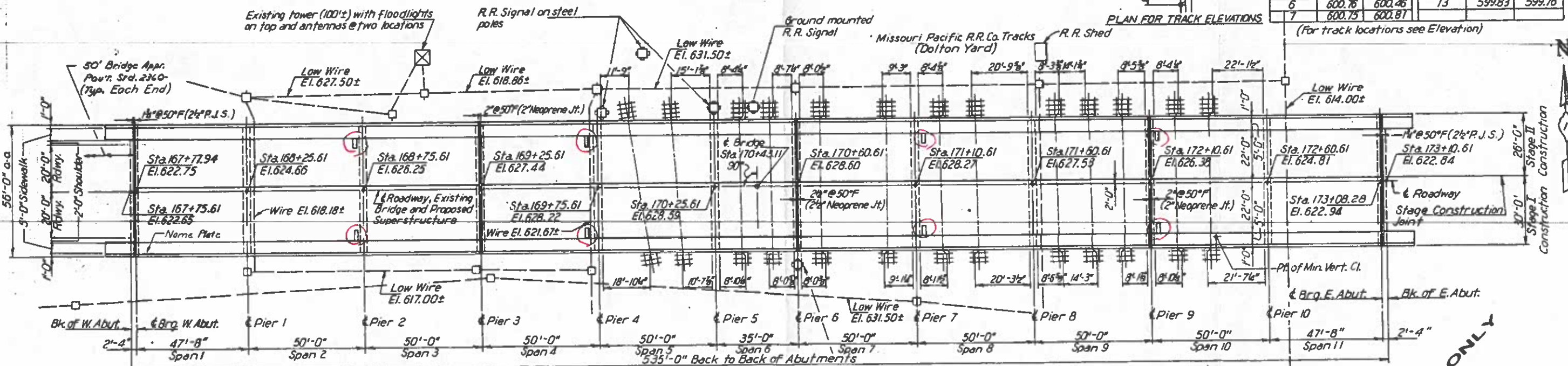
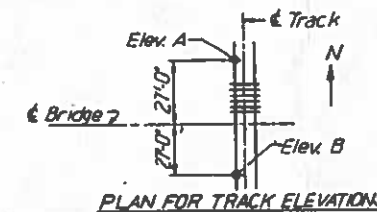


ELEVATION

FOR INFORMATION ONLY

Existing Track Elevations (See Plan)

Track No.	Elev. A	Elev. B	Track No.	Elev. A	Elev. B
1	601.67	601.79	8	600.07	599.96
2	601.80	601.83	9	600.00	599.94
3	601.59	601.67	10	599.94	599.90
4	601.57	601.68	11	599.86	599.79
5	601.72	601.76	12	599.97	599.98
6	600.76	600.46	13	599.83	599.76
7	600.75	600.81			



PLAN

DESIGN STRESSES

f'c=3,500 psi
fy=50,000 psi (M222) Structural
fy=36,000 psi (M183) Structural
fy=60,000 psi (Reinforcement)

PC Sta. 167+50 El. 621.462
PT Sta. 170+50 El. 636.00 V.C.L. = 600'
PT Sta. 173+50 El. 621.00

STATION 170+4.300

FOR INFORMATION ONLY

O-DRAIN SCUPPER ADJUST FOR OVERLAY INCLUDES CONCRETE REPAIR