

STATE OF ILLINOIS
DEPARTMENT OF TRANSPORTATION

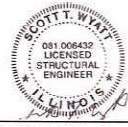
F.A.P. RTE.	SECTION	COUNTY	TOTAL SHEETS	SHEET NO.
301	(177-4-2)BDR	STEPHENSON	19	1
		ILLINOIS	CONTRACT NO. 64S61	

FOR INDEX OF SHEETS, SEE SHEET NO. 2

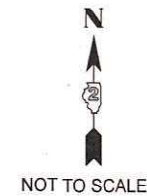
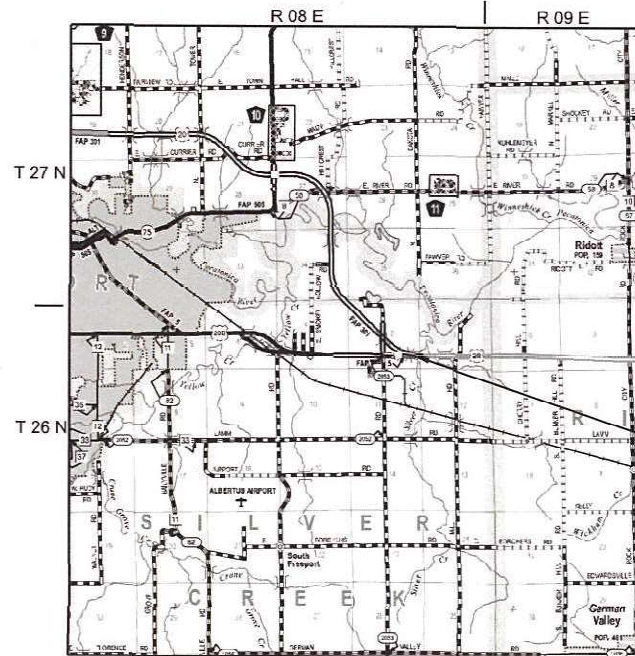
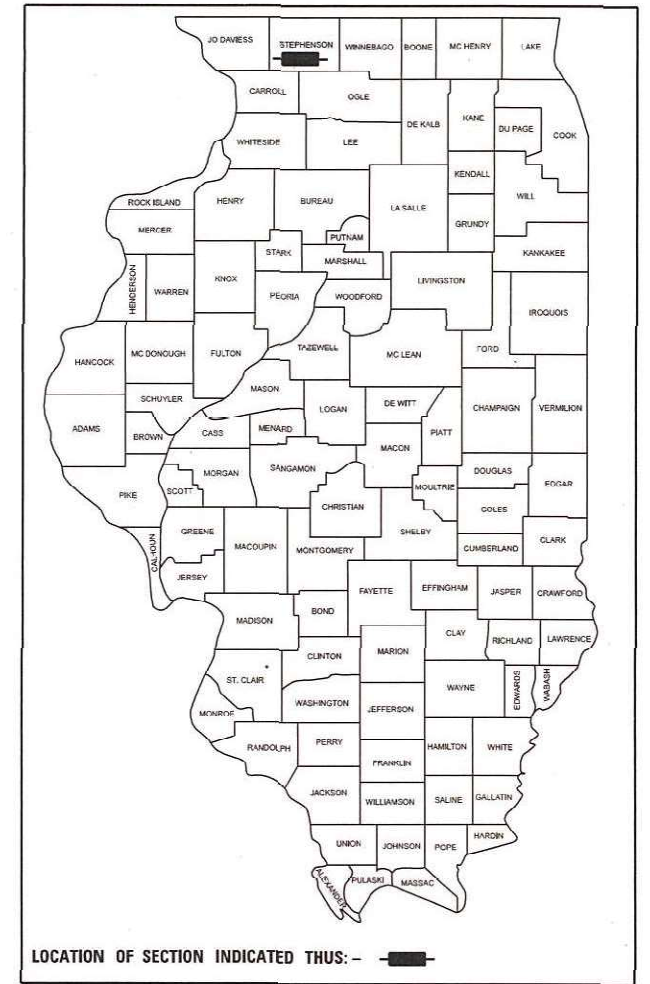
PROPOSED HIGHWAY PLANS

FAP 301 (US 20)
SECTION (177-4-2)BDR
BRIDGE REPAIRS
MAINTENANCE OF TRAFFIC
STEPHENSON COUNTY
C-92-128-23

HOWARD J. HAMILTON, P.E. DATE
LICENSE EXPIRES 11/30/2025
SHEET RANGE 1-8

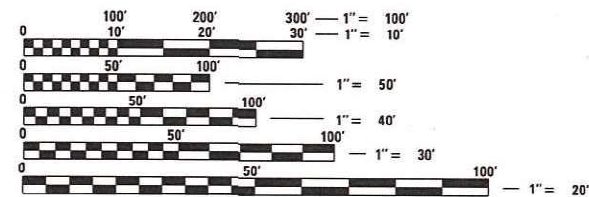


SCOTT T. WYATT, S.E. DATE
LICENSE EXPIRES 11/30/2024
SHEET RANGE 9-14



NOT TO SCALE

PROJECT LOCATION:
SN 089-0058 AND SN 089-0059
PARALLEL STRUCTURES
115' LONG 3-SPAN CONTINUOUS
BEAMS ON SPILL-THROUGH
ABUTMENTS AND CONCRETE
PIERS OVER SILVER CREEK



FULL SIZE PLANS HAVE BEEN PREPARED USING STANDARD
ENGINEERING SCALES. REDUCED SIZED PLANS WILL NOT
CONFORM TO STANDARD SCALES. IN MAKING MEASUREMENTS
ON REDUCED PLANS, THE ABOVE SCALES MAY BE USED.

J.U.L.I.E.
JOINT UTILITY LOCATION INFORMATION FOR EXCAVATORS
1-800-892-0123
OR 811

PROJECT ENGINEER: SCOTT WYATT
PROJECT MANAGER: MAHMOUD ETEMADI

CONTRACT NO. 64S61

GROSS LENGTH = 150.00 FT. = 0.028 MILE
NET LENGTH = 150.00 FT. = 0.028 MILE

STATE OF ILLINOIS
DEPARTMENT OF TRANSPORTATION

SUBMITTED Jan 23 2024
Stephen M. Pravia REGIONAL ENGINEER

March 22, 2024 [Signature]
ENGINEER OF DESIGN AND ENVIRONMENT

March 22, 2024 [Signature]
DIRECTOR OF HIGHWAYS PROJECT IMPLEMENTATION

PRINTED BY THE AUTHORITY
OF THE STATE OF ILLINOIS

SHEET INDEX

1. COVER
2. GENERAL NOTES/ CONSTRUCTION SEQUENCE
- 3-4. SUMMARY OF QUANTITIES
5. MAINTENANCE OF TRAFFIC STAGING TYPICAL SECTION
6. MAINTENANCE OF TRAFFIC STAGE 1 AND 2 APPROACHES
7. MAINTENANCE OF TRAFFIC PLAN STAGE 1
8. MAINTENANCE OF TRAFFIC PLAN STAGE 2
9. PLAN AND ELEVATION
10. DECK SLAB REPAIRS
11. APPROACH REPLACEMENT SN 089-0059
12. EAST APPROACH REPLACEMENT SN 089-0058
13. WEST APPROACH REPLACEMENT SN 089-0058
14. BAR SPLICERS
- 15-18. DISTRICT 2 STANDARD 41.1
19. DISTRICT 2 STANDARD 55.1

STATE HIGHWAY STANDARDS

- | | |
|-----------|--|
| 000001-08 | STANDARD SYMBOLS, ABBREVIATIONS AND PATTERNS |
| 701101-05 | OFF ROAD OPERATIONS, MULTILANE, 15' TO 24" FROM PAVEMENT EDGE |
| 701106-02 | OFF ROAD OPERATIONS, MULTILANE, MORE THAN 15' AWAY |
| 701400-12 | APPROACH TO LANE CLOSURE, FREEWAY/EXPRESSWAY |
| 701401-13 | LANE CLOSURE, FREEWAY/EXPRESSWAY |
| 701402-12 | LANE CLOSURE, FREEWAY/EXPRESSWAY, WITH BARRIER |
| 701411-09 | LANE CLOSURE, MULTILANE, AT ENTRANCE OR EXIT RAMP,
FOR SPEEDS > 45 MPH |
| 701426-09 | LANE CLOSURE, MULTILANE, INTERMITTENT OR MOVING OPER.
FOR SPEEDS > 45 MPH |
| 701901-09 | TRAFFIC CONTROL DEVICES |
| 704001-08 | TEMPORARY CONCRETE BARRIER |
| 780001-05 | TYPICAL PAVEMENT MARKINGS |
| 782006-01 | GUARDRAIL AND BARRIER WALL REFLECTOR MOUNTING DETAILS |

MAINTENANCE OF TRAFFIC GENERAL NOTES

1. THE MAINTENANCE OF TRAFFIC CONTROL (MOT) PLANS SHALL SERVE AS A GUIDE FOR SAFE DIVERSION OF TRAFFIC DURING EXECUTION OF THIS CONTRACT. HOWEVER, THE CONTRACTOR MAY MODIFY THE MOT PLANS TO MEET CONSTRUCTION NEEDS, BUT NOT AT THE EXPENSE OF PUBLIC SAFETY OR CONVENIENCE. ANY CHANGES TO THE MOT PLANS SHALL BE SUBMITTED TO THE TRAFFIC CONTROL SUPERVISOR FOR APPROVAL.
2. THE ENGINEER SHALL BE INFORMED 48 HOURS IN ADVANCE OF ANY PROPOSED CHANGE TO THE MOT PLANS.
3. A FULL DEPTH SAWCUT WILL BE REQUIRED BETWEEN PAVEMENT, CURB AND/OR GUTTER TO REMAIN AND PAVEMENT, CURB AND/OR GUTTER TO BE REMOVED PRIOR TO BEGINNING OF REMOVAL WORK. COST TO BE INCLUDED WITH APPLICABLE REMOVAL ITEMS.
4. STATIONING AND ALIGNMENT IS BASED ON ILLINOIS DEPARTMENT OF TRANSPORTATION SURVEY COMPLETED AFTER THE ORIGINAL CONSTRUCTION SECTIONS EXTENDED WEST ALONG CENTERLINE SKIP DASH IN BOTH ROADWAY CENTERLINES.
5. THE CONTRACTOR SHALL CONTACT THE IDOT DISTRICT 2 ENGINEER AT (815)284-2271 A MINIMUM OF 72 HOURS IN ADVANCE OF BEGINNING WORK.
6. RELOCATE TEMPORARY IMPACT ATTENUATORS SHALL INCLUDE STORAGE AND TRANSPORTATION TO AND FROM STORAGE, WHEN THE DEVICE IS NOT NEEDED FOR A TIME, AS SHOWN ON THE STAGING PLANS. THIS SHALL BE INCLUDED IN THE CONTRACT UNIT PRICE PER EACH FOR IMPACT ATTENUATORS, RELOCATE OF THE TYPE SPECIFIED.
7. WHEN RELOCATE TEMPORARY CONCRETE BARRIER IS SPECIFIED, THE WALL SHALL BE REMOVED, STORAGE AND TRANSPORTATION TO AND FROM STORAGE, WHEN THE WALL IS NOT NEEDED FOR A TIME AS SHOWN ON THE STAGING PLANS, RELOCATED AND REINSTATED AT THE NEW LOCATION. THE REINSTALLATION REQUIREMENTS SHALL BE THE SAME AS THOSE FOR A NEW INSTALLATION. THIS SHALL BE PAID FOR AT THE CONTRACT UNIT PRICE PER FOOT FOR RELOCATE TEMPORARY CONCRETE BARRIER.

MAINTENANCE OF TRAFFIC SEQUENCING

STAGE 1

INSTALL ALL STAGE 1 CONSTRUCTION TRAFFIC CONTROL SIGNS, DRUMS, BARRICADES, TEMPORARY CONCRETE BARRIER, TEMPORARY IMPACT ATTENUATORS, AND TEMPORARY PAVEMENT MARKINGS AS DETAILED IN STAGE 1 PLANS AND APPROPRIATE STANDARD DRAWINGS.

MERGE ALL WESTBOUND TRAFFIC TO THE EXISTING/TEMPORARY INSIDE LANE AND SHOULDER OF SN 098-0059 EAST OF THE SILVER CREEK BRIDGES. MERGE ALL EASTBOUND TRAFFIC TO THE EXISTING/TEMPORARY INSIDE LANE AND SHOULDER OF SN 098-0058 WEST OF THE SILVER CREEK BRIDGES.

COORDINATE WORK TO BE COMPLETED IN THIS STAGE WITH DETAILS IN THE BRIDGE PLANS.

STAGE 2

CHANGE STAGE 1 CONSTRUCTION TRAFFIC CONTROL SIGNS, DRUMS, BARRICADES, TEMPORARY CONCRETE BARRIER, TEMPORARY IMPACT ATTENUATORS, AND TEMPORARY PAVEMENT MARKINGS AS NEEDED TO REFLECT STAGE 2 PLANS AND APPROPRIATE STANDARD DRAWINGS.

MERGE ALL WESTBOUND TRAFFIC TO THE EXISTING/TEMPORARY OUTSIDE LANE AND SHOULDER OF SN 098-0059 EAST OF THE SILVER CREEK BRIDGES. MERGE ALL EASTBOUND TRAFFIC TO THE EXISTING/TEMPORARY OUTSIDE LANE AND SHOULDER OF SN 098-0058 WEST OF THE SILVER CREEK BRIDGES.

REMOVE ALL CONFLICTING TRAFFIC CONTROL ITEMS FROM STAGE 1 SETUP.

COORDINATE WORK TO BE COMPLETED IN THIS STAGE WITH DETAILS IN THE BRIDGE PLANS.

POST STAGE

REMOVE ALL CONSTRUCTION TRAFFIC CONTROL AND TEMPORARY CONSTRUCTION ITEMS.

REMOVE ANY REMAINING EXISTING TEMPORARY PAVEMENT MARKINGS WITHIN THE PERMANENT PAVEMENT MARKING LIMITS.

INSTALL PERMANENT PAVEMENT MARKINGS AND REFLECTORS.

SCHEDULE OF PAVEMENT MARKING AND REMOVAL

ITEM	LOCATION	STATION		OFFSET		PERMANENT MARKING			TEMP	RECESSED PM	MARKING REMOVAL	
		BEGIN	END	MIN	MAX	8"	6"	4"	PM 4"	GROOVING 7"	PERM	TEMP
						FOOT	FOOT	FOOT	FOOT	FOOT	SQ FT	SQ FT
STAGE 1												
REMOVE MARK-WATER BLAST	4" WHITE EDGE LINE WB ONLY	1153+50	1160+50	12' LT	12' RT						233	
REMOVE MARK-WATER BLAST	4" YELLOW EDGE LINE EB & WB	1153+50	1160+50	12' LT (WB)	12' RT (EB)						467	
REMOVE MARK-WATER BLAST	ENTRANCE GORE 4" WHITE	1149+50	1152+00	60' RT	60' RT						83	
REMOVE MARK-WATER BLAST	ENTRANCE GORE 8" WHITE	1149+50	1152+00	60' RT	77' RT						167	
4" WHITE TEMP TAPE	TEMP EB EDGELINE	1136+70	1150+35	0' RT	12' RT				1365			
4" YELLOW TEMP TAPE	TEMP ENTRANCE	1149+00	1150+35	0' RT	34' RT				135			
4" WHITE TEMP TAPE	TEMP ENTRANCE/EB EDGELINE	1149+00	1160+00	0' LT	48' RT				1100			
4" YELLOW TEMP TAPE	TEMP EB EDGELINE	1152+95	1160+00	12' LT	13' LT				705			
4" YELLOW TEMP TAPE	TEMP WB EDGELINE	1153+75	1161+00	12' RT	15' RT				725			
4" WHITE TEMP TAPE	TEMP WB EDGELINE	1153+75	1167+10	0' RT	3' RT				1335			
4" WHITE TEMP TAPE	TEMP EXIT	1165+20	1167+10	0' LT	12' LT				190			
4" WHITE TEMP TAPE	TEMP EXIT/ WB EDGELINE	1168+05	1182+50	0' LT	12' LT				1445			
STAGE 2												
TEMP MARKING REMOVAL	STAGE 1 WHITE EDGELINE EB	1136+70	1150+35	0' RT	12' RT							455
TEMP MARKING REMOVAL	STAGE 1 TEMP ENTRANCE	1149+00	1150+35	0' RT	34' RT							45
TEMP MARKING REMOVAL	TEMP ENTRANCE/EB EDGELINE	1149+00	1160+00	0' LT	48' RT							367
TEMP MARKING REMOVAL	STAGE 1 WHITE EDGELINE WB	1153+75	1167+10	0' RT	3' RT							445
TEMP MARKING REMOVAL	STAGE 1 TEMP EXIT	1165+20	1167+10	0' LT	12' LT							63
TEMP MARKING REMOVAL	STAGE 1 TEMP EXIT/ EDGELINE EB	1168+05	1182+50	0' LT	12' LT							482
4" YELLOW TEMP TAPE	TEMP EB EDGELINE	1134+90	1161+60	0' RT	12' LT				2670			
4" WHITE TEMP TAPE	TEMP ENTRANCE	1149+00	1149+70	12' RT	36' RT				70			
4" WHITE TEMP TAPE	TEMP EB EDGELINE	1155+45	1158+60	21' RT	21' RT				315			
4" YELLOW TEMP TAPE	TEMP WB EDGELINE	1152+60	1179+10	38' LT	55' LT				2650			
4" WHITE TEMP TAPE	TEMP WB EDGELINE	1152+60	1160+60	12' LT	19' LT				800			
POST STAGE												
TEMP MARKING REMOVAL	STAGE 1 YELLOW EDGELINE EB	1152+95	1160+00	12' LT	13' LT							235
TEMP MARKING REMOVAL	STAGE 1 YELLOW EDGELINE WB	1153+75	1161+00	12' RT	15' RT							242
TEMP MARKING REMOVAL	STAGE 2 TEMP ENTRANCE	1149+00	1149+70	12' RT	36' RT							23
TEMP MARKING REMOVAL	STAGE 2 YELLOW EDGELINE EB	1134+90	1161+60	0' RT	12' LT							890
TEMP MARKING REMOVAL	STAGE 2 WHITE EB EDGELINE	1155+45	1158+60	21' RT	21' RT							105
TEMP MARKING REMOVAL	STAGE 2 YELLOW EDGELINE WB	1152+60	1179+10	38' LT	55' LT							883
TEMP MARKING REMOVAL	STAGE 2 WHITE EDGELINE WB	1152+60	1160+60	12' LT	19' LT							267
PERMANENT PAVEMENT MARKING												
PERMANENT WHITE MARK	YELLOW EDGELINE WB & EB	1153+50	1160+50	12' LT (WB)	12' RT (EB)			700				
PERMANENT YELLOW MARK	WHITE EDGELINE WB & EB	1153+50	1160+50	12' LT (WB)	12' RT (EB)			700				
PERMANENT WHITE MARK	CL SKIP DASH WB & EB	1152+00	1161+00	51' LT (EB)	53' RT (WB)		450			450		
PERMANENT WHITE MARK	ENTRANCE GORE 4" WHITE	1149+50	1152+00	60' RT	60' RT			250				
PERMANENT WHITE MARK	ENTRANCE GORE 8" WHITE	1149+50	1152+00	60' RT	77' RT			250				
TOTAL						250	450	1,650	13,505	450	950	4,502

SCHEDULE OF TEMPORARY CONCRETE BARRIER AND REFLECTORS

Location	Station		TEMP CONC BARRIER		REFLECTORS, TY C, SPEC
	Begin	End	SET	RELOCATE	
			STAGE 1	STAGE 2	PARAPET (80' C-C)
			FOOT	FOOT	POST-STAGE EACH
WESTBOUND LANES	1155+43	1159+31	388	388	
EASTBOUND LANES	1154+10	1158+35	425	425	
SN 098-0058					
NORTH PARAPET	1156+30	1157+48			2
SOUTH PARAPET	1156+30	1157+48			2
NW CORNER GUARDRAIL	1154+80	1156+30			6
SW CORNER GUARDRAIL	1154+80	1156+30			6
SE CORNER GUARDRAIL	1157+48	1159+50			9
SN 098-0059					
SOUTH PARAPET	1156+30	1157+48			2
NORTH PARAPET	1156+30	1157+48			2
SE CORNER GUARDRAIL	1157+48	1159+50			9
NE CORNER GUARDRAIL	1157+48	1159+50			9
TOTAL			813	813	47

MODEL: D:\ch...
FILE NAME: C:\Users\acott\OneDrive\US 20 Silver Creek\64S61\Submittal\12-24-2024\12-23-2024\US 20 Silver Creek\NOTES.rvt



USER NAME = soottw	DESIGNED -	REVISED -
PLOT SCALE = 100,0000' / in.	DRAWN - DWS	REVISED -
PLOT DATE = 1/22/2024	CHECKED -	REVISED -
	DATE -	REVISED -

**STATE OF ILLINOIS
DEPARTMENT OF TRANSPORTATION**

**US 20 CROSSING SILVER CREEK
GENERAL NOTES / CONSTRUCTION SEQUENCE**

SCALE: SHEET 2 OF 20 SHEETS STA. TO STA.

F.A.P. RTE. 301	SECTION (177-4.2)BDR	COUNTY STEPHENSON	TOTAL SHEETS 19	SHEET NO. 2
CONTRACT NO. 64S61				
ILLINOIS FED. AID PROJECT				

SUMMARY OF QUANTITIES

				CONSTRUCTION CODE		
				100% STATE	100% STATE	
CODE NO.	ITEM	UNIT	TOTAL QUANTITY	BRIDGE		
				0013 SN 089-0058	0013 SN 098-0059	
50102400	CONCRETE REMOVAL	CU YD	161	133	28	
50300225	CONCRETE STRUCTURES	CU YD	31	31		
50300255	CONCRETE SUPERSTRUCTURE	CU YD	187	151	36	
50300300	PROTECTIVE COAT	SQ YD	392	320	72	
50800205	REINFORCEMENT BARS, EPOXY COATED	POUND	42,091	35736	6355	
50800515	BAR SPLICERS	EACH	253	218	35	
60267000	INLETS TO BE RECONSTRUCTED	EACH	1	1		
67100100	MOBILIZATION	L SUM	1	1		
70100205	TRAFFIC CONTROL AND PROTECTION, STANDARD 701401	L SUM	1	1		
70100207	TRAFFIC CONTROL AND PROTECTION, STANDARD 701402	EACH	2	1	1	
70100420	TRAFFIC CONTROL AND PROTECTION, STANDARD 701411	EACH	2	1	1	
70107025	CHANGEABLE MESSAGE SIGN	CAL DA	30	30		
70307120	TEMPORARY PAVEMENT MARKING - LINE 4" - TYPE IV TAPE	FOOT	13505	6360	7145	
70300150	SHORT TERM PAVEMENT MARKING REMOVAL	SQ FT	4502	2120	2382	
70400100	TEMPORARY CONCRETE BARRIER	FOOT	813	425	388	

MODEL: Default
 FILE NAME: C:\Users\scottw\Desktop\W07_US 20 Silver Creek 64S61\Summary\Summary 1-22-24\1-22-24\US 20 Silver Creek 64S61.dgn

Environmental Design International Inc.
 Civil, Survey, Environmental and Construction Inspection Services
 33 W. MONROE STREET, SUITE 1525, CHICAGO, IL 60603
 Ph: (312) 345-1400 Fax: (312) 345-2529 www.edi-intl.com

USER NAME = scottw	DESIGNED -	REVISED -
	DRAWN -	REVISED -
PLOT SCALE = 2,0012" / in.	CHECKED -	REVISED -
PLOT DATE = 1/22/2024	DATE -	REVISED -

STATE OF ILLINOIS
DEPARTMENT OF TRANSPORTATION

US 20 CROSSING SILVER CREEK
SUMMARY OF QUANTITIES

SCALE: SHEET 3 OF 20 SHEETS STA. TO STA.

F.A.P. RTE.	SECTION	COUNTY	TOTAL SHEETS	SHEET NO.
301	(177-4-2)BDR	STEPHENSON	19	3
CONTRACT NO. 64S61				
ILLINOIS FED. AID PROJECT				

SUMMARY OF QUANTITIES

CONSTRUCTION CODE

100% STATE

BRIDGE

CODE NO.	ITEM	UNIT	TOTAL QUANTITY	BRIDGE	
				SN 098-0058	SN 098-0059
70400200	RELOCATE TEMPORARY CONCRETE BARRIER	FOOT	813	425	388
70600250	IMPACT ATTENUATORS, TEMPORARY (NON- REDIRECTIVE), TEST LEVEL 3	EACH	2	1	1
70600350	IMPACT ATTENUATORS, RELOCATE (NON- REDIRECTIVE), TEST LEVEL 3	EACH	2	1	1
* 78009004	MODIFIED URETHANE PAVEMENT MARKING, TYPE D - LINE 4"	FOOT	2500	1375	1125
* 78009006	MODIFIED URETHANE PAVEMENT MARKING, TYPE D - LINE 6"	FOOT	450	225	225
* 78009008	MODIFIED URETHANE PAVEMENT MARKING, TYPE D - LINE 8"	FOOT	250	250	
* 78011035	GROOVING FOR RECESSED PAVEMENT MARKING 7"	FOOT	450	225	225
78300202	PAVEMENT MARKING REMOVAL-WATER BLASTING	SQ FT	950	483	467
* X7820007	GUARDRAIL REFLECTORS, TYPE C (SPECIAL)	EACH	47	25	22
Z0016001	DECK SLAB REPAIR (FULL DEPTH, TYPE I)	SQ YD	22	10	12
Z0016200	DECK SLAB REPAIR (PARTIAL)	SQ YD	111	50	61

*= SPECIALTY ITEM

MODEL: D:\chm\...
 FILE NAME: F:\projects\Miscellaneous\228102\27\CAD\3-423820-07 US 20 Silver Creek-500.dgn



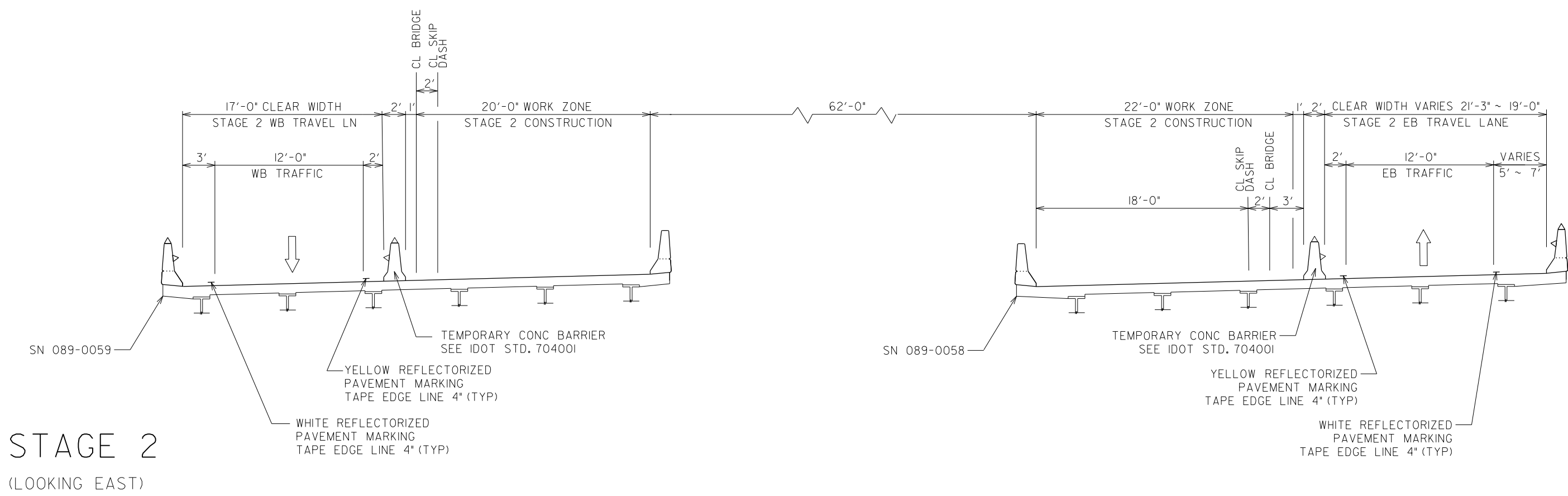
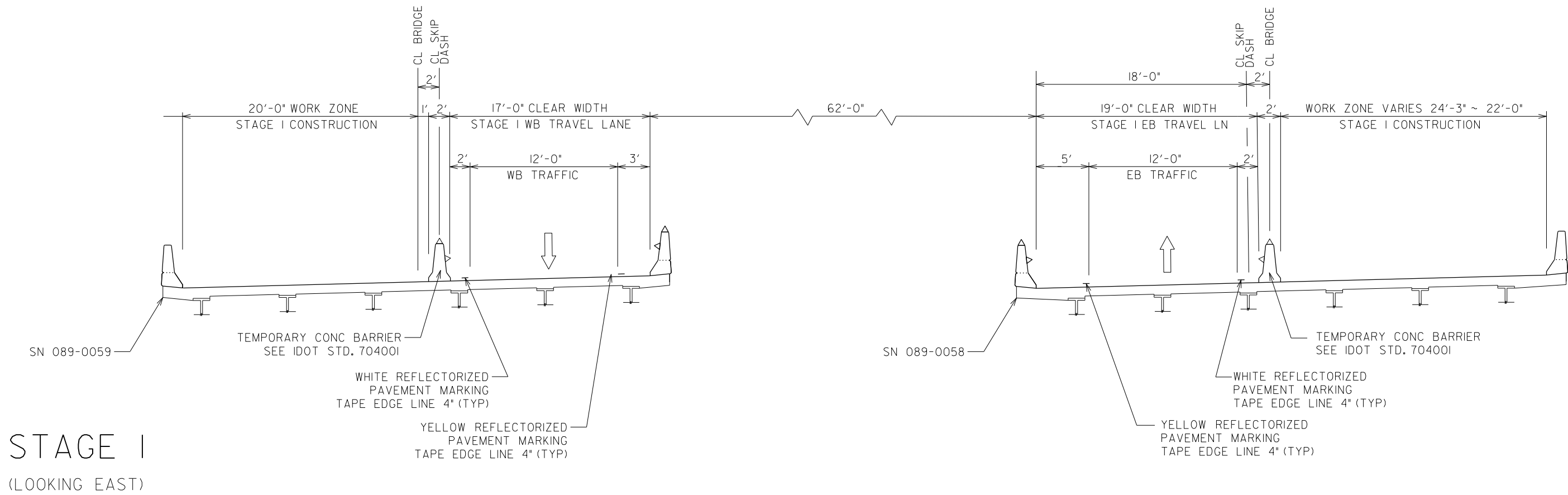
USER NAME = mbutling	DESIGNED -	REVISED -
PLOT SCALE = 2,0000' / in.	DRAWN -	REVISED -
PLOT DATE = 1/19/2024	CHECKED -	REVISED -
	DATE -	REVISED -

**STATE OF ILLINOIS
 DEPARTMENT OF TRANSPORTATION**

**US 20 CROSSING SILVER CREEK
 SUMMARY OF QUANTITIES**

SCALE: SHEET 4 OF 20 SHEETS STA. TO STA.

F.A.P. RTE.	SECTION	COUNTY	TOTAL SHEETS	SHEET NO.
301	(177-4-2)BDR	STEPHENSON	19	4
CONTRACT NO. 64S61				
ILLINOIS FED. AID PROJECT				



MODEL: D:\p1\1 Environmental Design International\22810207\CAD\5-22810207 US 20 Silver Creek\DOT-SEC.dgn
 FILE NAME: E:\p1\1 Environmental Design International\22810207\CAD\5-22810207 US 20 Silver Creek\DOT-SEC.dgn

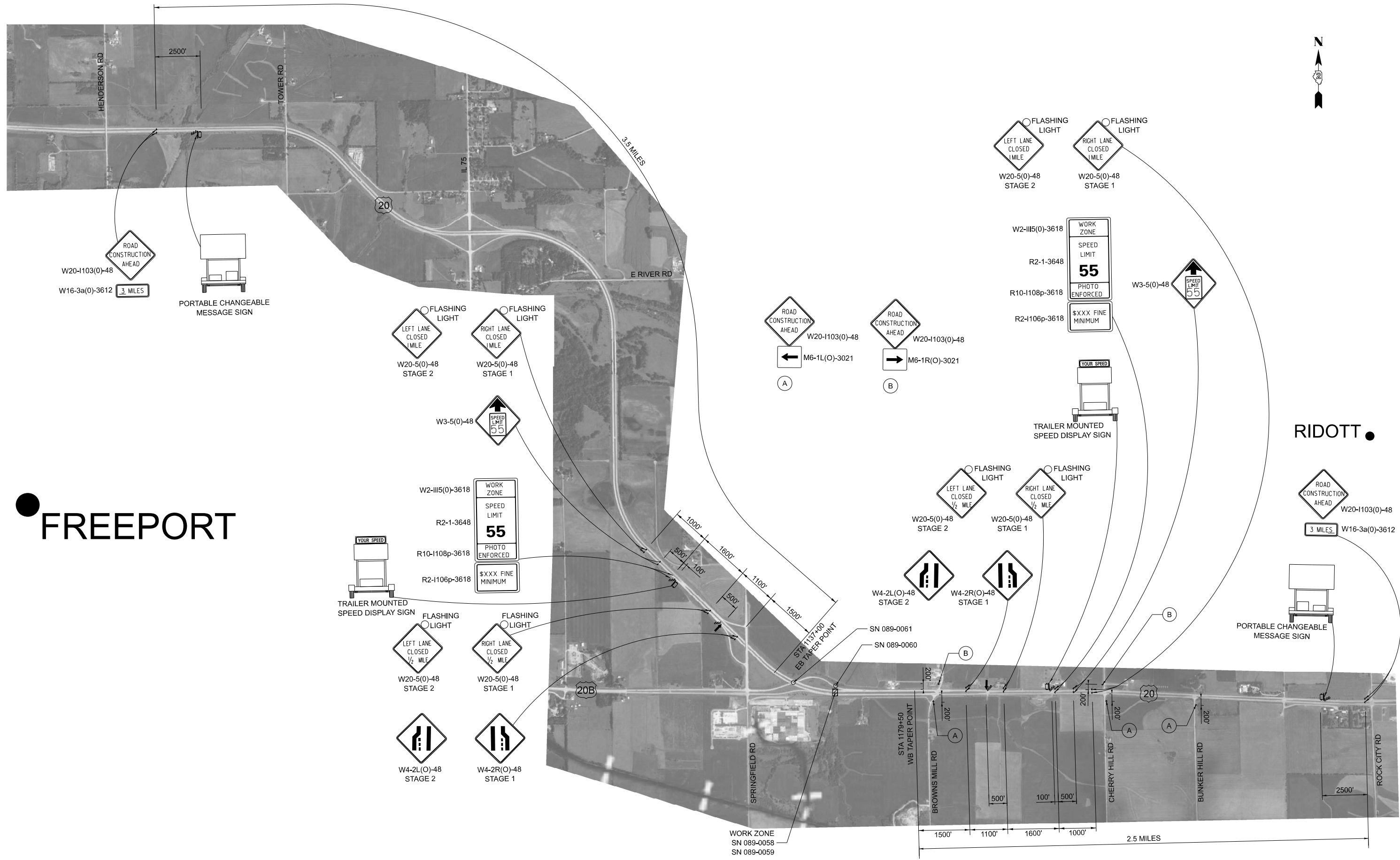


USER NAME = mbutling	DESIGNED - MGB	REVISED -
	DRAWN - MGB	REVISED -
PLOT SCALE = 100,0000' / in.	CHECKED -	REVISED -
PLOT DATE = 1/19/2024	DATE -	REVISED -

**STATE OF ILLINOIS
DEPARTMENT OF TRANSPORTATION**

US 20 CROSSING SILVER CREEK STAGING TYPICAL SECTION		
SCALE: NTS	SHEET 5 OF 20 SHEETS	TO STA.

F.A.P. RTE. 301	SECTION (177-4-2)BDR	COUNTY STEPHENSON	TOTAL SHEETS 19	SHEET NO. 5
CONTRACT NO. 64S61				
ILLINOIS FED. AID PROJECT				



FREEPORT

RIDOTT

MODEL: Default
 FILE NAME: E:\Projects\Miscellaneous\2300\470\CAD\2300\470\US 20 Silver Creek Stage Approach.dgn
 Environmental Design International inc.
 Civil, Survey, Environmental and Construction Inspection Services
 33 W. MONROE STREET, SUITE 1525, CHICAGO, IL 60603
 Ph: (312) 345-1400 Fax: (312) 345-0529 www.edi-design.com

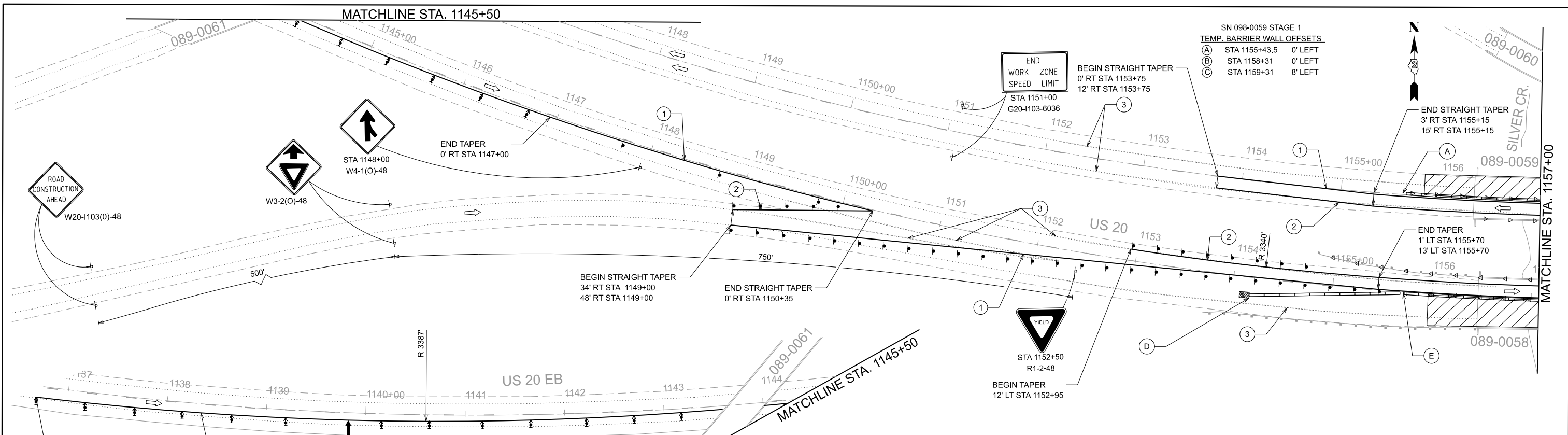
EDI Excellence, Dedication, Innovation	USER NAME = mbuting	DESIGNED -	REVISED -
Environmental Design International inc. Civil, Survey, Environmental and Construction Inspection Services 33 W. MONROE STREET, SUITE 1525, CHICAGO, IL 60603 Ph: (312) 345-1400 Fax: (312) 345-0529 www.edi-design.com	PLOT SCALE = 100,000' / in.	DRAWN -	REVISED -
	PLOT DATE = 1/19/2024	CHECKED -	REVISED -
		DATE -	REVISED -

**STATE OF ILLINOIS
DEPARTMENT OF TRANSPORTATION**

**US 20 CROSSING SILVER CREEK
MAINTENANCE OF TRAFFIC STAGE 1 AND 2 APPROACHES**

SCALE: 1"=0.25 MILE SHEET 6 OF 20 SHEETS STA. TO STA.

F.A.P. RTE. 301	SECTION (177-4-2)BDR	COUNTY STEPHENSON	TOTAL SHEETS 19	SHEET NO. 6
		CONTRACT NO. 64S61		
ILLINOIS FED. AID PROJECT				



SN 098-0059 STAGE 1
TEMP. BARRIER WALL OFFSETS

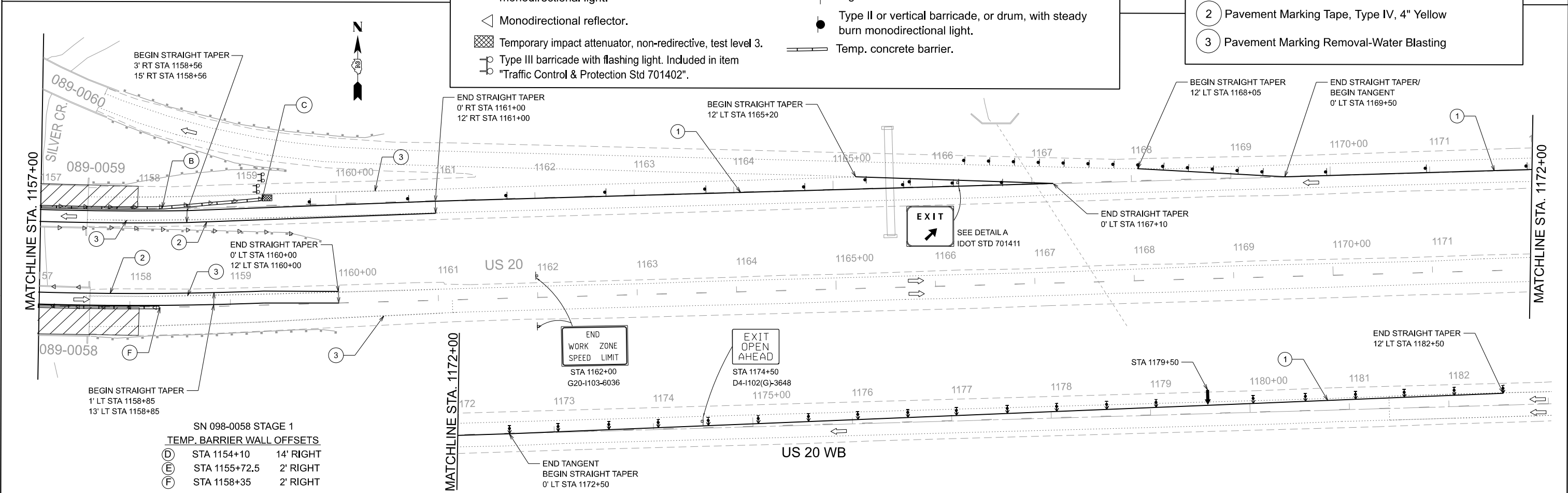
(A)	STA 1155+43.5	0' LEFT
(B)	STA 1158+31	0' LEFT
(C)	STA 1159+31	8' LEFT

SYMBOLS

	Work area		Arrow board.
	Direction indicator barricade with steady burn monodirectional light.		Sign
	Monodirectional reflector.		Type II or vertical barricade, or drum, with steady burn monodirectional light.
	Temporary impact attenuator, non-redirective, test level 3.		Temp. concrete barrier.
	Type III barricade with flashing light. Included in item "Traffic Control & Protection Std 701402".		

ADDITIONAL CALLOUTS

- 1 Pavement Marking Tape, Type IV, 4" White
- 2 Pavement Marking Tape, Type IV, 4" Yellow
- 3 Pavement Marking Removal-Water Blasting



SN 098-0058 STAGE 1
TEMP. BARRIER WALL OFFSETS

(D)	STA 1154+10	14' RIGHT
(E)	STA 1155+72.5	2' RIGHT
(F)	STA 1158+35	2' RIGHT

EDI Excellence, Dedication, Innovation
Environmental Design International, Inc.
Civil, Survey, Environmental and Construction Inspection Services
33 W. MONROE STREET SUITE 1025 CHICAGO, IL 60603
Ph: (312) 345-1400 Fax: (312) 345-0529 www.edienv.com

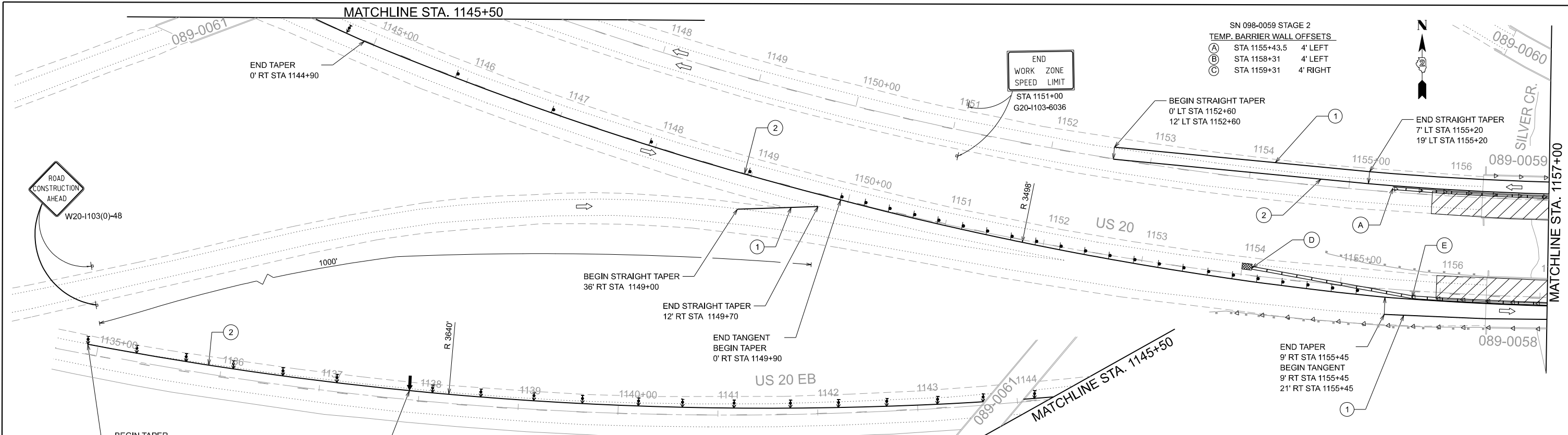
USER NAME	= mbuilding	DESIGNED	-	REVISED	-
DRAWN	-	CHECKED	-	REVISED	-
PLOT SCALE	= 100,000' / in.	DATE	-	REVISED	-
PLOT DATE	= 1/22/2024				

**STATE OF ILLINOIS
DEPARTMENT OF TRANSPORTATION**

**US 20 CROSSING SILVER CREEK
MAINTENANCE OF TRAFFIC STAGE 1**

SCALE: 1"=50'
SHEET 7 OF 20 SHEETS
STA. 1137+00 TO STA. 1179+50

F.A.P. RTE.	SECTION	COUNTY	TOTAL SHEETS	SHEET NO.
301	(177-4-2)BDR	STEPHENSON	19	7
ILLINOIS FED. AID PROJECT			CONTRACT NO. 64S61	



SN 098-0059 STAGE 2
TEMP. BARRIER WALL OFFSETS

(A)	STA 1155+43.5	4' LEFT
(B)	STA 1158+31	4' LEFT
(C)	STA 1159+31	4' RIGHT

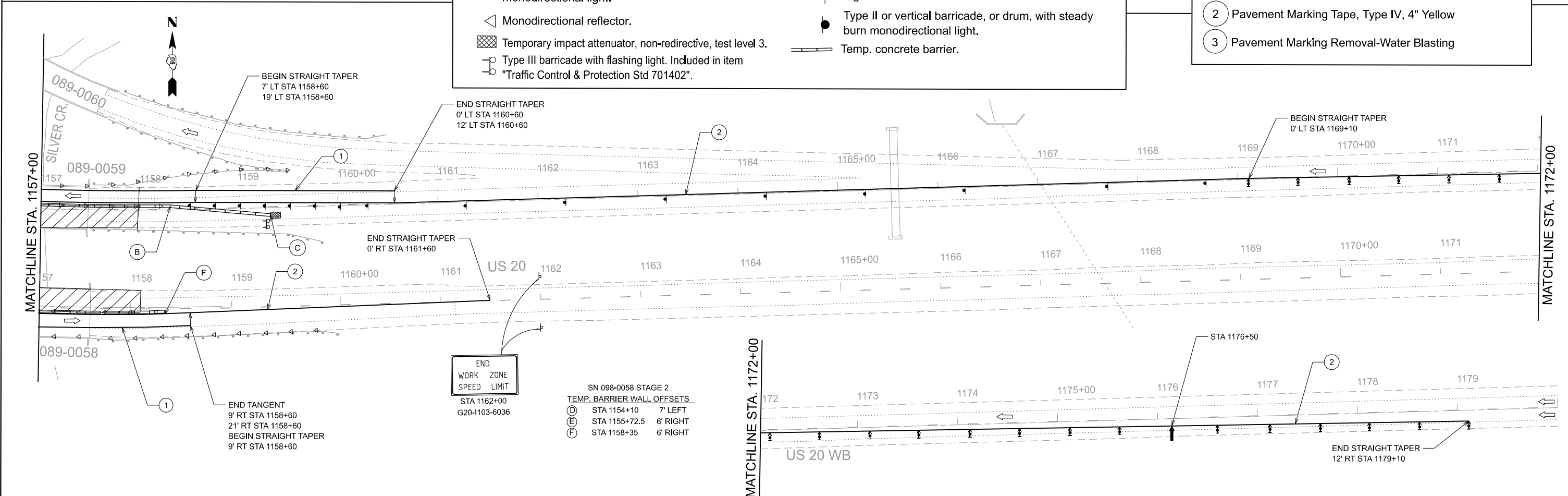


SYMBOLS

	Work area		Arrow board.
	Direction indicator barricade with steady burn monodirectional light.		Sign
	Monodirectional reflector.		Type II or vertical barricade, or drum, with steady burn monodirectional light.
	Temporary impact attenuator, non-redirective, test level 3.		Temp. concrete barrier.
	Type III barricade with flashing light. Included in item "Traffic Control & Protection Std 701402".		

ADDITIONAL CALLOUTS

- (1) Pavement Marking Tape, Type IV, 4" White
- (2) Pavement Marking Tape, Type IV, 4" Yellow
- (3) Pavement Marking Removal-Water Blasting



MODEL: D:\edfi\...
 FILE NAME: E:\Projects\Miscellaneous\2301307\CAD\04\2301307\US 20 Silver Creek\STAGE 2.dgn
 Environmental Design International, Inc.
 33 W. MONROE STREET, SUITE 1025, CHICAGO, IL 60603
 PH: (312) 345-1400 FAX: (312) 345-0529 www.edfi.com

	USER NAME = mbuilding	DESIGNED -	REVISED -	STATE OF ILLINOIS DEPARTMENT OF TRANSPORTATION	US 20 CROSSING SILVER CREEK MAINTENANCE OF TRAFFIC STAGE 2	F.A.P. RTE. = 301	SECTION = (177-4-2)BDR	COUNTY = STEPHENSON	TOTAL SHEETS = 19	SHEET NO. = 8
	PLOT SCALE = 100,000' / in.	CHECKED -	REVISED -			SCALE: 1"=50'	SHEET 8 OF 20 SHEETS	STA. 1137+00 TO STA. 1179+50	ILLINOIS FED. AID PROJECT	CONTRACT NO. 64S61
	PLOT DATE = 1/22/2024	DATE -	REVISED -							

GENERAL NOTES

The structure numbers will remain the same SN 089-0058 and 089-0059

Do not scale plans for construction dimensions.

Plan dimensions and details relative to the existing plans are subject to nominal construction variations. The Contractor shall field verify existing dimensions and details affecting new construction and make necessary approved adjustments prior to construction or ordering materials. Such variations shall not be cause for additional compensation for a change in scope of the work, however, the Contractor will be paid for the quantity actually furnished at the unit price bid for the work.

The Contractor shall contact IDOT District 2 Engineer at 815-284-2271 a minimum of 72 hours before beginning work.

Traffic will be staged during construction.

Reinforcement bars designated (E) shall be epoxy coated.

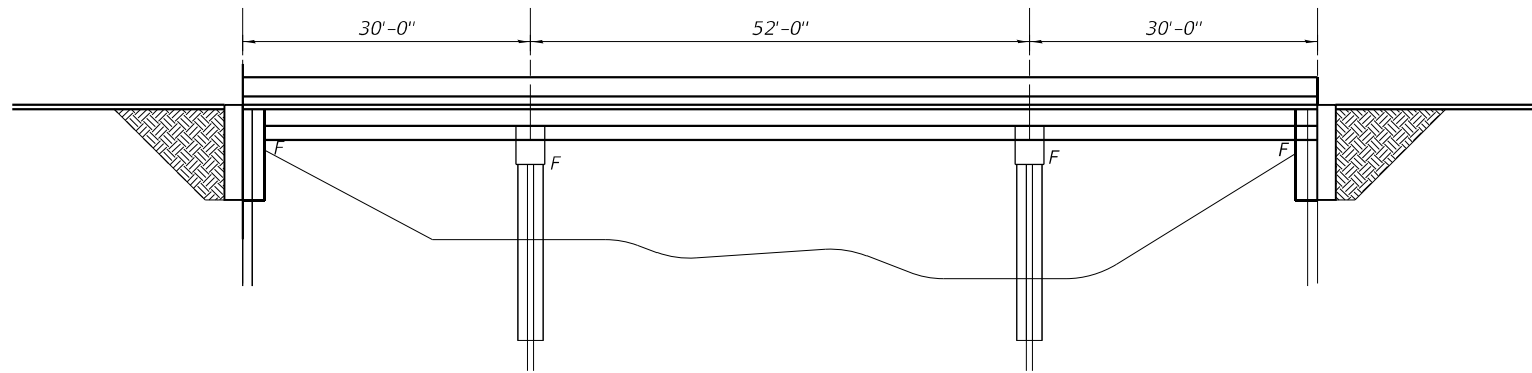
Existing reinforcement bars extending into the removal area shall be cleaned, straightened and incorporated into the new construction. Any reinforcement bars that are damaged during concrete removal shall be replaced with an approved bar splicer or anchorage system. Cost included with Concrete Removal.

SCOPE OF WORK

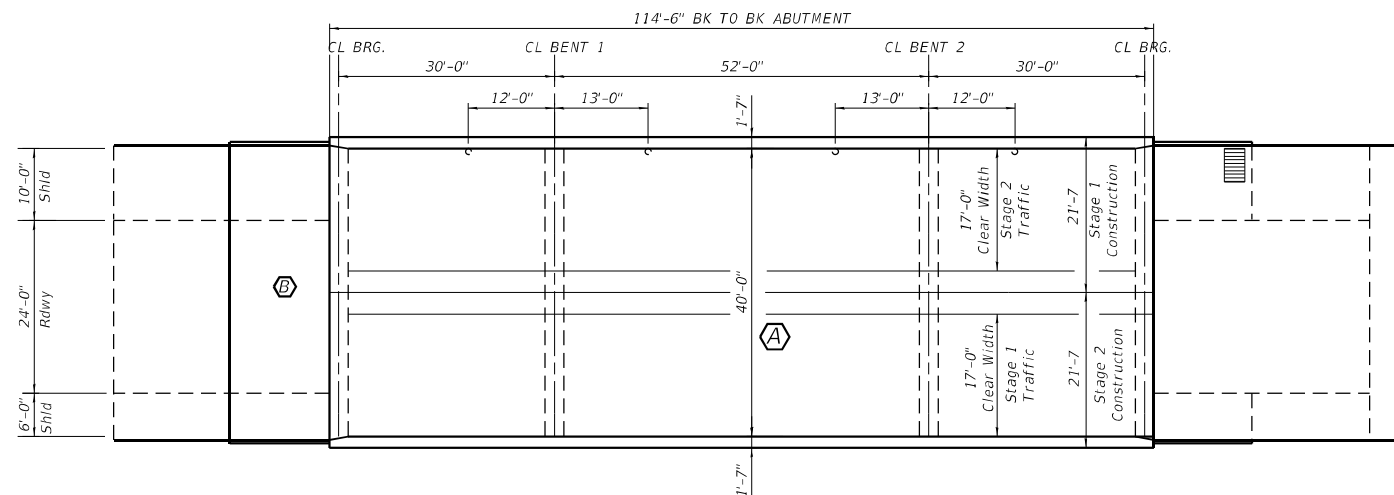
- Ⓐ Deck Slab Repair
- Ⓑ Approach Slab Repairs

TOTAL BILL OF MATERIAL

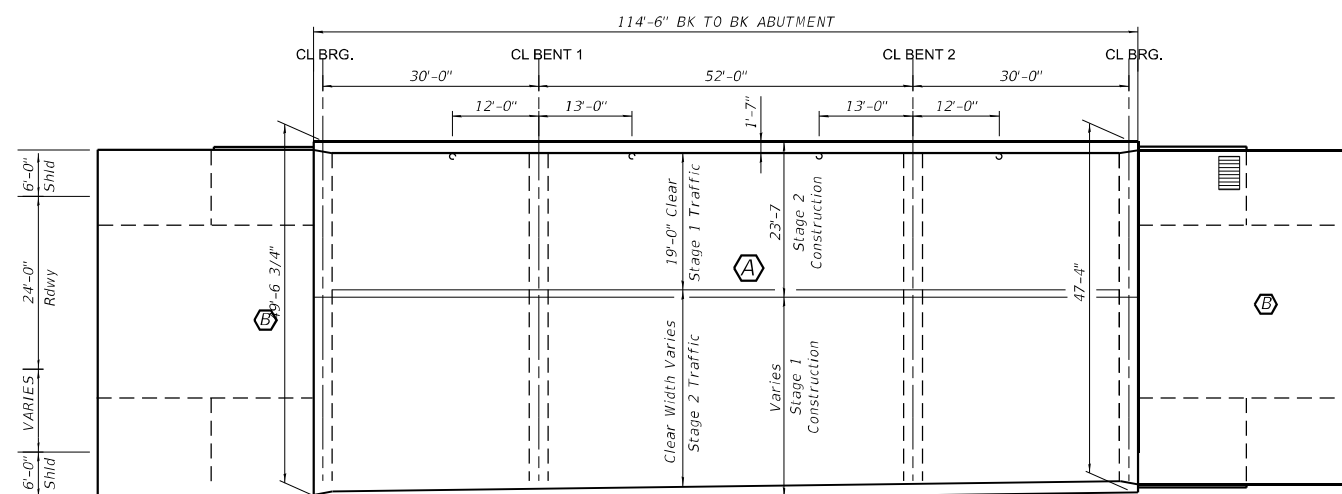
ITEM	UNIT	TOTAL
Protective Coat	Sq. Yd.	402
Reinforcement Bars, Epoxy Coated	Pound	42071
Bar Splicers	Each	253
Concrete Removal	Cu. Yd.	161
Deck Slab Repair (Partial)	Sq. Yd.	111
Concrete Superstructure	Cu. Yd.	187
Deck Slab Repair (Full Depth, Type I)	Sq. Yd.	22
Concrete Structures	Cu. Yd.	31
Inlets to be Reconstructed	Each	1



ELEVATION



PLAN SN 089-0059



PLAN SN 089-0058

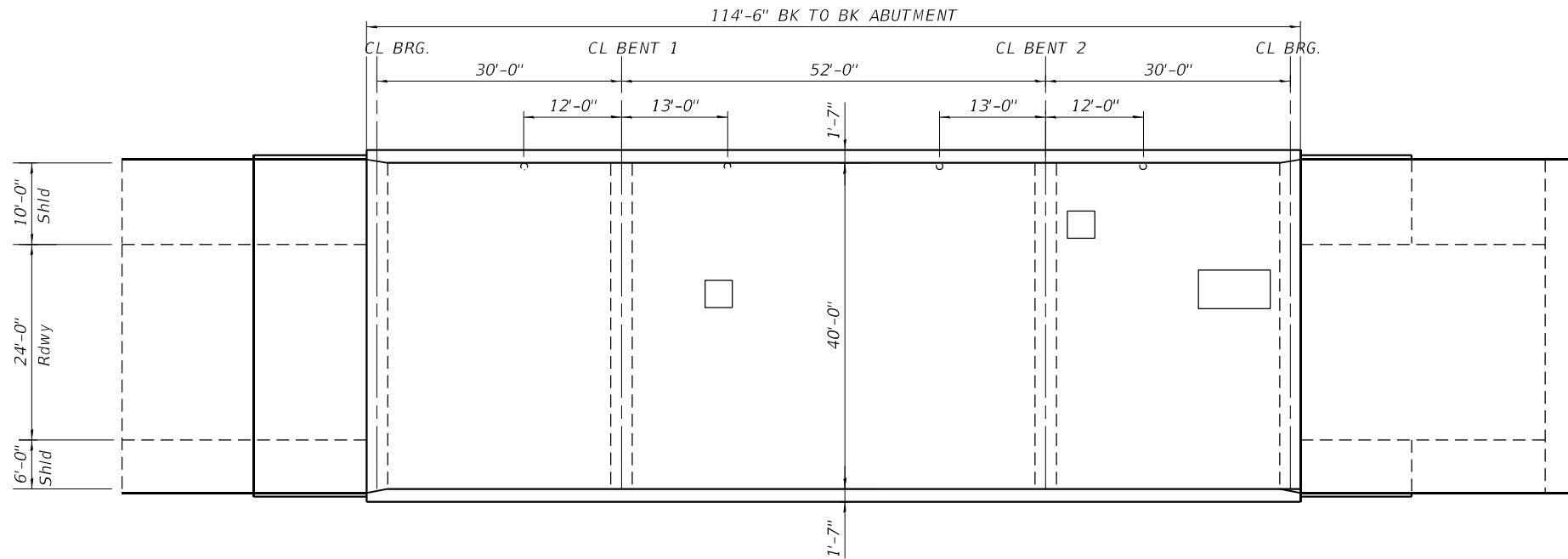
STATE OF ILLINOIS
DEPARTMENT OF TRANSPORTATION

SN 089-0058 & 0059 US 20 OVER SILVER CREEK
PLAN AND ELEVATION

SHEET S-1 OF S-6 SHEETS

F.A.P. RTE.	SECTION	COUNTY	TOTAL SHEETS	SHEET NO.
301	(177-4-2)BDR	STEPHENSON	19	9
SN 089-0058 & 0059			CONTRACT NO. 64S61	
ILLINOIS FED. AID PROJECT				

USER NAME =	DESIGNED -	REVISED -
PLOT SCALE =	CHECKED -	REVISED -
PLOT DATE =	DRAWN -	REVISED -
	CHECKED -	REVISED -



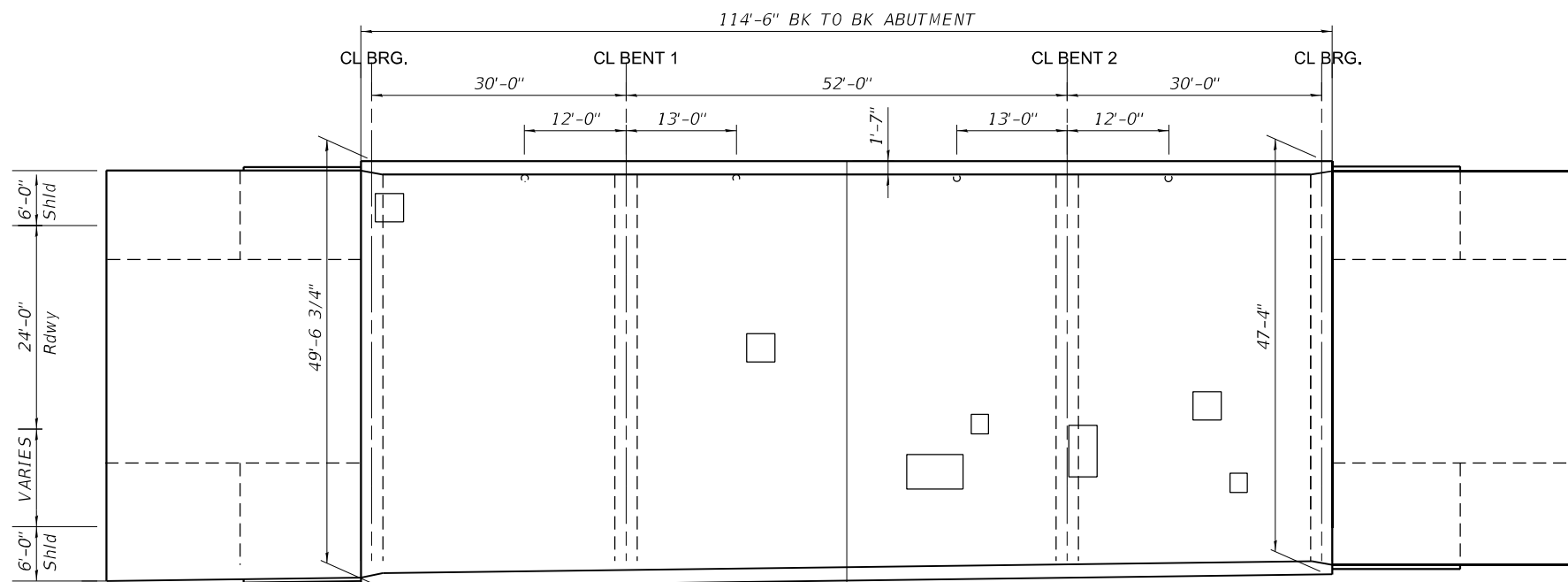
SN 089-0059

Legend

□ Deck Slab Repair (Partial Depth)

NOTES:
 PATCHES SHOWN ARE POTENTIAL AREAS OF DECK SLAB REPAIR.
 ACTUAL AREAS TO BE DETERMINED BY THE ENGINEER IN THE FIELD.

Date of Survey: 9/25/2023



SN 089-0058

MODEL: Default
 FILE NAME: \\kpf.com\dfs\Bridges\2300654 (WCO 7 US 20 over Silver Creek 64561)\02_Design (MS)\64561-1\0-Deck Repairs.dgn



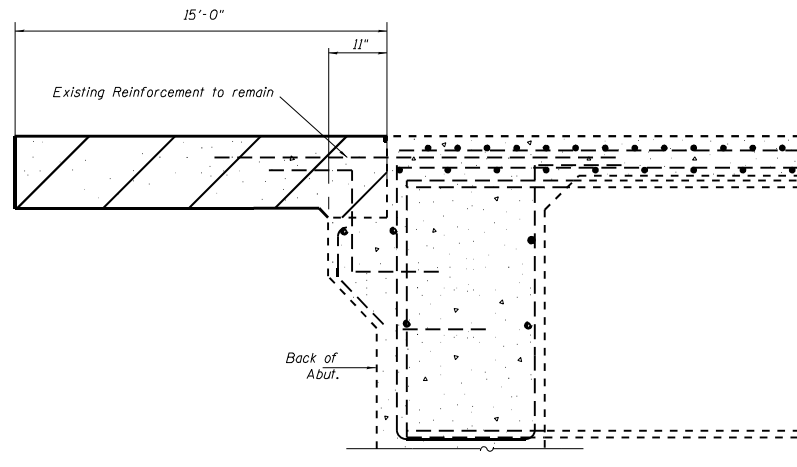
USER NAME =	DESIGNED -	REVISED -
PLOT SCALE =	CHECKED -	REVISED -
PLOT DATE =	DRAWN -	REVISED -
	CHECKED -	REVISED -

STATE OF ILLINOIS
 DEPARTMENT OF TRANSPORTATION

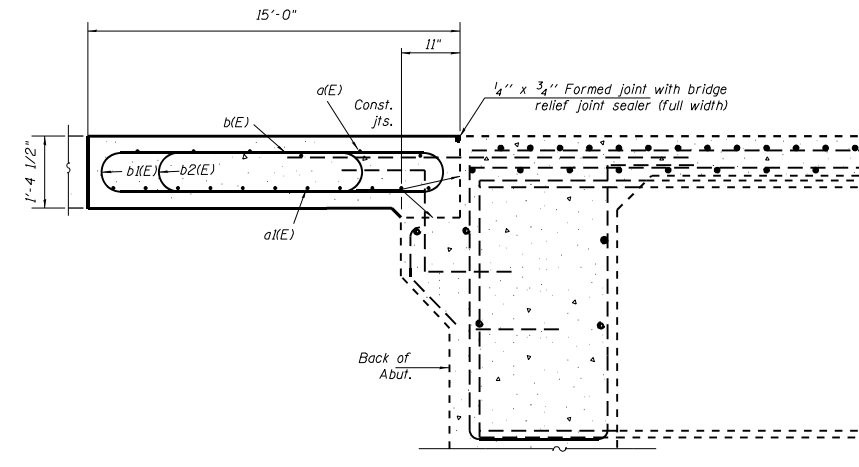
SN 089-0058 & 0059 US 20 OVER SILVER CREEK
 DECK REPAIRS

SHEET S-2 OF S-6 SHEETS

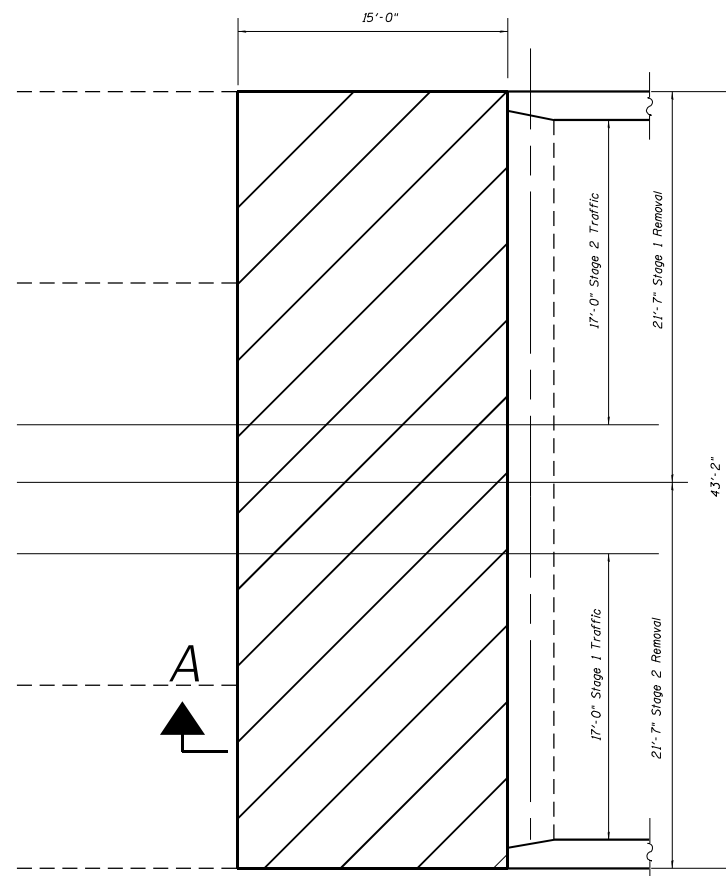
F.A.P. RTE.	SECTION	COUNTY	TOTAL SHEETS	SHEET NO.
301	(177-4-2)BDR	STEPHENSON	19	10
SN 089-0058 & 0059			CONTRACT NO. 64561	
ILLINOIS FED. AID PROJECT				



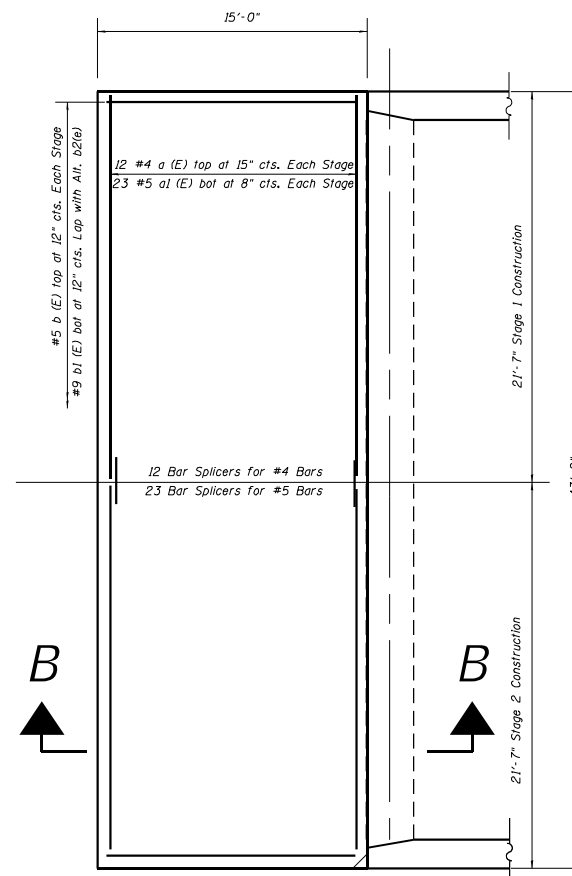
SECTION A-A



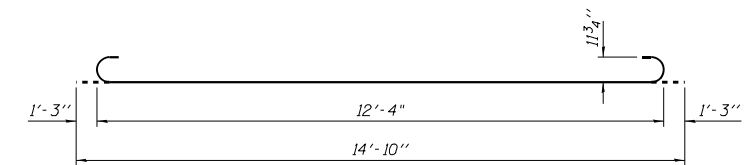
SECTION B-B



REMOVAL PLAN



REPLACEMENT PLAN



BAR $b_1(E)$

BILL OF MATERIAL

Bar	No.	Size	Length	Shape
a(E)	24	#4	21'-5"	—
a ₁ (E)	46	#5	21'-5"	—
b(E)	43	#4	14'-8"	—
b ₁ (E)	43	#9	14'-10"	U
b ₂ (E)	43	#9	14'-10"	U
Concrete Superstructure			Cu. Yd.	32
Concrete Removal			Cu. Yd.	28
Bar Splicers			Each	35
Reinforcement Bars, Epoxy Coated			Pound	6,355

MODEL: Default
 FILE NAME: \\kpff.com\dfs\B\p\p\2300654 (W\O 7 US 20 over Silver Creek 64561)\02_Design (MS)\64561-11-0059 Approach repairs.dgn



USER NAME =	DESIGNED -	REVISED -
PLOT SCALE =	CHECKED -	REVISED -
PLOT DATE =	DRAWN -	REVISED -
	CHECKED -	REVISED -

STATE OF ILLINOIS
 DEPARTMENT OF TRANSPORTATION

SN 089-0058 & 0059 US 20 OVER SILVER CREEK
 089-0059 WEST APPROACH REPAIRS

SHEET S-3 OF S-6 SHEETS

F.A.P. RTE.	SECTION	COUNTY	TOTAL SHEETS	SHEET NO.
301	(177-4-2)BDR	STEPHENSON	19	11
SN 089-0058 & 0059			CONTRACT NO. 64561	
ILLINOIS FED. AID PROJECT				

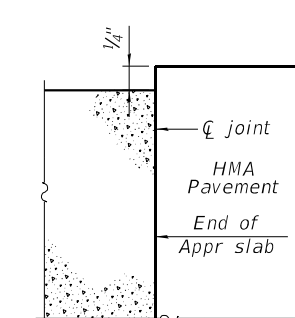
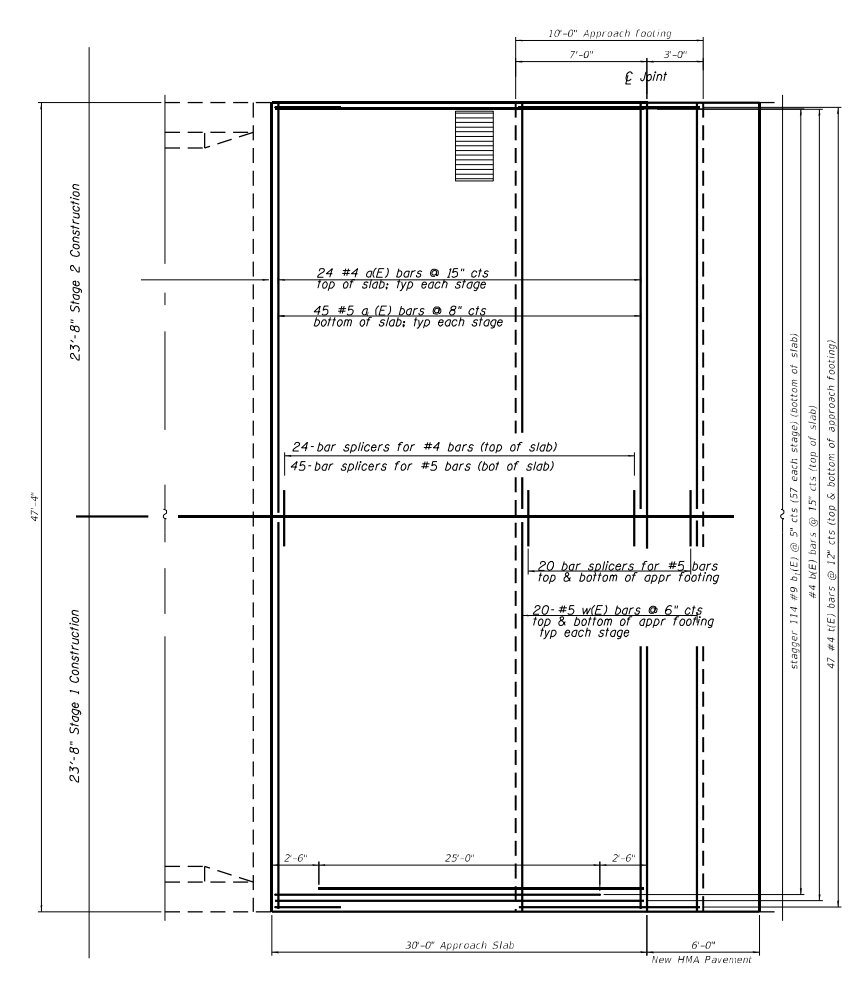
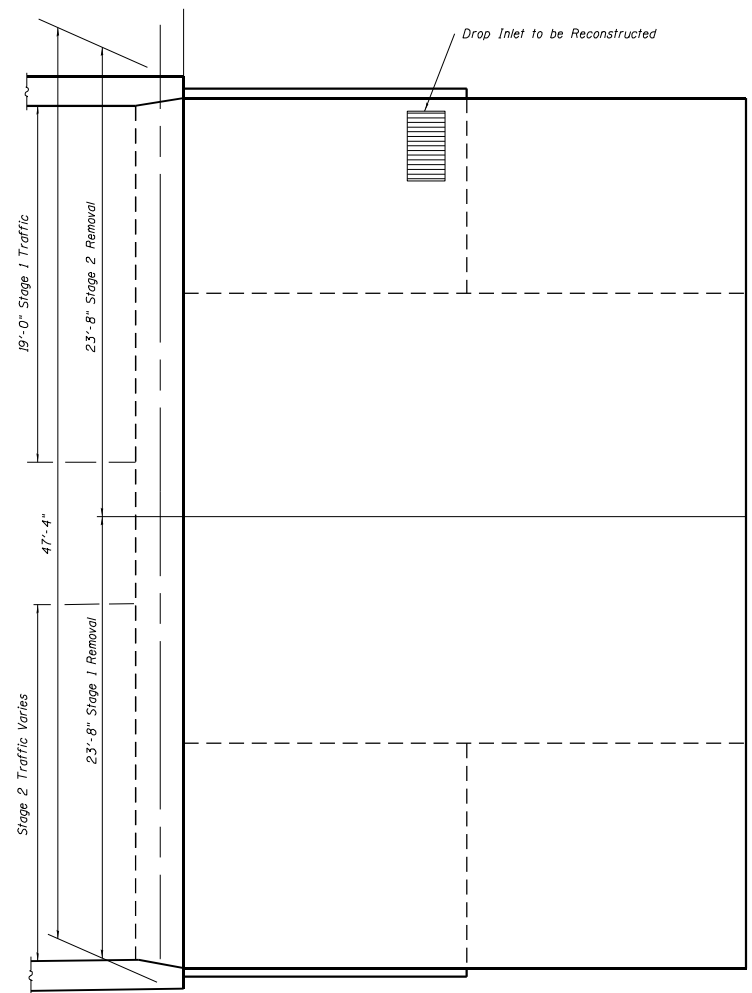
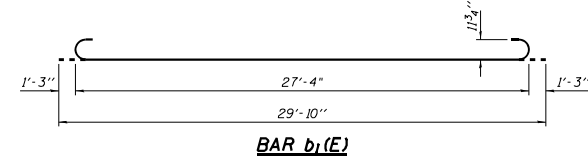
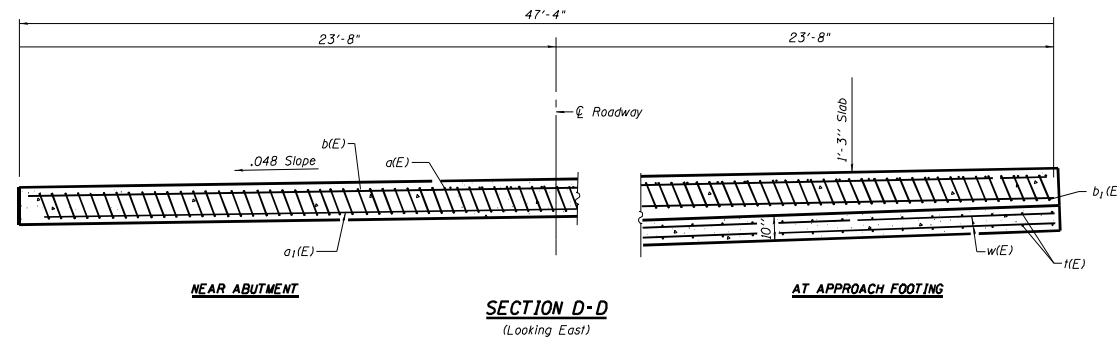
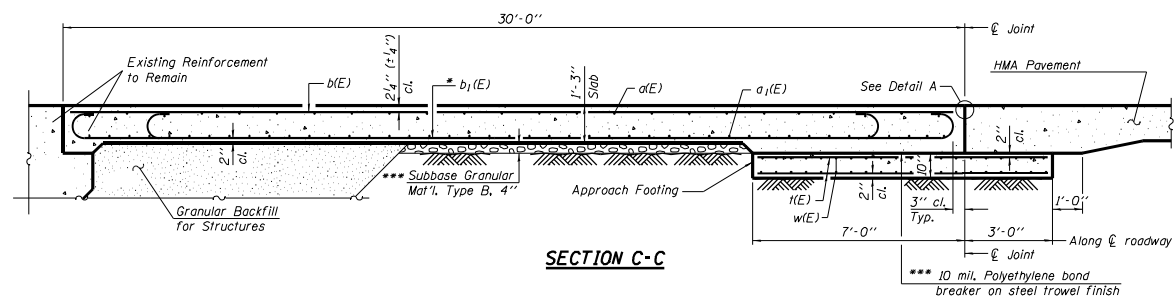
BILL OF MATERIAL

SN 089-0058 East Appr.

Bar	No.	Size	Length	Shape
a(E)	48	#4	23'-6"	—
a ₁ (E)	90	#5	23'-6"	—
b(E)	38	#4	29'-8"	—
b ₁ (E)	114	#9	29'-10"	⌋
w(E)	80	#5	23'-6"	—
t(E)	94	#4	9'-8"	—
Concrete Superstructure			Cu. Yd.	15
Concrete Structures			Cu. Yd.	74
Reinforcement Bars, Epoxy Coated			Pound	17,455
Concrete Removal			Cu. Yd.	68
Bar Splicers			Each	109

Notes:
 Approach slab concrete shall be paid for as Concrete Superstructure.
 Approach footing concrete shall be paid for as Concrete Structures.
 Reinforcement shall be paid for as Reinforcement Bars, Epoxy Coated.
 The approach footing maximum applied service bearing pressure (Q_{max}) = 2.0 ksf.
 For bar splicer details, see sheet 15 of 20.
 Cost of excavation for approach footing included with Concrete Structures.

* Tilt #9 b₁(E) bars as required to maintain clearance.
 *** Cost included with Concrete Superstructure.



FLEXIBLE PAVEMENT
 DETAIL A

MODEL: Default
 FILE NAME: \\kpf.com\dfs\Brdg\2300654 (WC 7 US 20 over Silver Creek 64561)\02_Approach Repairs.dgn

kpff
 1500 Sherman Ave, Suite 1020
 Evanston, IL 60201
 847-859-7790
 www.kpff.com

USER NAME =	DESIGNED -	REVISED -
PLOT SCALE =	CHECKED -	REVISED -
PLOT DATE =	DRAWN -	REVISED -
	CHECKED -	REVISED -

STATE OF ILLINOIS
 DEPARTMENT OF TRANSPORTATION

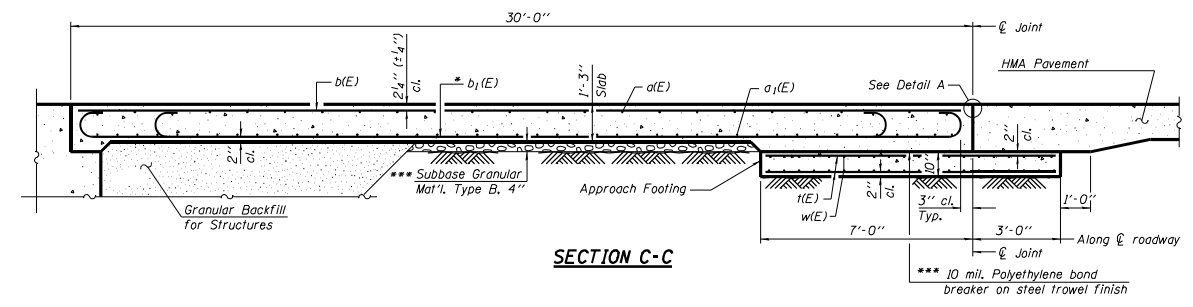
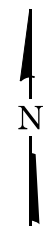
SN 089-0058 & 0059 US 20 OVER SILVER CREEK
 089-0058 EAST APPROACH REPLACEMENT

F.A.P. RTE. 301	SECTION (177-4-2)BDR	COUNTY STEPHENSON	TOTAL SHEETS 19	SHEET NO. 12
SN 089-0058 & 0059			CONTRACT NO. 64561	
ILLINOIS FED. AID PROJECT				

BILL OF MATERIAL

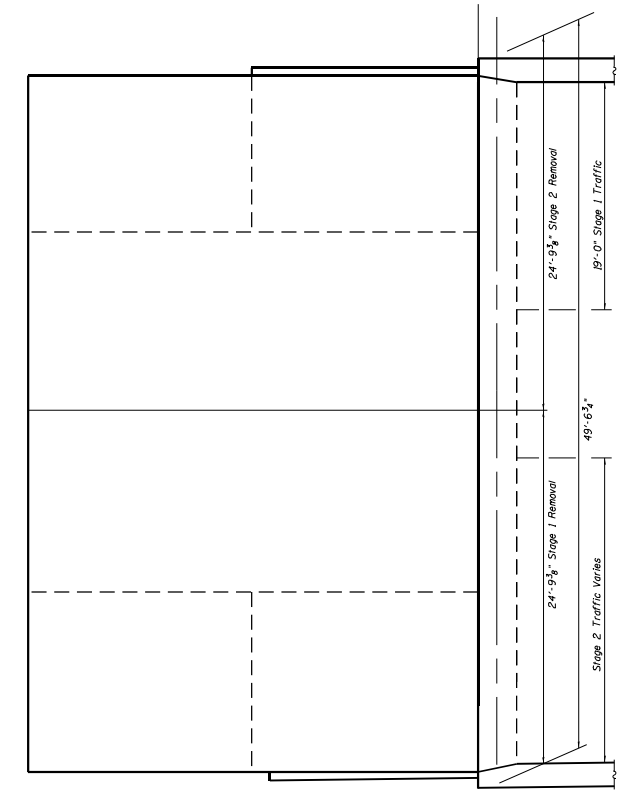
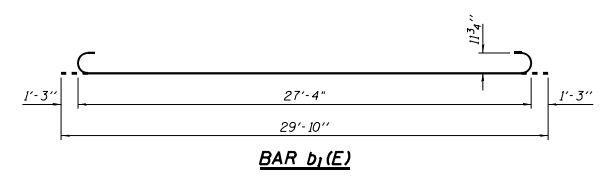
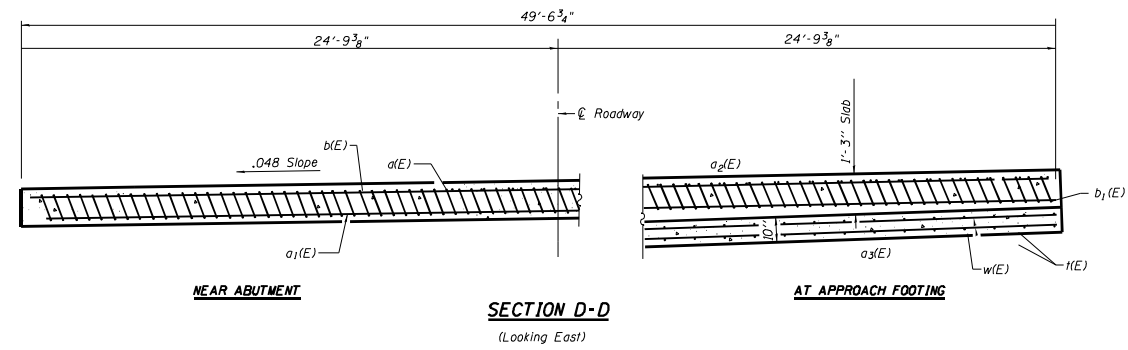
SN 089-0058 West Apr.

Bar	No.	Size	Length	Shape
a(E)	48	#4	24'-7"	—
a ₁ (E)	90	#5	24'-7"	—
b(E)	40	#4	29'-8"	—
b ₁ (E)	119	#9	29'-10"	—
w(E)	80	#5	24'-7"	—
t(E)	100	#4	9'-8"	—
Concrete Superstructure			Cu. Yd.	77
Concrete Structures			Cu. Yd.	16
Reinforcement Bars, Epoxy Coated			Pound	18,261
Concrete Removal			Cu. Yd.	68
Bar Splicers			Each	109

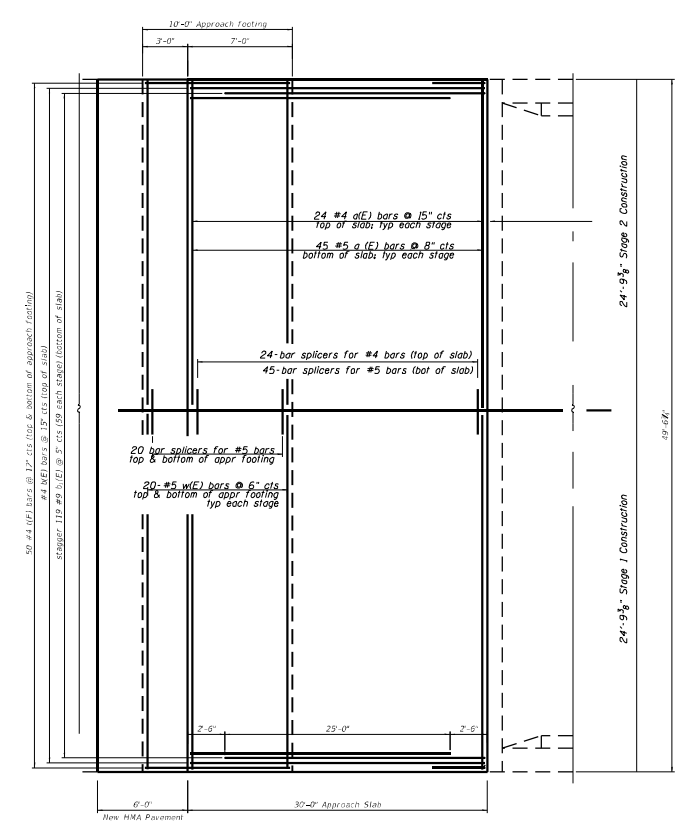


Notes:
 See sheet 12 of 20 for Detail A
 Approach slab concrete shall be paid for as Concrete Superstructure.
 Approach footing concrete shall be paid for as Concrete Structures.
 Reinforcement shall be paid for as Reinforcement Bars, Epoxy Coated.
 The approach footing maximum applied service bearing pressure (Omax) = 2.0 ksf.
 For bar splicer details, see sheet 15 of 20.
 Cost of excavation for approach footing included with Concrete Structures.

* Tilt #9 b₁(E) bars as required to maintain clearance.
 *** Cost included with Concrete Superstructure.



REMOVAL PLAN



REPLACEMENT PLAN

MODEL: Default
 FILE NAME: \\kpf.com\dfs\Brdg\2300654 (W) 7 US 20 over Silver Creek 64561\02_Design (MS)\64561-13 0058 West Approach Repairs.dgn



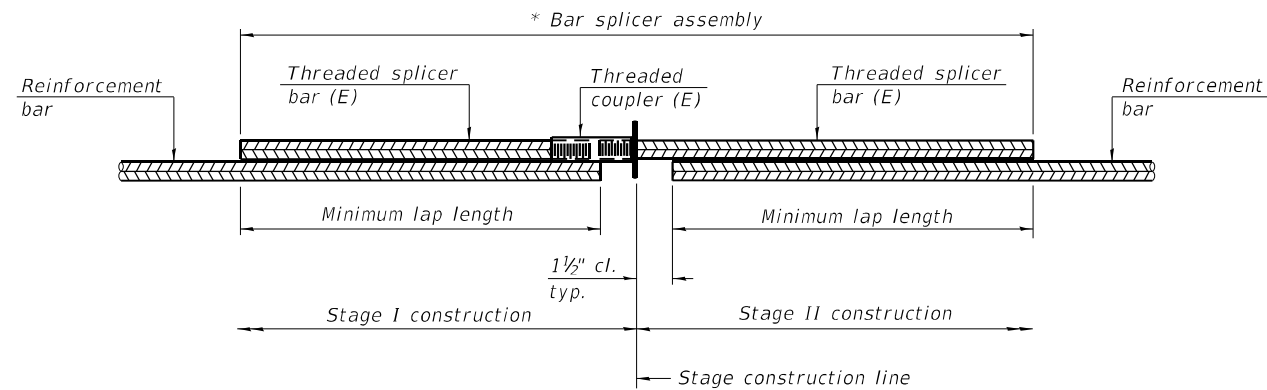
USER NAME =	DESIGNED -	REVISED -
PLOT SCALE =	CHECKED -	REVISED -
PLOT DATE =	DRAWN -	REVISED -
	CHECKED -	REVISED -

STATE OF ILLINOIS
 DEPARTMENT OF TRANSPORTATION

SN 089-0058 & 0059 US 20 OVER SILVER CREEK
 089-0058 WEST APPROACH REPLACEMENT

SHEET S-5 OF S-6 SHEETS

F.A.P. RTE. 301	SECTION (177-4-2)BDR	COUNTY STEPHENSON	TOTAL SHEETS 19	SHEET NO. 13
SN 089-0058 & 0059		CONTRACT NO. 64561		
ILLINOIS FED. AID PROJECT				

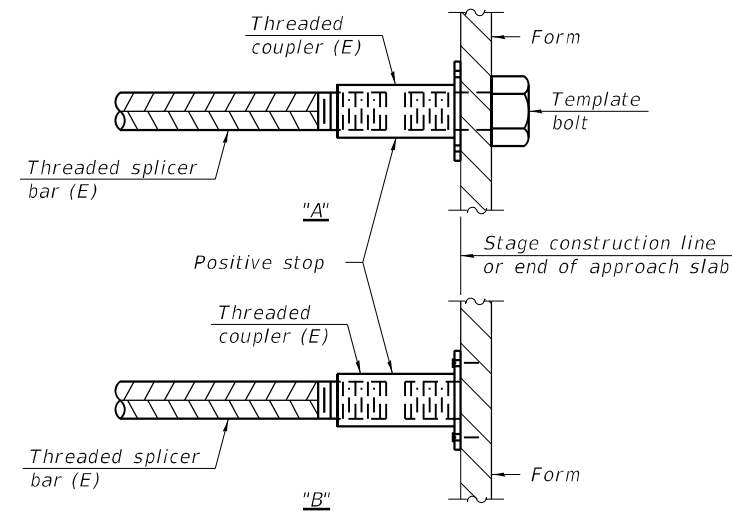


STANDARD BAR SPLICER ASSEMBLY PLAN
 (All components shall be provided from one supplier)

Threaded splicer bar length = min. lap length + 1 1/2" + thread length

* Epoxy not required on Bar Splicer Assembly components used in conjunction with black bars.

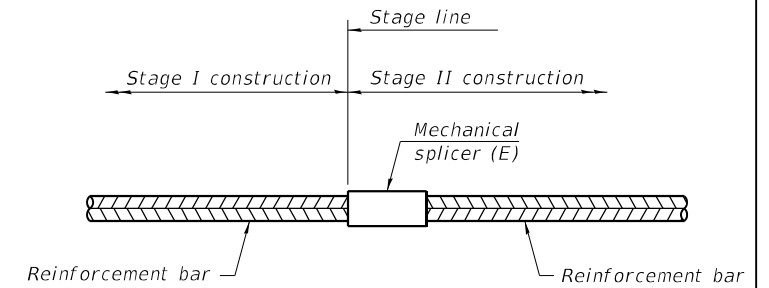
Location	Bar size	No. assemblies required	Minimum lap length
SN 089-0058	#5	170	3'-6"
SN 089-0058	#4	48	3'-0"
SN 089-0059	#5	23	3'-6"
SN 089-0059	#4	12	3'-0"



INSTALLATION AND SETTING METHODS

"A" : Set bar splicer assembly by means of a template bolt.
 "B" : Set bar splicer assembly by nailing to wood forms or cementing to steel forms.
 (E) : Indicates epoxy coating.

Notes:
 Splicer bars shall be deformed with threaded ends and have a minimum 60 ksi yield strength.
 All reinforcement shall be lapped and tied to the splicer bars.
 Bar splicer assemblies shall be epoxy coated according to the requirements for reinforcement bars. See Section 508 of the Standard Specifications.
 See approved list of bar splicer assemblies and mechanical splicers for alternatives.



STANDARD MECHANICAL SPLICER

Location	Bar size	No. assemblies required

MODEL: Default
 FILE NAME: \\kpf.com\dfs\Bridges\2300654 (WCO 7 US 20 over Silver Creek 64561)\02_Design (MS)\64561-14 -Bar Splices.dgn
 2/26/2024 3:55:57 PM



USER NAME =	DESIGNED -	REVISED -
PLOT SCALE =	CHECKED -	REVISED -
PLOT DATE =	DRAWN -	REVISED -
	CHECKED -	REVISED -

STATE OF ILLINOIS
 DEPARTMENT OF TRANSPORTATION

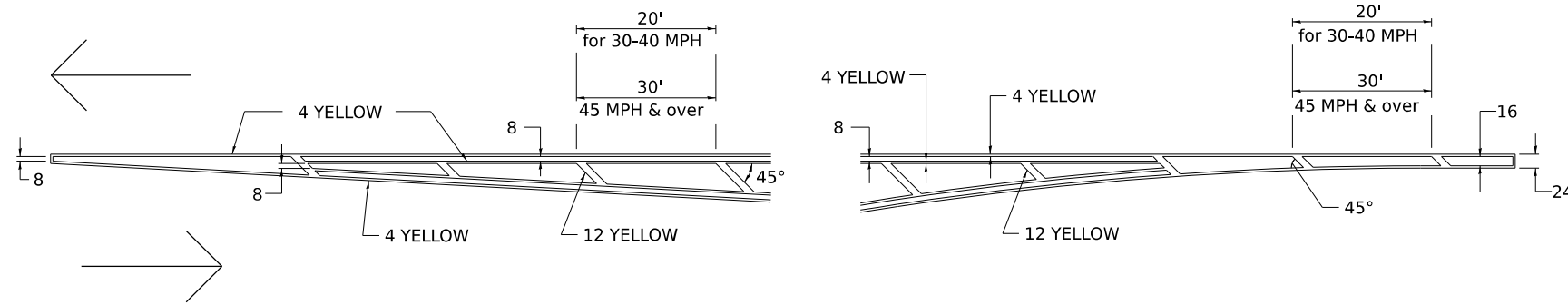
SN 089-0058 & 0059 US 20 OVER SILVER CREEK
 BAR SPLICERS

SHEET S-6 OF S-6 SHEETS

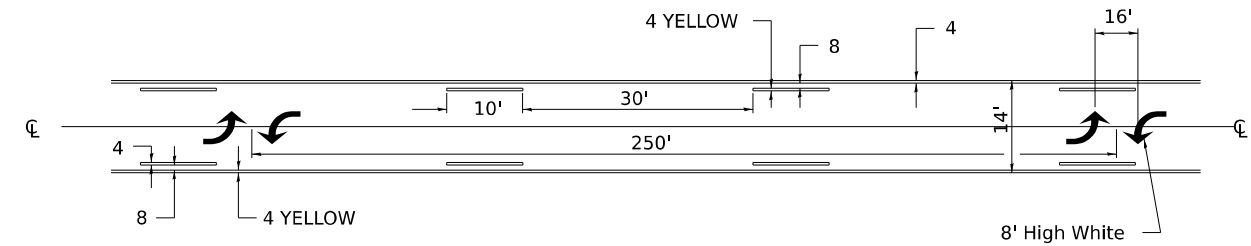
F.A.P. RTE.	SECTION	COUNTY	TOTAL SHEETS	SHEET NO.
301	(177-4-2)BDR	STEPHENSON	19	14
SN 089-0058 & 0059		CONTRACT NO. 64561		
ILLINOIS FED. AID PROJECT				

TYPICAL PAVEMENT MARKINGS

TYPICAL PAVEMENT MARKING FOR FLUSH MEDIAN AT LEFT TURN LANE

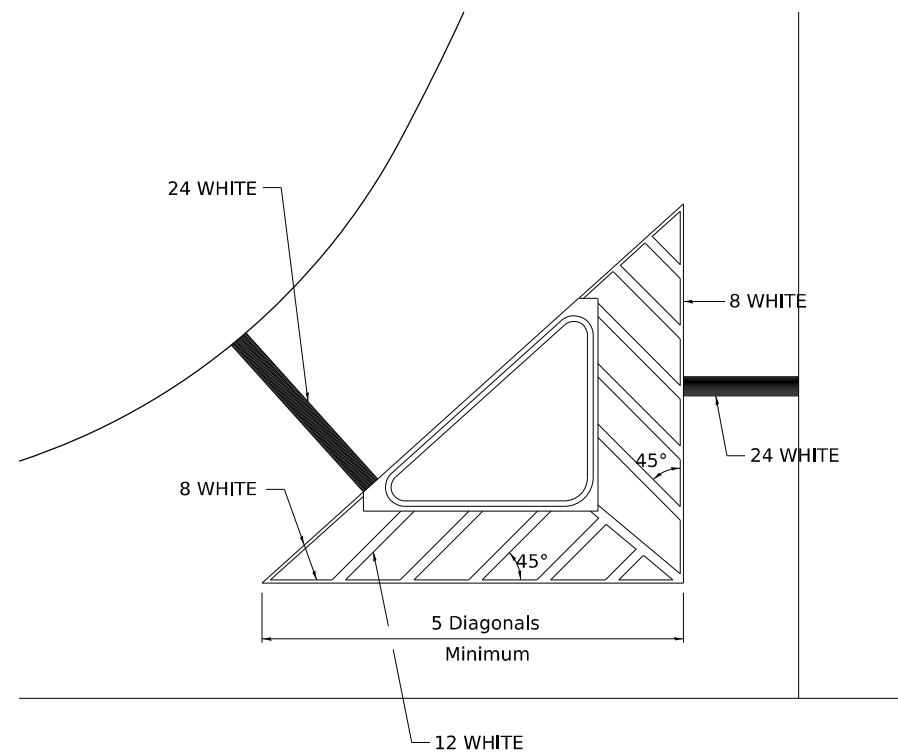


MEDIAN PAVEMENT MARKING



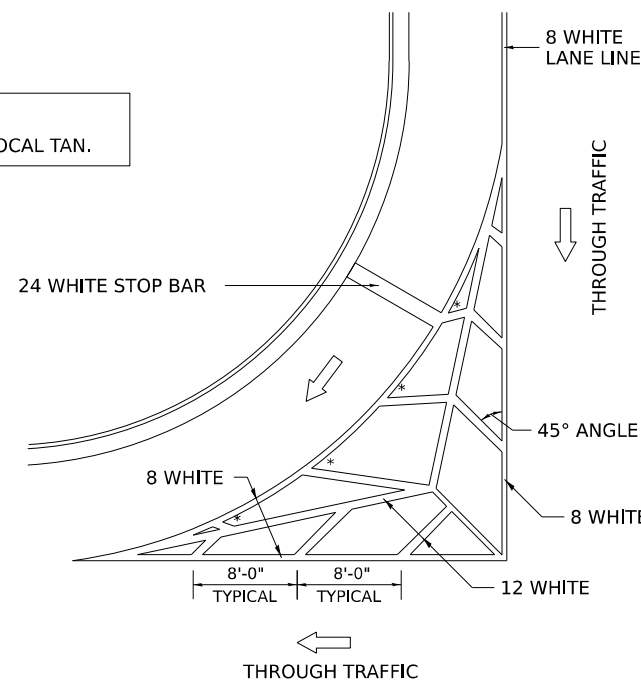
** ALL DIMENSIONS ARE IN INCHES UNLESS OTHERWISE NOTED.

TYPICAL ISLAND OFFSET SHOULDER WIDTH



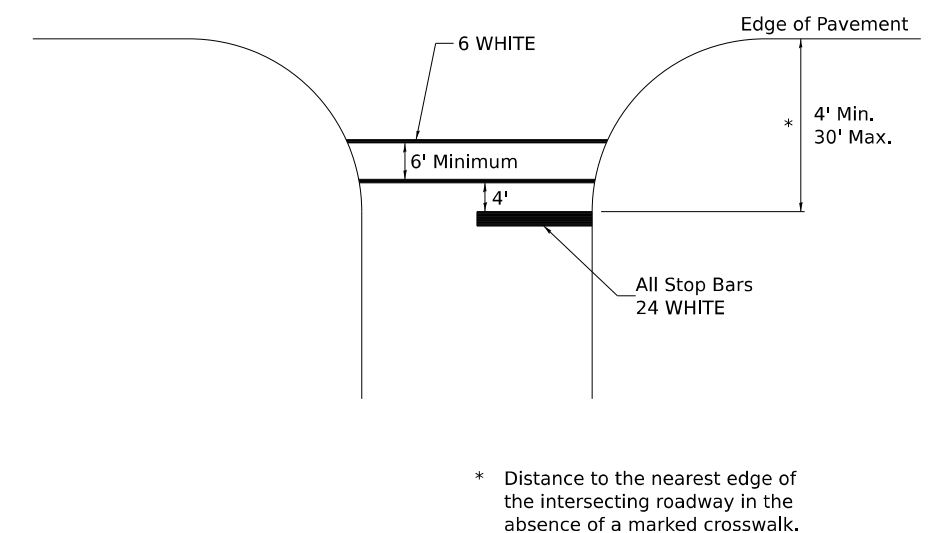
TYPICAL MARKING FOR PAINTED ISLANDS

NOTE:
* 45° TO LOCAL TAN.



STANDARD CROSSWALK MARKING

See Schedules for Locations



* Distance to the nearest edge of the intersecting roadway in the absence of a marked crosswalk.

MODEL: 41ptLsheet
FILE NAME: D:\Info\2023standard
PLOT DATE: 9/20/2023

USER NAME = IDOT\District 2	DESIGNED -	REVISED - 6-27-14
	DRAWN -	REVISED - 3-05-12
PLOT SCALE = 0.063 1/in.	CHECKED -	REVISED -
PLOT DATE = 9/20/2023	DATE -	REVISED -

STATE OF ILLINOIS
DEPARTMENT OF TRANSPORTATION

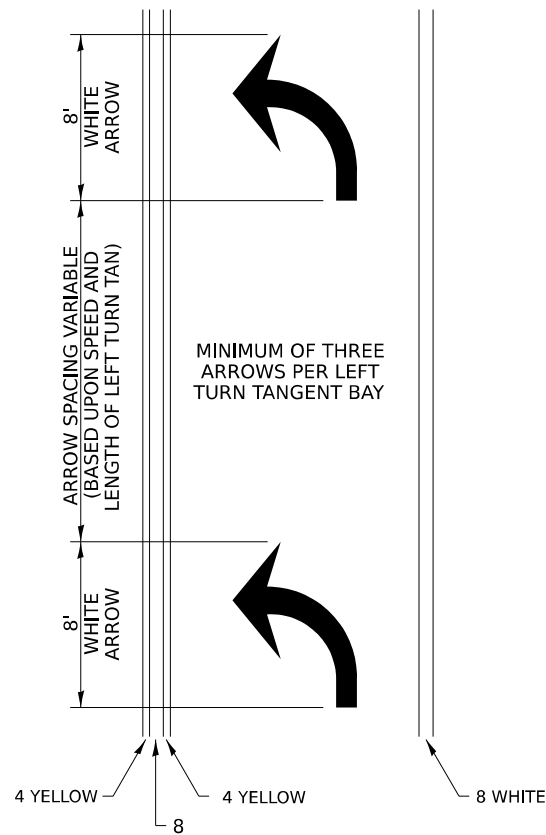
REGION 2 / DISTRICT 2 STANDARD

SCALE: NTS SHEET OF SHEETS STA. TO STA.

F.A. RTE.	SECTION	COUNTY	TOTAL SHEETS	SHEET NO.
301	(177-4-2)BDR	STEPHENSON	19	15
CONTRACT NO. 64S61				
ILLINOIS FED. AID PROJECT				

TYPICAL PAVEMENT MARKINGS

ARROW LAYOUT

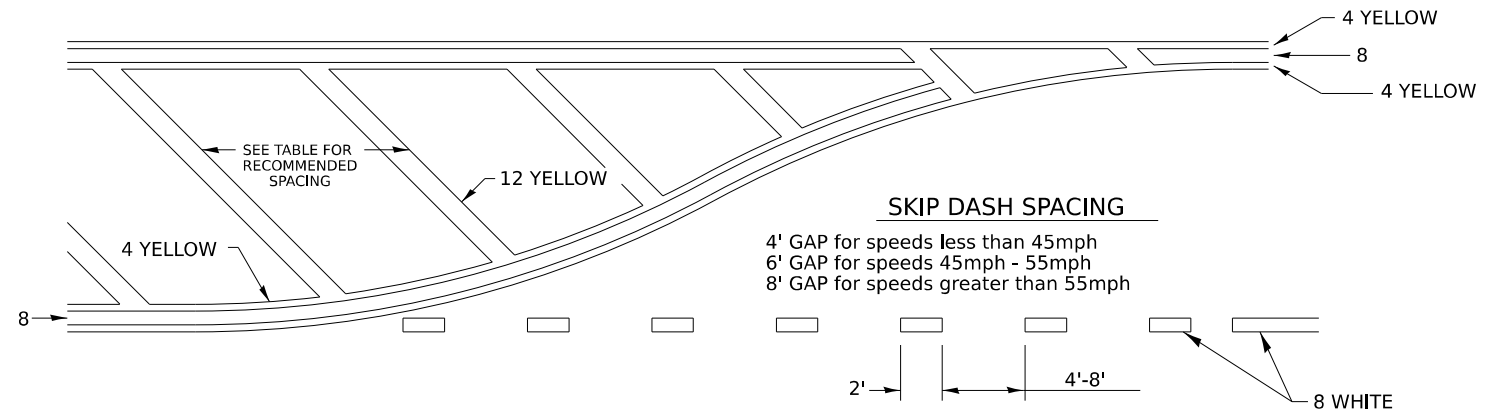


SYMBOLS

- ◀ ONE-WAY AMBER MARKER
- ◁ ONE-WAY CRYSTAL MARKER
- ◆ TWO-WAY AMBER MARKER

ALL DIMENSIONS ARE IN INCHES UNLESS OTHERWISE NOTED.

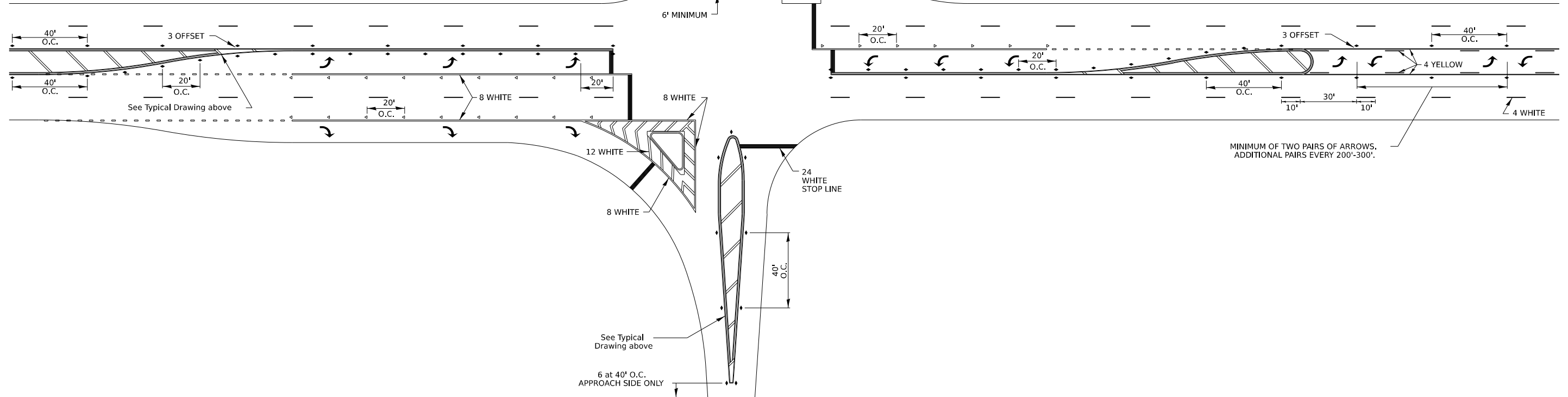
TYPICAL PAVEMENT MARKING FOR FLUSH MEDIAN



RECOMMENDED SPACING BETWEEN DIAGONALS (IN FEET)

Speed Limit Range	Continuous Median Area	Intersection Channelization	Objects (Islands)
less than 30MPH	50'	15'	10'
30-40MPH	75'	20'	15'
45MPH & over	75'	30'	20'

NOTE: if the spacing recommended in the Table does not permit at least five diagonal lines in the area being marked, the spacing from the next lowest speed range should be used. The recommended spacing is measured parallel to the pavement center line.



MODEL: 41pt_Lsheet2
 PLOT DATE: 9/20/2023
 PLOT SCALE: 0.063 1/16"

USER NAME = IDOT/District 2	DESIGNED -	REVISED - 6-27-14
	DRAWN -	REVISED - 3-05-12
PLOT SCALE = 0.063 1/16"	CHECKED -	REVISED -
PLOT DATE = 9/20/2023	DATE -	REVISED -

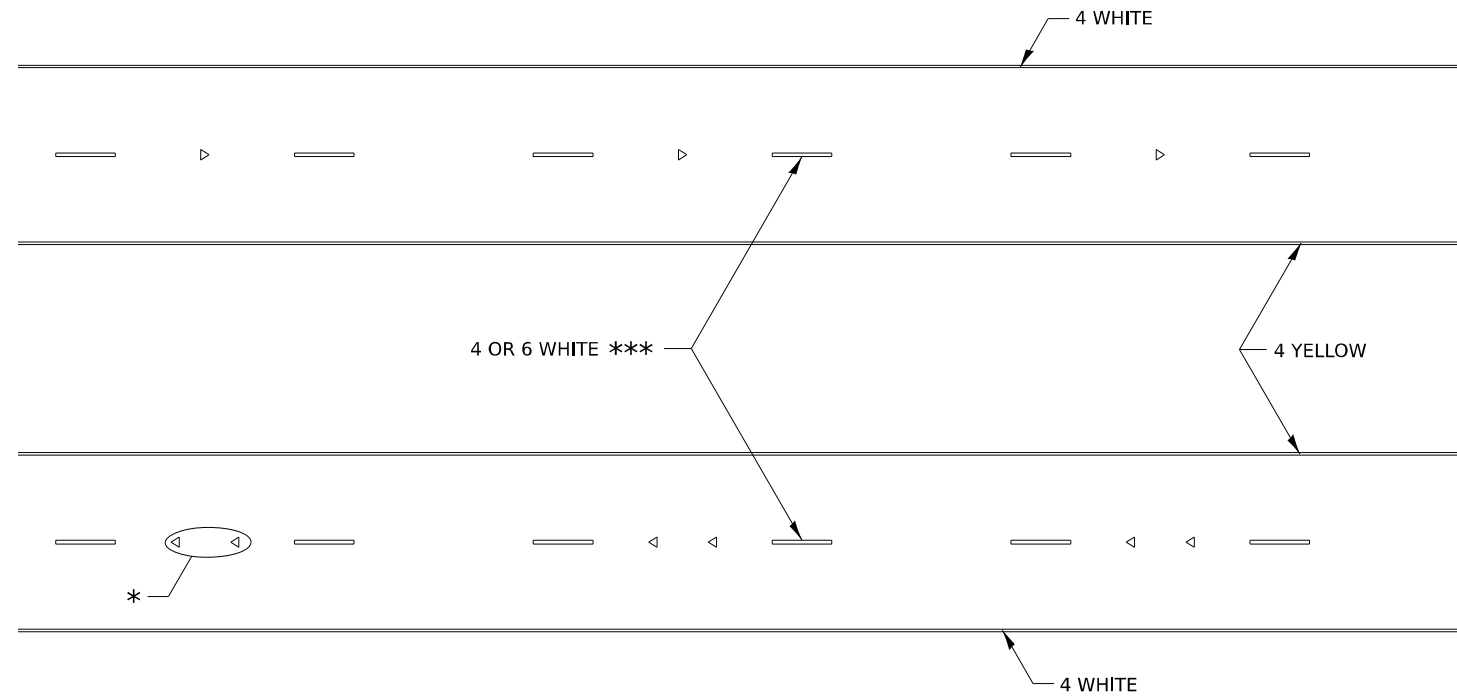
STATE OF ILLINOIS
DEPARTMENT OF TRANSPORTATION

REGION 2 / DISTRICT 2 STANDARD

SCALE: NTS SHEET OF SHEETS STA. TO STA.

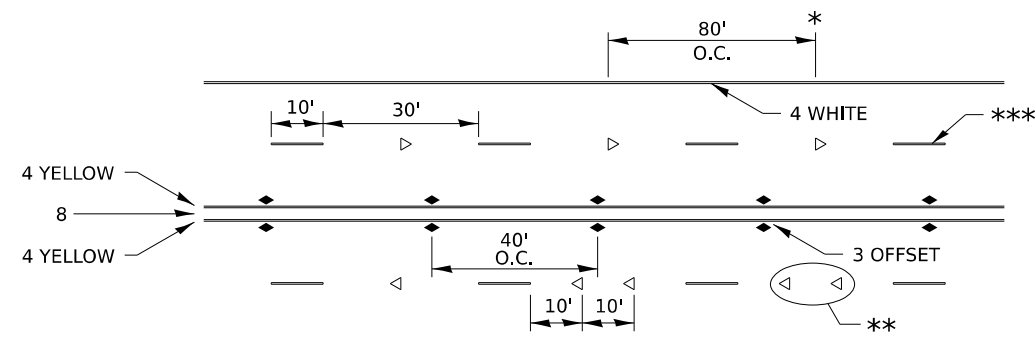
F.A. RTE.	SECTION	COUNTY	TOTAL SHEETS	SHEET NO.
301	(177-4-2)BDR	STEPHENSON	19	16
CONTRACT NO. 64S61				
ILLINOIS FED. AID PROJECT				

TYPICAL PAVEMENT MARKINGS



* SEE HIGHWAY STANDARD 781001 FOR SPACING DETAILS.
USE DOUBLE MARKERS WHEN ADT ≥ 20,000.

MULTI-LANE / DIVIDED



* REDUCE TO 40' O.C. ON CURVES WHERE ADVISORY SPEEDS ARE 10 MPH LOWER THAN POSTED SPEEDS.

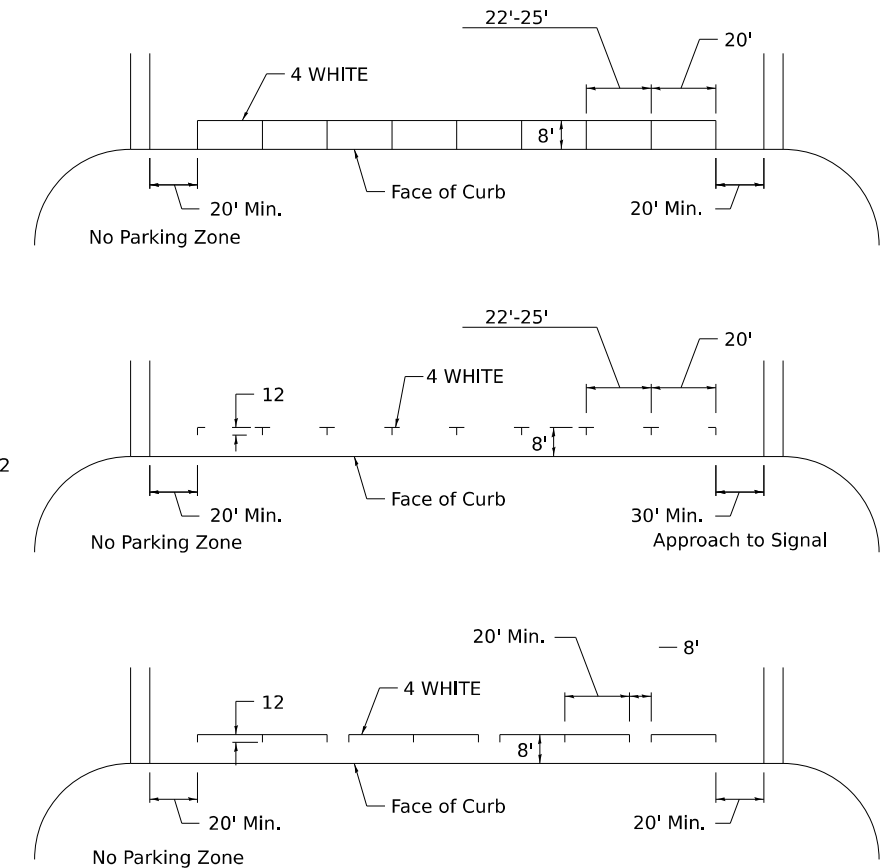
** USE DOUBLE MARKERS WHEN ADT ≥ 20,000

*** CENTERLINE SKIP DASH PAVEMENT MARKING SPEED LIMIT LESS THAN 40 MPH USE 4" LINE. SPEED LIMIT 40 MPH AND OVER USE 6" LINE.

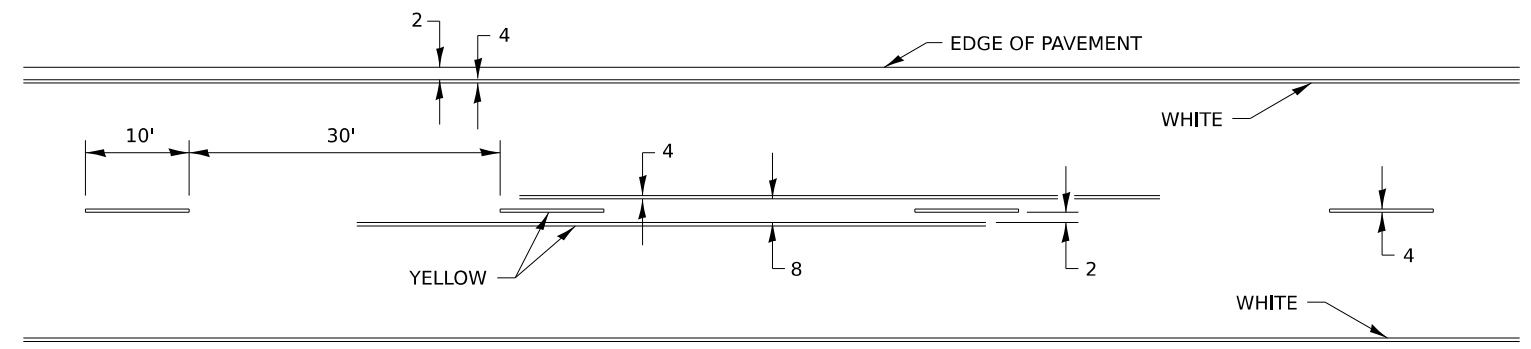
MULTI-LANE / UNDIVIDED & ONE WAY

(FOR MULTI-LANE UNDIVIDED HIGHWAYS USE THIS
DETAIL NOT HIGHWAY STANDARD 781001)

TYPICAL PARKING SPACING



TYPICAL PAVEMENT MARKING FOR TWO LANE SECTION – NO PASSING ZONES



MODEL: 41pt_Lsheet3
FILE NAME: Detail 2 Standard
PLOT DATE: 9/20/2023

USER NAME = IDOT/District 2	DESIGNED -	REVISED - 6-27-14
	DRAWN -	REVISED - 8-27-13
PLOT SCALE = 0.063 1/16"	CHECKED -	REVISED - 11-28-12
PLOT DATE = 9/20/2023	DATE -	REVISED -

STATE OF ILLINOIS
DEPARTMENT OF TRANSPORTATION

REGION 2 / DISTRICT 2 STANDARD

SCALE: NTS SHEET OF SHEETS STA. TO STA.

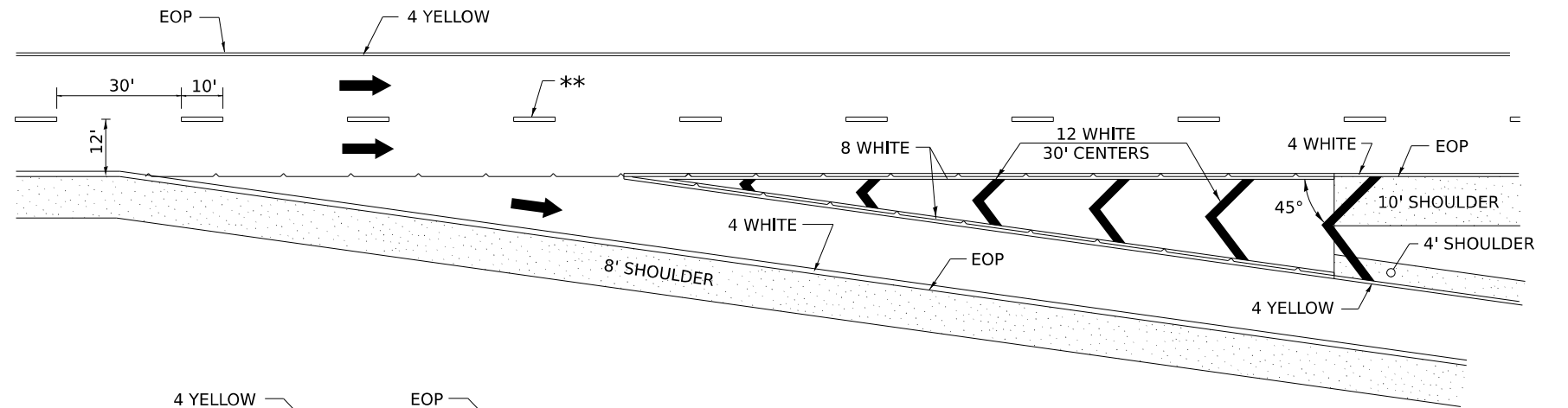
F.A. RTE.	SECTION	COUNTY	TOTAL SHEETS	SHEET NO.
301	(177-4-2)BDR	STEPHENSON	19	17
CONTRACT NO.			64561	
ILLINOIS FED. AID PROJECT				

TYPICAL PAVEMENT MARKINGS

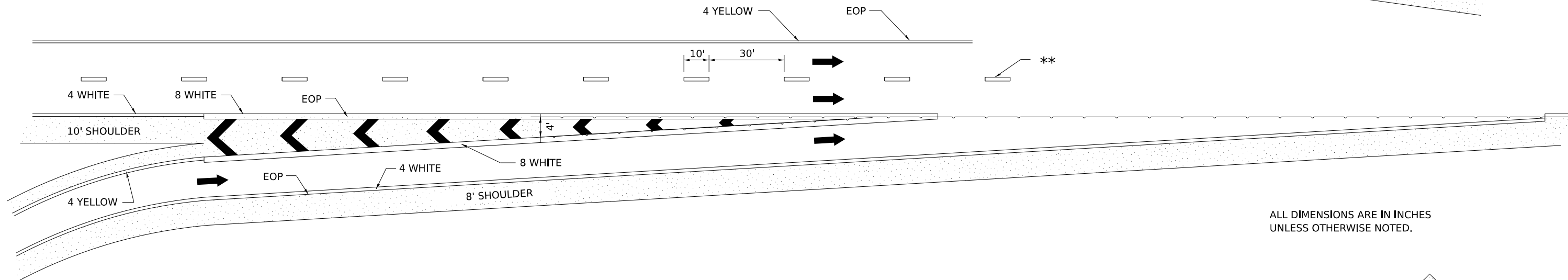
** 6" WHITE ON INTERSTATES, WHERE THE SPPED LIMIT IS 65 MPH, OR WHEN DIRECTED BY THE ENGINEER.
4" WIDE AT ALL OTHER LOCATIONS.

NOTE: GORE HATCHING PLACED ONLY WHEN SCHEDULED IN THE PLANS

EXIT RAMP

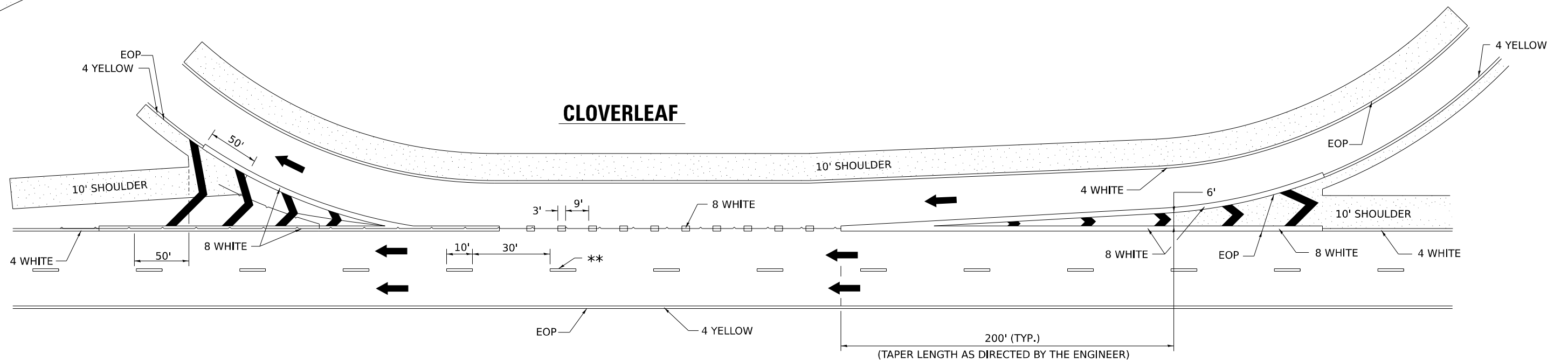


ENTRANCE RAMP



ALL DIMENSIONS ARE IN INCHES UNLESS OTHERWISE NOTED.

CLOVERLEAF



MODEL: 41pt_Lsheet.dwg
PLOT DATE: 9/20/2023

USER NAME = IDOT/District 2	DESIGNED -	REVISED - 9-15-23
	DRAWN -	REVISED - 8-27-13
PLOT SCALE = 0.063 1/in.	CHECKED -	REVISED - 10-18-11
PLOT DATE = 9/20/2023	DATE -	REVISED -

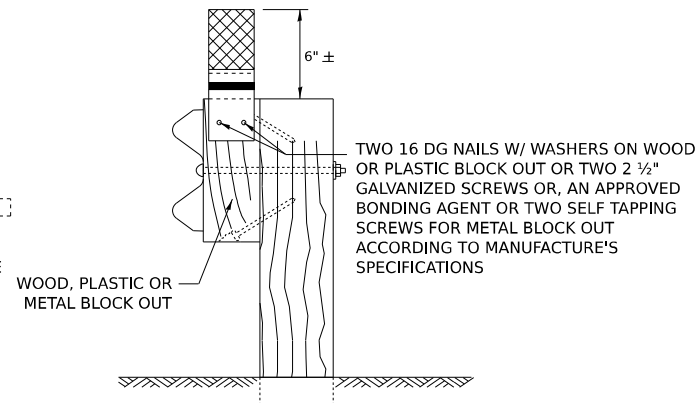
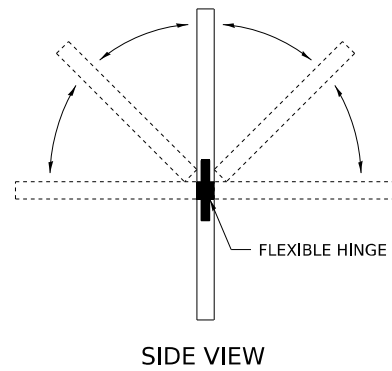
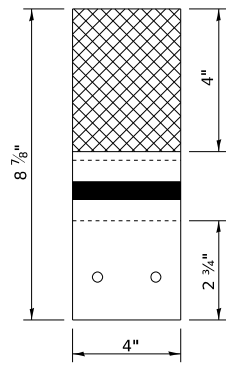
STATE OF ILLINOIS
DEPARTMENT OF TRANSPORTATION

REGION 2 / DISTRICT 2 STANDARD

SCALE: NTS SHEET OF SHEETS STA. TO STA.

F.A.P. RTE. 301	SECTION (177-4-2)BDR	COUNTY STEPHENSON	TOTAL SHEETS 19	SHEET NO. 18
CONTRACT NO. 64S61				
ILLINOIS FED. AID PROJECT				

GUARDRAIL AND BARRIER WALL REFLECTORS, TYPE C (SPECIAL)

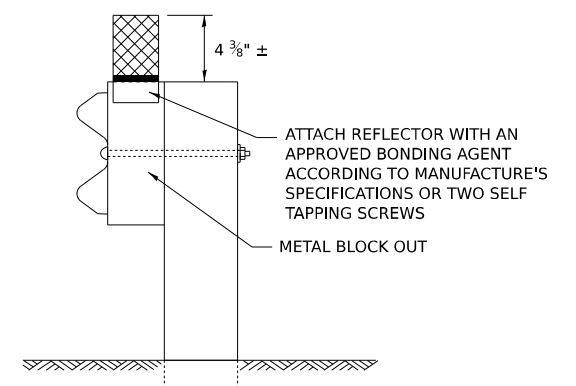
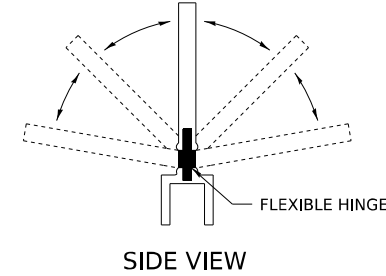
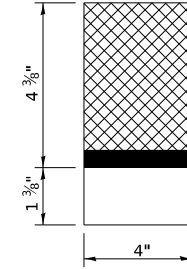


MOUNTED ON A WOOD OR PASTIC GUARDRAIL BLOCK OUT

REFLECTORS SHALL BE MOUNTED DIRECTLY TO WOOD OR PLASTIC BLOCK OUTS.

REFLECTORS MOUNTED ON WOODEN OR PLASTIC BLOCK OUT SHALL BE MOUNTED USING TWO 16 DG NAILS AND TWO 3/16" WASHERS OR TWO 2 1/2" GALVANIZED SCREWS WITH WASHERS.

REFLECTORS MOUNTED ON WOOD OR PLASTIC GUARDRAIL BLOCK OUT



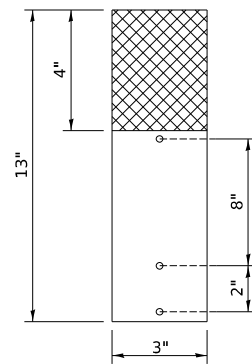
MOUNTED ON A METAL GUARDRAIL BLOCK OUT

REFLECTORS SHALL BE MOUNTED DIRECTLY TO METAL BLOCK OUT.

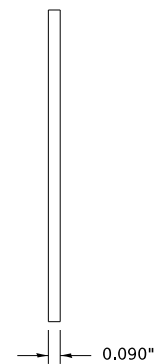
REFLECTORS MOUNTED ON METAL BLOCK OUT SHALL BE MOUNTED USING AN APPROVED BONDING AGENT PER THE MANUFACTURE'S SPECIFICATIONS OR TWO SELF TAPPING GALVANIZED SCREWS WITH WASHERS.

REFLECTORS MOUNTED ON METAL GUARDRAIL BLOCK OUT

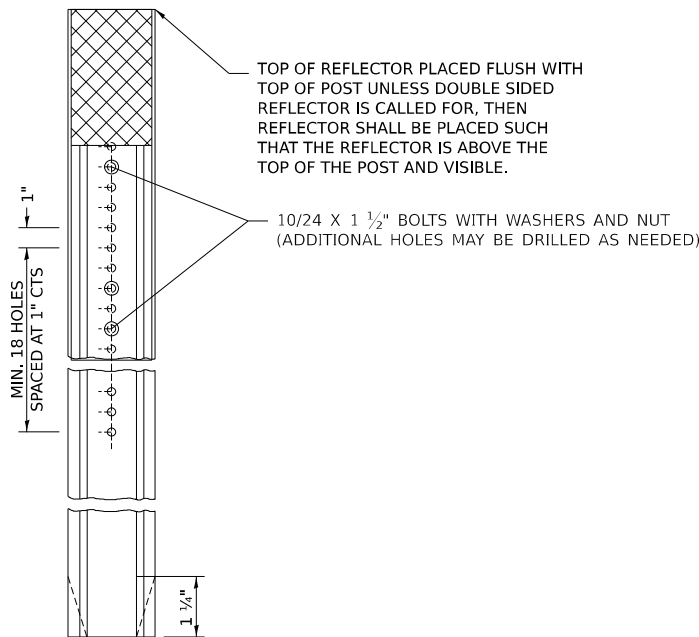
STRAIGHT GUARDRAIL / DELINEATOR REFLECTOR



SIDE VIEW



ADDITIONAL SHEETING MAY BE ADDED AS NEEDED FOR TURN AROUNDS AS SHOWN IN THE PLANS



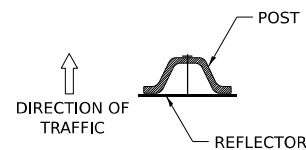
TOP OF REFLECTOR PLACED FLUSH WITH TOP OF POST UNLESS DOUBLE SIDED REFLECTOR IS CALLED FOR, THEN REFLECTOR SHALL BE PLACED SUCH THAT THE REFLECTOR IS ABOVE THE TOP OF THE POST AND VISIBLE.

10/24 X 1 1/2" BOLTS WITH WASHERS AND NUT (ADDITIONAL HOLES MAY BE DRILLED AS NEEDED)

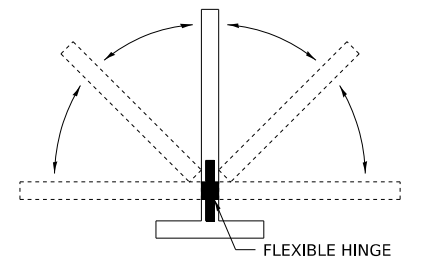
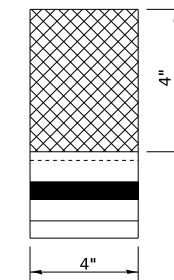
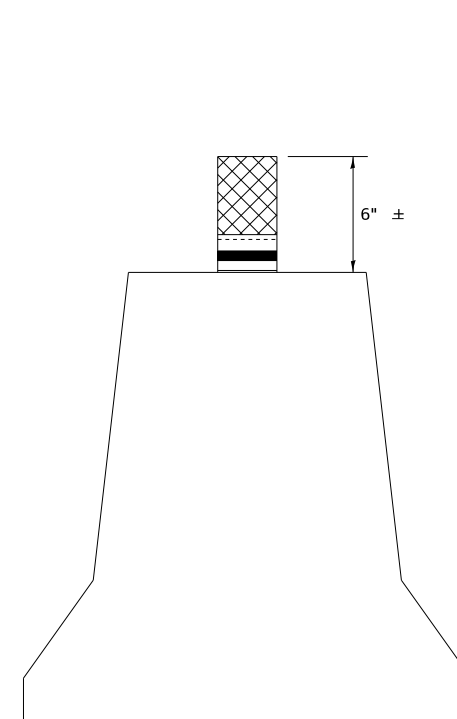
MOUNTED ON A DELINEATOR POST

REFLECTORS MAY BE MOUNTED TO DELINEATOR POST USING TWO 10/24 X 1 1/2" BOLTS WITH NUTS AND WASHERS.

ADDITIONAL HOLES SHALL BE DRILLED IN THE REFLECTORS AS SHOWN ABOVE.



DELINEATORS SHALL BE INSTALLED ACCORDING TO STANDARD 635001 EXCEPT THAT THE POST SHALL BE ROTATED 180°. THE POST WILL HAVE THE WIDE SIDE FACING TRAFFIC AND THE REFLECTOR ATTACHECD AS SHOWN ABOVE.



SIDE VIEW

REFLECTORS MOUNTED ON BARRIER WALL

NOTE:

REFLECTORS SHALL BE PAID FOR AT THE CONTRACT UNIT PRICE PER EACH FOR GUARDRAIL REFLECTORS, TYPE C (SPECIAL), WHICH PRICE SHALL ALSO INCLUDE SCREWS/NAILS, WASHERS OR AN APPROVED BONDING AGENT.

REFLECTORS INSTALLED ON TWO LANE ROADS SHALL BE DOUBLE SIDED AND BOTH SIDES SHALL BE CRYSTAL.

REFLECTORS INSTALLED ON CENTER BARRIER SHALL BE DOUBLE SIDE AND BOTH SIDES SHALL BE AMBER.

REFLECTORS INSTALLED ON DIVIDED HIGHWAYS SHALL BE SINGLE SIDED CRYSTAL.

SPACING FOR REFLECTORS SHALL BE ACCORDING TO STANDARD 782006 UNLESS OTHERWISE NOTED IN THE PLANS.

MODEL: 55p1
FILE NAME: District 2 Standard
PLOT DATE: 9/20/2023

USER NAME = IDOT/District 2	DESIGNED -	REVISED - 4-27-23
	DRAWN -	REVISED - 6-21-21
PLOT SCALE = 0.063 1/16"	CHECKED -	REVISED -
PLOT DATE = 9/20/2023	DATE -	REVISED -

STATE OF ILLINOIS
DEPARTMENT OF TRANSPORTATION

REGION 2 / DISTRICT 2 STANDARD

SCALE: NTS SHEET OF SHEETS STA. TO STA.

F.A.P RTE. 301	SECTION (177-4-2)BDR	COUNTY STEPHENSON	TOTAL SHEETS 19	SHEET NO. 19
CONTRACT NO. 64S61			ILLINOIS FED. AID PROJECT	