

STATE OF ILLINOIS  
DEPARTMENT OF TRANSPORTATION

F.A.S. RTE.	SECTION	COUNTY	TOTAL SHEETS	SHEET NO.
1512	36)I	VERMILION	12	1
		ILLINOIS	CONTRACT NO. 70G81	

D-95-032-23

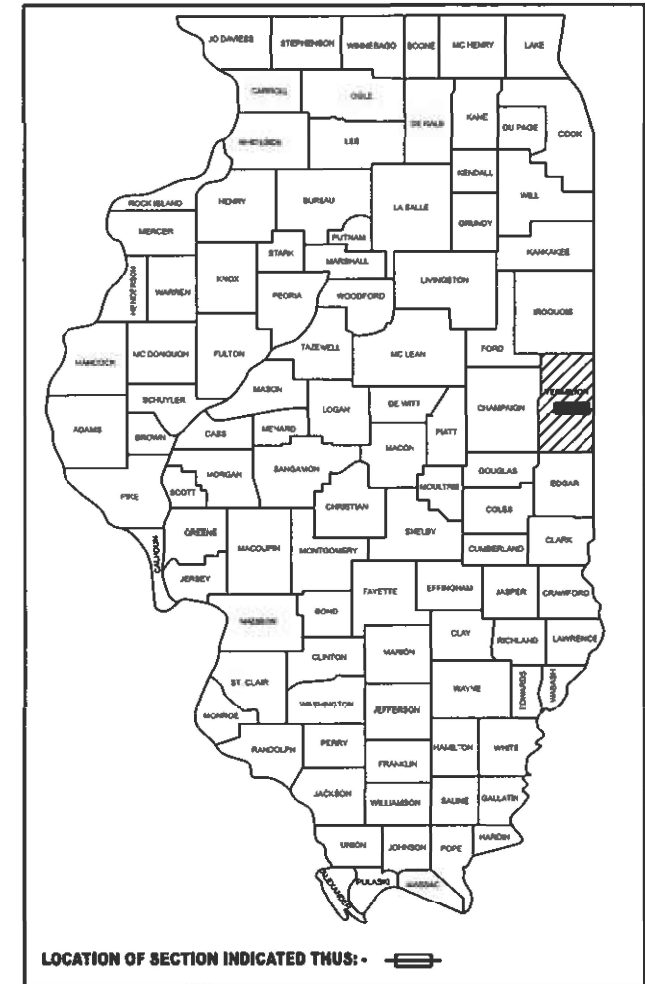
FOR INDEX OF SHEETS, SEE SHEET NO. 2

**CURRENT TRAFFIC DATA**  
2021 ADT: 3500  
2046 ADT: 3535

**PROPOSED HIGHWAY PLANS**

**FAS ROUTE FAS 1512 (US 150)  
SECTION (36)I  
PROJECT  
BRIDGE REPAIRS MISCELLANEOUS  
VERMILION COUNTY**

C-95-065-23



FULL SIZE PLANS HAVE BEEN PREPARED USING STANDARD ENGINEERING SCALES. REDUCED SIZED PLANS WILL NOT CONFORM TO STANDARD SCALES. IN MAKING MEASUREMENTS ON REDUCED PLANS, THE ABOVE SCALES MAY BE USED.

J.U.L.I.E.  
JOINT UTILITY LOCATION INFORMATION FOR EXCAVATION  
1-800-892-0123  
OR 811

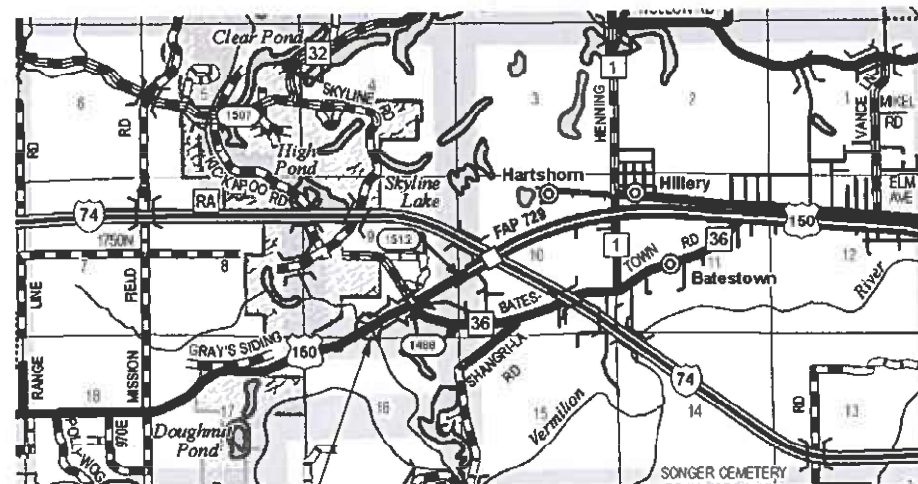
TOWNSHIP: CATLIN

PROJECT ENGINEER: TIM BRANDENBURG  
PROJECT MANAGER: ERIC SHAWLER  
PHONE NUMBER: (217)-465-4181

CONTRACT NO. 70G81



T 19 N



EX. S.N. 092-0050  
F.A.S. 1512 (US-150)  
STATION 1362+32.35  
OVER MIDDLE FORK VERMILION RIVER  
BRIDGE REPAIRS

R 12 W

GROSS LENGTH = 357.0 FT. = 0.068 MILE  
NET LENGTH = 357.0 FT. = 0.068 MILE

STATE OF ILLINOIS  
DEPARTMENT OF TRANSPORTATION

SUBMITTED 1/26 2024  
Kenneth A. Barnett  
REGIONAL ENGINEER

March 22, 2024  
[Signature]  
ENGINEER OF DESIGN AND ENVIRONMENT

March 22, 2024  
[Signature]  
DIRECTOR OF HIGHWAYS PROJECT IMPLEMENTATION

**PRINTED BY THE AUTHORITY OF THE STATE OF ILLINOIS**

INDEX OF SHEETS

SHEET NO.	ITEM
1	COVER SHEET
2	INDEX OF SHEETS
2	LIST OF STANDARDS
2	GENERAL NOTES
3	SUMMARY OF QUANTITIES
4-10	STRUCTCURE PLANS 092-0050
11-12	WIDTH RESTRICTION SIGNING

GENERAL NOTES

G.N.-100

ENGLISH UNITS OF MEASUREMENT SHALL GOVERN OVER AND SUPERSEDE ANY METRIC UNITS SHOWN IN THIS CONTRACT. WHERE INCLUDED, METRIC UNITS ARE FOR INFORMATION ONLY.

G.N.-105.09A

ALL ELEVATIONS SHOWN IN THE PLANS ARE BASED ON NORTH AMERICAN VERTICAL DATUM OF 1988. (NAVD 88)

SEE R.E. FILE FOR CALCULATIONS AND SCHEDULES.

THERE ARE NO COMMITMENTS ASSOCIATED WITH THIS PROJECT.

LIST OF HIGHWAY STANDARDS

STANDARD NO.	DESCRIPTION
000001-08	STANDARD SYMBOLS, ABBREVIATIONS AND PATTERNS
001006	DECIMAL OF AN INCH AND FOOT
701006-05	OFF-ROAD OPERATIONS, MULTILANE, 15' TO 24" FROM EDGE OF PAVEMENT
703316-13	LANE CLOSURE 2L2W BRIDGE REPAIR 45MPH OR MORE
701901-09	TRAFFIC CONTROL DEVICES

MODEL: Index (Sheet)  
FILE NAME: c:\p\work\pww\shawleres\0921280\0570G81\_Sht\_Ind.dgn

USER NAME = eric.shawler	DESIGNED -	REVISED -
PLOT SCALE = 0.16666633' / in.	DRAWN -	REVISED -
PLOT DATE = 1/26/2024	CHECKED -	REVISED -
	DATE -	REVISED -

**STATE OF ILLINOIS  
DEPARTMENT OF TRANSPORTATION**

**INDEX OF SHEETS, STANDARDS, GENERAL NOTES  
S.N. 092-0050**

SCALE: SHEET 1 OF 1 SHEETS STA. TO STA.

F.A.S RTE.	SECTION	COUNTY	TOTAL SHEETS	SHEET NO.
1512	36J	VERMILION	12	2
CONTRACT NO. 70G81				
ILLINOIS FED. AID PROJECT				



The existing structure was built in 1928 by the State of Illinois as S.B.I. Route 10, Section 36B-C at Station 201+00 in Vermilion County. The structure was rehabilitated in 1977 with F.A. Route 11, Section 36BR at Station 1362+32.35. With that Section, the original steel through trusses were removed and the substructure units were rebuilt to accommodate a new widened plate girder with R.C. deck superstructure. In 2015 the structure underwent repairs as F.A.S. 1512 (US-150) Section 36 BDR, Joint and bearing replacement, bridge deck patching and replacement of the H.M.A. wearing surface. The structure carries F.A.S. 1512 (US -150) over the Middle Fork Vermilion River West of Danville.

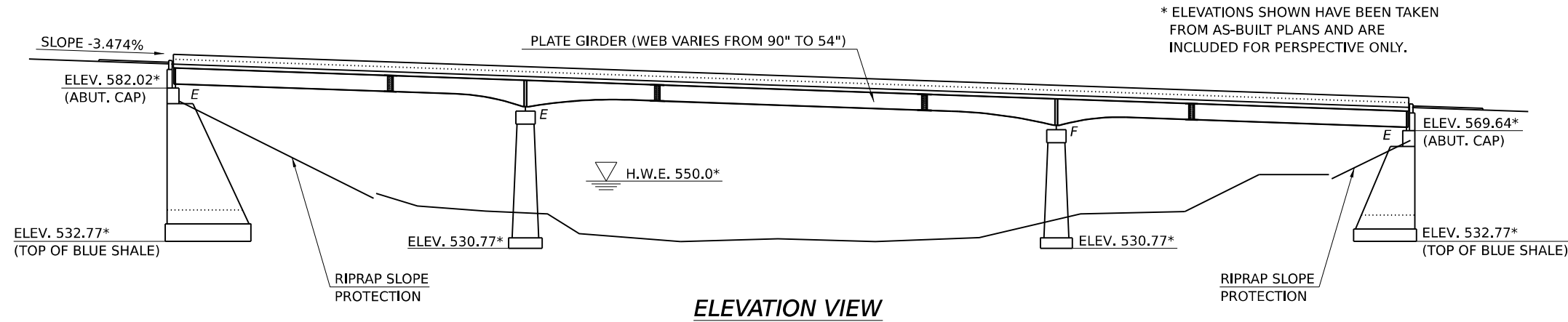
The superstructure consists of a 7½" R.C. deck with a waterproofing membrane system and 1½" H.M.A. wearing surface supported by five haunched weathering steel plate girders with web depths varying from 54"-90". The superstructure is supported by two retrofitted counterfort abutments and two tapered stem piers on spread footings. The structure measures 357'-3" from back to back abutments. The deck has a clear width of 30'-6" from face to face of curb and an out-to-out width of 34'-0".

## GENERAL PLAN & ELEVATION

S.N. 092-0050

### SCOPE OF WORK

- FURNISHING AND ERECTING STRUCTURAL STEEL.
- JACK AND REMOVE EXISTING BEARINGS. PLACEMENT OF FIXED AND ELASTOMERIC BEARINGS.
- PERFORM STRUCTURE REPAIR OF CONCRETE LESS THAN FIVE INCHES.

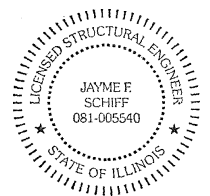
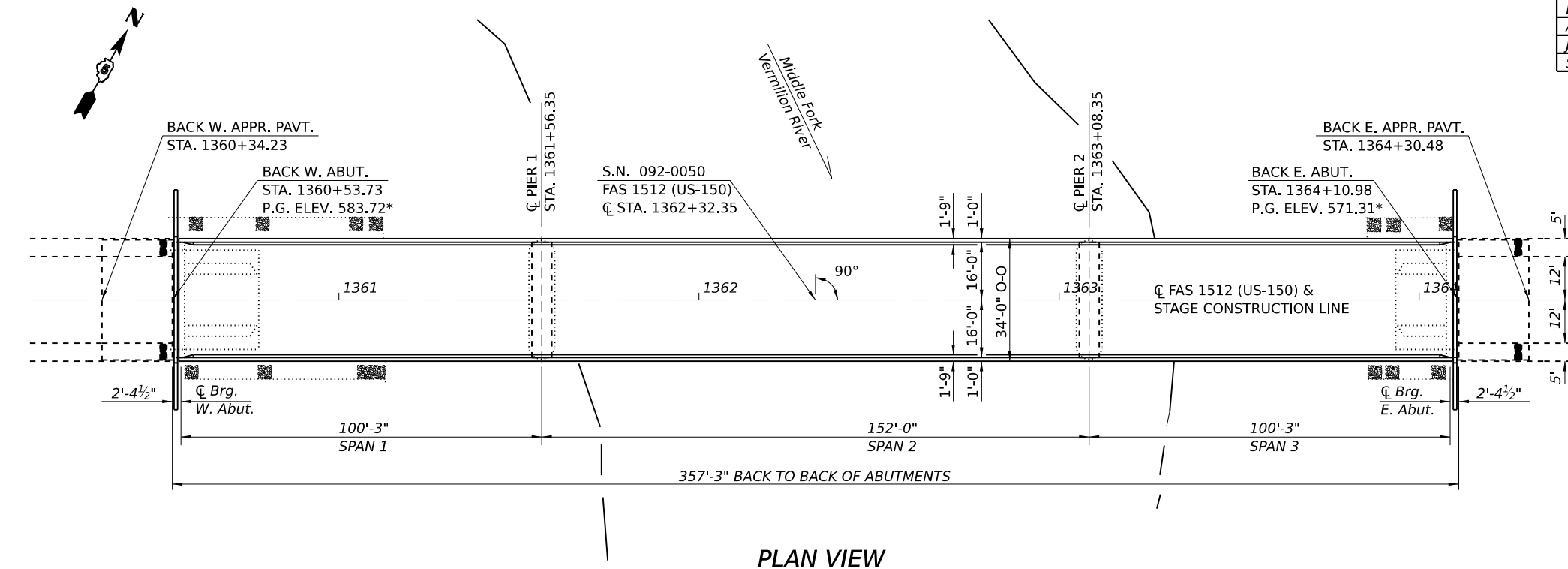


### TOTAL BILL OF MATERIALS

ITEM	UNIT	TOTAL
FURNISHING & ERECTING STRUCTURAL STEEL	POUND	5,110.0
ELASTOMERIC BEARING ASSEMBLY, TYPE I	EACH	5.0
ANCHOR BOLTS, 1 INCH	EACH	40.0
JACK & REMOVE EXISTING BEARINGS	EACH	10.0
STRUCTURAL REPAIR OF CONCRETE (DEPTH =to or <5 INCHES)	SQ FT	436.0

### GENERAL NOTES

PLAN DIMENSIONS AND DETAILS RELATIVE TO THE EXISTING PLANS ARE SUBJECT TO NOMINAL CONSTRUCTION VARIATIONS. THE CONTRACTOR SHALL FIELD VERIFY EXISTING DIMENSIONS AND DETAILS AFFECTING NEW CONSTRUCTION AND MAKE NECESSARY APPROVED ADJUSTMENTS PRIOR TO CONSTRUCTION OR ORDERING OF MATERIALS. SUCH VARIATIONS SHALL NOT BE CAUSE FOR ADDITIONAL COMPENSATION FOR A CHANGE IN SCOPE OF WORK, HOWEVER, THE CONTRACTOR WILL BE PAID FOR THE QUANTITY ACTUALLY FURNISHED AT THE UNIT PRICE BID FOR THE WORK.



EXPIRES 11-30-2024

Jayme F. Schiff

MODEL: Structure Sheet 01 (Sheet)  
FILE NAME: c:\pw\work\pwr\shawler\res\0921280\0570681\_Sht\_Str.dgn

USER NAME = eric.shawler	DESIGNED - ESS	REVISED -
PLOT SCALE = \$\$CALES	CHECKED - TJB	REVISED - 2
PLOT DATE = 3/15/2024	DATE -	REVISED -

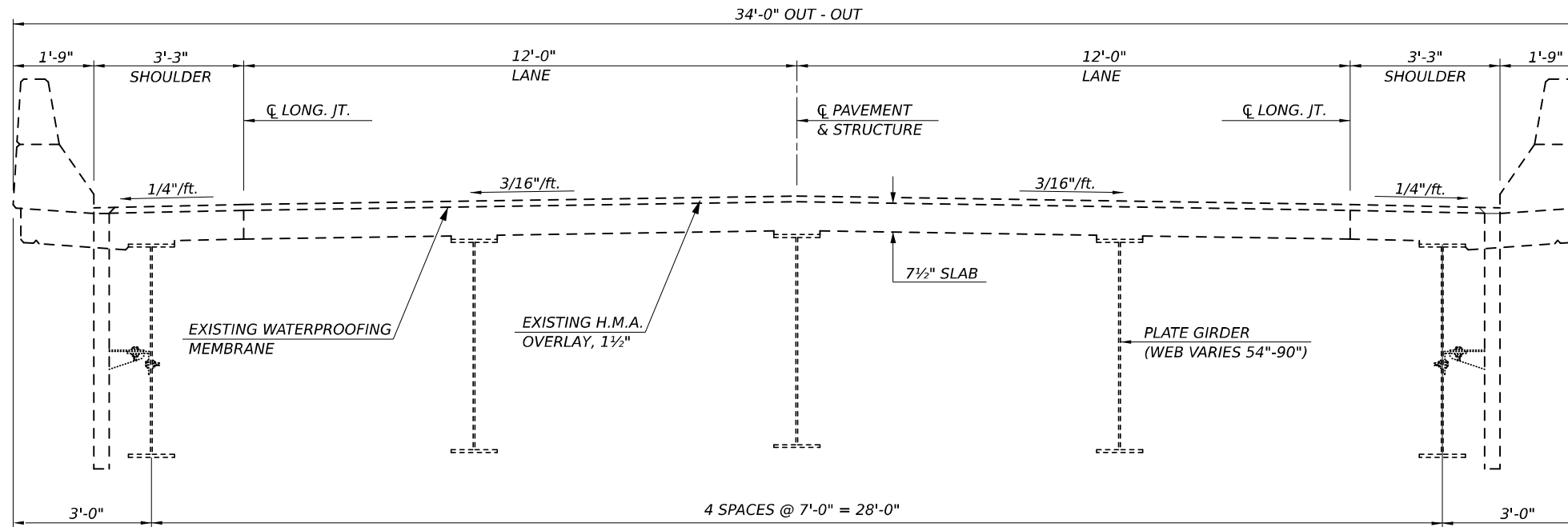
STATE OF ILLINOIS  
DEPARTMENT OF TRANSPORTATION

GENERAL PLAN & ELEVATION  
S.N. 092-0050

SCALE: SHEET 1 OF 7 SHEETS STA. TO STA.

F.A.S RTE.	SECTION	COUNTY	TOTAL SHEETS	SHEET NO.
1512	36J	VERMILION	12	4
CONTRACT NO. 70G81				
ILLINOIS FED. AID PROJECT				

**EXISTING DECK CROSS SECTION**  
**S.N. 092-0050**



LOOKING EAST

MODEL: Structure Sheet 2 (Sheet)  
FILE NAME: c:\p\work\ericshawleres\0921280\0570681\_Sht\_Sir.dgn

USER NAME = eric.shawler	DESIGNED - ESS	REVISED -
	DRAWN -	REVISED -
PLOT SCALE = 0.16666633' / in.	CHECKED - TJB	REVISED -
PLOT DATE = 1/26/2024	DATE -	REVISED -

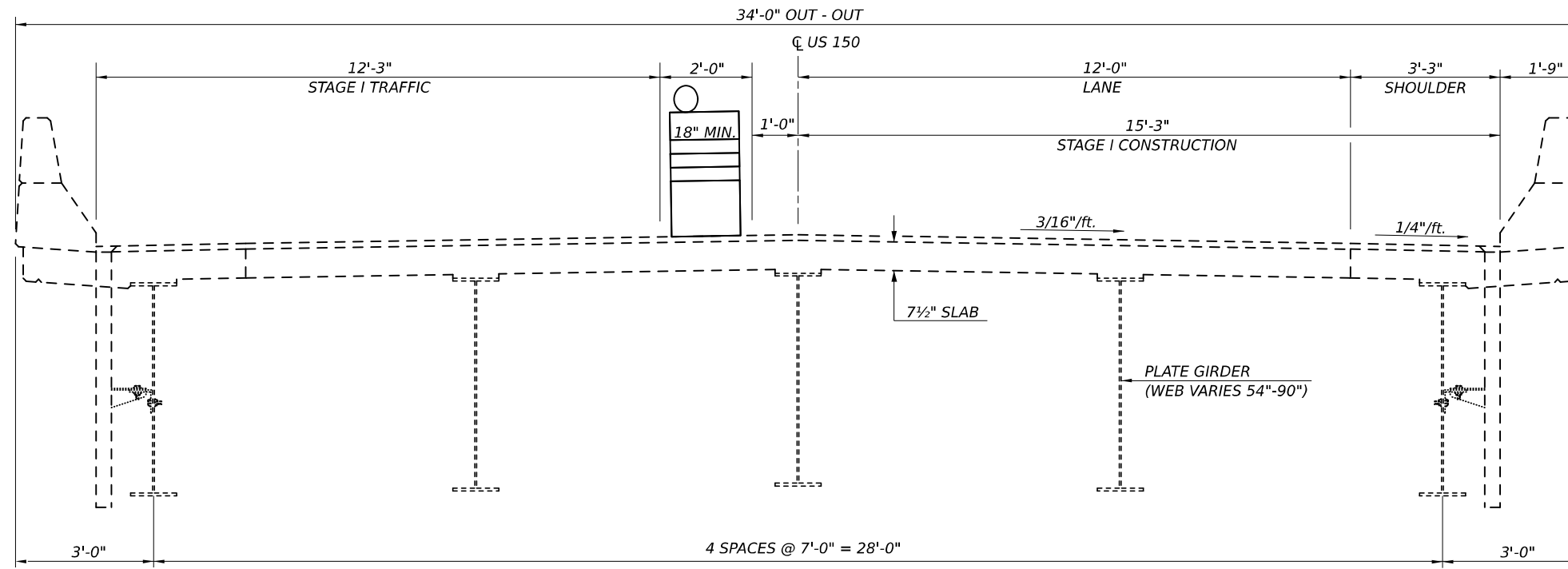
**STATE OF ILLINOIS**  
**DEPARTMENT OF TRANSPORTATION**

**TYPICAL DECK CROSS SECTION**  
**S.N. 092-0050**

SCALE: SHEET 2 OF 7 SHEETS STA. TO STA.

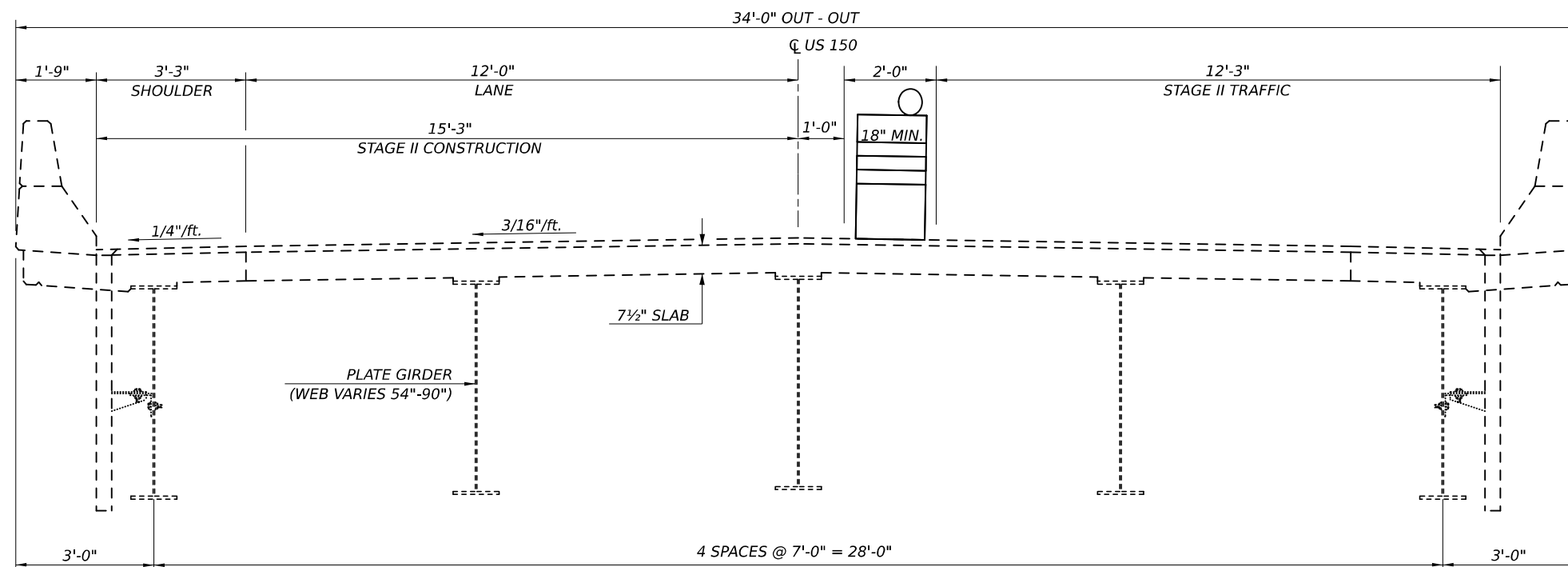
F.A.S. RTE.	SECTION	COUNTY	TOTAL SHEETS	SHEET NO.
1512	36J	VERMILION	12	5
CONTRACT NO. 70G81				
ILLINOIS FED. AID PROJECT				

**STAGE ONE CONSTRUCTION**  
**S.N. 092-0050**



LOOKING EAST

**STAGE TWO CONSTRUCTION**  
**S.N. 092-0050**



LOOKING EAST

MODEL: Structure Sheet 3 (Sheet)  
FILE NAME: c:\p\work\ericshawleres\0921280\0570681\_Sht\_S1r.dgn

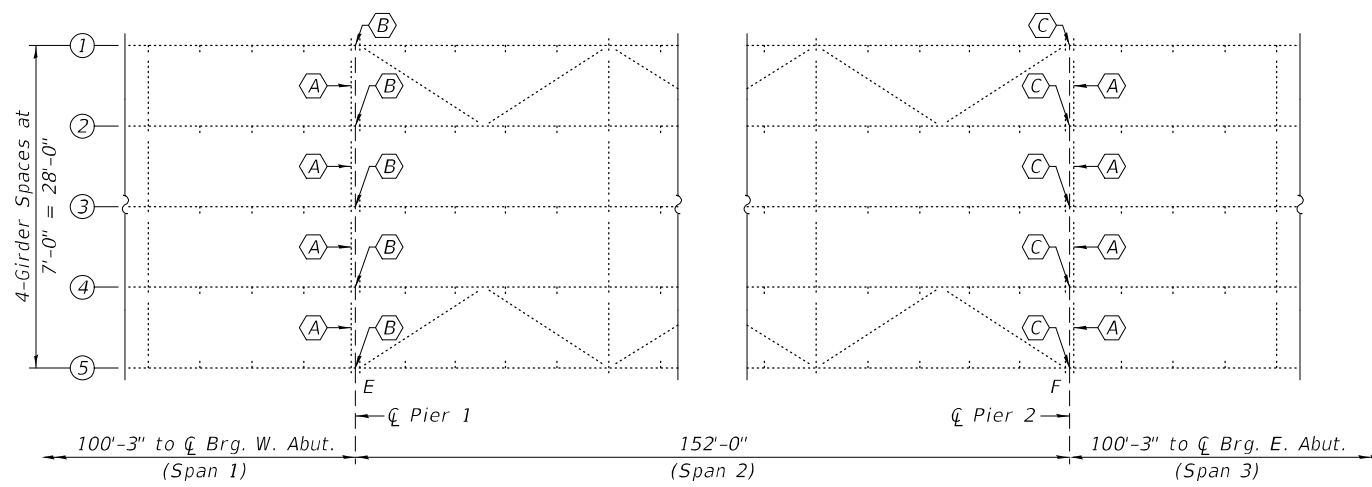
USER NAME = eric.shawler	DESIGNED - ESS	REVISED -
PLOT SCALE = 0.16666833' / in.	DRAWN -	REVISED -
PLOT DATE = 1/26/2024	CHECKED - TJB	REVISED -
	DATE -	REVISED -

**STATE OF ILLINOIS**  
**DEPARTMENT OF TRANSPORTATION**

**STAGING DECK CROSS SECTION**  
**S.N. 092-0050**

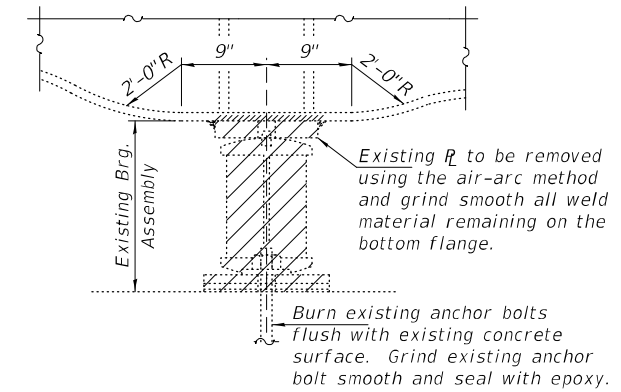
SCALE: SHEET 3 OF 7 SHEETS STA. TO STA.

F.A.S. RTE.	SECTION	COUNTY	TOTAL SHEETS	SHEET NO.
1512	36 I	VERMILION	12	6
CONTRACT NO. 70G81				
ILLINOIS FED. AID PROJECT				



**PARTIAL FRAMING PLAN**

- (A) - Cross Frame to be Removed, Stored, & Reinstalled. New Jacking System to be installed and removed after replacement of the bearings. (See Special Provision).
- (B) - Existing Expansion Brg. to be Removed & Replaced.
- (C) - Existing Fixed Brg. to be Removed & Replaced.



**EXISTING BEARING REMOVAL DETAIL**

Cost included with Jack and Remove Existing Bearings.

**NOTES**

All structural steel shall conform to AASHTO Classification M-270 Gr. 50, unless otherwise noted.  
 New steel extensions, shim plates, connection bolts and fixed bearing assemblies are included with Furnishing and Erecting Structural Steel.  
 Prior to ordering any material, the Contractor shall verify in the field all bearing height and shim thickness dimensions. Adjustment must account for deck heave due to pack rust (if present).  
 Min. jack capacity = 200 Tons (Near Exterior Girder); 150 Tons (Near Interior Girder)  
 Anchor bolts shall be ASTM F1554 all-thread (or an Engineer-approved alternate material) of the grade(s) and diameter(s) specified. The corresponding specified grade of AASHTO M314 anchor bolts may be used in lieu of ASTM F1554.  
 Drilled and set anchor bolts shall be installed according to Article 521.06 of the Standard Specifications.  
 Cost of Side retainers and Stainless Steel plates shall be included in the cost of Elastomeric Bearing Assembly, Type I.  
 New 3/4"Ø high strength bolts shall be used to re-install existing Cross Frame. Cost included with Jack and Remove Existing Bearings.  
 Fasteners shall be ASTM 3125, Grade A325, Type 1, mechanically galvanized bolts. Bolts 7/8"Ø, open holes 1 1/16"Ø, unless otherwise noted.  
 Existing structural steel that will be in contact with new structural steel shall be cleaned and painted prior to erection as required by the special provision "Cleaning and Painting Contact Surface Areas of Existing Steel Structures".  
 All new structural steel and bearing assembly shall be hot-dip galvanized. See Special Provisions for "Hot Dip Galvanizing for Structural Steel".  
 Stage construction must be utilized for the removal and replacement of the bearings on the exterior girders (see special provisions).



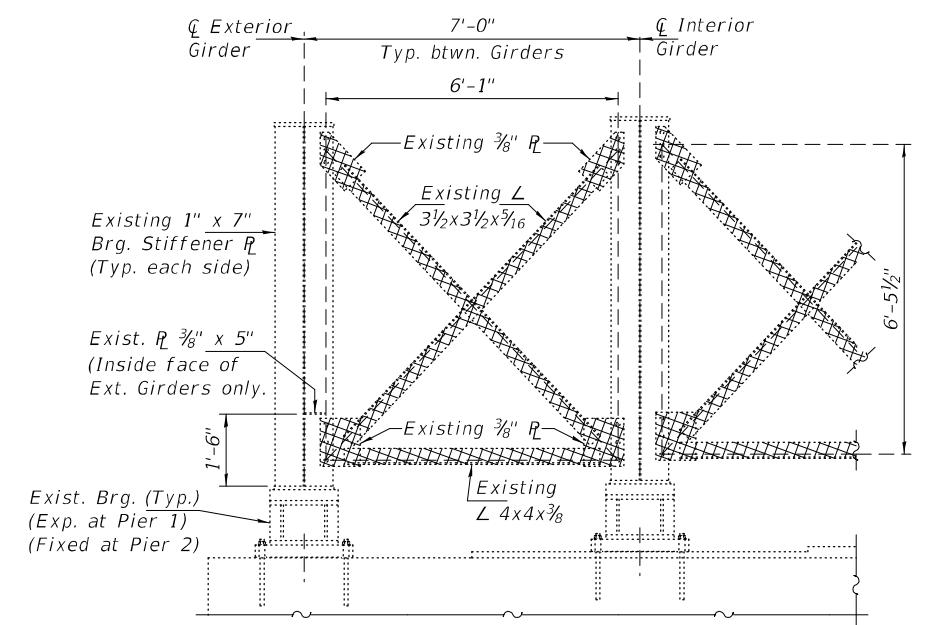
**PIER 1**  
(Looking Southwest)



**PIER 2**  
(Looking Southeast)



**TYPICAL EXISTING BEARING**  
Pier 1 Expansion Bearing shown, Pier 2 Fixed Bearings similar.



**CROSS FRAME REMOVAL & REINSTALLATION DETAIL**

Cross Hatched areas indicate Cross Frame to be Removed, Stored, & Reinstalled. (8-Locations)

**BILL OF MATERIAL**

Item	Unit	Total
Elastomeric Bearing Assembly, Type I	Each	5
Jack and Remove Existing Bearings	Each	10
Furnishing and Erecting Structural Steel	Pound	5110
Anchor Bolts, 1"Ø	Each	40

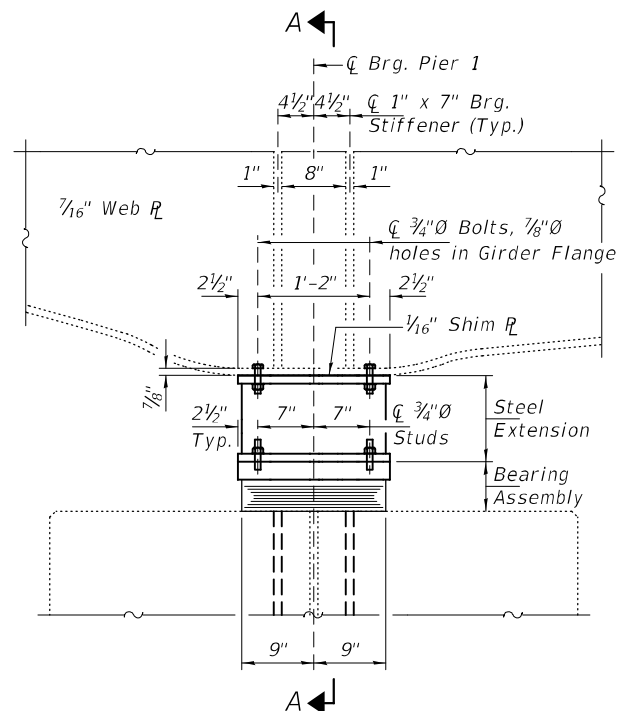
DESIGNED - Adrian T. Holloway	EXAMINED - [Signature]	DATE - MARCH 15, 2024
CHECKED - Victor H. Veliz	PASSED - [Signature]	REVISER -
DRAWN - STEFFEN		REVISER -
CHECKED - ATH VHV		

**STATE OF ILLINOIS**  
**DEPARTMENT OF TRANSPORTATION**

**CROSS FRAME & BEARING REMOVAL DETAILS**  
**SN 092-0050**

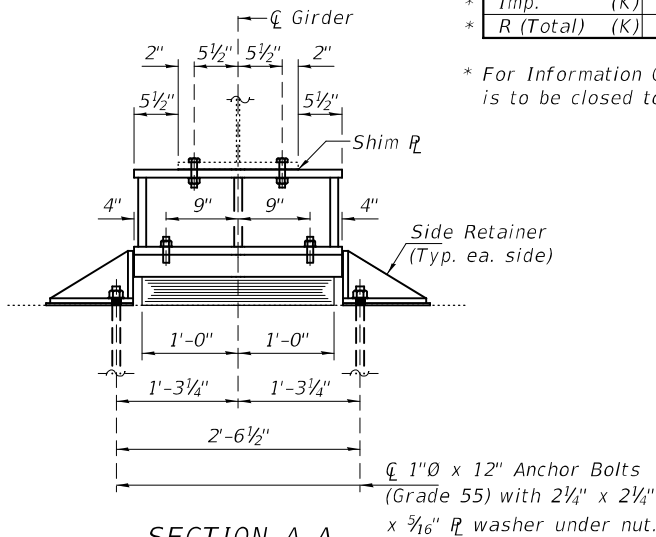
SHEET NO. 1 OF 3 SHEETS

F.A.S. RTE.	SECTION	COUNTY	TOTAL SHEETS	SHEET NO.
1512	(36)I	VERMILION	12	7
CONTRACT NO. 70G81				
ILLINOIS FED. AID PROJECT				



ELEVATION AT PIER 1

TYPE I ELASTOMERIC EXP. BRG. AT PIER 1

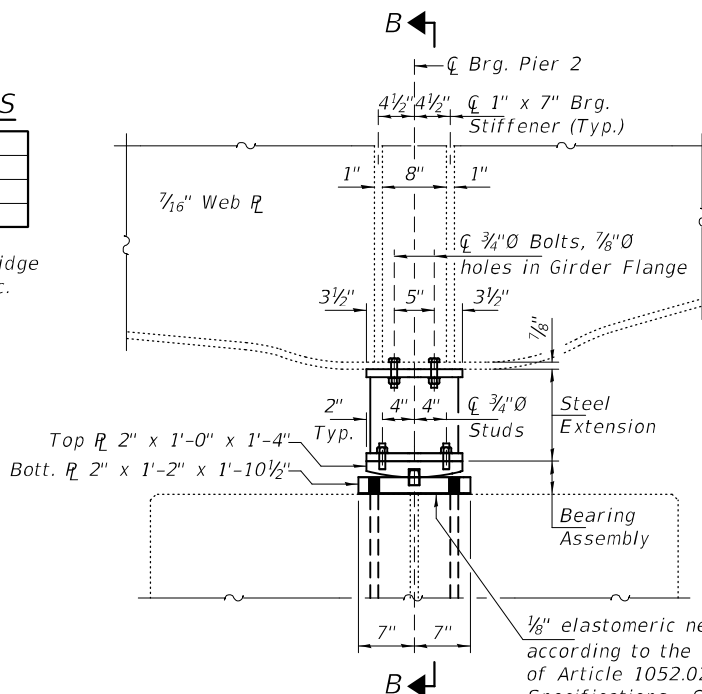


SECTION A-A

BEAM REACTIONS

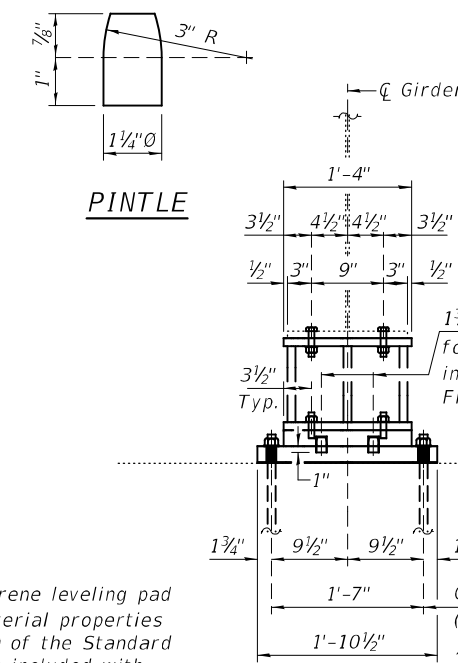
R <sub>L</sub>	(K)	197.2
R <sub>R</sub>	(K)	77.2
Imp.	(K)	15.4
R (Total)	(K)	289.8

\* For Information Only. Bridge is to be closed to traffic.

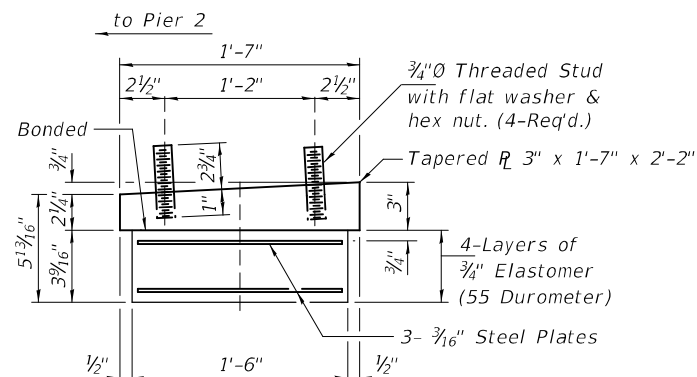


ELEVATION AT PIER 2

FIXED BEARINGS AT PIER 2

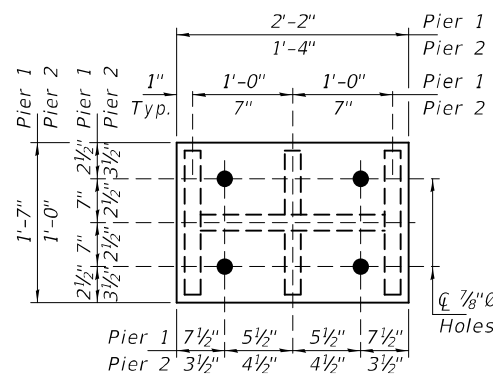


SECTION B-B

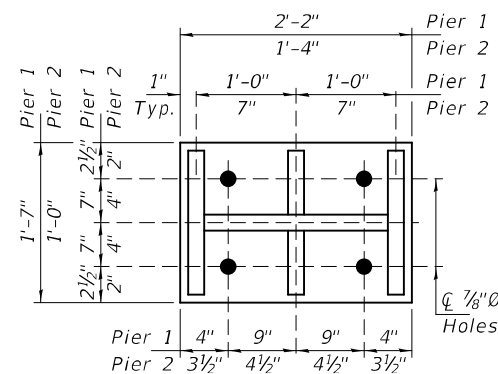


BEARING ASSEMBLY

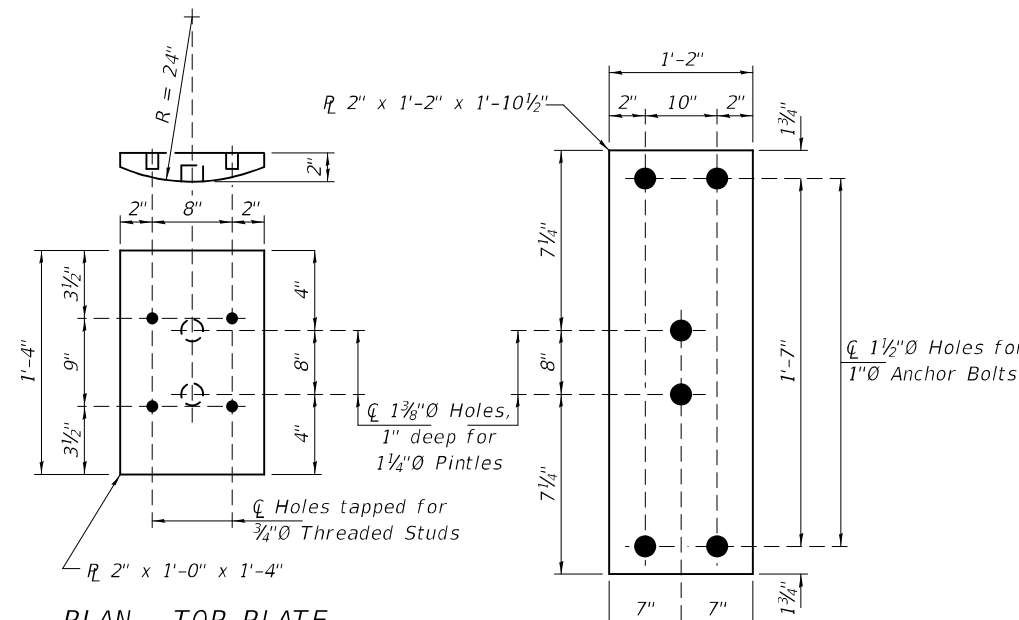
Note:  
Shim plates shall not be placed under Bearing Assembly.



PLAN - EXTENSION TOP PLATE



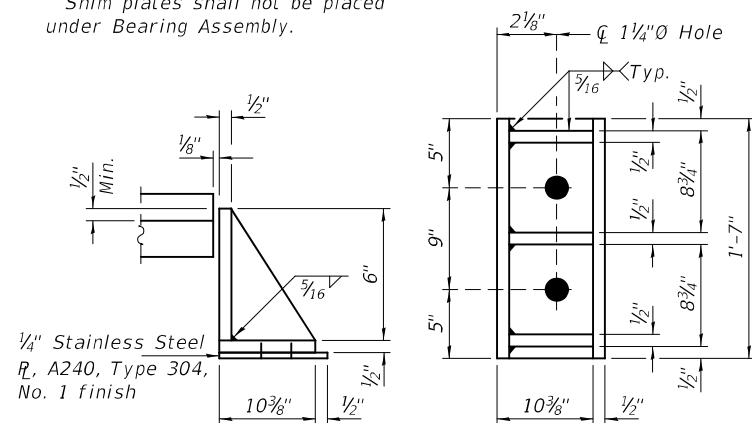
PLAN - EXTENSION BOTTOM PLATE



PLAN - TOP PLATE  
FIXED BEARINGS

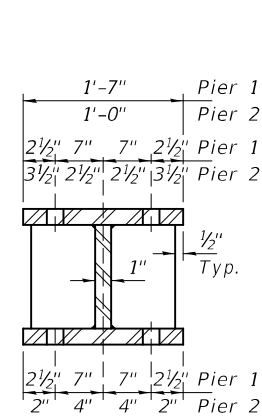
PLAN - BOTTOM PLATE  
FIXED BEARINGS

Notes:  
For Notes and Bearing Removal Details, see sheet 1 of 3.

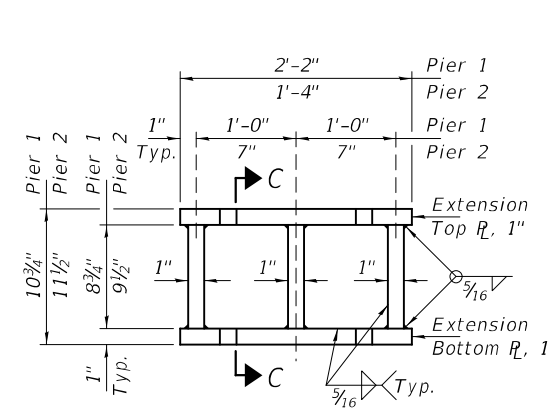


SIDE RETAINER

(10-Required)  
Equivalent rolled angle with stiffeners will be allowed in lieu of welded plates.



SECTION C-C



STEEL EXTENSION DETAIL

DESIGNED -	ATH
CHECKED -	VHV
DRAWN -	STEFFEN
CHECKED -	ATH VHV

EXAMINED	DATE -	MARCH 15, 2024
PASSED	ENGINEER OF STRUCTURAL SERVICES	REVISOR -
	ENGINEER OF BRIDGES AND STRUCTURES	REVISOR -

STATE OF ILLINOIS  
DEPARTMENT OF TRANSPORTATION

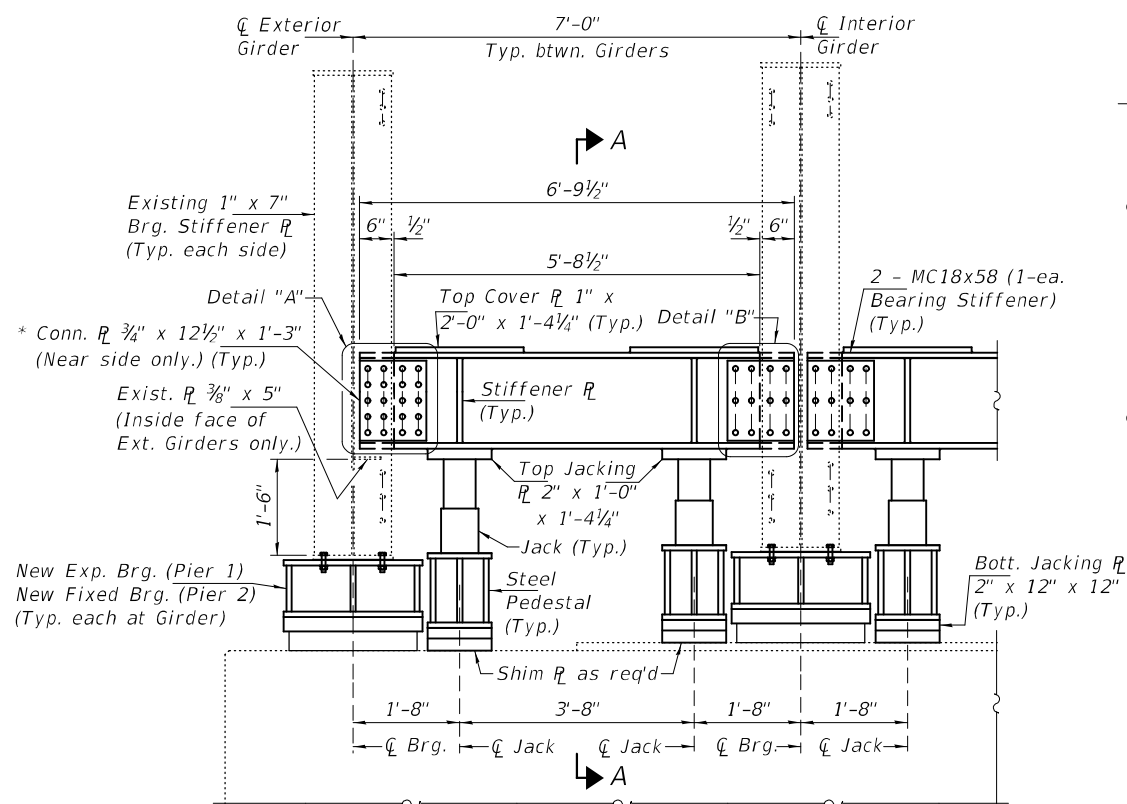
PIER 1 & 2 BEARING DETAILS  
SN 092-0050

SHEET NO. 2 OF 3 SHEETS

F.A.S. RTE.	SECTION	COUNTY	TOTAL SHEETS	SHEET NO.
1512	(36)I	VERMILION	12	8
CONTRACT NO. 70G81				

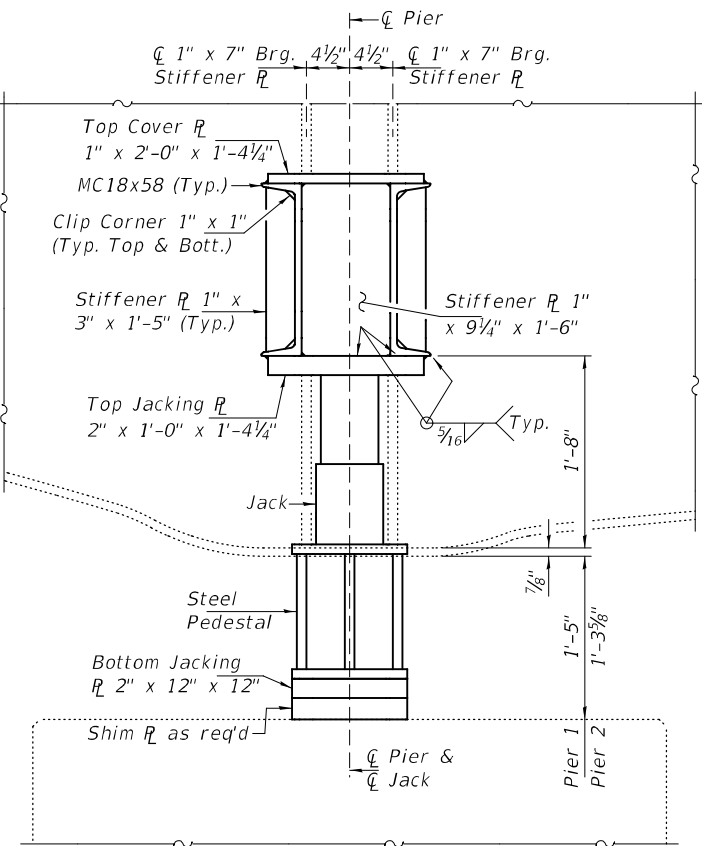
ILLINOIS FED. AID PROJECT





**JACKING PROCEDURE - PARTIAL ELEVATION**

Pier 1 shown, Pier 2 similar. Bridge Deck not shown for clarity. Side Retainers not shown since they will be installed after the existing bearings have been removed and the new bearings are installed and the jacks removed.



**SECTION A-A**

**NOTES**

Fasteners shall be ASTM 3125, Grade A325, Type 1, mechanically galvanized bolts. Bolts  $\frac{7}{8}$ " $\phi$ , open holes  $\frac{1}{4}$ " $\phi$ , unless otherwise noted.

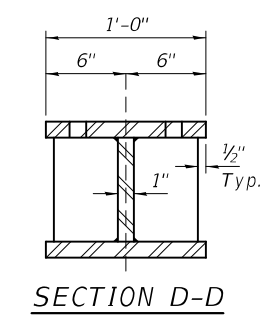
Cost of removal and re-installation of all members including the existing cross frames necessary to complete the work as detailed on the plans and as specified in the Special Provisions shall be included with Jack and Remove Existing Bearings.

Cost of all steel members as detailed on the plans to facilitate the jacking, cribbing and removal of the existing bearings and as specified in the Special Provisions shall be included with Jack and Remove Existing Bearings.

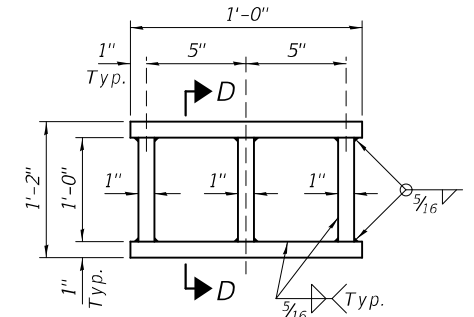
Minimum Jack Capacities:  
 Near Exterior Girder = 200 Tons  
 Near Interior Girder = 150 Tons

The jacks shall be locked from movement with no hydraulic pressure while the bearings are being removed and replaced.

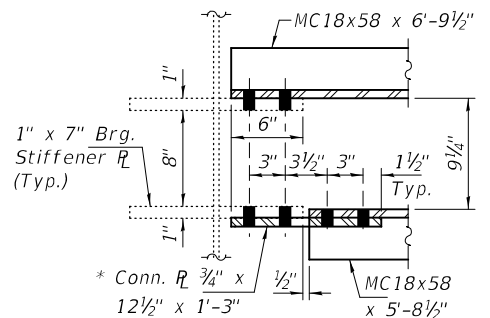
After removal of the Bearing Jacking Steel Assembly and reinstallation of the Cross Frame, all remaining holes in the bearing stiffener shall be filled with equal sized high-strength bolts.



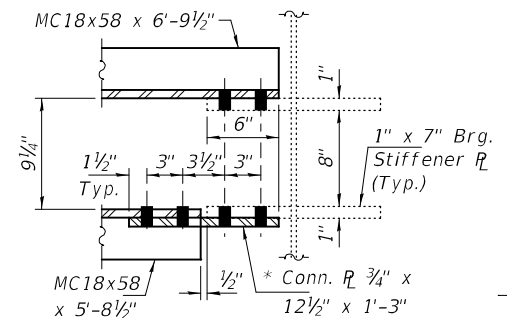
**SECTION D-D**



**STEEL PEDESTAL DETAIL**

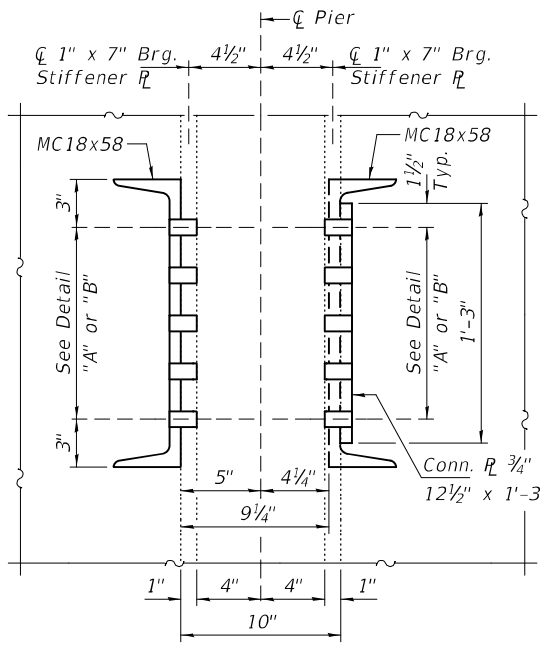


**SECTION E-E**

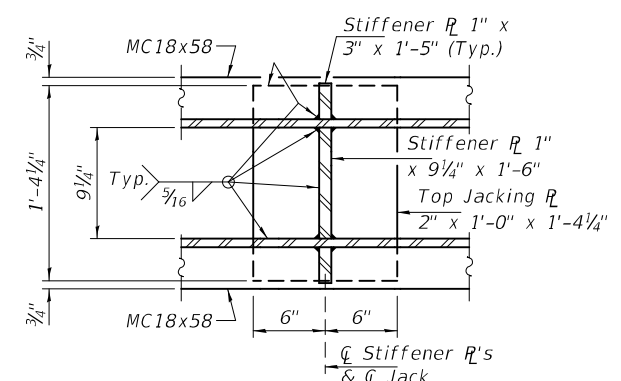


**SECTION F-F**

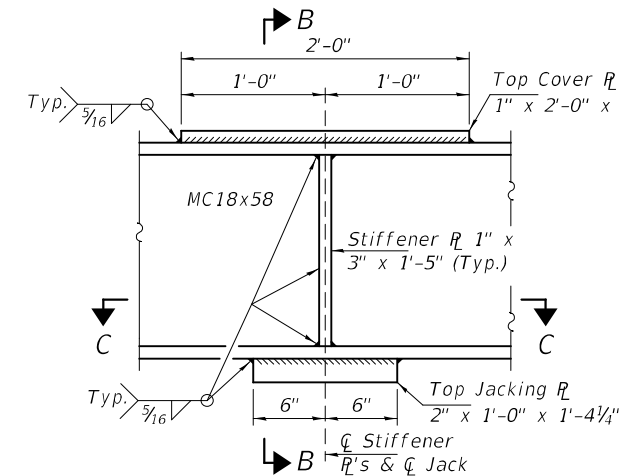
\* Connecting  $\bar{r}$  to be installed after the bearing jacking system is in place.



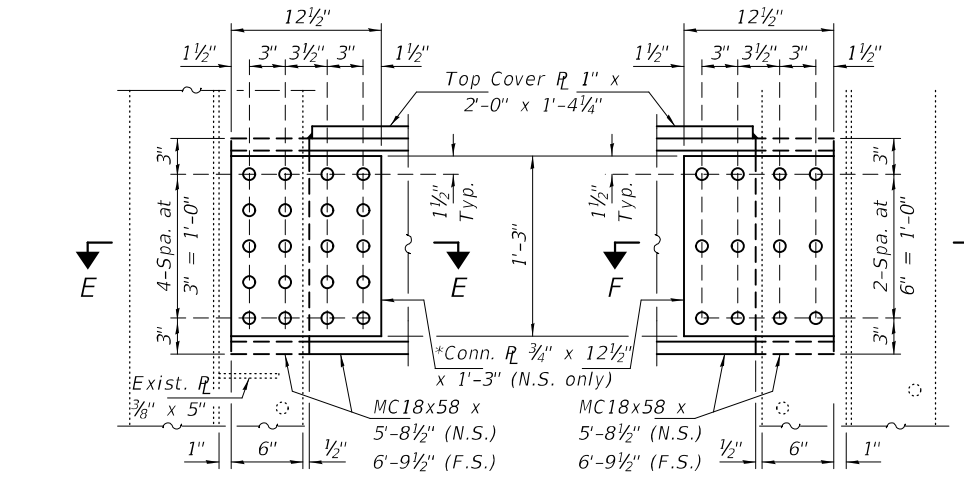
**SECTION THRU DETAIL "A" & "B"**



**SECTION C-C**

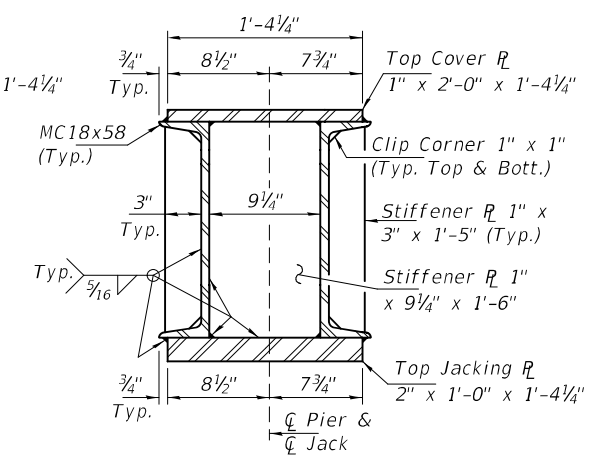


**JACKING & STIFFENER PLATE DETAILS**



**DETAIL "A"**  
(Typical at Exterior Girders)

**DETAIL "B"**  
(Typical at Interior Girders)



**SECTION B-B**

DESIGNED - ATH	EXAMINED	DATE - MARCH 15, 2024
CHECKED - VHV	ENGINEER OF STRUCTURAL SERVICES	
DRAWN - STEFFEN	PASSED	REVISOR -
CHECKED - ATH VHV	ENGINEER OF BRIDGES AND STRUCTURES	REVISOR -

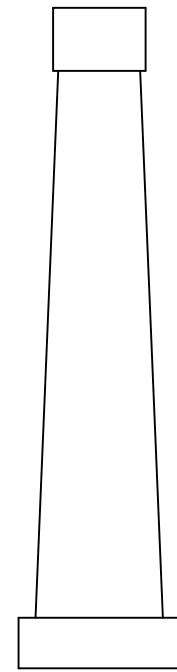
**STATE OF ILLINOIS**  
**DEPARTMENT OF TRANSPORTATION**

**BEARING JACKING STEEL ASSEMBLY**  
**SN 092-0050**

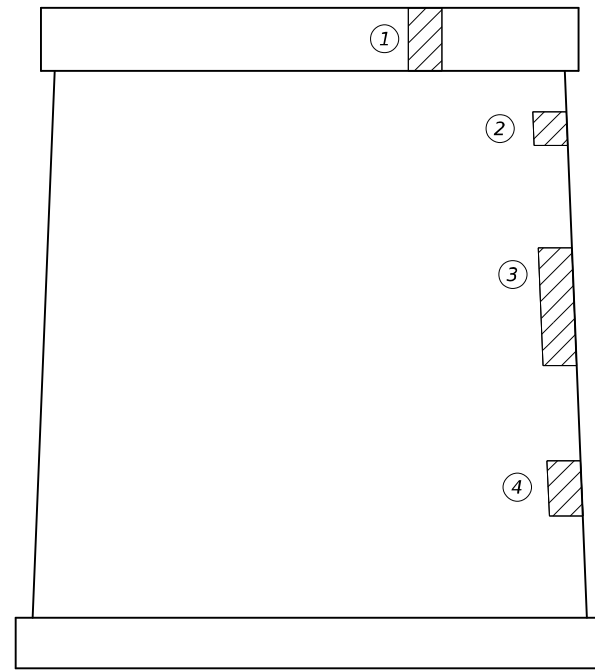
F.A.S. RTE.	SECTION	COUNTY	TOTAL SHEETS	SHEET NO.
1512	(36)I	VERMILION	12	9
CONTRACT NO. 70G81				

SHEET NO. 3 OF 3 SHEETS

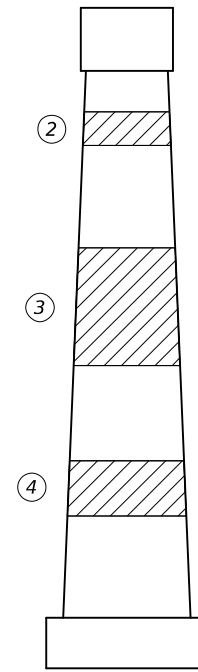
ILLINOIS FED. AID PROJECT



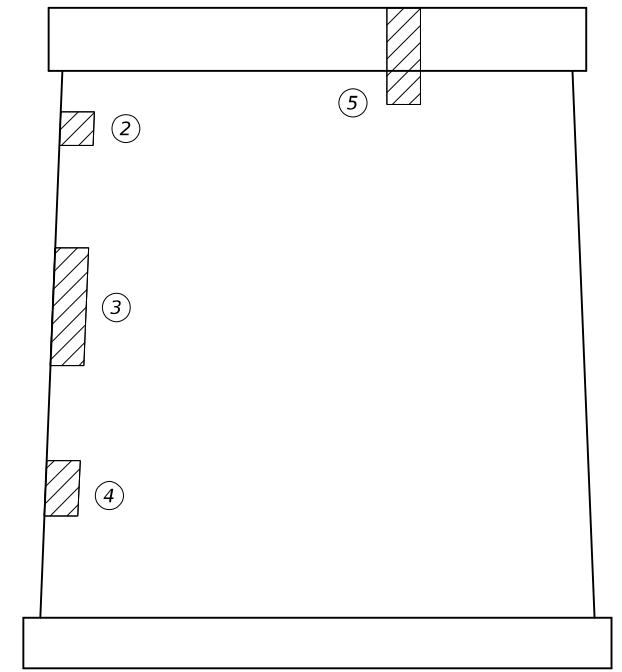
**SOUTH**



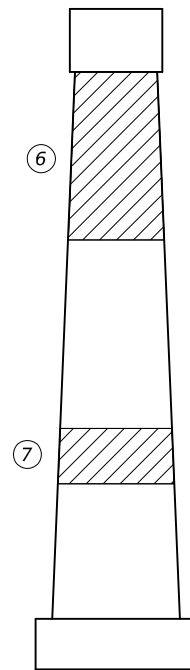
**PIER ONE- EAST SIDE**



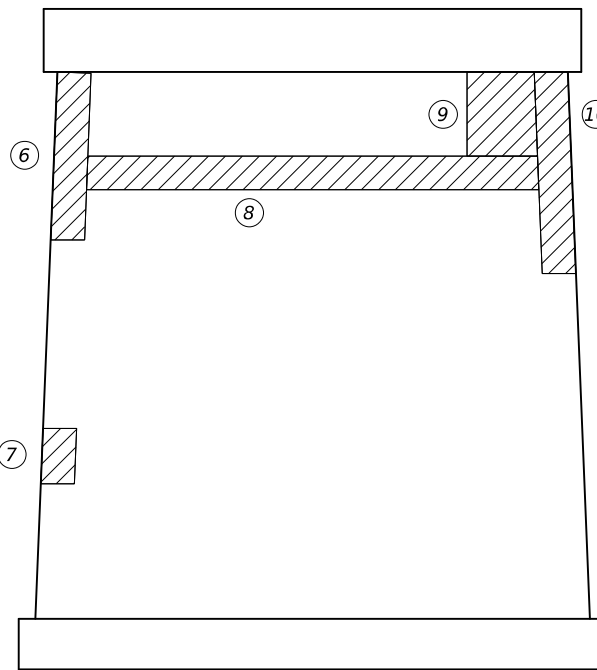
**NORTH**



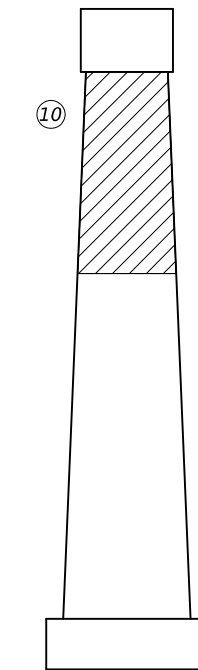
**PIER ONE - WEST SIDE**



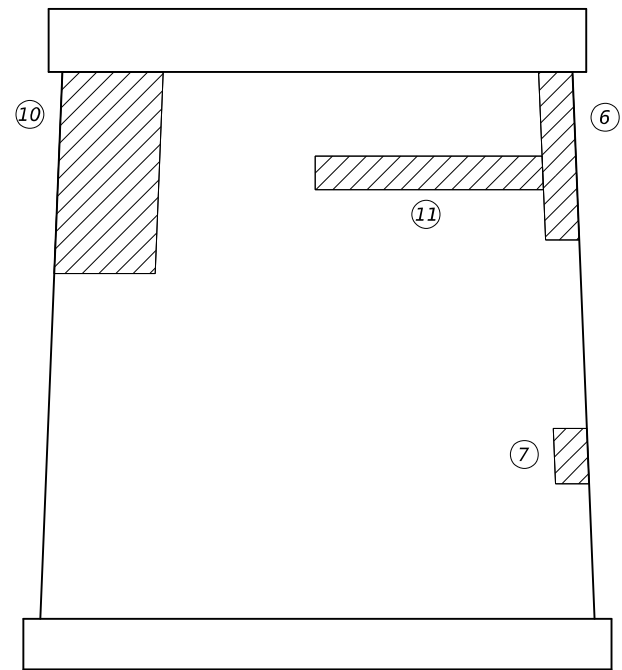
**SOUTH**



**PIER TWO - EAST SIDE**



**NORTH**



**PIER TWO - WEST SIDE**

**NOTE**  
SEE SPECIAL PROVISION FOR STRUCTURAL REPAIR OF CONCRETE.

**LEGEND**



STRUCTURE REPAIR OF CONCRETE  
(DEPTH = TO < 5 INCHES)

**BILL OF MATERIALS**

ITEM	UNIT	TOTAL
STRUCTURE REPAIR OF CONCRETE (DEPTH = TO < 5 INCHES)	SQ FT	436.0

PATCH NO.	SIZE W. FT. * L. FT.	SQ FT	PATCH NO.	SIZE W. FT. * L. FT.	SQ FT
1	2.0 X 4.0	8.0	11	13.0 X 2.0	26.0
2	8.25 X 2.0	16.5			
3	11.0 X 7.0	77.0			
4	12.0 X 3.0	36.0			
5	5.75 X 2.0	11.0			
6	8.50 X 7.0	59.5			
7	10.0 X 2.0	20.0			
8	27.0 X 2.0	54.0			
9	4.0 X 5.0	20.0			
10	9.0 X 12.0	108.0			

MODEL: Structure Sheet 7 (Sheet)  
FILE NAME: c:\p\work\12600570681\_Sht\_S7.dgn

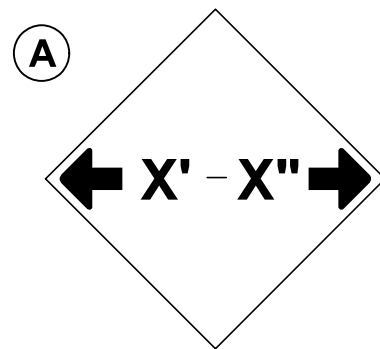
USER NAME = eric.shawler	DESIGNED -	REVISED -
PLOT SCALE = 0.16666833' / in.	DRAWN -	REVISED - 2
PLOT DATE = 1/26/2024	CHECKED -	REVISED -
	DATE -	REVISED -

**STATE OF ILLINOIS  
DEPARTMENT OF TRANSPORTATION**

**STRUCTURE REPAIR OF CONCRETE  
S.N. 092-0050**

SCALE: SHEET 7 OF 7 SHEETS STA. TO STA.

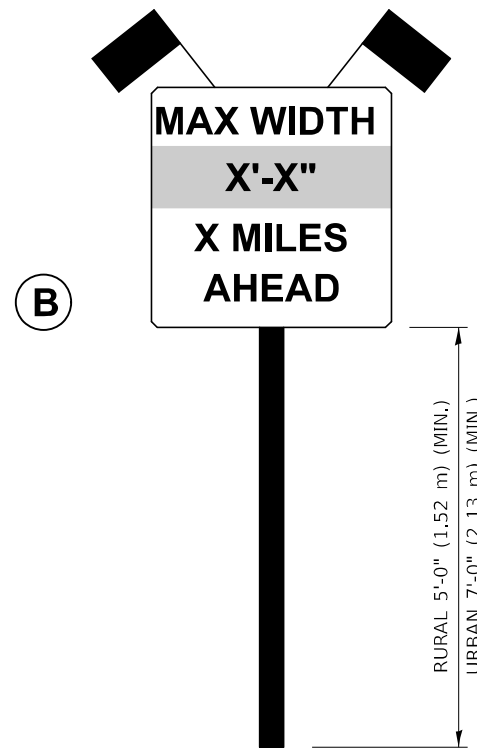
F.A.S RTE.	SECTION	COUNTY	TOTAL SHEETS	SHEET NO.
1512	36J	VERMILION	12	10
CONTRACT NO. 70G81				
ILLINOIS FED. AID PROJECT				



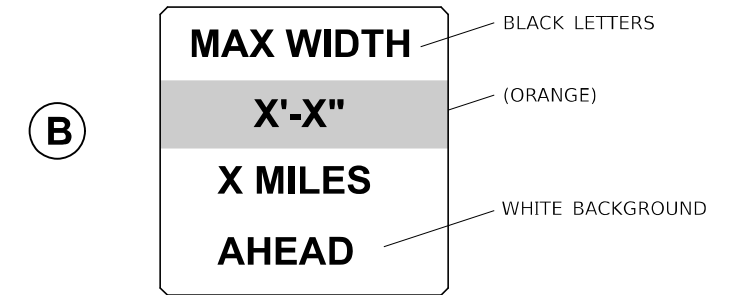
**W12-2(O)-48"x48"(1200x1200)**

SIGN (A) 2 SIGNS - W12-2(O)-48"x48"(1200x1200) ARE TO BE PLACED AS SHOWN IN THE PLANS OR AS DIRECTED BY THE ENGINEER.

SIGN (B) 2 SIGNS - (SIGN PANEL, TYPE II) AS SHOWN ARE TO BE PLACED AS SHOWN IN THE PLANS OR AS DIRECTED BY THE ENGINEER.



**SIGN PANEL, TYPE II**



**W12-1103(O)-48"x48"(1200x1200)  
"D" LETTERS/NUMBERS**

**STAGE WIDTHS:**

STAGE 1 WIDTH = 12'-3" Actual; 10'-9" posted; REQUIRED

STAGE 2 WIDTH = 12'-3" Actual; 10'-9" posted; REQUIRED

**GENERAL NOTES**

1. ALL TRAFFIC CONTROL DEVICES SHALL BE FURNISHED, ERECTED AND MAINTAINED BY THE CONTRACTOR.
2. ALL (B) SIGNS SHALL HAVE FLAGS INSTALLED UNLESS OTHERWISE DIRECTED.
3. LOCATIONS OF TRAFFIC CONTROL DEVICES MAY BE ADJUSTED BY THE ENGINEER.
4. ALL TRAFFIC CONTROL SHOWN ON THIS SHEET SHALL BE PAID FOR AT THE CONTRACT LUMP SUM PRICE FOR WIDTH RESTRICTION SIGNING.
5. ALL SIGNS SHALL BE POST MOUNTED UNLESS OTHERWISE DIRECTED.
6. ALL SIGNS SHOWN ORANGE (O) SHALL BE FLUORESCENT ORANGE.
7. ALL SIGNS SHOWN SHALL CONSIST OF THE CURRENT RETROREFLECTIVE SHEETING REQUIREMENTS AS OUTLINED IN SECTION 1106.01 OF THE STANDARD SPECIFICATIONS BOOK.

Note: All dimensions are in INCHES (millimeters) unless otherwise shown.

MODEL: Structure Sheet 8 (Sheet)  
FILE NAME: c:\p\work\ericshawleres\0921280\0570681\_Sht\_Sig.dgn

USER NAME = eric.shawler	DESIGNED -	REVISED -
	DRAWN -	REVISED -
PLOT SCALE = 0.16666833' / in.	CHECKED -	REVISED -
PLOT DATE = 1/26/2024	DATE -	REVISED -

**STATE OF ILLINOIS  
DEPARTMENT OF TRANSPORTATION**

**WIDTH RESTRICTION SIGNING  
S.N. 092-0050**

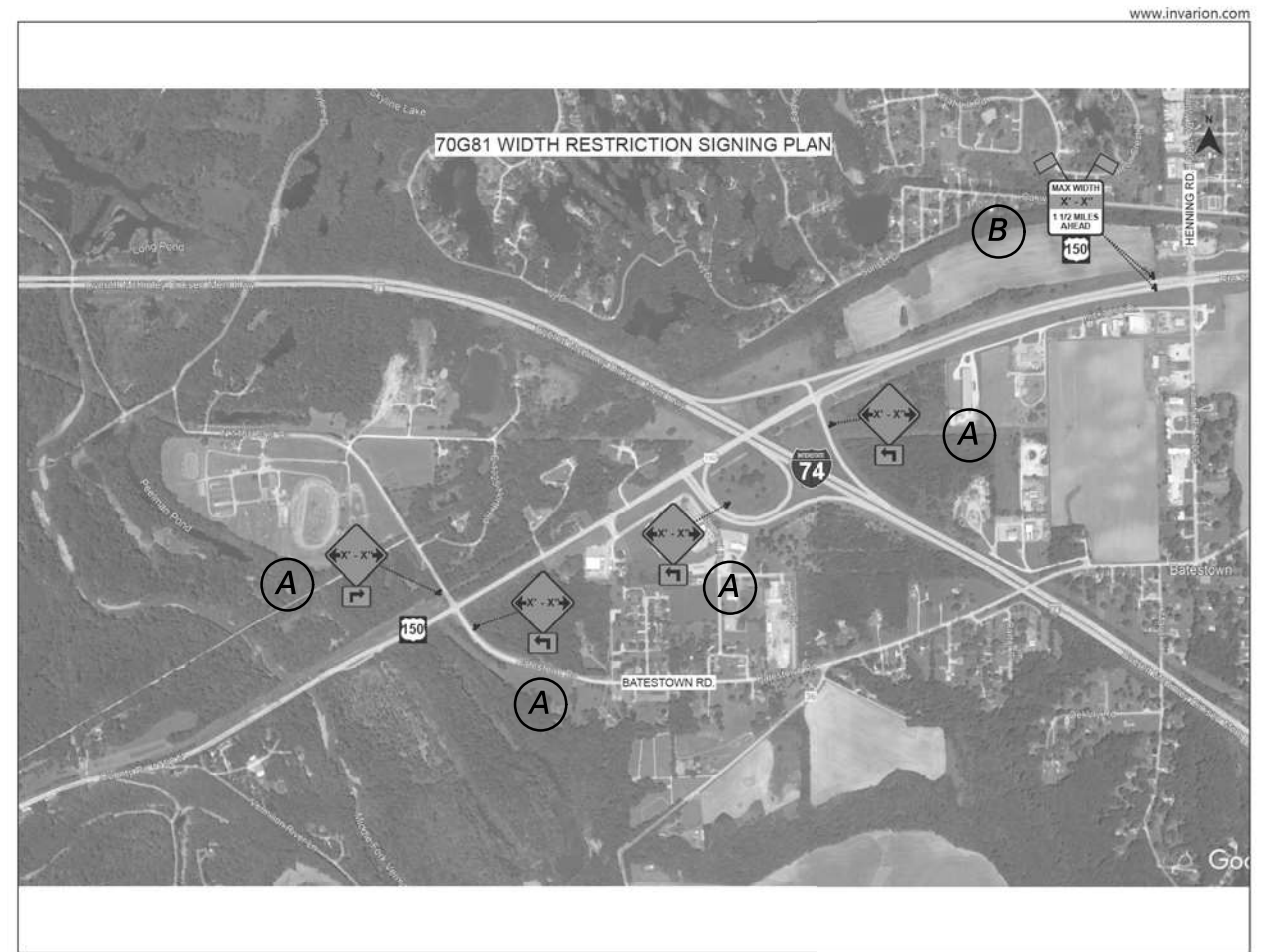
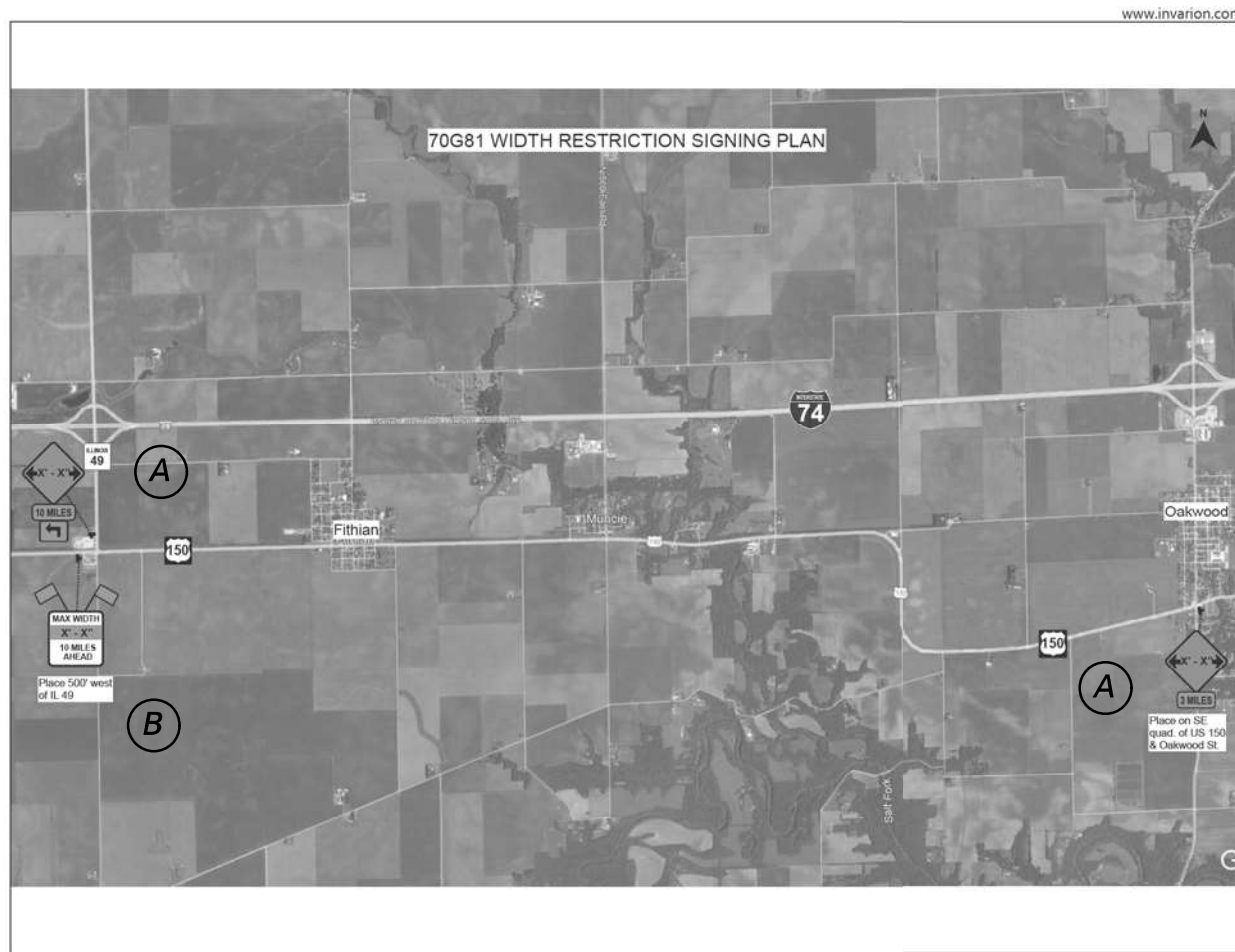
SCALE: SHEET 1 OF 2 SHEETS STA. TO STA.

F.A.S RTE.	SECTION	COUNTY	TOTAL SHEETS	SHEET NO.
1512	36 I	VERMILION	12	11
CONTRACT NO. 70G81				
ILLINOIS FED. AID PROJECT				

**WIDTH RESTRICTION SIGNING**  
**S.N. 092-0050**

**US-150 / IL-49 INTERSECTION 10 MILES WEST**

**FAI 74 / US 150 INTERCHANGE**



MODEL: Structure Sheet 9 (Sheet)  
FILE NAME: c:\p\work\ericshawleres\0921280\0570G81\_Sht\_Sht.dgn

USER NAME = eric.shawler	DESIGNED -	REVISED -
	DRAWN -	REVISED -
PLOT SCALE = 0.16666833' / in.	CHECKED -	REVISED -
PLOT DATE = 1/26/2024	DATE -	REVISED -

**STATE OF ILLINOIS**  
**DEPARTMENT OF TRANSPORTATION**

**WIDTH RESTRICTION SIGN LOCATIONS**  
**S.N. 092-0050**

SCALE: SHEET 2 OF 2 SHEETS STA. TO STA.

F.A.S RTE.	SECTION	COUNTY	TOTAL SHEETS	SHEET NO.
1512	36 I	VERMILION	12	12
CONTRACT NO. 70G81				
ILLINOIS FED. AID PROJECT				