

Illinois Department of Transportation

Asbestos Abatement Survey

Work Order No.: 21

Job Order No.: R-90-999-90

Route: N/A

Parcel No.: 0ZZ9999

NEQ & SWQ of Ohio Street Feeder @ Chicago River

Chicago, Cook County, Illinois

August 11, 2023

Asbestos Abatement Survey

Work Order No.: 21

Job Order No.: R-90-999-90

Route: N/A

Parcel No.: 0ZZ9999

NEQ & SWQ of Ohio Street Feeder @ Chicago River

Chicago, Cook County, Illinois

August 11, 2023

Prepared By:

Arcadis U.S., Inc.
200 South Michigan Avenue
Suite 2000
Chicago, Illinois 60604
Phone: 312 917 1000
Fax: 312 583 1914

Prepared For:

Illinois Department of Transportation
2300 South Dirksen Parkway
Springfield, IL 62764

Our Ref:

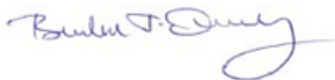
30182838



Anthony Spalla
Scientist / Asbestos Inspector



Katherine Challberg
Senior Environmental Engineer / QA/QC



Brendan J. Quealy
Principal Environmental Engineer/Certified Project Manager

This document is intended only for the use of the individual or entity for which it was prepared and may contain information that is privileged, confidential and exempt from disclosure under applicable law. Any dissemination, distribution or copying of this document is strictly prohibited.

Contents

Acronyms and Abbreviations.....	ii
1 Introduction.....	1
2 Survey Methodology	1
3 Analytical Methods.....	1
4 Findings.....	2
5 Recommendations.....	2
6 Cost Estimate.....	3
7 Additional Survey Limitations.....	4

Tables

Table 1 Asbestos Homogeneous Areas Summary

Figures

Figures 1-2 Overall Bridge Tender House Plans
Figures 3-5 Asbestos Bulk Sampling Locations
Figure 6-8 Asbestos-Containing Materials Locations

Appendices

Appendix A Limitations and Service Constraints
Appendix B Accreditations - Inspector, Laboratory
Appendix C Laboratory Reports – Asbestos
Appendix D Photograph Log

Acronyms and Abbreviations

ACM	asbestos-containing material
AHERA	Asbestos Hazard Emergency Response Act
Arcadis	Arcadis U.S., Inc.
ASTM	ASTM International
CFR	Code of Federal Regulations
COC	chain of custody
DS	dispersion staining
HA	homogeneous area
IAC	Illinois Administrative Code
IDPH	Illinois Department of Public Health
IDOT	Illinois Department of Transportation
IEPA	Illinois Environmental Protection Agency
NESHAP	National Emissions Standards for Hazardous Air Pollutant
NIOSH	National Institute for Occupational Safety and Health
NVLAP	National Voluntary Laboratory Accreditation Program
OSHA	Occupational Safety and Health Administration
PLM	polarized light microscopy
PPE	personal protective equipment
QA/QC	quality control/quality assurance
STAT	STAT Analysis Corporation of Chicago, Illinois
USEPA	United States Environmental Protection Agency

1 Introduction

Arcadis U.S., Inc. (Arcadis) conducted an asbestos abatement survey (survey) at Parcel No. 0ZZ9999 located at NEQ & SWQ of Ohio Street Feeder @ Chicago River in Chicago, Cook County, Illinois (Site) in accordance with Work Order No. 21 under the Prime Agreement for Consulting Services for PTB No. 202-043 between Illinois Department of Transportation (IDOT) and Arcadis. Arcadis' services and report are subject to the Limitations and Service Constraints provided in **Appendix A**.

The Site includes two five-story bridge tender houses (northeast and southwest) associated with the Ohio Street bascule bridge constructed in 1956.

The objective of the survey was to ascertain the general presence, quantity, and location of asbestos-containing materials (ACMs) at the site that may be impacted by the planned demolition and provide preliminary cost estimates for asbestos abatement that may be required prior to demolition activities.

The survey activities were conducted on June 5, 2023, by Anthony Spalla of Arcadis U.S., Inc. (Arcadis) and Patrick Hook of A3 Environmental LLC. (A3E), an Arcadis sub-consultant. Copies of their accreditations are provided in **Appendix B**.

2 Survey Methodology

Arcadis conducted the asbestos survey in compliance with the United States Environmental Protection Agency (USEPA) National Emissions Standards for Hazardous Air Pollutants (NESHAPs), applicable State of Illinois and local asbestos regulations. This was accomplished by conducting a visual inspection of the structures to be impacted by the planned demolition and collecting samples of suspect ACM based on these observations.

Arcadis conducted the asbestos survey in general accordance with ASTM International (ASTM) E2356 Standard Practice for Comprehensive Building Asbestos Surveys. ASTM E2356 meets the applicable asbestos survey and/or sampling requirements of current USEPA NESHAP Standard [40 Code of Federal Regulations (CFR) 61, Subpart M (Asbestos)], USEPA Asbestos Hazard Emergency Response Act (AHERA) [40 CFR 763, Subpart E], and Occupational Safety and Health Administration (OSHA) Asbestos Construction Standard [29 CFR 1926.1101].

The survey included an inspection of the structures to be impacted by the planned demolition providing a general sense of the overall location, type, quantity, and condition of suspect ACMs present. The asbestos survey included a visual and physical assessment of each accessible space to locate suspect ACMs. Suspect materials were divided into "Homogeneous Areas" (HAs) (i.e., materials that were determined by the inspector to be homogeneous based on their color, texture, and assumed date of installation).

A representative number of samples were collected from each HA. Bulk material samples were collected in 4-milliliter plastic bags, and tightly sealed for transport to STAT Analysis Corporation (STAT) in Chicago, Illinois. Each sample collected by Arcadis was assigned its own unique coded number and sent for laboratory analysis under a chain-of-custody (COC) protocol.

The survey included destructive, intrusive, and/or exploratory testing unless specifically prohibited by IDOT. Destructive sampling is performed in order to identify materials which are hidden or obstructed. Hidden or obstructed areas include but are not limited to wall cavities, pipe chases, spaces above fixed ceilings, materials located under carpeting or subfloors, and ceramic tile grout/adhesive.

3 Analytical Methods

Asbestos bulk samples were analyzed for asbestos (reported in percent of type of asbestos) using polarized light microscopy with dispersion staining (PLM/DS) in accordance with the USEPA Method 600/R-93/116. Percentage

estimates of each material's composition are based on the analyst's best visual judgment following PLM/DS analysis, and examination with a stereoscope.

STAT is accredited under the National Voluntary Laboratory Accreditation Program (NVLAP). A copy of their NVLAP Certificate of Accreditation is provided in **Appendix B**. Laboratory analytical reports are provided in **Appendix C**.

4 Findings

Arcadis inspected both the northeast and southwest bridge tender houses, observed identical building materials, and determined to collect materials from the southwest bridge house for purposes of this survey.

Arcadis identified thirteen (13) HAs from which thirty-three (33) samples were collected and analyzed. A listing of the identified HAs, including each HA material description, location, sample number, condition, asbestos content, and estimated quantity, are presented in Table 1. Overall bridge tender house plans are shown on Figures 1-2, approximate sampling locations are shown on Figures 3-5 and locations of identified ACM are shown on Figure 6-8.

The USEPA defines ACM as a material containing greater than 1% asbestos. Materials containing less than 1% asbestos are not regulated by the USEPA or the State of Illinois, but their disturbance is regulated by OSHA.

The following HAs have been confirmed to be ACM:

- HA-4: White Transite Panels on the east side of the southwest bridge tender house and the west side of the northeast bridge tender house.
- HA-10: White Air Cell Pipe Insulation in the bathrooms, boiler rooms and stairwells.

The following HAs are assumed to be ACM:

- HA-12: Dark Red Fire Doors in electrical control rooms.
- HA-13: Transite Flue/Vent in electric control rooms, bathrooms and operator rooms.

The remaining bulk samples collected by Arcadis as part of the survey were reported by the laboratory to be ND = Asbestos Not Detected (Not Present).

Representative photographs are provided in **Appendix D**.

5 Recommendations

ACMs identified at the site that may be disturbed during demolition activities, must be removed by a licensed asbestos abatement contractor utilizing industry standard work procedures in accordance with all federal, state, and local regulations governing asbestos.

If other suspect materials not referenced in this survey report are identified during demolition activities, we recommend these materials be assumed ACM until the materials are inspected by a licensed asbestos inspector, sampled, and submitted for laboratory analysis.

6 Cost Estimate

Arcadis prepared this rough order of magnitude (ROM) opinion of cost to support planned asbestos abatement activities at the Site prior to building demolition.

ROUGH ORDER OF MAGNITUDE OPINION OF ASBESTOS ABATEMENT COSTS		
ASBESTOS ABATEMENT COSTS		
Item	Estimated Cost	Estimated Duration (Days)
Removal/disposal of identified ACM	\$47,000.00	5
Removal/disposal of assumed ACM	\$9,000.00	2
Sub-Total Estimated Abatement Costs	\$56,000.00	7
Contingency (15%)	\$8,400.00	n/a
Total Estimated Abatement Costs	\$64,400.00	7
ASBESTOS OVERSIGHT COSTS		
Item	Estimated Cost	Estimated Duration (Days)
Project Management/Coordination/Reporting	\$3,500.00	n/a
ACM Abatement Oversight (including equipment and analysis)	\$10,500.00	7
Sub-Total Estimated Oversight Costs	\$14,000.00	7
Contingency (15%)	\$2,100.00	n/a
Total Estimated Oversight Costs	\$16,100.00	7
TOTAL ESTIMATED PROJECT COST (WITH 15% CONTINGENCY)	\$80,500.00	7

The above ROM opinion of cost is based on the following assumptions:

- Cost estimate is based on the information identified in Arcadis' survey report.
- Cost estimate includes permits, labor, equipment, waste transport and disposal.
- Cost estimate assumes work will be awarded in its entirety to one contractor and completed during a single mobilization.
- Cost estimate includes consulting fees such as project management, project oversight, air sampling, etc.
- Actual bids and schedule durations may vary.
- Oversight costs are dependent upon the project duration which may vary depending on the contractor's schedule and is outside of Arcadis' control.

7 Additional Survey Limitations

Arcadis' survey is subject to the following survey limitations.

- The investigation did not include access or inspection of confined spaces, underground piping, conduits, and building footings, if any.
- If other suspect materials, not referenced in this survey report, are identified during renovation or demolition activities, Arcadis recommends that these materials be considered regulated until they are inspected by an appropriately certified inspector and proven otherwise.
- Utilities/services, including electric, water, and heat, were active in most areas surveyed. Materials associated with electrical components and energized equipment were not safely accessible and were not sampled.
- Due to the fact that the two structures were identical in construction, sampling conducted at one structure was used to assess the asbestos content at both structures.

Table

Table 1. Asbestos Homogeneous Areas Summary
IDOT - Asbestos Abatement Survey
WO # 21
NEQ SWQ of Ohio Street Feeder @ Chicago River, Chicago, IL

HA No.	Material Description	Material Location	Sample Number	Condition	Friability	Asbestos Content	Estimated Quantity	Unit	Notes
1	Red Exterior Brick	Exterior Bridge Tender Houses	1A, 1B, 1C	Good	Non-Friable	NAD	3,600	SF	Samples were collected from the southwest bridge tender house but quantities include both houses.
2	Gray Mortar associated with HA-1	Exterior Bridge Tender Houses	2A, 2B, 2C	Good	Non-Friable	NAD	3,600	SF	Samples were collected from the southwest bridge tender house but quantities include both houses.
3	Gray Concrete Foundation and Walls	Interior and Exterior Bridge Tender Houses	3A, 3B, 3C	Good	Non-Friable	NAD	4,680	SF	Samples were collected from the southwest bridge tender house but quantities include both houses.
4	White Transite Panels	East Side of the Southwest Bridge Tender House and West side of the Northeast Bridge Tender House	4A, 4B, 4C	Damaged	Non-Friable	Chrysotile 10 - 15%	3,000	SF	Samples were collected from the southwest bridge tender house but quantities include both houses.
5	Gray 12 x 12 Floor Tile	5th Floor Operator Rooms	5A, 5B, 5C	Good	Non-Friable	NAD	338	SF	Samples were collected from the southwest bridge tender house but quantities include both houses.
6	Yellow Floor Tile Mastic associated with HA-5	5th Floor Operator Rooms	6A, 6B, 6C	Good	Non-Friable	NAD	338	SF	Samples were collected from the southwest bridge tender house but quantities include both houses.
7	White Window Frame Caulk	5th Floor Operator Rooms	7A, 7B, 7C	Good	Non-Friable	NAD	104	LF	Samples were collected from the southwest bridge tender house but quantities include both houses.
8	White Gypsum Board Ceiling Panels	5th Floor Operator Rooms	8A, 8B, 8C	Good	Non-Friable	NAD	338	SF	Samples were collected from the southwest bridge tender house but quantities include both houses.
9	Yellow Cove Base Mastic	5th Floor Operator Rooms	9A, 9B, 9C	Good	Non-Friable	NAD	104	LF	Samples were collected from the southwest bridge tender house but quantities include both houses.
10	White Air Cell Pipe Insulation	Bathrooms (4LF), Boiler Rooms (130LF), Stairwells (80 LF)	10A, 10B, 10C	Good	Friable	Chrysotile 10 - 15%	214	LF	Samples were collected from the southwest bridge tender house but quantities include both houses.

Table 1. Asbestos Homogeneous Areas Summary
IDOT - Asbestos Abatement Survey
WO # 21
NEQ SWQ of Ohio Street Feeder @ Chicago River, Chicago, IL

HA No.	Material Description	Material Location	Sample Number	Condition	Friability	Asbestos Content	Estimated Quantity	Unit	Notes
11	White Hard Pack Fitting	Bathrooms, Boiler Rooms, Stairwells	11A, 11B, 11C	Good	Friable	NAD	54	LF	Samples were collected from the southwest bridge tender house but quantities include both houses.
12	Dark Red Fire Doors	3rd Floor Electric Control Rooms	Not Sampled	Good	Non-Friable	Assumed ACM	4	EA	
13	Transite Flue/Vent	Electric Control Rooms, Bathrooms, Operator Rooms	Not Sampled	Not Visible	Non-Friable	Assumed ACM	40	LF	Vertical Flue Runs from the 3rd Floor Electric Control Rooms, through the 4th Floor Bathrooms to the 5th Floor Operator Rooms.

Notes:

ACM = Asbestos-Containing Material

Assumed ACM = A material determined by the inspector to be suspect ACM and is considered asbestos-containing until laboratory analysis can prove otherwise.

NAD = No Asbestos Detected

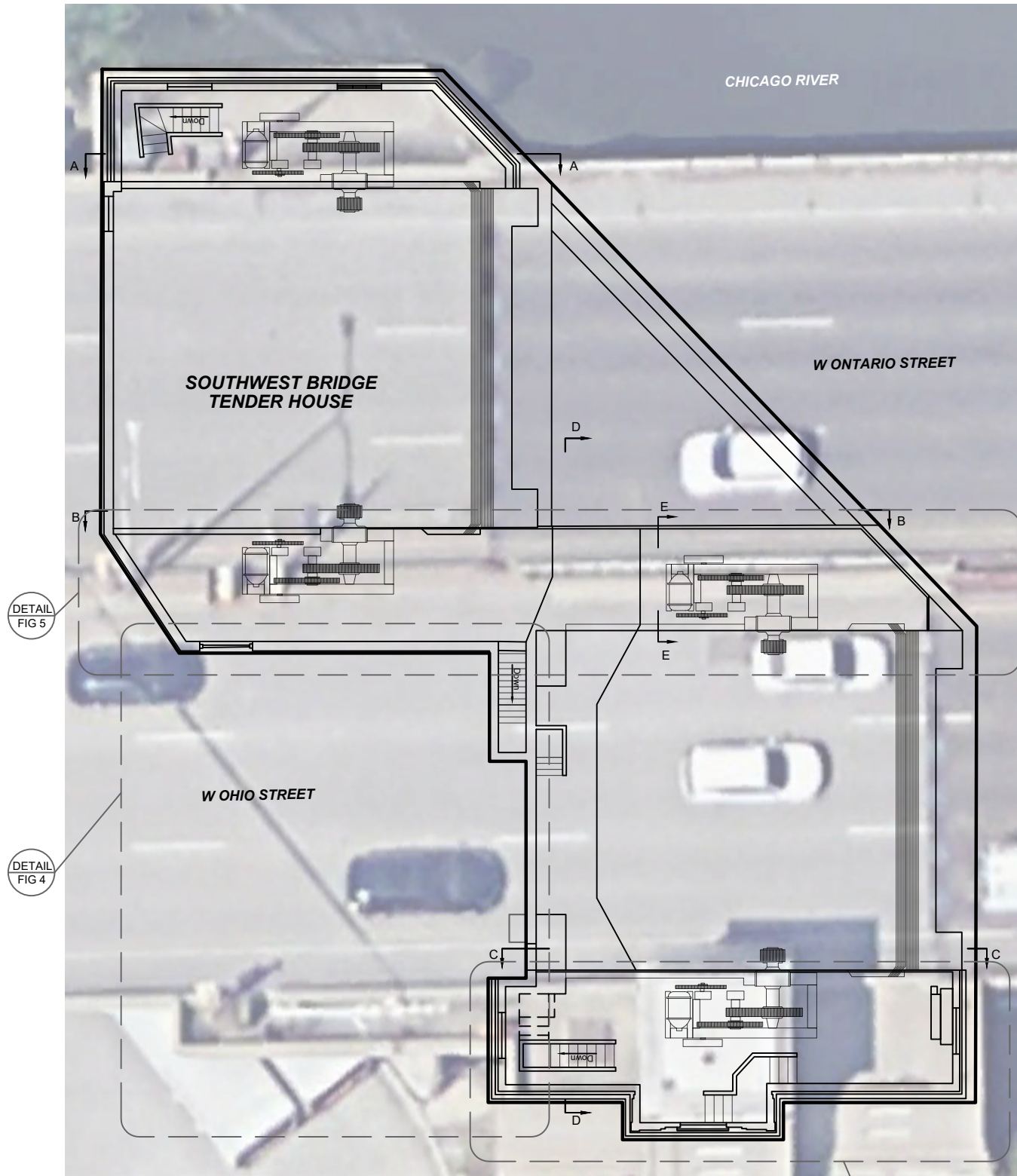
EA = Each

LF = Linear Foot

SF = Square Foot

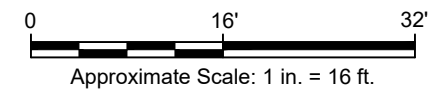
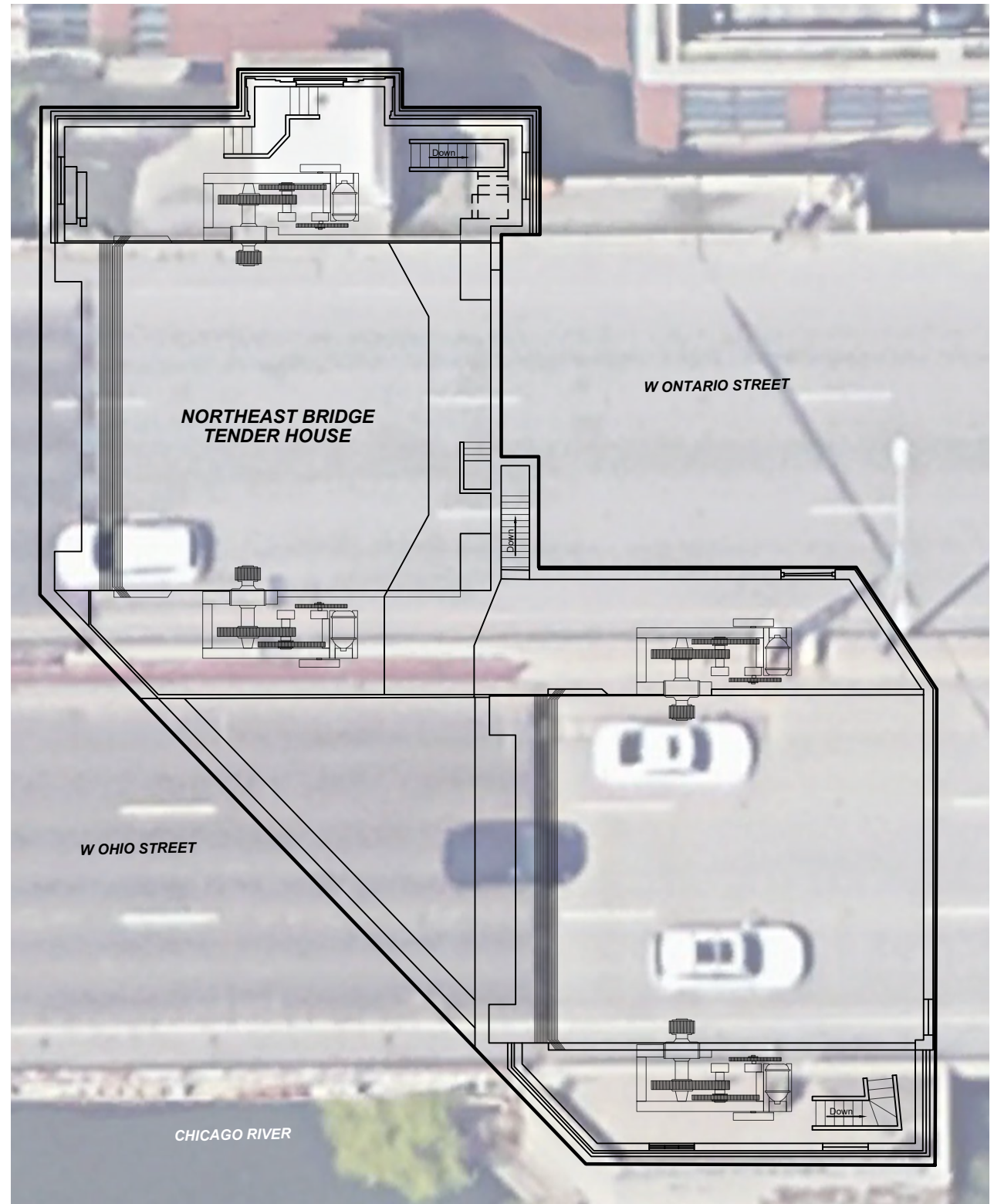
Figures

XREFS: PROJECTNAME: A3E Logo 2022_v4_Green Arrow color_Black Letters.png AERIAL.jpg EAST GOOGLE.jpg



SECTION AND DETAIL VIEWS
West side shown, East side symmetrical by rotation

DETAIL FIG 3

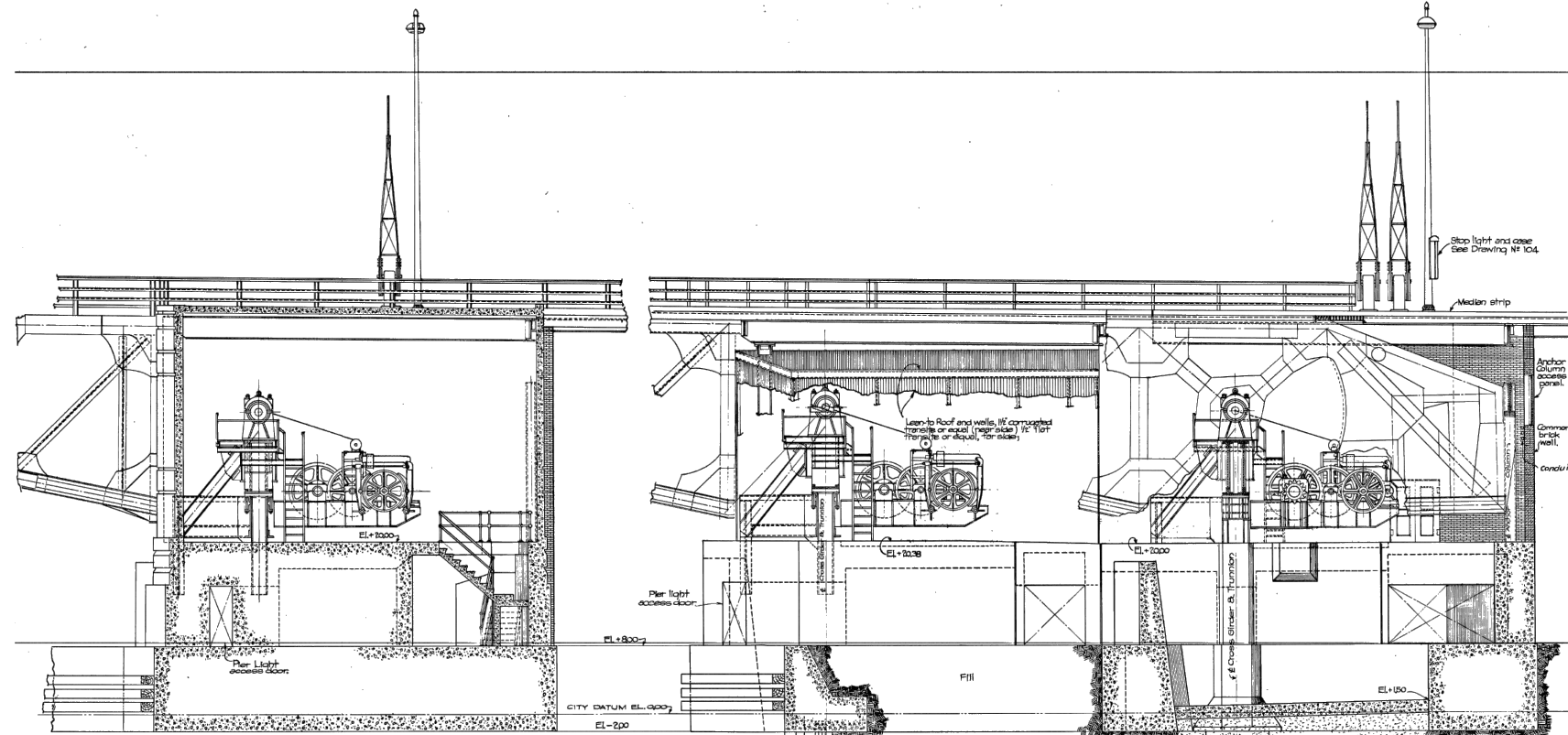


NOTE
BASE MAP DEVELOPED FROM GOOGLE EARTH AERIAL IMAGERY, ONSITE INVESTIGATION & PLANS FOR PROPOSED FEDERAL AID HIGHWAY (DATED 11/16/1955)



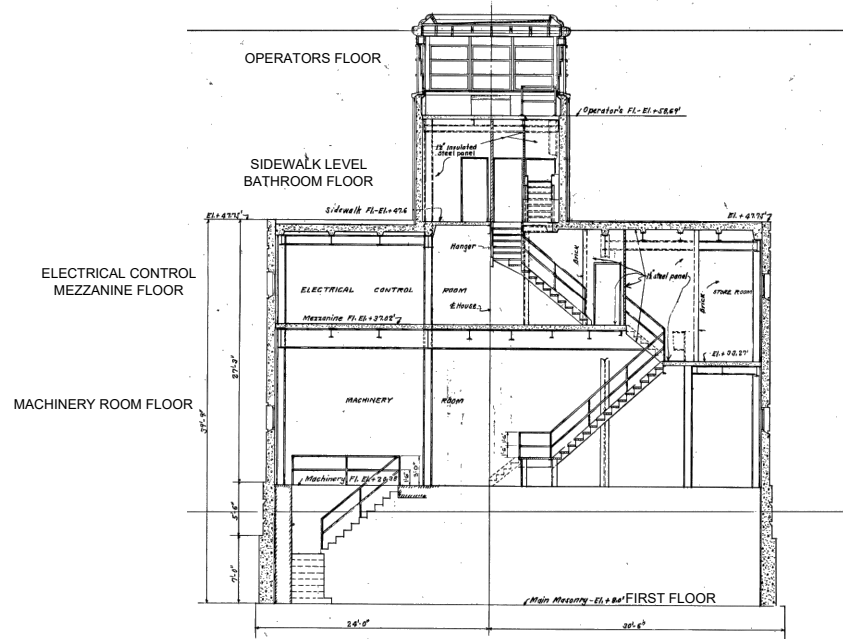
30182838 - IDOT / Asbestos Surveys WO #21 PARCEL 0ZZ9999 NEQ & SWQ of Ohio Street Feeder @ Chicago River CHICAGO, COOK COUNTY, ILLINOIS ASBESTOS ABATEMENT SURVEY	
OVERALL BRIDGE TENDER HOUSE PLANS	
	FIGURE 1

PROJECTNAME: ---
 IMAGES: A3E Logo 2022_v4_Green Arrow color_Black Letters.png
 AERIAL.jpg
 EAST GOOGLE.jpg
 XREFS:

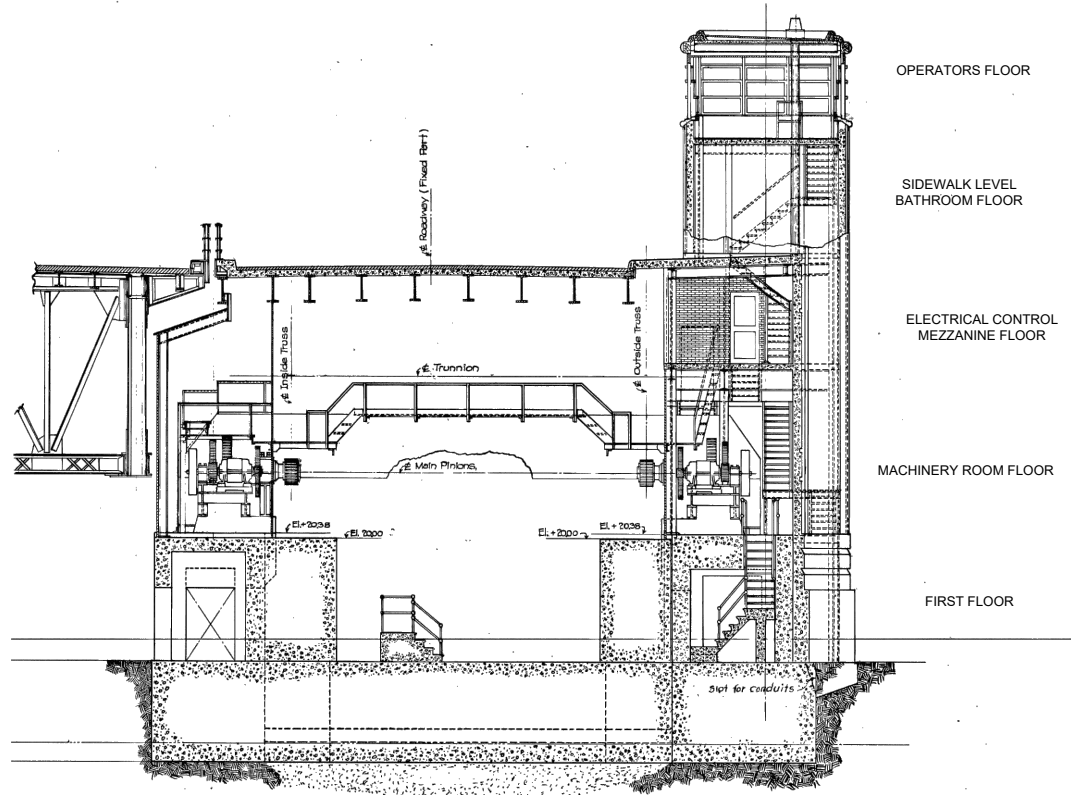


SECTION A-A

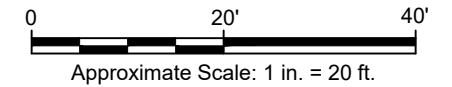
SECTION B-B



SECTION C-C



SECTION D-D



NOTE

BASE MAP DEVELOPED FROM PLANS FOR PROPOSED FEDERAL AID HIGHWAY (DATED 11/16/1955)

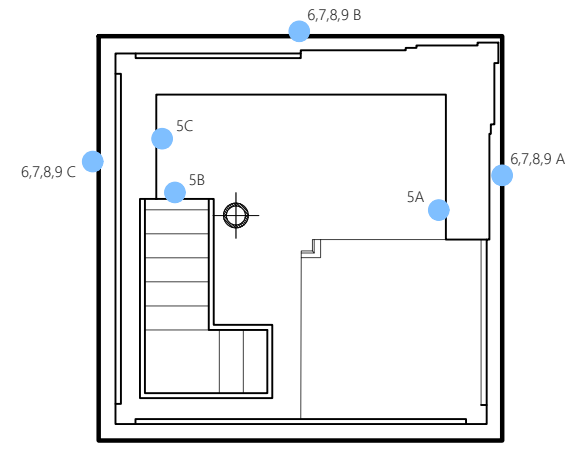
30182838 - IDOT / Asbestos Surveys WO #21
 PARCEL 0ZZ9999
 NEQ & SWQ of Ohio Street Feeder @ Chicago River
 CHICAGO, COOK COUNTY, ILLINOIS
ASBESTOS ABATEMENT SURVEY

**BRIDGE TENDER HOUSE
 SECTION VIEWS**

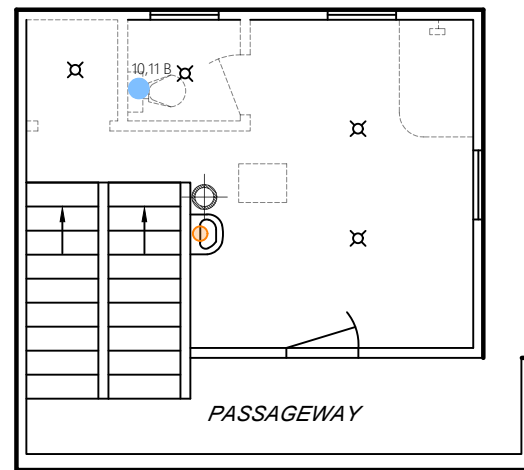


FIGURE

2

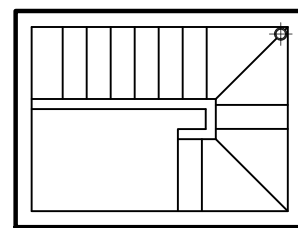


OPERATOR ROOM - 5th FLOOR

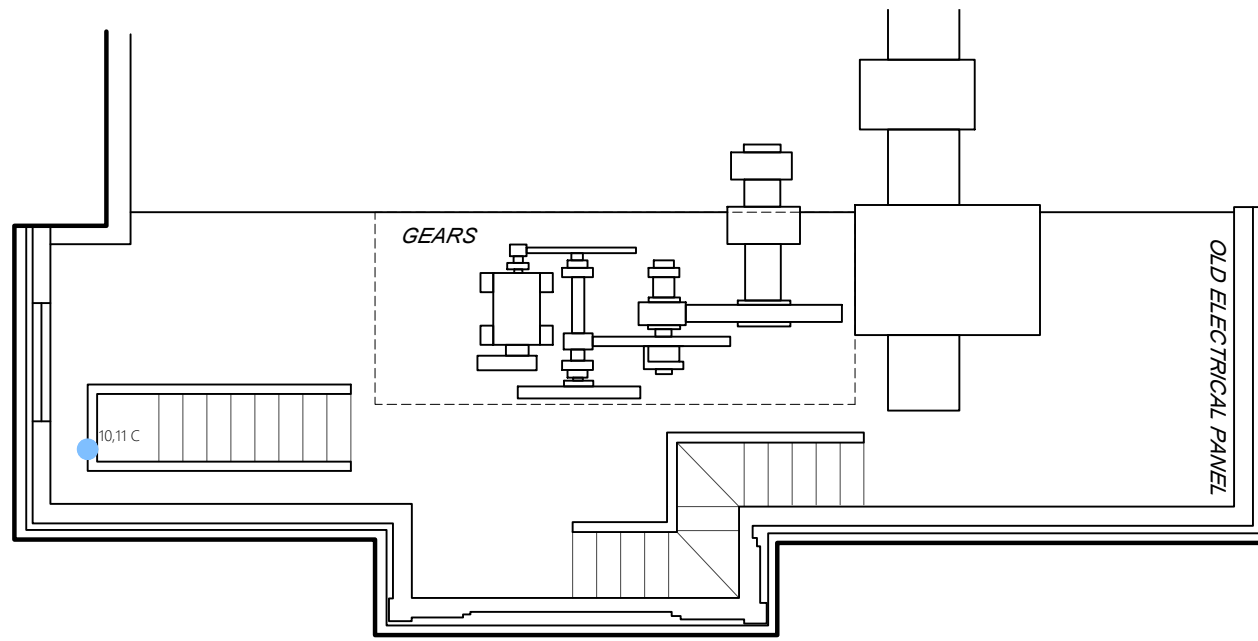


SIDEWALK LEVEL BATHROOM - 4th FLOOR

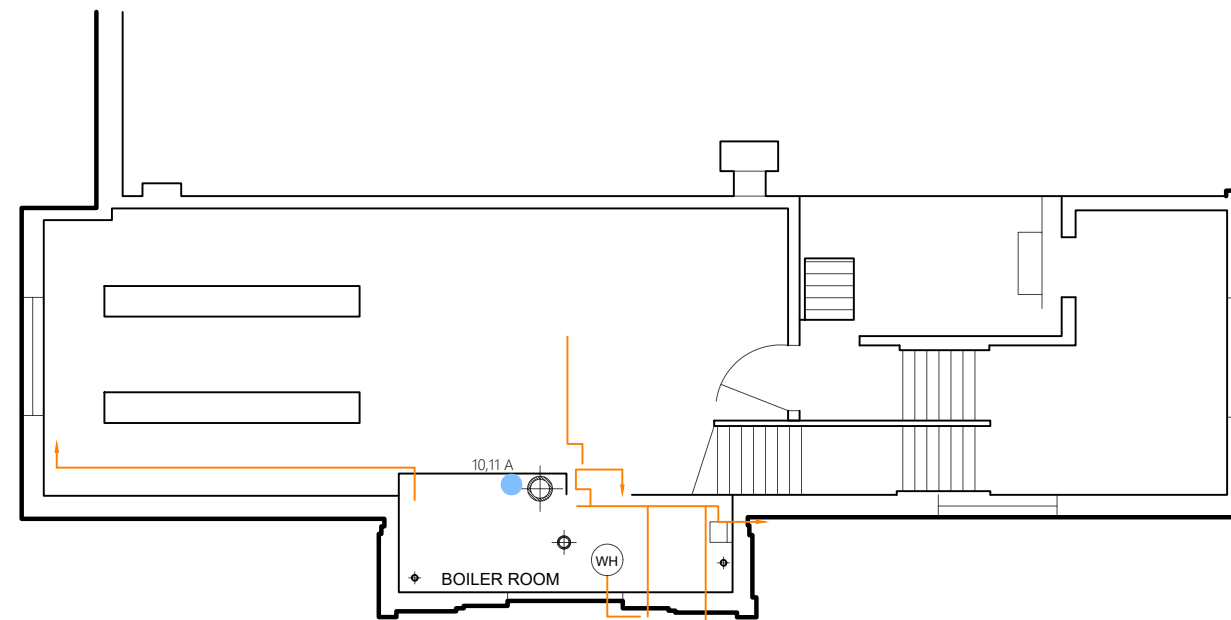
NOTE
DASHED LINES INDICATES PREVIOUSLY REMOVED



FIRST FLOOR - 1st FLOOR



MECHANICAL ROOM - 2nd FLOOR



ELECTRICAL CONTROL ROOM - 3rd FLOOR

- LEGEND**
- ASBESTOS SAMPLE
 - WH WATER HEATER
 - PIPE WRAP/FITTINGS

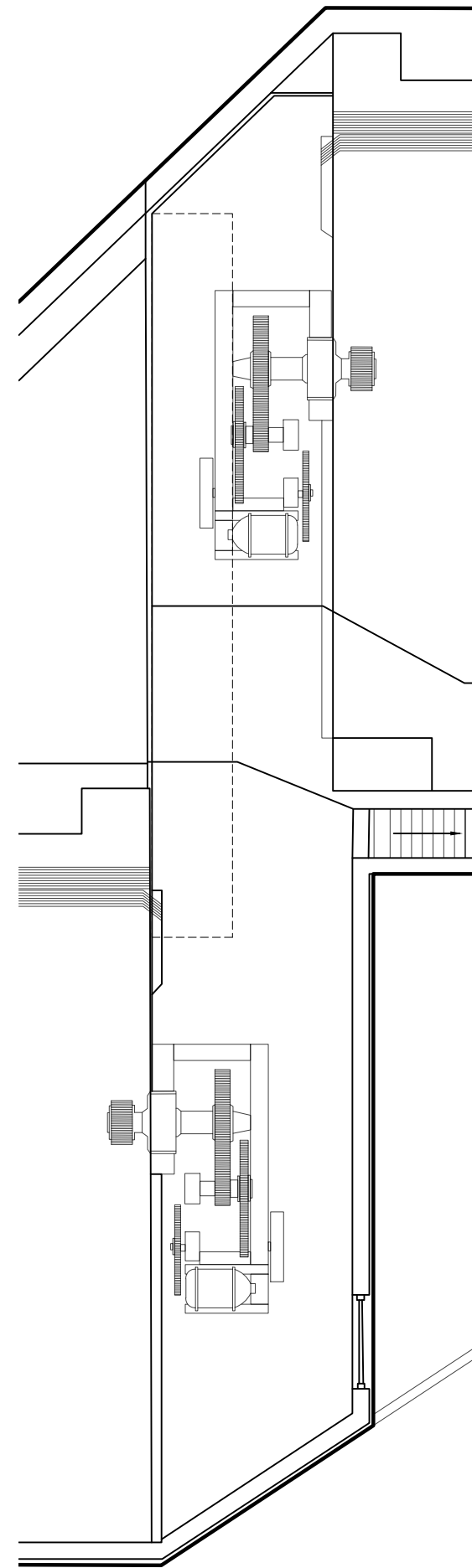


NOTE
BASE MAP DEVELOPED FROM GOOGLE EARTH AERIAL IMAGERY, ONSITE INVESTIGATION & PLANS FOR PROPOSED FEDERAL AID HIGHWAY (DATED 11/16/1955)

30182838 - IDOT / Asbestos Surveys WO #21
PARCEL 0ZZ9999
NEQ & SWQ of Ohio Street Feeder @ Chicago River
CHICAGO, COOK COUNTY, ILLINOIS
ASBESTOS ABATEMENT SURVEY

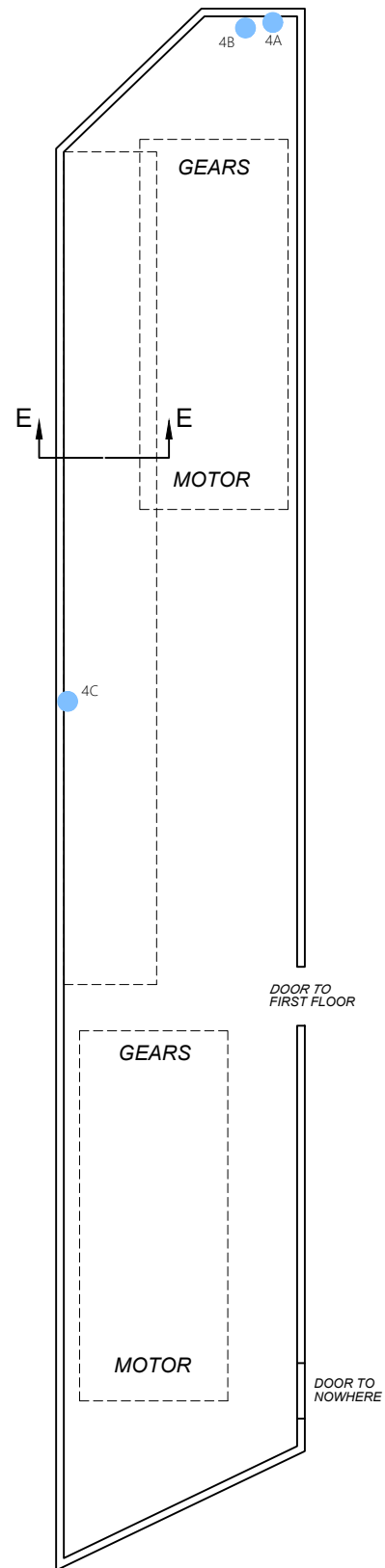
TENDER HOUSE FLOOR PLANS & ASBESTOS SAMPLE LOCATIONS





DETAIL A - MACHINERY SPACE

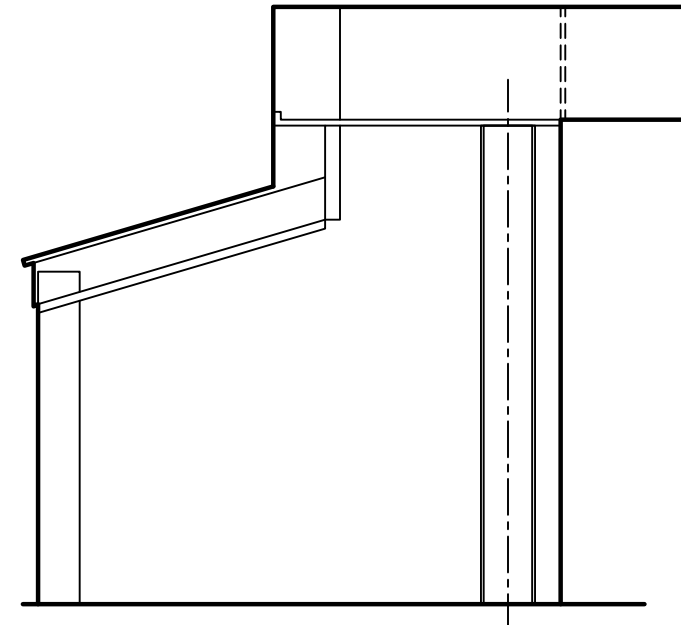
GENERAL PLAN OF MACHINERY & ENCLOSURES
 West side shown, East side symmetrical
 by rotation



DETAIL B - MACHINERY SPACE 2nd FLOOR

LEGEND

● ASBESTOS SAMPLE



SECTION E-E
 Scale: 1 in. = 4 ft.



NOTE

BASE MAP DEVELOPED FROM GOOGLE EARTH AERIAL IMAGERY, ONSITE INVESTIGATION & PLANS FOR PROPOSED FEDERAL AID HIGHWAY (DATED 11/16/1955)

30182838 - IDOT / Asbestos Surveys WO #21
 PARCEL 0ZZ9999
 NEQ & SWQ of Ohio Street Feeder @ Chicago River
 CHICAGO, COOK COUNTY, ILLINOIS
ASBESTOS ABATEMENT SURVEY

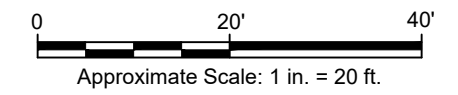
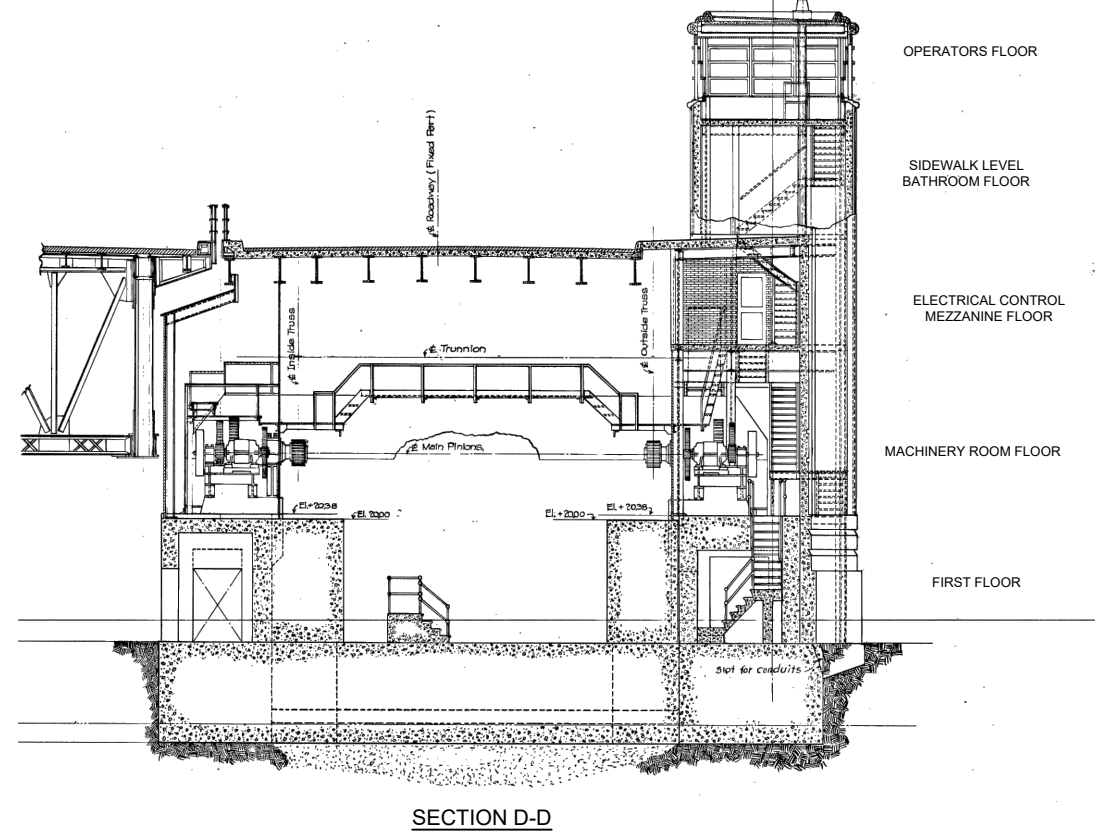
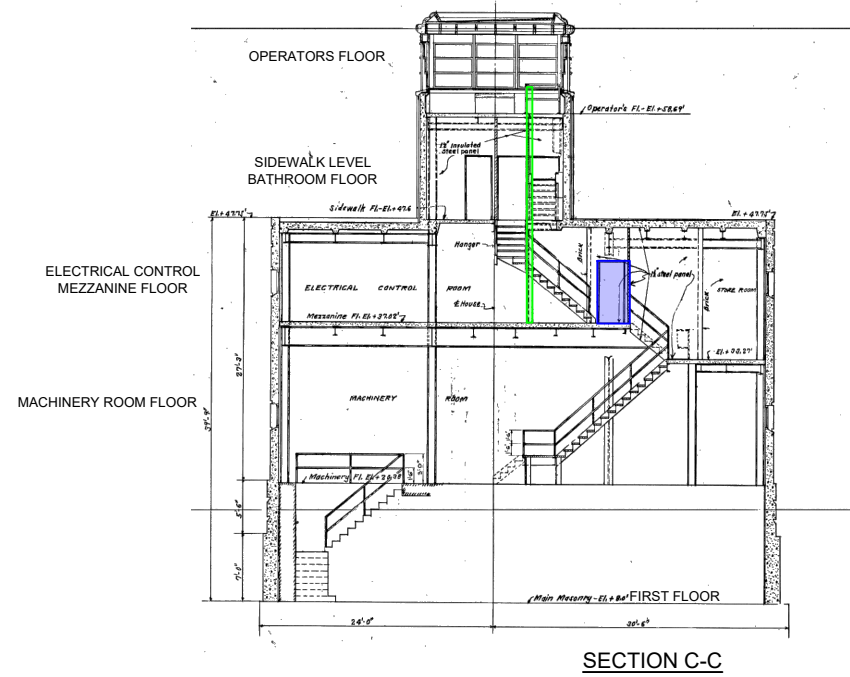
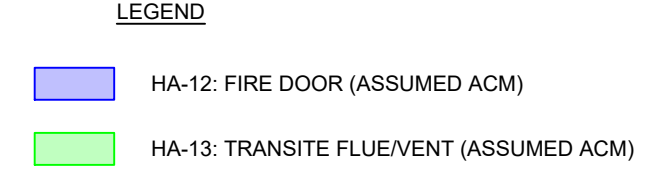
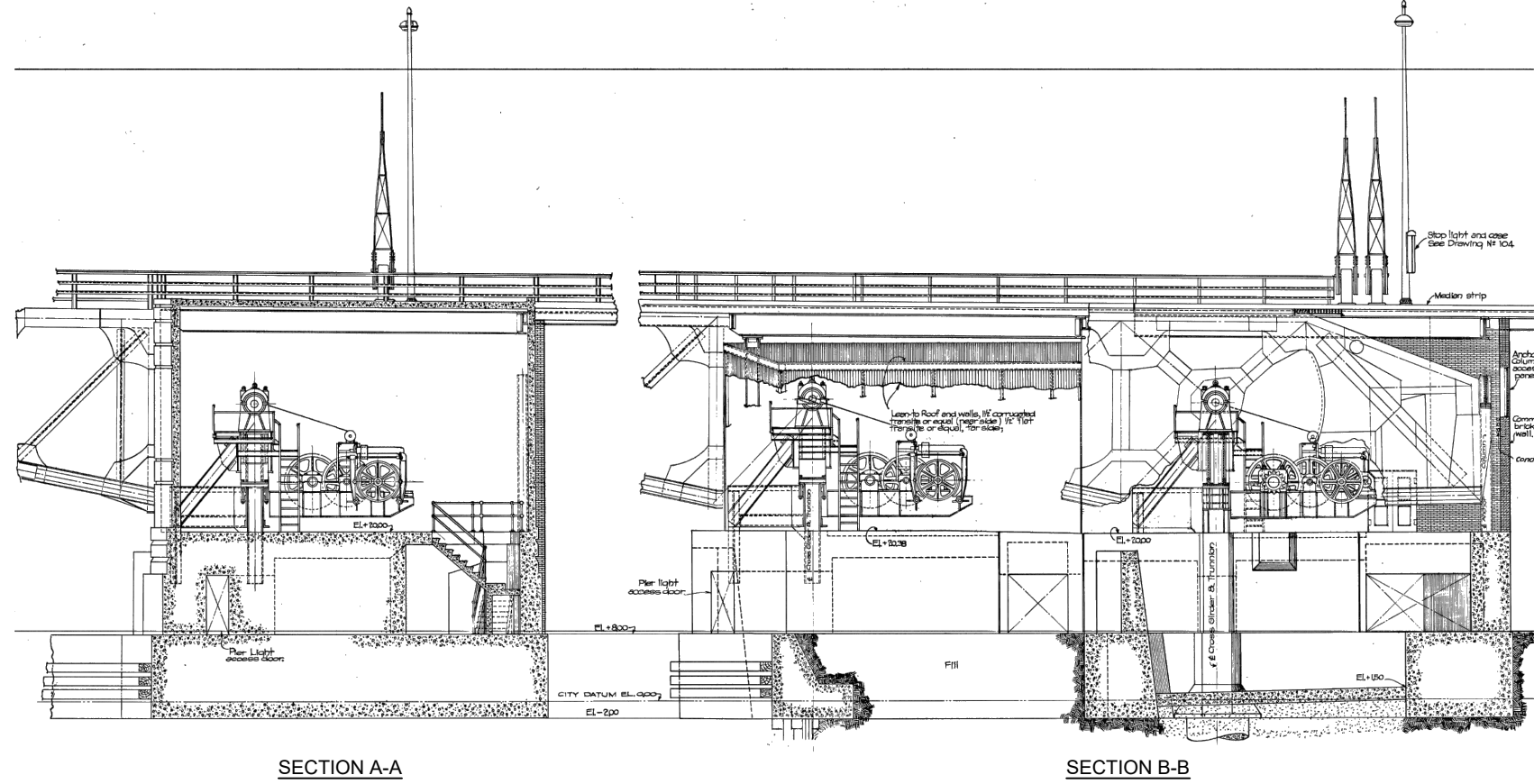
**TENDER HOUSE DETAIL
 ASBESTOS SAMPLE LOCATIONS**



FIGURE

5

PROJECTNAME: ---
 IMAGES: A3E Logo 2022_v4_Green Arrow color_Black Letters.png
 AERIAL.jpg
 EAST GOOGLE.jpg



NOTE
 BASE MAP DEVELOPED FROM PLANS FOR PROPOSED FEDERAL AID HIGHWAY (DATED 11/16/1955)

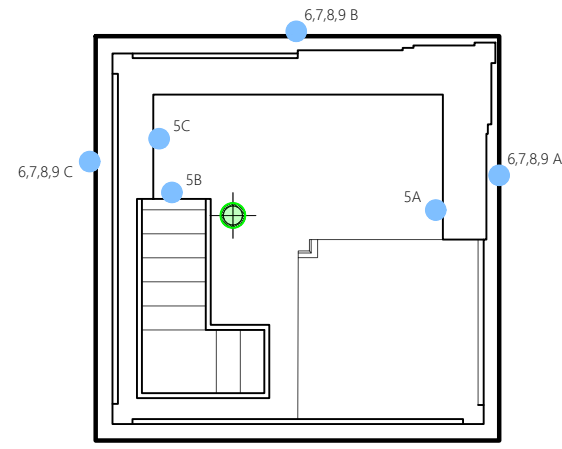
30182838 - IDOT / Asbestos Surveys WO #21
 PARCEL 0ZZ9999
 NEQ & SWQ of Ohio Street Feeder @ Chicago River
 CHICAGO, COOK COUNTY, ILLINOIS
ASBESTOS ABATEMENT SURVEY

**BRIDGE TENDER HOUSE VIEWS -
 ASBESTOS CONTAINING MATERIAL
 LOCATIONS**

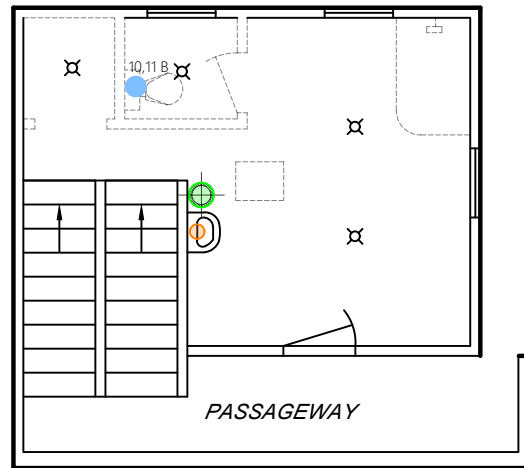
ARCADIS

FIGURE
6

XREFS:
 IMAGES: PROJECTNAME: ---
 A3E Logo 2022_v4_Green Arrow color_Black Letters.png
 AERIAL.jpg
 EAST GOOGLE.jpg

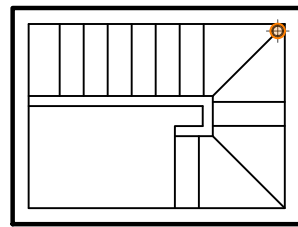


OPERATOR ROOM - 5th FLOOR

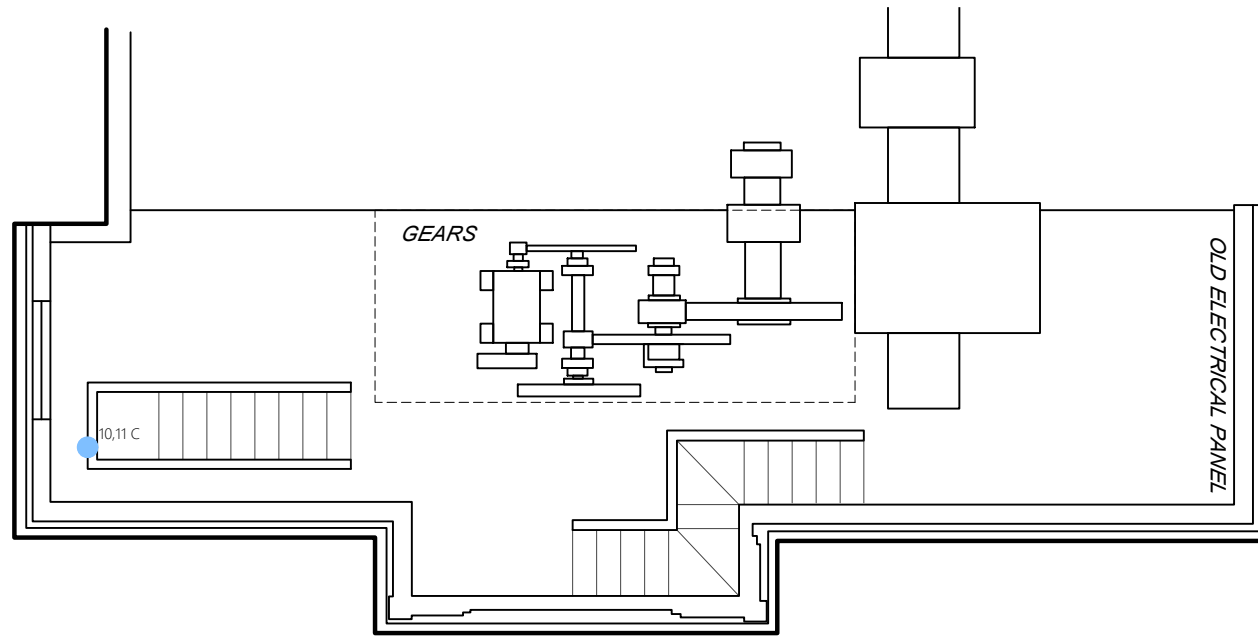


SIDEWALK LEVEL BATHROOM - 4th FLOOR

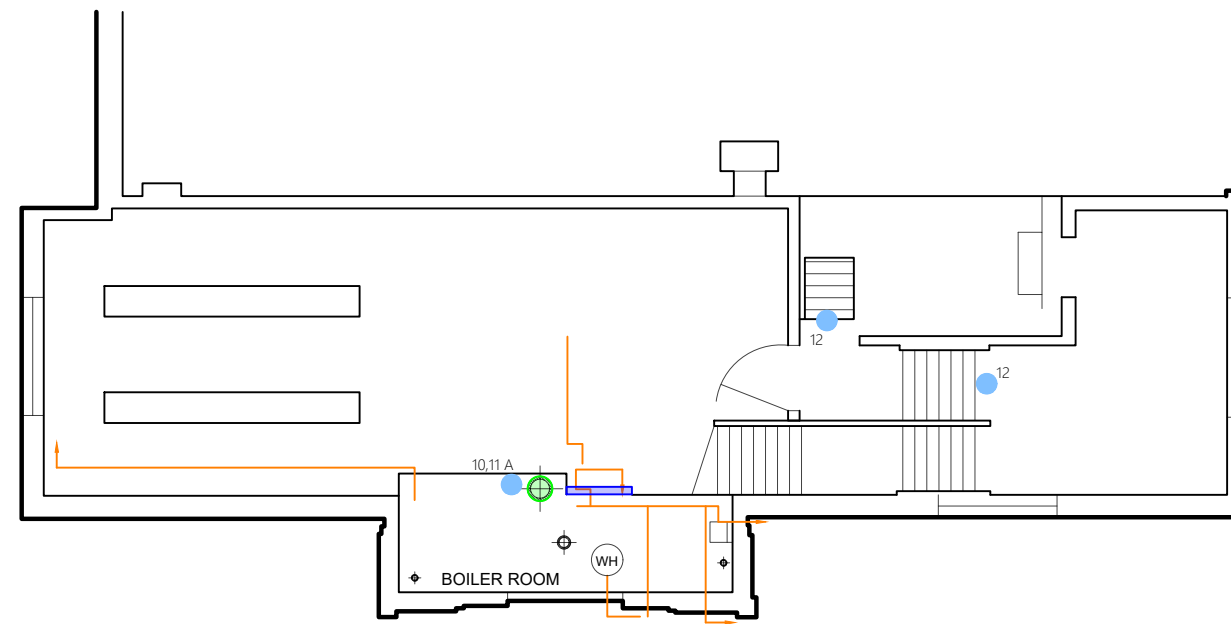
NOTE
 DASHED LINES INDICATES PREVIOUSLY REMOVED



FIRST FLOOR - 1st FLOOR



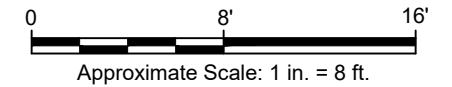
MECHANICAL ROOM - 2nd FLOOR



ELECTRICAL CONTROL ROOM - 3rd FLOOR

NOTE
 BASE MAP DEVELOPED FROM GOOGLE EARTH AERIAL IMAGERY, ONSITE INVESTIGATION & PLANS FOR PROPOSED FEDERAL AID HIGHWAY (DATED 11/16/1955)

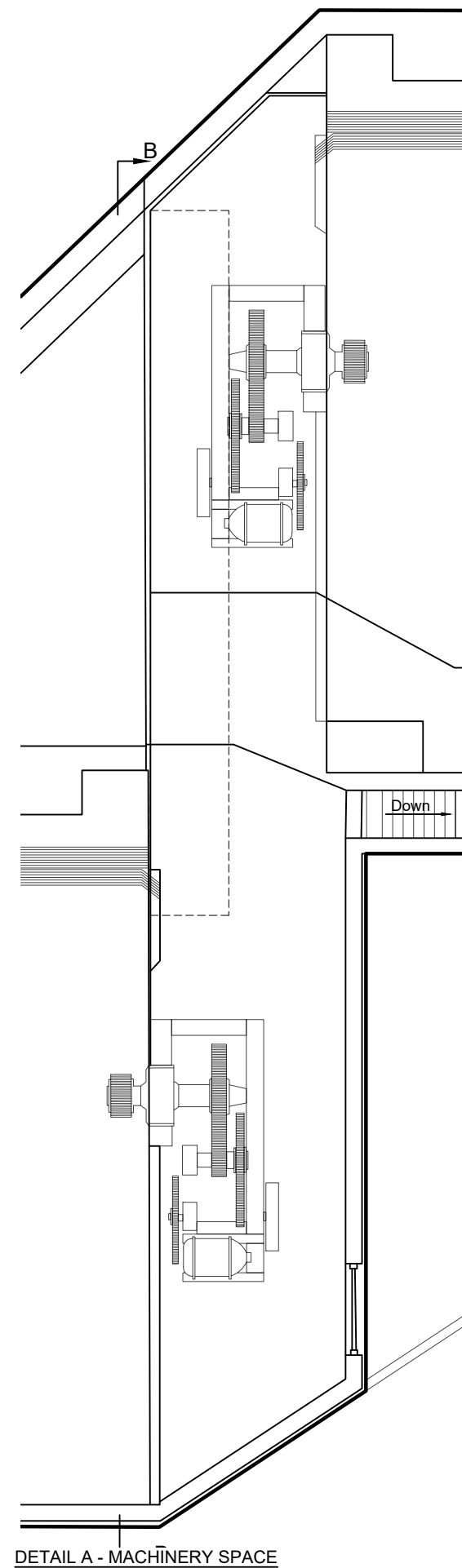
- LEGEND**
- ASBESTOS SAMPLE
 - WH WATER HEATER
 - HA-10: ACM AIR CELL PIPE INSULATION AND ASSOCIATED HA-11: NON-ACM FITTINGS
 - HA-12: FIRE DOOR (ASSUMED ACM)
 - HA-13: TRANSITE FLUE/VENT (ASSUMED ACM)



30182838 - IDOT / Asbestos Surveys WO #21
 PARCEL 0ZZ9999
 NEQ & SWQ of Ohio Street Feeder @ Chicago River
 CHICAGO, COOK COUNTY, ILLINOIS
ASBESTOS ABATEMENT SURVEY

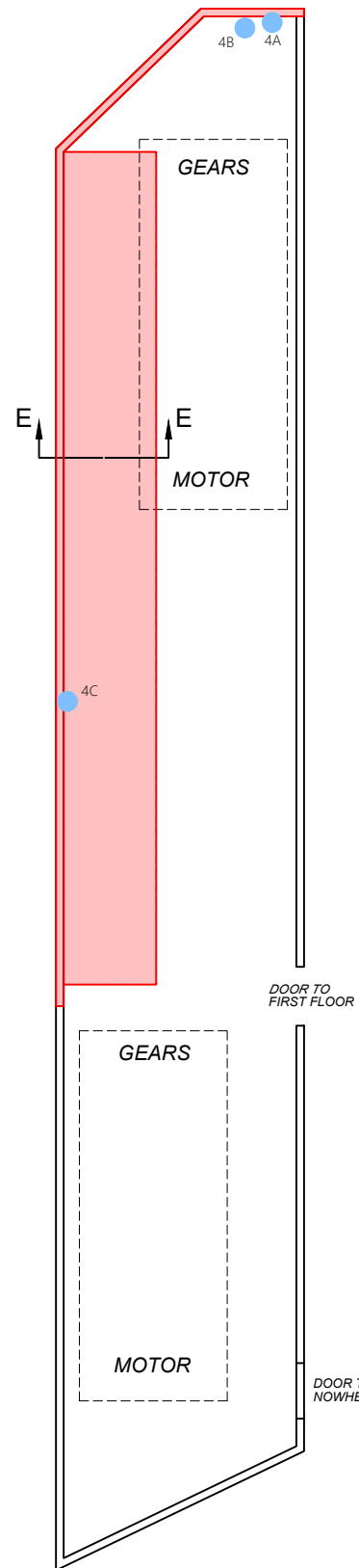
TENDER HOUSE FLOOR PLANS & ASBESTOS CONTAINING MATERIAL LOCATIONS

IMAGES: PROJECTNAME: ---
 A3E Logo 2022_v4_Green Arrow color_Black Letters.png
 AERIAL.jpg
 EAST GOOGLE.jpg



DETAIL A - MACHINERY SPACE

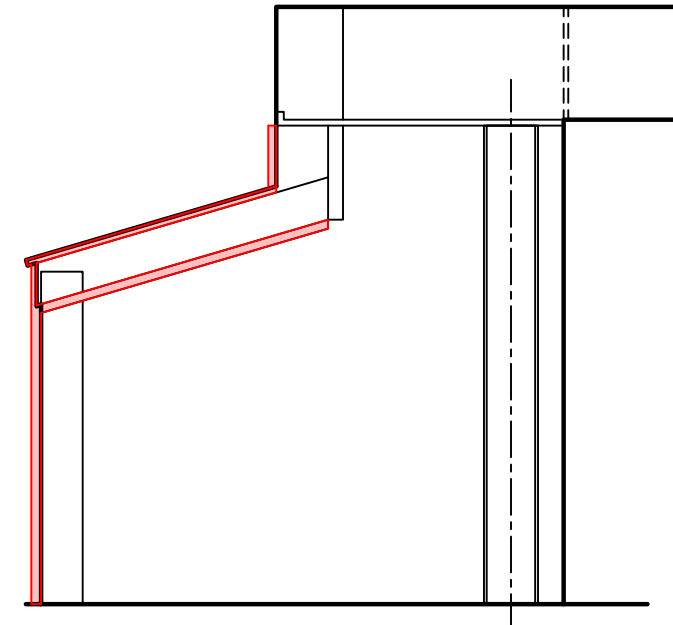
GENERAL PLAN OF MACHINERY & ENCLOSURES
 West side shown, East side symmetrical
 by rotation



DETAIL B - MACHINERY SPACE 2nd FLOOR

LEGEND

- ASBESTOS SAMPLE
- HA-4: ACM TRANSITE PANELING



SECTION E-E
 Scale: 1 in. = 4 ft.



NOTE

BASE MAP DEVELOPED FROM GOOGLE EARTH AERIAL IMAGERY, ONSITE INVESTIGATION & PLANS FOR PROPOSED FEDERAL AID HIGHWAY (DATED 11/16/1955)

30182838 - IDOT / Asbestos Surveys WO #21
 PARCEL 0ZZ9999
 NEQ & SWQ of Ohio Street Feeder @ Chicago River
 CHICAGO, COOK COUNTY, ILLINOIS
ASBESTOS ABATEMENT SURVEY

**TENDER HOUSE DETAIL
 ASBESTOS CONTAINING MATERIAL
 LOCATIONS**



FIGURE

8

Appendix A

Limitations and Service Constraints

Limitations and Service Constraints

The opinions, conclusions and recommendations presented in this report are limited to the information obtained during the performance of the specific scope of service identified in the report. To the extent that Arcadis relied upon any information prepared by other parties not under direct contract to Arcadis, no representation as to the accuracy or completeness of such information is made. This report is an instrument of professional service and the services described in the report were performed in accordance with generally accepted standards and level of skill and care ordinarily exercised by members of the profession working under similar conditions including comparable budgetary and schedule constraints. No warranty, guarantee or certification express or implied, is intended or given with respect to Arcadis' services, opinions, conclusions, or recommendations. This statement is in lieu of any other statement either expressed or implied.

Arcadis' observations, the results of testing and Arcadis' opinions, conclusions and recommendations apply solely to conditions existing at the specific times when and specific locations where Arcadis' investigative work was performed. Arcadis affirms that data gathered and presented by Arcadis in this report was collected in an appropriate manner in accordance with generally accepted methods and practices. Arcadis cannot be responsible for decisions made by our client solely on the basis of economic factors. Observation and testing activities such as those conducted by Arcadis are inherently limited and do not represent a conclusive or complete characterization. Arcadis analyzed only the substances, conditions and locations described in the report at the time indicated. Conditions in other parts of the project site, building or area may vary from conditions at the specific locations where observations were made and where testing was performed by Arcadis. Additionally, other building material hazards which were not identified by Arcadis, may also be present in inaccessible areas, including within walls and cavities, above ceilings, and below floors. Therefore, the extent of Arcadis' opinions, conclusions and recommendations are limited and 100% confidence in these opinions, conclusions and recommendations cannot reasonably be achieved. Nothing contained in this report shall relieve any other party of its responsibility to abide by contract documents and applicable laws, codes, regulations, or standards nor shall it be considered medical advice or consultation.

This report is expressly for the sole and exclusive use of the party for whom this report was originally prepared and for the particular purpose outlined in the report. Only the party for whom this report was originally prepared and/or other specifically named parties have the right to make use of and rely upon this report. Reuse of this report or any portion thereof for other than its intended purpose, or if modified, or if used by third parties, shall be at the user's sole risk. This report must be presented in its entirety.

Appendix B

Accreditations

Inspector

Laboratory



ASBESTOS PROFESSIONAL LICENSE

ID NUMBER

100 - 20504

ISSUED

8/1/2023

EXPIRES

05/15/2024

ANTHONY F SPALLA
4622 N RACINE AVE., APT 17
CHICAGO, IL 60640

Environmental Health



ENDORSEMENTS

TC EXPIRES

INSPECTOR

7/14/2024

PROJECT MANAGER

7/15/2024

AIR SAMPLING PROFESSIONAL

Alteration of this license shall result in legal action
This license issued under authority of the State of Illinois
Department of Public Health

This license is valid only when accompanied by a valid
training course certificate.



OCCUPATIONAL TRAINING & SUPPLY, INC.

Asbestos Building Inspector Refresher

Occupational Training & Supply, Inc. certifies that

Anthony Spalla

has successfully completed the Asbestos Building Inspector Refresher course and has passed the competency exam with a minimum score of 70%. The course is accredited by the Illinois Department of Public Health and Indiana Department of Environmental Management for purposes of accreditation in accordance with EPA 40 CFR 763, Asbestos Hazard Emergency response Act (AHERA) and TSCA Title II.

Course Date: 7/15/2022

Exam Date: 7/15/2022

Expiration Date: 7/15/2023

Certificate Number: BIR2207151721

Kathy DeSalvo, Director



525-535 West Jefferson Street • Springfield, Illinois 62761-0001 • www.dph.illinois.gov

PATRICK W HOOK
2025 WOODLANE DR
LINDENHURST, IL 60046

4/14/2023

ASBESTOS PROFESSIONAL LICENSE ID NUMBER: 10967

Enclosed is your Asbestos Professional License. Please note the expiration date on the card and in the image depicted below.

COPY OF THE ASBESTOS PROFESSIONAL LICENSE

Front of License

Back of License

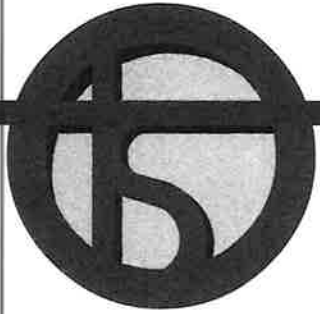
			ASBESTOS PROFESSIONAL LICENSE		ENDORSEMENTS	TC EXPIRES
ID NUMBER	ISSUED	EXPIRES			INSPECTOR	1/13/2024
100 - 10967	4/14/2023	05/15/2024			PROJECT MANAGER	1/14/2024
PATRICK W HOOK 2025 WOODLANE DR LINDENHURST, IL 60046 Environmental Health			Alteration of this license shall result in legal action This license issued under authority of the State of Illinois Department of Public Health This license is valid only when accompanied by a valid training course certificate.			

If you have any questions or need further assistance, contact the Asbestos Program at (217)782-3517 or fax (217)785-5897.

Our WEB address is: dph.illinois.gov/topics-services/environmental-health-protection/asbestos
EMAIL Address: dph.asbestos@illinois.gov

PROTECTING HEALTH, IMPROVING LIVES

Nationally Accredited by PHAB



OCCUPATIONAL TRAINING & SUPPLY, INC.

Asbestos Building Inspector Refresher

Occupational Training & Supply, Inc. certifies that
Patrick Wayne Hook

has successfully completed the Asbestos Building Inspector Refresher course and has passed the competency exam with a minimum score of 70%. The course is accredited by the Illinois Department of Public Health and Indiana Department of Environmental Management for purposes of accreditation in accordance with EPA 40 CFR 763, Asbestos Hazard Emergency response Act (AHERA) and TSCA Title II.

Course Date: 1/13/2023

Exam Date: 1/13/2023

Expiration Date: 1/13/2024

Certificate Number: BIR2301130074

Kathy DeSalvo, Director

United States Department of Commerce
National Institute of Standards and Technology



Certificate of Accreditation to ISO/IEC 17025:2017

NVLAP LAB CODE: 101202-0

STAT Analysis Corporation
Chicago, IL

*is accredited by the National Voluntary Laboratory Accreditation Program for specific services,
listed on the Scope of Accreditation, for:*

Asbestos Fiber Analysis

*This laboratory is accredited in accordance with the recognized International Standard ISO/IEC 17025:2017.
This accreditation demonstrates technical competence for a defined scope and the operation of a laboratory quality
management system (refer to joint ISO-ILAC-IAF Communique dated January 2009).*

2022-07-01 through 2023-06-30

Effective Dates



[Signature]
For the National Voluntary Laboratory Accreditation Program

SCOPE OF ACCREDITATION TO ISO/IEC 17025:2017

STAT Analysis Corporation

STAT Analysis Corporation
2242 W. Harrison Suite 200
Chicago, IL 60612
Mr. Sean Hayes
Phone: 312-733-0551
Email: shayes@statanalysis.com
<http://www.STATAnalysis.com>

ASBESTOS FIBER ANALYSIS

NVLAP LAB CODE 101202-0

Bulk Asbestos Analysis

Code

Description

18/A01

EPA -- 40 CFR Appendix E to Subpart E of Part 763, Interim Method of the Determination of Asbestos in Bulk Insulation Samples

18/A03

EPA 600/R-93/116: Method for the Determination of Asbestos in Bulk Building Materials

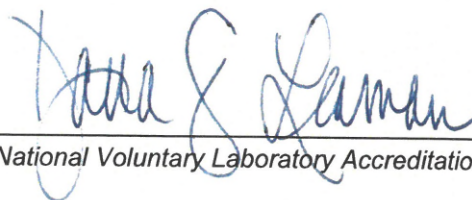
Airborne Asbestos Analysis

Code

Description

18/A02

U.S. EPA's "Interim Transmission Electron Microscopy Analytical Methods-Mandatory and Nonmandatory-and Mandatory Section to Determine Completion of Response Actions" as found in 40 CFR, Part 763, Subpart E, Appendix A.



For the National Voluntary Laboratory Accreditation Program

Appendix C

Laboratory Reports

ASBESTOS ANALYSIS BY POLARIZED LIGHT MICROSCOPY

Method: EPA/600/R-93/116

Arcadis US Inc.
 2800 W. Higgins Road, Suite 1000
 Hoffman Estates, IL 60169
 Phone: (847) 805-1000
 Fax: (847) 252-2323

Reference:	30182838	Date Received:	06/05/2023
Location:	IDOT WO#21, 560 W. Grand, Chicago, IL	Date Analyzed:	06/12/2023
Batch No.:	365368	Date Reported:	06/12/2023
Customer No.:	2530	Turn Around Time:	5 Days

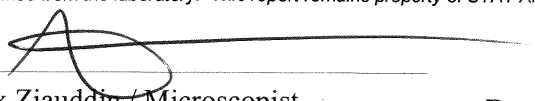
Laboratory Sample	Customer Sample Number	Asbestos Components (%)	Non-Asbestos Components (%)
365368001	1A	ND	Binder 99-100%
365368002	1B	ND	Binder 99-100%
365368003	1C	ND	Binder 99-100%
365368004	2A	ND	Binder 99-100%
365368005	2B	ND	Binder 99-100%
365368006	2C	ND	Binder 99-100%
365368007	3A	ND	Binder 99-100%
365368008	3B	ND	Binder 99-100%
365368009	3C	ND	Binder 99-100%
365368010	4A	Chrysotile 10-15%	Binder 85-90%
365368011	4B	Chrysotile 10-15%	Binder 85-90%
365368012	4C	Chrysotile 10-15%	Binder 85-90%
365368013	5A	ND	Binder 99-100%
365368014	5B	ND	Binder 99-100%
365368015	5C	ND	Binder 99-100%
365368016	6A	ND	Binder 99-100%
365368017	6B	ND	Binder 99-100%
365368018	6C	ND	Binder 99-100%

ND = Asbestos Not Detected (Not Present) NA = Not Analyzed NS = Not Submitted

Components of inhomogeneous samples are analyzed per our Standard Operating Procedure, or per customer request.

The use of the NVLAP logo does not imply endorsement by NVLAP or any agency of the US Government.

The information contained in this report and any attachments is confidential information intended only for the use of the individual or entities named above. The results of this report relate only to the samples tested. If you have received this report in error, please notify us immediately by phone. This report shall not be reproduced, except in its entirety, unless written approval has been obtained from the laboratory. This report remains property of STAT Analysis until payment is received in full (see invoice).

Analyzed by Name : 

ASBESTOS ANALYSIS BY POLARIZED LIGHT MICROSCOPY

Method: EPA/600/R-93/116

Arcadis US Inc.
 2800 W. Higgins Road, Suite 1000
 Hoffman Estates, IL 60169
 Phone: (847) 805-1000
 Fax: (847) 252-2323

Reference:	30182838	Date Received:	06/05/2023
Location:	IDOT WO#21, 560 W. Grand, Chicago, IL	Date Analyzed:	06/12/2023
Batch No.:	365368	Date Reported:	06/12/2023
Customer No.:	2530	Turn Around Time:	5 Days

Laboratory Sample	Customer Sample Number	Asbestos Components (%)	Non-Asbestos Components (%)
365368019	7A	ND	Binder 99-100%
365368020	7B	ND	Binder 99-100%
365368021	7C	ND	Binder 99-100%
365368022	8A	ND	Cellulose 5-10% Binder 90-95%
365368023	8B	ND	Cellulose 5-10% Binder 90-95%
365368024	8C	ND	Cellulose 5-10% Binder 90-95%
365368025	9A	ND	Binder 99-100%
365368026	9B	ND	Binder 99-100%
365368027	9C	ND	Binder 99-100%
365368028	10A	Chrysotile 10-15%	Binder 85-90%
365368029	10B	Chrysotile 10-15%	Binder 85-90%
365368030	10C	Chrysotile 10-15%	Binder 85-90%
365368031	11A	ND	Binder 80-85% Glass 15-20%
365368032	11B	ND	Binder 80-85% Glass 15-20%

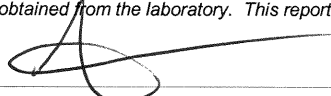
ND = Asbestos Not Detected (Not Present) NA = Not Analyzed NS = Not Submitted

Components of inhomogeneous samples are analyzed per our Standard Operating Procedure, or per customer request.

The use of the NVLAP logo does not imply endorsement by NVLAP or any agency of the US Government.

The information contained in this report and any attachments is confidential information intended only for the use of the individual or entities named above. The results of this report relate only to the samples tested. If you have received this report in error, please notify us immediately by phone. This report shall not be reproduced, except in its entirety, unless written approval has been obtained from the laboratory. This report remains property of STAT Analysis until payment is received in full (see invoice).

Analyzed by Name :



Alex Ziauddin / Microscopist

ASBESTOS ANALYSIS BY POLARIZED LIGHT MICROSCOPY

Method: EPA/600/R-93/116

Arcadis US Inc.
 2800 W. Higgins Road, Suite 1000
 Hoffman Estates, IL 60169
 Phone: (847) 805-1000
 Fax: (847) 252-2323

Reference:	30182838	Date Received:	06/05/2023
Location:	IDOT WO#21, 560 W. Grand, Chicago, IL	Date Analyzed:	06/12/2023
Batch No.:	365368	Date Reported:	06/12/2023
Customer No.:	2530	Turn Around Time:	5 Days

Laboratory Sample	Customer Sample Number	Asbestos Components (%)	Non-Asbestos Components (%)
365368033	11C	ND	Binder 80-85% Glass 15-20%

ND = Asbestos Not Detected (Not Present) NA = Not Analyzed NS = Not Submitted

Components of inhomogeneous samples are analyzed per our Standard Operating Procedure, or per customer request.

The use of the NVLAP logo does not imply endorsement by NVLAP or any agency of the US Government.

The information contained in this report and any attachments is confidential information intended only for the use of the individual or entities named above. The results of this report relate only to the samples tested. If you have received this report in error, please notify us immediately by phone. This report shall not be reproduced, except in its entirety, unless written approval has been obtained from the laboratory. This report remains property of STAT Analysis until payment is received in full (see invoice).

Analyzed by Name : 

ARCADIS

365368

Client: *CDOT*
 Site Address: *560 W. Grand*
 Project Number: *2008038*
 Inspector: *M AS/PH*

HA / Sample Number	Material Type	Color	Texture	Description	Floor	Sample Location	Condition	Friable Y / N	Approx Quantity Units	
1	A B C	M	Red	R	Red Brick	E	A) West side of Bldg B) West Wall lot 100 C) West wall Bldg	G	N	3,600sf
Comment / Notes:										
2	A B C	M	Gray	R	Mortar assoc. with HA-1	E	" ↓ "	G	N	3,600sf
Comment / Notes:										
3	A B C	M	Gray	R	Concrete walls and foundation	1st / Exterior	A) West stairwell B) West Exterior wall C) South exterior wall	G	N	4,680sf
Comment / Notes: <i>Throughout</i>										
4	A B C	M	White	R	Transite Panels	1st / 12th	A) North wall B) East wall C) East wall	D	N	
Comment / Notes: <i>Throughout the Gear Room</i>										
5	A B C	M	Gray	S	12X12 Floortile	3rd / 34th	A) West wall corner B) West side of stairs C) East side of stairs	G	N	168sf 338
Comment / Notes: <i>Not the stairs but by the stairs samples B and C.</i>										
6	A B C	M	Yellow	R	Mastic assoc. with HA-5	3rd / 34th	A) North side B) West side C) South side	G	N	168sf 338
Comment / Notes:										
7	A B C	M	White	S	Window Frame caulk	3rd / 34th	" "	G	N	104LF
Comment / Notes:										
8	A B C	M	White	R	Drywall ceiling panels	3rd / 34th	" "	G	N	338sf.
Comment / Notes:										
9	A B C	M	Yellow	S	Covebase Mastic	3rd / 34th	" ↓ "	G	N	104LF.
Comment / Notes:										
10	A B C	TSE	White	R	Aircell	3rd / 34th	A) 3rd Bath B) 2nd Electrical C) 1st Stairwell	G	Y/A	
Comment / Notes: <i>South west corner pipes all connected</i>										
11	A B C	TSE	White	R	Hard pack fitting	3rd	A) 3rd Bath B) 2nd Electrical C) 1st Stairwell	G	Y	
Comment / Notes: <i>South west corner pipe, all connected (Entry door to electrical room from stairwell)</i>										
12	— — —	M	Dark red	S	Fire Doors	3rd	3rd floor door	G	N	3ea. side
Comment / Notes: <i>Asumed ACM. 6 total</i>										

~~Inaccessible rooms: 1st floor tool equipment room, 2nd floor Storage room~~
 Update: CDOT came and opened all inaccessible.

Appendix D

Photo Log



View of the Southwest Bridge Tender House



**HA-1: Red Exterior Brick
HA-2: Gray Mortar**



HA-3: Gray Concrete Foundation and Walls



HA-4: White Transite Panels



**HA-5: Gray 12 x 12 Floor Tile
HA-6: Yellow Floor Tile Mastic**



HA-7: White Window Frame Caulk



HA-8: White Gypsum Board Ceiling Panels



HA-9: Yellow Cove Base Mastic



HA-10: White Air Cell Pipe Insulation



HA-11: White Hard Park Fitting



HA-12: Dark Red Fire Door



HA-13: Transite Flue/Vent (not visible inside pipe)

Arcadis U.S., Inc.
200 South Michigan Avenue
Suite 2000
Chicago, Illinois 60604
Phone: 312 917 1000
Fax: 312 583 1914
www.arcadis.com