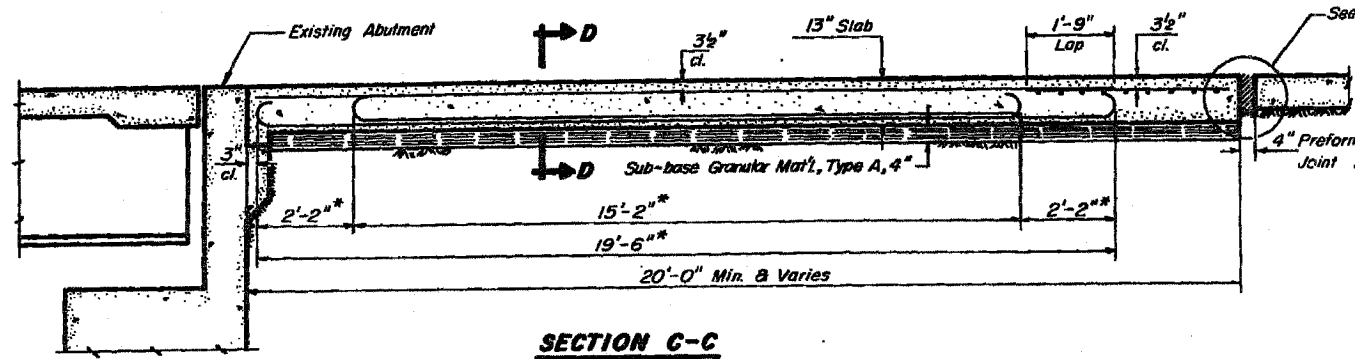
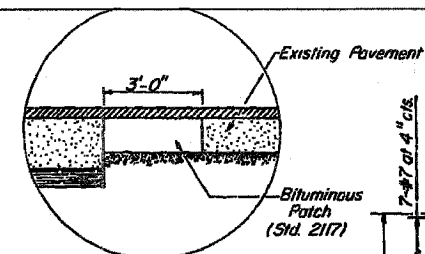


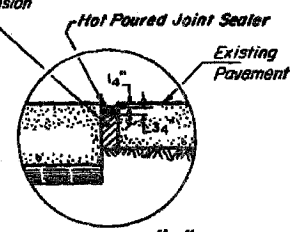
F.A. RTE.	SECTION	COUNTY	TOTAL SHEETS	SHEET NO.
			9	8
STA.		TO STA.		
FED. ROAD DIST. NO.		ILLINOIS FED. AID PROJECT		



SECTION C-C
*Stagger alternate #7 bars as shown on plan - f.u. width.

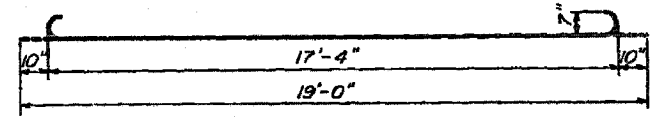


DETAIL "A"
(When bituminous surface is being placed)

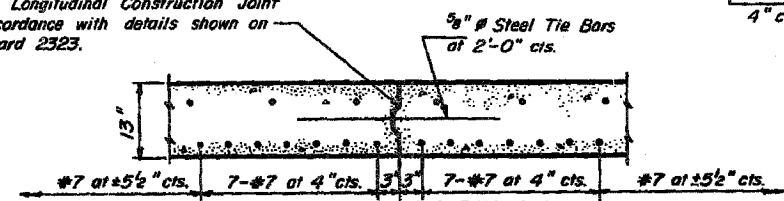


DETAIL "A"
(P.C.C. Pavement Construction)

Keyed Longitudinal Construction Joint in accordance with details shown on Standard 2323.



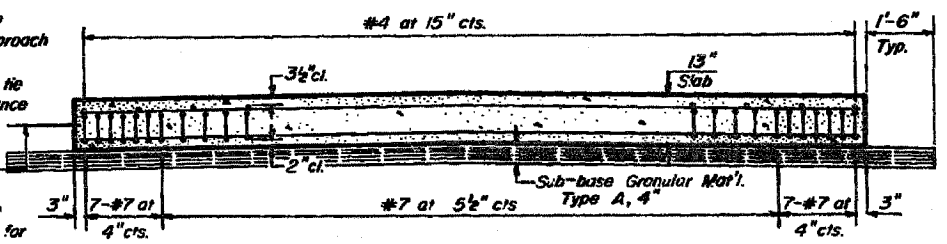
#7 BARS



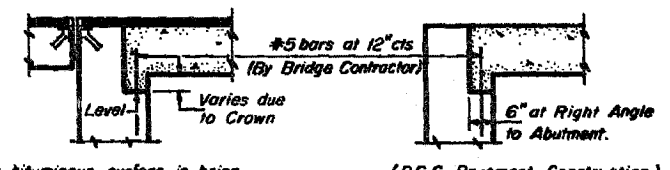
OPTIONAL LONGITUDINAL CONSTRUCTION JOINT

As approved by the Engineer, the Contractor may elect to reduce the widths of pour by use of the Optional Longitudinal Construction Joint shown. Joints shall be located at the edge of a traffic lane.

When the road plans show curb and gutter, gutter, or bridge approach shoulder pavement adjacent to approach slabs, place 1/2" diameter steel tie bars at 2'-6" centers in accordance with the detail for Bulkhead Longitudinal Construction Joint shown on Standard 2323. Cost of the tie bars will be included in the contract unit price for the adjacent item. Transitions for curb and gutter or gutter shall be as shown on the plans.



SECTION D-D



SECTION E-E

Notes:
For skews of less than 10° omit wire fabric. For skews of 10° or more use Welded Wire Fabric, 6"x6"-W5.5 x W5.5, placed 3/2" below top of slab. Expanded Metal weighing not less than 78 Pounds per 100 Sq. Ft. or a welded bar mat weighing not less than 78 Pounds per 100 Sq. Ft. having members of equal size in both directions and spaced not over 8" apart may be used instead of the Welded Wire Fabric, 6"x6"-W5.5 x W5.5, provided the expanded metal or bar mat is furnished at no additional cost to the State. Reinforcement bars shall conform to the requirements of A.A.S.H.T.O. M 31 or M 53, Grade 60.

DESIGN STRESSES

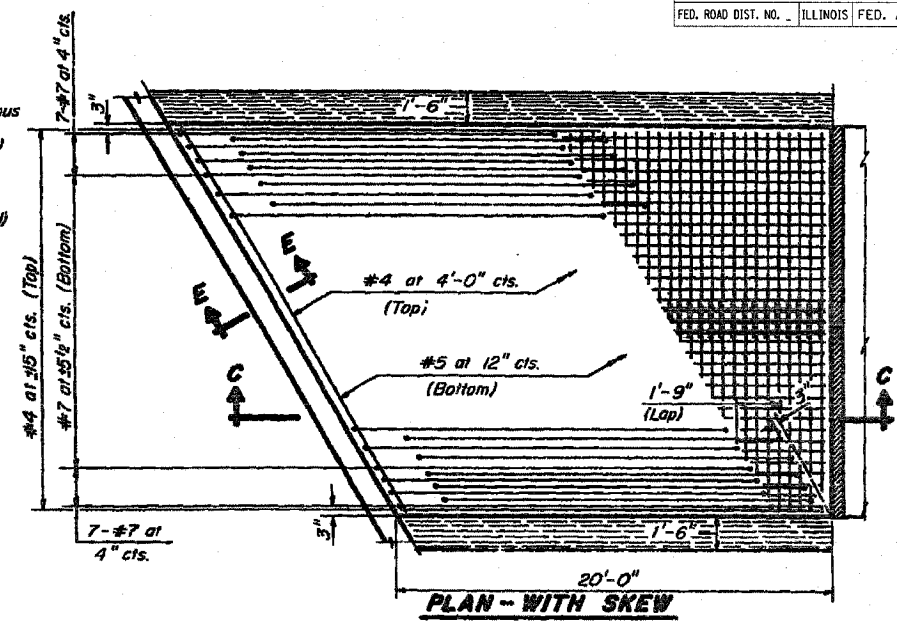
$f_y = 60,000$ p.s.i.
 $f'_c = 3500$ psi
 $n = 8.5$

GENERAL NOTES

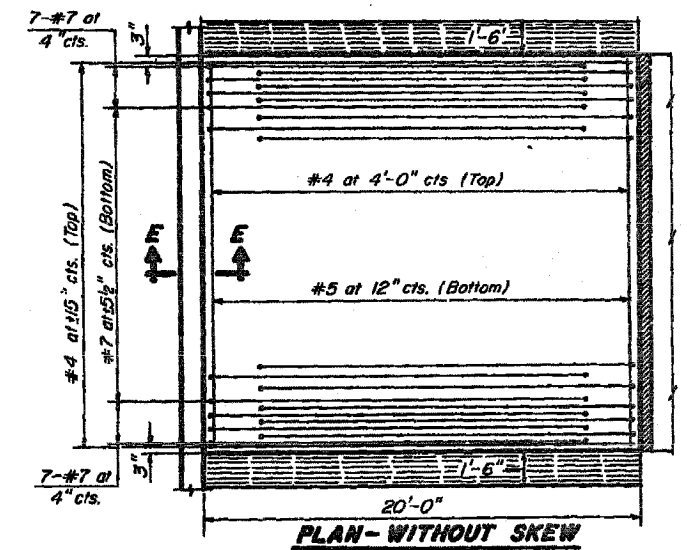
The cost of tie bars, expansion joint filler, sub-base, welded wire fabric and bituminous prime when required shall be considered as included in the unit cost of the Bridge Approach Pavement.

Preformed Expansion Joint Filler shall conform to Art. 715.10 of the Standard Specifications. Width of Bridge Approach Slab shall be determined before the reinforcement bars are fabricated.

The bituminous patch, when required, will be paid for in accordance with Section 620 of the Standard Specifications.



PLAN - WITH SKEW



PLAN - WITHOUT SKEW

BRIDGE APPROACH PAVEMENT

Sheet 1 of 2
STANDARD 2362-2

FOR INFORMATION ONLY

Illinois Department of Transportation

APPROVED *[Signature]* M.S.F. 10 1986
Engineer of Bridges and Structures

APPROVED *[Signature]* M.S.F. 10 1986
Engineer of Design

ISSUED 3-6-86

PLOT DATE = Wed Jan 31 11:43:36 2007
 FILE NAME = G:\Info\CPDD plans\Various Counties\2006\pavement\oasimg.dgn
 USER = jbrackj
 PLOTTER = HPGL