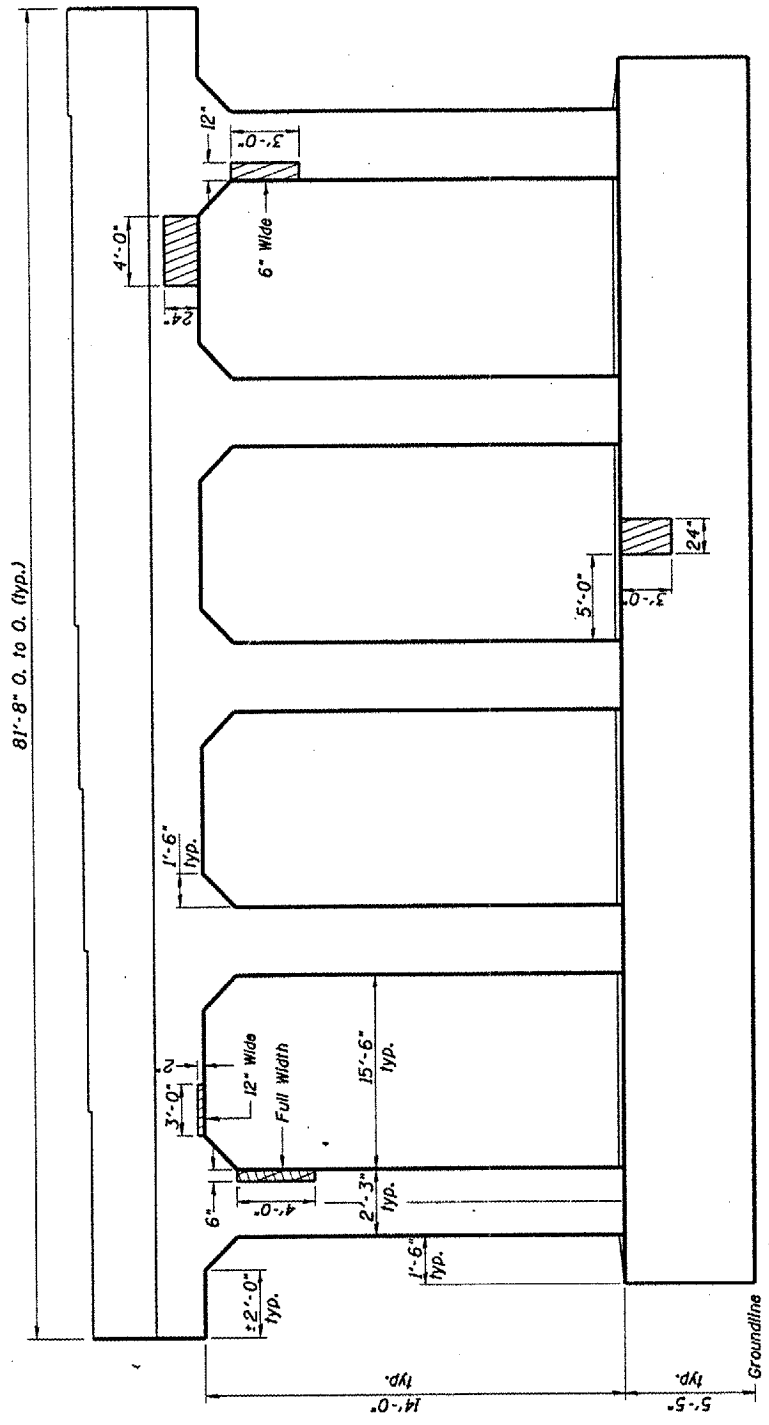


F.A.P. DIST.	SECTION	COUNTY	TOTAL SHEETS	SHEET NO.
64	*	PEORIA	20	16
STA. 211+60.95		TO STA. 219+27.65		
FED. ROAD DIST. NO. 4 ILLINOIS FED. AID PROJECT				
* 04 Bridge Repair 2007-2				



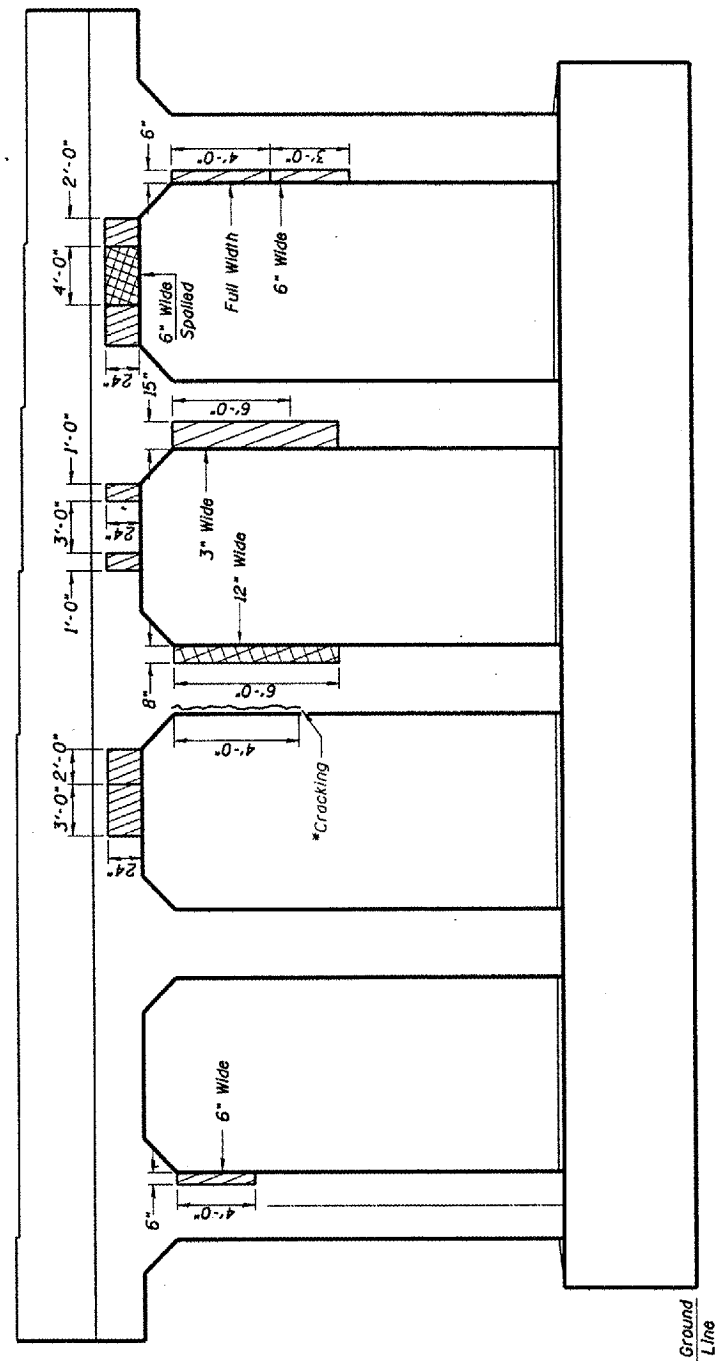
ELEVATION PIER 10
(Looking West)

ESTIMATED QUANTITIES

ITEM	UNIT	QUANTITY
Structural Repair of Concrete (DS)	SQ.FT.	4.4
Structural Repair of Concrete (CS)	SQ.FT.	24.6

Structural Repair of Concrete < 5"
Structural Repair of Concrete > 5"

NOTE
Railroad Tracks between Piers 9 and 10 will require Railroad Engineer presence during all work performed at this location.



ELEVATION PIER 10
(Looking East)

ESTIMATED QUANTITIES

ITEM	UNIT	QUANTITY
Structural Repair of Concrete (DS)	SQ.FT.	11
Structural Repair of Concrete (CS)	SQ.FT.	62.5

Structural Repair of Concrete < 5"
Structural Repair of Concrete > 5"

***NOTE**
Cracked area needs loose material hammered away and repaired according to "Structural Repair of Concrete".

SN.072-0012 Adams St. over Clark St. & B.N.R.R.

ILLINOIS DEPARTMENT OF TRANSPORTATION

STRUCTURAL REPAIR DETAILS

VERT. SCALE: HORIZ. DATE 06-16-2005

DRAWN BY CEJ
CHECKED BY

REVISIONS	
NAME	DATE

PLOT DATE
PLOT SCALE
PLOT SCALE
REFERENCE