

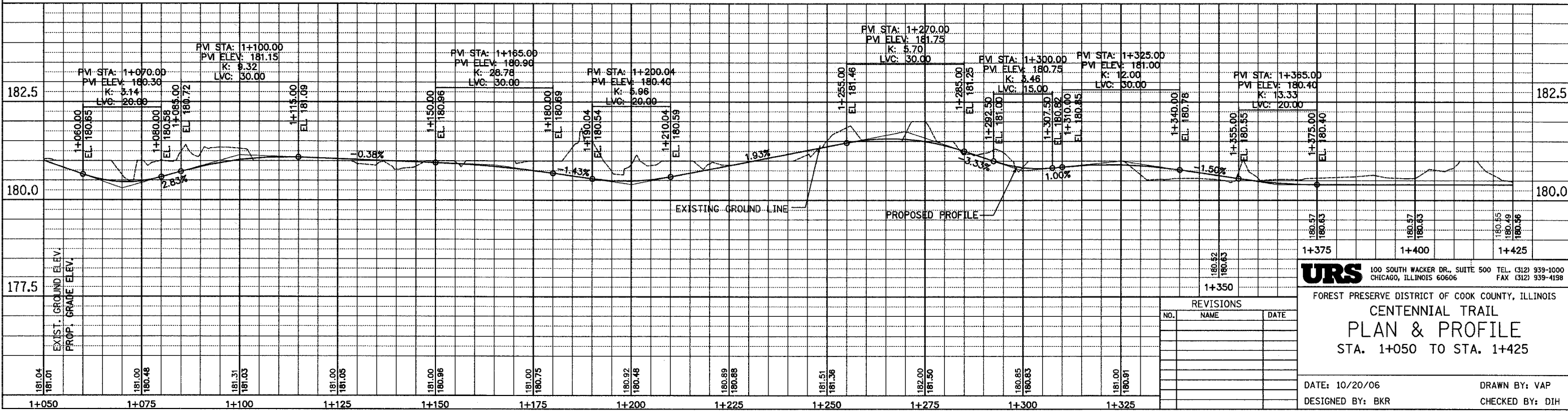
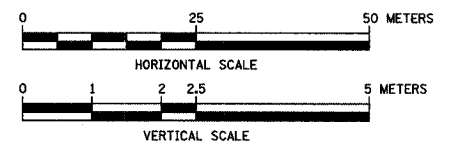
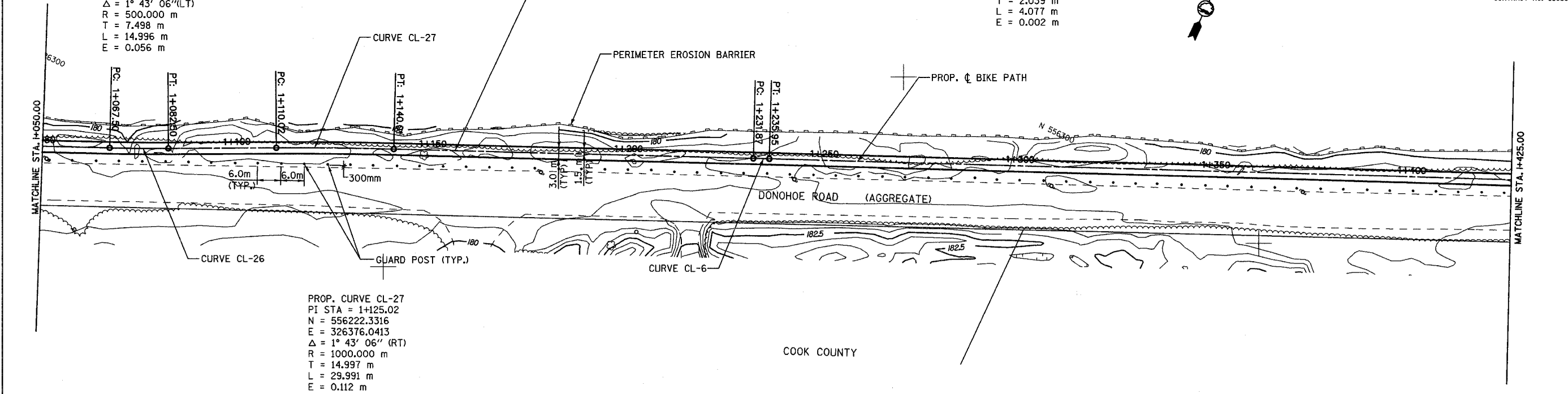
SECTION	COUNTY	TOTAL SHEETS	SHEET NO.
94-F3000-05-BT	COOK	102	14
STA. TO STA.			
IDOT PROJECT NO. TE-0001(610)			
CENTENNIAL TRAIL			
CONTRACT NO. 83859			

PROP. CURVE CL-26
 PI STA = 1+075.00
 N = 556200.9200
 E = 326330.8329
 $\Delta = 1^\circ 43' 06''$ (LT)
 R = 500.000 m
 T = 7.498 m
 L = 14.996 m
 E = 0.056 m

PROP. CURVE CL-6
 PI STA = 1+233.91
 N = 556265.9694
 E = 326475.8067
 $\Delta = 0^\circ 14' 01''$ (LT)
 R = 1000.000 m
 T = 2.039 m
 L = 4.077 m
 E = 0.002 m

PROP. CURVE CL-27
 PI STA = 1+125.02
 N = 556222.3316
 E = 326376.0413
 $\Delta = 1^\circ 43' 06''$ (RT)
 R = 1000.000 m
 T = 14.997 m
 L = 29.991 m
 E = 0.112 m

PROPOSED BICYCLE TRAIL
 AGGREGATE BASE COURSE, TYPE B, 150 mm
 HOT-MIX ASPHALT SURFACE COURSE, MIX C, N50, 50mm
 PAINT PAVT. MKG. LINE 100 mm (SOLID YELLOW ALONG ϕ)



URS 100 SOUTH WACKER DR., SUITE 500 TEL: (312) 939-1000
 CHICAGO, ILLINOIS 60606 FAX: (312) 939-4198

FOREST PRESERVE DISTRICT OF COOK COUNTY, ILLINOIS
CENTENNIAL TRAIL
PLAN & PROFILE
 STA. 1+050 TO STA. 1+425

DATE: 10/20/06 DRAWN BY: VAP
 DESIGNED BY: BKR CHECKED BY: DIH

REVISIONS		
NO.	NAME	DATE