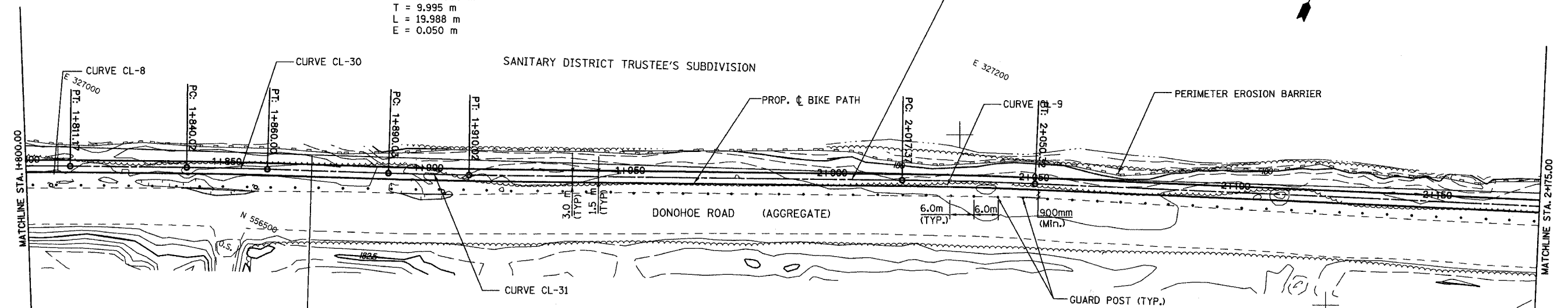


SECTION	COUNTY	TOTAL SHEETS	SHEET NO.
94-F3000-05-BT	COOK	102	16
STA. TO STA.			
IDOT PROJECT NO. TE-D001(610)			
CENTENNIAL TRAIL			
CONTRACT NO. 83859			

PROP. CURVE CL-31  
 PI STA = 1+900.02  
 N = 556535.2918  
 E = 327084.9539  
 $\Delta = 1^\circ 08' 43''$  (LT)  
 R = 1000.000 m  
 T = 9.995 m  
 L = 19.988 m  
 E = 0.050 m

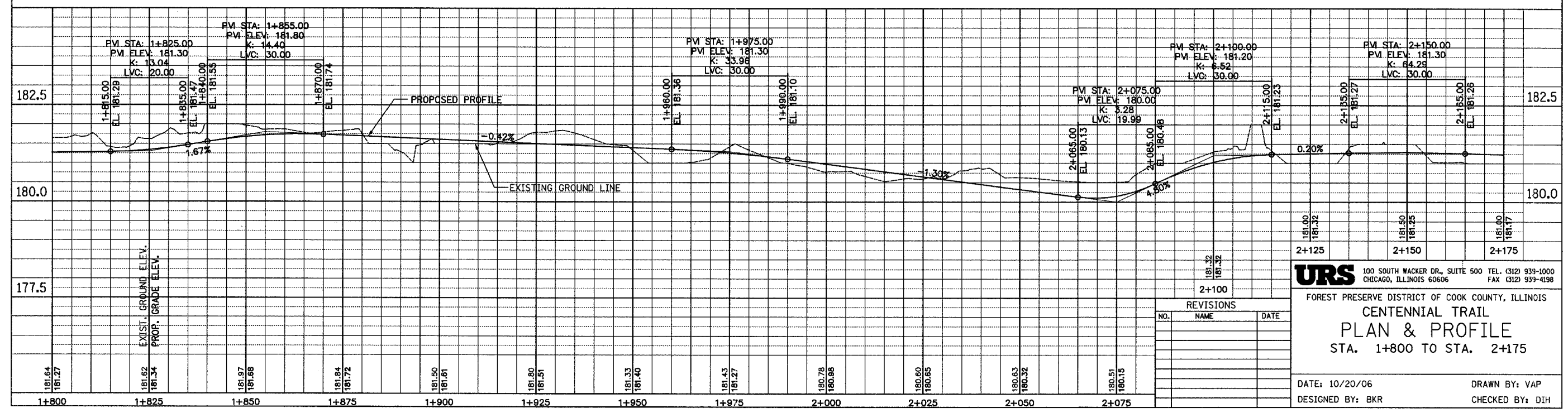
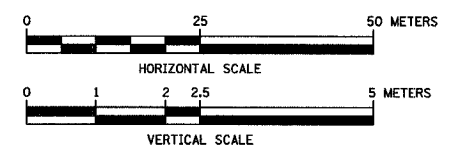
PROPOSED BICYCLE TRAIL  
 AGGREGATE BASE COURSE, TYPE B, 150 mm  
 HOT-MIX ASPHALT SURFACE COURSE, MIX C, N50, 50mm  
 PAINT PAVT. MKG. LINE 100 mm (SOLID YELLOW ALONG  $\phi$ )



PROP. CURVE CL-8  
 PI STA = 1+799.65  
 N = 556494.7654  
 E = 326993.1298  
 $\Delta = 2^\circ 38' 24''$  (RT)  
 R = 500.000 m  
 T = 11.521 m  
 L = 23.037 m  
 E = 0.133 m

PROP. CURVE CL-30  
 PI STA = 1+850.01  
 N = 556515.5590  
 E = 327039.0021  
 $\Delta = 1^\circ 08' 41''$  (RT)  
 R = 1000.000 m  
 T = 9.990 m  
 L = 19.979 m  
 E = 0.050 m

PROP. CURVE CL-9  
 PI STA = 2+033.85  
 N = 556590.5439  
 E = 327206.8410  
 $\Delta = 1^\circ 53' 15''$  (RT)  
 R = 1000.000 m  
 T = 16.473 m  
 L = 32.942 m  
 E = 0.136 m



REVISIONS		
NO.	NAME	DATE

**URS** 100 SOUTH WACKER DR., SUITE 500 TEL. (312) 939-1000  
 CHICAGO, ILLINOIS 60606 FAX (312) 939-4198

FOREST PRESERVE DISTRICT OF COOK COUNTY, ILLINOIS  
**CENTENNIAL TRAIL**  
**PLAN & PROFILE**  
 STA. 1+800 TO STA. 2+175

DATE: 10/20/06 DRAWN BY: VAP  
 DESIGNED BY: BKR CHECKED BY: DIH