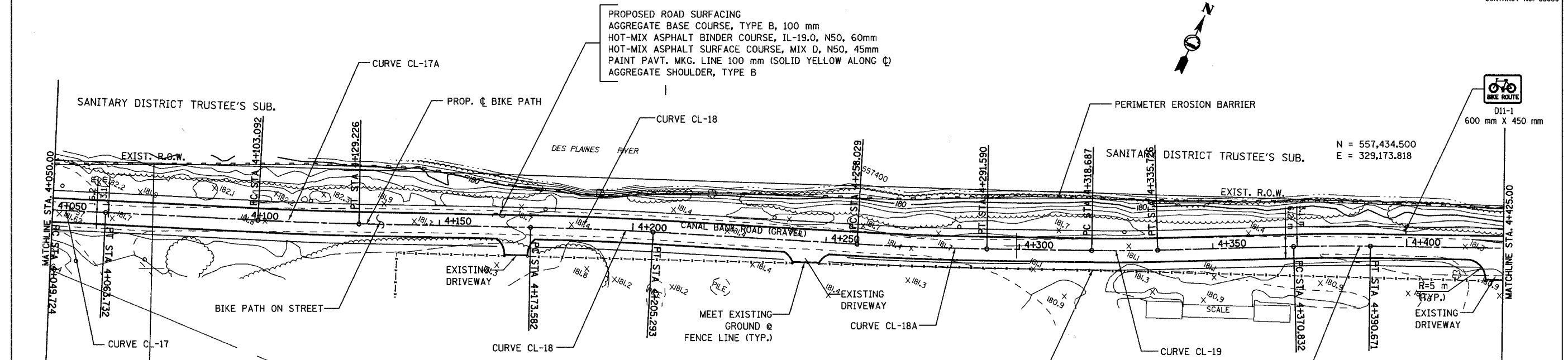


SECTION	COUNTY	TOTAL SHEETS	SHEET NO.
94-F3000-05-BT	COOK	102	22
STA. TO STA.			
IDOT PROJECT NO. TE-0001(610)			
CENTENNIAL TRAIL			

CONTRACT NO. 83859



PROPOSED ROAD SURFACING
 AGGREGATE BASE COURSE, TYPE B, 100 mm
 HOT-MIX ASPHALT BINDER COURSE, IL-19.0, N50, 60mm
 HOT-MIX ASPHALT SURFACE COURSE, MIX D, N50, 45mm
 PAINT PAVT. MKG. LINE 100 mm (SOLID YELLOW ALONG C)
 AGGREGATE SHOULDER, TYPE B

N = 557,434.500
 E = 329,173.818



CURVE CL-17
 PI STA = 4+056.728
 $\Delta = 0^\circ 24' 05''$ (RT)
 R = 2,000.000 m
 T = 7.004 m
 L = 14.009 m
 E = 0.012 m

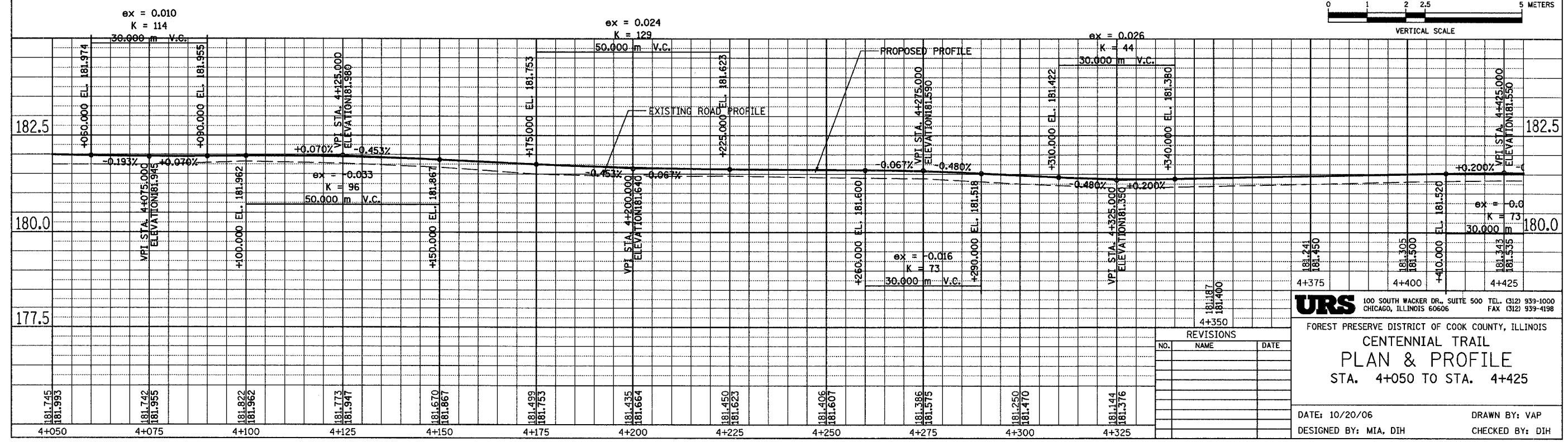
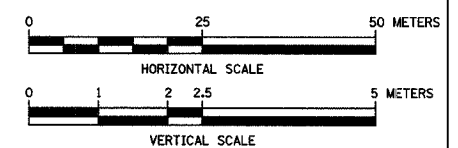
CURVE CL-17A
 PI STA = 4+116.160
 $\Delta = 1^\circ 52' 18''$ (LT)
 R = 800.000 m
 T = 13.068 m
 L = 26.134 m
 E = 0.107 m

CURVE CL-18
 PI STA = 4+189.440
 $\Delta = 2^\circ 16' 16''$ (RT)
 R = 800.000 m
 T = 15.857 m
 L = 31.711 m
 E = 0.157 m

CURVE CL-18A
 PI STA = 4+274.812
 $\Delta = 2^\circ 24' 13''$ (LT)
 R = 800.000 m
 T = 16.783 m
 L = 33.562 m
 E = 0.176 m

CURVE CL-19
 PI STA = 4+327.208
 $\Delta = 2^\circ 26' 27''$ (LT)
 R = 400.000 m
 T = 8.521 m
 L = 17.039 m
 E = 0.091 m

CURVE CL-19A
 PI STA = 4+380.753
 $\Delta = 2^\circ 16' 24''$ (RT)
 R = 500.000 m
 T = 9.921 m
 L = 19.839 m
 E = 0.098 m



REVISIONS		
NO.	NAME	DATE

URS 100 SOUTH WACKER DR., SUITE 500 TEL. (312) 939-1000
 CHICAGO, ILLINOIS 60606 FAX (312) 939-4198

FOREST PRESERVE DISTRICT OF COOK COUNTY, ILLINOIS
CENTENNIAL TRAIL
PLAN & PROFILE
 STA. 4+050 TO STA. 4+425

DATE: 10/20/06 DRAWN BY: VAP
 DESIGNED BY: MIA, DIH CHECKED BY: DIH