

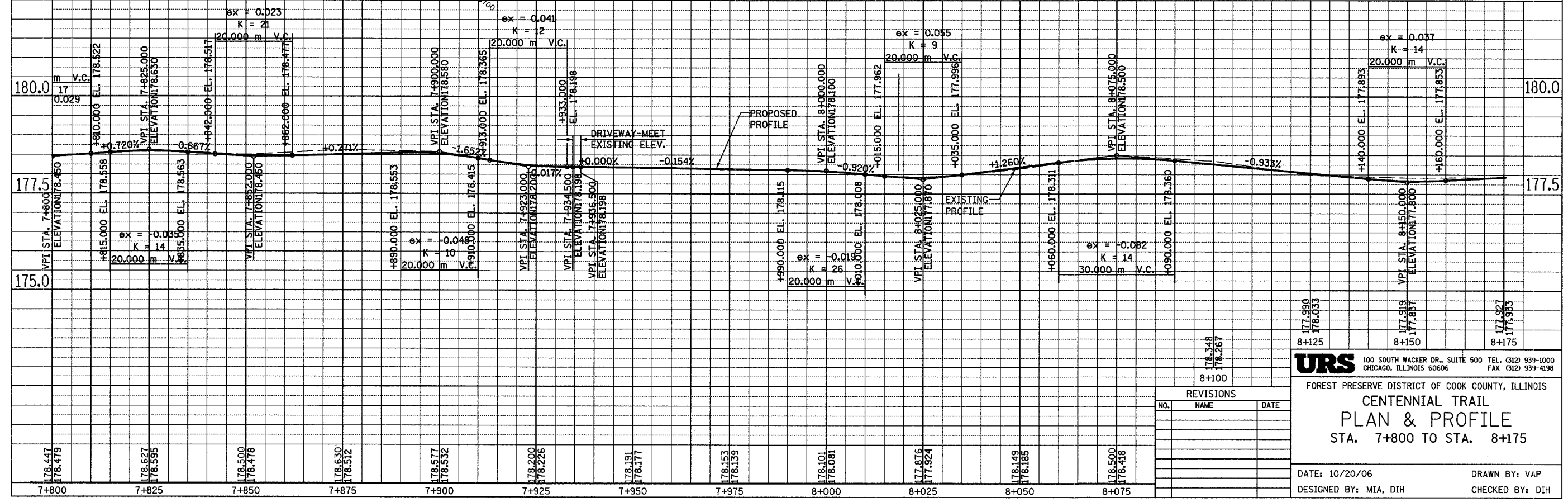
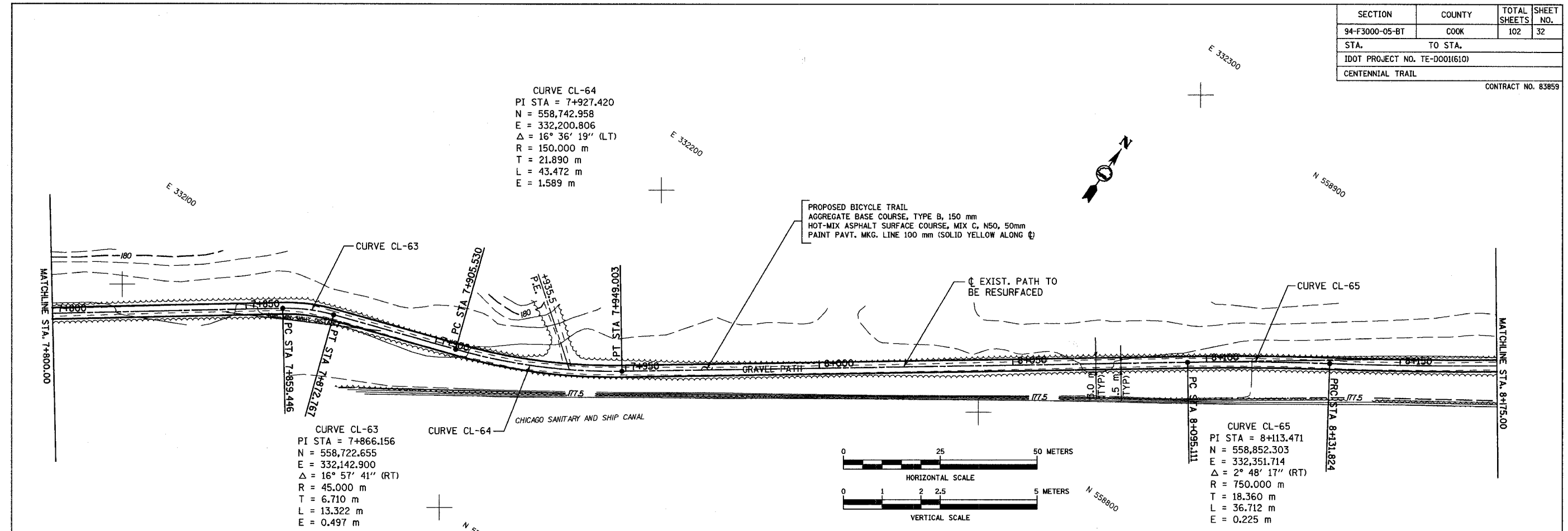
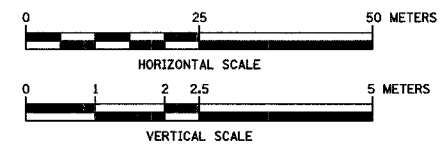
SECTION	COUNTY	TOTAL SHEETS	SHEET NO.
94-F3000-05-BT	COOK	102	32
STA. TO STA.			
IDOT PROJECT NO. TE-D0011610			
CENTENNIAL TRAIL			
CONTRACT NO. 83859			

CURVE CL-64
 PI STA = 7+927.420
 N = 558,742.958
 E = 332,200.806
 $\Delta = 16^\circ 36' 19''$ (LT)
 R = 150.000 m
 T = 21.890 m
 L = 43.472 m
 E = 1.589 m

CURVE CL-63
 PI STA = 7+866.156
 N = 558,722.655
 E = 332,142.900
 $\Delta = 16^\circ 57' 41''$ (RT)
 R = 45.000 m
 T = 6.710 m
 L = 13.322 m
 E = 0.497 m

CURVE CL-65
 PI STA = 8+113.471
 N = 558,852.303
 E = 332,351.714
 $\Delta = 2^\circ 48' 17''$ (RT)
 R = 750.000 m
 T = 18.360 m
 L = 36.712 m
 E = 0.225 m

PROPOSED BICYCLE TRAIL
 AGGREGATE BASE COURSE, TYPE B, 150 mm
 HOT-MIX ASPHALT SURFACE COURSE, MIX C, N50, 50mm
 PAINT PAVT. MKG. LINE 100 mm (SOLID YELLOW ALONG ϕ)



REVISIONS		
NO.	NAME	DATE

URS 100 SOUTH WACKER DR., SUITE 500 TEL. (312) 939-1000
 CHICAGO, ILLINOIS 60606 FAX (312) 939-4198

FOREST PRESERVE DISTRICT OF COOK COUNTY, ILLINOIS
CENTENNIAL TRAIL
PLAN & PROFILE
 STA. 7+800 TO STA. 8+175

DATE: 10/20/06 DRAWN BY: VAP
 DESIGNED BY: MIA, DIH CHECKED BY: DIH