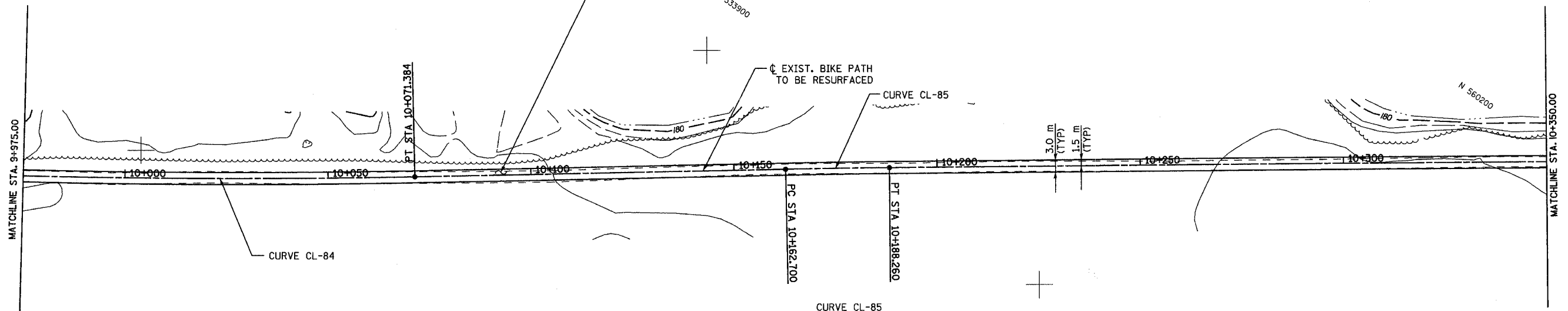


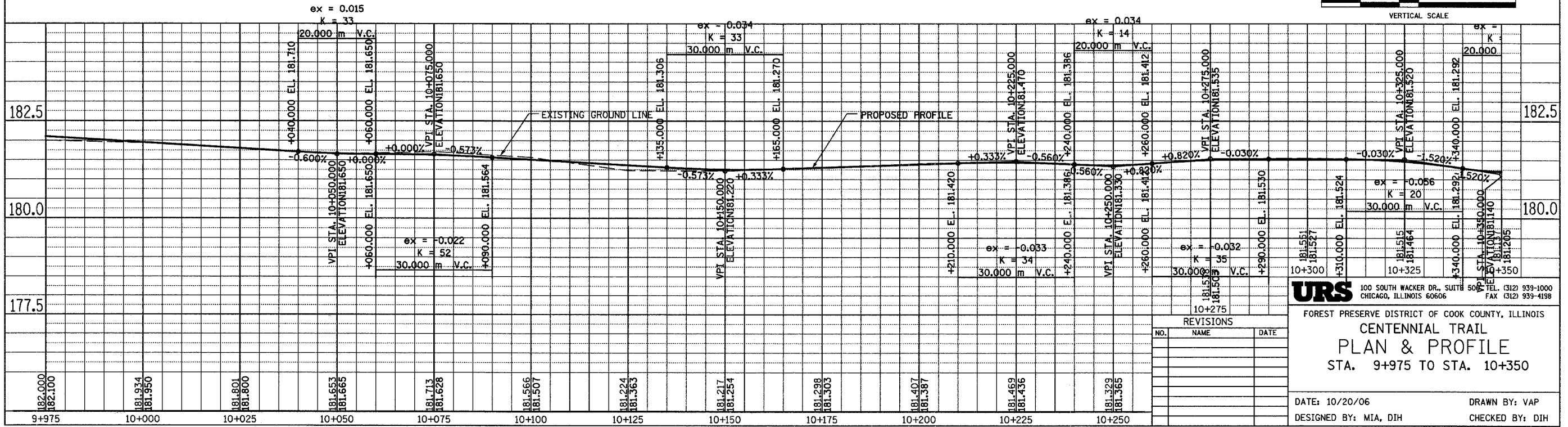
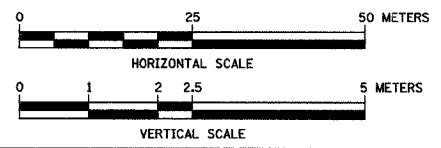
SECTION	COUNTY	TOTAL SHEETS	SHEET NO.
94-F3000-05-BT	COOK	102	38
STA.	TO STA.		
IDOT PROJECT NO. TE-0001610)			
CENTENNIAL TRAIL			
CONTRACT NO. 83859			

CURVE CL-84  
 PI STA = 10+018.482  
 N = 560,002.039  
 E = 333,816.258  
 $\Delta = 3^{\circ} 01' 54''$  (LT)  
 R = 2,000.000 m  
 T = 52.927 m  
 L = 105.828 m  
 E = 0.700 m

PROPOSED BICYCLE TRAIL  
 AGGREGATE BASE COURSE, TYPE B, 150 mm  
 HOT-MIX ASPHALT SURFACE COURSE, MIX C, N50, 50mm  
 PAINT PAVT. MKG. LINE 100 mm (SOLID YELLOW ALONG  $\phi$ )



CURVE CL-85  
 PI STA = 10+175.481  
 N = 560,094.932  
 E = 333,942.858  
 $\Delta = 0^{\circ} 43' 56''$  (RT)  
 R = 2,000.000 m  
 T = 12.780 m  
 L = 25.560 m  
 E = 0.041 m



NO.	NAME	DATE

**URS**  
 100 SOUTH WACKER DR., SUITE 500  
 CHICAGO, ILLINOIS 60606  
 TEL (312) 939-1000  
 FAX (312) 939-4198

FOREST PRESERVE DISTRICT OF COOK COUNTY, ILLINOIS  
**CENTENNIAL TRAIL**  
**PLAN & PROFILE**  
 STA. 9+975 TO STA. 10+350

DATE: 10/20/06  
 DESIGNED BY: MIA, DIH  
 DRAWN BY: VAP  
 CHECKED BY: DIH