

F.A.P. RTE.	SECTION	COUNTY	TOTAL SHEETS	SHEET NO.
	05-00130-00-BR	WILL	41	4
STA.	TO STA.			
FED. ROAD DIST. NO.	ILLINOIS FED. AID PROJECT			
CONTRACT NO. 83689				

**LEGEND:**

- ① AGGREGATE BASE COURSE, TYPE B, 6"
- ② BITUMINOUS PRIME COAT
- ③ HOT-MIX ASPHALT SURFACE COURSE, MIX "C", N50 3"
- ④ 6" TOP SOIL AND SEEDING CLASS 2A
- ⑤ PAINT PAVEMENT MARKING, 4" YELLOW
- ⑥ EXISTING GROUND
- ⑦ GEOTECHNICAL FABRIC FOR GROUND STABILIZATION
- ⑧ AGGREGATE BASE COURSE, TYPE B, 8"
- ⑨ HOT-MIX ASPHALT BINDER COURSE, IL-19.0, N50, 2 1/4"
- ⑩ HOT-MIX ASPHALT SURFACE COURSE, MIX "C", N50 1 1/2"
- ⑪ PORTLAND CEMENT CONCRETE SIDEWALK 6 INCH, SPECIAL
- ⑫ MSE WALL - HEIGHT VARIES FROM '0-0" TO 10'-11-3/4" FROM GROUND, 3'-6" (MIN.) BELOW GRADE

**NOTE 1:**  
AT LOCATIONS OF UNSUITABLE MATERIAL, AS DETERMINED BY THE ENGINEER, THE SUBGRADE TREATMENT WILL CONSIST OF EXCAVATION OF UNSUITABLE MATERIAL TO A DEPTH 12 INCHES BELOW AGGREGATE BASE COURSE AND PLACEMENT OF 12 INCHES OF POROUS GRANULAR EMBANKMENT SUBGRADE AND A GEOTECHNICAL FABRIC FOR GROUND STABILIZATION.

**NOTE 2:**  
THE CONTRACTOR SHALL CONSTRUCT THE PATH SO THAT THE CROSS SLOPE IS IN THE DIRECTION OF THE GROUND SLOPE WHERE SHEET FLOW ACROSS THE PATH WILL OCCUR. WHERE SHEET FLOW ACROSS THE PATH IS NOT A CONCERN DUE TO THE PRESENCE OF A SWALE ON THE UPSTREAM SIDE, THE CONTRACTOR SHALL SLOPE THE PATH OUT FROM THE CENTERLINE.

**NOTE 3:**  
ADDITIONAL FILL MATERIAL TO BE PLACED ABOVE FABRIC IN CUT SECTIONS SHALL NOT BE MEASURED FOR PAYMENT. MATERIAL SHALL BE SUITABLE EMBANKMENT MATERIAL.

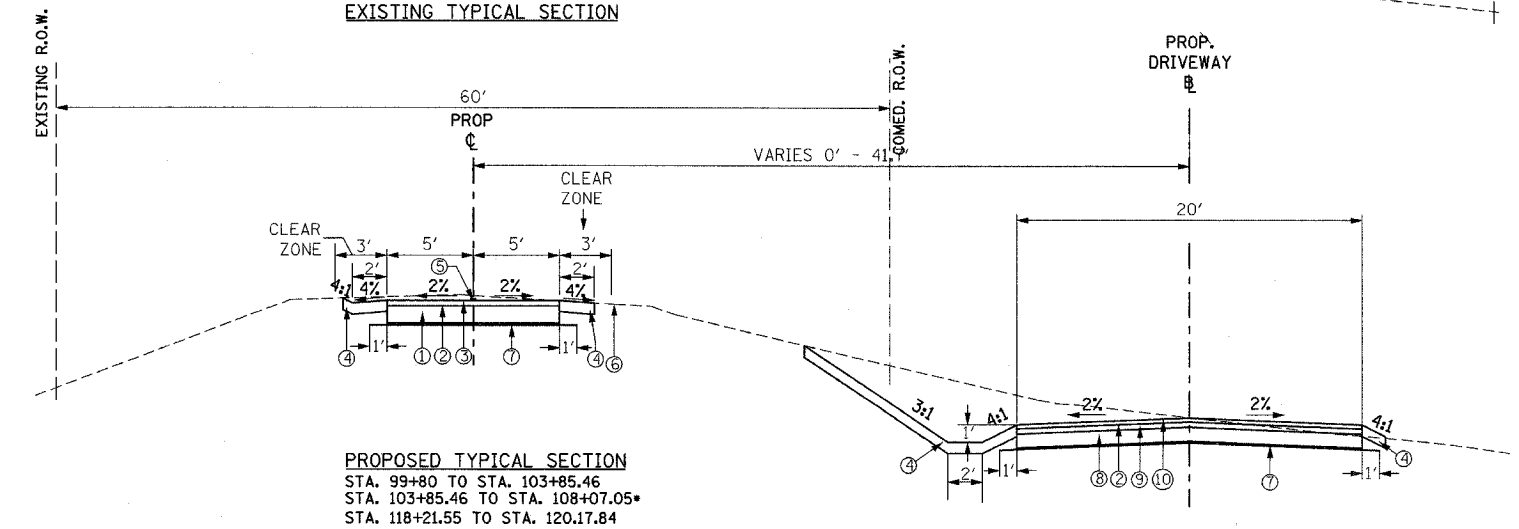
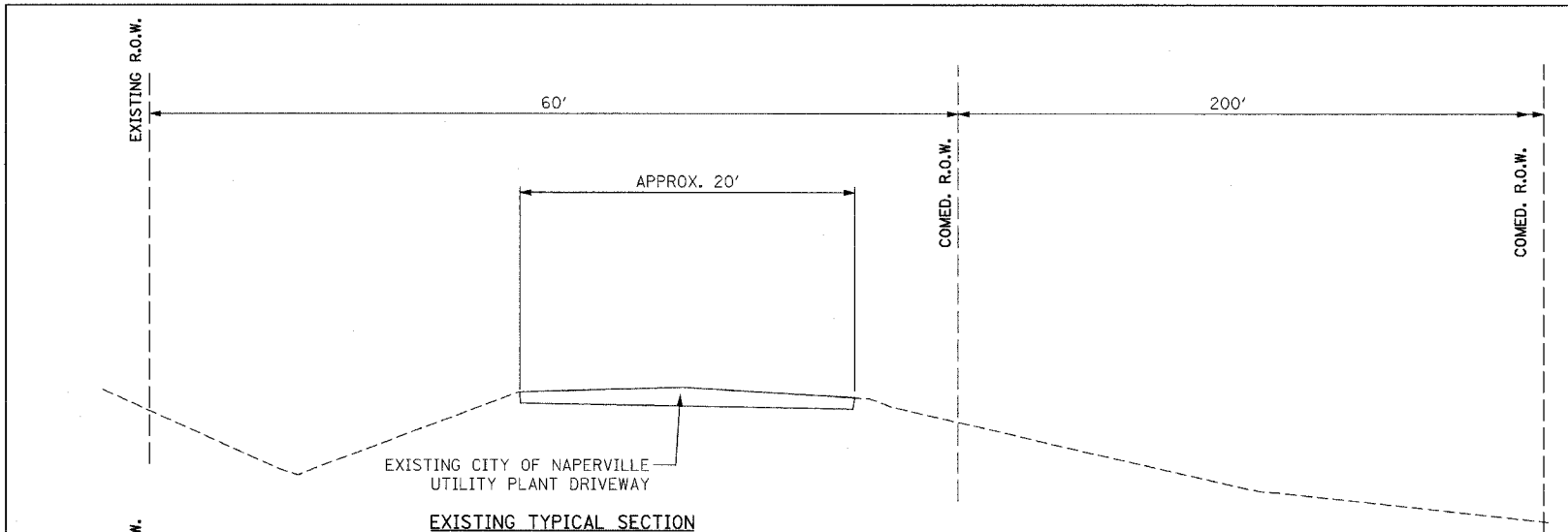
**NOTE 4:**  
BIKE PATH AND DRIVEWAY AREAS SHALL HAVE GEOTECHNICAL FABRIC FOR GROUND STABILIZATION INSTALLED BENEATH THE AGGREGATE BASE COURSE.

Hot-Mix Asphalt Mixture Requirements		
MIXTURE TYPE	AC TYPE	AIR VOIDS
HOT-MIX ASPHALT SURFACE COURSE, MIX "C", N50	PG 64-22	4% @ 50 GYR
HOT-MIX ASPHALT BINDER COURSE, IL-19.0, N50	PG 64-22*	4% @ 50 GYR

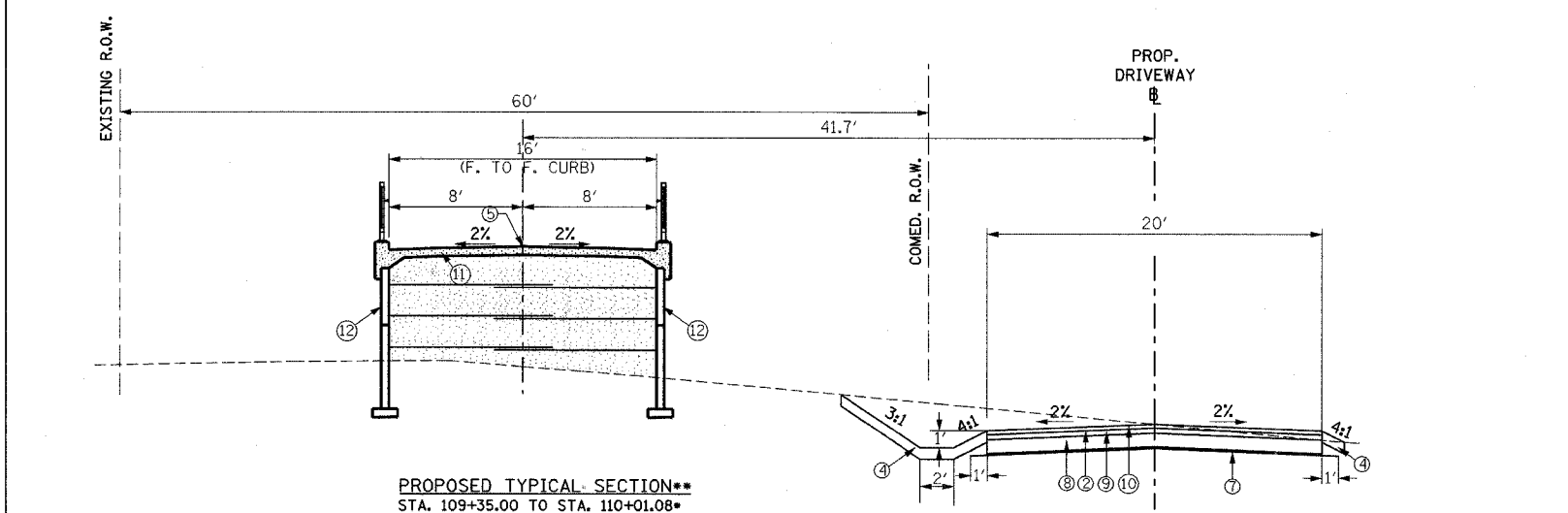
THE UNIT WEIGHT USED TO CALCULATE ALL HOT-MIX ASPHALT SURFACE MIXTURE QUANTITIES IS 112 LBS/SQ-YD/IN.  
\* WHEN RAP EXCEEDS 20%, THE NEW ASPHALT BINDER IN THE MIX SHALL BE PG 58-22.

\* STATIONS INCLUDING COMMERCIAL DRIVE

\*\* SEE BRIDGE DETAILS FOR RAMP SPAN, ABUTMENT, M.S.E. WALL TYPICAL CROSS SECTION DETAILS



**PROPOSED TYPICAL SECTION**  
STA. 99+80 TO STA. 103+85.46  
STA. 103+85.46 TO STA. 108+07.05\*  
STA. 118+21.55 TO STA. 120.17.84



**PROPOSED TYPICAL SECTION\*\***  
STA. 109+35.00 TO STA. 110+01.08\*  
STA. 116+03.12 TO STA. 117+90.00

**BRIDGE OMISSION\*\***  
STA. 110+01.08 TO STA. 112+60.41\*  
STA. 112+60.41 TO STA. 116+03.12

REVISIONS		NAME	DATE
NO.	DESCRIPTION		

**URS**

100 S. WACKER DR, STE 500  
CHICAGO, IL 60606

TEL (312) 939-1000  
FAX (939) 939-4198

CITY OF NAPERVILLE

**TYPICAL CROSS SECTIONS**

SCALE: \_\_\_\_\_

DATE: 12/8/2006

DRAWN BY: DGM

CHECKED BY: DDL