

STATE OF ILLINOIS  
DEPARTMENT OF TRANSPORTATION

ROUTE NO.	SECTION	COUNTY	TOTAL SHEETS	SHEET NO.
F.A.P.	05-00130-00-BR	WILL	41	20
FED. ROAD DIST. NO. 7		ILLINOIS FED. AID PROJECT-		

SHEET NO. 8  
OF 23 SHEETS

CONTRACT NO. 83889

**BILL OF MATERIAL**

Bar	Size	Length	Shape	No. Pier 3
h1(E)	#5	17'-3"	—	11
n1(E)	#9	10'-11"	—	30
p1(E)	#10	22'-6"	—	7
s1(E)	#5	22'-6"	—	8
s2(E)	#5	16'-7"	—	7
s3(E)	#5	10'-8"	—	7
s4(E)	#5	12'-8"	—	7
s5(E)	#5	13'-0"	—	12
t1(E)	#8	9'-8"	—	28
u1(E)	#6	15'-6"	—	14
u2(E)	#6	8'-5"	—	14
u3(E)	#6	11'-7"	—	8
u4(E)	#6	14'-11"	—	8
u5(E)	#6	20'-3"	—	8
u6(E)	#5	6'-11"	—	24
v2(E)	#9	20'-2"	—	30
w2(E)	#8	13'-2"	—	40
Concrete Structures				Cu. Yd. 40
Reinforcement Bars, Epoxy Coated				lb. 8,060
Structure Excavation				Cu. Yd. 36.3
Concrete Sealer				Sq. Ft. 606
Furnishing Steel				Foot 339
HP12x53 Piles				Foot 339
Driving Piles				Foot 339
Test Pile Steel HP 12x53				Each 1
Pile Shoes				Each 8
Form Liner Textured Surface				Sq. Ft. 165.2

**DATA TABLE**

	EL. "A"	EL. "B"	"H1"	"H2"	NI	EL. "C"	EL. "D"	EL. "E"
Pier 3	707.51	683.45	24'-0 <sup>3</sup> / <sub>4</sub> "	6'-1 <sup>3</sup> / <sub>8</sub> "	7	684.45	644.45	706.12

**NOTES:**

1. Reinforcement Bars designated (E) shall be epoxy coated.
2. Concrete clear cover shall be 2" minimum unless noted otherwise.
3. For Anchor Bolt Details, see Sheet 9. Truss fabricator shall determine size and location of anchor bolts. Cost included with PEDESTRIAN TRUSS SUPERSTRUCTURE.
4. All edges shall have standard <sup>3</sup>/<sub>4</sub>" chamfers except as noted.
5. Min. Lap for Bar #5 = 2'-2", #6 = 2'-7", #9 = 5'-9".
6. Space Reinforcement in Cap to miss Anchor Bolts.
7. For Architectural treatment of Piers see "Architectural Details" drawing.

**PILE DATA**

Type - Steel H-Piles (HP12x53)  
Allowable Resistance Available = 100 Kips  
Nominal Required Bearing = 300 Kips  
Est. Length - 47 ft (Pier 3) 12V:2H  
49 ft (Pier 3) 12V:4H  
No. Req'd. - 7 per Pier  
Test Piles - 1 per Pier

**LEGEND**

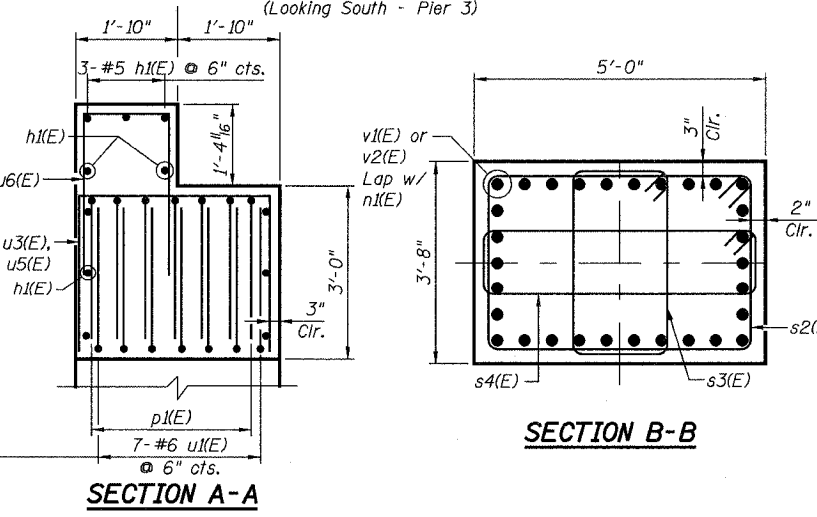
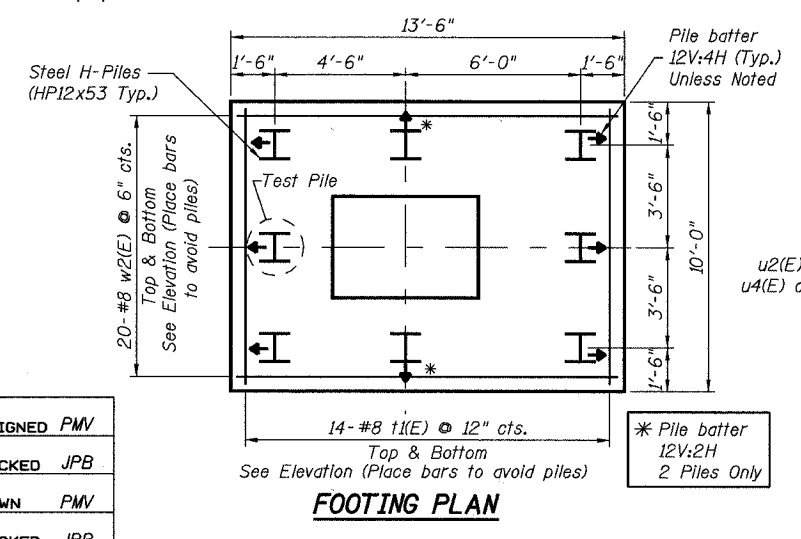
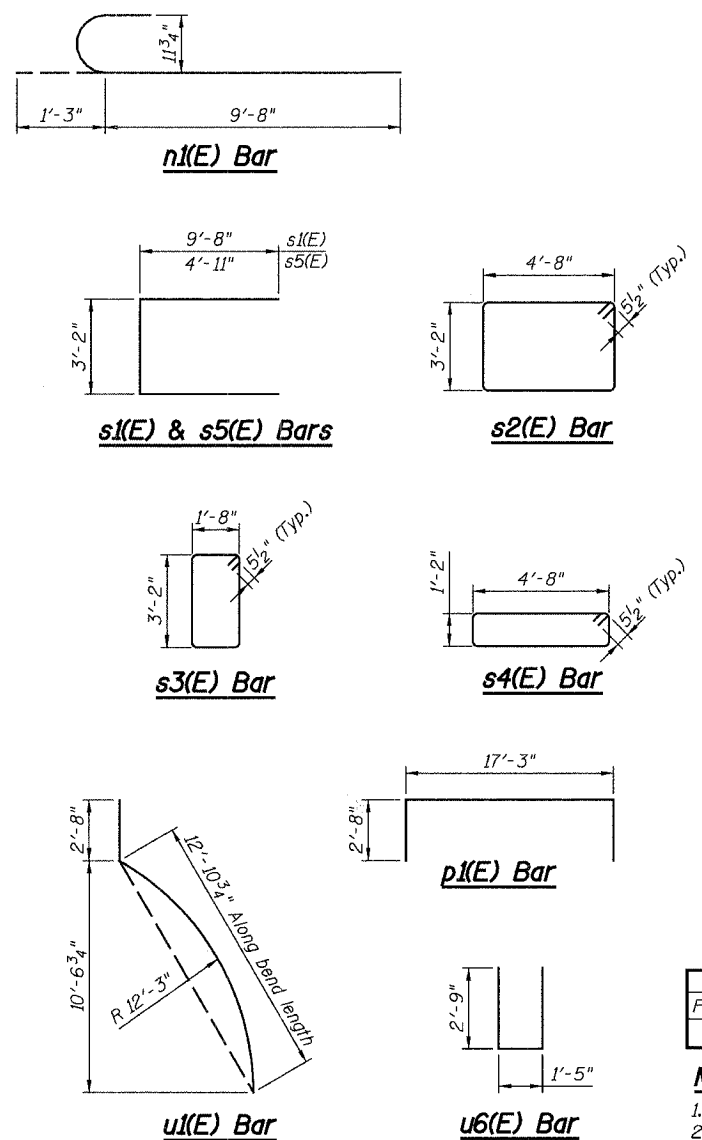
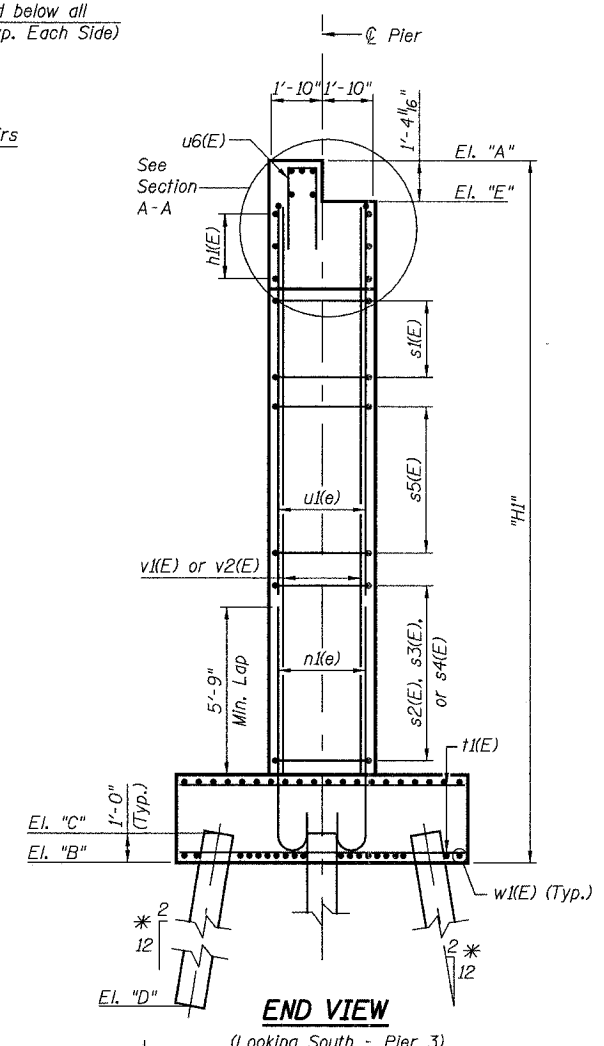
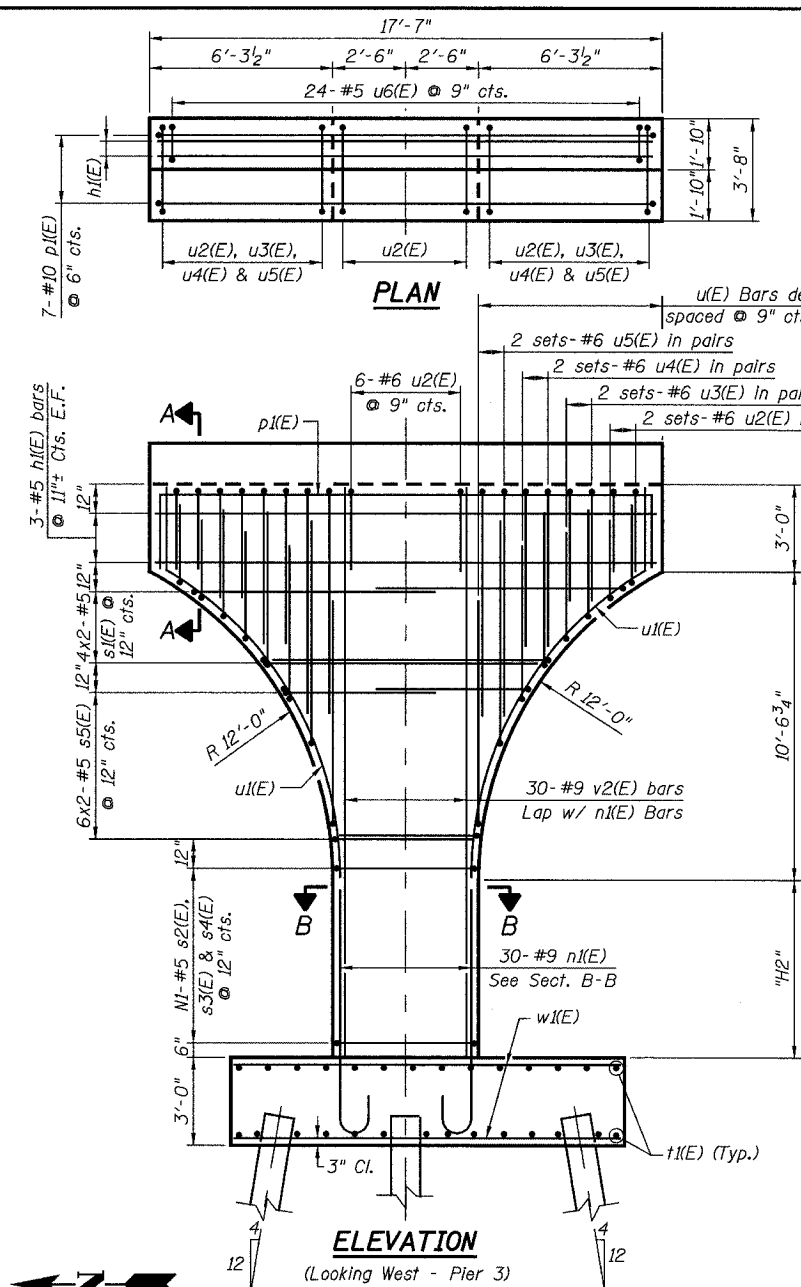
E.F. = Each Face  
N.F. = Near Face  
F.F. = Far Face  
↖ Indicates direction of Pile Batter

REVISIONS	
NAME	DATE

ILLINOIS DEPARTMENT OF TRANSPORTATION  
**PIER 3 DETAILS**

ROUTE 59 PEDESTRIAN BRIDGE  
CITY OF NAPERVILLE, WILL COUNTY

F.A.P. RTE. SECTION: 05-00130-00-BR  
STATION 113+02.46 STRUCTURE NO. 099-6002  
SCALE: N.T.S. DATE: 12/8/2006



C:\ngperville\_25365506\_pedbridge\_bcidoe\_pre-final\_plans\drawings\08\_pier\_3\_details.dgn 1/10/2007 2:35:14 PM

DESIGNED PMV  
CHECKED JPB  
DRAWN PMV  
CHECKED JPB