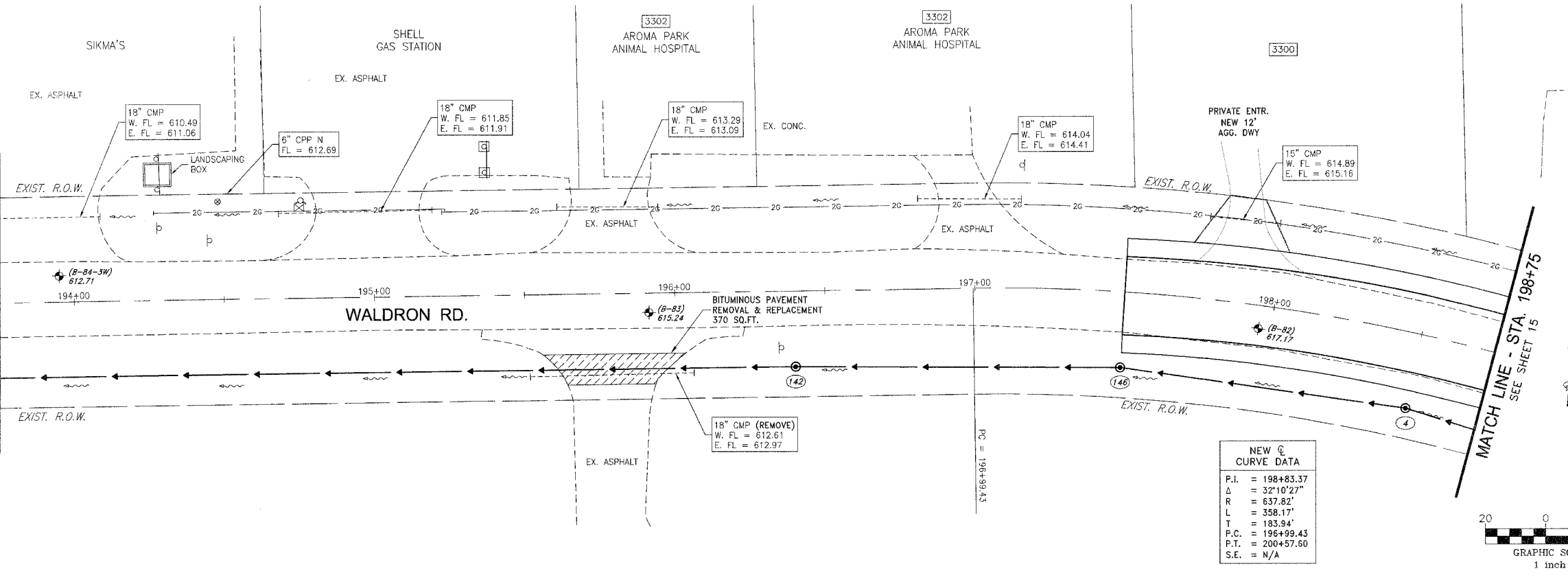


SEE SHEET 13
MATCH LINE - STA. 193+75

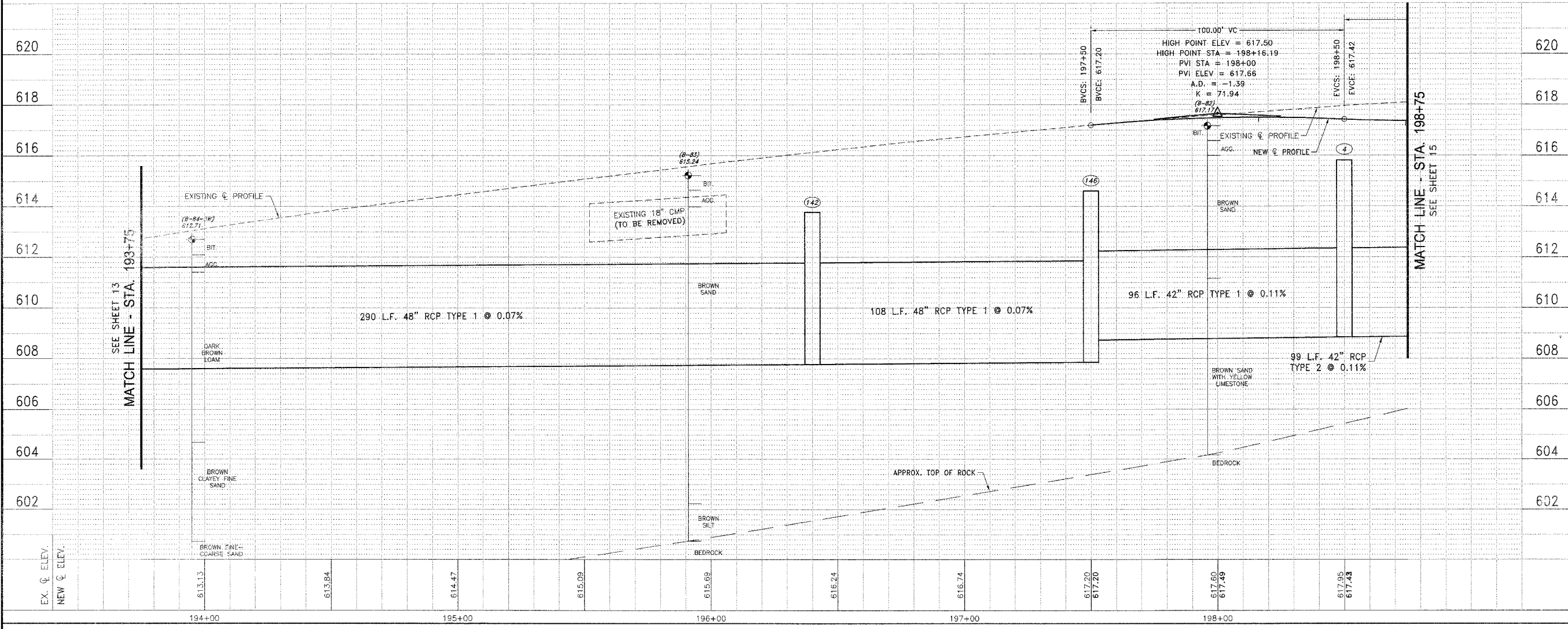
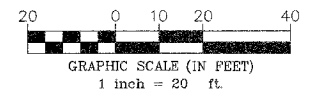
SEE SHEET 13
MATCH LINE - STA. 193+75

MATCH LINE - STA. 198+75
SEE SHEET 15



NEW C CURVE DATA

P.I.	= 198+83.37
Δ	= 32°10'27"
R	= 637.82'
L	= 358.17'
T	= 183.94'
P.C.	= 196+99.43
P.T.	= 200+57.60
S.E.	= N/A



FAU SITE	SECTION	COUNTY	TOTAL SHEETS	SHEET NO.
**	KANKAKEE	B3	14	
CONTRACT NO. 87314				
FED. ROAD DIST. NO. ILLINOIS FED. AID PROJECT				
* LOWE RD. FAU 6209/WALDRON RD. FAU 6184				
** 02-00284-00-WR & 01-00017-00-FP				
TYSON ENGINEERING, INC.				
CONSULTING CIVIL ENGINEERS LAND SURVEYORS DESIGN FIRM LICENSE #184-001136				
367 SOUTH SCHUYLER AVENUE KANKAKEE, ILLINOIS 60901 PHONE (815) 932-7406				
This document and the ideas and designs incorporated herein, as an instrument of professional service, is the property of Tyson Engineering Inc. and is not to be used in whole or in part, for any other project without written authorization of Tyson Engineering Inc.				
Do not scale drawings. Use dimensions only.				
Contractor shall be responsible for verifying all dimensions.				
Information hereon and herein is confidential.				
REVISIONS				
NO.	DATE	BY	DESCRIPTION	
3	10/24/06	MRG	PER IDOT REVIEW	
4	12/29/06	MRG	PER COUNTY REV	
WALDRON ROAD PLAN AND PROFILE STA. 193+75 TO STA. 198+75				
PROPOSED IMPROVEMENTS FOR LOWE ROAD FROM IL-17 TO WALDRON ROAD WALDRON ROAD FROM CORP. LIMITS TO DIVISION STREET				
SECTION 02-00284-00-WR & 01-00017-00-FP				
DATE:	07/10/06	JOB NO.	E01015	
SCALE:	HORIZ.: 1"=20' VERT.: 1"=2'	FILE NO.		
DRAWN BY:	MRG	SHEET	14	
CHECKED BY:	SRM		83	

P:\2006\ED01015.dwg\ED01015-AROMA PARK-PROFILE.dwg 1/17/2007 10:02:44 AM CST