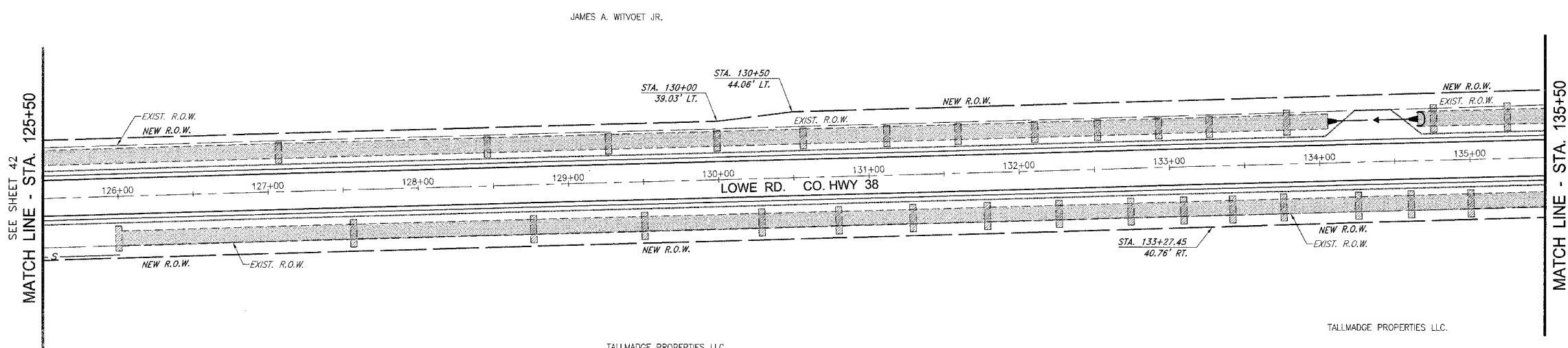


PA\2006\01015\dwg\ER01015-CH\_28.dwg 1/17/2007 10:40:25 AM CST



**EROSION CONTROL LEGEND**

- NEW INLET
- NEW MANHOLE
- ▼ NEW FLARED END SECTION
- INLET AND PIPE PROTECTION
- C CULVERT INLET PROTECTION
- ▨ STRAW BALE DITCH CHECK
- S PERIMETER EROSION BARRIER
- ▨ RIP-RAP
- ▨ GEOTEXTILE EROSION CONTROL FABRIC

CONTRACT NO. 87314  
 ILLINOIS FED. AID PROJECT  
 \* LOWE RD. FAU 6209/WALDRON RD. FAU 6184  
 \*\* 02-00284-00-WR & 01-00017-00-FP

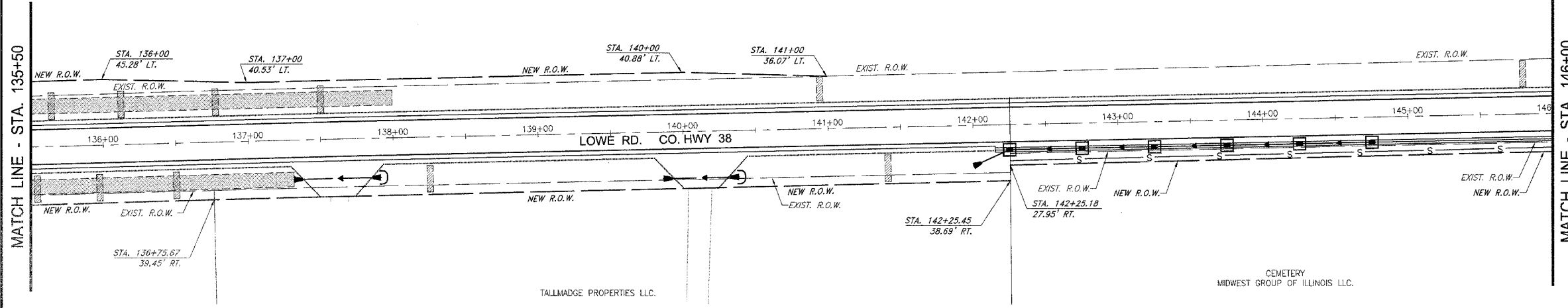
**TYSON ENGINEERING, INC.**  
 CONSULTING CIVIL ENGINEERS  
 LAND SURVEYORS  
 DESIGN FIRM LICENSE # 04-001136  
 367 SOUTH SCHUYLER AVENUE  
 KANKAKEE, ILLINOIS 60901  
 PHONE (815) 932-7406

This document and the ideas and designs incorporated herein, as an instrument of professional service, is the property of Tyson Engineering Inc. and is not to be used in whole or in part, for any other project without written authorization of Tyson Engineering Inc.

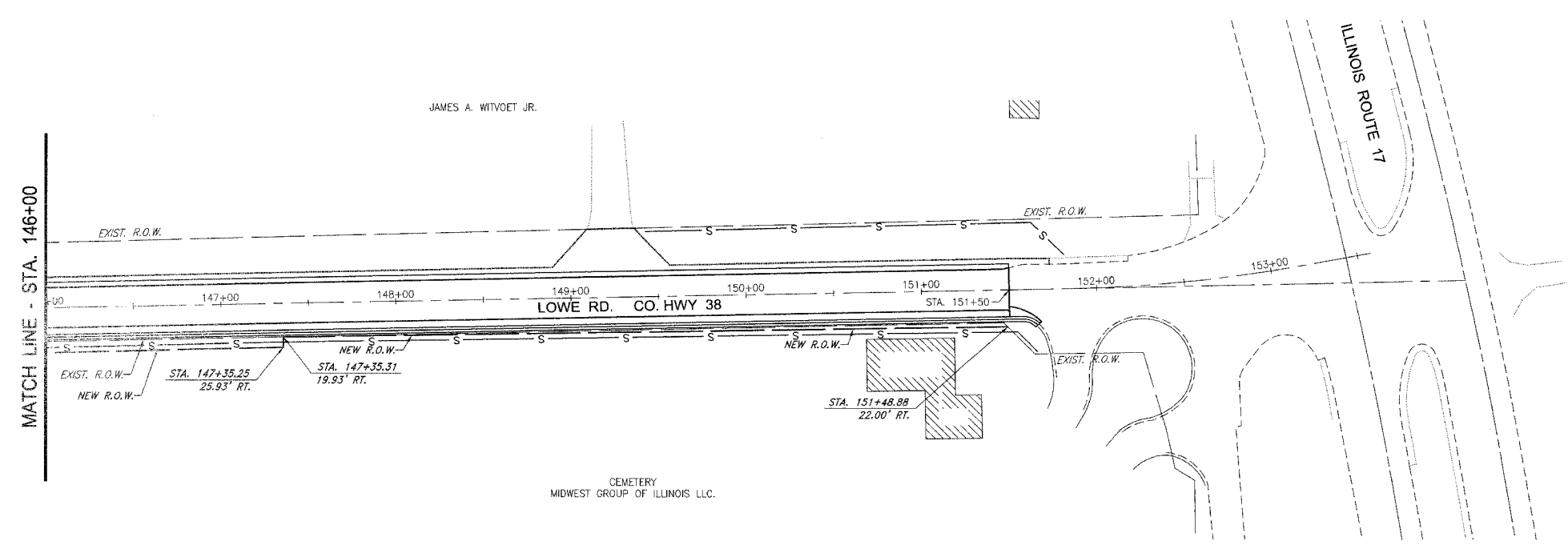
Do not scale drawings. Use dimensions only.  
 Contractor shall be responsible for verifying all dimensions.  
 Information herein and herein is confidential.

**REVISIONS**

NO.	DATE	BY	DESCRIPTION
3	10/24/06	MRG	PER IDOT REVIEW
4	12/29/06	MRG	PER COUNTY REV



LOWE ROAD  
 EROSION CONTROL  
 STA. 125+50 TO STA. 151+50



PROPOSED IMPROVEMENTS FOR  
**LOWE ROAD**  
 FROM IL-17 TO WALDRON ROAD  
**WALDRON ROAD**  
 FROM CORP. LIMITS TO DIVISION STREET

SECTION  
 02-00284-00-WR &  
 01-00017-00-FP

DATE: 07/10/06	JOB NO. E01015
SCALE: HORZ.: 1"=40' VERT.: N/A	FILE NO.
DRAWN BY: MRG	SHEET
CHECKED BY: SRM	<b>41</b>

83

