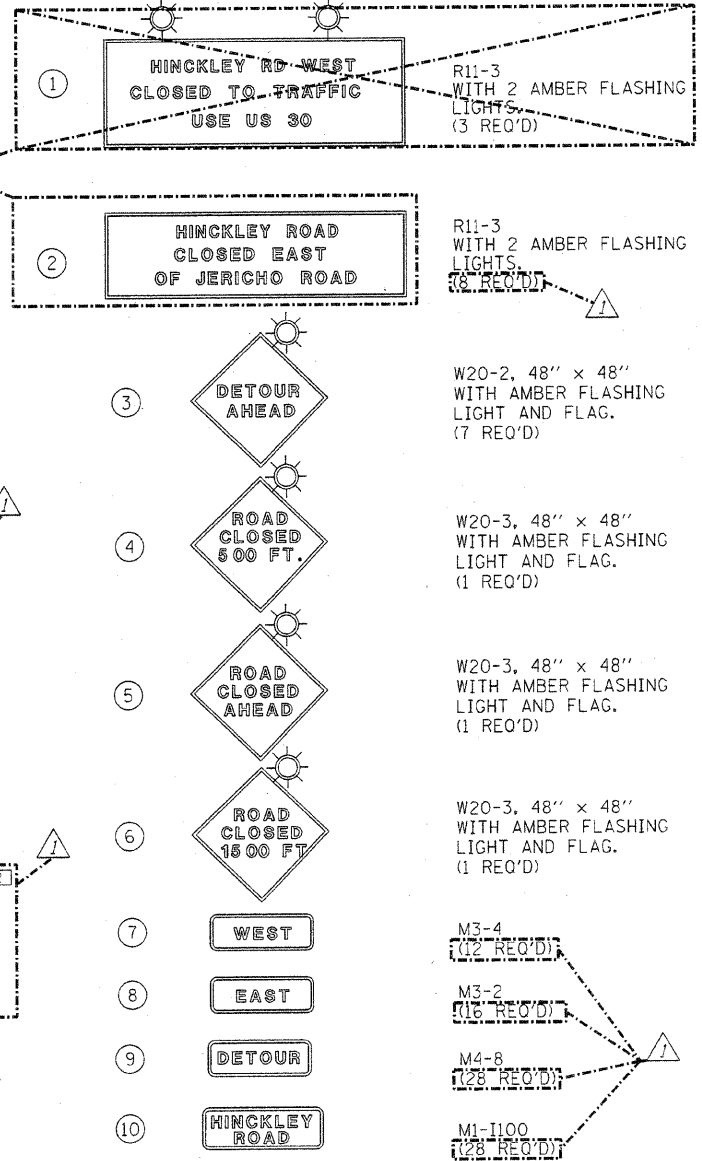


PLAN  
SEE SHEET 7 FOR PRE-DETOUR INFORMATION

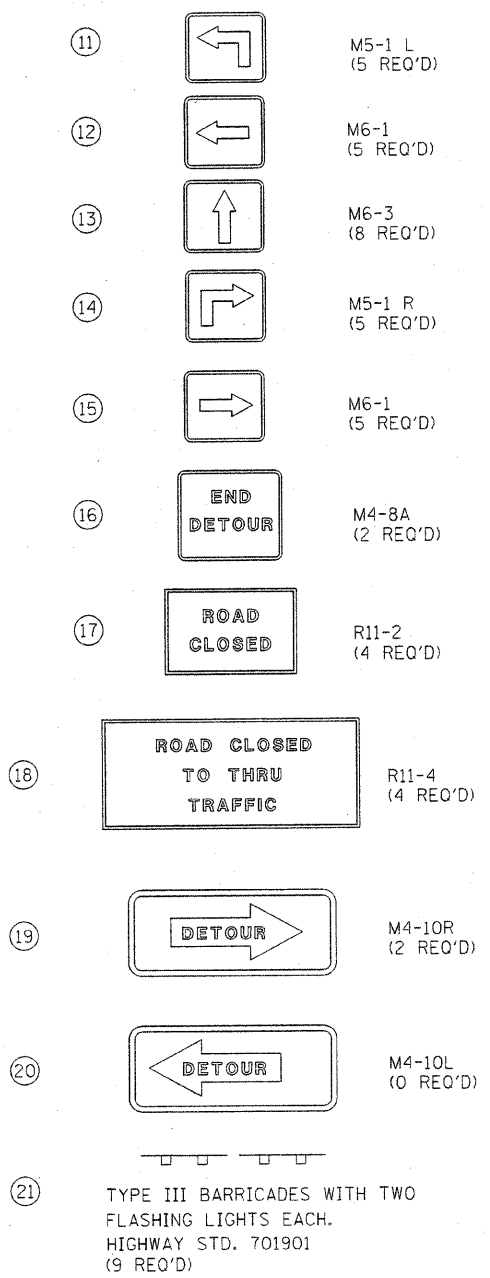
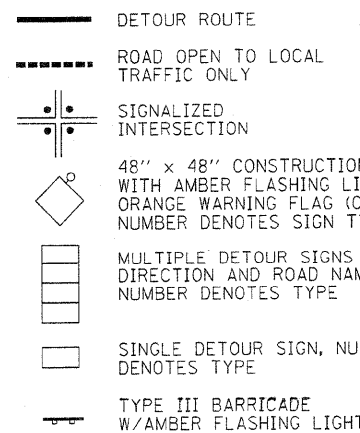
\* NOTE: STAGGER BARRICADES TO ALLOW LOCAL TRAFFIC TO PROCEED.  
NO WORKERS SHALL BE WITHIN 50 FT OF RAILROAD.

Revised - 03/29/12 - J.W.F.

**SIGN LEGEND**



**LEGEND**



**SPECIAL DETOUR NOTES**

1. THE CONTRACTOR SHALL PAY PARTICULAR ATTENTION TO THE DETOUR GENERAL NOTES, SEE SHEET 7 FOR THE DETOUR GENERAL NOTES.
2. SEE SHEET 7 FOR INFORMATION ON THE DESIGN AND LOCATION OF THE DETOUR INFORMATION SIGNS.
3. NINE (9) TYPE III BARRICADES WILL BE NEEDED FOR THIS DETOUR AND ROAD CLOSURE. THE TYPE III BARRICADES SHALL BE INSTALLED AS WING BARRICADES.
4. PRIOR TO AND AT THE CONCLUSION OF THIS ROAD CLOSURE AND DETOUR, ALL EXISTING TRAFFIC SIGNS SHALL BE IN EFFECT. DETOUR SIGNING SHALL NOT INTERFERE WITH EXISTING SIGNING.
5. ALL DETOUR SIGNS SHALL BE COMPLETELY COVERED AT ALL TIMES THE ROADWAY IS NOT CLOSED TO TRAFFIC.

FILE NAME = 100031-sht-detour.dgn	USER NAME =	DESIGNED - J.W.F.	REVISED -
HAMPTON, LENZINI AND RENWICK, INC.		DRAWN - D.A.B.	REVISED -
3045 STEVENSON DRIVE, SUITE 201 SPRINGFIELD, ILLINOIS 62761		CHECKED - S.W.M.	REVISED -
ILLINOIS PROFESSIONAL DESIGN FIRM LS / PE / SE CORP. 184.000959	PLOT SCALE =	DATE - 02/01/12	REVISED -
	PLOT DATE = 3/29/2012		

STATE OF ILLINOIS  
DEPARTMENT OF TRANSPORTATION

<b>DETOUR PLAN</b>	
<b>T.R. 193 / HINCKLEY ROAD</b>	
SCALE:	SHEET NO. 1 OF 2 SHEETS STA. TO STA.

T.R.	SECTION	COUNTY	TOTAL SHEETS	SHEET NO.
193	07-03011-01-BR	KANE	29	6
BIG ROCK TOWNSHIP			CONTRACT NO. 63699	
ILLINOIS FED. AID PROJECT BROS-00891381				