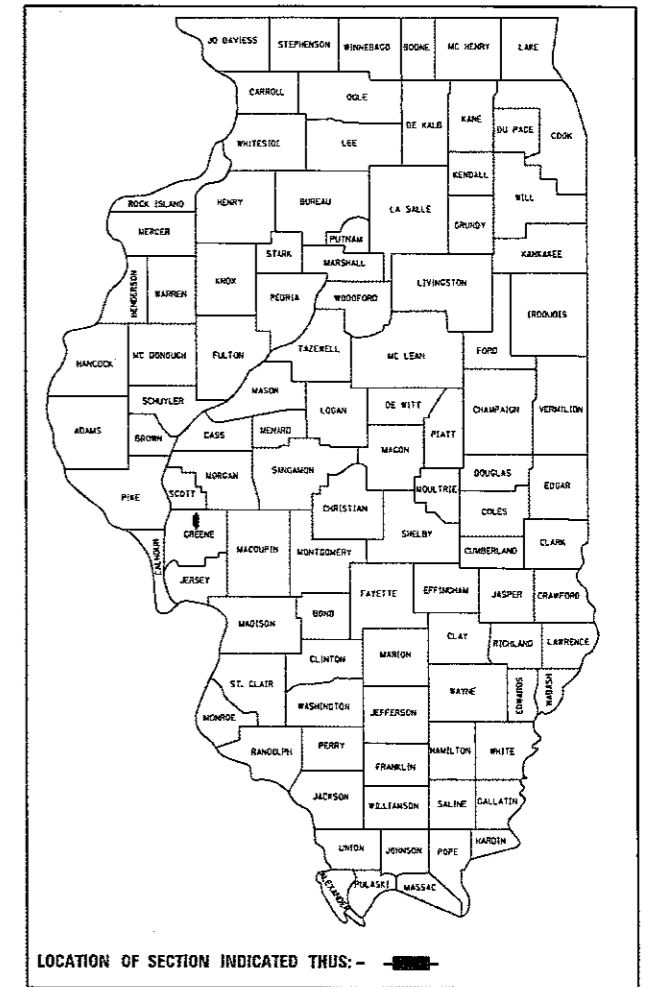


STATE OF ILLINOIS
DEPARTMENT OF TRANSPORTATION

F.A.P. F.A.S. 310 733	SECTION 151-1,52-1,53,54,55)RS-4	COUNTY GREENE	TOTAL SHEETS 24	SHEET NO. 1
ILLINOIS			CONTRACT NO. 76K31	

D-98-053-17



PROPOSED HIGHWAY PLANS

FAP ROUTE 310 /FAS ROUTE 733 (US 67)
SECTION (51-1,52-1,53,54,55)RS-4
PROJECT NHPP-LMG2(791)
RESURFACING - 3P
GREENE COUNTY

C-98-200-18

FOR INDEX OF SHEETS, SEE SHEET NO. 2

PALMYRA ROAD TO CORSA ROAD
2017 ADT = 4100 (ACTUAL)
2037 ADT = 4600 (ESTIMATED)
SU = 3.4% MU = 7.3%

CORSA ROAD TO BERDAN ROAD
2017 ADT = 3950 (ACTUAL)
2037 ADT = 4450 (ESTIMATED)
SU = 3.3% MU = 7.6%

BERDAN ROAD TO CEMETERY ROAD
2017 ADT = 3850 (ACTUAL)
2037 ADT = 4300 (ESTIMATED)
SU = 2.9% MU = 7.8%

BEGIN PROJECT
STA. 407 + 56.99
LATITUDE: 39.425480
LONGITUDE: -90.404598

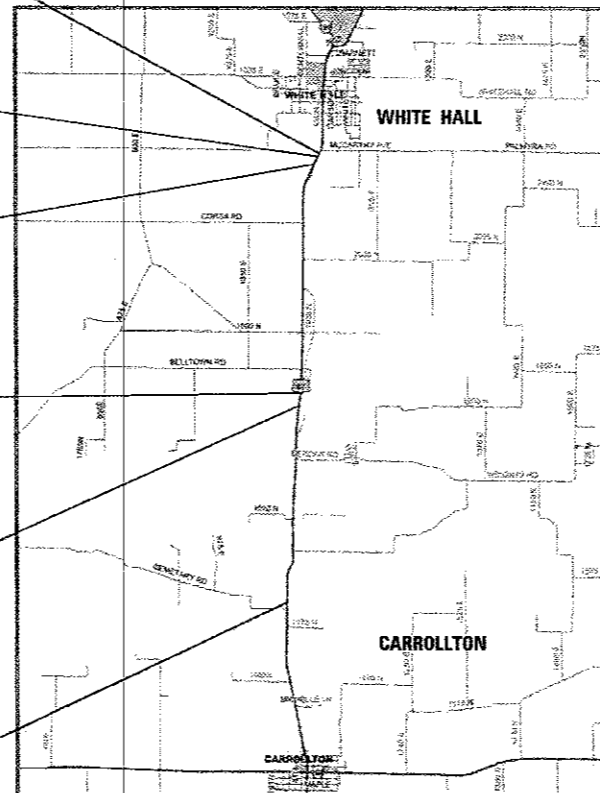
BEGIN RESURFACING
(0.1 MI SOUTH OF McARTHUR AVE)
STA. 407 + 86.99

BRIDGE OMISSION
SN 031-0029
STA. 413 + 39.25 TO
STA. 414 + 87.83

BRIDGE OMISSION
SN 031-0030
STA. 576 + 38.50 TO
STA. 577 + 90.02

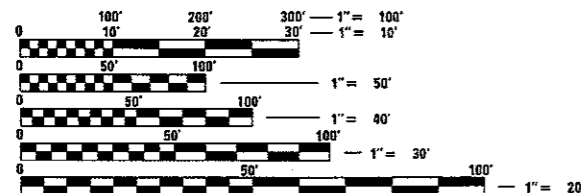
BRIDGE OMISSION
SN 031-0031
STA. 588 + 48.52 TO
STA. 596 + 65.43

END RESURFACING
(0.1 MI NORTH OF CEMETERY RD)
STA. 736 + 28.59
LATITUDE: 39.33607
LONGITUDE: -90.41293



R 12 W
NOT TO SCALE
LOCATION MAP

GROSS LENGTH = 32871.60 FT. = 6.226 MILE
NET LENGTH = 31754.59 FT. = 6.014 MILE



FULL SIZE PLANS HAVE BEEN PREPARED USING STANDARD ENGINEERING SCALES. REDUCED SIZED PLANS WILL NOT CONFORM TO STANDARD SCALES. IN MAKING MEASUREMENTS ON REDUCED PLANS, THE ABOVE SCALES MAY BE USED.

J.U.L.I.E.
JOINT UTILITY LOCATION INFORMATION FOR EXCAVATION
1-800-892-0123
OR 811

PROJECT ENGINEER HERVE GELIN 618-346-3179
SQUAD LEADER BILLIE OWEN 618-346-3209

CONTRACT NO. 76K31

STATE OF ILLINOIS
DEPARTMENT OF TRANSPORTATION

SUBMITTED Feb 1 2018
Jeffrey Z. K...
REGIONAL ENGINEER

Mar 23 2018
[Signature]
ENGINEER OF DESIGN AND ENVIRONMENT

Mar 23 2018
[Signature]
DIRECTOR OF HIGHWAYS PROJECT IMPLEMENTATION

PRINTED BY THE AUTHORITY
OF THE STATE OF ILLINOIS

INDEX OF SHEETS

- 1 COVER SHEET
- 2 INDEX OF SHEETS, HIGHWAY STANDARDS, GENERAL NOTES & COMMITMENTS
- 3-6 SUMMARY OF QUANTITIES
- 7-9 TYPICAL SECTIONS
- 10-12 SCHEDULES
- 13-15 GUARDRAIL
- 16-18 WINGWALL MODIFICATION
- 19-22 DRAINAGE DETAILS
- 23 SIDE ROAD DETAILS
- 24 SCOUR DETAILS

HIGHWAY STANDARDS

- 000001-06 STANDARD SYMBOLS, ABBREVIATIONS AND PATTERNS
- 001006 DECIMAL OF AN INCH AND OF A FOOT
- 280001-07 TEMPORARY EROSION CONTROL SYSTEMS
- 482011-03 HMA SHOULDER STRIPS/SHOULDERS WITH RESURFACING OR WIDENING AND RESURFACING PROJECTS
- 602306-03 INLET, TYPE B
- 602401-04 MANHOLE TYPE A
- 604001-04 FRAME AND LIDS TYPE 1
- 606001-07 CONCRETE CURB TYPE B AND COMBINATION CONCRETE CURB AND GUTTER
- 606101-05 TYPE A GUTTER (INLET, OUTLET, AND ENTRANCE)
- 630001-12 STEEL PLATE BEAM GUARDRAIL
- 631031-15 TRAFFIC BARRIER TERMINAL, TYPE 6
- 642006 SHOULDER RUMBLE STRIPS, 8 IN.
- 701001-02 OFF-ROAD OPERATIONS, 2L, 2W, MORE THAN 15' (4.5 M) AWAY
- 701006-05 OFF-ROAD OPERATIONS, 2L, 2W, 15' (4.5 M) TO 24' (600 MM) FROM PAVEMENT EDGE
- 701201-04 LANE CLOSURE, 2L, 2W, DAY ONLY, FOR SPEEDS 45 MPH
- 701301-04 LANE CLOSURE, 2L, 2W, SHORT TIME OPERATIONS
- 701306-04 LANE CLOSURE, 2L, 2W, SLOW MOVING OPERATIONS DAY ONLY, FOR SPEEDS 45 MPH
- 701311-03 LANE CLOSURE, 2L, 2W, MOVING OPERATIONS - DAY ONLY
- 701336-06 LANE CLOSURE, 2L, 2W, WORK AREAS IN SERIES, FOR SPEEDS 45 MPH
- 701901-07 TRAFFIC CONTROL DEVICES
- 725001-01 OBJECT AND TERMINAL MARKERS
- 780001-05 TYPICAL PAVEMENT MARKINGS
- 781001-04 TYPICAL APPLICATIONS RAISED REFLECTIVE PAVEMENT MARKERS
- 782006 GUARDRAIL AND BARRIER WALL REFLECTOR MOUNTING DETAILS

GENERAL NOTES

1. ILLINOIS STATE LAW REQUIRES A 48-HOUR NOTICE BE GIVEN TO ALL UTILITIES WITHIN THE PROJECT AREA BEFORE DIGGING. FIELD MARKING OF FACILITIES MAY BE OBTAINED BY CONTACTING J.U.L.I.E. OR FOR NON-MEMBERS, THE UTILITY COMPANY DIRECTLY. AGENCIES KNOWN TO HAVE FACILITIES WITHIN THE PROJECT AREA ARE AS FOLLOWS:

UTILITY	ABOVE GROUND	BELOW GROUND
*AMEREN ILLINOIS	X	X
*FRONTIER COMMUNICATIONS	X	X
*GREENE COUNTY RURAL WATER DISTRICT		X
*NEWWAVE COMMUNICATIONS		X
*CITY OF WHITE HALL (WATER & SANITARY SEWER)		X
*CITY OF WHITE HALL (GAS)		X

MEMBERS OF J.U.L.I.E. CALL TOLL FREE (800) 892-0123 OR 811 AND ARE INDICATED BY
 • NON- J.U.L.I.E. MEMBERS MUST BE NOTIFIED INDIVIDUALLY.

2. THE CONTRACTOR AND THE ENGINEER SHALL BE AWARE THAT NO SURVEY WAS PERFORMED FOR THIS PROJECT. THE STATIONING SHOWN IN THE PLAN SHEETS WAS CREATED USING MICROFILM. IT SHALL BE ASSUMED TO BE APPROXIMATE. THE CONTRACTOR SHALL VERIFY DIMENSIONS AND CONDITIONS IN THE FIELD PRIOR TO CONSTRUCTION AND ORDERING OF MATERIALS.
3. THE THICKNESS OF HOT-MIX ASPHALT SURFACE MIXTURES SHOWN ON THE PLANS IS THE NOMINAL THICKNESS. DEVIATIONS MAY OCCUR DUE TO IRREGULARITIES IN THE EXISTING SURFACE OR BASE ON WHICH THE BITUMINOUS MIXTURE IS PLACED.
4. THE CONTRACTOR SHALL PROVIDE POSITIVE AND ADEQUATE DRAINAGE AT ALL TIMES.
5. THE CONTRACTOR MUST MAINTAIN TWO 10' LANES WHILE UNDER TWO LANE, TWO WAY TRAFFIC.
6. THE FOLLOWING MIXTURE REQUIREMENTS ARE APPLICABLE FOR THIS PROJECT:

MIXTURE USE	SURFACE	LEVEL BINDER	SHOULDERS ≥ 2.25"	SHOULDERS < 2.25"
AC/PG	PG 64-22	PG 64-22	PG 64-22	PG 64-22
RAP % (MAX)	SEE SPECIAL PROVISION	SEE SPECIAL PROVISION	SEE SPECIAL PROVISION	SEE SPECIAL PROVISION
DESIGN AIR VOIDS	4.0% @ Ndes=70	4.0% @ Ndes=70	4.0% @ Ndes=30	4.0% @ Ndes=30
MIX COMPOSITION (Gradation)	IL 9.5	IL 9.5FG	IL 19.0L	IL 9.5L
FRICITION AGG	MIXTURE "C"	MIXTURE "C"		
QUALITY MGMT PROGRAM	QCP	QCP	QC/QA	QC/QA

PLAN QUANTITIES FOR HOT-MIX ASPHALT ITEMS ARE CALCULATED USING A UNIT WEIGHT OF 112 LB/SO YD/IN.

7. AN EMPTIED MTD WILL BE ALLOWED OVER ALL BRIDGES AND CULVERTS THROUGHOUT THE LENGTH OF THE PROJECT. THE EMPTIED MTD MUST BE TRANSPORTED ON A TRANSPORT VEHICLE. AXLE LOADS AND AXLE SPACING OF THE TRANSPORT VEHICLE MUST BE PROVIDED TO THE ENGINEER FOR REVIEW BY THE BUREAU OF BRIDGES AND STRUCTURES.
8. AN ESTIMATED QUANTITY OF 18 TONS OF CUTTINGS FROM THE HOT-MIX ASPHALT SURFACE REMOVAL OPERATION IS ANTICIPATED.
9. ALL TURF AREAS DISTURBED BY THE CONTRACTOR SHALL BE SEEDED WITH THE APPROPRIATE EROSION CONTROL, AS DIRECTED BY THE ENGINEER, AT THE CONTRACTOR'S EXPENSE.
10. THE REMOVAL OF THE EXISTING AGGREGATE SHOULDER REQUIRED FOR THE RESURFACING OF THE EXISTING HMA SHOULDER WILL BE INCLUDED IN THE COST OF THE HOT-MIX ASPHALT SHOULDERS.
11. THE ENGINEER SHALL NOTE BEGINNING AND END STATIONS FOR NO PASSING ZONES PRIOR TO MILLING.
12. THE QUANTITY OF 2643 TONS OF AGGREGATE WEDGE SHOULDER, TYPE B IS INCLUDED IN THE PLANS TO ELIMINATE THE SHOULDER DROP OFF, WHERE PRESENT. IN AREAS WHERE ADDITIONAL GRADING AND SHAPING BECOMES NECESSARY FOR FULL PLACEMENT, THE QUANTITY NEEDED SHALL BE REDUCED. MATERIAL SHALL ONLY BE PLACED WHERE SPACE ALLOWS.
13. THE VARIOUS THICKNESS OF HMA SURFACE REMOVAL SHOWN ON THE PLANS ARE THE AVERAGE THICKNESSES BASED UPON CONTROLLING THICKNESS AS INDICATED. DEVIATIONS FROM THE NOMINAL THICKNESS WILL BE PERMITTED WHEN SUCH DEVIATIONS OCCUR DUE TO IRREGULARITIES IN THE EXISTING SURFACE. HMA SURFACE REMOVAL HAS BEEN INCLUDED IN THE PLANS FOR THE PURPOSE OF REMOVING IRREGULARITIES AND TO ESTABLISH CROSS SLOPE.

14. SHORT TERM PAVEMENT MARKING SHALL BE APPLIED TO MILLED, PRIME, LEVEL BINDER, AND FINAL SURFACE. ONLY REMOVAL FROM FINAL SURFACE PAID AS SHORT TERM PAVEMENT MARKING REMOVAL.
15. PAVEMENT MARKINGS SHALL MATCH EXISTING MARKINGS AS DIRECTED BY THE ENGINEER.
16. ALL REMOVED GUARDRAIL COMPONENTS ARE THE PROPERTY OF THE CONTRACTOR AND THE SALVAGE VALUE OF SAID COMPONENTS SHALL BE REFLECTED IN THE CONTRACTOR'S BID.

COMMITMENTS

NO TREE CLEARING FROM APRIL 1ST THROUGH
 SEPTEMBER 30TH OF ANY YEAR.

FILE NAME =	USER NAME = leej	DESIGNED - _____	REVISED - _____	STATE OF ILLINOIS DEPARTMENT OF TRANSPORTATION	INDEX OF SHEETS, HIGHWAY STANDARDS, GENERAL NOTES & COMMITMENTS	F.A.P. F.A.S. 310 733	SECTION (51-1,52-1,53,54,55)RS-4	COUNTY GREENE	TOTAL SHEETS 24	SHEET NO. 2
Default	PLOT SCALE = 100.0000' / in.	CHECKED - _____	REVISED - _____		SCALE: _____ SHEET 1 OF 1 SHEETS STA. _____ TO STA. _____					CONTRACT NO. 76K31
	PLOT DATE = 2/22/2018	DATE - _____	REVISED - _____							ILLINOIS FED. AID PROJECT

CODE NO.	ITEM	UNIT	TOTAL QUANTITY	CONSTRUCTION CODE				
				80% FED 20% STATE ROADWAY	80% FED 20% STATE ROADWAY	100% STATE BRIDGE	100% STATE BRIDGE	100% STATE BRIDGE
				0005 FAS 733	0005 FAP 310	0013 031-0029	0013 031-0030	0013 031-0031
20100500	TREE REMOVAL, ACRES	ACRE	0.02				0.02	
20800150	TRENCH BACKFILL	CU YD	95		95			
28100107	STONE RIPRAP, CLASS A4	SQ YD	3276		36		3240	
28200200	FILTER FABRIC	SQ YD	3168		36		3132	
40201000	AGGREGATE FOR TEMPORARY ACCESS	TON	38	5	33			
40600290	BITUMINOUS MATERIALS (TACK COAT)	POUND	67193	14007	53186			
40600637	LEVELING BINDER (MACHINE METHOD), IL-9.5FG, N70	TON	3457	713	2744			
40600990	TEMPORARY RAMP	SQ YD	158	60	98			
40603315	HOT-MIX ASPHALT SURFACE COURSE, MIX "C", N70	TON	6914	1426	5488			
44000158	HOT-MIX ASPHALT SURFACE REMOVAL, 2 1/4"	SQ YD	108174	22637	85537			
44000400	GUTTER REMOVAL	FOOT	512		512			
44200144	PAVEMENT PATCHING, TYPE II, 12 INCH	SQ YD	14	14				
44200192	PAVEMENT PATCHING, TYPE II, 16 INCH	SQ YD	6		6			
44200198	PAVEMENT PATCHING, TYPE IV, 16 INCH	SQ YD	267		267			

14

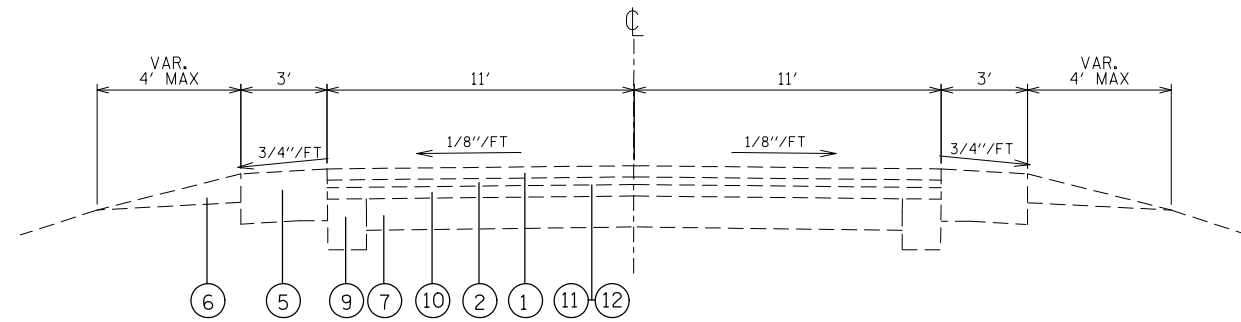
CODE NO.	ITEM	UNIT	TOTAL QUANTITY	CONSTRUCTION CODE								
				80% FED 20% STATE ROADWAY 0005 FAS 733	80% FED 20% STATE ROADWAY 0005 FAP 310	100% STATE BRIDGE 0013 031-0029	100% STATE BRIDGE 0013 031-0030	100% STATE BRIDGE 0013 031-0031				
				44300200	STRIP REFLECTIVE CRACK CONTROL TREATMENT	FOOT	20820		20820			
				48102100	AGGREGATE WEDGE SHOULDER, TYPE B	TON	1326	268	1058			
48203100	HOT-MIX ASPHALT SHOULDERS	TON	3263	713	2550							
50102400	CONCRETE REMOVAL	CU YD	0.8				0.8					
50105220	PIPE CULVERT REMOVAL	FOOT	516		516							
50300225	CONCRETE STRUCTURES	CU YD	3.9			1.3	1.5	1.1				
50800205	REINFORCEMENT BARS, EPOXY COATED	POUND	600			220	190	190				
542A0223	PIPE CULVERTS, CLASS A, TYPE 1 18"	FOOT	512		512							
542A0229	PIPE CULVERTS, CLASS A, TYPE 1 24"	FOOT	5		5							
54213669	PRECAST REINFORCED CONCRETE FLARED END SECTIONS 24"	EACH	1		1							
54248510	CONCRETE COLLAR	CU YD	0.2		0.2							
60218400	MANHOLES, TYPE A, 4'-DIAMETER, TYPE 1 FRAME, CLOSED LID	EACH	1		1							
60240395	INLETS, TYPE B	EACH	1		1							
60600605	CONCRETE CURB, TYPE B	FOOT	150			50	50	50				

FILE NAME =	USER NAME = leej	DESIGNED -	REVISED -	STATE OF ILLINOIS DEPARTMENT OF TRANSPORTATION	SUMMARY OF QUANTITIES				F.A.P. F.A.S.	SECTION	COUNTY	TOTAL SHEETS	SHEET NO.
pw\11884EBID\INTEG\Illinois.gov\PWIDOT\Documents\DOT Offices\Dist\ot 8\Projects\0876\DRAWING\DATA\Sheet\0876K31-ht-908.dwg	DESIGNED -	REVISED -	310						(51-1,52-1,53,54,55)RS-4	GREENE	24	4	
Default	PLOT SCALE = 1/8" = 1' / in.	CHECKED -	REVISED -		SCALE:	SHEET 2	OF 4	SHEETS STA.	TO STA.	CONTRACT NO. 76K31			
	PLOT DATE = 1/29/2018	DATE -	REVISED -		ILLINOIS FED. AID PROJECT								

CODE NO.	ITEM	UNIT	TOTAL QUANTITY	CONSTRUCTION CODE				
				80% FED 20% STATE ROADWAY 0005 FAS 733	80% FED 20% STATE ROADWAY 0005 FAP 310	100% STATE BRIDGE 0013 031-0029	100% STATE BRIDGE 0013 031-0030	100% STATE BRIDGE 0013 031-0031
60602500	CONCRETE GUTTER, TYPE A	FOOT	512		512			
* 63000003	STEEL PLATE BEAM GUARDRAIL, TYPE A, 9 FOOT POSTS	FOOT	375			125	125	125
* 63100085	TRAFFIC BARRIER TERMINAL, TYPE 6	EACH	12			4	4	4
* 63100167	TRAFFIC BARRIER TERMINAL, TYPE 1 (SPECIAL) TANGENT	EACH	12			4	4	4
63200310	GUARDRAIL REMOVAL	FOOT	1190			390	400	400
64200108	SHOULDER RUMBLE STRIPS, 8 INCH	FOOT	63451	12734	50717			
67000400	ENGINEER'S FIELD OFFICE, TYPE A	CAL MO	6	1	5			
67100100	MOBILIZATION	LSUM	1	0.2	0.8			
70100450	TRAFFIC CONTROL AND PROTECTION, STANDARD 701201	LSUM	1		0.2	0.2	0.4	0.2
70100460	TRAFFIC CONTROL AND PROTECTION, STANDARD 701306	LSUM	1	0.2	0.8			
70100600	TRAFFIC CONTROL AND PROTECTION, STANDARD 701336	LSUM	1	0.2	0.8			
70300100	SHORT TERM PAVEMENT MARKING	FOOT	11537	2328	9209			
70300150	SHORT TERM PAVEMENT MARKING REMOVAL	SQ FT	962	194	768			
70300220	TEMPORARY PAVEMENT MARKING - LINE 4"	FOOT	85535	17384	68151			
* 72501000	TERMINAL MARKER - DIRECT APPLIED	EACH	12			4	4	4

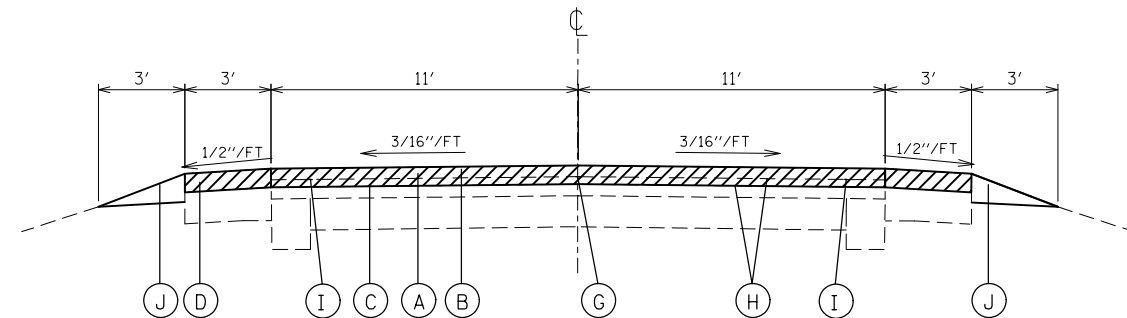
* SPECIALTY ITEM

FILE NAME =	USER NAME = leej	DESIGNED -	REVISED -	STATE OF ILLINOIS DEPARTMENT OF TRANSPORTATION	SUMMARY OF QUANTITIES				F.A.P.	SECTION	COUNTY	TOTAL	SHEET
pw\IL084EBIDINTEG\Illinois.gov\PWIDOT\Documents\DOT Office\District 8\Projects\0876\Drawings\0876K31-shr-500.dgn	PLOT SCALE = 1/8" = 1'-0"	CHECKED -	REVISED -						310	(S1-1,52-1,53,54,55)RS-4	GREENE	24	5
Default	PLOT DATE = 1/29/2018	DATE -	REVISED -		733	CONTRACT NO. 76K31							
					SCALE:	SHEET 3	OF 4	SHEETS	STA.	TO STA.	ILLINOIS FED. AID PROJECT		



EXISTING TYPICAL SECTION

STA 632+18.60 TO STA 722+01.54
 STA 727+13.35 TO STA 736+28.59



PROPOSED TYPICAL SECTION

STA 632+18.60 TO STA 722+01.54
 STA 727+13.35 TO STA 736+28.59

LEGEND

- ① EXISTING HMA SURFACE COURSE, 1 1/2"
- ② EXISTING LEVEL BINDER, 3/4"
- ③ EXISTING TYPE A GUTTER
- ④ EXISTING STABILIZED SUB BASE (BAM), 4"
- ⑤ EXISTING BITUMINOUS SHOULDER, 8"
- ⑥ EXISTING AGGREGATE WEDGE SHOULDER
- ⑦ EXISTING PCC PAVEMENT, 7"
- ⑧ EXISTING PCC PAVEMENT, 9"
- ⑨ EXISTING PCC WIDENING, 8"
- ⑩ EXISTING RESURFACING, ± 5"
- ⑪ EXISTING BITUMINOUS MATERIAL (PRIME COAT)
- ⑫ EXISTING AGGREGATE (PRIME COAT)

- (A) PROPOSED HOT-MIX ASPHALT SURFACE REMOVAL, 2 1/4"
- (B) PROPOSED HOT-MIX ASPHALT SURFACE COURSE, MIX "C", N70, 1 1/2"
- (C) PROPOSED LEVELING BINDER (MACHINE METHOD), IL-9.5FG, N70, 3/4"
- (D) PROPOSED HOT-MIX ASPHALT SHOULDERS
- (E) PROPOSED GUTTER REMOVAL
- (F) PROPOSED CONCRETE GUTTER, TYPE A
- (G) PROPOSED LONGITUDINAL JOINT SEALANT
- (H) PROPOSED BITUMINOUS MATERIAL (TACK COAT)
- (I) PROPOSED STRIP REFLECTIVE CRACK CONTROL
- (J) PROPOSED AGGREGATE WEDGE SHOULDER, TYPE B

||||| GUTTER REMOVAL

////// HMA SURFACE REMOVAL

FILE NAME =	USER NAME = leej	DESIGNED -	REVISED -
pw:\IL\084EBIDINTEG.illinois.gov\PIDOT\Documents\IDOT Offices\District 8\Projects\0876\Drawings\AD\Sheets\0876K31-sh-typical.dwg		CHECKED -	REVISED -
Default	PLOT SCALE = 100.0000' / 1in.	DATE -	REVISED -
	PLOT DATE = 1/29/2018		

**STATE OF ILLINOIS
 DEPARTMENT OF TRANSPORTATION**

TYPICAL SECTIONS

SCALE: SHEET 2 OF 3 SHEETS STA. TO STA.

F.A.P. F.A.S.	SECTION	COUNTY	TOTAL SHEETS	SHEET NO.
310 733	(51-1,52-1,53,54,55)RS-4	GREENE	24	8
CONTRACT NO. 76K31			ILLINOIS FED. AID PROJECT	

RESURFACING SCHEDULE								
LOCATION			BITUMINOUS MATERIALS (TACK COAT)	LEVELING BINDER (MACHINE METHOD), IL-9.5FG, N70, 3/4"	HOT-MIX ASPHALT SURFACE COURSE, MIX "C", N70, 1 1/2"	HOT-MIX ASPHALT SURFACE REMOVAL, 2 1/4"	STRIP REFLECTIVE CRACK CONTROL TREATMENT	LONGITUDINAL JOINT SEALANT
STATION		STATION	LBS	TONS	TONS	SQ YD	FOOT	FOOT
407+86.99	TO	413+39.25	1215	62	124	1964		552
414+87.83	TO	576+38.50	35532	1809	3618	57425		16151
577+90.02	TO	588+48.52	2329	119	238	3764		1059
596+65.43	TO	632+18.60	7817	398	796	12634		3553
632+18.60	TO	736+28.59	20300	1069	2138	32387	20820	10410
TOTAL			67193	3457	6914	108174	20820	31725

SHOULDER SCHEDULE					
LOCATION			HOT-MIX ASPHALT SHOULDERS	SHOULDER RUMBLE STRIPS, 8 INCH	AGGREGATE WEDGE SHOULDER, TYPE B
STATION		STATION	TON	FEET	TON
407+86.99	TO	413+39.25	62	1105	24
414+87.83	TO	576+38.50	1809	32302	679
577+90.02	TO	588+48.52	119	2117	45
596+65.43	TO	632+18.60	398	7107	150
632+18.60	TO	736+28.59	875	20820	428
TOTAL			3263	63451	1326

AGGREGATE FOR TEMPORARY ACCESS SCHEDULE			
LOCATION	LENGTH FEET	WIDTH FEET	TON
CORSA LANE	87.0	1.5	2.4
1225 E	93.0	1.5	2.6
1950 N	83.0	1.5	2.3
1850 N	90.0	1.5	2.5
1850 N	90.0	1.5	2.5
1850 N/1130 E	83.0	1.5	2.3
1851 N/1130 E	87.0	1.5	2.4
1700 N (BERDAN)	179.0	1.5	5.0
1650 N	48.0	1.5	1.3
1650 N	34.0	1.5	1.0
1600 N	48.0	1.5	1.3
PRIVATE ENTRANCES			11.2
TOTAL			38

TEMPORARY RAMP SCHEDULE				
LANE DIRECTION	LOCATION	LENGTH FEET	WIDTH FEET	AREA SQ YD
NB	407+86.99	7.5	12	10
NB	413+39.25	7.5	12	10
NB	414+87.83	7.5	12	10
NB	576+38.50	7.5	12	10
NB	577+90.02	7.5	12	10
NB	588+48.52	7.5	12	10
NB	596+65.43	7.5	12	10
NB	736+28.59	7.5	11	9
SB	221+90.40	7.5	12	10
SB	381+88.80	7.5	12	10
SB	383+79.90	7.5	12	10
SB	461+08.80	7.5	12	10
SB	466+35.80	7.5	12	10
SB	606+99.23	7.5	12	10
SB	608+56.77	7.5	12	10
SB	648+00.00	7.5	11	9
TOTAL				158

APPROACH SLAB REPAIR (FULL DEPTH) SCHEDULE			
STATION		STATION	AREA SQ YD
575+38.50	TO	576+38.50	267
577+90.02	TO	578+90.02	267
TOTAL			534

GUARDRAIL SCHEDULE											
LOCATION			LENGTH	STEEL PLATE BEAM GUARDRAIL, TYPE A, 9 FOOT POSTS	CONCRETE CURB, TYPE B	TRAFFIC BARRIER TERMINAL, TYPE 6	TRAFFIC BARRIER TERMINAL, TYPE 1 (SPECIAL) TANGENT	GUARDRAIL REMOVAL	TERMINAL MARKER - DIRECT APPLIED	GUARDRAIL REFLECTORS, TYPE A	
LANE DIRECTION	STATION	TO	STATION	FOOT	FOOT	FOOT	EACH	EACH	FOOT	EACH	
NB	412+29.25	TO	413+29.25	100	12.5	12.5	1	1	90	1	4
SB	412+29.25	TO	413+29.25	100	50.0	12.5	1	1	100	1	4
NB	414+97.83	TO	415+87.83	90	50.0	12.5	1	1	100	1	4
SB	414+97.83	TO	415+97.83	100	12.5	12.5	1	1	100	1	4
NB	575+28.50	TO	576+28.50	100	12.5	12.5	1	1	100	1	4
SB	575+28.50	TO	576+28.50	100	50.0	12.5	1	1	100	1	4
NB	578+00.02	TO	579+00.02	100	50.0	12.5	1	1	100	1	4
SB	578+00.02	TO	579+00.02	100	12.5	12.5	1	1	100	1	4
NB	587+38.52	TO	588+38.52	100	12.5	12.5	1	1	100	1	4
SB	587+38.52	TO	588+38.52	100	50.0	12.5	1	1	100	1	4
NB	596+75.43	TO	597+75.43	100	50.0	12.5	1	1	100	1	4
SB	596+75.43	TO	597+75.43	100	12.5	12.5	1	1	100	1	4
TOTAL					375	150	12	12	1190	12	48

DRAINAGE SCHEDULE											
LOCATION	TRENCH BACKFILL	STONE RIPRAP, CLASS A4	FILTER FABRIC	TREE REMOVAL, ACRES	PIPE CULVERT REMOVAL	PIPE CULVERTS, CLASS A, TYPE 1 18"	PIPE CULVERTS, CLASS A, TYPE 1 24"	PRECAST REINFORCED CONCRETE FLARED END SECTIONS 24"	CONCRETE COLLAR	GUTTER REMOVAL	CONCRETE GUTTER, TYPE A
	CU YD	SQ YD	SQ YD	ACRE	FOOT	FOOT	FOOT	EACH	CU YD	FOOT	FOOT
STA. 693+20.87							5	1	0.2		
STA. 720+44.59		25	25		4						
STA. 725+72.59	95	10	11		512	512				512	512
SN 031-0030		3240	3132	0.02							
TOTAL	95	3276	3168	0.02	516	512	5	1	0.2	512	512

DRAINAGE SCHEDULE			
LOCATION	MANHOLES, TYPE A, 4'-DIAMETER, TYPE 1 FRAME, CLOSED LID	INLETS, TYPE B	MANHOLE REMOVAL
	EACH	EACH	EACH
STA. 693+20.87			
STA. 720+44.59			
STA. 725+72.59	1	1	1
SN 031-0030			
TOTAL	1	1	1

PATCHING SCHEDULE						
STATION	LANE DIRECTION	LENGTH FEET	WIDTH FEET	TYPE		
				TY-II, 12 INCH SQ YDS	TY-II, 16 INCH SQ YDS	TY-IV, 16 INCH SQ YDS
407+56.99	NB	4	15	6.7		
407+56.99	SB	4	15	6.7		
609+56.59	SB	4	12		5.3	
662+36.59	SB	600	4			266.7
TOTAL				14	6	267

PAVEMENT MARKING SCHEDULE

STATION			TEMPORARY PAVEMENT MARKING - LINE 4"			THERMOPLASTIC PAVEMENT MARKING - LINE 4"			POLYUREA PAVEMENT MARKING TYPE I - LINE 4"	TEMPORARY PAVEMENT MARKING REMOVAL		
STATION		STATION	SOLID WHITE FEET	SKIP-DASH YELLOW FEET	SOLID YELLOW FEET	SOLID WHITE FEET	SKIP-DASH YELLOW FEET	SOLID YELLOW FEET	SKIP-DASH YELLOW FEET	SOLID WHITE SQ FT	SKIP-DASH YELLOW SQ FT	SOLID YELLOW SQ FT
407+86.99	TO	413+39.25	1105	138	552	1105	138	552		368	46	184
413+39.25	TO	414+87.83							34			
414+87.83	TO	417+23.09	471	59		471	59			157	20	
417+23.09	TO	427+96.35	2147	268	1073	2147	268	1073		716	89	358
427+96.35	TO	429+15.78	239		239	239		239		80		80
429+15.78	TO	440+60.03	2289	286	1144	2289	286	1144		763	95	381
440+60.03	TO	549+89.63	21859	2732		21859	2732			7286	911	
549+89.63	TO	560+70.84	2162	270	1081	2162	270	1081		721	90	360
560+70.84	TO	561+93.45	245		245	245		245		82		82
561+93.45	TO	572+82.58	2178	272	1089	2178	272	1089		726	91	363
572+82.58	TO	576+38.50	712	89		712	89			237	30	
576+38.50	TO	577+90.02							35			
577+90.02	TO	588+48.52	2117	265		2117	265			706	88	
588+48.52	TO	596+65.43							186			
596+65.43	TO	630+19.14	6707	838		6707	838			2236	279	
630+19.14	TO	638+57.60	1677	210	838	1677	210	838		559	70	279
638+57.60	TO	642+52.22	789	99		789	99			263	33	
642+52.22	TO	649+52.22	1400	175	700	1400	175	700		467	58	233
649+52.22	TO	649+96.22	88	11		88	11			29	4	
649+96.22	TO	655+62.22	1132	142	566	1132	142	566		377	47	189
655+62.22	TO	660+93.87	1063	133		1063	133			354	44	
660+93.87	TO	666+52.15	1117	140	558	1117	140	558		372	47	186
666+52.15	TO	688+08.63	4313	539		4313	539			1438	180	
688+08.63	TO	699+06.55	2196	274	1098	2196	274	1098		732	91	366
699+06.55	TO	721+41.45	4470		4470	4470		4470		1490		1490
721+41.45	TO	732+60.85	2239	280	1119	2239	280	1119		746	93	373
732+60.85	TO	736+28.59	735	92		735	92			245	31	
SUB TOTALS			63449	7312	14774	63449	7312	14774		21150	2437	4925
TOTAL				85535		85535		85535	255		28512	

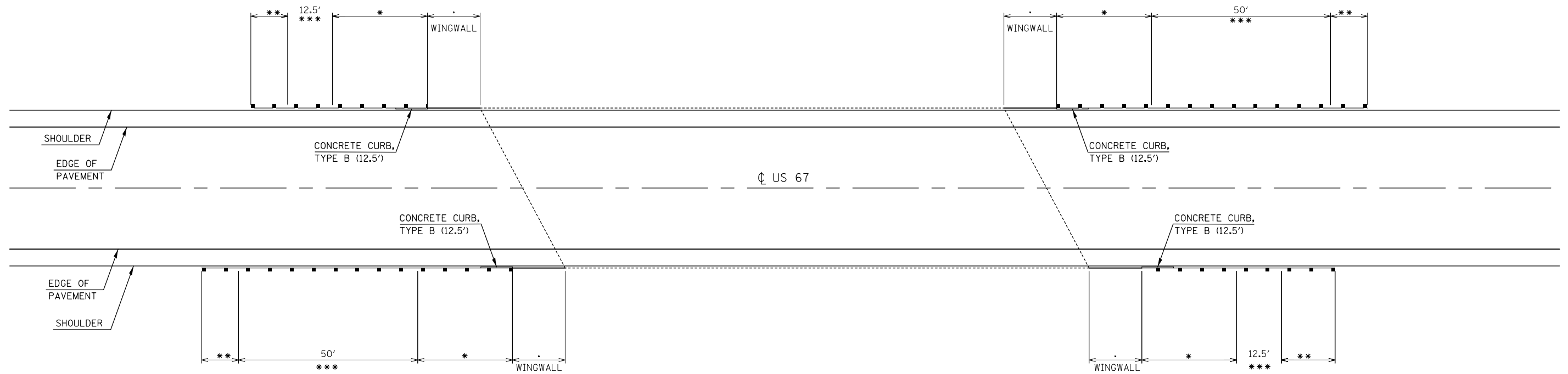
PAVEMENT MARKING SCHEDULE

STATION			SHORT TERM PAVEMENT MARKING	SHORT TERM PAVEMENT MARKING REMOVAL	RAISED REFLECTIVE PAVEMENT MARKER	RAISED REFLECTIVE PAVEMENT MARKER REMOVAL
STATION		STATION	FOOT	SQ FT	EACH	EACH
407+86.99	TO	413+39.25	201	17	7	7
413+39.25	TO	414+87.83			2	2
414+87.83	TO	576+38.50	5873	489	202	202
576+38.50	TO	577+90.02			2	2
577+90.02	TO	588+48.52	385	32	13	13
588+48.52	TO	596+65.43			10	10
596+65.43	TO	632+18.60	1292	108	44	44
632+18.60	TO	736+28.59	3785	315	130	130
TOTAL			11537	962	411	411

NOTES:

SEE MISCELLANEOUS DETAIL SHEETS FOR DETAILS ON WINGWALL MODIFICATIONS AT STRUCTURES LOCATION.

ALL EXISTING GUARDRAIL SHALL BE REMOVED, HOWEVER ONLY PROPOSED GUARDRAIL IS SHOWN. SEE GUARDRAIL SCHEDULE.



- * TRAFFIC BARRIER TERMINAL, TYPE 6
- ** TRAFFIC BARRIER TERMINAL, TYPE 1 (SPECIAL) TANGENT
- *** STEEL PLATE BEAM GUARDRAIL, TYPE A, 9 FOOT POSTS

APPLE CREEK
S.N. 031-0030

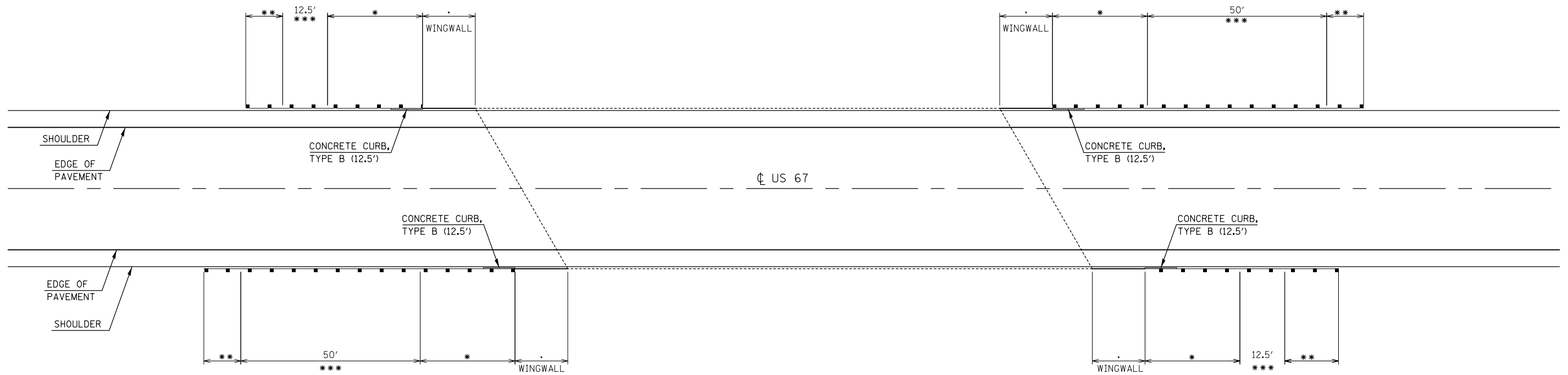
NOT TO SCALE

FILE NAME =	USER NAME = leej	DESIGNED -	REVISED -	STATE OF ILLINOIS DEPARTMENT OF TRANSPORTATION	GUARDRAIL LOCATION: SN 031-0030			F.A.P. F.A.S. 310 733	SECTION (51-1,52-1,53,54,55)RS-4	COUNTY GREENE	TOTAL SHEETS 24	SHEET NO. 14
pw:\IL\084EBIDINTEG\illinois.gov\PIDOT\Documents\DOT Offices\District 8\Projects\0876\Drawings\ADSheets\0876K31-shr-detail.dwg		CHECKED -	REVISED -		SCALE:	SHEET 2	OF 3	SHEETS	STA.	TO STA.	ILLINOIS FED. AID PROJECT	
Default	PLOT SCALE = 100.0000' / 1" =	DATE -	REVISED -									
	PLOT DATE = 1/29/2018											

NOTES:

SEE MISCELLANEOUS DETAIL SHEETS FOR DETAILS ON WINGWALL MODIFICATIONS AT STRUCTURES LOCATION.

ALL EXISTING GUARDRAIL SHALL BE REMOVED, HOWEVER ONLY PROPOSED GUARDRAIL IS SHOWN. SEE GUARDRAIL SCHEDULE.



- * TRAFFIC BARRIER TERMINAL, TYPE 6
- ** TRAFFIC BARRIER TERMINAL, TYPE 1 (SPECIAL) TANGENT
- *** STEEL PLATE BEAM GUARDRAIL, TYPE A, 9 FOOT POSTS

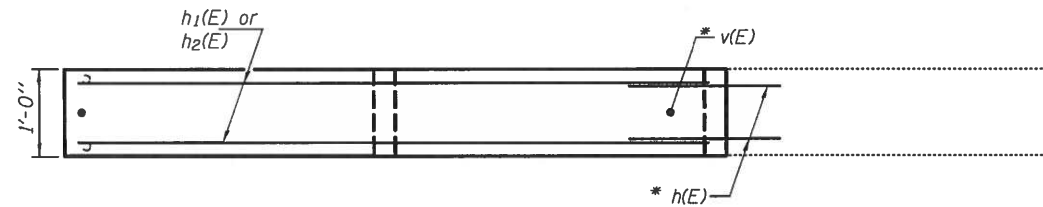
APPLE CREEK OVERFLOW
S.N. 031-0031

NOT TO SCALE

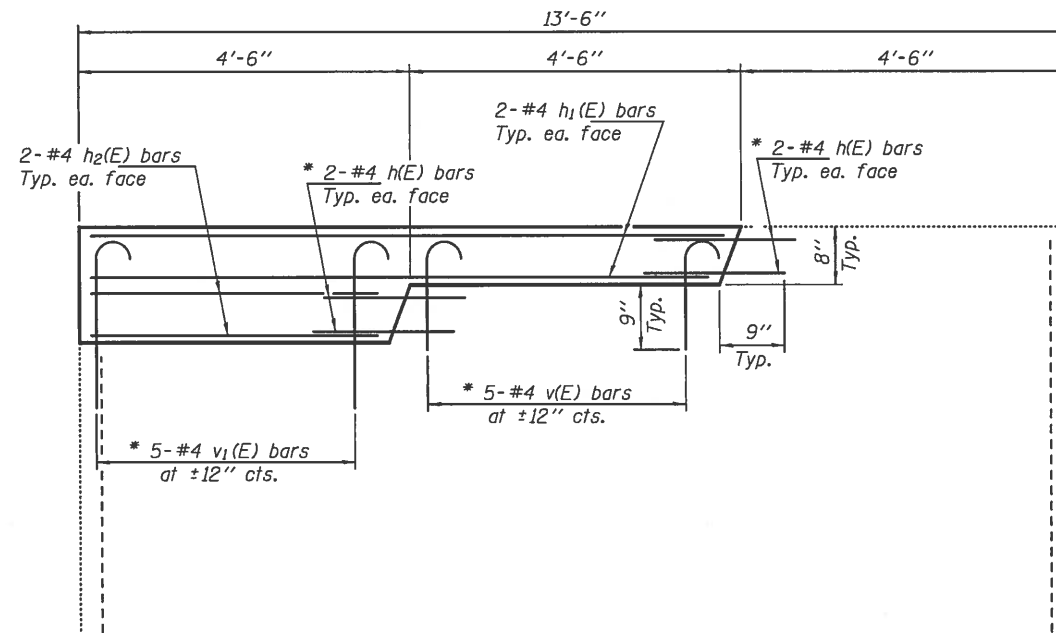
FILE NAME =	USER NAME = leej	DESIGNED -	REVISED -	STATE OF ILLINOIS DEPARTMENT OF TRANSPORTATION	GUARDRAIL LOCATION: SN 031-0031	F.A.P.	SECTION	COUNTY	TOTAL SHEETS	SHEET NO.	
pw:\IL084EBIDINTEG\illinois.gov\PIDOT\Documents\IDOT Offices\District 8\Projects\0876\Drawings\AD\Drawings\0876K31-shr-detail.dwg	PLotted	CHECKED -	REVISED -			310	(51-1,52-1,53,54,55)RS-4	GREENE	24	15	
Default	PLot SCALE = 100.0000' / in.	DATE -	REVISED -			SCALE: SHEET 3 OF 3 SHEETS STA. TO STA.		CONTRACT NO. 76K31			
	PLot DATE = 1/29/2018	DATE -	REVISED -			ILLINOIS FED. AID PROJECT					

NOTES

Reinforcement bars designated (E) shall be epoxy coated.
 Plan dimensions and details relative to existing plans are subject to nominal construction variations. The Contractor shall field verify existing dimensions and details affecting new construction and make necessary approved adjustments prior to construction or ordering of materials. Such variations shall not be cause for additional compensation for a change in scope of the work, however, the Contractor will be paid for the quantity actually furnished at the unit price bid for the work.

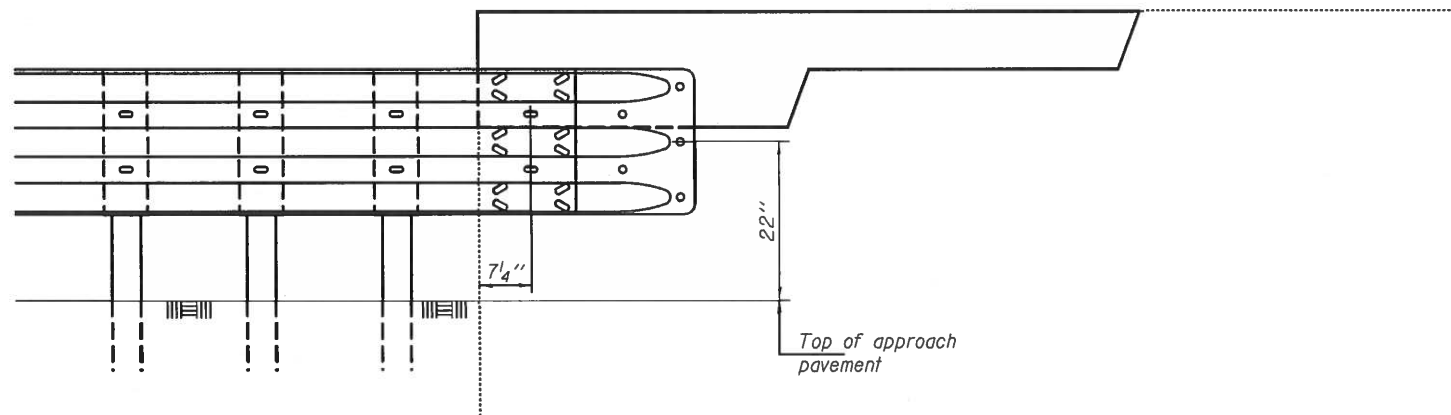


SECTION

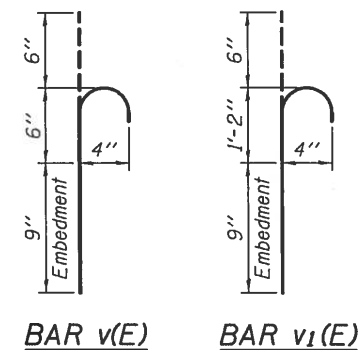


PROPOSED ELEVATION

* Epoxy grout h(E), v(E) & v₁(E) bars in 9" min. holes according to Article 584 of the Standard Specifications. Cost included with Reinforcement Bars, Epoxy Coated.



GUARDRAIL LOCATION



**BILL OF MATERIAL
4 WINGWALLS**

Bar	No.	Size	Length	Shape
h(E)	32	#4	1'-9"	—
h ₁ (E)	16	#4	8'-6"	—
h ₂ (E)	16	#4	4'-0"	—
v(E)	20	#4	1'-3"	⌋
v ₁ (E)	20	#4	2'-5"	⌋
Concrete Structures			Cu. Yd.	1.3
Reinforcement Bars, Epoxy Coated			Pound	220

DRAFT

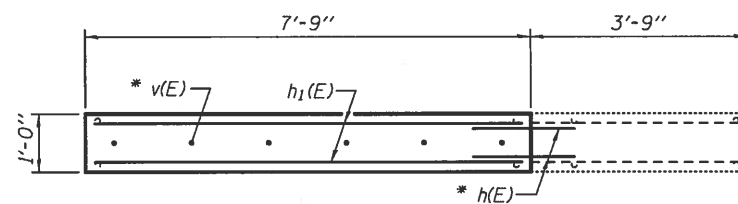
DATE: 5/17/2017

EXPIRES 11-30-2018

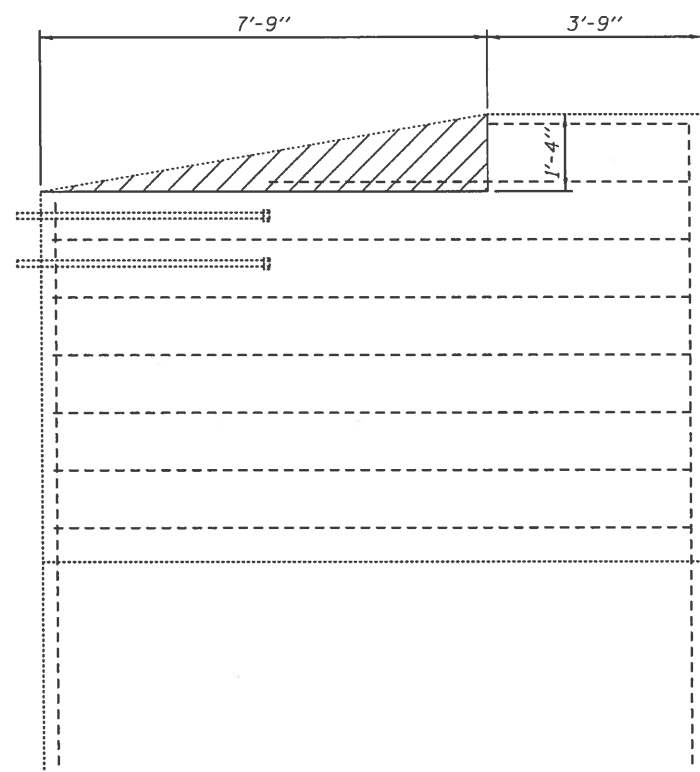
DESIGNED	DATE - MAY 17, 2017	STATE OF ILLINOIS DEPARTMENT OF TRANSPORTATION	WINGWALL MODIFICATION US 67 OVER SEMINARY CREEK SN 031-0029		SECTION (51-1,52-1,53,54,55)RS-4	COUNTY GREENE	TOTAL SHEETS 24	SHEET NO. 16	
CHECKED	REVISOR		SHEET NO. 1 OF 3 SHEETS						CONTRACT NO. 76K31
DRAWN <i>baliva</i>	REVISOR		ILLINOIS FED. AID PROJECT						
CHECKED	ENGINEER OF BRIDGES AND STRUCTURES								

NOTES

Reinforcement bars designated (E) shall be epoxy coated.
 Plan dimensions and details relative to existing plans are subject to nominal construction variations. The Contractor shall field verify existing dimensions and details affecting new construction and make necessary approved adjustments prior to construction or ordering of materials. Such variations shall not be cause for additional compensation for a change in scope of the work, however, the Contractor will be paid for the quantity actually furnished at the unit price bid for the work.

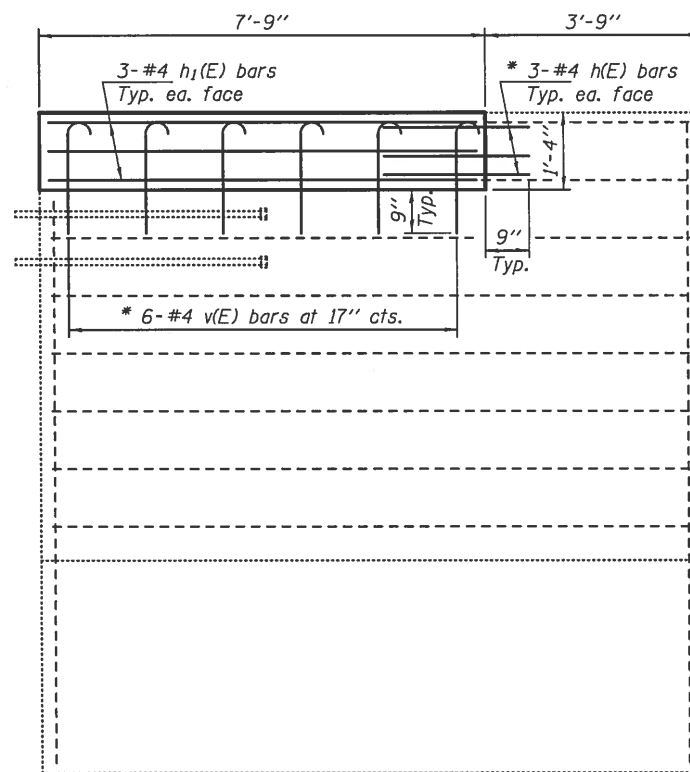


SECTION



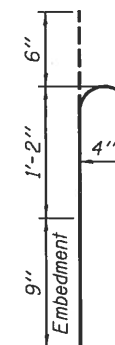
EXISTING ELEVATION

Hatched area indicates
Concrete Removal.

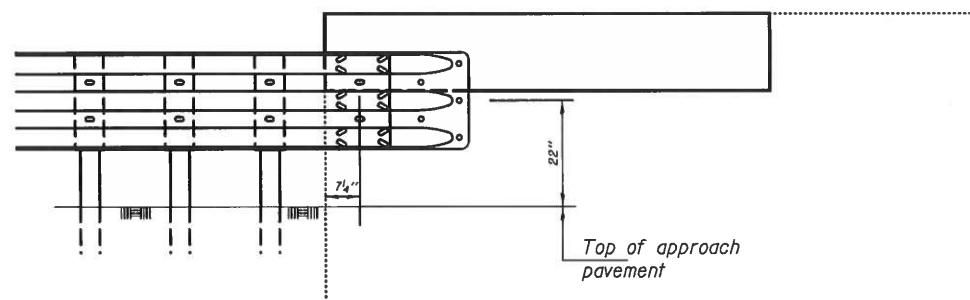


PROPOSED ELEVATION

* Epoxy grout h(E) & v(E) bars in 9" min. holes according to Article 584 of the Standard Specifications.



BAR v(E)



GUARDRAIL LOCATION

**BILL OF MATERIAL
4 WINGWALLS**

Bar	No.	Size	Length	Shape
h(E)	24	#4	1'-9"	—
h1(E)	24	#4	7'-5"	—
v(E)	24	#4	2'-5"	⌒
Concrete Removal			Cu. Yd.	0.8
Concrete Structures			Cu. Yd.	1.5
Reinforcement Bars, Epoxy Coated			Pound	190

DRAFT

DATE: 5/17/2017

EXPIRES 11-30-2018

DESIGNED	DATE - MAY 17, 2017
CHECKED	
DRAWN <i>baliva</i>	PASSED
CHECKED	ENGINEER OF BRIDGES AND STRUCTURES

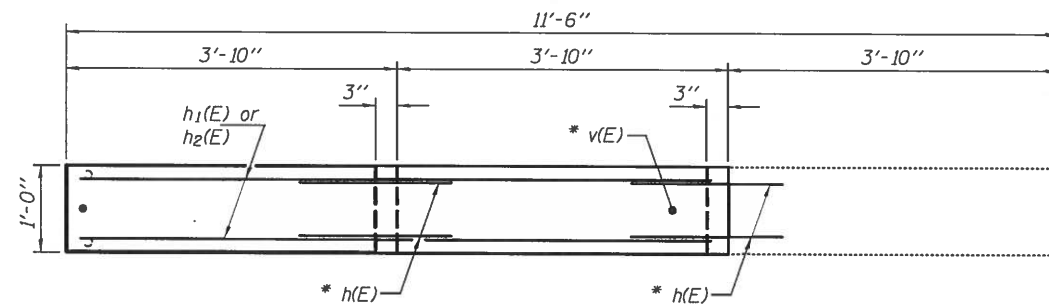
**STATE OF ILLINOIS
DEPARTMENT OF TRANSPORTATION**

**WINGWALL MODIFICATION
US 67 OVER APPLE CREEK
SN 031-0030**

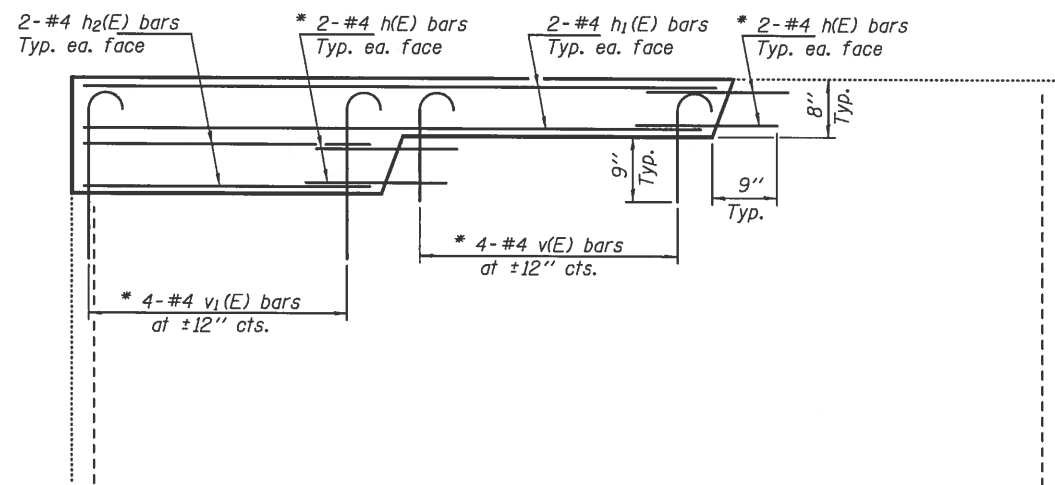
SHEET NO. 2 OF 3 SHEETS

SECTION	COUNTY	TOTAL SHEETS	SHEET NO.
(51-1,52-1,53,54,55)RS-4	GREENE	24	17
CONTRACT NO.		76K31	

ILLINOIS FED. AID PROJECT

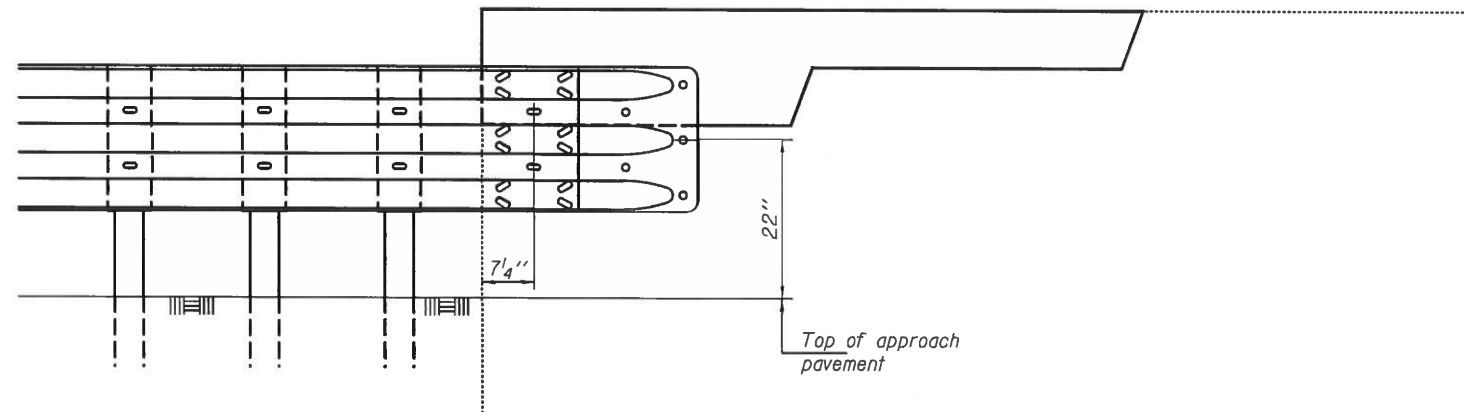


SECTION



PROPOSED ELEVATION

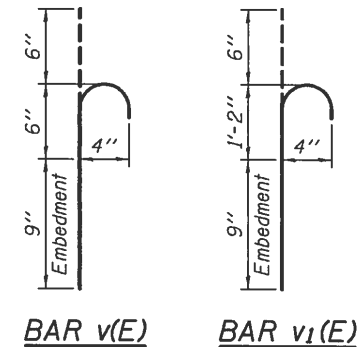
* Epoxy grout h(E), v(E) & v1(E) bars in 9" min. holes according to Article 584 of the Standard Specifications. Cost included with Reinforcement Bars, Epoxy Coated.



GUARDRAIL LOCATION

NOTES

Reinforcement bars designated (E) shall be epoxy coated.
 Plan dimensions and details relative to existing plans are subject to nominal construction variations. The Contractor shall field verify existing dimensions and details affecting new construction and make necessary approved adjustments prior to construction or ordering of materials. Such variations shall not be cause for additional compensation for a change in scope of the work, however, the Contractor will be paid for the quantity actually furnished at the unit price bid for the work.



BAR v(E) **BAR v1(E)**

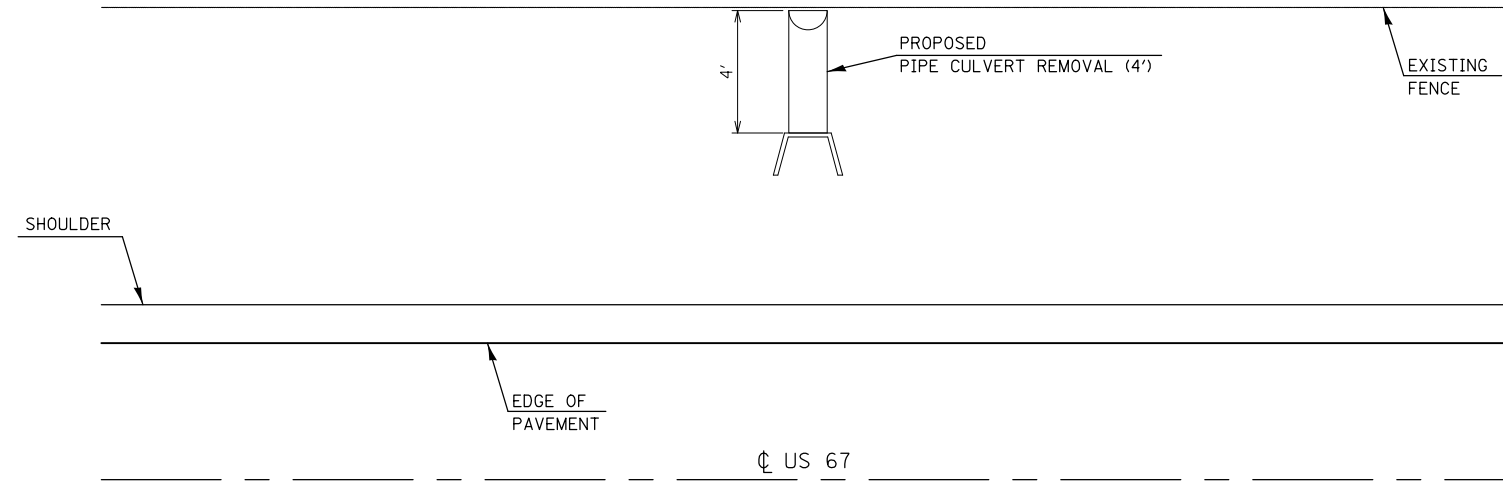
**BILL OF MATERIAL
4 WINGWALLS**

Bar	No.	Size	Length	Shape
h(E)	32	#4	1'-9"	—
h1(E)	16	#4	7'-1"	—
h2(E)	16	#4	3'-3"	—
v(E)	16	#4	1'-3"	⌋
v1(E)	16	#4	2'-5"	⌋
Concrete Structures			Cu. Yd.	1.1
Reinforcement Bars, Epoxy Coated			Pound	190

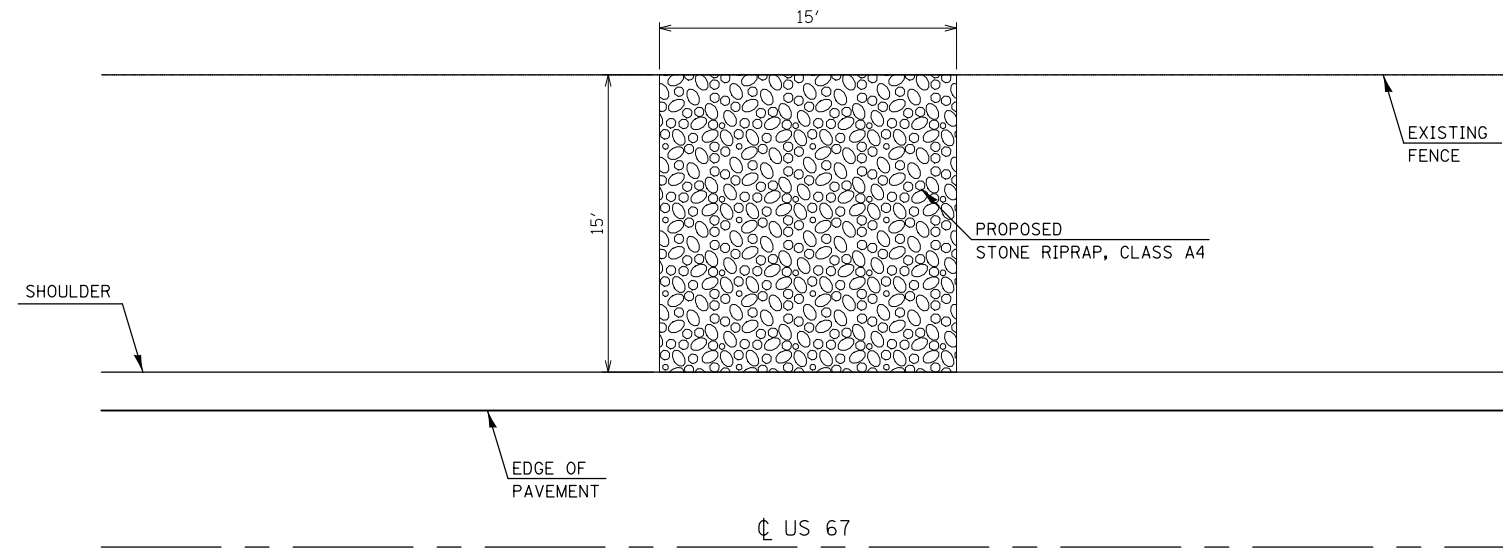
DRAFT
DATE: 5/17/2017

EXPIRES 11-30-2018

DESIGNED	DATE - MAY 17, 2017	STATE OF ILLINOIS DEPARTMENT OF TRANSPORTATION	WINGWALL MODIFICATION FAP 310 (IL 267) OVER APPLE CREEK OVERFLOW SN 031-0031		F.A.P. 310 733	SECTION (51-1,52-1,53,54,55)RS-4	COUNTY GREENE	TOTAL SHEETS 24	SHEET NO. 18
CHECKED	REVISOR		SHEET NO. 3 OF 3 SHEETS		CONTRACT NO. 76K31				
DRAWN baliva	REVISOR		ILLINOIS FED. AID PROJECT						
CHECKED	ENGINEER OF BRIDGES AND STRUCTURES		ILLINOIS FED. AID PROJECT						



PIPE REMOVAL DETAILS



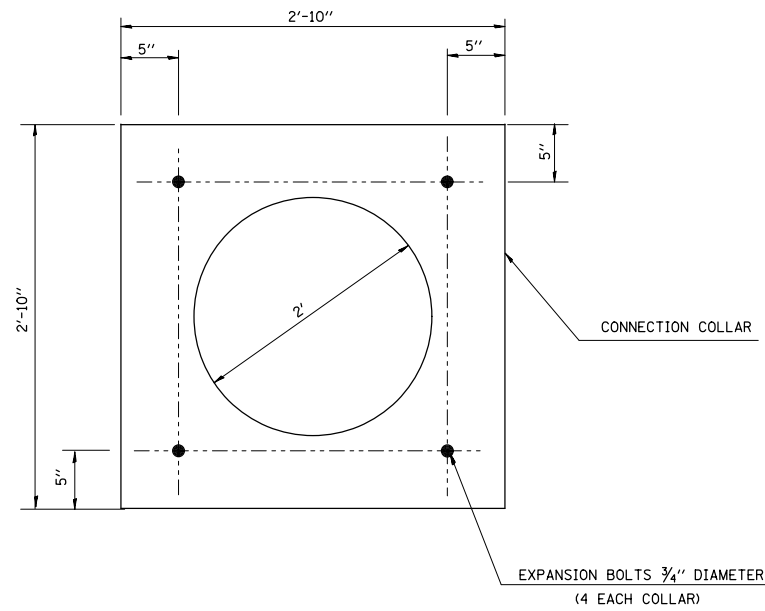
RIPRAP PLACEMENT DETAILS

STA. 720+44.59
NOT TO SCALE

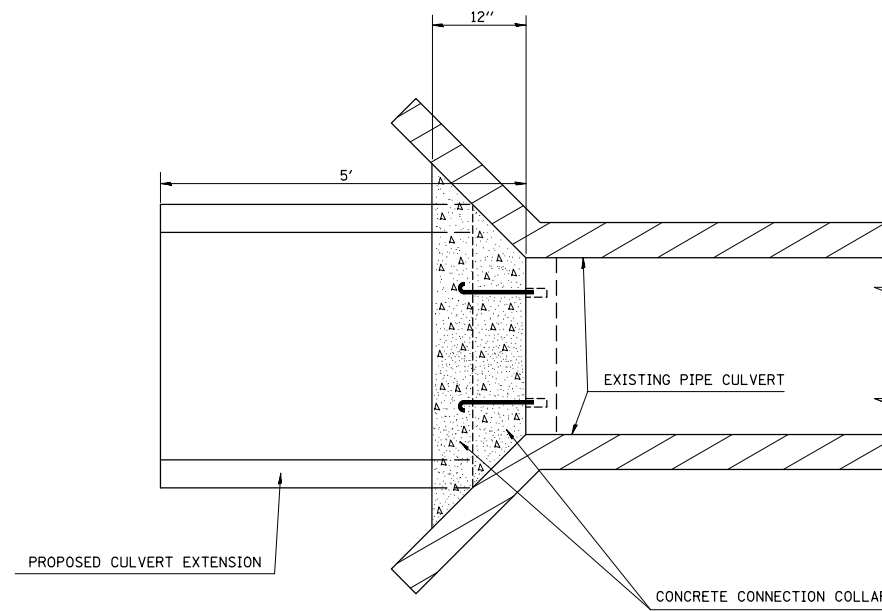
FILE NAME =	USER NAME = leej	DESIGNED -	REVISED -	STATE OF ILLINOIS DEPARTMENT OF TRANSPORTATION	DRAINAGE DETAILS (0.4 MI N OF CEMETERY ROAD)			F.A.P.	SECTION	COUNTY	TOTAL SHEETS	SHEET NO.
pw:\IL\084EBIDINTEG\illinois.gov\PWIDOT\Documents\IDOT Offices\District 8\Projects\0875\Drawings\ADSheets\0875-1-shr-detail.dwg	PLLOT SCALE = 100.0000' / 1in.	CHECKED -	REVISED -					310	(51-1,52-1,53,54,55)RS-4	GREENE	24	21
Default	PLLOT DATE = 1/29/2018	DATE -	REVISED -		SCALE:	SHEET 3	OF 4	SHEETS	STA.	TO STA.	CONTRACT NO. 76K31	
										ILLINOIS FED. AID PROJECT		

GENERAL NOTES

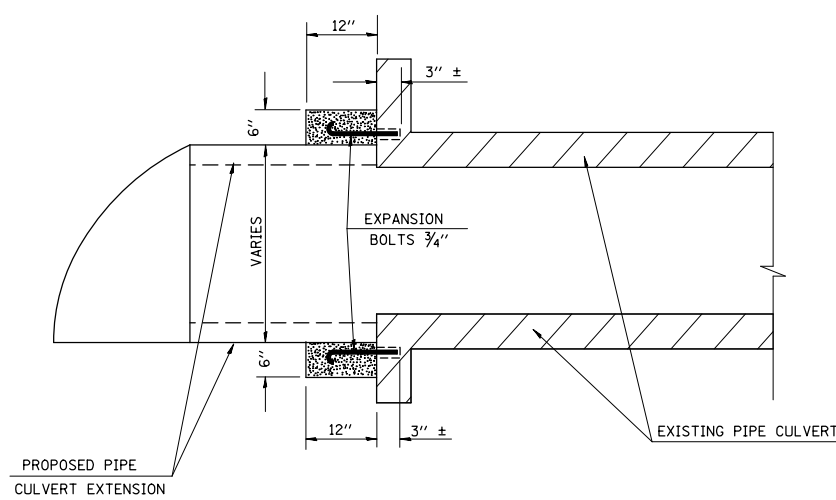
1. PIPE CULVERT EXTENSION TO BE CENTERED ON BOX CULVERT OPENING
2. THE CONNECTION COLLAR SHALL BE CLASS SI CONCRETE THROUGHOUT
3. UNSUITABLE MATERIAL SHALL BE DISPOSED OF AS PER THE STANDARD SPECIFICATIONS
4. EXPANSION BOLTS SHALL CONSIST OF SELF-DRILLING EXPANSION SHIELDS AND 3/4" DIAMETER HOOKED BOLTS. HOOKED BOLTS SHALL EXTEND A MINIMUM OF 9" INTO NEW CONCRETE. 4 - 3/4" X 12" HOOKED BOLTS ARE REQUIRED FOR EACH CONNECTION COLLAR. EXPANSION BOLTS SHALL BE INCLUDED IN THE COST OF THE CONCRETE COLLAR.



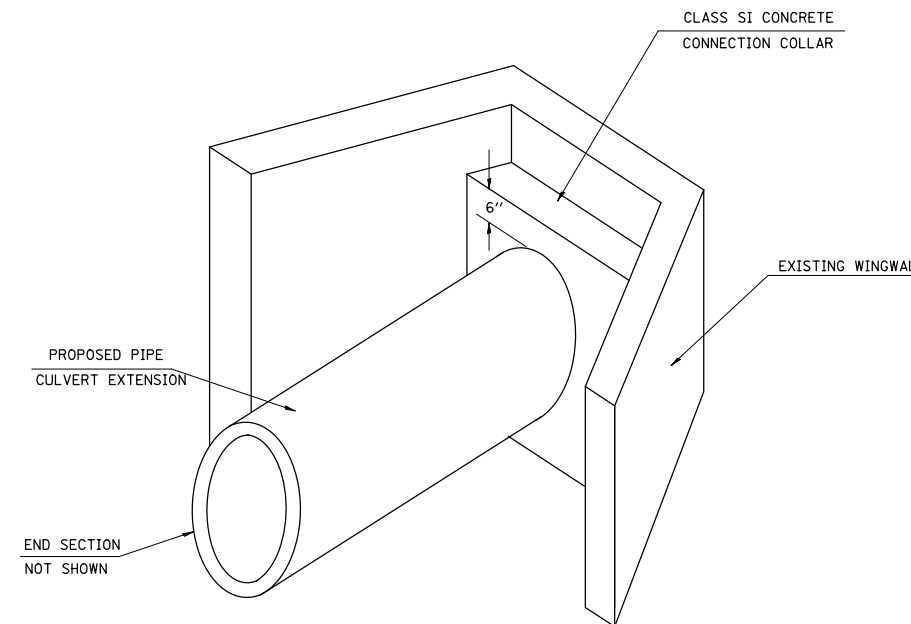
EXPANSION BOLT LAYOUT
NOT TO SCALE



PLAN VIEW
NOT TO SCALE



EXPANSION BOLT AND CONNECTION COLLAR DETAILS
NOT TO SCALE



PIPE CULVERT EXTENSION SKETCH
NOT TO SCALE

STA. 693+20.87
NOT TO SCALE

FILE NAME =	USER NAME = leej	DESIGNED -	REVISED -
p:\11\084EBID\INTEG\illinois.gov\PIWID\Documents\DOT Offices\District 8\Projects\0876\Drawings\AD\Sheets\0876K31-shr-detail.dwg		DRAWN -	REVISED -
Default	PLOT SCALE = 100.0000' / 1in.	CHECKED -	REVISED -
	PLOT DATE = 1/29/2018	DATE -	REVISED -

**STATE OF ILLINOIS
DEPARTMENT OF TRANSPORTATION**

DRAINAGE DETAILS

SCALE: SHEET 4 OF 4 SHEETS STA. TO STA.

F.A.P. F.A.S.	SECTION	COUNTY	TOTAL SHEETS	SHEET NO.
310 733	(51-1,52-1,53,54,55)RS-4	GREENE	24	22
CONTRACT NO. 76K31				
ILLINOIS FED. AID PROJECT				

