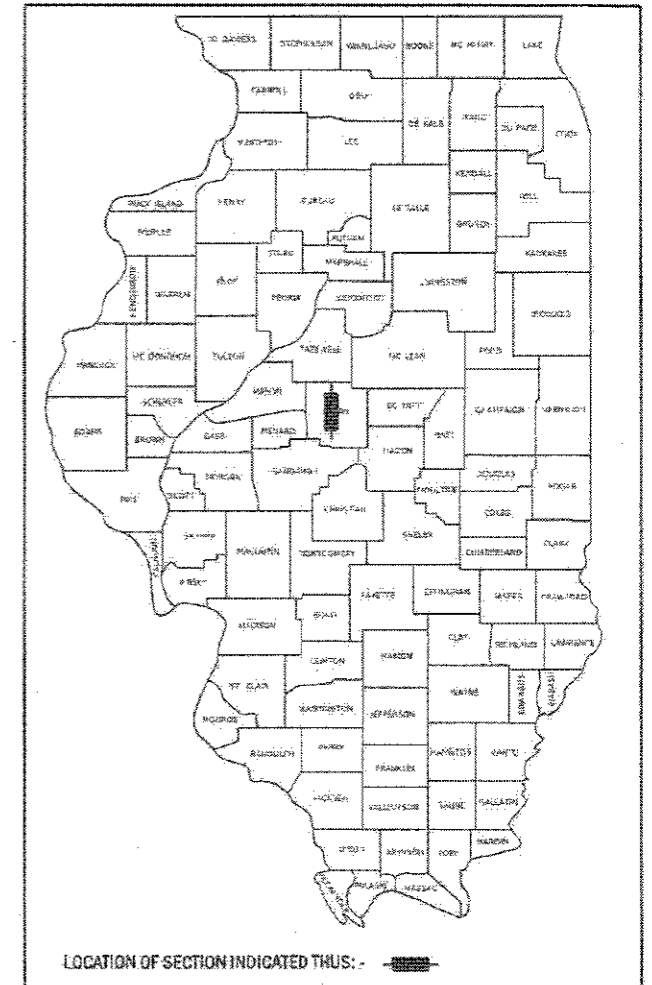


04-27-2018 LETTING ITEM 123

STATE OF ILLINOIS
DEPARTMENT OF TRANSPORTATION

F.A.T. RTE.	SECTION	COUNTY	TOTAL SHEETS	SHEET NO.
55	(54-4) BP	LOGAN	14	1
		BUNDLES	CONTRACT NO. 72K49	

D-96-034-18



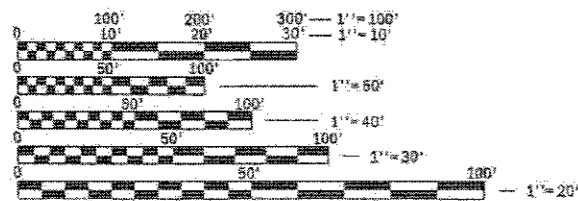
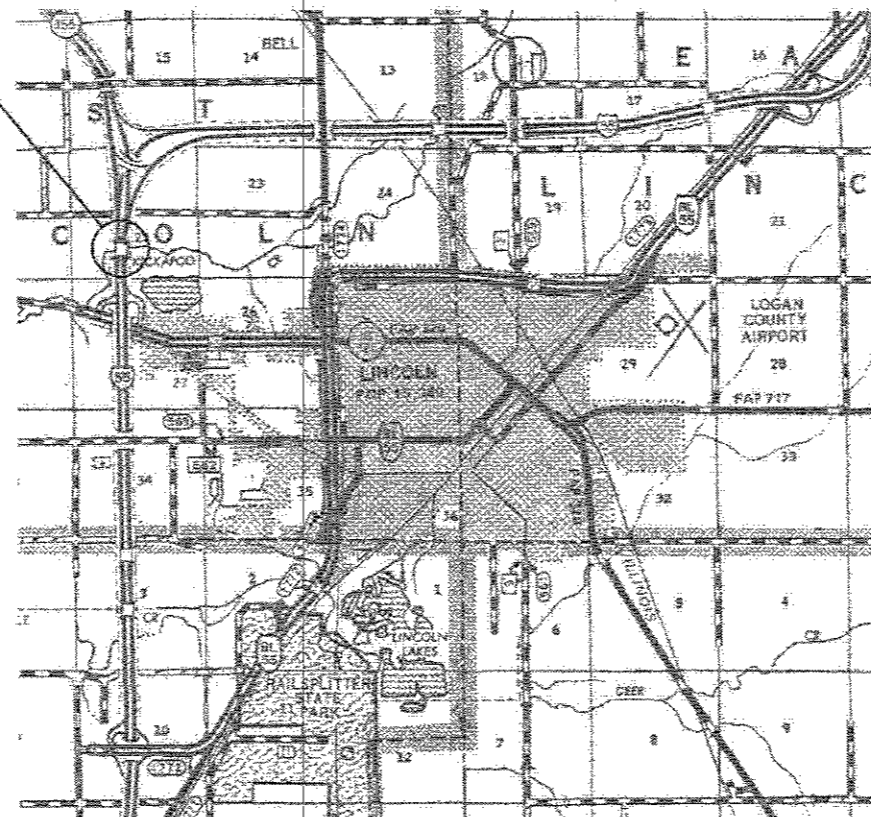
FOR INDEX OF SHEETS, SEE SHEET NO. 2

PROPOSED BRIDGE PAINTING

FAI ROUTE 55 (I-55)
SECTION (54-4) BP
PROJECT NHPP-89Z5(088)
BRIDGE PAINTING
LOGAN COUNTY

C-96-075-18

PROJECT LOCATION
SN 054-0048 (I-55 SB)
& SN 054-0049 (I-55 NB)
OVER KICKAPOO CREEK
0.5 MI NORTH OF IL 10 NEAR LINCOLN



FULL SIZE PLANS HAVE BEEN PREPARED USING STANDARD ENGINEERING SCALES. REDUCED SIZED PLANS WILL NOT CONFORM TO STANDARD SCALES. IN MAKING MEASUREMENTS ON REDUCED PLANS, THE ABOVE SCALES MAY BE USED.

J.U.L.I.E.
JOINT UTILITY LOCATION INFORMATION FOR EXCAVATION
1-800-892-0123
OR 811

BRIDGE MAINTENANCE ENGINEER: BRANDON DUDLEY - (217) 785-9290
BRIDGE INSPECTION ENGINEER: JASON JONES - (217) 785-5306

GROSS LENGTH = x.xx FT. = x.xxx MILE
NET LENGTH = x.xx FT. = x.xxx MILE

CONTRACT NO. 72K49

STATE OF ILLINOIS
DEPARTMENT OF TRANSPORTATION

SUBMITTED 30 January 2018
[Signature]
REGIONAL ENGINEER

Mar 23 2018
[Signature]
ENGINEER OF DESIGN AND ENVIRONMENT

Mar 23 2018
[Signature]
DIRECTOR OF HIGHWAYS PROJECT IMPLEMENTATION

PRINTED BY THE AUTHORITY
OF THE STATE OF ILLINOIS

INDEX OF SHEETS

- 1 COVER SHEET
- 2 INDEX, STANDARDS, GENERAL NOTES, & SIGNATURES
- 3 SUMMARY OF QUANTITIES
- 4-14 EXISTING BRIDGE PLANS (FOR INFORMATION ONLY)

HIGHWAY STANDARDS

- 000001-06
- 001006
- 701101-05
- 701106-02
- 701400-09
- 701406-11
- 701901-07
- 704001-08

GENERAL NOTES:

1. WORK SHALL CONSIST OF BLASTING AND PAINTING STRUCTURAL STEEL LOCATIONS AS DEFINED IN THE SPECIAL PROVISIONS. CLEANING AND PAINTING OF THE EXISTING STRUCTURAL STEEL SHALL BE AS SPECIFIED IN THE SPECIAL PROVISIONS FOR "CLEANING AND PAINTING EXISTING STEEL STRUCTURES". ALL AREAS TO BE PAINTED SHALL BE CLEANED PER NEAR WHITE BLAST CLEANING PER SSPC SP 10. ALL EXISTING STEEL CLEANED SHALL BE PAINTED ACCORDING TO THE REQUIREMENTS OF PAINT SYSTEM 1 - 0Z/E/U. THE COLOR OF THE FINAL FINISH COAT FOR THE OUTSIDE AND BOTTOM OF THE FASCIA BEAMS SHALL BE GREEN (MUNSELL 7.5G 4/8). THE FINISH COAT FOR ALL OTHER AREAS SHALL BE GRAY (MUNSELL 5B 7/1).
2. THE SSPC-OP-1 AND SSPC-OP2 PAINTING CONTRACTOR CERTIFICATIONS WILL BE REQUIRED FOR THESE BRIDGES.
3. CARE SHALL BE TAKEN NOT TO DAMAGE RUBBER BEARING OR JOINT COMPONENTS DURING BLASTING AND CLEANING OPERATIONS. ANY DAMAGE TO THESE COMPONENTS SHALL BE REPAIRED AT THE CONTRACTOR'S EXPENSE. RUBBER COMPONENTS SHALL NOT BE PAINTED.
4. UPON COMPLETION OF PAINTING OPERATIONS AT EACH LOCATION, THE CONTRACTOR SHALL REMOVE ALL DEBRIS FROM PIER OR ABUTMENT CAPS UPON WHICH PAINTING OPERATIONS TOOK PLACE. FINAL CLEANUP SHALL BE CONSIDERED INCIDENTAL TO THE PAINT PAY ITEM FOR THE RESPECTIVE LOCATION. THE ENGINEER SHALL HAVE THE RIGHT TO WITHHOLD PAYMENT UNTIL SATISFACTORY CLEANUP IS ACHIEVED.

STATE OF ILLINOIS DEPARTMENT OF TRANSPORTATION DIVISION OF HIGHWAYS DISTRICT 6	
EXAMINED	January 25 th 20 18 <i>[Signature]</i> ENGINEER OF OPERATIONS
EXAMINED	January 29 20 18 <i>[Signature]</i> ENGINEER OF PROJECT IMPLEMENTATION
EXAMINED	January 26 20 18 <i>[Signature]</i> ENGINEER OF PROGRAM DEVELOPMENT

I:\PROJECTS\OPERATIONS\Bridges\Bridges\plans\CAD\72K49_05-00-18 & 00-15\main\main\index.dgn
 FILE NAME: D:\OPERATIONS\Bridges\Bridges\plans\CAD\72K49_05-00-18 & 00-15\main\main\index.dgn

USER NAME = dudleybm	DESIGNED -	REVISED -	
PLOT SCALE = 100.0000 / in	DRAWN -	REVISED -	
PLOT DATE = 1/30/2018	CHECKED -	REVISED -	
	DATE -	REVISED -	

**STATE OF ILLINOIS
DEPARTMENT OF TRANSPORTATION**

INDEX OF SHEETS, STANDARDS, SIGNATURES, & GENERAL NOTES			
SCALE	SHEET OF SHEETS	STA.	TO STA.

F.A.I RTE.	SECTION	COUNTY	TOTAL SHEETS	SHEET NO.
55	(54-4) BP	LOGAN	14	2
CONTRACT NO. 72K49				
ILLINOIS FED. AID PROJECT				

0-01514-6006
NHPP 90/10

CODE NO.	ITEM	UNIT	TOTAL QUANTITY		
				BRIDGE	
				0047	RURAL
67100100	MOBILIZATION	L SUM	1	1	
70100700	TRAFFIC CONTROL AND PROTECTION, STANDARD 701406	L SUM	1	1	
Z0007101	CONTAINMENT AND DISPOSAL OF LEAD PAINT CLEANING RESIDUES NO. 1	L SUM	1	1	
Z0007102	CONTAINMENT AND DISPOSAL OF LEAD PAINT CLEANING RESIDUES NO. 2	L SUM	1	1	
Z0010501	CLEANING AND PAINTING STEEL BRIDGE NO. 1	L SUM	1	1	
Z0010502	CLEANING AND PAINTING STEEL BRIDGE NO. 2	L SUM	1	1	

MODEL: C:\dtd\...
FILE NAME: C:\OPERATIONS\Bridges\Bridges\CAD\72K49 - 0540048 & 0049.plt\149sheet.dwg

USER NAME = dudleybm	DESIGNED -	REVISED -
	DRAWN -	REVISED -
PLOT SCALE = 100.0000' / in.	CHECKED -	REVISED -
PLOT DATE = 1/30/2018	DATE -	REVISED -

STATE OF ILLINOIS
DEPARTMENT OF TRANSPORTATION

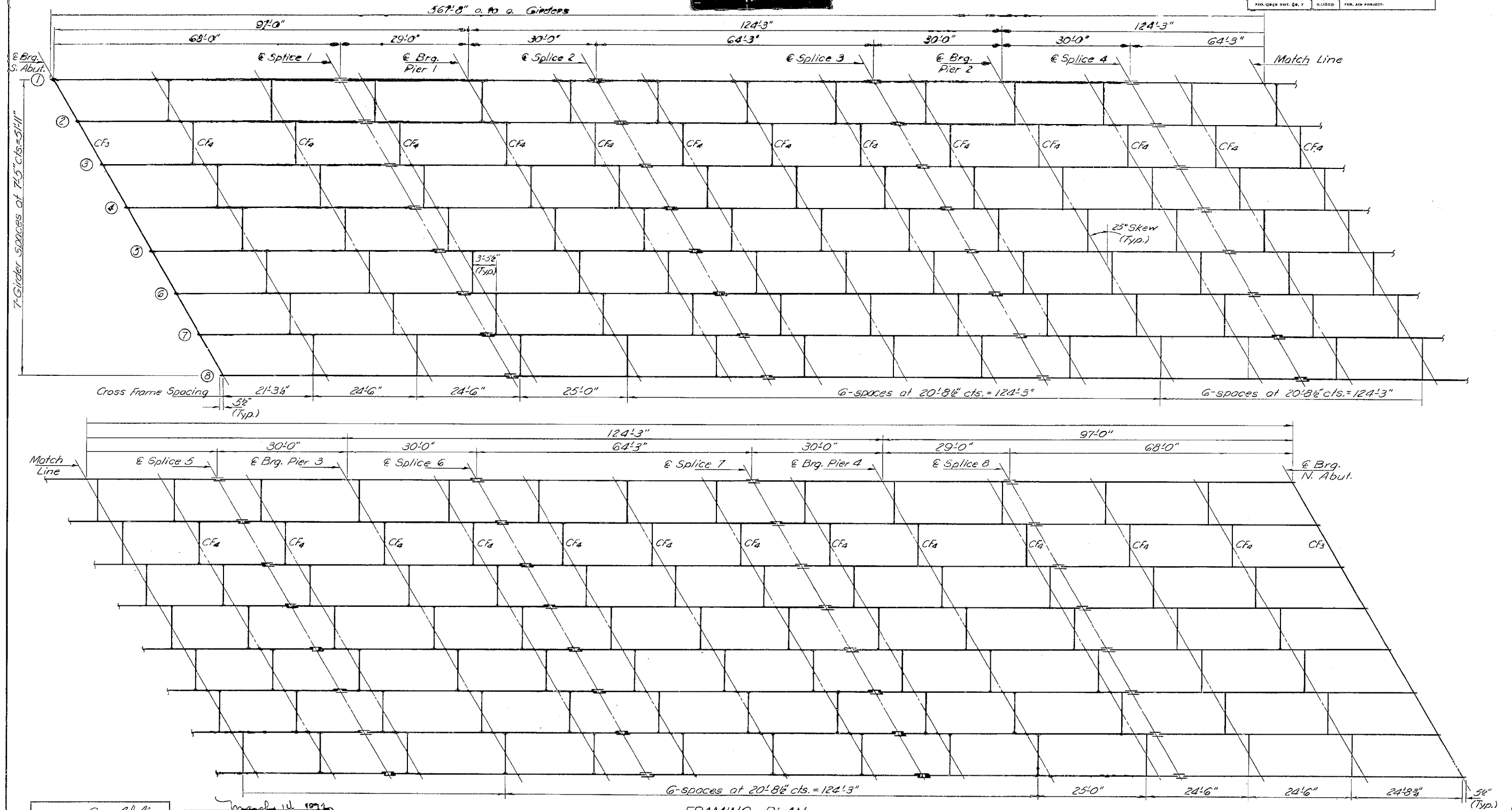
SUMMARY OF QUANTITIES

SCALE: SHEET OF SHEETS STA. TO STA.

F.A.I. RTE.	SECTION	COUNTY	TOTAL SHEETS	SHEET NO.
55	(54-4) BP	LOGAN	14	3
CONTRACT NO. 72K49			ILLINOIS FED. AID PROJECT	

STATE OF ILLINOIS
DEPARTMENT OF TRANSPORTATION

ROUTE NO.	SECTION	COUNTY	TOTAL SHEETS	SHEET NO.	SHEET NO. / 18
55	54-4B	LOGAN	55	25	55 UNRECORDED
FED. AID DIST. DIST. 7					



FRAMING PLAN

DESIGNED <i>Paul Chilton</i>	EXAMINED <i>March 14, 1974</i>
CHECKED <i>Stanley S. Linn</i>	APPROVED <i>[Signature]</i>
DRAWN <i>R. Doty</i>	APPROVED <i>[Signature]</i>
CHECKED <i>S. L.</i>	APPROVED <i>[Signature]</i>

Note:
See sheet #19 for remainder
of Structural Steel details.

STRUCTURAL STEEL
SOUTH BOUND LANES
F.A.I. RT. 55 SEC. 54-4B
LOGAN COUNTY
STA. 376+75.00

MODEL: Default
FILE NAME: C:\OPERATIONS\Bids\Bids\Bids\Bids\CAD\72K49 - 05-10-08 & 0049\p18rta\shsht.dgn

USER NAME = dudleybm	DESIGNED -	REVISED -
PLOT SCALE = 100.0000' / in.	DRAWN -	REVISED -
PLOT DATE = 1/30/2018	CHECKED -	REVISED -
	DATE -	REVISED -

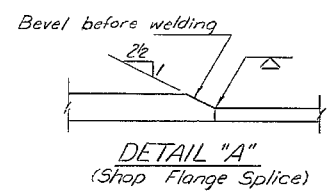
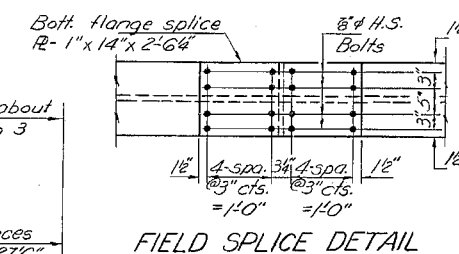
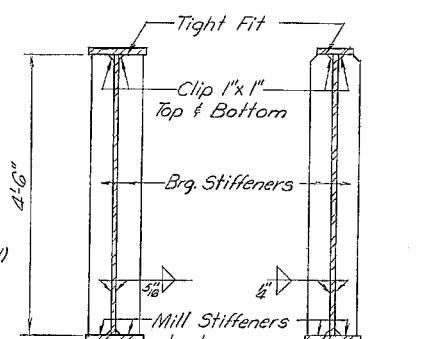
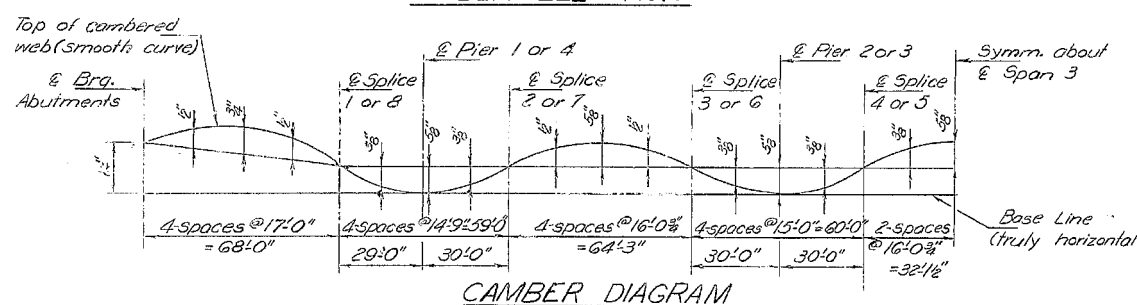
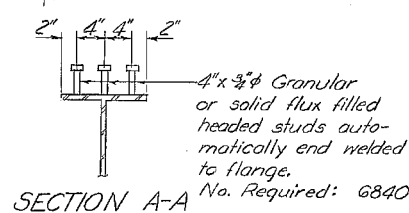
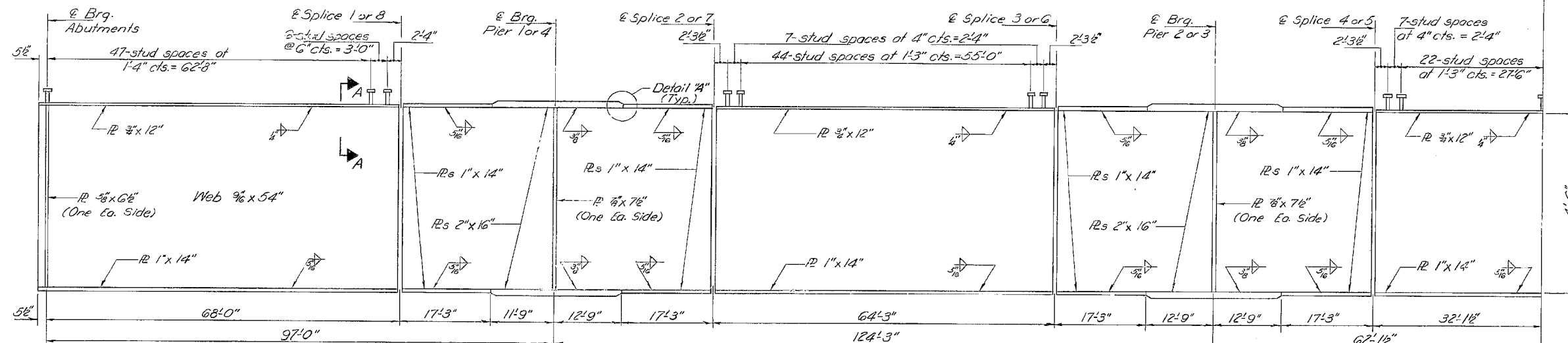
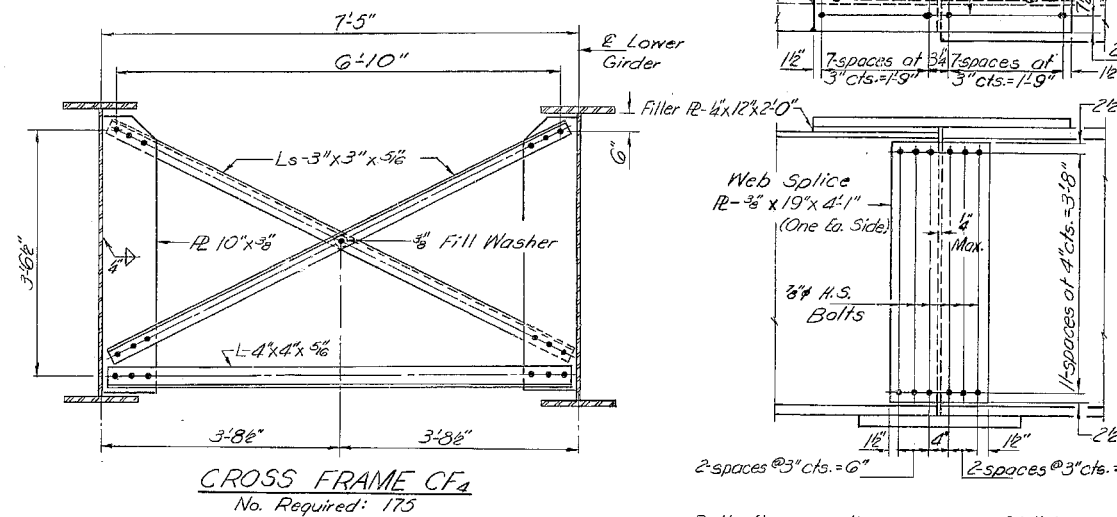
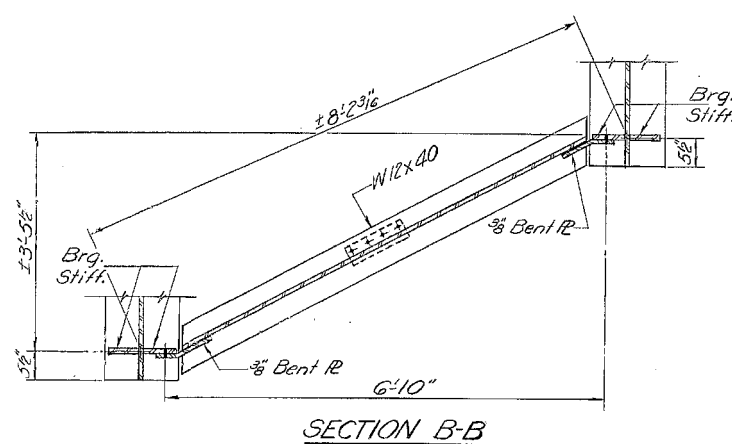
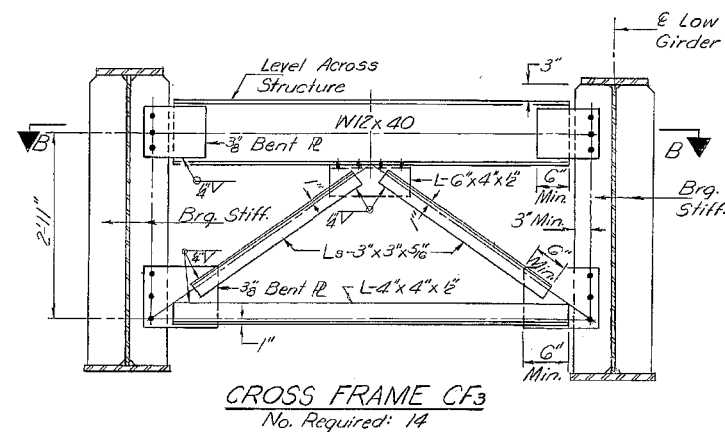
STATE OF ILLINOIS
DEPARTMENT OF TRANSPORTATION

EXISTING PLANS - SN 054-0048 & 0049 (FOR INFORMATION ONLY)			
SCALE:	SHEET	OF SHEETS	STA. TO STA.

F.A.I. RTE.	SECTION	COUNTY	TOTAL SHEETS	SHEET NO.
55	(54-4) BP	LOGAN	14	5
CONTRACT NO. 72K49				
ILLINOIS FED. AID PROJECT				

STATE OF ILLINOIS
DEPARTMENT OF TRANSPORTATION

SHEET NO. 19	99 SHEETS
DESIGNED BY: <i>Stanley S. Lim</i>	CHECKED BY: <i>S. L.</i>
DRAWN BY: <i>P. Doty</i>	DATE: <i>March 14, 1972</i>



DESIGNED <i>Stanley S. Lim</i>	EXAMINED <i>March 14, 1972</i>
CHECKED <i>Stanley S. Lim</i>	PASSED
DRAWN <i>P. Doty</i>	APPROVED
CHECKED <i>S. L.</i>	

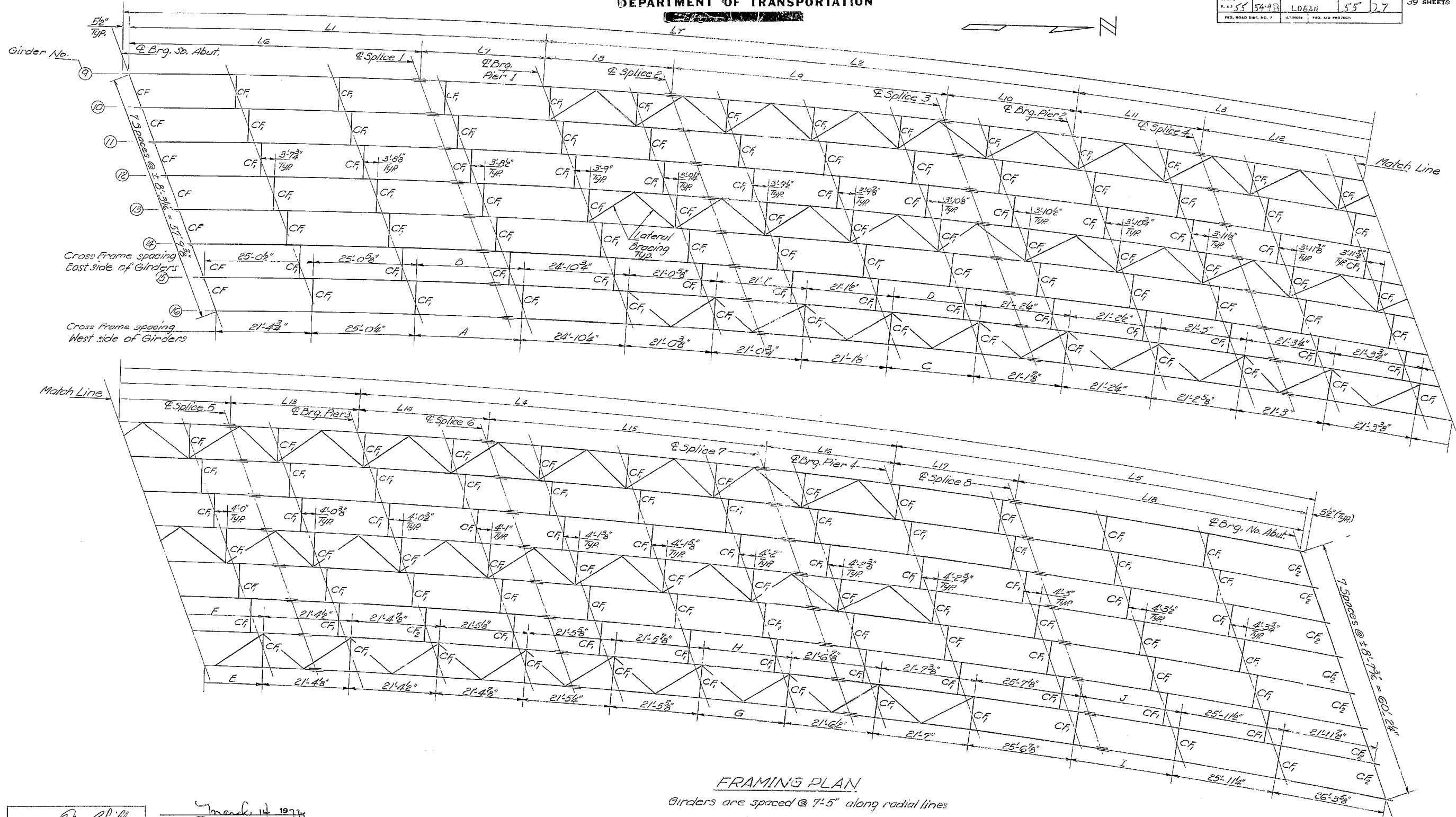
STRUCTURAL STEEL
SOUTH BOUND LANES
F.A.I. RT. 55 SEC. 54-4B
LOGAN COUNTY
STA. 376+7500

MODEL Defaul
FILE NAME: C:\OPERATIONS\Bids\Bids\Bids\Bids\CAD\72K49 - 05-10-048 & 0049.pst\strsteel.dgn

USER NAME = dudleybm	DESIGNED -	REVISED -	STATE OF ILLINOIS DEPARTMENT OF TRANSPORTATION	EXISTING PLANS - SN 054-0048 & 0049 (FOR INFORMATION ONLY)	F.A.I. RTE. 55	SECTION (54-4) BP	COUNTY LOGAN	TOTAL SHEETS 14	SHEET NO. 6
PLOT SCALE = 100,0000' / in.	CHECKED -	REVISED -	SCALE:	SHEET OF SHEETS STA. TO STA.	ILLINOIS	FED. AID PROJECT	CONTRACT NO. 72K49		
PLOT DATE = 1/30/2018	DATE -	REVISED -							

STATE OF ILLINOIS
DEPARTMENT OF TRANSPORTATION

ROUTE NO.	SECTION	COUNTY	TOTAL SHEETS	SHEET NO.
54-4B	LOGAN	55	27	39 SHEETS



FRAMING PLAN

Girders are spaced @ 7'-5" along radial lines

DESIGNED	<i>Ran Colville</i>	EXAMINED	<i>Mark L. 1972</i>
CHECKED	<i>Stanley S. Lin</i>	PASSED	<i>Paul E. [Signature]</i>
DRAWN	<i>A. Borfozo</i>	APPROVED	<i>[Signature]</i>
CHECKED	<i>S. L.</i>		

Notes: Place CF along radial lines
See Sheet #22 for table L₁ thru L₁₈ & A thru J dimensions.
See Sheets #21 & #22 for remainder of Structural Steel details.

STRUCTURAL STEEL
NORTHBOUND LANES
F.A.I. RT. 55 SEC. 54-4B
LOGAN COUNTY
STA. 376+75.00

MODEL: Default
FILE: \MAILBOX\OPERATIONS\Bridges\Bridges\Plans_CAD\72K49 - 05-10-048 & 0049\pstrtblnshet.dgn

USER NAME = dudleybm	DESIGNED -	REVISED -
PLOT SCALE = 100,0000' / in.	DRAWN -	REVISED -
PLOT DATE = 1/30/2018	CHECKED -	REVISED -
	DATE -	REVISED -

STATE OF ILLINOIS
DEPARTMENT OF TRANSPORTATION

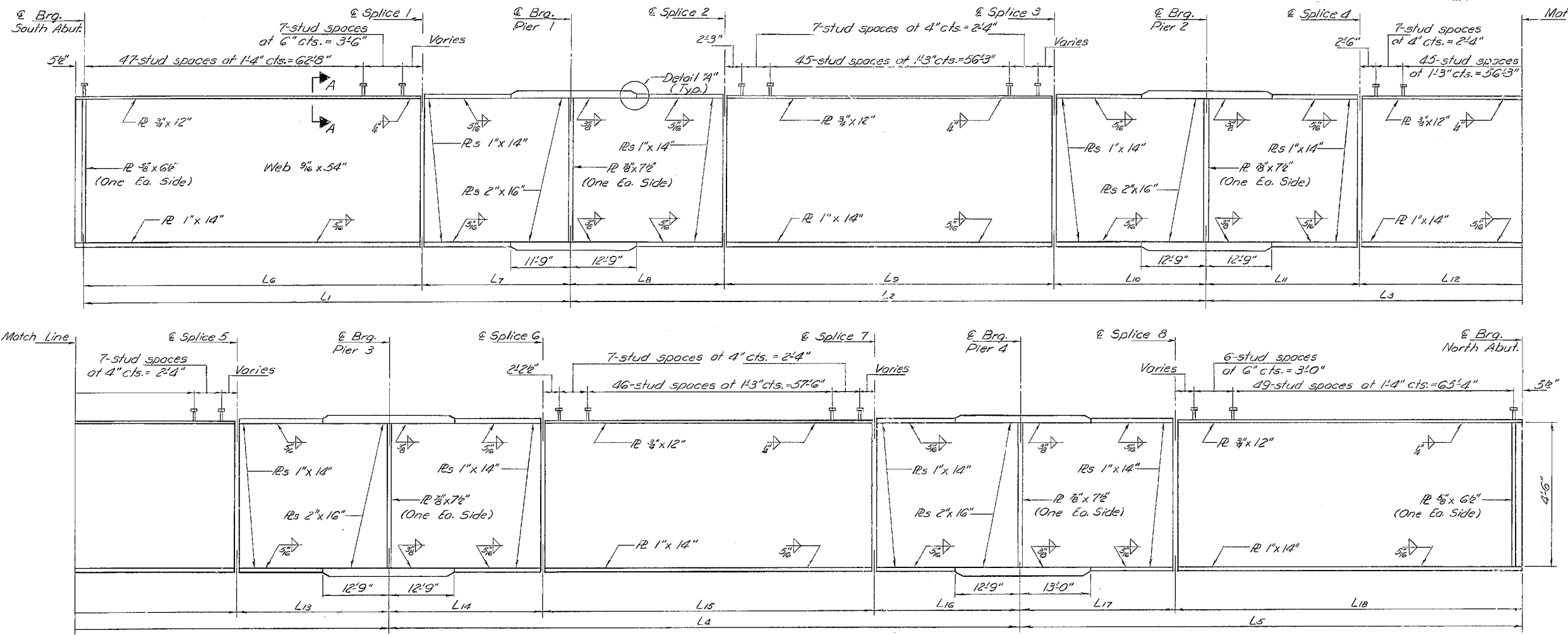
EXISTING PLANS - SN 054-0048 & 0049
(FOR INFORMATION ONLY)

SCALE: SHEET OF SHEETS STA. TO STA.

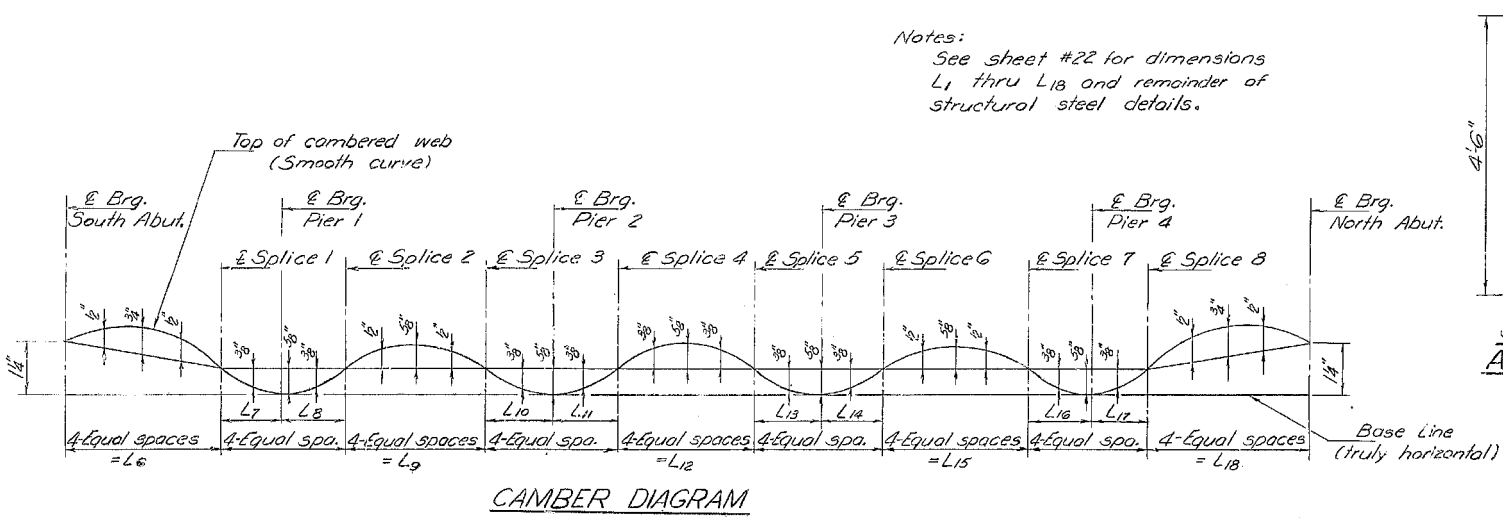
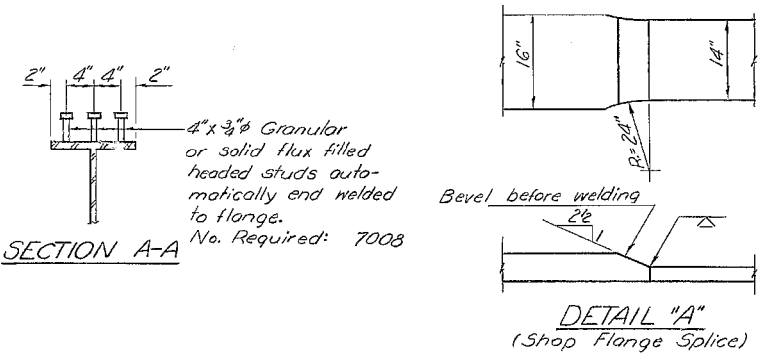
F.A.I. RTE.	SECTION	COUNTY	TOTAL SHEETS	SHEET NO.
55	(54-4) BP	LOGAN	14	7
CONTRACT NO. 72K49				
ILLINOIS FED. AID PROJECT				

STATE OF ILLINOIS
DEPARTMENT OF TRANSPORTATION

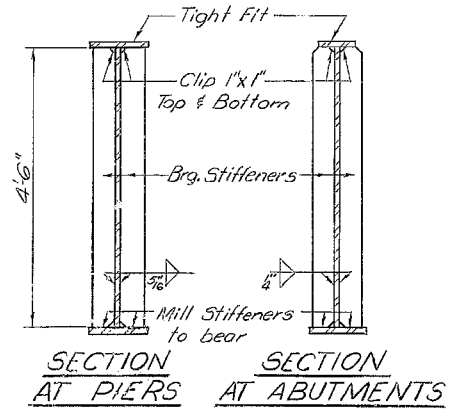
ROUTE NO.	SECTION	COUNTY	TOTAL SHEETS	SHEET NO.	SHEET NO. 21
F.A.I. 55	54-4B	LOGAN	55	28	39 SHEETS
FED. ROAD DIST. NO. 7	ILLINOIS	TEN. V.S. PROJECT			



GIRDER ELEVATION
(All dimensions along & Girder)



Notes:
See sheet #22 for dimensions L1 thru L18 and remainder of structural steel details.



STRUCTURAL STEEL
NORTH BOUND LANES
F.A.I. RT. 55 SEC. 54-4B
LOGAN COUNTY
STA. 376+7500

DESIGNED <i>Paul Phillips</i>	EXAMINED <i>March 14 1972</i>
CHECKED <i>Stanley S. L...</i>	PASSED
DRAWN <i>R. Doty</i>	APPROVED
CHECKED <i>S. L.</i>	

MODEL Default
FILE NAME: C:\OPERATIONS\Bids\Bids\Bids\Bids\CAD\72K49 - 05-10-048 & 0049.psd\brnsheet.dgn

USER NAME = dudleybm	DESIGNED -	REVISED -	STATE OF ILLINOIS DEPARTMENT OF TRANSPORTATION		EXISTING PLANS - SN 054-0048 & 0049 (FOR INFORMATION ONLY)		F.A.I. RTE. 55	SECTION (54-4) BP	COUNTY LOGAN	TOTAL SHEETS 14	SHEET NO. 8
PLOT SCALE = 100,0000' / in.	DRAWN -	REVISED -	SCALE:		SHEET OF SHEETS	STA. TO STA.	CONTRACT NO. 72K49				
PLOT DATE = 1/30/2018	CHECKED -	REVISED -	ILLINOIS		FED. AID PROJECT						
	DATE -	REVISED -									

STATE OF ILLINOIS
DEPARTMENT OF TRANSPORTATION

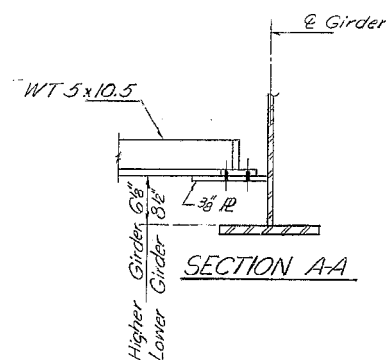
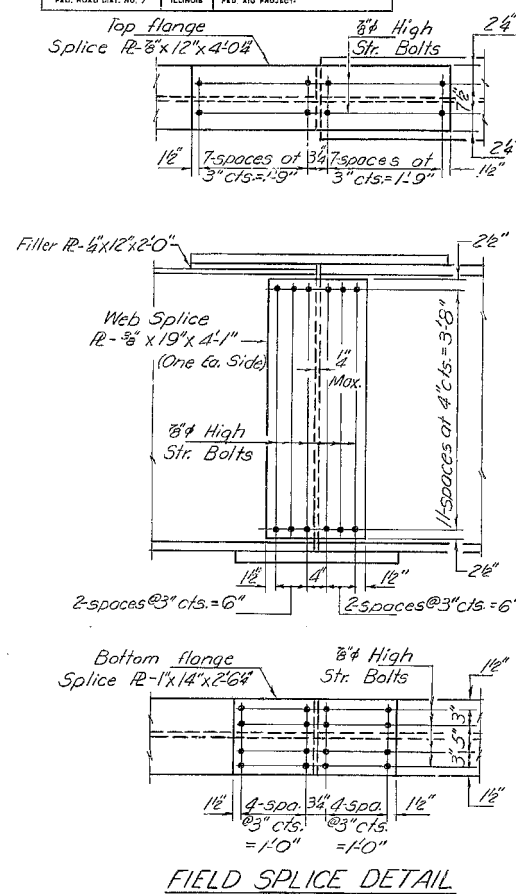
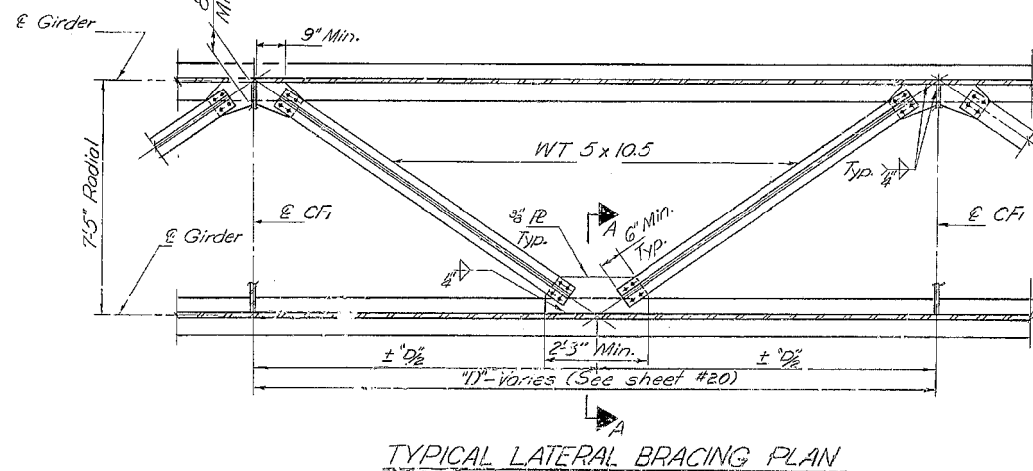
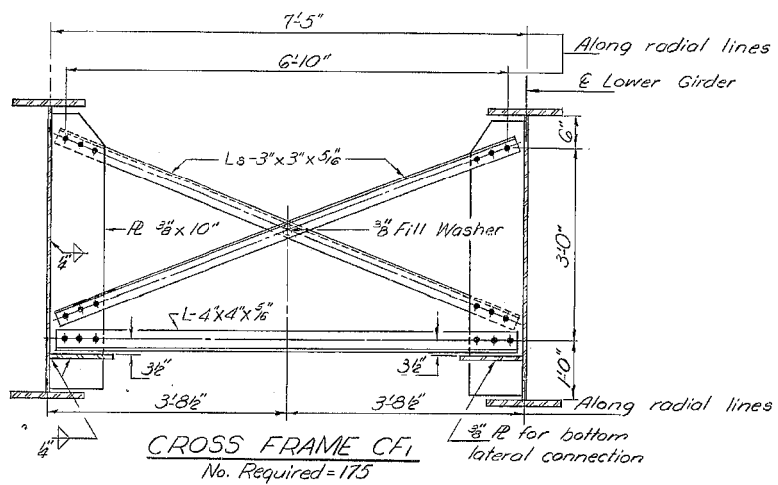
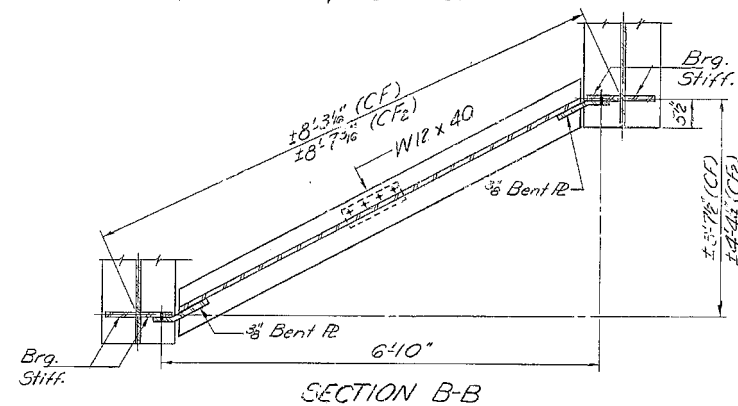
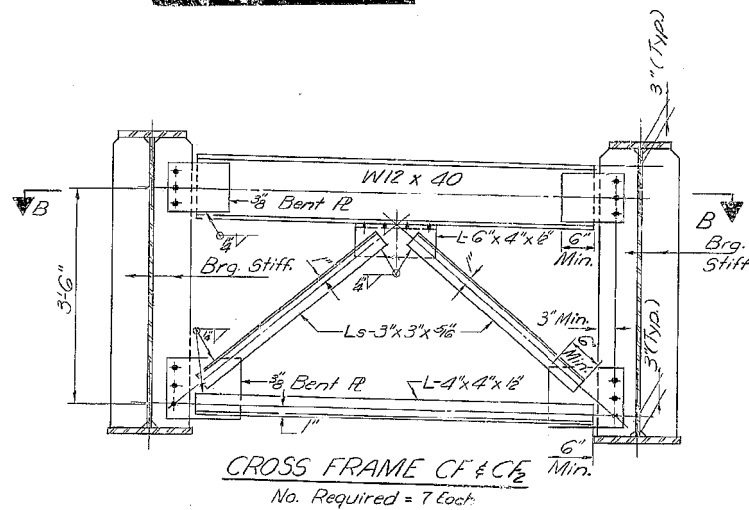
ROUTE NO.	SECTION	COUNTY	TOTAL SHEETS	SHEET NO.	SHEET NO. 22
F.A.I. RTE.	54-4B	LOGAN	55	29	39 SHEETS
FED. ROAD DIST. NO. 7	ILLINOIS	FED. AID PROJECT:			

TABLE OF "L" DIMENSIONS

Radius	G-9	G-10	G-11	G-12	G-13	G-14	G-15	G-16
L ₁	98'-0 3/8"	98'-1 7/8"	98'-1 3/8"	98'-1 3/4"	98'-2"	98'-2 1/8"	98'-2 1/4"	98'-2 3/8"
L ₂	126'-6 3/8"	126'-7"	126'-7 3/8"	126'-7 3/4"	126'-8 1/8"	126'-8 1/4"	126'-8 3/8"	126'-9 1/8"
L ₃	127'-4 3/8"	127'-8 3/4"	127'-8 3/8"	127'-9 1/8"	127'-9 1/4"	127'-9 3/8"	127'-10 1/8"	127'-10 3/8"
L ₄	128'-9 3/8"	128'-10 3/4"	128'-10 3/8"	128'-11 1/8"	128'-11 1/4"	128'-11 3/8"	129'-0 1/8"	129'-1 1/8"
L ₅	101'-5 3/8"	101'-5 3/4"	101'-5 3/8"	101'-6 1/8"	101'-6 1/4"	101'-6 3/8"	101'-7 1/8"	101'-7 3/8"
L ₆	68'-8 3/8"	68'-8 3/4"	68'-8 3/8"	68'-8 3/4"	68'-9"	68'-9 1/8"	68'-9 1/4"	68'-9 3/8"
L ₇	29'-4 3/8"	29'-4 3/4"	29'-4 3/8"	29'-4 3/4"	29'-5"	29'-5 1/8"	29'-5 1/4"	29'-5 3/8"
L ₈	30'-5 3/8"	30'-5 3/4"	30'-5 3/8"	30'-5 3/4"	30'-5 3/4"	30'-6"	30'-6 1/8"	30'-6 1/4"
L ₉	65'-5 3/8"	65'-5 3/4"	65'-5 3/8"	65'-5 3/4"	65'-6"	65'-6 1/8"	65'-6 1/4"	65'-6 3/8"
L ₁₀	30'-7 3/8"	30'-7 3/4"	30'-7 3/8"	30'-7 3/4"	30'-8"	30'-8 1/8"	30'-8 1/4"	30'-8 3/8"
L ₁₁	30'-8 3/8"	30'-8 3/4"	30'-8 3/8"	30'-8 3/4"	30'-9"	30'-9 1/8"	30'-9 1/4"	30'-9 3/8"
L ₁₂	66'-0 3/8"	66'-0 3/4"	66'-0 3/8"	66'-0 3/4"	66'-1"	66'-1 1/8"	66'-1 1/4"	66'-1 3/8"
L ₁₃	30'-11 3/8"	30'-11 3/4"	30'-11 3/8"	30'-11 3/4"	30'-11 3/4"	30'-11 3/8"	30'-11 3/4"	30'-11 3/8"
L ₁₄	30'-11 3/8"	31'-0"	31'-0 3/8"	31'-0 3/4"	31'-0 3/4"	31'-0 3/8"	31'-0 3/4"	31'-0 3/8"
L ₁₅	66'-7 3/8"	66'-7 3/4"	66'-7 3/8"	66'-8"	66'-8 1/8"	66'-8 1/4"	66'-8 3/8"	66'-9"
L ₁₆	31'-2 3/8"	31'-2 3/4"	31'-2 3/8"	31'-2 3/4"	31'-3"	31'-3 1/8"	31'-3 1/4"	31'-3 3/8"
L ₁₇	30'-2 3/8"	30'-3"	30'-3 3/8"	30'-3 3/4"	30'-3 3/4"	30'-3 3/8"	30'-3 3/4"	30'-3 3/8"
L ₁₈	71'-2 3/8"	71'-2 3/4"	71'-2 3/8"	71'-3"	71'-3 1/8"	71'-3 1/4"	71'-3 3/8"	71'-4 1/8"
L ₁₉	583'-5 3/8"	583'-7 3/8"	583'-9"	583'-11"	584'-0 3/8"	584'-2 3/8"	584'-4 3/8"	584'-6 3/8"

TABLE OF DIMENSIONS "A" THRU "J"

	G-9	G-10	G-11	G-12	G-13	G-14	G-15	G-16
A	24'-11 3/8"	24'-11 3/8"	25'-0"	25'-0 3/4"	25'-0 1/2"	25'-0 3/4"	25'-0 3/4"	25'-1 1/8"
B	24'-11 3/8"	24'-11 3/8"	25'-0"	25'-0 3/4"	25'-0 1/2"	25'-0 3/4"	25'-0 3/4"	25'-1 1/8"
C	20'-11 3/8"	20'-11 3/8"	21'-0 3/8"	21'-0 3/8"	21'-0 3/8"	21'-1 1/8"	21'-1 1/8"	21'-2 3/8"
D	20'-11 3/8"	21'-0"	21'-0 3/8"	21'-0 3/8"	21'-1 1/8"	21'-1 1/8"	21'-2"	21'-2 3/8"
E	21'-1 3/8"	21'-1 3/8"	21'-2"	21'-2 3/8"	21'-2 3/8"	21'-3 3/8"	21'-3 3/8"	21'-4 3/8"
F	21'-1 3/8"	21'-1 3/8"	21'-2 3/8"	21'-2 3/8"	21'-3 3/8"	21'-3 3/8"	21'-4 3/8"	21'-4 3/8"
G	21'-3 3/8"	21'-4 3/8"	21'-4 3/8"	21'-5 3/8"	21'-5 3/8"	21'-6 3/8"	21'-6 3/8"	21'-6 3/8"
H	25'-9 3/8"	25'-9 3/8"	25'-9 3/8"	25'-9 3/8"	25'-10 3/8"	25'-10 3/8"	25'-11 3/8"	25'-11 3/8"
I	25'-9 3/8"	25'-9 3/8"	25'-10 3/8"	25'-10 3/8"	25'-10 3/8"	25'-11 3/8"	25'-11 3/8"	25'-11 3/8"
J	25'-9 3/8"	25'-9 3/8"	25'-10 3/8"	25'-10 3/8"	25'-10 3/8"	25'-11 3/8"	25'-11 3/8"	25'-11 3/8"



STRUCTURAL STEEL DETAILS
NORTH BOUND LANES
F.A.I. RT. 55 SEC. 54-4B
LOGAN COUNTY
STA. 376+75.00

DESIGNED *David Calhoun*
CHECKED *Stanley S. Linn*
DRAWN *R. Doty*
CHECKED *S. L.*

EXAMINED *March 14 1974*
PASSED
APPROVED

USER NAME = dudleybm	DESIGNED -	REVISED -
PLOT SCALE = 100,0000' / in.	DRAWN -	REVISED -
PLOT DATE = 1/30/2018	CHECKED -	REVISED -
	DATE -	REVISED -

STATE OF ILLINOIS
DEPARTMENT OF TRANSPORTATION

EXISTING PLANS - SN 054-0048 & 0049
(FOR INFORMATION ONLY)

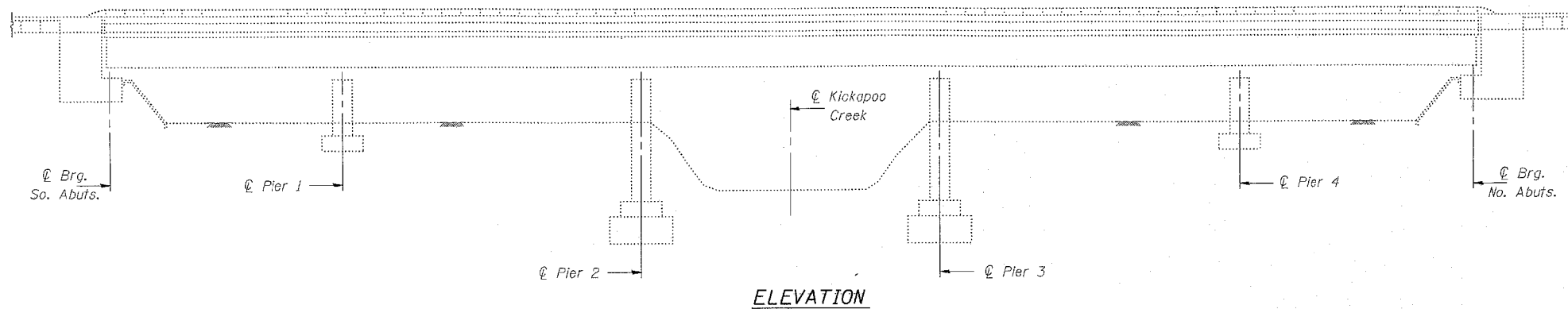
SCALE: SHEET OF SHEETS STA. TO STA.

F.A.I. RTE.	SECTION	COUNTY	TOTAL SHEETS	SHEET NO.
55	(54-4) BP	LOGAN	14	9
				CONTRACT NO. 72K49
ILLINOIS FED. AID PROJECT				

STATE OF ILLINOIS
DEPARTMENT OF TRANSPORTATION

ROUTE NO.	SECTION	COUNTY	TOTAL SHEETS	SHEET NO.
F.A.I. RT. 55	(54-4B) I-2	LOGAN	14	6
FED. ROAD DIST. NO. 7	ILLINOIS	FED. AID PROJECT		

SHEET NO. 1
6 SHEETS



GENERAL NOTES

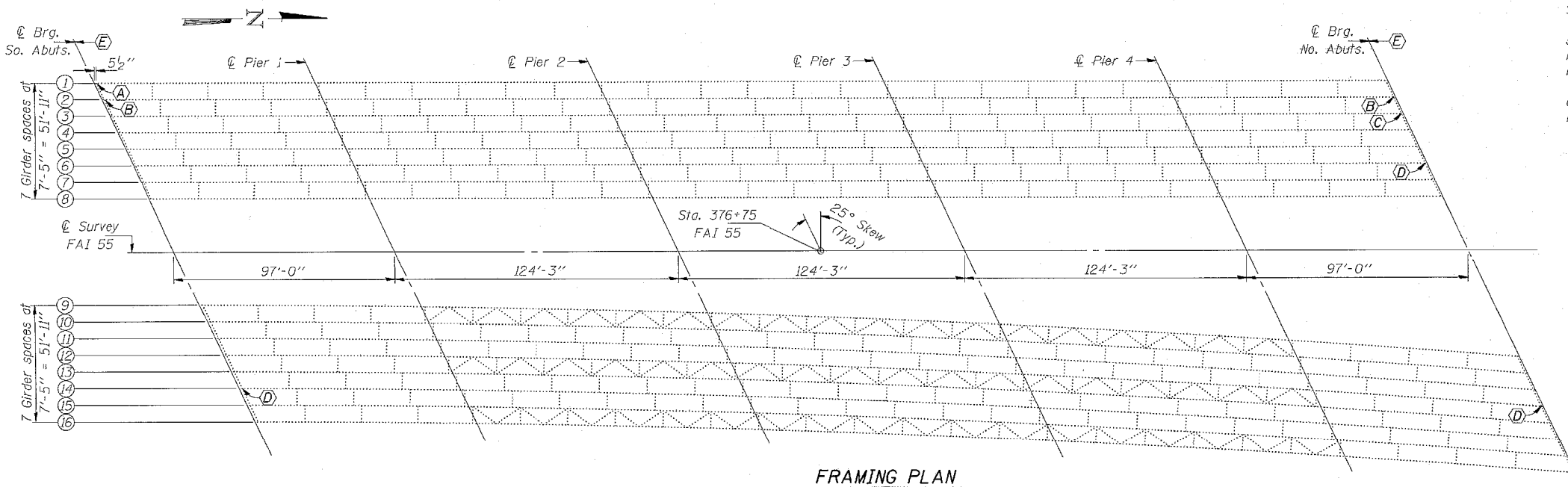
All new structural steel shall conform to AASHTO Classification M-270 Gr. 36. All new fasteners shall be high strength bolts. Holes shall be subpunched or subdrilled $\frac{1}{16}$ " ϕ and reamed in the field to $\frac{1}{16}$ " ϕ for $\frac{7}{8}$ " ϕ high strength bolts (except as noted on the plans) after new structural steel sections are properly fitted into position.

Plan dimensions and details relative to existing structure have been taken from existing plans and are subject to nominal construction variations. It shall be the Contractor's responsibility to verify such dimensions and details in the field and make necessary approved adjustments prior to construction or ordering of materials. Such variations shall not be cause for additional compensation for a change in the scope of the work, however, the Contractor will be paid for the quantity actually furnished at the unit price bid for the work.

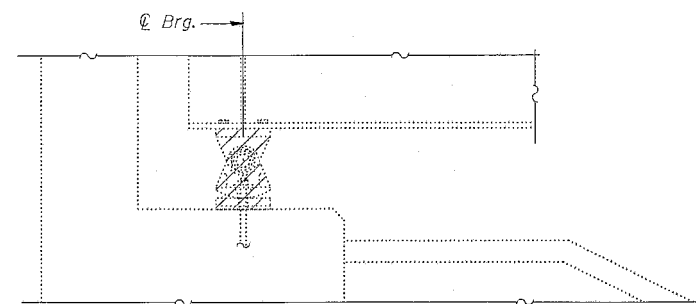
Existing Structural steel shall only be cleaned and painted as required by the Special Provision "Cleaning and Painting Adjacent Areas of Existing Steel Structures".

The inorganic zinc-silicate/acrylic/acrylic paint system shall be used for shop and field painting of new structural steel except where otherwise noted. The color of the acrylic finish coat shall be Interstate Green, Munsell No. 7.5G4/B. See Special Provisions.

Removal of all damaged members necessary to complete the work as detailed on the plans and as specified in the Special Provisions shall be considered incidental to the contract.



FRAMING PLAN



EXISTING BEARING REMOVAL DETAIL

Before installing the new bearings, burn existing anchor bolts flush with existing concrete surface. Grind existing anchor bolts smooth and seal with epoxy. Cost is incidental to Jack and Remove Existing Bearings.

Notes: (A) (B) (C) (D) Existing Beam ends to be repaired.
(E) Remove and replace existing bearings at Beams 1 thru 16, North and South Abutments.

TOTAL BILL OF MATERIAL

ITEM	UNIT	QUANTITY
Furnishing and Erecting Structural Steel	Pound	11,310
Elastomeric Bearing Assembly Type II	Each	16
Elastomeric Bearing Assembly Type III	Each	16
Jack and Remove Existing Bearings	Each	32

BRIDGE REPAIRS
F.A.I. RT. 55 SEC. (54-4B)I-2
LOGAN COUNTY
STR. NO. 054-0048 (S.B.)
& 054-0049 (N.B.)

DESIGNED	<i>Christopher H. McKeown</i>	JULY 8	19 94
CHECKED	<i>Kenneth P. Strutt</i>	EXAMINED	<i>Todd E. Adams</i>
DRAWN	<i>D. Terbert</i>	PASSED	
CHECKED	<i>CHM KPS</i>		

USER NAME = dudleybm	DESIGNED -	REVISED -
	DRAWN -	REVISED -
PLOT SCALE = 100,0000' / in.	CHECKED -	REVISED -
PLOT DATE = 1/30/2018	DATE -	REVISED -

STATE OF ILLINOIS
DEPARTMENT OF TRANSPORTATION

EXISTING PLANS - SN 054-0048 & 0049
(FOR INFORMATION ONLY)

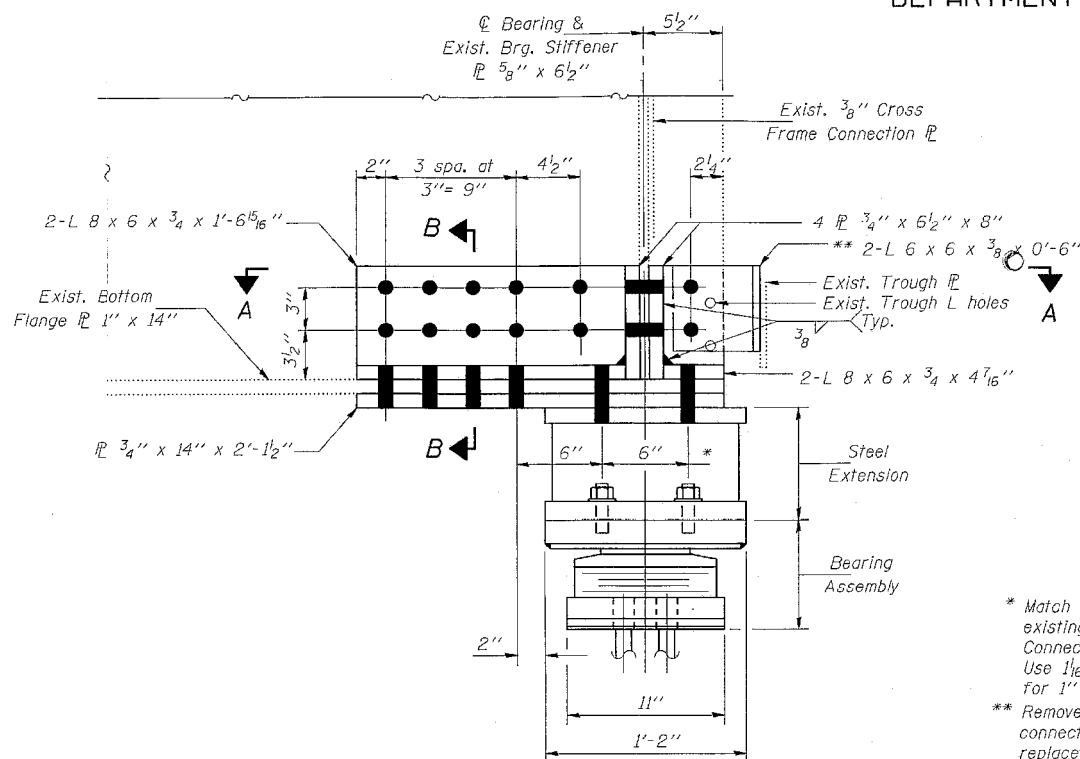
SCALE: SHEET OF SHEETS STA. TO STA.

F.A.I. RTE.	SECTION	COUNTY	TOTAL SHEETS	SHEET NO.
55	(54-4) BP	LOGAN	14	10
CONTRACT NO. 72K49				
ILLINOIS FED. AID PROJECT				

STATE OF ILLINOIS
DEPARTMENT OF TRANSPORTATION

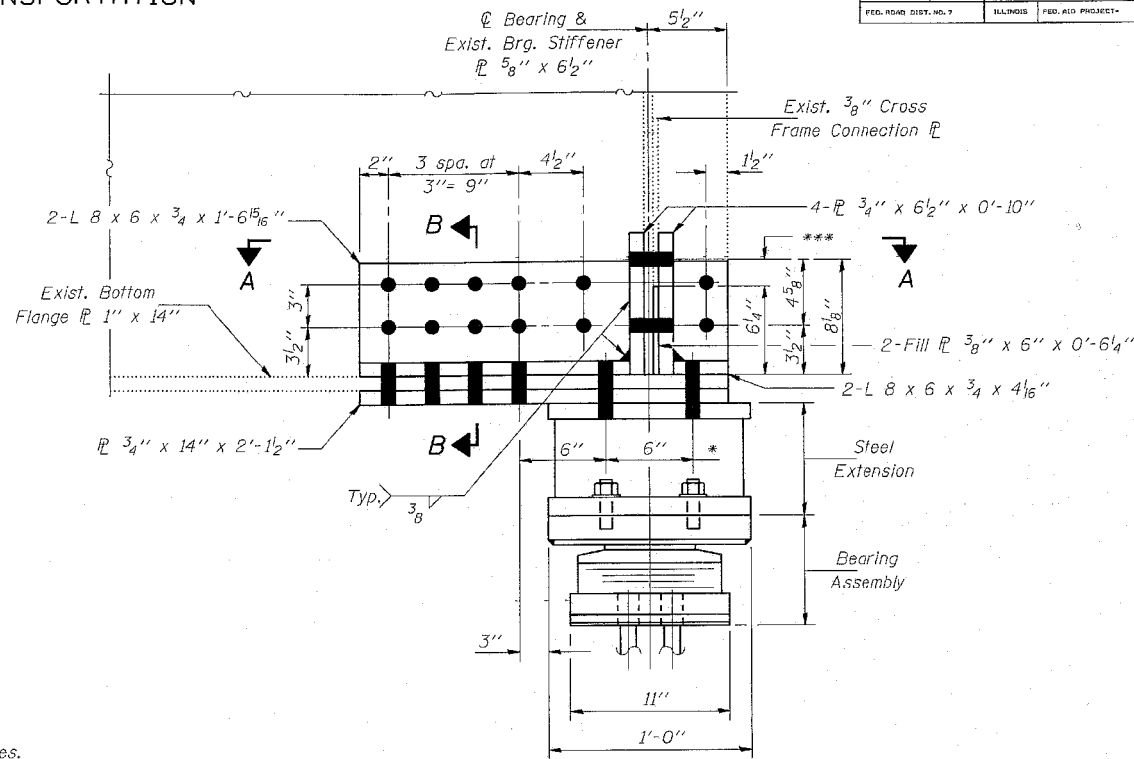
ROUTE NO.	SECTION	COUNTY	TOTAL SHEETS	SHEET NO.
F.A.I. RT.55	(54-4B) I-2	LOGAN	14	7
FED. ROAD DIST. NO. 7	ILLINOIS	FED. AID PROJECT		

SHEET NO. 2
6 SHEETS



ELEVATION

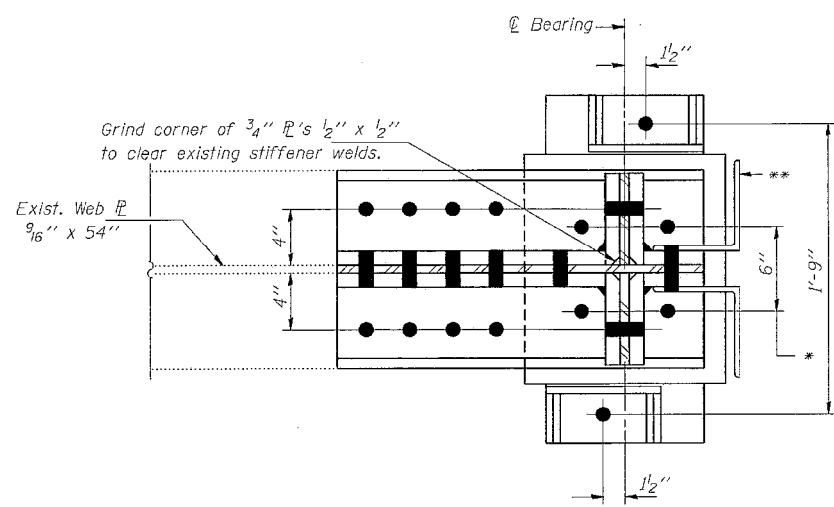
Girder 1, South Abutment



ELEVATION

Girder 2, North Abutment & South Abutment

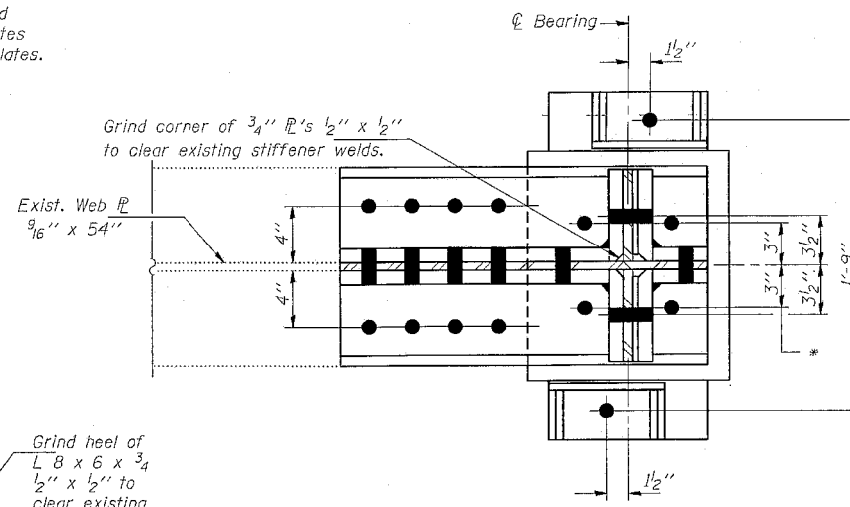
- * Match locations of existing Bearing Connection Bolts. Use 1 1/8 inch diameter Holes for 1 inch diameter H.S. Bolts.
- ** Remove exist. Trough connection angles and replace with new angles. Field drill connection holes in replacement angles and grind toe of angles, if necessary, to fit.
- *** Use holes in existing cross-frame connection PL's and web stiffeners as templates for field drilling repair plates.



SECTION A-A

Notes: All holes to be 1 5/16 inch diameter for 7/8 inch diameter H.S. Bolts unless noted otherwise.

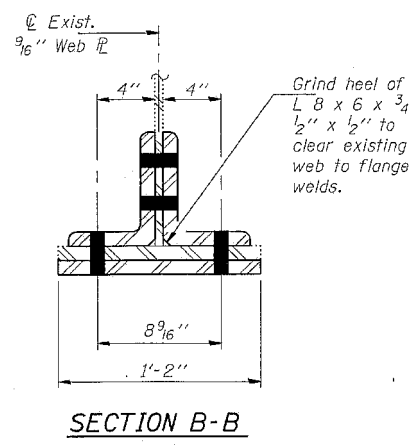
REPAIR A



SECTION A-A

Notes: All holes to be 1 5/16 inch diameter for 7/8 inch diameter H.S. Bolts unless noted otherwise.

REPAIR B



SECTION B-B

DESIGNED	CHM	JULY 8	19 94
CHECKED	KPS	EXAMINED	<i>John E. Adams</i>
DRAWN	DHerbert	PASSED	
CHECKED	CHM KPS		

BRIDGE REPAIRS
F.A.I. RT. 55 SEC. (54-4B)I-2
LOGAN COUNTY
STR. NO. 054-0048 (S.B.)
& 054-0049 (N.B.)

MODEL Default
FILE NAME: C:\OPERATIONS\Bridges\Bridges\Bridges_CAD\72K49 - 0540048 & 0049.plt\brnshet.dgn

USER NAME = dudleybm	DESIGNED -	REVISED -
PLOT SCALE = 100.0000' / in.	DRAWN -	REVISED -
PLOT DATE = 1/30/2018	CHECKED -	REVISED -
	DATE -	REVISED -

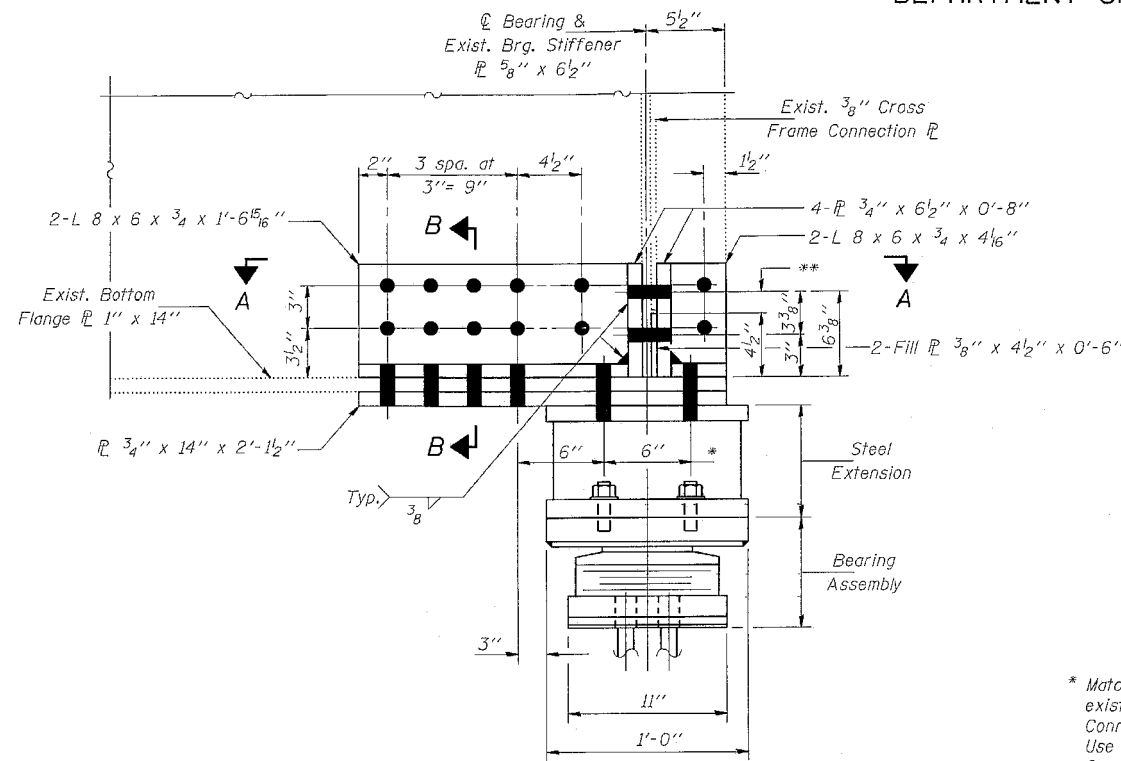
STATE OF ILLINOIS
DEPARTMENT OF TRANSPORTATION

EXISTING PLANS - SN 054-0048 & 0049			
(FOR INFORMATION ONLY)			
SCALE:	SHEET	OF SHEETS	STA. TO STA.

F.A.I. RTE.	SECTION	COUNTY	TOTAL SHEETS	SHEET NO.
55	(54-4) BP	LOGAN	14	11
CONTRACT NO. 72K49				
ILLINOIS FED. AID PROJECT				

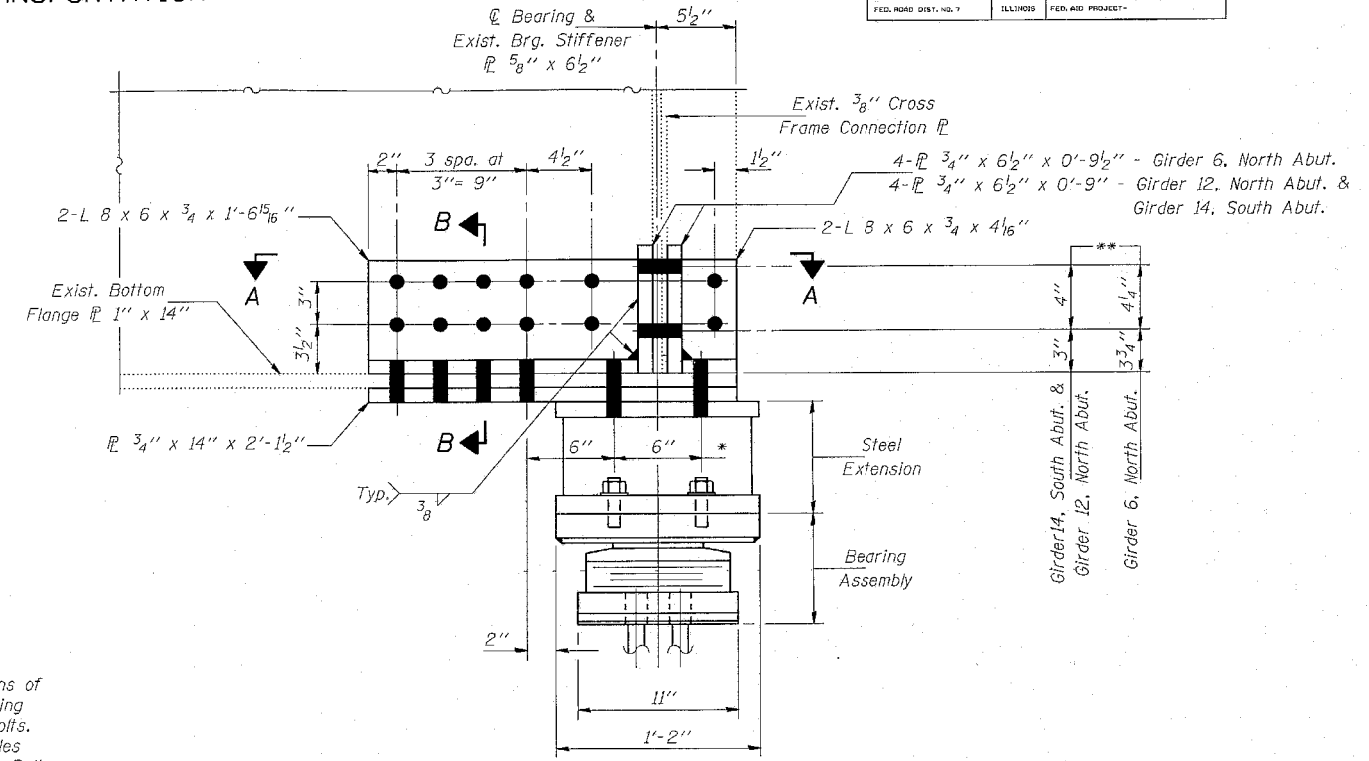
STATE OF ILLINOIS
DEPARTMENT OF TRANSPORTATION

ROUTE NO.	SECTION	COUNTY	SHEETS	SHEET	SHEET NO. 3
F.A.I. RT. 55	(54-4B) I-2	LOGAN	14	8	6 SHEETS
FED. ROAD DIST. NO. 7	ILLINOIS	FED. AID PROJECT			



ELEVATION

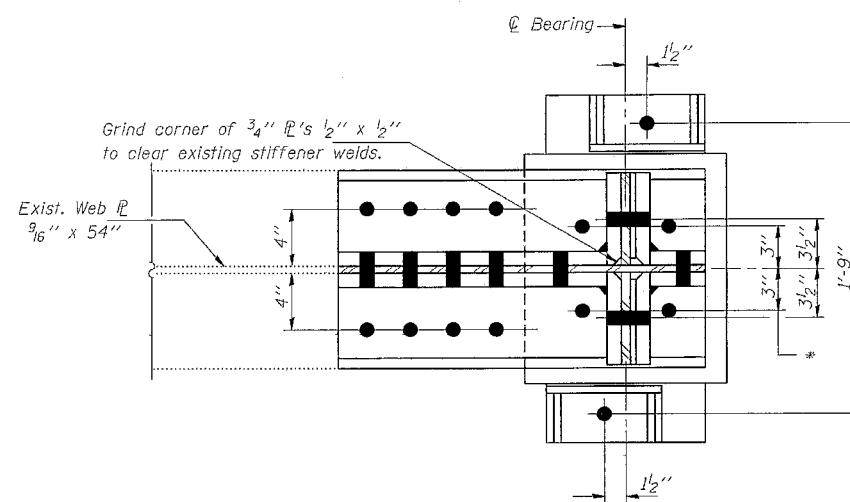
Girder 3, North Abutment



ELEVATION

Girder 14, South Abutment
Girders 6 & 12, North Abutment

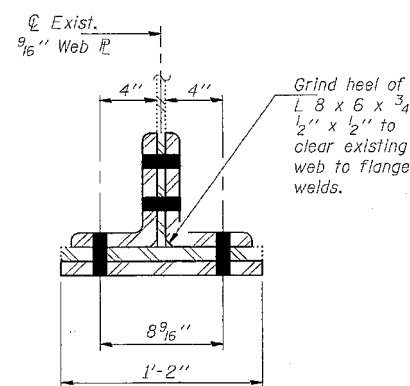
- * Match locations of existing Bearing Connection Bolts. Use 1 1/8" Holes for 1" H.S. Bolts.
- ** Use holes in existing cross-frame connection PL's and web stiffeners as templates for field drilling repair plates.



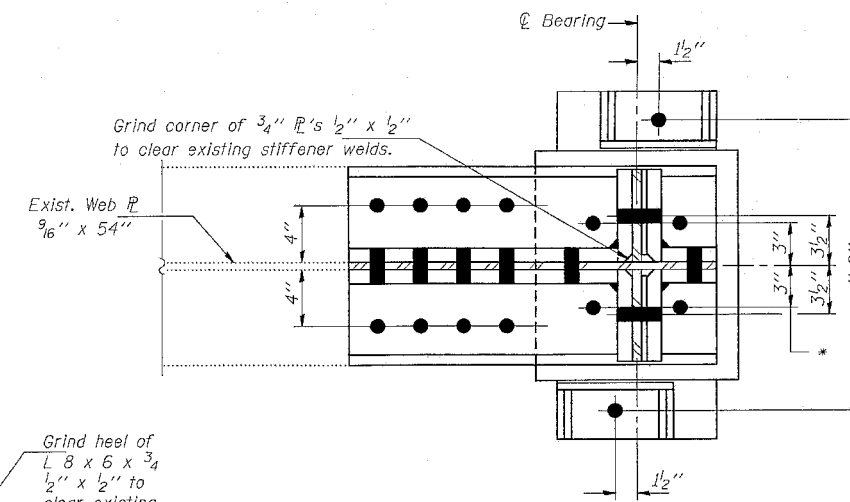
SECTION A-A

Notes: All holes to be 15/16" φ for 7/8" φ H.S. Bolts unless noted otherwise.

REPAIR C



SECTION B-B



SECTION A-A

Notes: All holes to be 15/16" φ for 7/8" φ H.S. Bolts unless noted otherwise.

REPAIR D

DESIGNED	CHM	JULY 8	19 94
CHECKED	KPS	EXAMINED	<i>Joseph E. Alcorn</i> ENGINEER OF STRUCTURAL SERVICES
DRAWN	D-Herbert	PASSED	ENGINEER OF BRIDGES AND STRUCTURES
CHECKED	CHM KPS		

BRIDGE REPAIRS
F.A.I. RT. 55 SEC. (54-4B)I-2
LOGAN COUNTY
STR. NO. 054-0048 (S.B.)
& 054-0049 (N.B.)

STATE OF ILLINOIS
DEPARTMENT OF TRANSPORTATION

EXISTING PLANS - SN 054-0048 & 0049
(FOR INFORMATION ONLY)

USER NAME = dudleybm	DESIGNED -	REVISED -
PLOT SCALE = 100,0000' / in.	DRAWN -	REVISED -
PLOT DATE = 1/30/2018	CHECKED -	REVISED -
	DATE -	REVISED -

SCALE: SHEET OF SHEETS STA. TO STA.

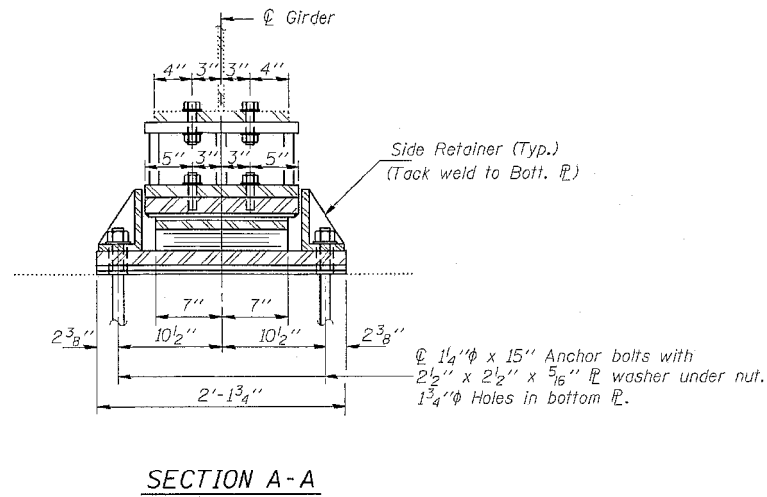
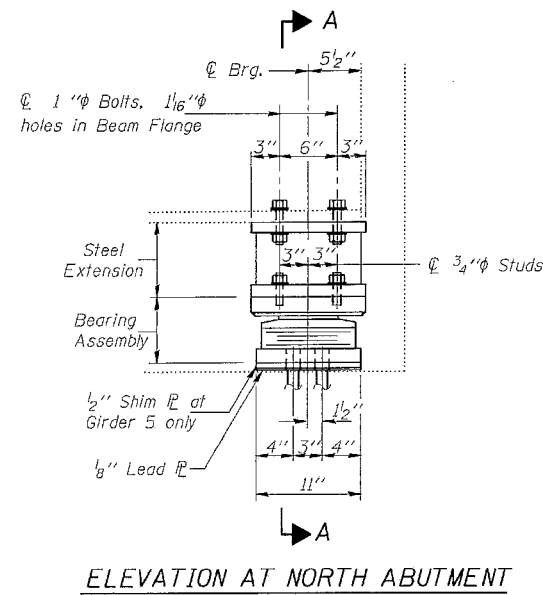
F.A.I. RTE.	SECTION	COUNTY	TOTAL SHEETS	SHEET NO.
55	(54-4) BP	LOGAN	14	12
CONTRACT NO. 72K49				
ILLINOIS FED. AID PROJECT				

STATE OF ILLINOIS
DEPARTMENT OF TRANSPORTATION

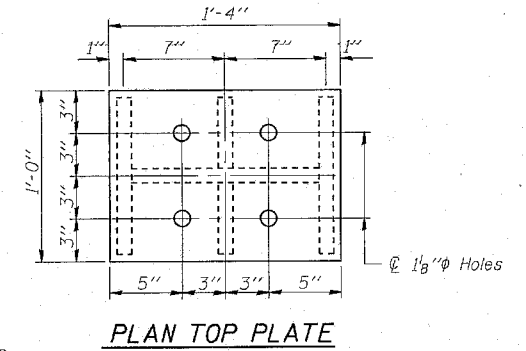
ROUTE NO.	SECTION	COUNTY	SHEETS	SHEET	SHEET NO. 4
F.A.I. RT. 55	(54-4B) I-2	LOGAN	14	9	6 SHEETS
FED. ROAD DIST. NO. 7	SUB-DIVISION	FED. AID PROJECT			

GIRDER REACTIONS

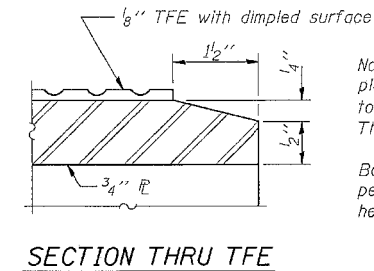
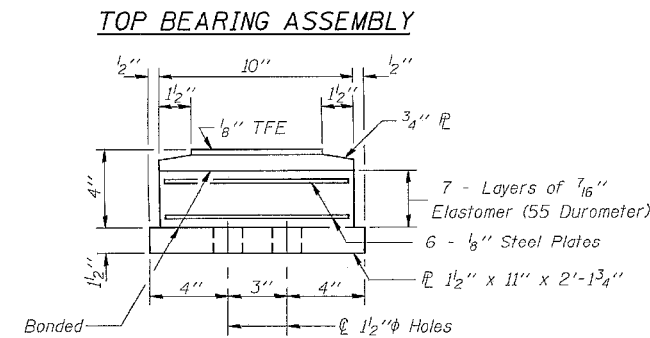
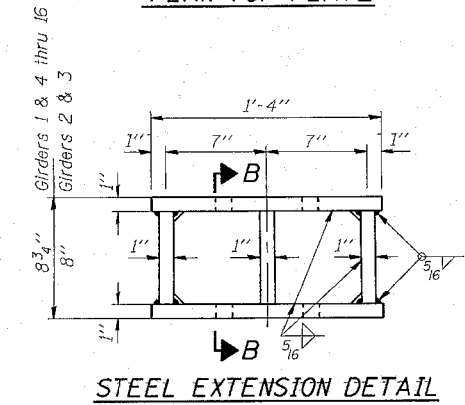
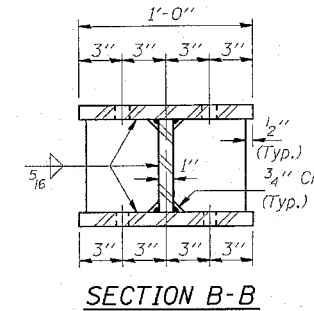
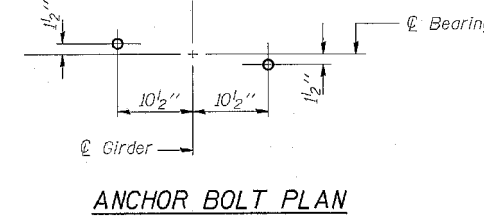
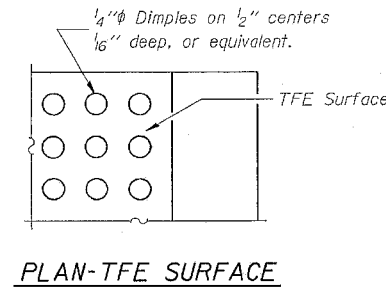
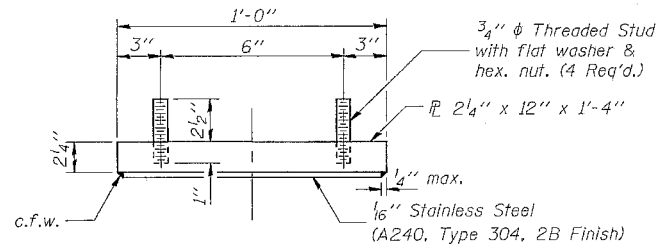
R ₁	(K)	54.0
R ₂	(K)	43.2
Imp.	(K)	9.7
R (Total)	(K)	106.9



Notes: Diaphragm removal and replacement may be required to facilitate drilling holes for Anchor Bolts. Cost is incidental to "Furnishing and Erecting Structural Steel".
New steel extensions, side retainers, lead plates, connection bolts and anchor bolts are included in "Furnishing and Erecting Structural Steel".
See sheet 6 for Anchor Bolt installation.
Prior to ordering any material, the Contractor shall verify in the field all bearing height and shim thickness dimensions.

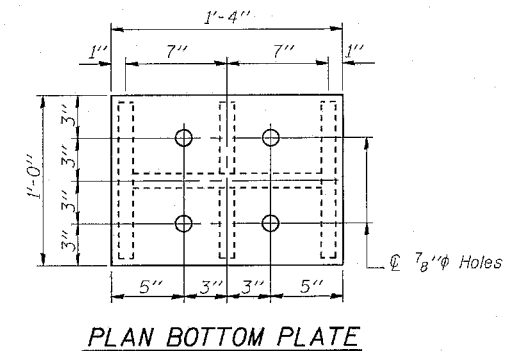


TYPE II TFE ELASTOMERIC EXP. BRG.



Note: The 1/8" TFE sheet shall be bonded directly to the top steel plate with a two-component, medium viscosity epoxy resin, conforming to the requirements of the Federal Specification MMM-A-134, Type I. The bond agent shall be applied on the full area of the contact surfaces.

Bonding of 1/8" TFE sheet during vulcanizing process will be permitted provided the process and method of adjusting assembly height is approved by the Engineer.

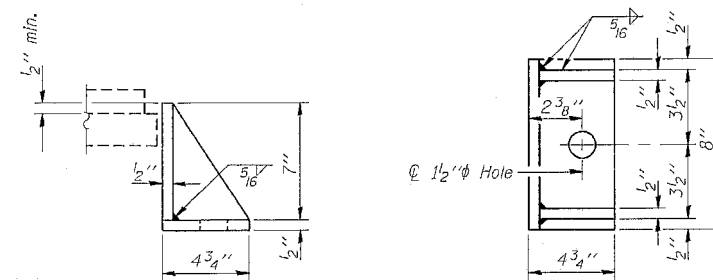


BILL OF MATERIAL

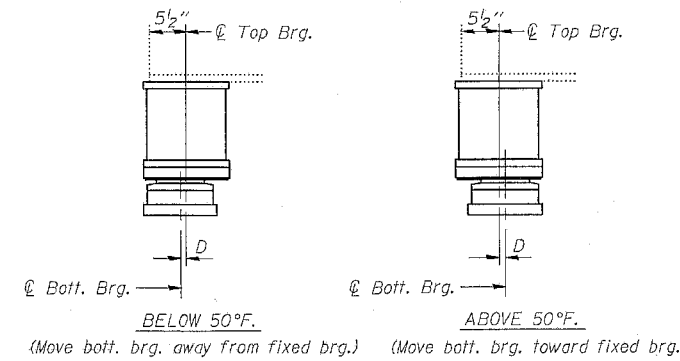
Item	Unit	Total
Elastomeric Bearing Assembly Type II	Each	16

NORTH ABUTMENT
TYPE II BEARING REPLACEMENT
F.A.I. RT. 55 SEC. (54-4B)I-2
LOGAN COUNTY
STR. NO. 054-0048 (S.B.)
& 054-0049 (N.B.)

DESIGNED	CHM	JULY 8	19 94
CHECKED	KPS	EXAMINED	Joseph E. Adams
DRAWN	DHerbert	PASSED	ENGINEER OF STRUCTURAL SERVICES
CHECKED	CHM KPS		ENGINEER OF BRIDGES AND STRUCTURES



Equivalent rolled angle with stiffeners will be allowed in lieu of welded plates.



SETTING ANCHOR BOLTS AT EXP. BRG.

D = 1/8" per each 100' of expansion for every 15° temp. change from the normal temp. of 50°F.

MODEL: Default
FILE NAME: C:\OPERATIONS\Bridges\Bridges\Bridges_CAD\72K49_05-10-048 & 0049\patt\brnsheet.dgn

USER NAME = dudleybm	DESIGNED -	REVISED -
PLOT SCALE = 100.0000' / in.	DRAWN -	REVISED -
PLOT DATE = 1/30/2018	CHECKED -	REVISED -
	DATE -	REVISED -

STATE OF ILLINOIS
DEPARTMENT OF TRANSPORTATION

EXISTING PLANS - SN 054-0048 & 0049
(FOR INFORMATION ONLY)

SCALE: SHEET OF SHEETS STA. TO STA.

F.A.I. RTE.	SECTION	COUNTY	TOTAL SHEETS	SHEET NO.
55	(54-4) BP	LOGAN	14	13
CONTRACT NO. 72K49				
ILLINOIS FED. AID PROJECT				

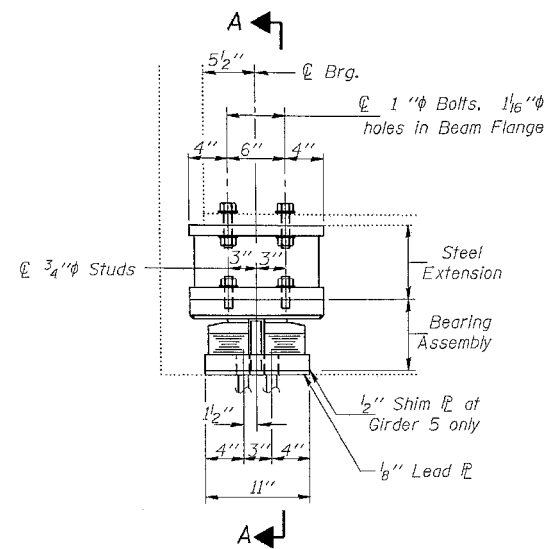
STATE OF ILLINOIS
DEPARTMENT OF TRANSPORTATION

GIRDER REACTIONS

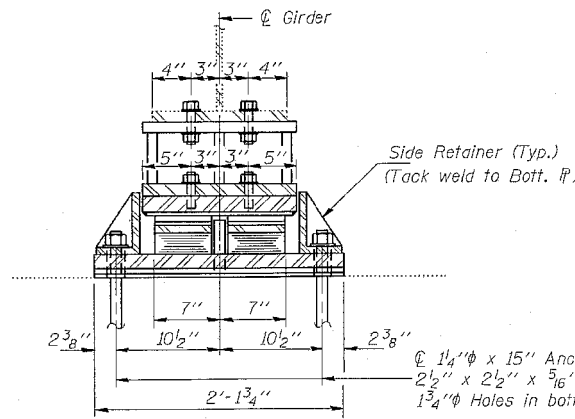
R ₁	(K)	51.9
R ₂	(K)	43.0
Imp.	(K)	9.7
R (Total)	(K)	104.6

ROUTE NO.	SECTION	COUNTY	TOTAL SHEETS	SHEET NO.
F.A.I. RT. 55	(54-4B) I-2	LOGAN	14	10
FED. ROAD DIST. NO. 7	ILLINOIS	FED. AID PROJECT		

SHEET NO. 5
6 SHEETS

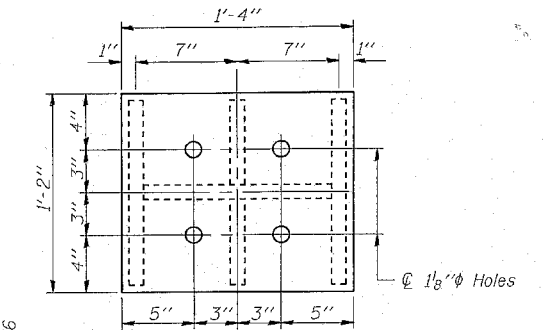


ELEVATION AT SOUTH ABUTMENT
TYPE III ELASTOMERIC EXP. BRG.

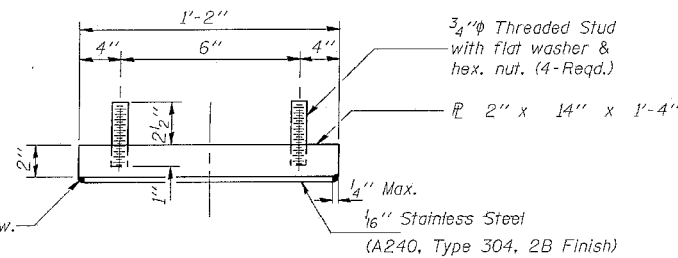


SECTION A-A

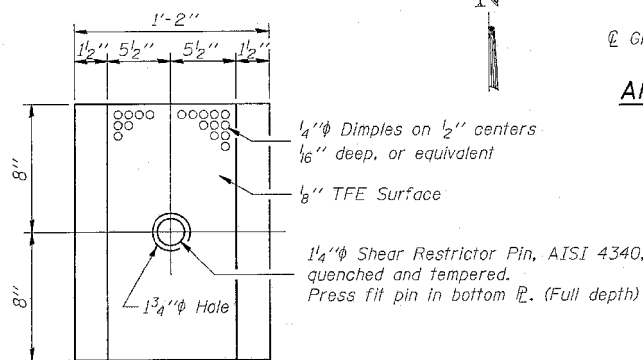
Notes: Diaphragm removal and replacement may be required to facilitate drilling holes for Anchor Bolts. Cost is incidental to "Furnishing and Erecting Structural Steel".
New steel extensions, side retainers, lead plates, connection bolts and anchor bolts are included in "Furnishing and Erecting Structural Steel".
See sheet 6 for Anchor Bolt installation.
Prior to ordering any material, the Contractor shall verify in the field all bearing height and shim thickness dimensions.



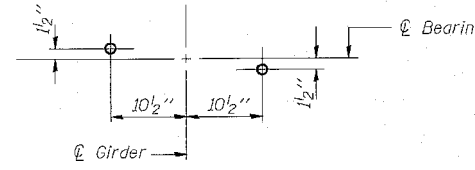
PLAN TOP PLATE



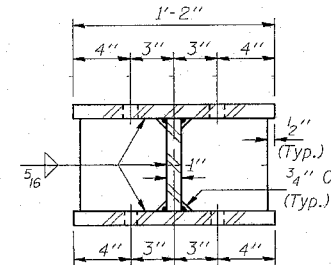
TOP BEARING ASSEMBLY



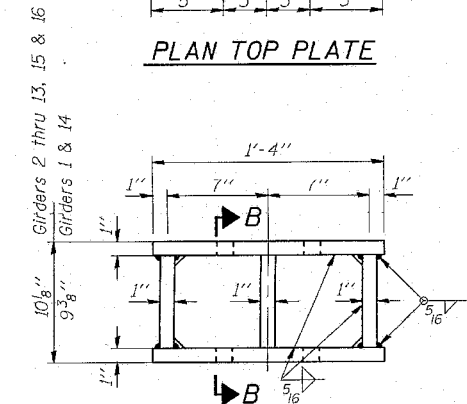
PLAN-TFE ELASTOMERIC BRG.



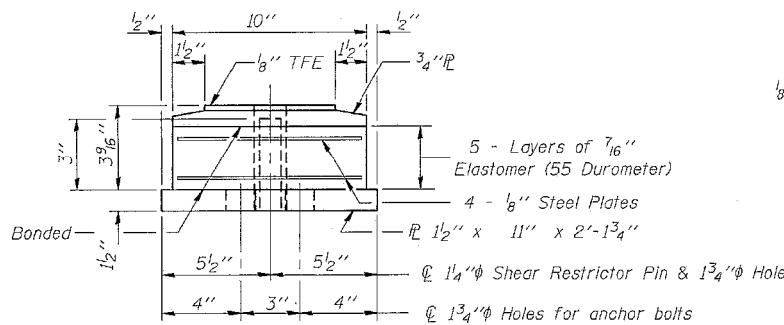
ANCHOR BOLT PLAN



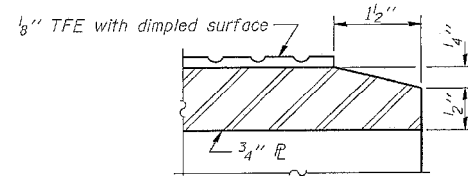
SECTION B-B



STEEL EXTENSION DETAIL



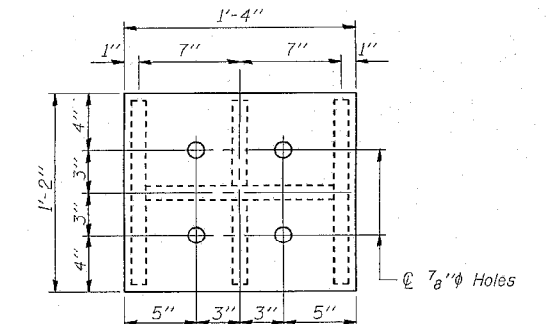
BOTTOM BEARING ASSEMBLY



SECTION THRU TFE

Note: The 1/8" TFE sheet shall be bonded directly to the top steel plate with a two-component, medium viscosity epoxy resin, conforming to the requirements of the Federal Specification MMM-A-134, Type I. The bond agent shall be applied on the full area of the contact surfaces.

Bonding of 1/8" TFE sheet during vulcanizing process will be permitted provided the process and method of adjusting assembly height is approved by the Engineer.

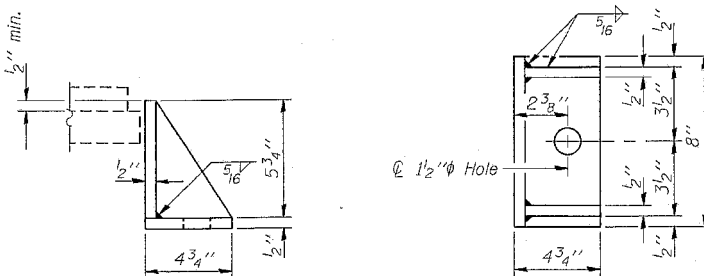


PLAN BOTTOM PLATE

BILL OF MATERIAL

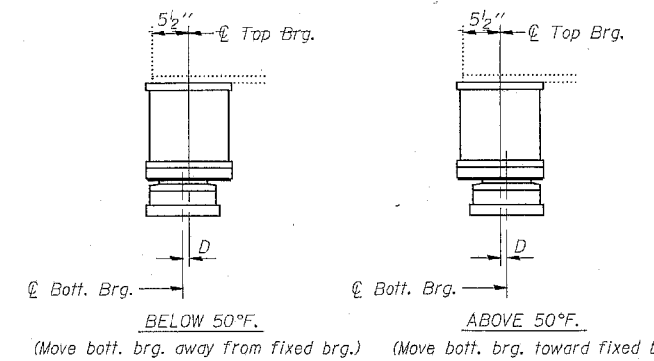
Item	Unit	Total
Elastomeric Bearing Assembly Type III	Each	16

SOUTH ABUTMENT
TYPE III BEARING REPLACEMENT
F.A.I. RT. 55 SEC. (54-4B)I-2
LOGAN COUNTY
STR. NO. 054-0048 (S.B.)
& 054-0049 (N.B.)



SIDE RETAINER

Equivalent rolled angle with stiffeners will be allowed in lieu of welded plates.



SETTING ANCHOR BOLTS AT EXP. BRG.

D=1/8" per each 100' of expansion for every 15° temp. change from the normal temp. of 50°F.

DESIGNED	CHM	JULY 8	19 94
CHECKED	KPS	EXAMINED	<i>John E. Adams</i>
DRAWN	Dierberl	PASSED	
CHECKED	CHM KPS		

STATE OF ILLINOIS
DEPARTMENT OF TRANSPORTATION

EXISTING PLANS - SN 054-0048 & 0049
(FOR INFORMATION ONLY)

SCALE: SHEET OF SHEETS STA. TO STA.

F.A.I. RTE.	SECTION	COUNTY	TOTAL SHEETS	SHEET NO.
55	(54-4) BP	LOGAN	14	14
			CONTRACT NO. 72K49	
		ILLINOIS	FED. AID PROJECT	