

F.A. RTE.	SECTION	COUNTY	TOTAL SHEETS	SHEET NO.
•	••	LASALLE	95	29
STA. 100+35.20 TO STA. 103+50				
FED. ROAD DIST. NO. ILLINOIS FED. AID PROJECT				

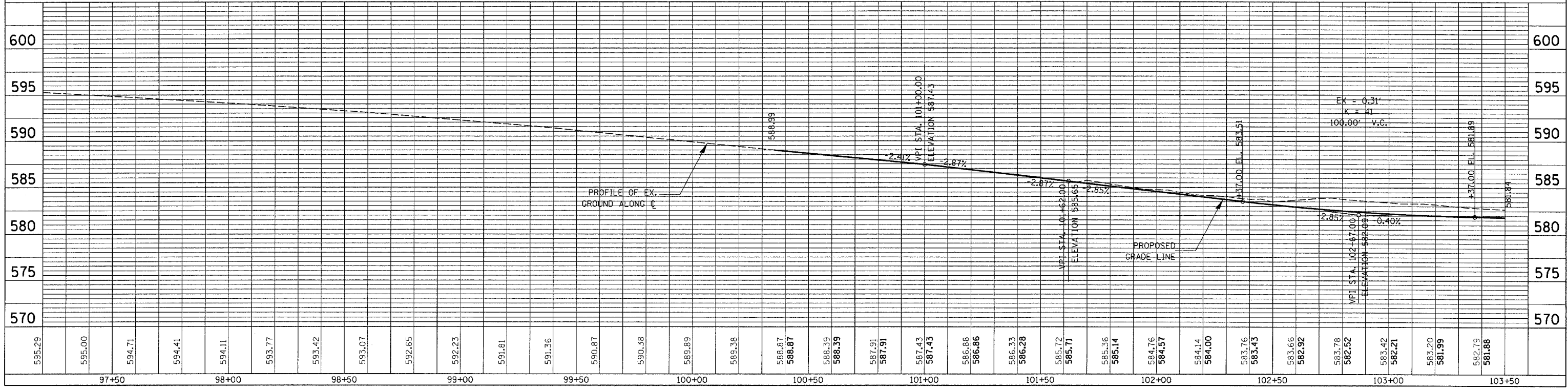
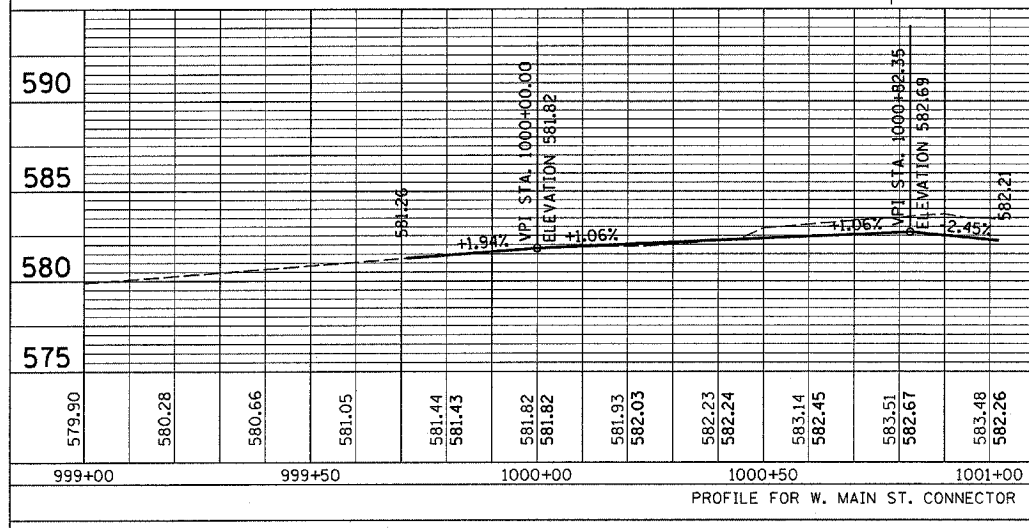
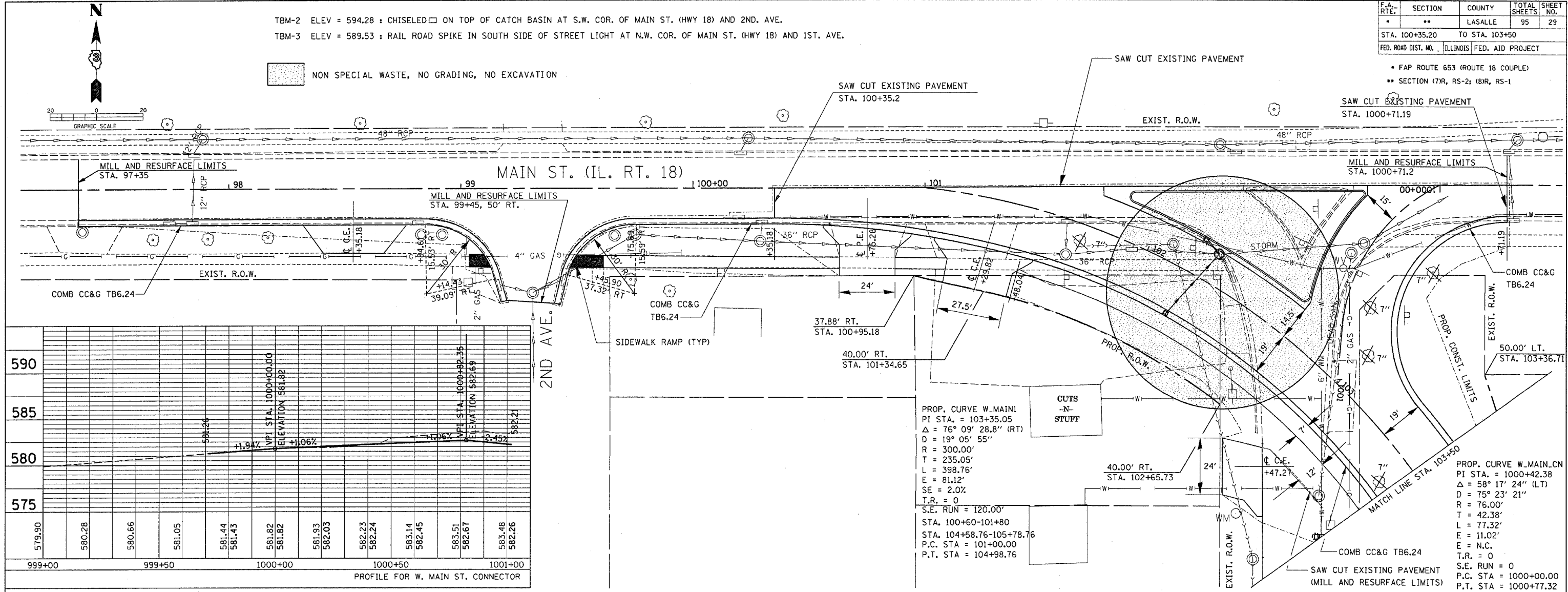
• FAP ROUTE 653 (ROUTE 18 COUPLE)  
 •• SECTION (7)R, RS-2; (8)R, RS-1

TBM-2 ELEV = 594.28 : CHISELED □ ON TOP OF CATCH BASIN AT S.W. COR. OF MAIN ST. (HWY 18) AND 2ND. AVE.  
 TBM-3 ELEV = 589.53 : RAIL ROAD SPIKE IN SOUTH SIDE OF STREET LIGHT AT N.W. COR. OF MAIN ST. (HWY 18) AND 1ST. AVE.

NON SPECIAL WASTE, NO GRADING, NO EXCAVATION

PLAN SURVEYED BY DATE  
 PLOTTED BY DATE  
 CHECKED BY DATE  
 NOTE BOOK NO. \_\_\_\_\_  
 RT. OF WAY CHECKED NO. \_\_\_\_\_  
 CADD FILE NAME \_\_\_\_\_

PROFILE SURVEYED BY DATE  
 PLOTTED BY DATE  
 CHECKED BY DATE  
 NOTE BOOK NO. \_\_\_\_\_  
 STRUCTURE NOTATIONS CHYD \_\_\_\_\_



PLAN & PROFILE SHEET FOR WEST MAINLINE-STA. 100 + 35.20 TO STA. 103 + 50