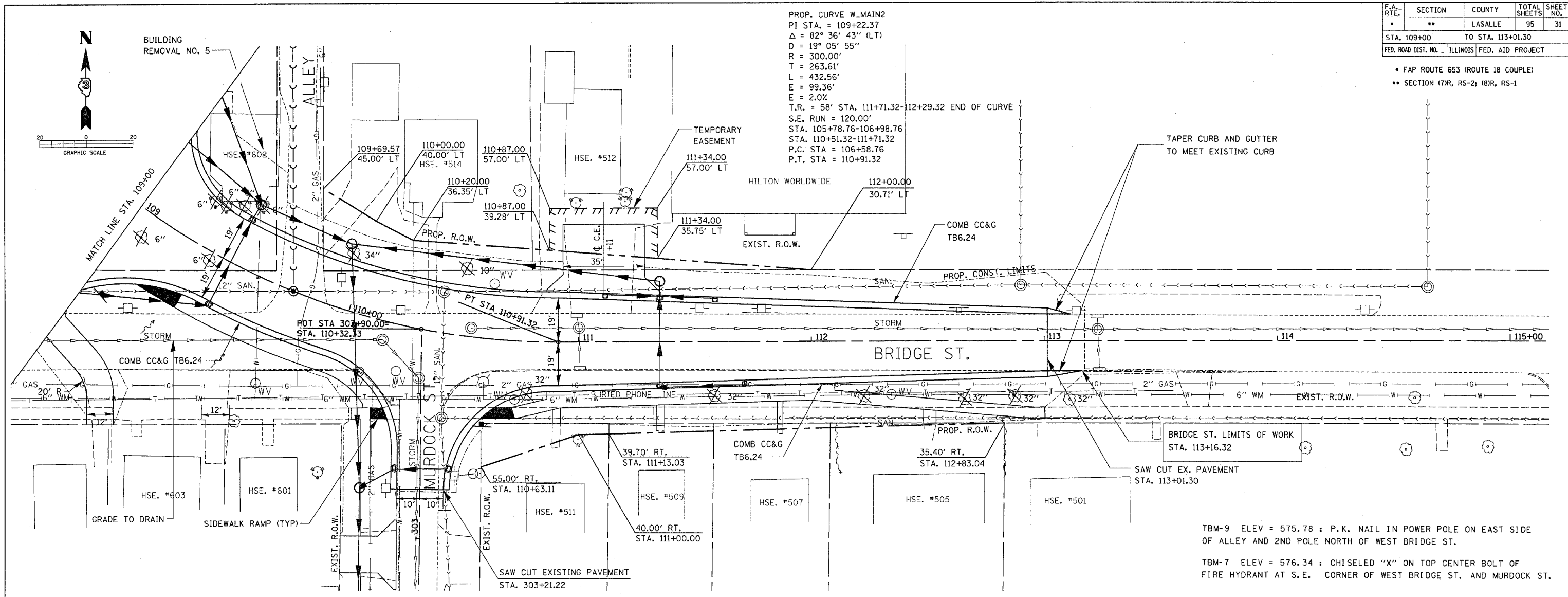


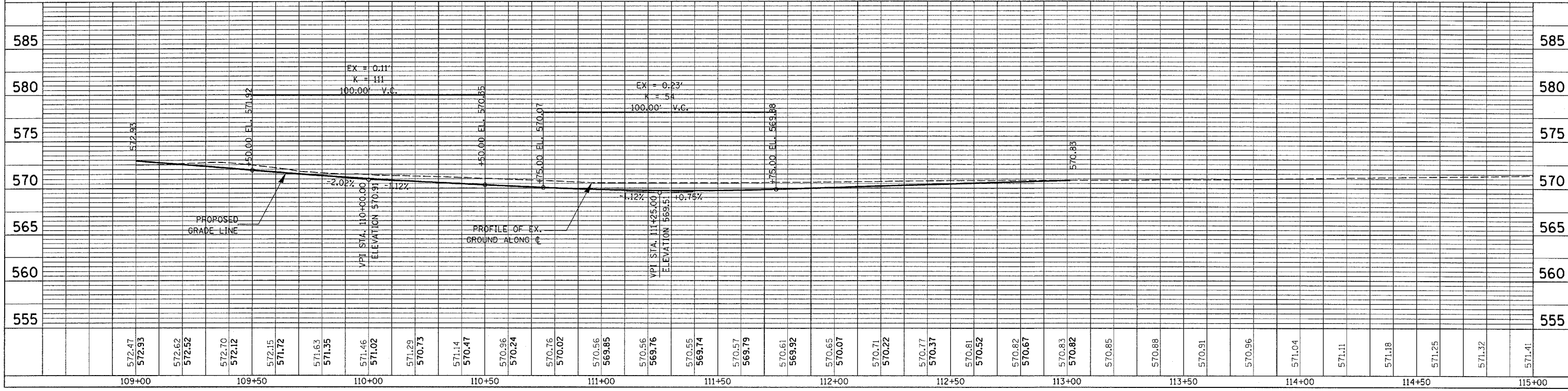
F.A. RTE.	SECTION	COUNTY	TOTAL SHEETS	SHEET NO.
•	••	LASALLE	95	31
STA. 109+00 TO STA. 113+01.30				
FED. ROAD DIST. NO. ILLINOIS FED. AID PROJECT				

- FAP ROUTE 653 (ROUTE 18 COUPLE)
- SECTION (7)R, RS-2; (8)R, RS-1

PROP. CURVE W.MAIN2
 PI STA. = 109+22.37
 $\Delta = 82^\circ 36' 43''$ (LT)
 $D = 19^\circ 05' 55''$
 $R = 300.00'$
 $T = 263.61'$
 $L = 432.56'$
 $E = 99.36'$
 $E = 2.0\%$
 $T.R. = 58'$ STA. 111+71.32-112+29.32 END OF CURVE
 $S.E. RUN = 120.00'$
 STA. 105+78.76-106+98.76
 STA. 110+51.32-111+71.32
 $P.C. STA = 106+58.76$
 $P.T. STA = 110+91.32$



TBM-9 ELEV = 575.78 : P.K. NAIL IN POWER POLE ON EAST SIDE OF ALLEY AND 2ND POLE NORTH OF WEST BRIDGE ST.
 TBM-7 ELEV = 576.34 : CHISELED "X" ON TOP CENTER BOLT OF FIRE HYDRANT AT S.E. CORNER OF WEST BRIDGE ST. AND MURDOCK ST.



PLAN & PROFILE SHEET FOR WEST MAINLINE-STA. 109+00 TO STA. 113+01.30

PLAN	SURVEYED	DATE
	PLOTTED	BY
	REVISIONS	
	NOTE BOOK	
	NO. OF SHEETS	
	CADD FILE NAME	

PROFILE	SURVEYED	DATE
	PLOTTED	BY
	REVISIONS	
	NOTE BOOK	
	NO. OF SHEETS	
	STRUCTURE NOTATIONS CHRD	