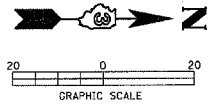


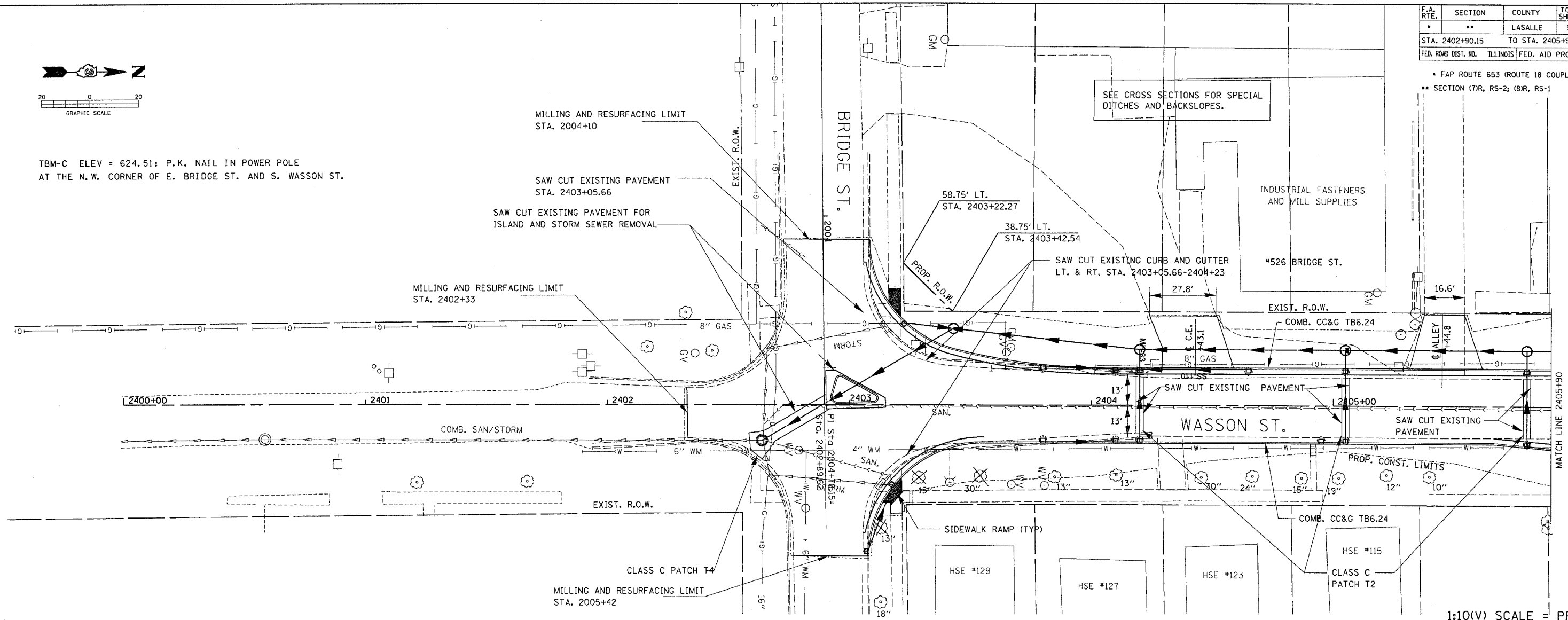
F.A. RTE.	SECTION	COUNTY	TOTAL SHEETS	SHEET NO.
63	**	LASALLE	95	33
STA. 2402+90.15		TO STA. 2405+90		
FED. ROAD DIST. NO.		ILLINOIS FED. AID PROJECT		

• FAP ROUTE 653 (ROUTE 18 COUPLE)  
 • SECTION (7)R, RS-2; (8)R, RS-1



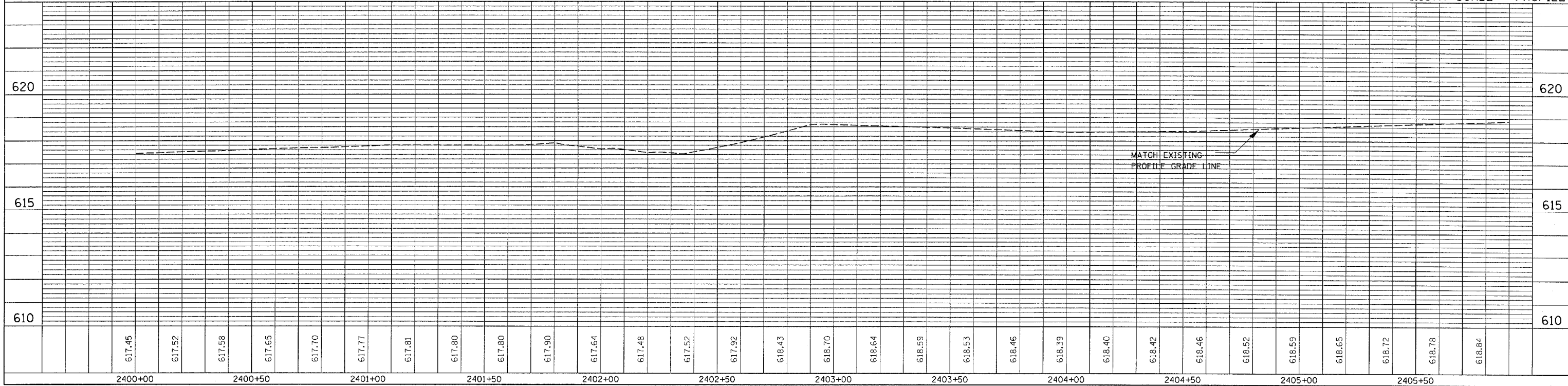
PLAN	DATE
SURVEYED	
PLOTTED	
NOTED	
BY	
NO.	

TBM-C ELEV = 624.51: P.K. NAIL IN POWER POLE  
 AT THE N.W. CORNER OF E. BRIDGE ST. AND S. WASSON ST.



1:10(V) SCALE = PROFILE

PROFILE	DATE
SURVEYED	
PLOTTED	
NOTED	
BY	
NO.	



**PLAN & PROFILE SHEET FOR WASSON ST. - STA. 2402+90.15 TO STA. 2405+90**