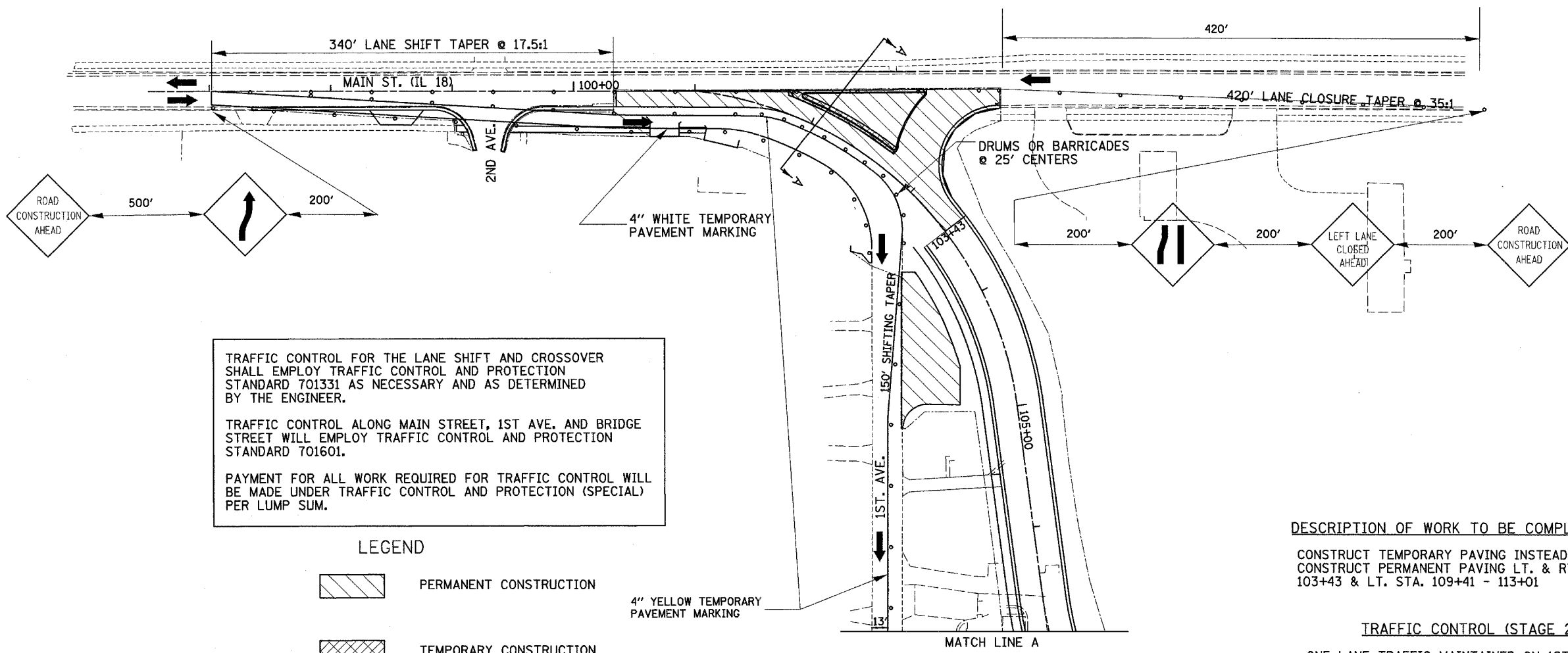
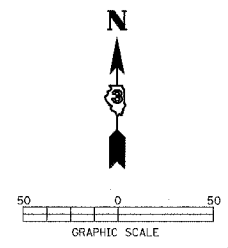


F.A. RTE.	SECTION	COUNTY	TOTAL SHEETS	SHEET NO.
•	**	LASALLE	95	37
STA. TO STA.				
FED. ROAD DIST. NO.		ILLINOIS	FED. AID PROJECT	
<ul style="list-style-type: none"> • FAP ROUTE 653 (ROUTE 18 COUPLE) • SECTION (7)R, RS-2; (8)R, RS-1 				



TRAFFIC CONTROL FOR THE LANE SHIFT AND CROSSOVER SHALL EMPLOY TRAFFIC CONTROL AND PROTECTION STANDARD 701331 AS NECESSARY AND AS DETERMINED BY THE ENGINEER.

TRAFFIC CONTROL ALONG MAIN STREET, 1ST AVE. AND BRIDGE STREET WILL EMPLOY TRAFFIC CONTROL AND PROTECTION STANDARD 701601.

PAYMENT FOR ALL WORK REQUIRED FOR TRAFFIC CONTROL WILL BE MADE UNDER TRAFFIC CONTROL AND PROTECTION (SPECIAL) PER LUMP SUM.

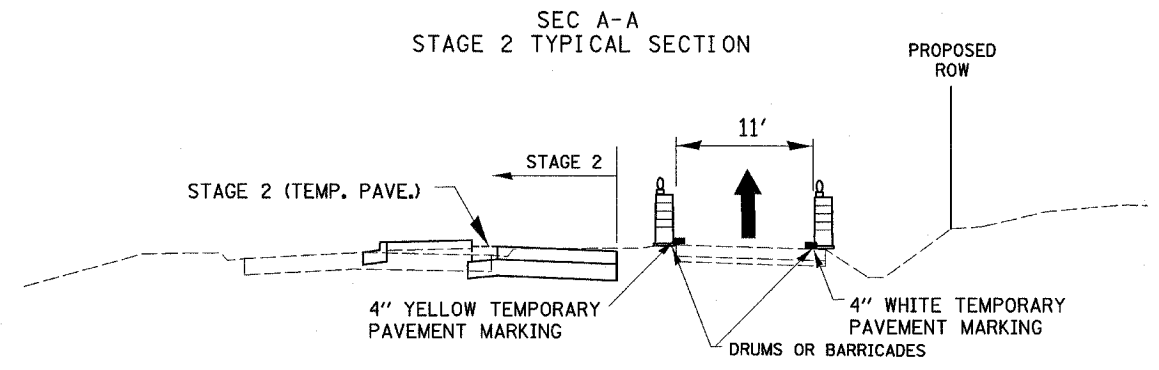
- LEGEND**
- PERMANENT CONSTRUCTION
 - TEMPORARY CONSTRUCTION
 - DRUM OR BARRICADE W/LIGHT
 - TRAFFIC FLOW ARROW

DESCRIPTION OF WORK TO BE COMPLETED (STAGE 2)

CONSTRUCT TEMPORARY PAVING INSTEAD OF ISLAND CURB LT. STA. 101+75 - 102+71
 CONSTRUCT PERMANENT PAVING LT. & RT. STA. 100+35 - 103+43 & LT. STA. 109+41 - 113+01

TRAFFIC CONTROL (STAGE 2)

ONE LANE TRAFFIC MAINTAINED ON 1ST. AVE. AND BRIDGE ST. USING STANDARD 701601
 WESTBOUND LEFT TURNS PROHIBITED AT MAIN ST. & 1ST. AVE.



STAGE 2 TRAFFIC CONTROL PLAN - WEST ALIGNMENT