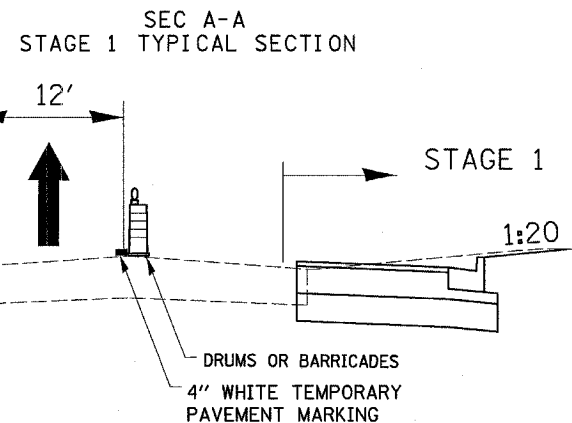
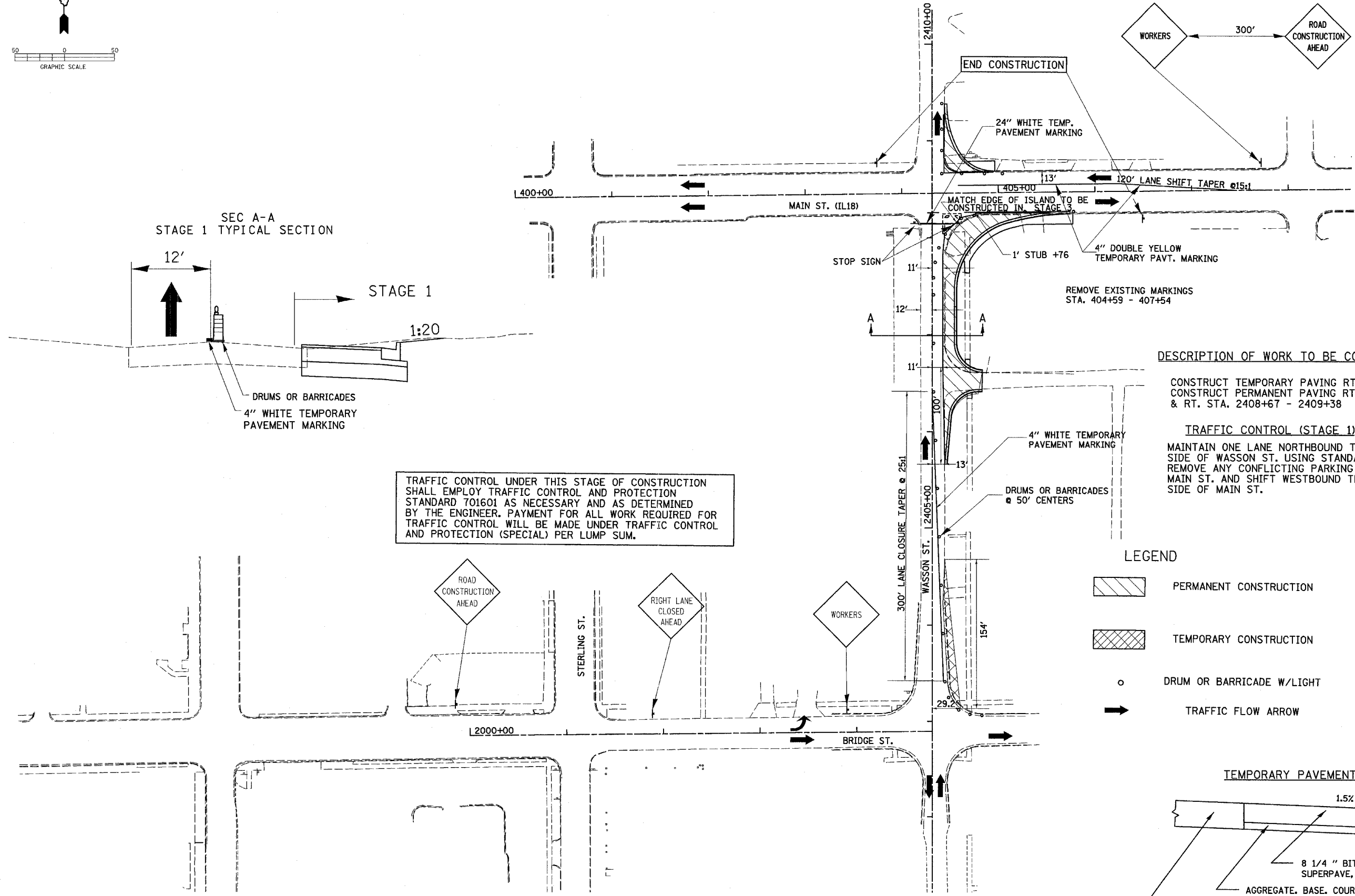
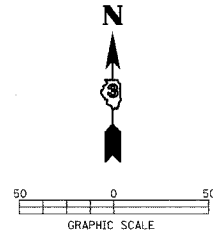


F.A. RTE.	SECTION	COUNTY	TOTAL SHEETS	SHEET NO.
•	••	LASALLE	95	43
STA. TO STA.		ILLINOIS FED. AID PROJECT		

• FAP ROUTE 653 (ROUTE 18 COUPLE)
 •• SECTION (7)R, RS-2; (8)R, RS-1

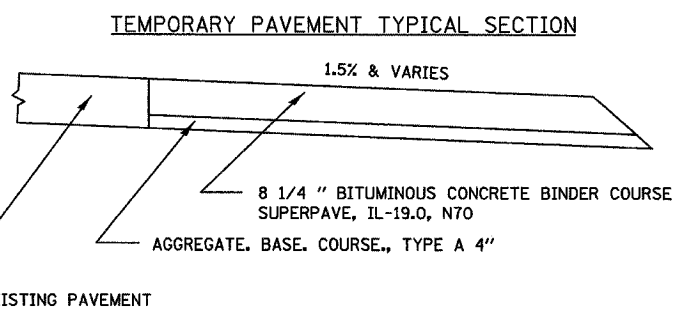


TRAFFIC CONTROL UNDER THIS STAGE OF CONSTRUCTION SHALL EMPLOY TRAFFIC CONTROL AND PROTECTION STANDARD 701601 AS NECESSARY AND AS DETERMINED BY THE ENGINEER. PAYMENT FOR ALL WORK REQUIRED FOR TRAFFIC CONTROL WILL BE MADE UNDER TRAFFIC CONTROL AND PROTECTION (SPECIAL) PER LUMP SUM.

DESCRIPTION OF WORK TO BE COMPLETED (STAGE 1)
 CONSTRUCT TEMPORARY PAVING RT. STA. 2403+14 - 2404+66
 CONSTRUCT PERMANENT PAVING RT. STA. 2405+66 - 2408+26 & RT. STA. 2408+67 - 2409+38

TRAFFIC CONTROL (STAGE 1)
 MAINTAIN ONE LANE NORTHBOUND TRAFFIC ON THE WEST SIDE OF WASSON ST. USING STANDARD 701601
 REMOVE ANY CONFLICTING PARKING ALONG WESTBOUND MAIN ST. AND SHIFT WESTBOUND TRAFFIC TO THE NORTH SIDE OF MAIN ST.

- LEGEND**
- PERMANENT CONSTRUCTION
 - TEMPORARY CONSTRUCTION
 - DRUM OR BARRICADE W/LIGHT
 - TRAFFIC FLOW ARROW



STAGE 1 TRAFFIC CONTROL PLAN - EAST ALIGNMENT