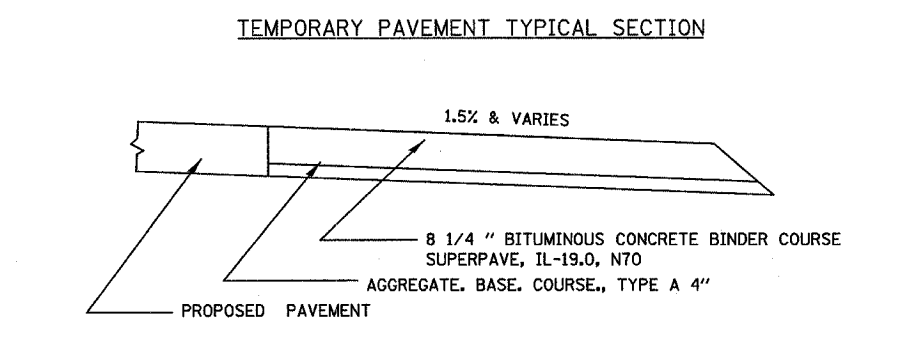
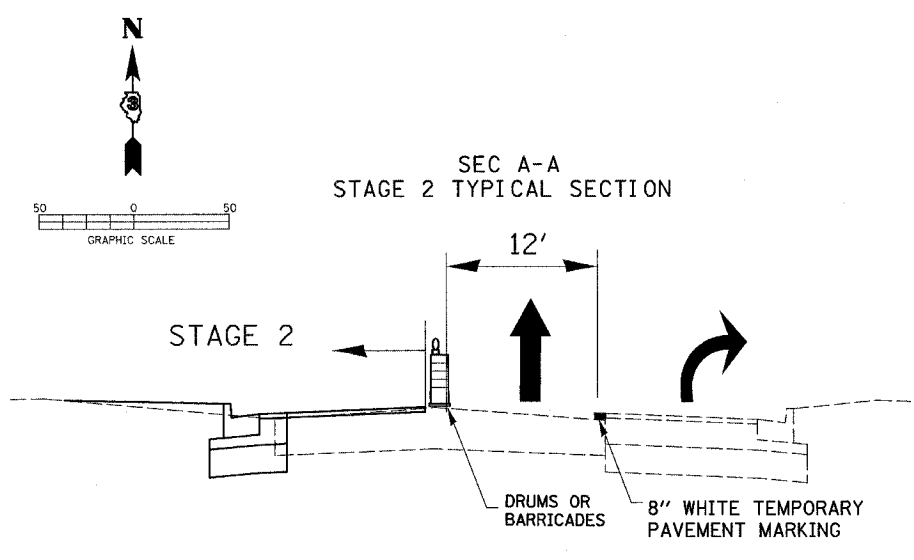
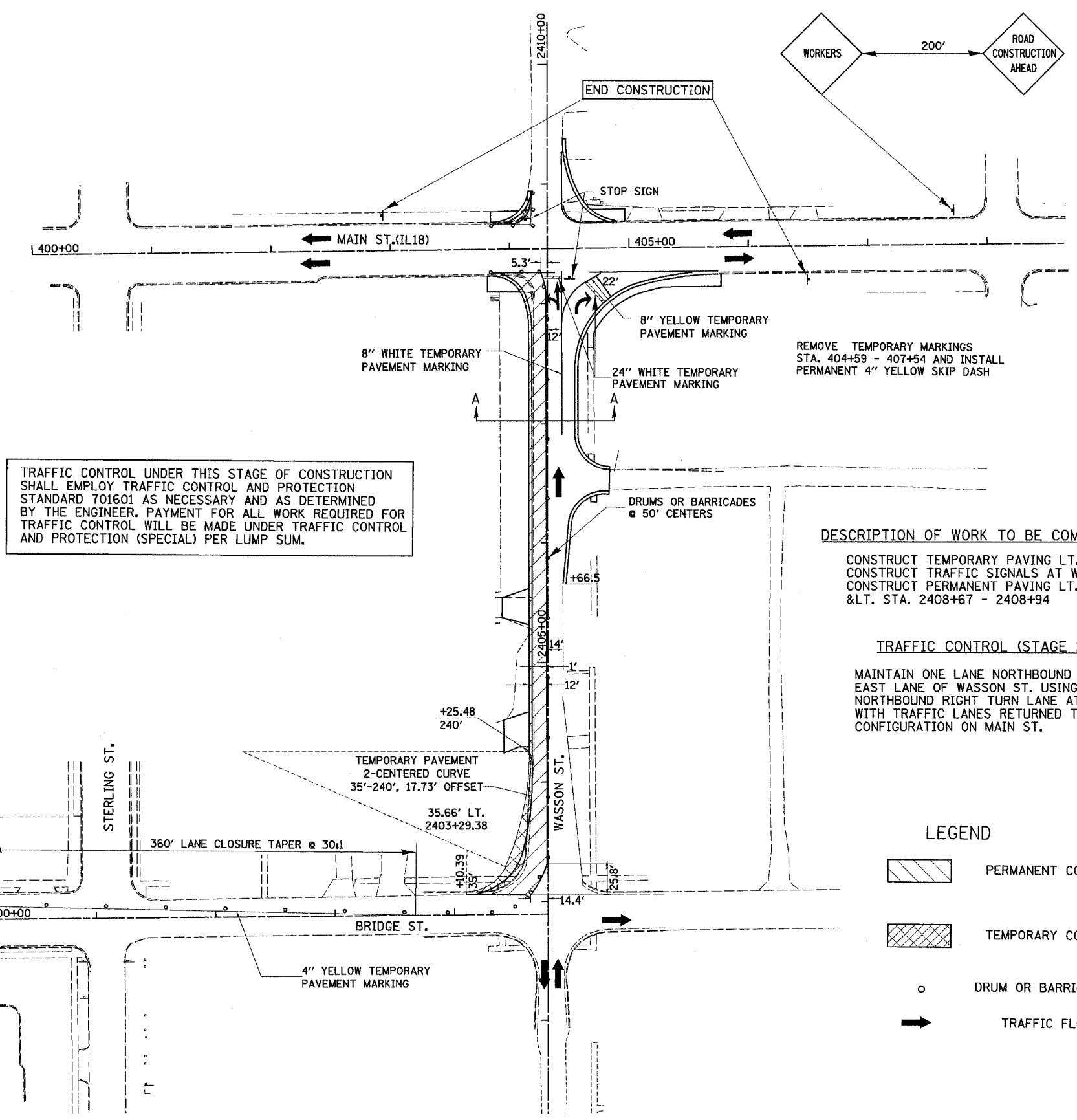
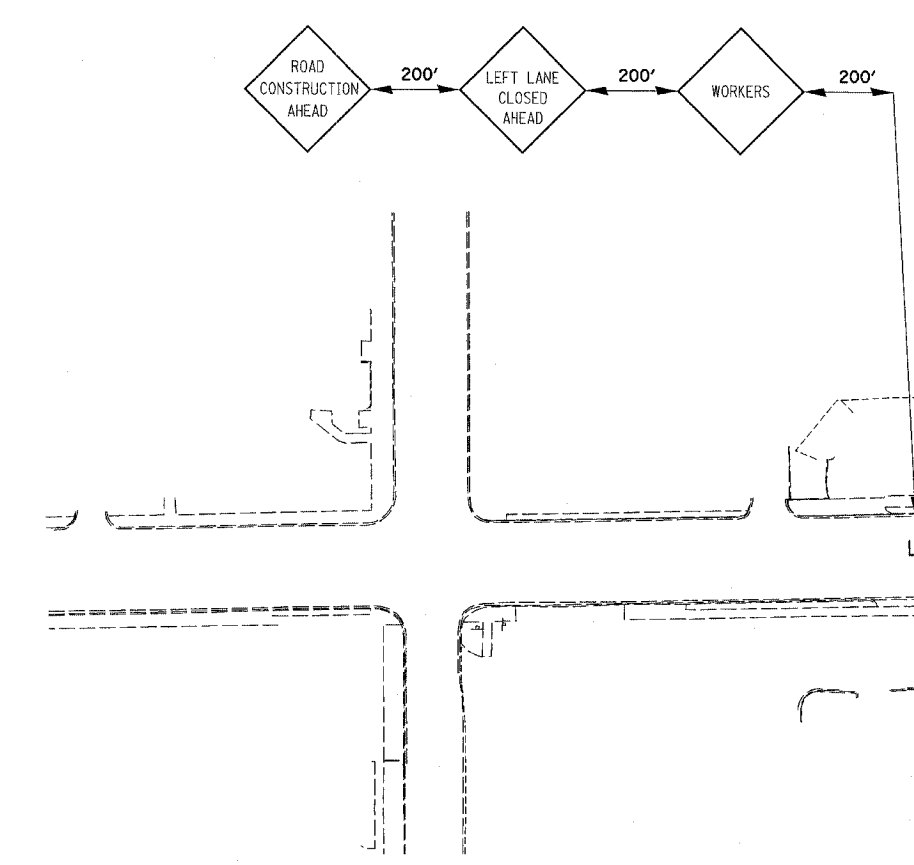


F.A. RTE.	SECTION	COUNTY	TOTAL SHEETS	SHEET NO.
*	**	LASALLE	95	44
STA.		TO STA.		
FED. ROAD DIST. NO. - ILLINOIS		FED. AID PROJECT		
* FAP ROUTE 653 (ROUTE 18 COUPLE)				
** SECTION (7)R, RS-2; (8)R, RS-1				



TRAFFIC CONTROL UNDER THIS STAGE OF CONSTRUCTION SHALL EMPLOY TRAFFIC CONTROL AND PROTECTION STANDARD 701601 AS NECESSARY AND AS DETERMINED BY THE ENGINEER. PAYMENT FOR ALL WORK REQUIRED FOR TRAFFIC CONTROL WILL BE MADE UNDER TRAFFIC CONTROL AND PROTECTION (SPECIAL) PER LUMP SUM.



DESCRIPTION OF WORK TO BE COMPLETED (STAGE 2)

CONSTRUCT TEMPORARY PAVING LT. STA. 2403+06 - 2404+10

CONSTRUCT TRAFFIC SIGNALS AT WASSON ST. & MAIN ST.

CONSTRUCT PERMANENT PAVING LT. STA. 2403+06 - 2408+26 & LT. STA. 2408+67 - 2408+94

TRAFFIC CONTROL (STAGE 2)

MAINTAIN ONE LANE NORTHBOUND TRAFFIC IN THE EAST LANE OF WASSON ST. USING STANDARD 701601 NORTHBOUND RIGHT TURN LANE AT MAIN ST. OPEN WITH TRAFFIC LANES RETURNED TO NORMAL CONFIGURATION ON MAIN ST.

