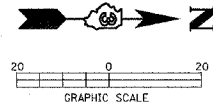


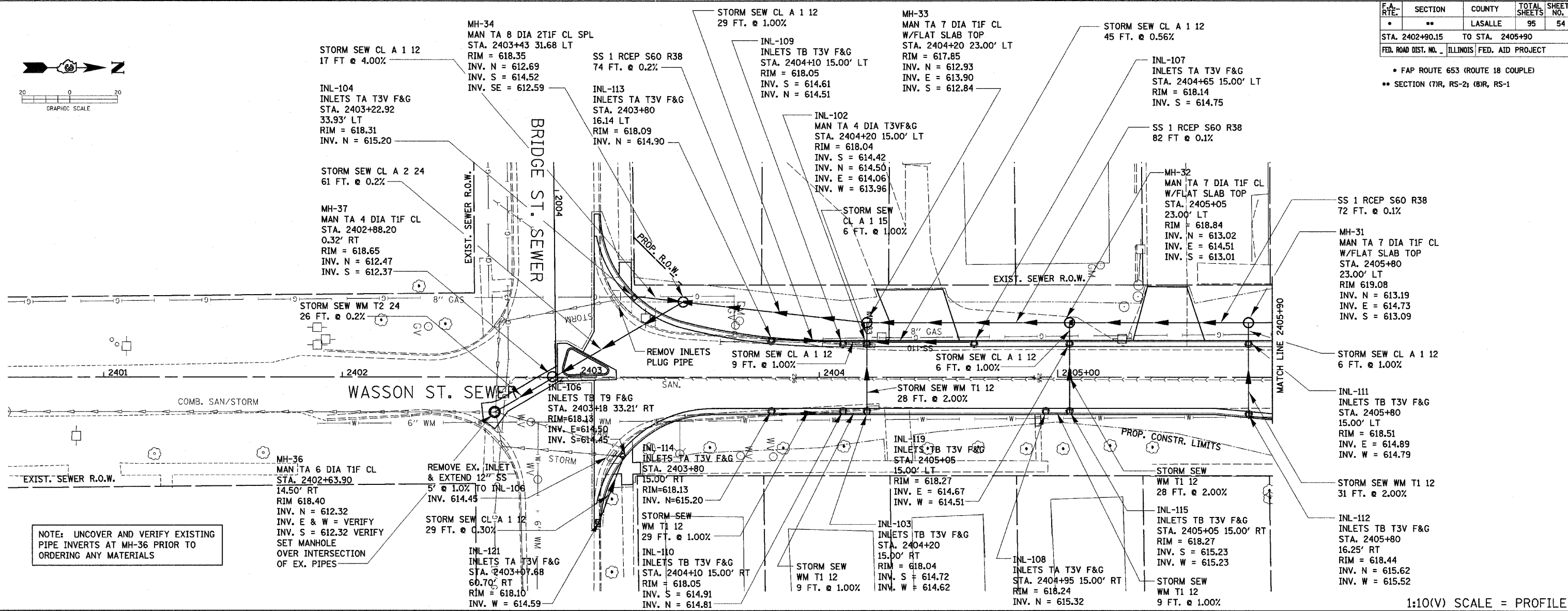
F.A. RTE.	SECTION	COUNTY	TOTAL SHEETS	SHEET NO.
*	**	LASALLE	95	54
STA. 2402+90.15		TO STA. 2405+90		
FED. ROAD DIST. NO. 1		ILLINOIS FED. AID PROJECT		

* FAP ROUTE 653 (ROUTE 18 COUPLE)
 ** SECTION (7)R, RS-2; (8)R, RS-1

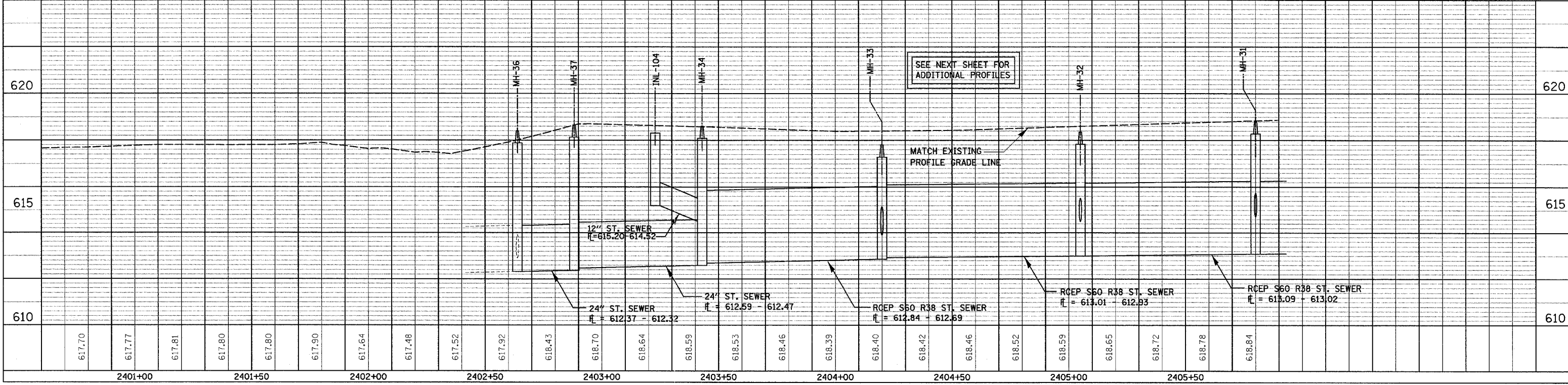


DATE	BY	REVISION

DATE	BY	REVISION



1:10(V) SCALE = PROFILE



DRAINAGE AND UTILITY SHEET FOR WASSON ST. SEWER - STA. 2402 + 90.15 TO STA. 2405 + 90