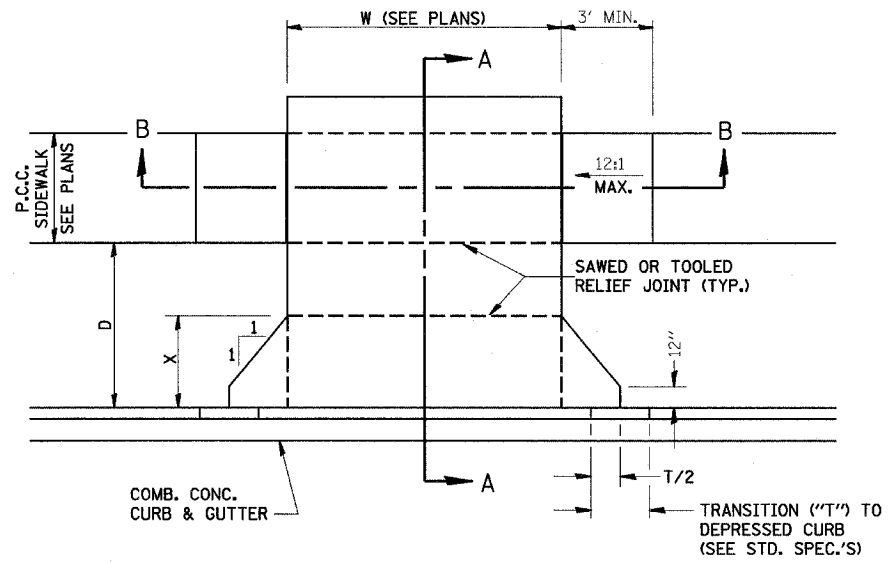
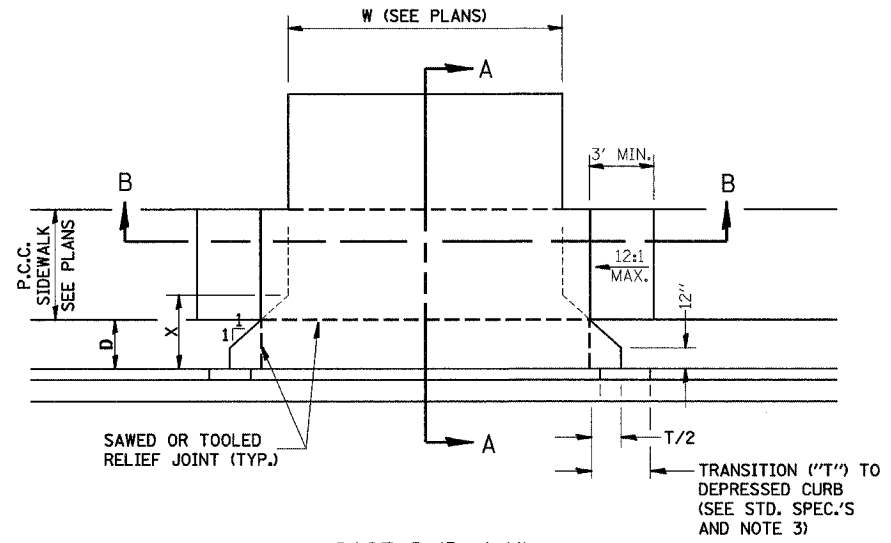


F.A. RTE.	SECTION	COUNTY	TOTAL SHEETS	SHEET NO.
•	••	LASALLE	95	73
STA.		TO STA.		
FED. ROAD DIST. NO.		ILLINOIS	FED. AID PROJECT	

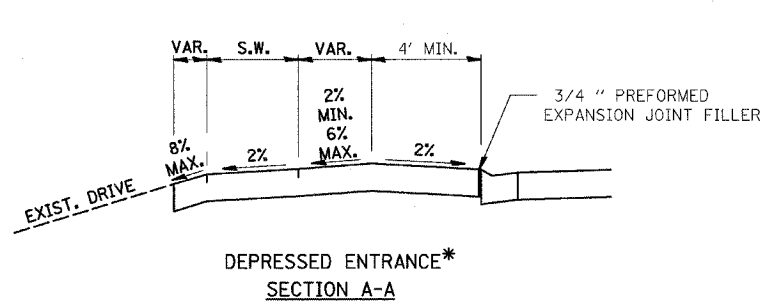
• FAP ROUTE 653 (ROUTE 18 COUPLED)
 •• SECTION (7)R, RS-2; (8)R, RS-1



CASE I (D ≥ X)

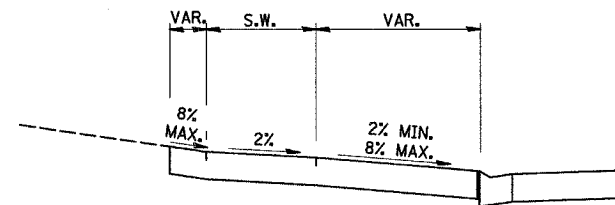


CASE I (D < X)



DEPRESSED ENTRANCE*
SECTION A-A

*(SEE X-SECTIONS FOR ENTRANCE PROFILE.)



ELEVATED ENTRANCE*
SECTION A-A

GENERAL NOTES:

1. X = 7' (NON-COMMERCIAL) X = 15' (COMMERCIAL)
2. COST OF EXPANSION JOINTS AND RELIEF JOINTS SHALL BE INCLUDED IN THE COST OF THE P.C.C. DRIVEWAY PAVEMENT.
3. AS THE DIMENSION "D" APPROACHES ZERO, THE TRANSITION TO DEPRESSED CURB SHALL BE NO STEEPER THAN 12:1

PCC URBAN ENTRANCES

423-1