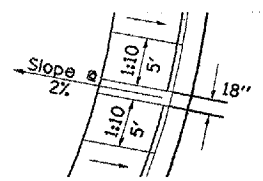


F.A.P. RTE.	SECTION	COUNTY	TOTAL SHEETS	SHEET NO.
313	103N-1,TS	WARREN		27
STA.		TO STA.		
FED. ROAD DIST. NO. 4 ILLINOIS FED. AID PROJECT				

CURB-CUT DETAIL

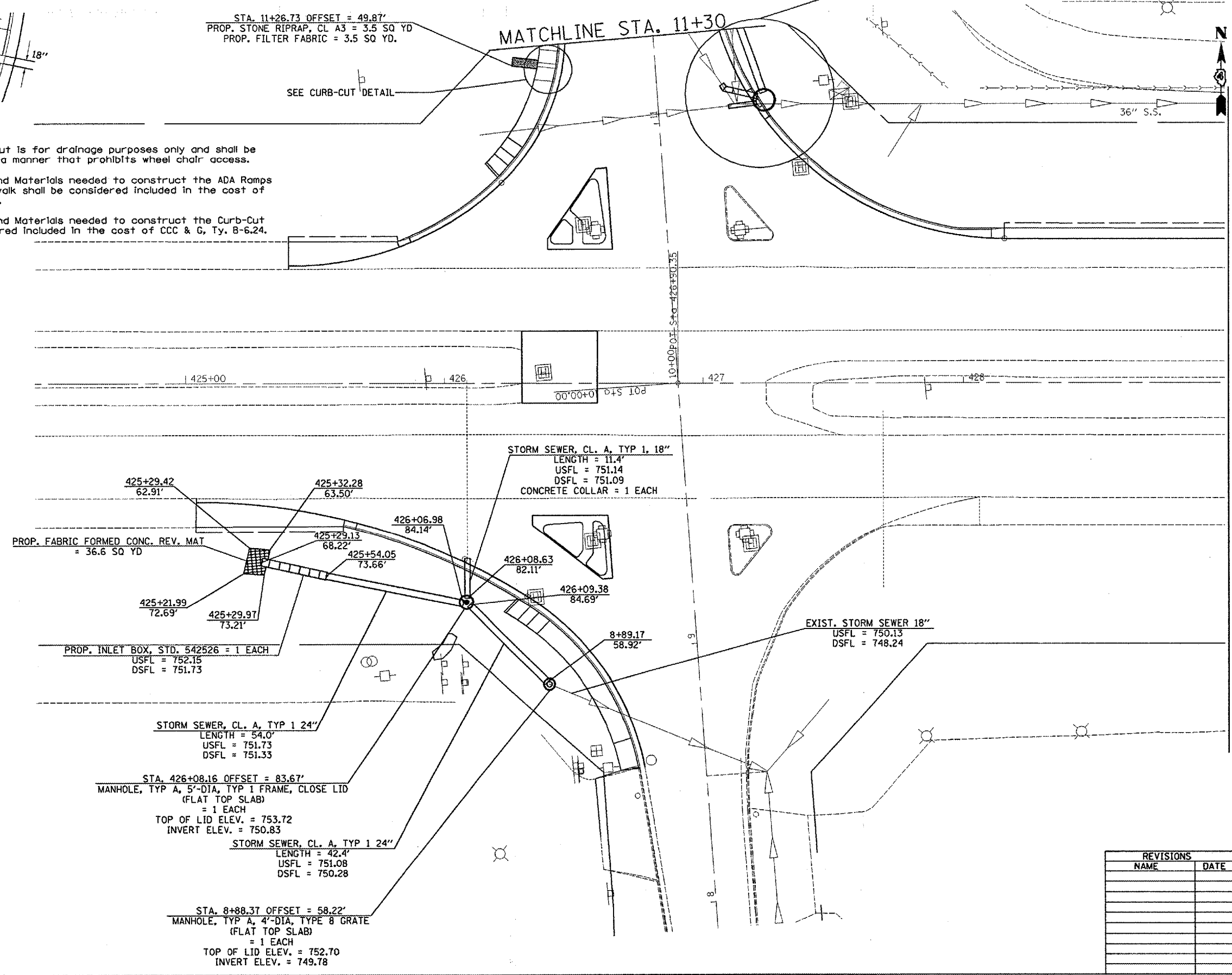
SEE DETAIL A ON DRAINAGE SHEET FOR 6TH ST.

STA. 11+26.73 OFFSET = 49.87'
 PROP. STONE RIPRAP, CL A3 = 3.5 SQ YD
 PROP. FILTER FABRIC = 3.5 SQ YD.



NOTES

1. This Curb-Cut is for drainage purposes only and shall be constructed in a manner that prohibits wheel chair access.
2. All Labor and Materials needed to construct the ADA Ramps within the sidewalk shall be considered included in the cost of PCC Sidewalk, 4".
3. All Labor and Materials needed to construct the Curb-Cut shall be considered included in the cost of CCC & G, Ty. B-6.24.



MATCHLINE STA. 429+00

REVISIONS	
NAME	DATE

ILLINOIS DEPARTMENT OF TRANSPORTATION
PROPOSED DRAINAGE DETAIL
INTERSECTION OF US 34 & 6TH ST.
 SCALE: VERT. 1" = 20' scale
 HORIZ. 1" = 20' scale
 DATE _____ DRAWN BY jaw
 CHECKED BY _____

PLOT DATE = 2/19/2008
 FILE NAME = c:\p\proj\warren\68356\prop\plan\shwa_6th.dgn
 PLOT SCALE = 48.0000 / IN.
 USER NAME = rnasellam