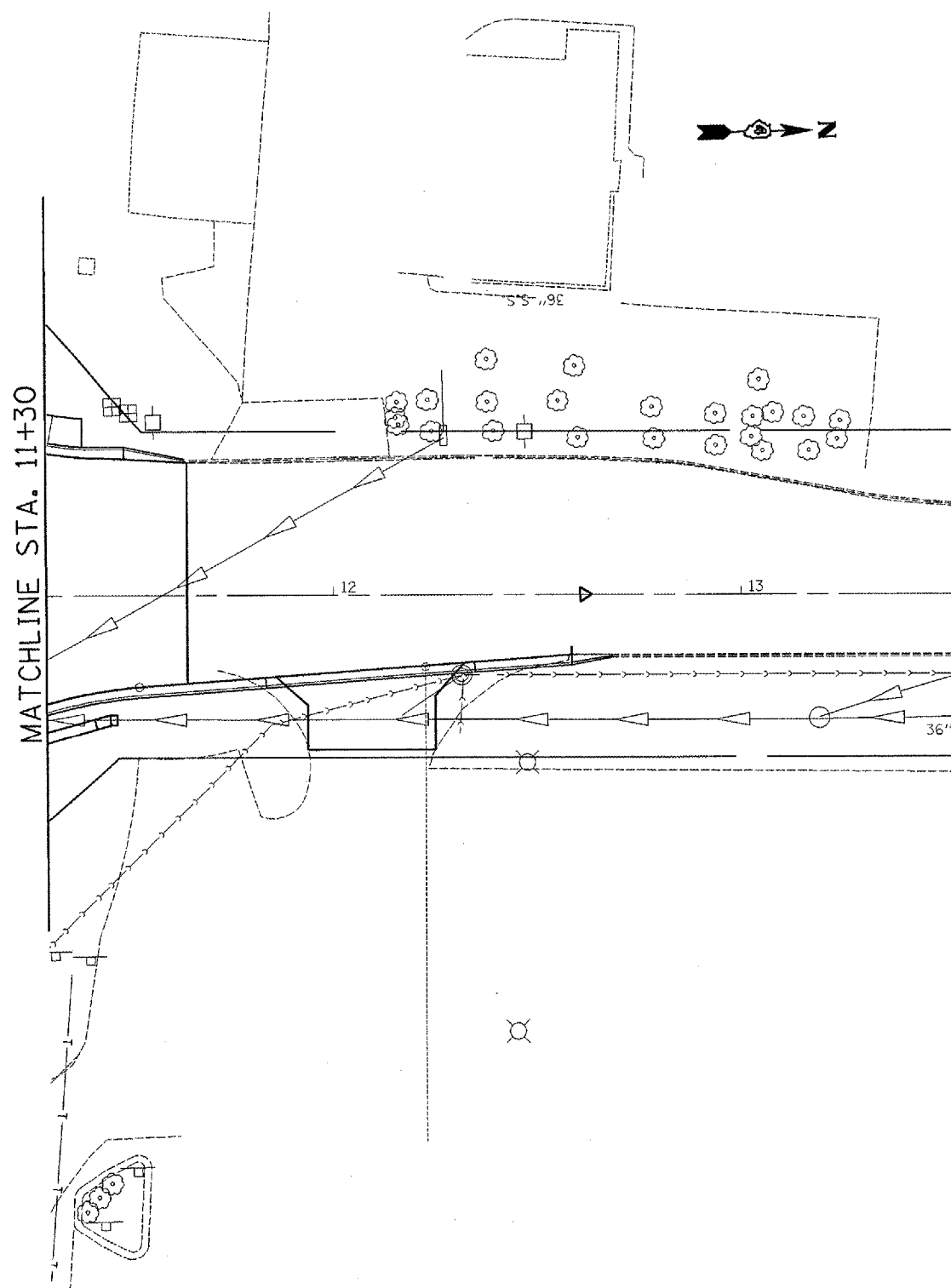
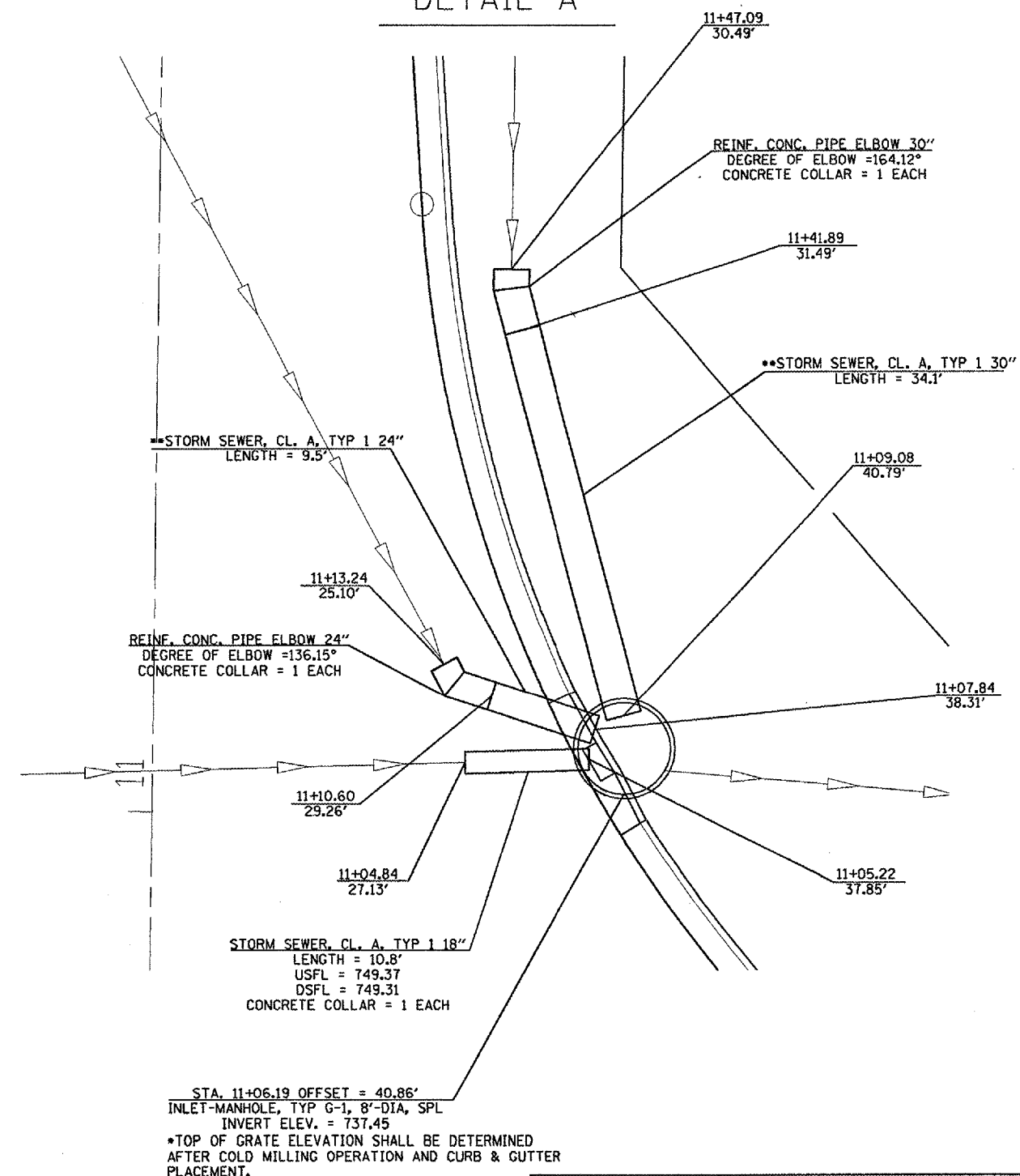


F.A.P. RTE.	SECTION	COUNTY	TOTAL SHEETS	SHEET NO.
313	103N-1,TS	WARREN		28
STA.		TO STA.		
FED. ROAD DIST. NO. 4		ILLINOIS FED. AID PROJECT		

DUE TO THE LACK OF SURVEY INFORMATION EXACT ELEVATIONS CANNOT BE DETERMINED. THE ELEVATION THE USFL OF THE 30" OUT GOING PIPE IS 738.45, AND IS THE CONTROLLING FACTOR FOR THE 8' INLET-MANHOLE. THE INVERT OF THE MANHOLE WAS DETERMINED BY ADDING 1 FOOT OF DEPTH TO THE EXISTING ELEVATION. CONCRETE MAY BE ADDED TO THE BOTTOM OF THE MANHOLE TO OBTAIN THE APPROPRIATE INVERT FLOWLINE.



DETAIL A



STA. 11+06.19 OFFSET = 40.86'
 INLET-MANHOLE, TYP G-1, 8'-DIA, SPL
 INVERT ELEV. = 737.45
 *TOP OF GRATE ELEVATION SHALL BE DETERMINED AFTER COLD MILLING OPERATION AND CURB & GUTTER PLACEMENT.

**FLOWLINE ELEVATIONS ARE TO BE DETERMINED IN THE FIELD.

REVISIONS	
NAME	DATE

ILLINOIS DEPARTMENT OF TRANSPORTATION
PROPOSED DRAINAGE DETAIL
 6TH ST.

SCALE: VERT. 1" = 20' scale
 HORIZ. 1" = 20' scale
 DATE

DRAWN BY jaw
 CHECKED BY