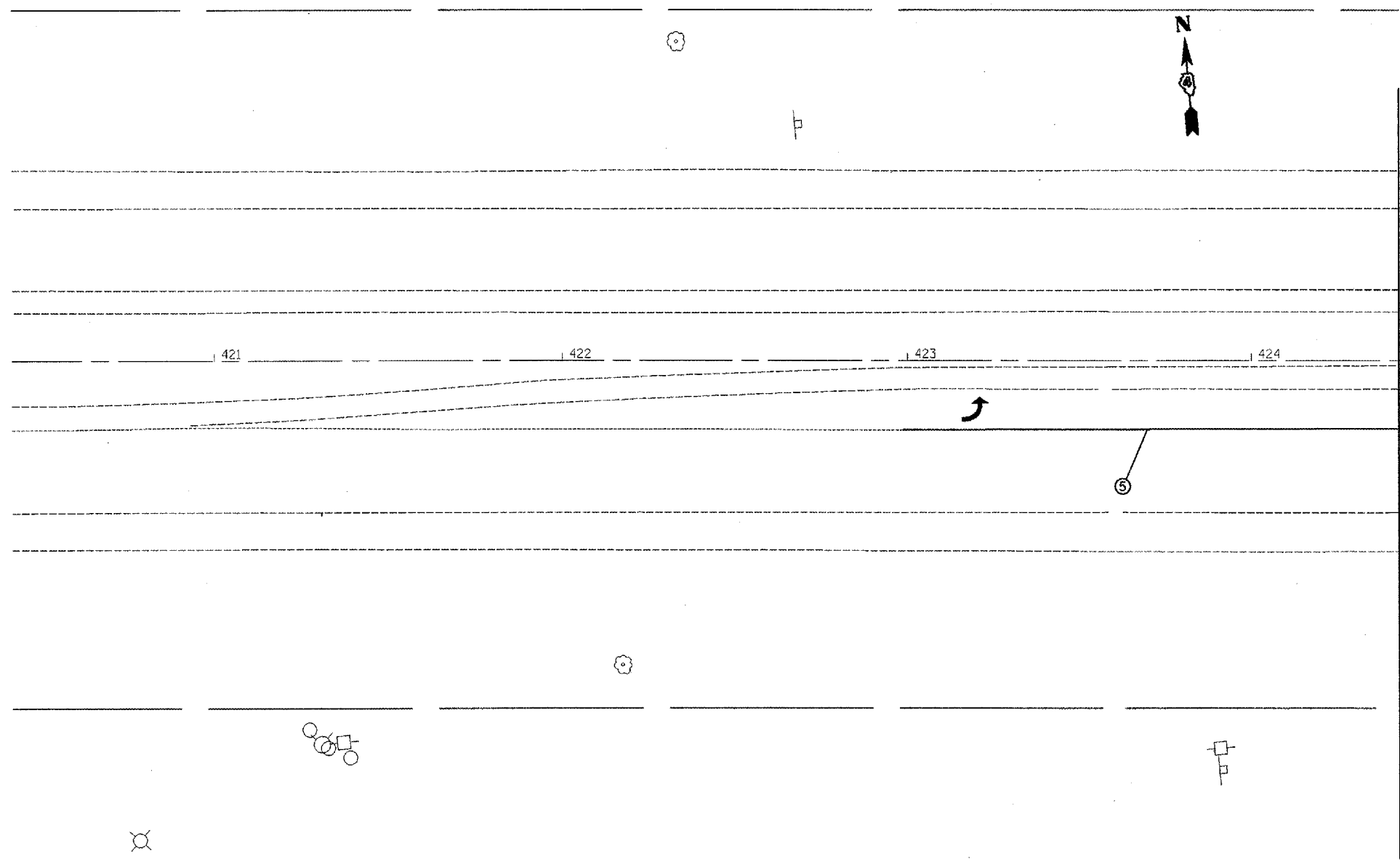


CONTRACT NO. 68356				
F.A.P. RTE.	SECTION	COUNTY	TOTAL SHEETS	SHEET NO.
313	103N-1.TS	WARREN		34
STA.		TO STA.		
FED. ROAD DIST. NO. 4		ILLINOIS	FED. AID PROJECT	



MATCHLINE STA. 424+42.31



PLOT DATE = 2/18/2006
 FILE NAME = c:\p\d\asata\monmout2\propplan\shs_6h.dgn
 PLOT SCALE = 48.0000' / IN.
 USER NAME = russellian

PAVEMENT MARKING LEGEND	
① 4" SOLID (YELLOW)	
② 4" SOLID (WHITE)	
③ (2) 6" CROSSWALK @ 6'-6" o.c. (WHITE)	
④ 4" SKIP DASH (WHITE)	
⑤ 8" SOLID (WHITE)	
⑥ 12" DIAGONAL (WHITE)	
⑦ 24" STOP BAR (WHITE)	
⑧ LETTERS AND SYMBOLS	
⑨ 4" SKIP DASH (YELLOW)	
⑩ 12" DIAGONAL (YELLOW)	
⑪ 4" DOUBLE (YELLOW)	
⑫ 6" SKIP DASH (WHITE)	

RAISED REFLECTIVE PAVEMENT MARKERS (RRPM)	
①	ONE-WAY CRYSTAL MARKER AT 80' CENTERS
②	ONE-WAY CRYSTAL MARKER AT 40' CENTERS
③	ONE-WAY CRYSTAL MARKER AT 20' CENTERS
④	ONE-WAY AMBER MARKER AT 40' CENTERS
⑤	TWO-WAY AMBER MARKER AT 40' CENTERS
	ONE-WAY CRYSTAL MARKER
	ONE-WAY AMBER MARKER

DELINEATORS	
■	DELINEATOR WITH TWO AMBER REFLECTORS
■	DELINEATOR WITH THREE AMBER REFLECTORS

RAISED REFLECTIVE PAVEMENT MARKERS (RRPM) - LAYOUT	
	▷ ONE WAY YELLOW R.R.P.M. ▷ ONE WAY WHITE R.R.P.M.

REVISIONS	
NAME	DATE

ILLINOIS DEPARTMENT OF TRANSPORTATION
PROPOSED PAVEMENT MARKINGS
US 34
STA 420+00 TO 424+00

SCALE: VERT. 1" = 20' scale
 HORIZ. DATE
 DRAWN BY jaw
 CHECKED BY