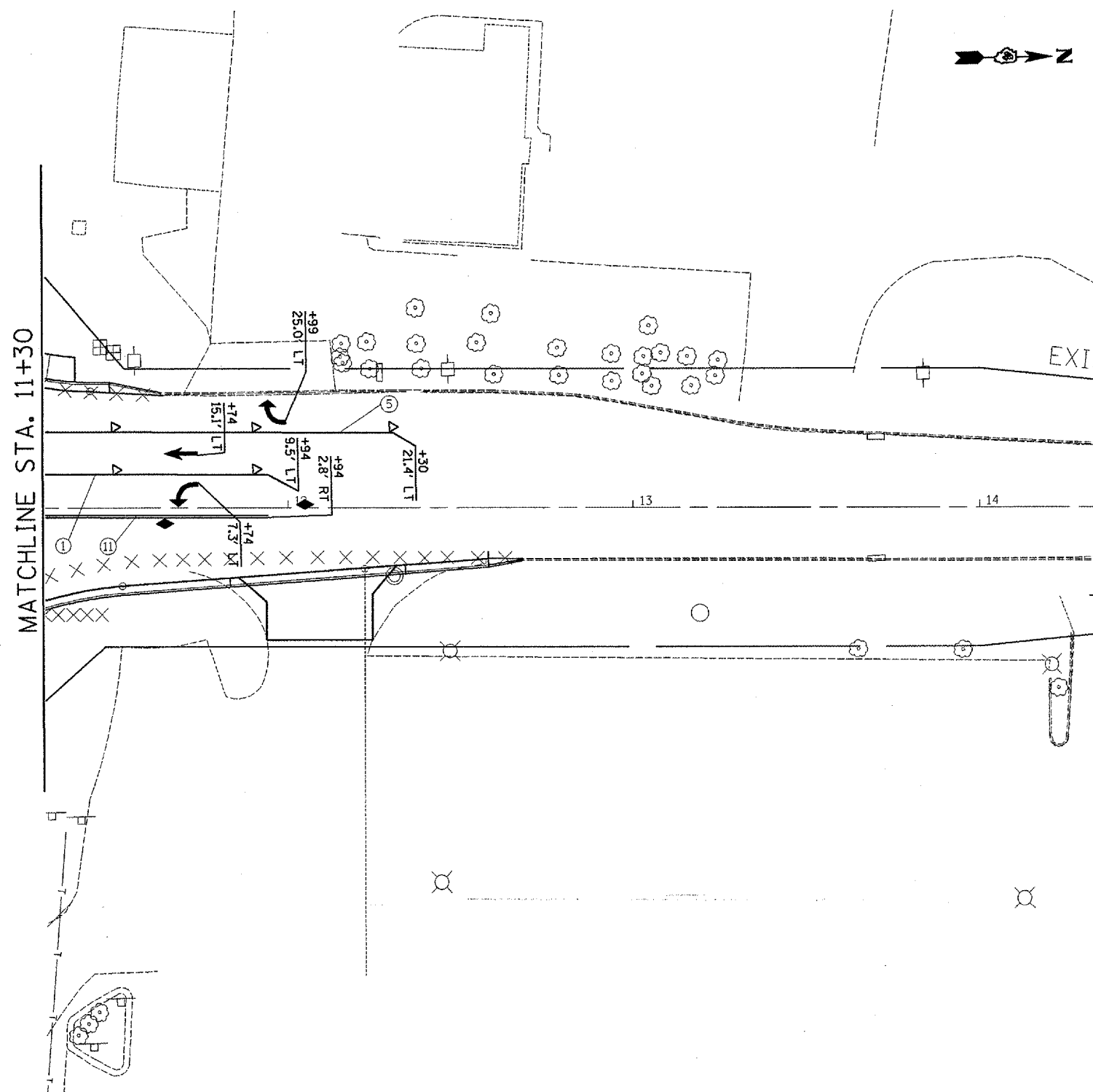
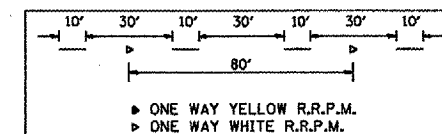


F.A.P. RTE.	SECTION	COUNTY	TOTAL SHEETS	SHEET NO.
313	103N-1,TS	WARREN		41
STA.		TO STA.		
FED. ROAD DIST. NO. 4		ILLINOIS	FED. AID PROJECT	



PAVEMENT MARKING LEGEND		RAISED REFLECTIVE PAVEMENT MARKERS (RRPM)	
①	4" SOLID (YELLOW)	1	ONE-WAY CRYSTAL MARKER AT 80' CENTERS
②	4" SOLID (WHITE)	2	ONE-WAY CRYSTAL MARKER AT 40' CENTERS
③	(2) 6" CROSSWALK @ 6'-6" o.c. (WHITE)	3	ONE-WAY CRYSTAL MARKER AT 20' CENTERS
④	4" SKIP DASH (WHITE)	4	ONE-WAY AMBER MARKER AT 40' CENTERS
⑤	8" SOLID (WHITE)	5	TWO-WAY AMBER MARKER AT 40' CENTERS
⑥	12" DIAGONAL (WHITE)		ONE-WAY CRYSTAL MARKER
⑦	24" STOP BAR (WHITE)		ONE-WAY AMBER MARKER
⑧	LETTERS AND SYMBOLS		
⑨	4" SKIP DASH (YELLOW)		
⑩	12" DIAGONAL (YELLOW)		
⑪	4" DOUBLE (YELLOW)		
⑫	6" SKIP DASH (WHITE)		



REVISIONS	
NAME	DATE

ILLINOIS DEPARTMENT OF TRANSPORTATION  
**PROPOSED PAVEMENT MARKINGS**  
**US 34**  
**STA 429+00 TO 435+20**

SCALE: VERT. 1" = 20' scale  
 HORIZ. DATE  
 DRAWN BY jaw  
 CHECKED BY

PLOT DATE = 2/10/2006  
 FILE SCALE = 40' = 1" / IN.  
 USER NAME = russellm