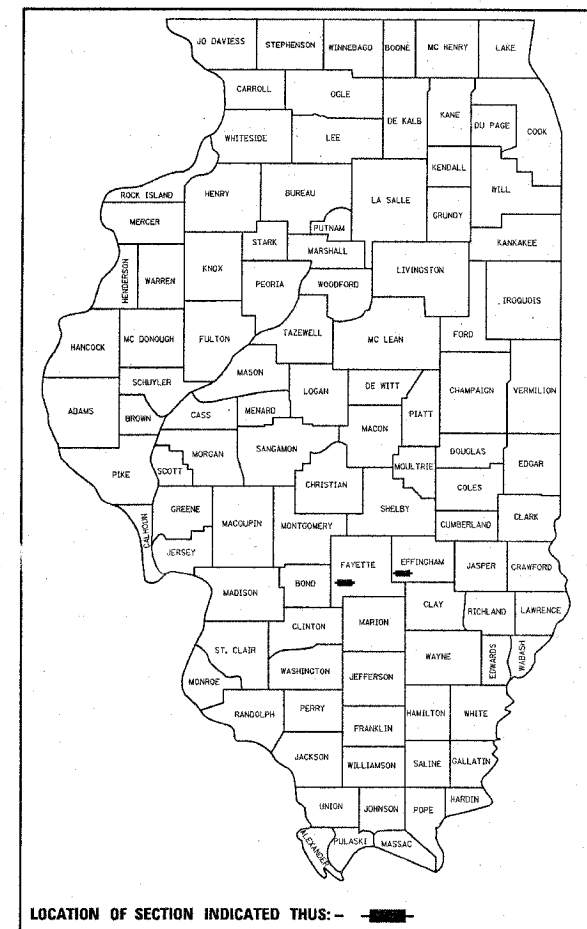


F.A. RTE.	SECTION	COUNTY	TOTAL SHEETS	SHEET NO.
*	**	***	5	1

- * FAU ROUTE 8413 & FAP ROUTE 2796
- ** D7 FLASHING BEACON 2006-1
- *** FAYETTE & EFFINGHAM

D-97-017-05



LOCATION OF SECTION INDICATED THUS: — ■ —

STATE OF ILLINOIS
DEPARTMENT OF TRANSPORTATION

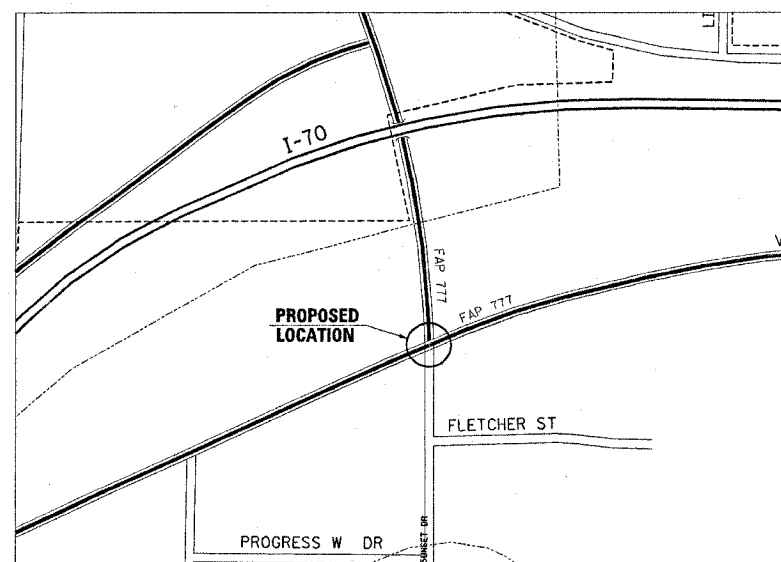
DIVISION OF HIGHWAYS

**PROPOSED
HIGHWAY PLANS**

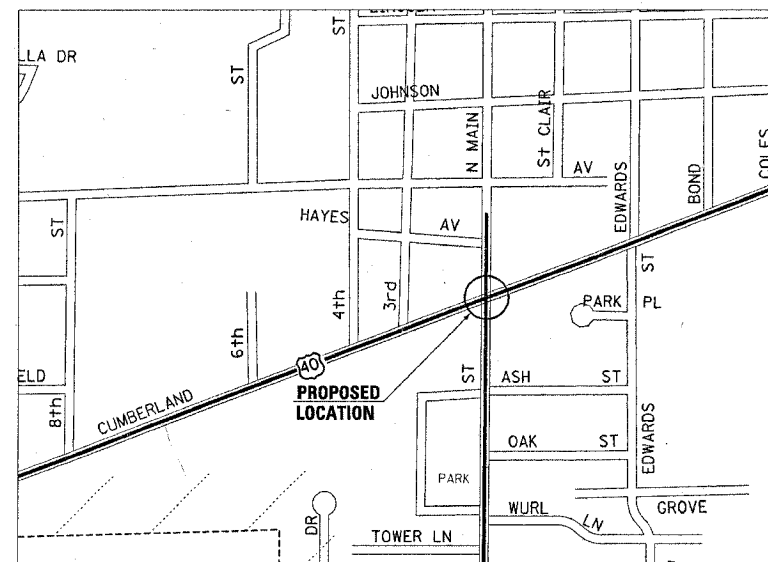
FAU ROUTE 8413 & FAS ROUTE 2796 (US 40 & US 40)
SECTION D7 FLASHING BEACON 2006-1
FAYETTE & EFFINGHAM COUNTIES
PROJECT HS-000S(479)

C-97-048-05

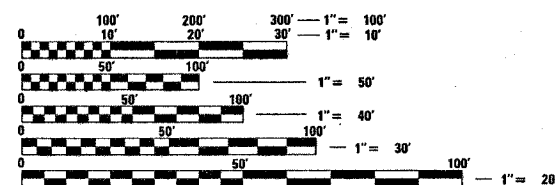
FOR INDEX OF SHEETS, SEE SHEET NO. 2



CITY OF VANDALIA



CITY OF ALTAMONT



FULL SIZE PLANS HAVE BEEN PREPARED USING STANDARD ENGINEERING SCALES. REDUCED SIZED PLANS WILL NOT CONFORM TO STANDARD SCALES. IN MAKING MEASUREMENTS ON REDUCED PLANS, THE ABOVE SCALES MAY BE USED.

J.U.L.I.E.
JOINT UTILITY LOCATION INFORMATION FOR EXCAVATION
1-800-892-0123

CONTRACT NO. 74089

STATE OF ILLINOIS
DEPARTMENT OF TRANSPORTATION
DIVISION OF HIGHWAYS

SUBMITTED FEB. 10, 2006
John W. Reed
DEPUTY DIRECTOR OF HIGHWAYS, REGION ENGINEER

March 24, 2006
Mike Hene
ENGINEER OF DESIGN AND ENVIRONMENT

March 24, 2006
Milton R. See, P.E.
DIRECTOR OF HIGHWAYS, CHIEF ENGINEER

PRINTED BY THE AUTHORITY
OF THE STATE OF ILLINOIS