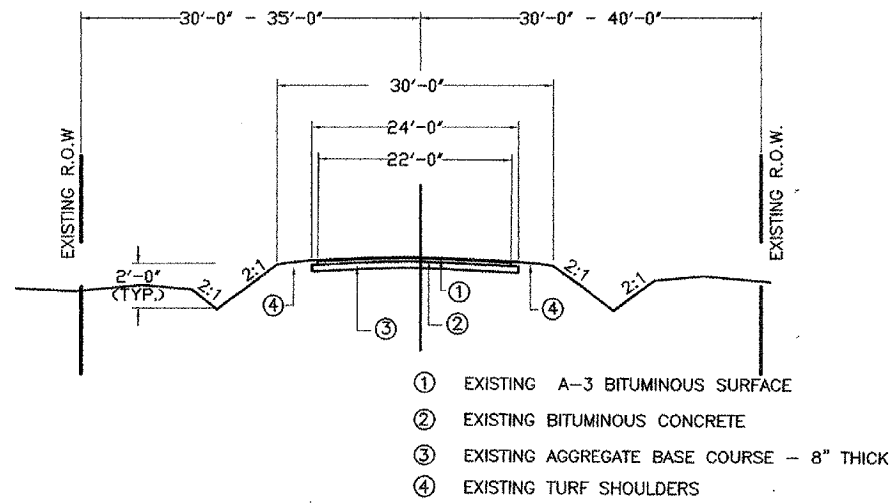


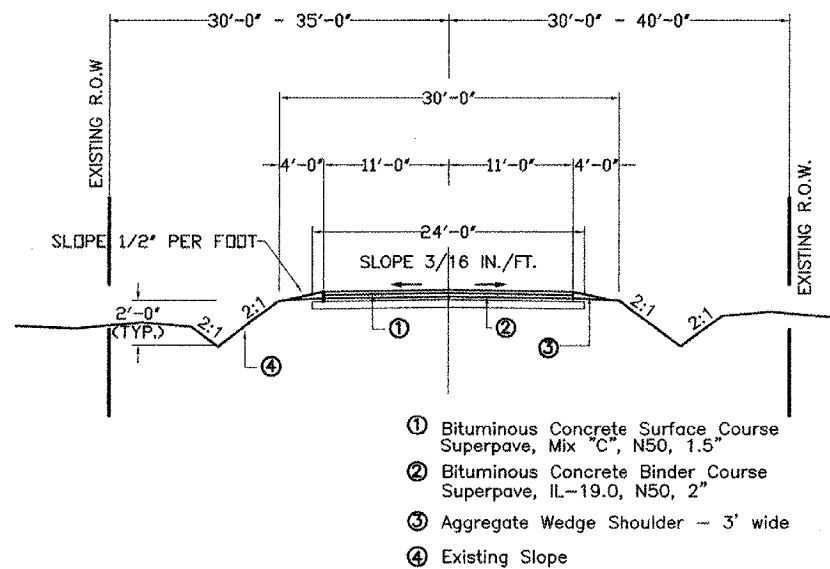


ROUTE	COUNTY	SECTION	SHEET/OF
FAS 1870	RANDOLPH	04-00035-06-RS	2/5

CONTRACT NO. 97268



EXISTING TYPICAL SECTION



PROPOSED TYPICAL SECTION

SUMMARY OF QUANTITIES

1000

Quantity	Unit	Item	Item Number
2,186	GALLON	BITUMINOUS MATERIALS (PRIME COAT)	40600100
147	SQ YD	BITUMINOUS SURFACE REMOVAL-BUTT JOINT	40600980
74	SQ YD	CLASS D PATCHES, TYPE II, 6 INCH	44201717
41	SQ YD	CLASS D PATCHES, TYPE III, 6 INCH	44201721
1,401	TON	AGGREGATE SHOULDERS, TYPE B	48101200
444	FOOT	PIPE CULVERT, TYPE 1, RCCP 24"	54200439
50	FOOT	PIPE CULVERTS, TYPE 1, REINFORCED CONCRETE, EQUIV ROUND-SIZE 42"	54206757
1	L SUM	MOBILIZATION	67100100
1	L SUM	TRAFFIC CONTROL AND PROTECTION, STANDARD 701201	70100450
1	L SUM	TRAFFIC CONTROL AND PROTECTION, STANDARD 701306	70100460
1,780	FOOT	SHORT-TERM PAVEMENT MARKING	70300100
44,214	FOOT	TEMPORARY PAVEMENT MARKING	70300200
44,214	FOOT	PAINT PAVEMENT MARKING - LINE 4"	78001110 *
46	TON	INCIDENTAL BITUMINOUS SURFACING, SUPERPAVE	XX004949
3,654	TON	BITUMINOUS CONCRETE SURFACE COURSE, SUPERPAVE, MIX "C", N50	X4066414
4,872	TON	BITUMINOUS CONCRETE BINDER COURSE, SUPERPAVE, IL-19.0, N50	X4066614

\* SPECIALTY ITEM

ROUTE	COUNTY	SECTION	SHEET/OF
FAS 1870	RANDOLPH	04-00035-06-RS	3/5

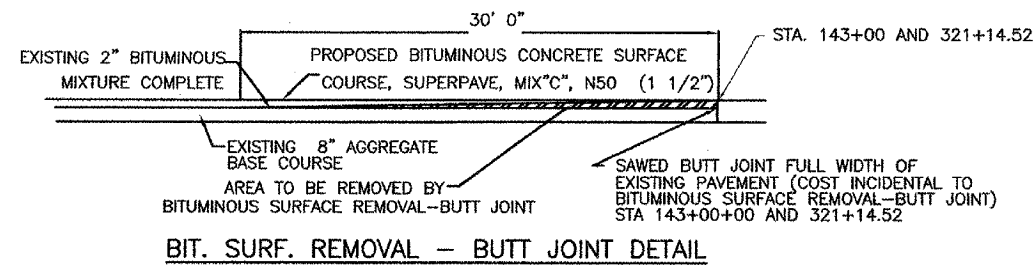
CONTRACT NO. 97268

PAVEMENT MARKING SCHEDULE				
TYPE	LOCATION	AREA	FEET	
WHITE EDGE LINE	LT.	143+00 TO 171+70.43 BK	2,870.43	
	LT.	171+91.96 AH TO 321+14.52	14,922.56	
	RT.	143+00 TO 171+70.43 BK	2,870.43	
	RT.	171+91.96 AH TO 321+14.52	14,922.56	
TOTAL WHITE LINES =			35,586	
YELLOW SKIP DASH	☉	143+00 to 165+00	550	
	☉	169+00 to 272+30	2,577	
	☉	273+75 to 287+50	344	
	☉	288+25 to 321+14.52	822	
CENTERLINE = 9,045 FT @ 25%			4,293	
YELLOW NO PASSING	RT.	159+75 to 169+00	1025	
	LT.	165+00 to 170+50	1025	
	RT.	268+25 to 273+75	813	
	LT.	272+30 to 277+75	575	
	RT.	284+80 to 288+25	620	
	LT.	287+50 to 293+35	630	
	RT.	310+75 to 315+00	860	
	LT.	316+00 to 320+10	820	
	TOTAL NO PASSING LINES =			4,335
	TOTAL YELLOW LINES =			8,628

### CROSSROAD PIPE SCHEDULE

STATION NO.	DIST. LT. OF ☉	FLOWLINE ELEV. LT.	DIST. RT. OF ☉	FLOWLINE ELEV. RT.	SKEW ANGLE	CULV SIZE	TOTAL PIPE LENGTH	EXISTING PIPE REMOVAL LENGTH	CLASS D PATCH
146+19	24'	92.00	24'	91.07	0	24" $\phi$ RCCP	48'	38'	10.2 SY
169+35	30'	93.70	26'	91.76	5' RA	24" $\phi$ RCCP	56'	52'	10.2 SY
199+83	35'	92.86	35'	93.82	60' LA	24" $\phi$ RCCP	70'	70'	20.4 SY
243+45	27'	90.82	21'	92.06	0	24" $\phi$ RCCP	48'	44'	11.1 SY
266+10	28'	92.18	26'	92.77	0	24" $\phi$ RCCP	54'	42'	10.2 SY
282+25	26'	86.36	30'	85.20	0	24" $\phi$ RCCP	56'	54'	10.2 SY
294+73	24'	91.02	26'	90.28	23' RA	42" EQUIV RCCP	50'	42'	20.9 SY
299+30	26'	89.86	26'	86.79	0	24" $\phi$ RCCP	52'	52'	10.2 SY
304+80	30'	90.09	30'	89.36	28' LA	24" $\phi$ RCCP	60'	50'	11.6 SY

NOTE: DISTANCE RIGHT AND LEFT OF CENTERLINE ON SKEWED CULVERTS IS MEASURED ALONG THE SKEW

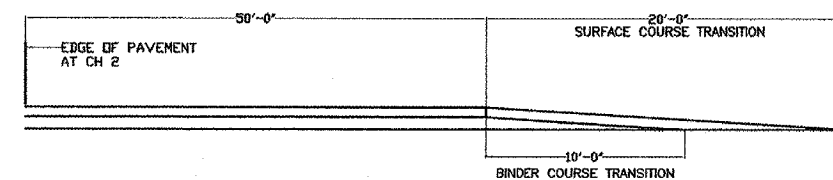
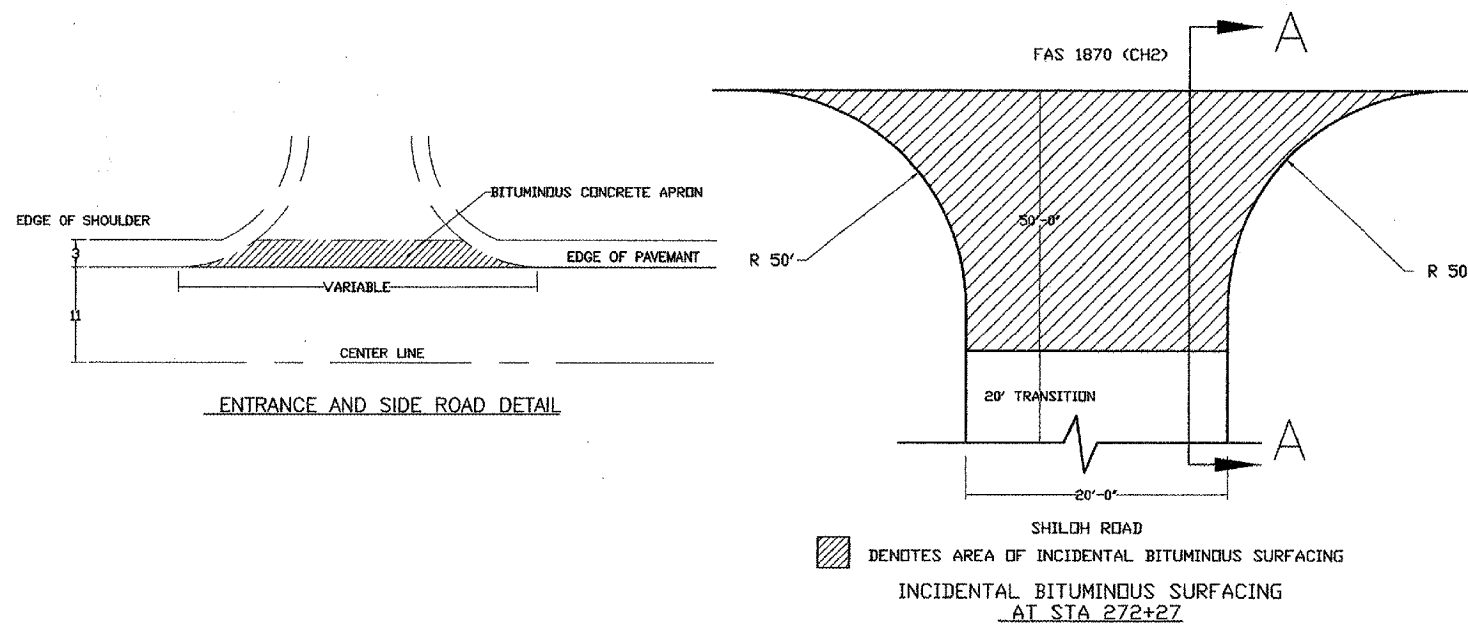


GENERAL NOTES;

1. BITUMINOUS MATERIALS (PRIME COAT) SHALL BE APPLIED AT THE RATE OF 0.05 GALLON PER SQUARE YARD. EMULSIFIED ASPHALT SHALL BE USED.

MIXTURE REQUIREMENTS - SUPERPAVE PROJECT

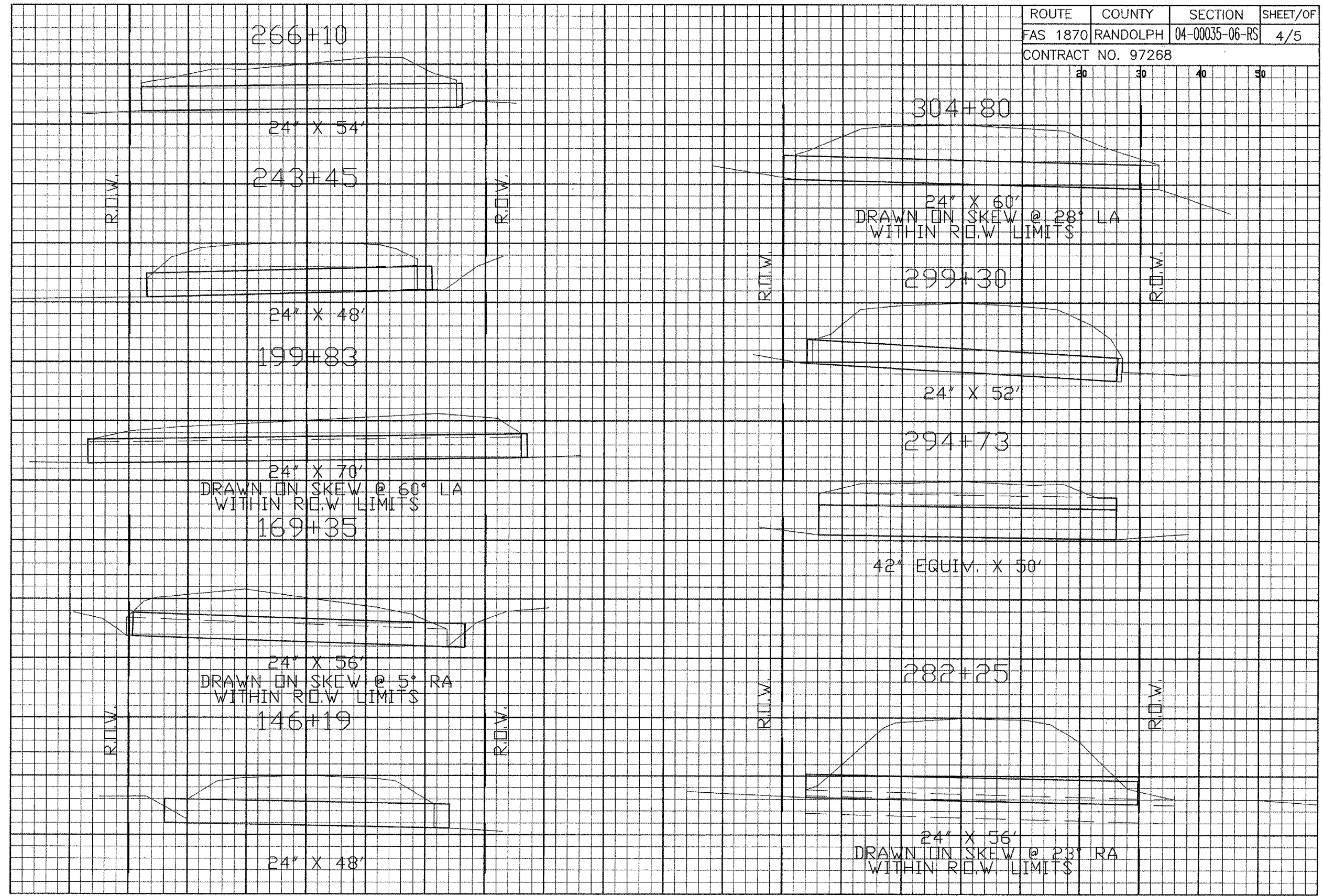
MIXTURE USE	SURFACE	BINDER	INC. BIT. SURFACING
AC/PG	PG 64-22	PG 64-22	PG 64-22
RAP % (MAX)	0	0	0
DESIGN AIR VOIDS	4.0% @ Ndes=50	4.0% @ Ndes=50	4.0% @ Ndes=50
MIX COMPOSITION (GRADATION MIXTURE)		IL 19.0	
FRICTION AGG	MIXTURE C		MIXTURE C
MIXTURE WEIGHT	112 LB/SY/IN	112 LB/SY/IN	112 LB/SY/IN



SECTION A-A

50 40 30 20 10 0 10 20 30 40 50 50 40 30 20 10 0 10 20 30 40 50

ROUTE	COUNTY	SECTION	SHEET/OF
FAS 1870	RANDOLPH	04-00035-06-RS	4/5
CONTRACT NO. 97268			

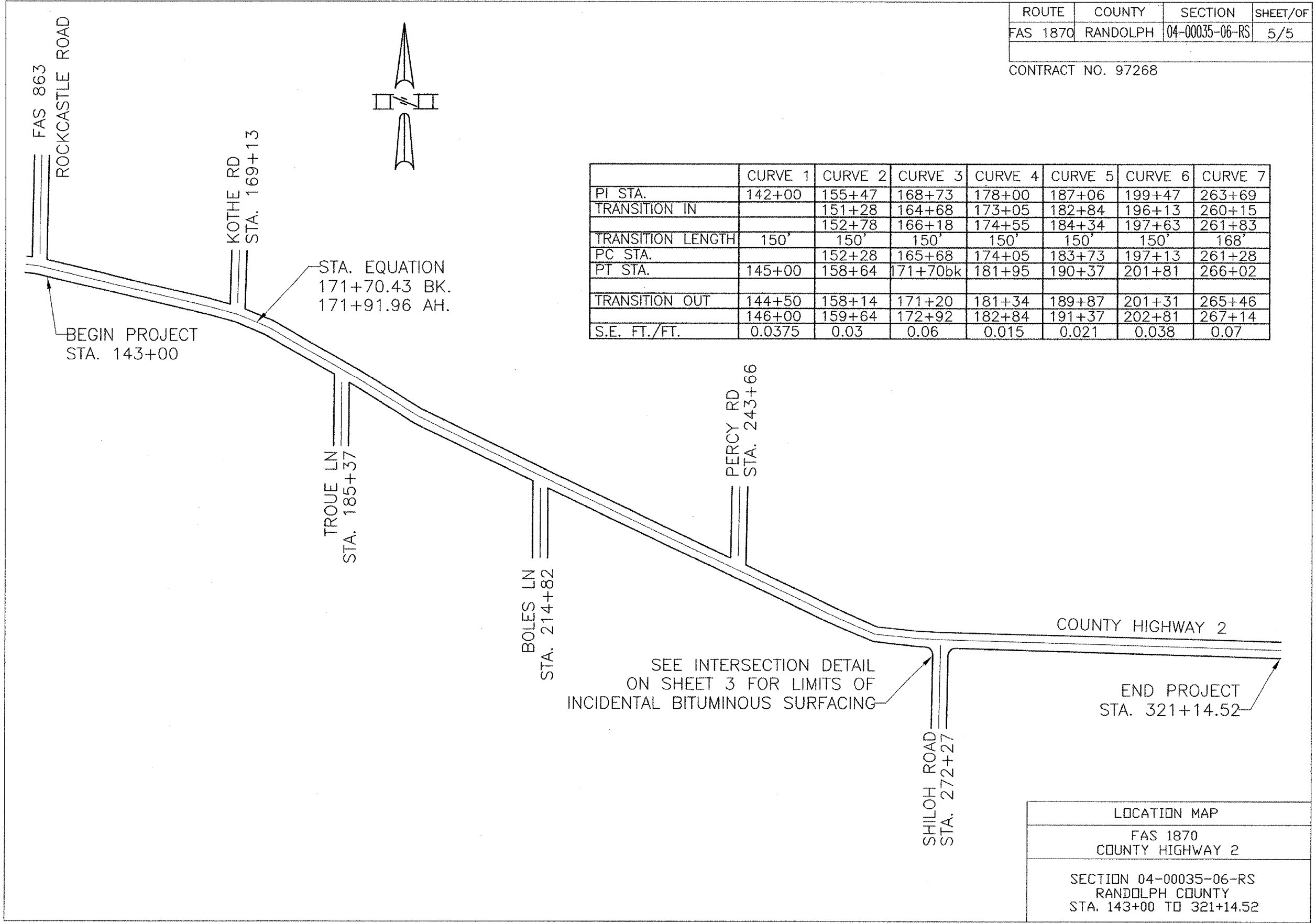


50 40 30 20 10 0 10 20 30 40 50 50 40 30 20 10 0 10 20 30 40 50

ROUTE	COUNTY	SECTION	SHEET/OF
FAS 1870	RANDOLPH	04-00035-06-RS	5/5

CONTRACT NO. 97268

	CURVE 1	CURVE 2	CURVE 3	CURVE 4	CURVE 5	CURVE 6	CURVE 7
PI STA.	142+00	155+47	168+73	178+00	187+06	199+47	263+69
TRANSITION IN		151+28	164+68	173+05	182+84	196+13	260+15
		152+78	166+18	174+55	184+34	197+63	261+83
TRANSITION LENGTH	150'	150'	150'	150'	150'	150'	168'
PC STA.		152+28	165+68	174+05	183+73	197+13	261+28
PT STA.	145+00	158+64	171+70bk	181+95	190+37	201+81	266+02
TRANSITION OUT	144+50	158+14	171+20	181+34	189+87	201+31	265+46
	146+00	159+64	172+92	182+84	191+37	202+81	267+14
S.E. FT./FT.	0.0375	0.03	0.06	0.015	0.021	0.038	0.07



LOCATION MAP
FAS 1870 COUNTY HIGHWAY 2
SECTION 04-00035-06-RS RANDOLPH COUNTY STA. 143+00 TO 321+14.52