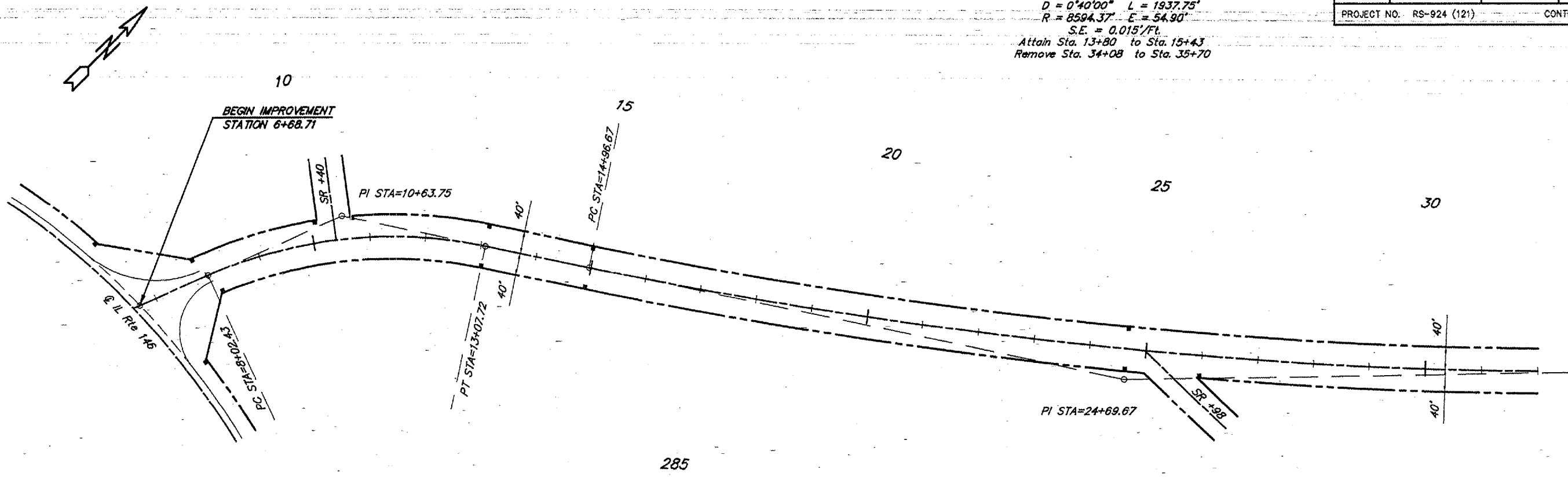


ROUTE	SECTION	COUNTY	TOTAL SHEETS	SHEET NO.
FAS 924	05-00094-00-RS	UNION	11	4
PROJECT NO. RS-924 (121)			CONTRACT NO. 99256	

CURVE DATA
 $\Delta = 12^{\circ}55'06''$ $T = 973.00'$
 $D = 0^{\circ}40'00''$ $L = 1937.75'$
 $R = 8594.37'$ $E = 54.90'$
 $S.E. = 0.015'/ft.$
 Attain Sta. 13+80 to Sta. 15+43
 Remove Sta. 34+08 to Sta. 35+70



CURVE DATA
 $\Delta = 36^{\circ}02'17''$ $T = 261.32'$
 $D = 7^{\circ}07'56''$ $L = 505.29'$
 $R = 803.34'$ $E = 41.43'$
 $S.E. = 0.059'/ft.$
 Attain Sta. 7+18 to Sta. 8+33
 Remove Sta. 12+65 to Sta. 13+80

SCALES:
 1" = 200' HOR
 1" = 20' VER

NOTE: Location and number of entrances shall be determined in the field by the Engineer.

