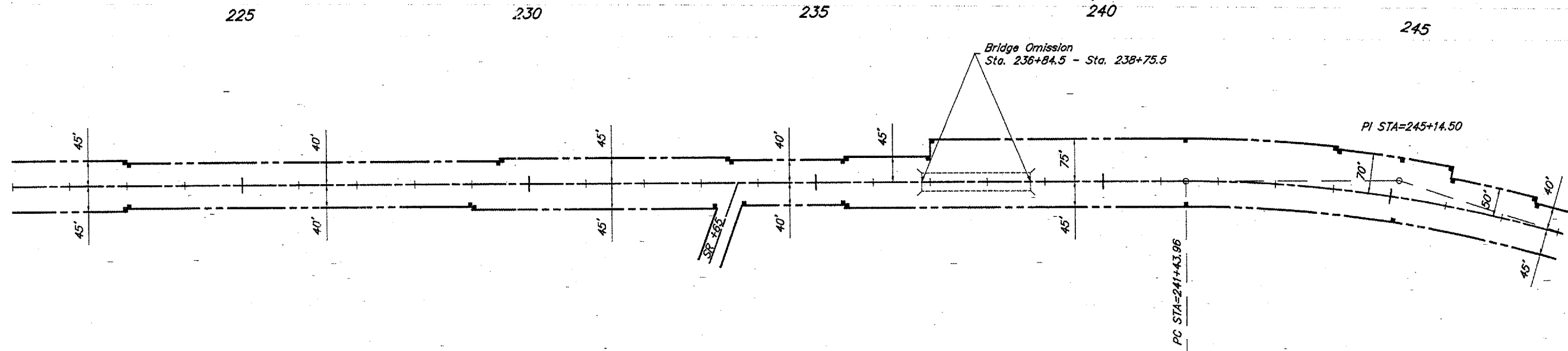
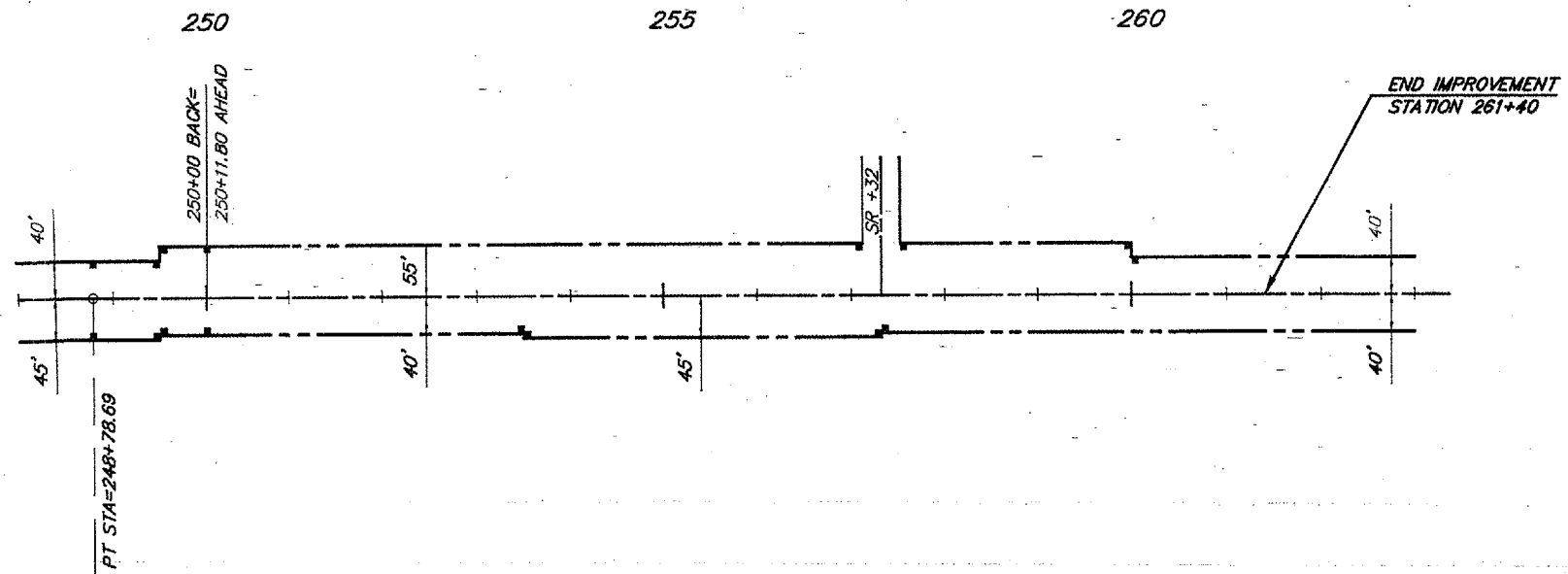


ROUTE	SECTION	COUNTY	TOTAL SHEETS	SHEET NO.
FAS 924	05-00094-00-RS	UNION	11	9
PROJECT NO. RS-924 (121)			CONTRACT NO. 99256	



SCALES:  
1" = 200' HOR

**CURVE DATA**  
 $\Delta = 18^{\circ}22'00''$   $T = 370.54'$   
 $D = 2^{\circ}29'59''$   $L = 734.72'$   
 $R = 2292.01'$   $E = 29.76'$   
 $S.E. = 0.046'/ft.$   
 Attain Sta. 240+31 to Sta. 241+81  
 Remove Sta. 248+41 to Sta. 249+91



SCALES:  
1" = 200' HOR