

STATE OF ILLINOIS
DEPARTMENT OF TRANSPORTATION

F.A.S. RTE.	SECTION	COUNTY	TOTAL SHEETS	SHEET NO.
785	17-1RS-1	CLINTON	13	1
		ILLINOIS	CONTRACT NO. 76J76	

FOR INDEX OF SHEETS, SEE SHEET NO. 2

PROPOSED HIGHWAY PLANS

FAS ROUTE 785 (ALBERS ROAD)
SECTION 14-1RS-1

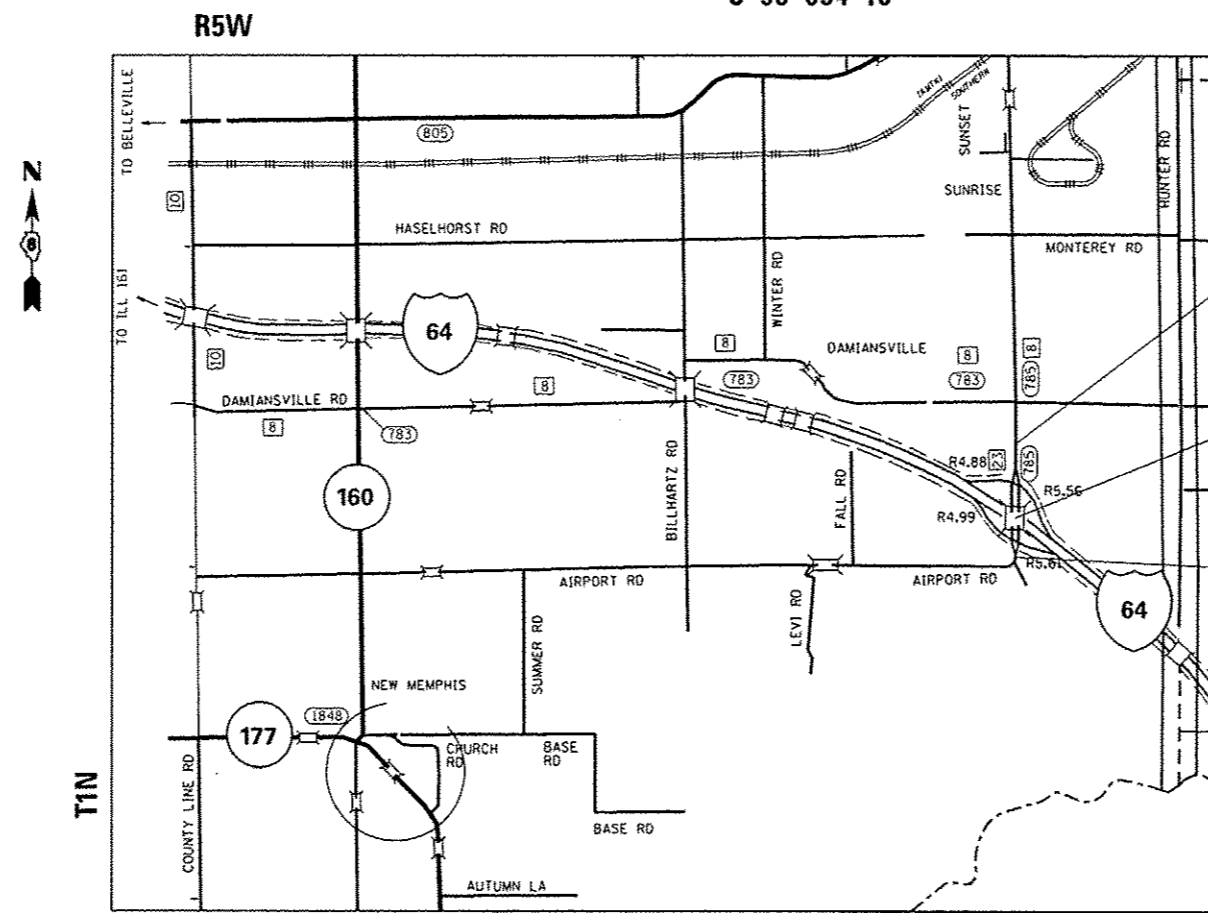
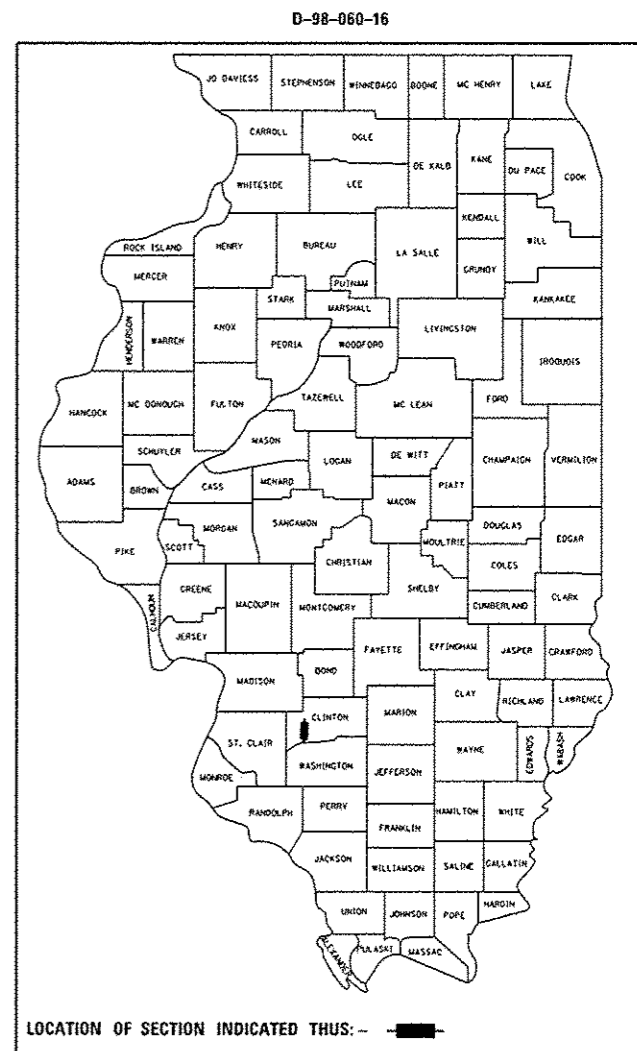
3P RESURFACING & PATCHING
CLINTON COUNTY

C-98-054-16

TRAFFIC DATA

FROM STA. 37+56 TO STA. 50+00
2015 ADT = 475 (ACTUAL)
2017 ADT = 500 (ESTIMATED)
2037 ADT = 600 (ESTIMATED)
SU = 4.8% MU = 2.3%

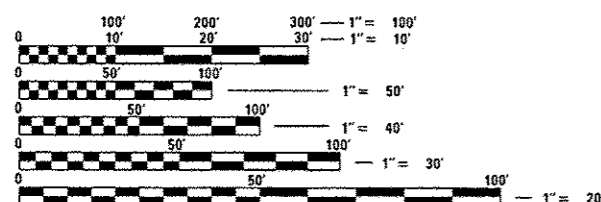
FROM STA. 50+00 TO STA. 68+15
2015 ADT = 3050 (ACTUAL)
2017 ADT = 3200 (ESTIMATED)
2037 ADT = 3800 (ESTIMATED)
SU = 3.7% MU = 1.5%



END PROJECT
STA. 68+15

SN 014-0037
STA. 50+00
OMISSION: STA. 48+55
TO STA. 51+45

BEGIN PROJECT
STA. 37+56

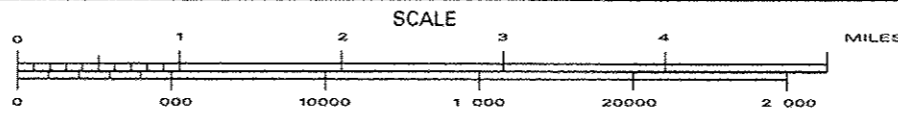


FULL SIZE PLANS HAVE BEEN PREPARED USING STANDARD ENGINEERING SCALES. REDUCED SIZED PLANS WILL NOT CONFORM TO STANDARD SCALES. IN MAKING MEASUREMENTS ON REDUCED PLANS, THE ABOVE SCALES MAY BE USED.

J.U.L.I.E.
JOINT UTILITY LOCATION INFORMATION FOR EXCAVATION
1-800-892-0123
OR 811

PROJECT ENGINEER: TIM PADGETT (618) 346-3325
PROJECT MANAGER: STEPHANE B. SECK BIRHAME (618) 346-3208

CONTRACT NO. 76J76



GROSS LENGTH = 3059 FT. = 0.579 MILE
NET LENGTH = 2769 FT. = 0.524 MILE

STATE OF ILLINOIS
DEPARTMENT OF TRANSPORTATION

SUBMITTED Feb 2 2017
Jeffrey E. K...
REGIONAL ENGINEER

Mar 24 2017
Margaret M. Addis
ENGINEER OF DESIGN AND ENVIRONMENT

Mar 24 2017
Travis J. ...
DIRECTOR OF PROGRAM DEVELOPMENT

PRINTED BY THE AUTHORITY
OF THE STATE OF ILLINOIS

RURAL

CONSTR. CODE

100% STATE ✓

ROADWAY

0005

S.N.

CODE NO.	ITEM	UNIT	TOTAL QUANTITY	S.N.
40600290	BITUMINOUS MATERIALS (TACK COAT)	POUND	4689	4689
40600637	LEVELING BINDER (MACHINE METHOD), IL-9.5FG, N70	TON	584	584
40600990	TEMPORARY RAMP	SQ YD	411	411
40603315	HOT-MIX ASPHALT SURFACE COURSE, MIX "C", N70	TON	876	876
44000158	HOT-MIX ASPHALT SURFACE REMOVAL, 2 1/4"	SQ YD	10420	10420
44200180	PAVEMENT PATCHING, TYPE II, 15 INCH	SQ YD	73	73
44200184	PAVEMENT PATCHING, TYPE III, 15 INCH	SQ YD	230	230
44200186	PAVEMENT PATCHING, TYPE IV, 15 INCH	SQ YD	181	181
48102100	AGGREGATE WEDGE SHOULDER, TYPE B	TON	49	49
* 63000001	STEEL PLATE BEAM GUARDRAIL, TYPE A, 6 FOOT POSTS	FOOT	587.5	587.5
* 63100167	TRAFFIC BARRIER TERMINAL, TYPE 1 (SPECIAL) TANGENT	EACH	2	2
63200310	GUARDRAIL REMOVAL	FOOT	555	555
67100100	MOBILIZATION	LSUM	1	1
70100450	TRAFFIC CONTROL AND PROTECTION, STANDARD 701201	LSUM	1	1

* SPECIALTY ITEM

FILE NAME *	USER NAME *	DESIGNED -	REVISED -	STATE OF ILLINOIS DEPARTMENT OF TRANSPORTATION	SUMMARY OF QUANTITIES				
p:\118846310\INTEG\Illinois.gov\PI\DOT\Documents\IDOT Offices\District 8\Projects\0875\DRAWING\DATA\ROADS\0875\0875-14-1RS-1.dwg	murraydo	DRAMA	REVISOR		F.A.S. RTE.	SECTION	COUNTY	TOTAL SHEETS	SHEET NO.
PLT SCALE = 1/8" = 100'-00"	CHECKED -	REVISOR -	REVISOR -		785	14-1RS-1	CLINTON	13	3
PLT DATE = 2/3/2017	DATE -	REVISOR -	REVISOR -		SCALE:	SHEET NO. OF SHEETS	STA. TO STA.	CONTRACT NO. 76J76	
						FED. ROAD DIST. NO.		ILLINOIS FED. AID PROJECT	

103 10 107

RURAL
CONSTR. CODE

100% STATE

ROADWAY

0005

S.N.

CODE NO.	ITEM	UNIT	TOTAL QUANTITY	RURAL CONSTR. CODE
70100460	TRAFFIC CONTROL AND PROTECTION, STANDARD 701306	LSUM	1	1
70100600	TRAFFIC CONTROL AND PROTECTION, STANDARD 701336	LSUM	1	1
70300100	SHORT TERM PAVEMENT MARKING	FOOT	563	563
70300150	SHORT TERM PAVEMENT MARKING REMOVAL	SQ FT	112	112
70300210	TEMPORARY PAVEMENT MARKING LETTERS AND SYMBOLS	SQ FT	94	94
70300220	TEMPORARY PAVEMENT MARKING - LINE 4"	FOOT	11207	11207
* 72501000	TERMINAL MARKER - DIRECT APPLIED	EACH	2	2
* 78000100	THERMOPLASTIC PAVEMENT MARKING - LETTERS AND SYMBOLS	SQ FT	94	94
* 78000200	THERMOPLASTIC PAVEMENT MARKING - LINE 4"	FOOT	11207	11207
* 78100100	RAISED REFLECTIVE PAVEMENT MARKER	EACH	34	34
* 78200005	GUARDRAIL REFLECTORS, TYPE A	EACH	8	8
78200020	CURB REFLECTORS	EACH	94	94
78300200	RAISED REFLECTIVE PAVEMENT MARKER REMOVAL	EACH	34	34
* 80300100	LOCATING UNDERGROUND CABLE	FOOT	188	188

14

* SPECIALTY ITEM

RURAL
CONSTR. CODE

100% STATE

ROADWAY

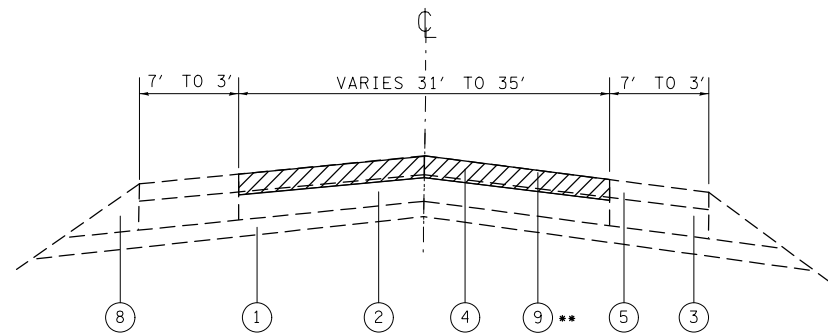
0005

S.N.

CODE NO.	ITEM	UNIT	TOTAL QUANTITY	RURAL CONSTR. CODE
X0327979	PAVEMENT MARKING REMOVAL - GRINDING	SQ FT	3830	3830
Z0034105	MATERIAL TRANSFER DEVICE	TON	876	876
Z0036200	PAINT CURB	FOOT	3778	3778

3

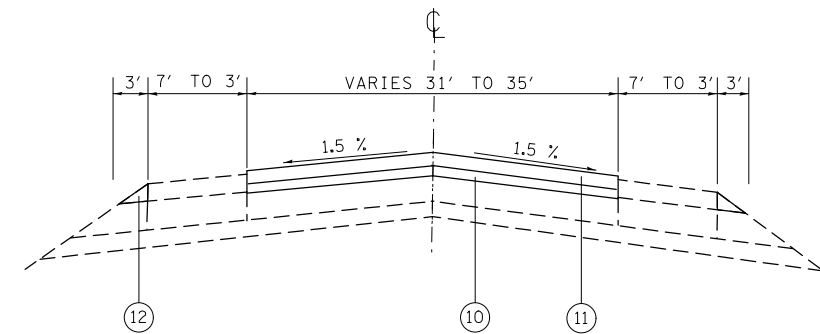
FILE NAME *	USER NAME * murreyde	DESIGNED -	REVISED -	STATE OF ILLINOIS DEPARTMENT OF TRANSPORTATION	SUMMARY OF QUANTITIES				F.A.S. RTE.	SECTION	COUNTY	TOTAL SHEETS	SHEET NO.
p:\IL\LB\EBID\INTEG.ILLINOIS.GOV\PIWIDT\Docu	umense\DDT Offices\District 8\Projects\0975	DRAWING DATA\EAQ\sheet\0876J76-shr-pla	REVISED -		785	14-1RS-1	CLINTON	13	4				
PLOT SCALE * 100.0000 / in.	CHECKED -	REVISED -	SCALE:		SHEET NO. OF SHEETS	STA.	TO STA.	CONTRACT NO. 76J76					
PLOT DATE * 2/3/2017	DATE -	REVISED -	FED. ROAD DIST. NO.		ILLINOIS FED. AID PROJECT								



EXISTING TYPICAL SECTION

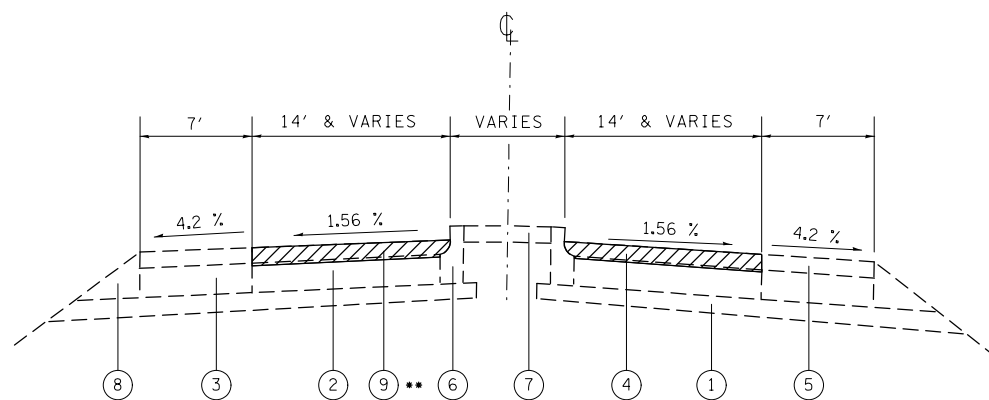
STA. 37+56 TO 38+84
STA. 61+45 TO 68+15

** MILL 1/4" DEEP INTO THE EXISTING CONCRETE PAVEMENT



PROPOSED TYPICAL SECTION

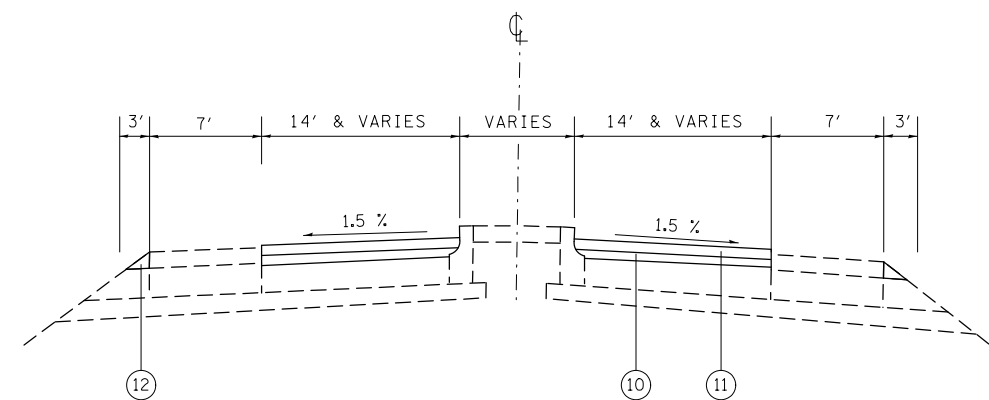
STA. 37+56 TO 38+84
STA. 61+45 TO 68+15



EXISTING TYPICAL SECTION

STA. 38+84 TO 61+45
BRIDGE OMISSION : STA. 48+55 TO 51+45

** MILL 1/4" DEEP INTO THE EXISTING CONCRETE PAVEMENT



PROPOSED TYPICAL SECTION

STA. 38+84 TO 61+45
BRIDGE OMISSION : STA. 48+55 TO 51+45

LEGEND

- ① EXISTING STABILIZED SUB BASE - 4"
- ② EXISTING PORTLAND CEMENT CONCRETE PAVEMENT - 8"
- ③ EXISTING STABILIZED SHOULDER - 8"
- ④ EXISTING HOT MIX ASPHALT OVERLAY - 2"
- ⑤ EXISTING PAVED SHOULDER - 2"
- ⑥ EXISTING CONCRETE CURB AND GUTTER, TYPE M-6.06
- ⑦ EXISTING CONCRETE MEDIAN SURFACE - 4"
- ⑧ EXISTING AGGREGATE SHOULDER WEDGE
- ⑨ PROPOSED HOT MIX ASPHALT REMOVAL - 2 1/4"
- ⑩ PROPOSED LEVELING BINDER, 1"
- ⑪ PROPOSED HOT MIX ASPHALT SURFACE COURSE, MIX "C", N70, 1 1/2"
- ⑫ PROPOSED AGGREGATE WEDGE SHOULDER, TYPE B

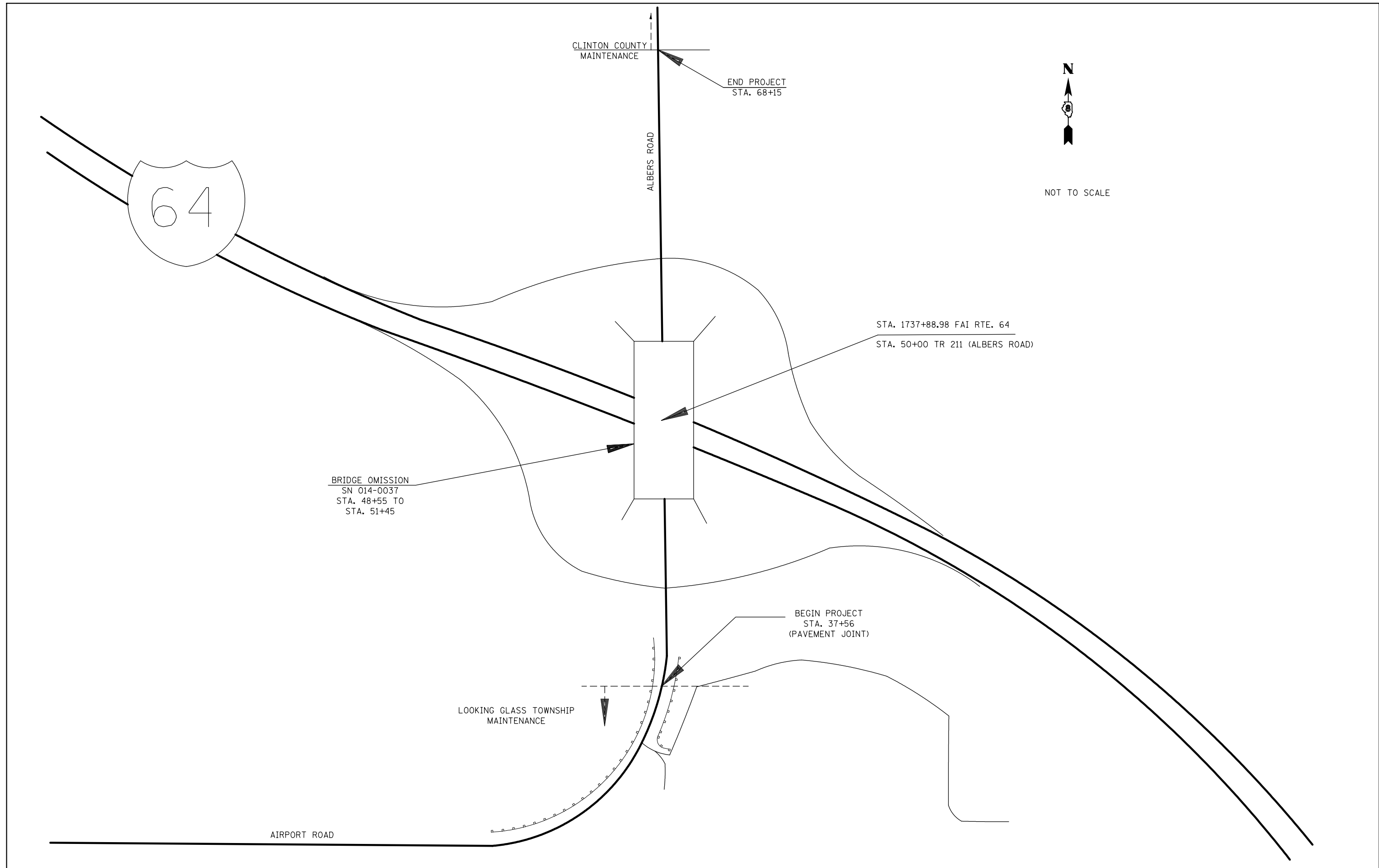
FILE NAME =	USER NAME = SECKBS	DESIGNED -	REVISED -
pw:\IL\084EBIDINTEG.illinois.gov\PWIDOT\Documents\IDOT Offices\District 8\Projects\0876\DRAWING\DATA\EA0\sheets\0876J76-sht-plan.dwg		CHECKED -	REVISED -
		DATE -	REVISED -

STATE OF ILLINOIS
DEPARTMENT OF TRANSPORTATION

TYPICAL SECTIONS

SCALE: SHEET NO. OF SHEETS STA. TO STA.

F.A.S. RTE.	SECTION	COUNTY	TOTAL SHEETS	SHEET NO.
785	14-IRS-1	CLINTON	13	5
CONTRACT NO. 76J76				
FED. ROAD DIST. NO. ILLINOIS FED. AID PROJECT				

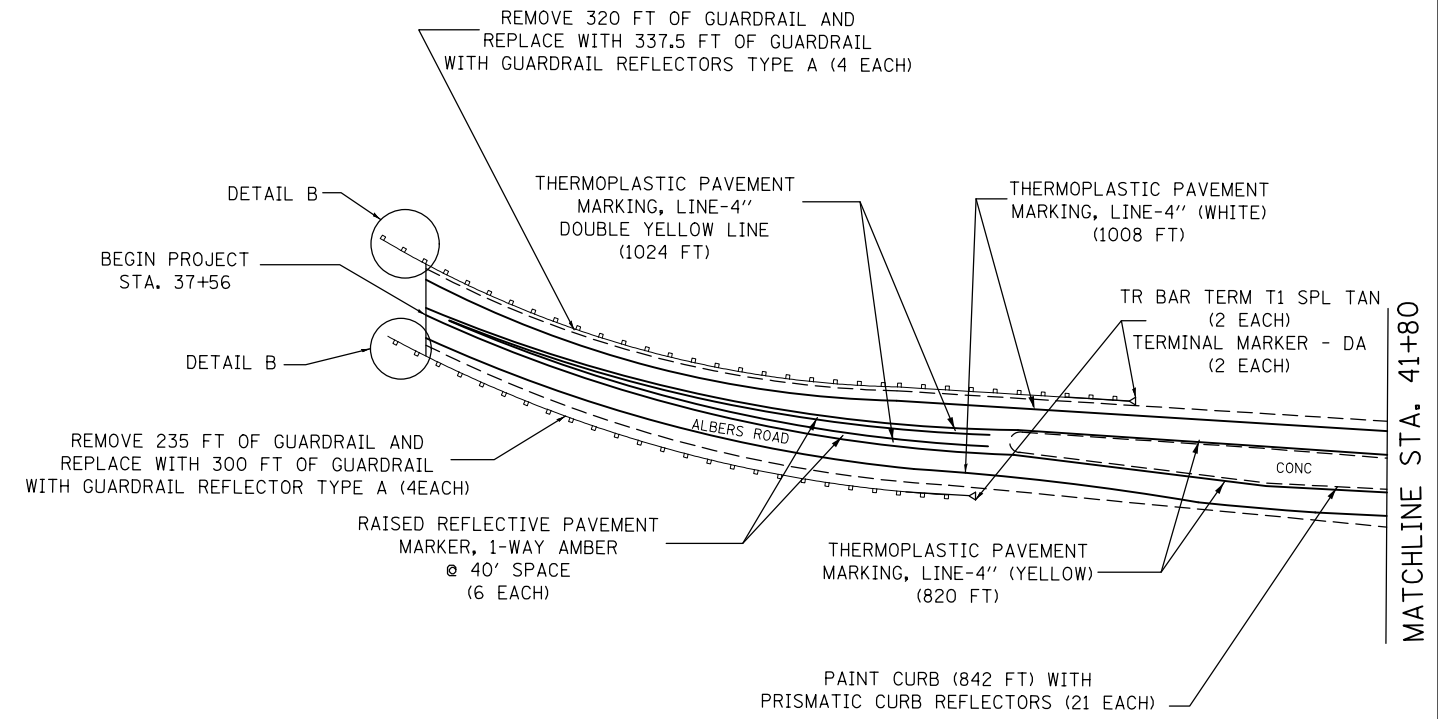


FILE NAME =	USER NAME = SECKBS	DESIGNED -	REVISED -
pw:\IL\084EBIDINTEG.illinois.gov\PWIDOT\Documents\IDOT Offices\District 8\Projects\0876-DRAWING\DATA\EA0sheets\0876J76-sht-plan.dwg		CHECKED -	REVISED -
Default	PLOT DATE = 1/9/2017	DATE -	REVISED -

**STATE OF ILLINOIS
DEPARTMENT OF TRANSPORTATION**

LOCATION MAP			
SCALE:	SHEET	OF	SHEETS
	STA.	TO	STA.

F.A.S RTE.	SECTION	COUNTY	TOTAL SHEETS	SHEET NO.
785	14-IRS-1	CLINTON	13	7
CONTRACT NO. 76J76				
ILLINOIS FED. AID PROJECT				



FILE NAME =	USER NAME = SECKBS	DESIGNED -	REVISED -
pw:\IL\084EBIDINTEG\illinois.gov\PWIDOT\Documents\IDOT Offices\District 8\Projects\0876-DRAWING\DATA\EA0sheets\0876J76-sht-plan.dwg		CHECKED -	REVISED -
Default	PLOT DATE = 1/9/2017	DATE -	REVISED -

**STATE OF ILLINOIS
DEPARTMENT OF TRANSPORTATION**

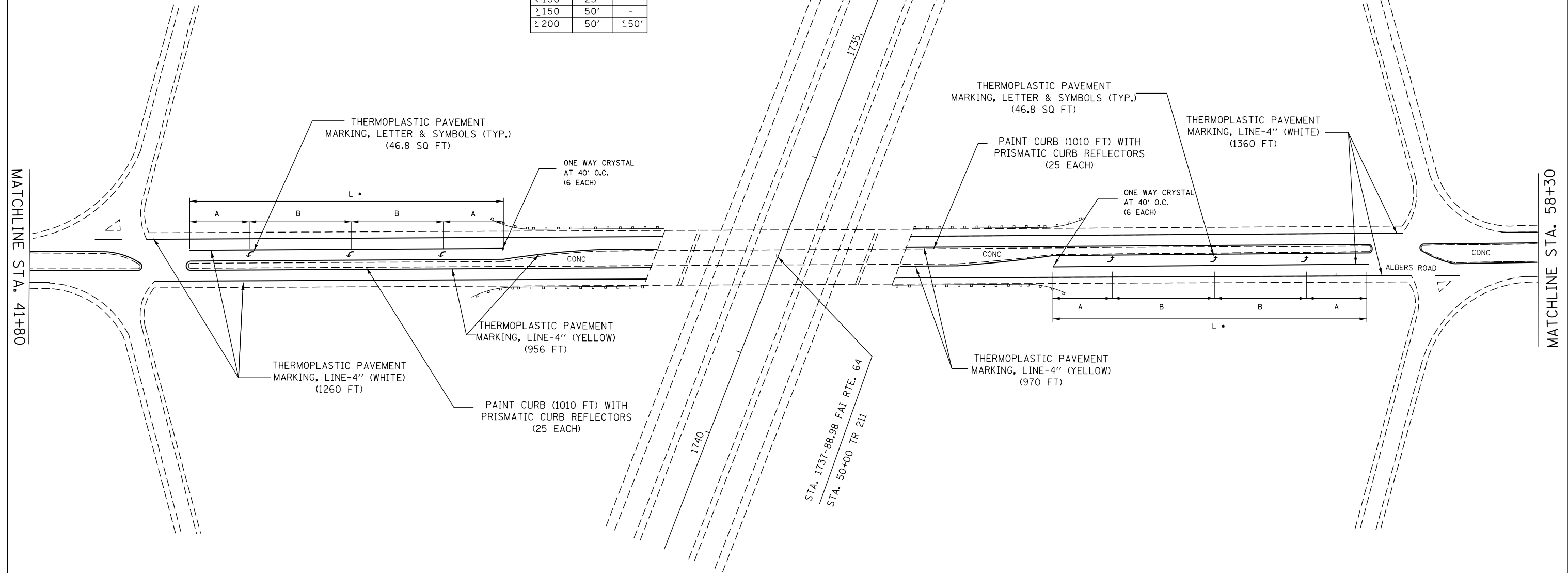
PAVEMENT MARKING DETAILS			
SCALE:	SHEET	OF SHEETS	STA. TO STA.

F.A.S RTE.	SECTION	COUNTY	TOTAL SHEETS	SHEET NO.
785	14-IRS-1	CLINTON	13	8
CONTRACT NO. 76J76				
ILLINOIS FED. AID PROJECT				



NOT TO SCALE

L	A	B
< 150	25'	-
≥ 150	50'	-
≥ 200	50'	≤ 50'



MATCHLINE STA. 41+80

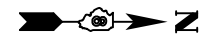
MATCHLINE STA. 58+30

FILE NAME =	USER NAME = SECKBS	DESIGNED -	REVISED -
pw:\IL\084EBIDINTEG\illinois.gov\PIDOT\Documents\DOT Offices\District 8\Projects\0876\DRAWING\DATA\EA0\Sheets\0876J76-sht-plan.dwg		CHECKED -	REVISED -
Default	PLOT DATE = 1/9/2017	DATE -	REVISED -

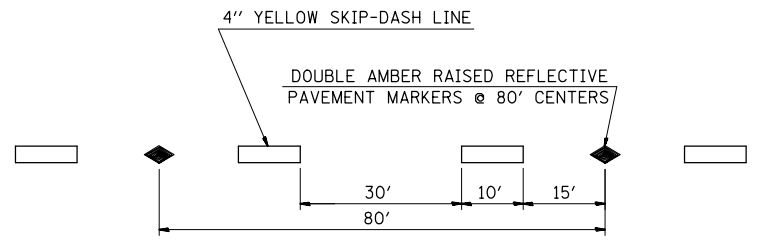
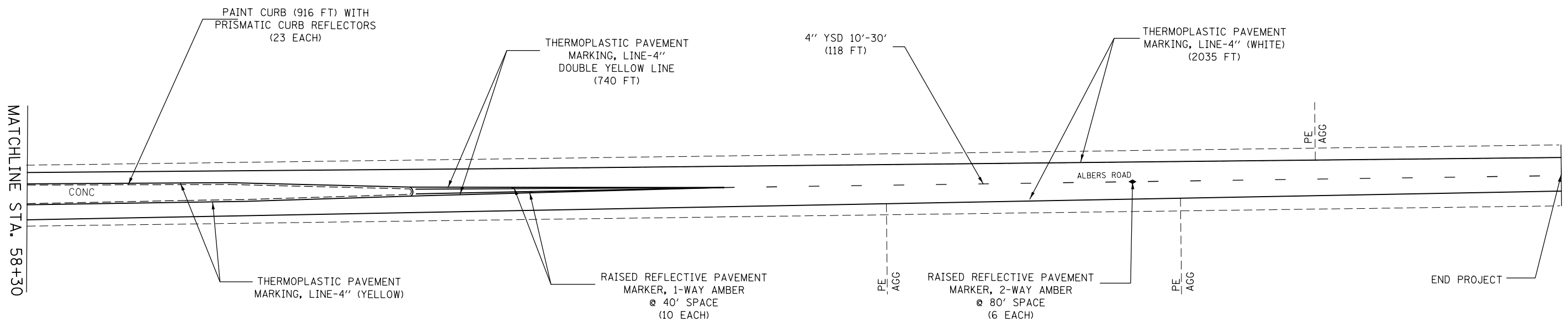
**STATE OF ILLINOIS
DEPARTMENT OF TRANSPORTATION**

PAVEMENT MARKING DETAILS			
SCALE:	SHEET	OF SHEETS	STA. TO STA.

F.A.S RTE.	SECTION	COUNTY	TOTAL SHEETS	SHEET NO.
785	14-IRS-1	CLINTON	13	9
CONTRACT NO. 76J76				
ILLINOIS FED. AID PROJECT				



NOT TO SCALE



TYPICAL APPLICATION FOR YELLOW SKIP-DASH LINES WITH RAISED REFLECTIVE PAVEMENT MARKERS

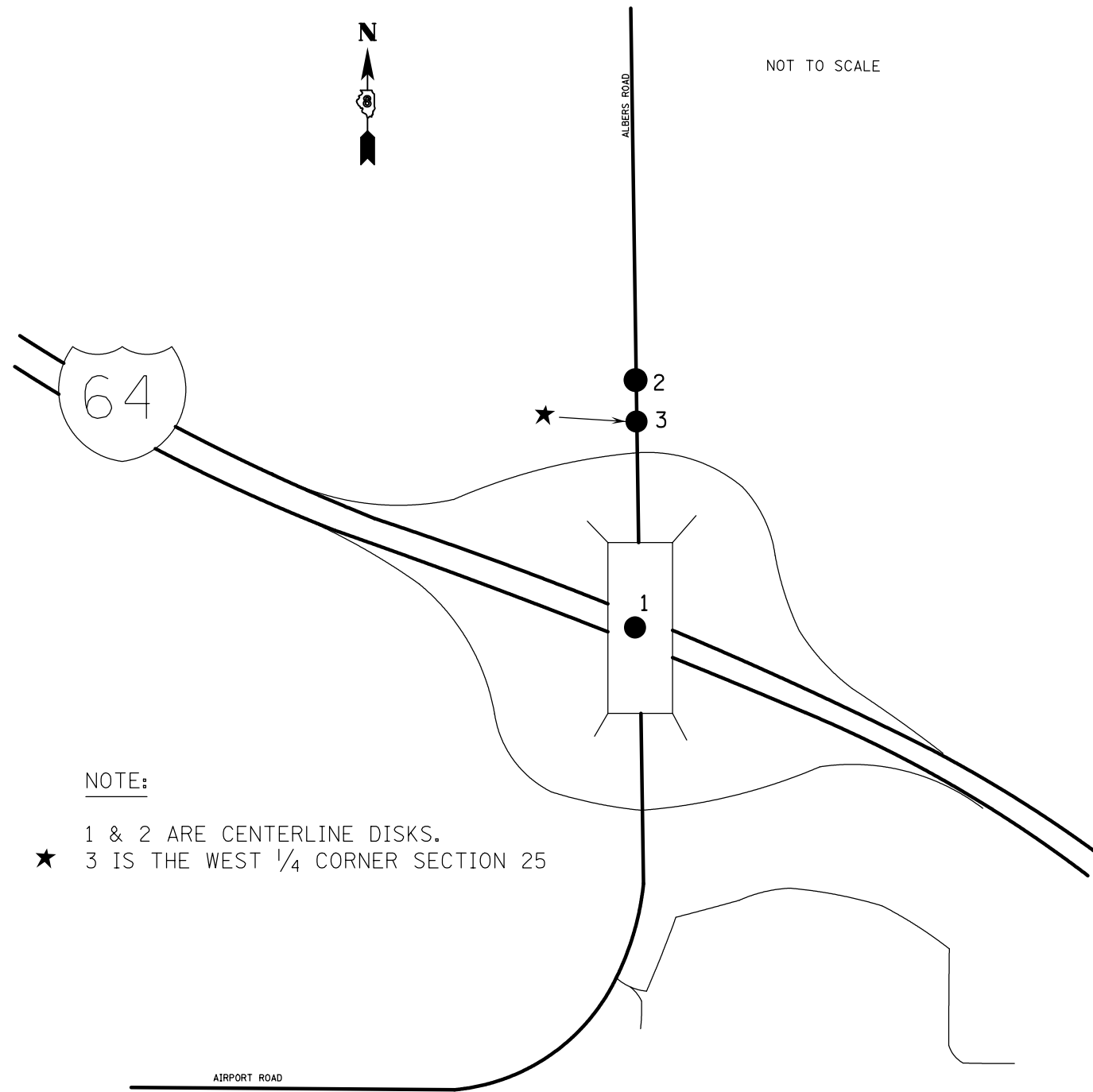
FILE NAME =	USER NAME = SECKBS	DESIGNED -	REVISED -
pw:\11\084EBIDINTEG.illinois.gov\PI\DOT\Documents\IDOT Offices\District 8\Projects\0876-DRAWING\0876-D876J76-sht-pln.dwg		CHECKED -	REVISED -
Default	PLOT DATE = 1/9/2017	DATE -	REVISED -

**STATE OF ILLINOIS
DEPARTMENT OF TRANSPORTATION**

PAVEMENT MARKING DETAILS

SCALE: SHEET OF SHEETS STA. TO STA.

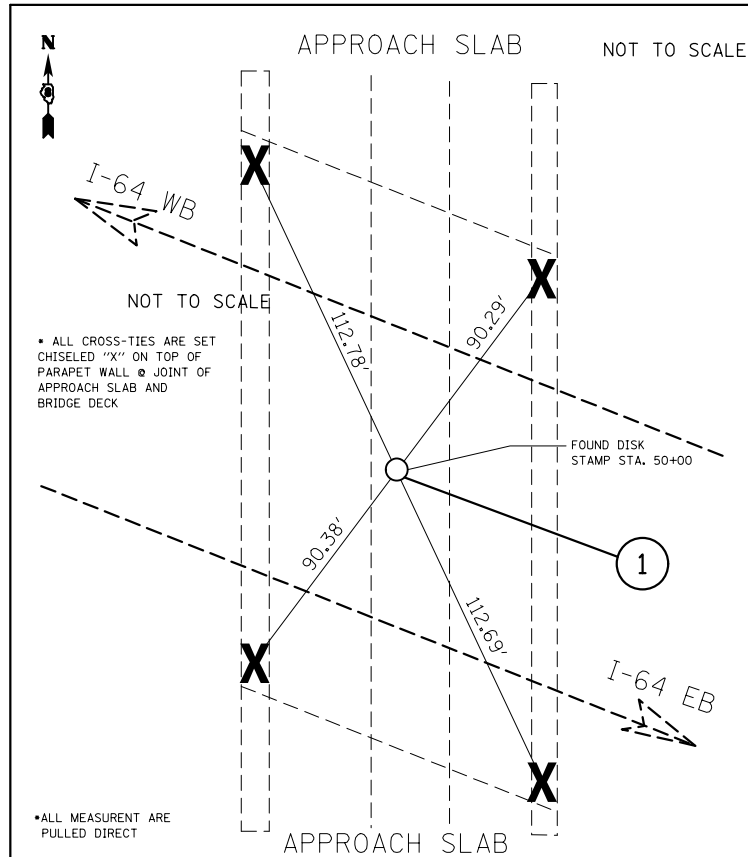
F.A.S. RTE.	SECTION	COUNTY	TOTAL SHEETS	SHEET NO.
785	14-IRS-1	CLINTON	13	10
CONTRACT NO. 76J76				
ILLINOIS FED. AID PROJECT				



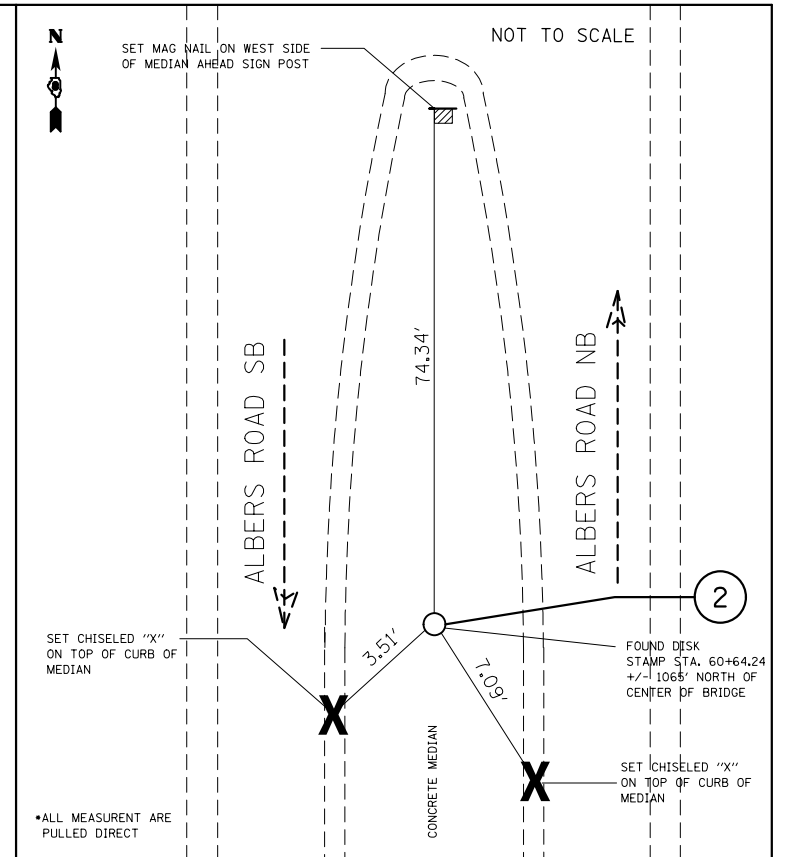
NOTE:

- 1 & 2 ARE CENTERLINE DISKS.
- ★ 3 IS THE WEST 1/4 CORNER SECTION 25

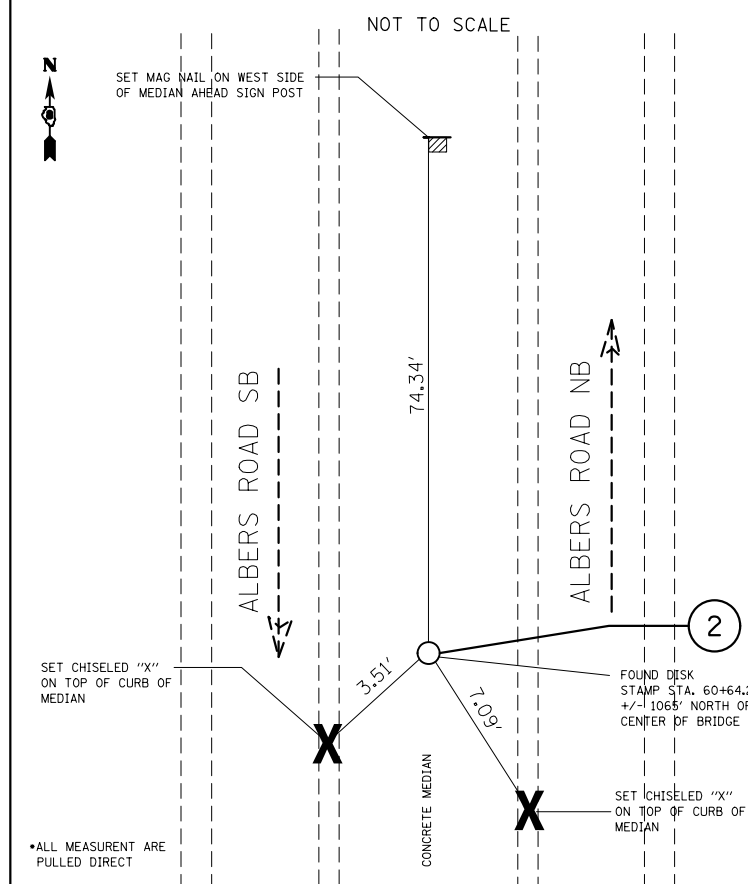
SECTION CORNER COORDINATE TABLE		
POINT NO.	DESCRIPTION	CORNER
SC 1	FOUND DISK IN CL BRIDGE OVER I-64 STAMPED STA. 50+00 ON ALBERS ROAD	CENTERLINE MONUMENT
SC 2	FOUND DISK IN CONCRETE MEDIAN OF ALBERS ROAD STAMPED STA. 60+64.24	CENTERLINE MONUMENT
SC 3	FOUND PK NAIL IN CONCRETE MEDIAN	W 1/4 COR SEC. 25, T.1.N, R.5.W.



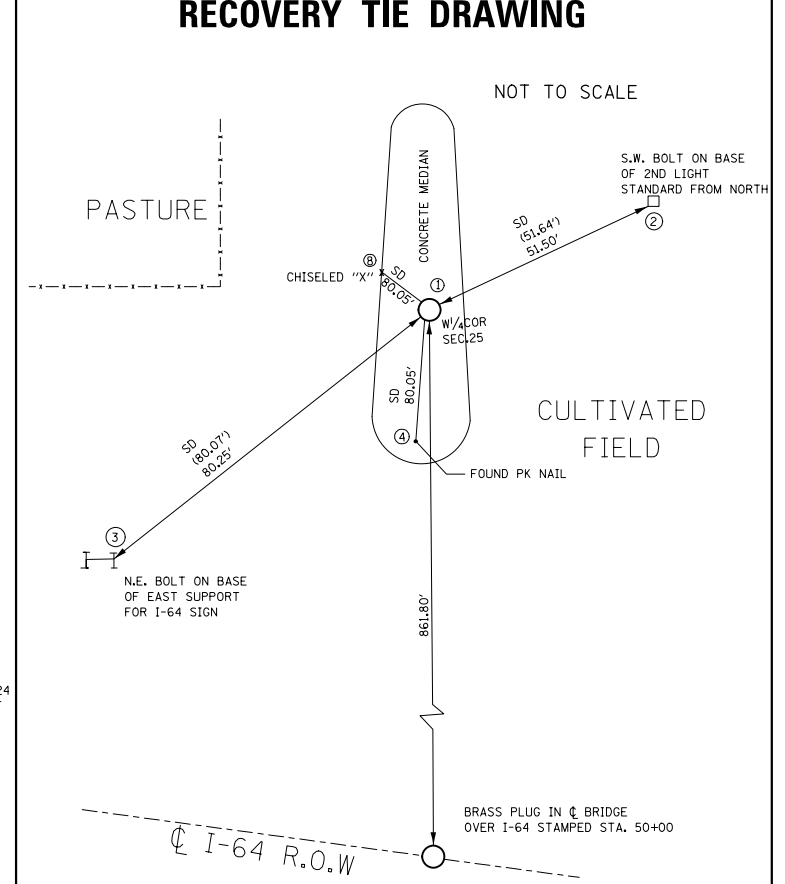
SC 1 CENTERLINE MONUMENT



SC 2 CENTERLINE MONUMENT



SC 3 W 1/4 COR SEC 25, T.1.N, R.5.W.



MONUMENT RECORD, BOOK 1, PAGE 212

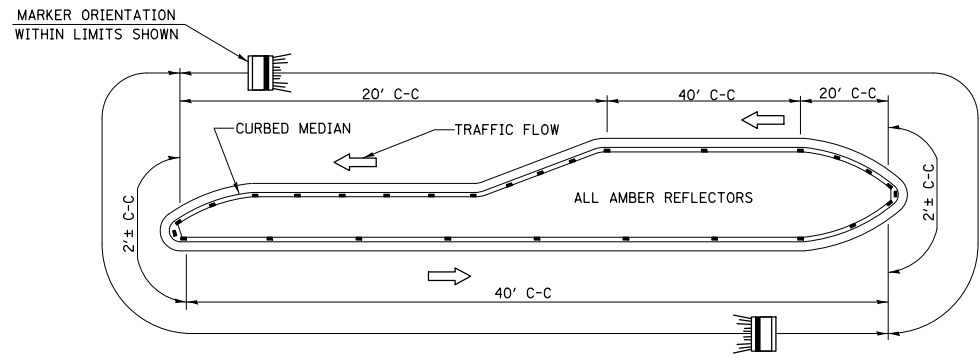
FILE NAME =	USER NAME = SECKBS	DESIGNED -	REVISED -
pw:\11084EBIDINTEG.illinois.gov\PIWIDOT\Documents\IDOT Offices\District 8\Projects\D876\DRAWING\DATA\EA0\Sheets\D876J76-sht-plan.dwg		REVISIONS	REVISIONS
	PLOT SCALE = 100.0000' / 1" =	CHECKED -	REVISED -
	PLOT DATE = 1/9/2017	DATE -	REVISED -

**STATE OF ILLINOIS
DEPARTMENT OF TRANSPORTATION**

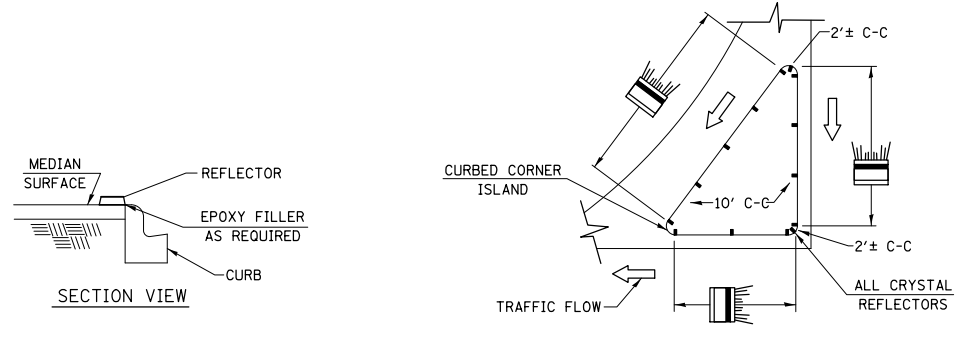
SURVEY MONUMENTS

SCALE: SHEET NO. OF SHEETS STA. TO STA.

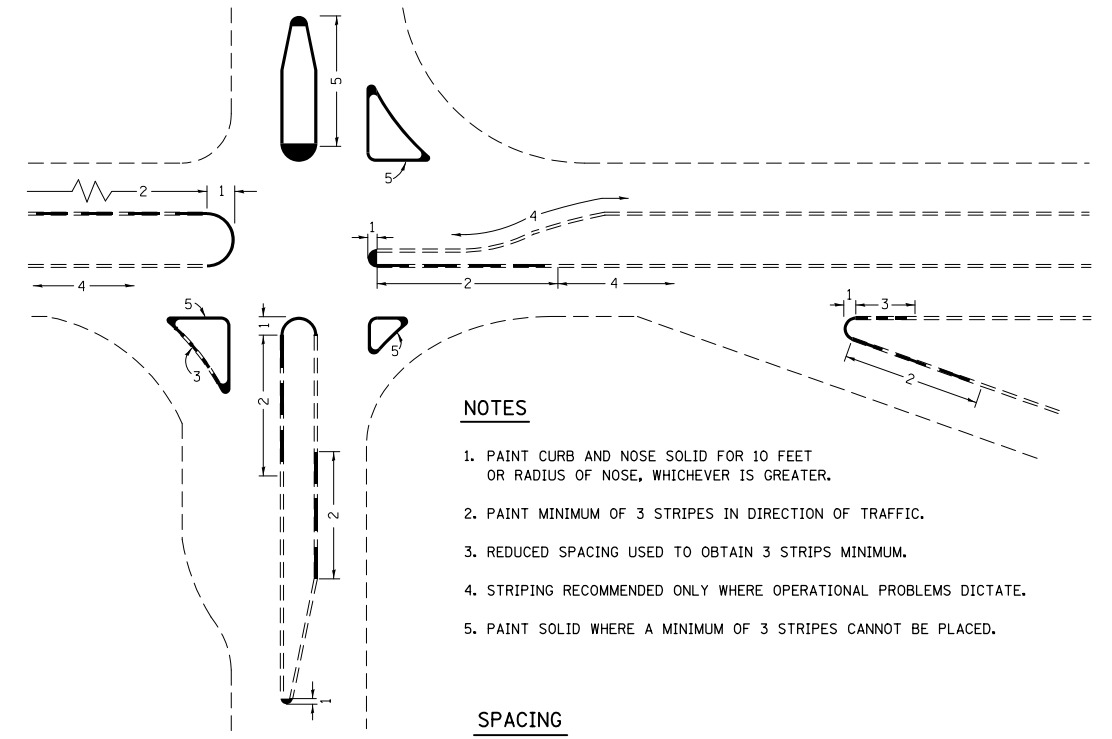
F.A.S. RTE.	SECTION	COUNTY	TOTAL SHEETS	SHEET NO.
785	14-IRS-1	CLINTON	13	11
CONTRACT NO. 76J76				
FED. ROAD DIST. NO. ILLINOIS FED. AID PROJECT				



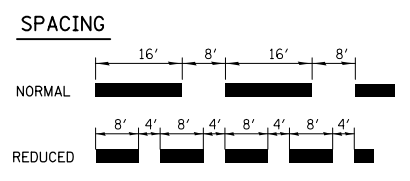
- NOTES**
1. PRISMATIC REFLECTORS SHALL BE MONO-DIRECTIONAL AND POSITIONED SO THAT THE REFLECTIVE FACE IS FACING THE APPROACHING TRAFFIC.
 2. PRISMATIC REFLECTORS SHALL BE SECURED IN PLACE WITH AN EPOXY ADHESIVE.
 3. PRISMATIC REFLECTORS SHALL BE EITHER AMBER OR CRYSTAL IN COLOR.



TYPICAL PLACEMENT OF PRISMATIC REFLECTORS ON CURBS
(NO SCALE)



- NOTES**
1. PAINT CURB AND NOSE SOLID FOR 10 FEET OR RADIUS OF NOSE, WHICHEVER IS GREATER.
 2. PAINT MINIMUM OF 3 STRIPES IN DIRECTION OF TRAFFIC.
 3. REDUCED SPACING USED TO OBTAIN 3 STRIPS MINIMUM.
 4. STRIPING RECOMMENDED ONLY WHERE OPERATIONAL PROBLEMS DICTATE.
 5. PAINT SOLID WHERE A MINIMUM OF 3 STRIPES CANNOT BE PLACED.



CURB MARKING

FILE NAME =	USER NAME = SECKBS	DESIGNED -	REVISED -	STATE OF ILLINOIS DEPARTMENT OF TRANSPORTATION	PRISMATIC CURB REFLECTORS & CURB PAINTING			F.A.S. RTE.	SECTION	COUNTY	TOTAL SHEETS	SHEET NO.
pw:\IL\084EBIDINTEG.illinois.gov\PIDOT\Documents\IDOT Offices\District 8\Projects\D876-DRAWING\DATA\EA0sheets\D876J76-sht-plan.dwg		CHECKED -	REVISED -					785	14-IRS-1	CLINTON	13	13
	PLOT SCALE = 100.0000' / 1in.	DATE -	REVISED -		CONTRACT NO. 76J76							
	PLOT DATE = 1/9/2017				FED. ROAD DIST. NO. ILLINOIS FED. AID PROJECT							