

STATE OF ILLINOIS
DEPARTMENT OF TRANSPORTATION

F.A.I. RTE.	SECTION	COUNTY	TOTAL SHEETS	SHEET NO.
70	60-8WS-PP-1	MADISON	11	1
		ILLINOIS	CONTRACT NO. 76K14	

INDEX OF SHEETS

- 1 COVER SHEET
- 2 HIGHWAY STANDARDS, GENERAL NOTES, & COMMITMENTS
- 3 SUMMARY OF QUANTITIES
- 4 TYPICAL SECTIONS
- 5-8 SCHEDULE OF QUANTITIES
- 9-11 PLAN SHEET

FOR LIST OF HIGHWAY STANDARDS, SEE SHEET NO. 2

2016 ADT = 3000 (ACTUAL)
2017 ADT = 3000 (ESTIMATED)
2037 ADT = 3600 (ESTIMATED)
TRUCK PERCENTAGE = 100%

**PROPOSED
HIGHWAY PLANS**

**FAI ROUTE 70 (I-55/70)
SECTION 60-8WS-PP-1
MARYVILLE WEIGH STATION
PATCHING
MADISON COUNTY**

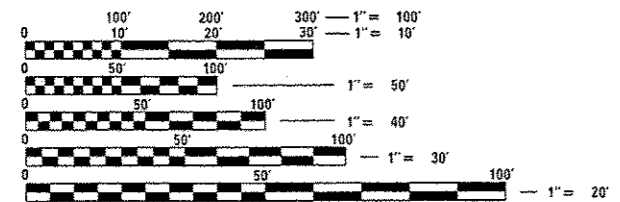
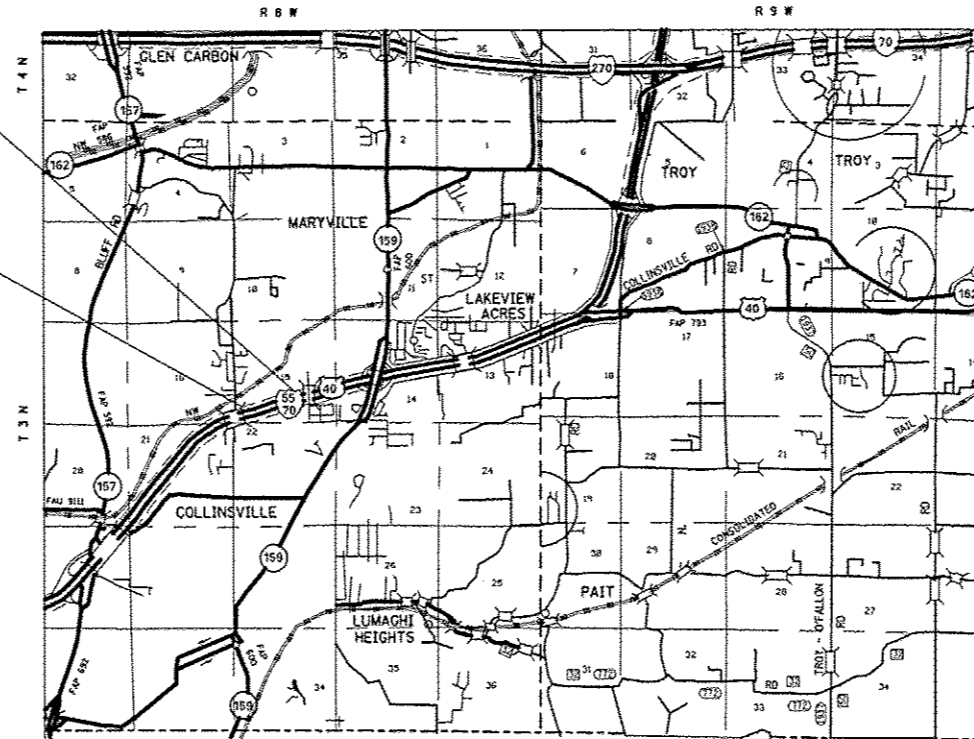
C-98-021-17



LOCATION OF SECTION INDICATED THUS: - [black rectangle] -

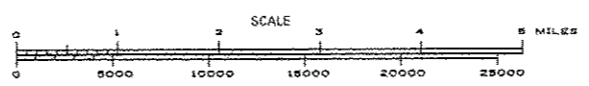
END PROJECT STA. 45 + 50
LATITUDE: 38.705161°
LONGITUDE: -89.974142°

BEGIN PROJECT STA. 13 + 50
LATITUDE: 38.702667°
LONGITUDE: -89.984481°



FULL SIZE PLANS HAVE BEEN PREPARED USING STANDARD ENGINEERING SCALES. REDUCED SIZED PLANS WILL NOT CONFORM TO STANDARD SCALES. IN MAKING MEASUREMENTS ON REDUCED PLANS, THE ABOVE SCALES MAY BE USED.

J.U.L.I.E.
JOINT UTILITY LOCATION INFORMATION FOR EXCAVATION
1-800-892-0123
OR 811



GROSS LENGTH = 3200.00 FT. = 0.606 MILE
NET LENGTH = 3200.00 FT. = 0.606 MILE

PROJECT ENGINEER: TIM PADGETT 618-346-3325
PROJECT MANAGER: JOHNSON DUROSIER 618-346-3454

CONTRACT NO. 76K14

STATE OF ILLINOIS
DEPARTMENT OF TRANSPORTATION

SUBMITTED *Feb 7 20 17*
Jeffrey Z. K...
REGIONAL ENGINEER

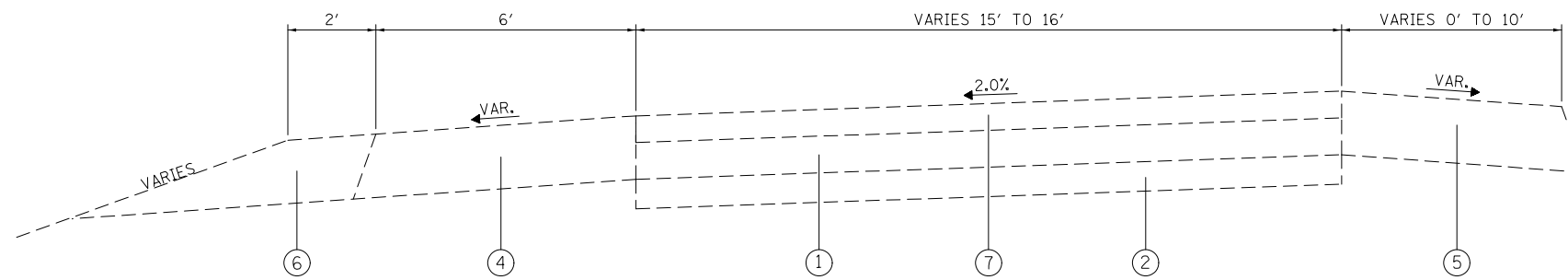
Mar 24 20 17
Kenneth M. Addison, P.E.
ENGINEER OF DESIGN AND ENVIRONMENT

Mar 24 20 17
David L. ...
DIRECTOR OF PROGRAM DEVELOPMENT

**PRINTED BY THE AUTHORITY
OF THE STATE OF ILLINOIS**

CODE NO.	ITEM	UNIT	TOTAL QUANTITY	CONSTR. CODE
				100% STATE URBAN ROADWAY 0005 S.N.
44200050	WELDED WIRE REINFORCEMENT	SQ YD	191	191
44200966	CLASS B PATCHES, TYPE I, 10 INCH	SQ YD	8	8
44200970	CLASS B PATCHES, TYPE II, 10 INCH	SQ YD	763	763
44200976	CLASS B PATCHES, TYPE IV, 10 INCH	SQ YD	92	92
44201047	CLASS B PATCHES, TYPE III, 16 INCH	SQ YD	49	49
44201048	CLASS B PATCHES, TYPE IV, 16 INCH	SQ YD	50	50
44201299	DOWEL BARS 1 1/2"	EACH	2119	2119
44201349	CLASS C PATCHES, TYPE I, 10 INCH	SQ YD	20	20
44201353	CLASS C PATCHES, TYPE II, 10 INCH	SQ YD	140	140
44201357	CLASS C PATCHES, TYPE III, 10 INCH	SQ YD	82	82
44213200	SAW CUTS	FOOT	4855	4855
44213204	TIE BARS 3/4"	EACH	40	40
67100100	MOBILIZATION	LSUM	1	1
70100820	TRAFFIC CONTROL AND PROTECTION, STANDARD 701451	LSUM	1	1
*78001110	PAINT PAVEMENT MARKING - LINE 4"	FOOT	802	802

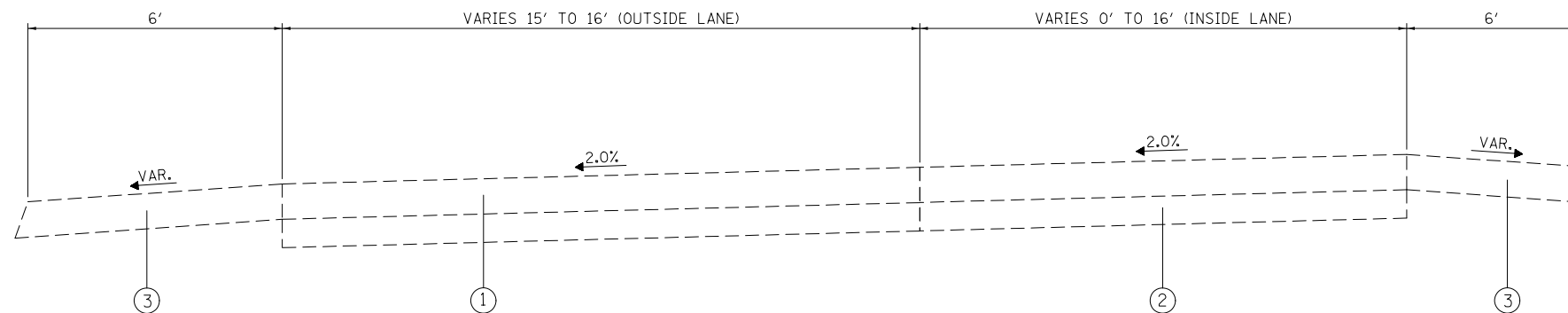
* SPECIALTY ITEM



- ① EXISTING J.P.C.P. PAVEMENT, 10"
- ② EXISTING SUB-BASE GRANULAR MATERIAL, TYPE A 8"
- ③ EXISTING BITUMINOUS SHOULDER 10"±
- ④ EXISTING BITUMINOUS SHOULDER 14"±
- ⑤ EXISTING BITUMINOUS SHOULDER 16"±
- ⑥ EXISTING AGGREGATE SHOULDER
- ⑦ EXISTING HMA RESURFACING, 6"

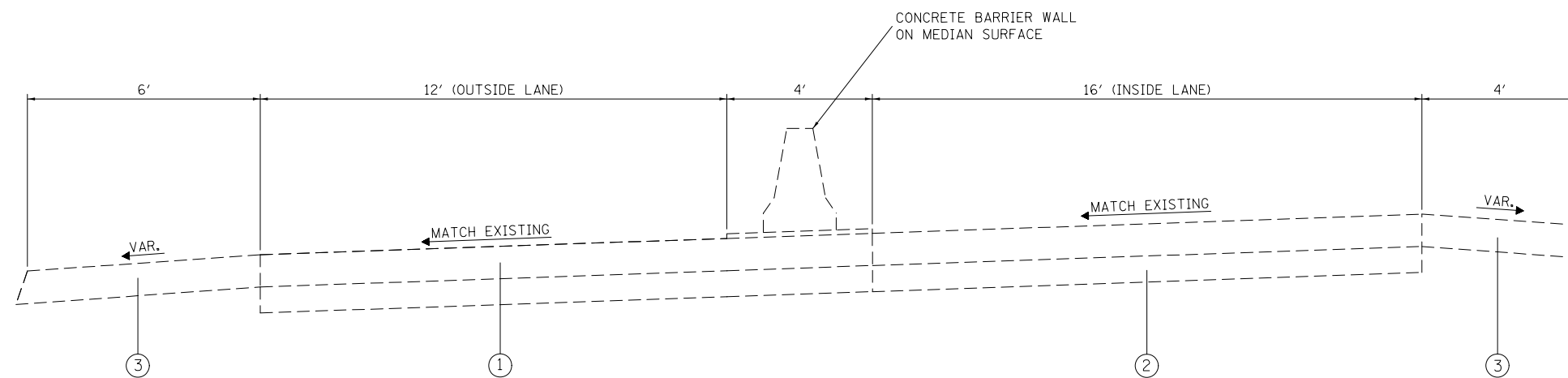
TYPICAL SECTION

STA. 13+50 TO STA. 18+01
 STA. 42+41 TO STA. 45+50



TYPICAL SECTION

STA. 18+01 TO STA. 27+00
 STA. 31+83 TO STA. 42+41



TYPICAL SECTION

STA. 27+00 TO STA. 31+83

FILE NAME =	USER NAME = verdunjl	DESIGNED -	REVISED -
pw:\IL\084EBIDINTEG\illinois.gov\PWIDOT\Documents\DOT Offices\District 8\Projects\0875\Drawings\AD\Sheets\0875K14-sh-typical		CHECKED -	REVISED -
Default	PLOT DATE = 2/6/2017	DATE -	REVISED -

**STATE OF ILLINOIS
 DEPARTMENT OF TRANSPORTATION**

TYPICAL SECTIONS

SCALE: SHEET 1 OF 1 SHEETS STA. TO STA.

F.A.I. RTE.	SECTION	COUNTY	TOTAL SHEETS	SHEET NO.
70	60-8WS-PP-1	MADISON	11	4
CONTRACT NO. 76K14			ILLINOIS FED. AID PROJECT	

CLASS B PATCHING 10 INCH SCHEDULE											
LOCATION	LANE	LENGTH	LANE WIDTH	CLASS B PATCH TYPE I	CLASS B PATCH TYPE II	CLASS B PATCH TYPE III	CLASS B PATCH TYPE IV	DOWEL BARS 1 1/2 inch	TIE BARS	WELDED WIRE REINF.	SAWCUT
		(FT)	(FT)	(SQ YD)	(SQ YD)	(SQ YD)	(SQ YD)	(EACH)	(EACH)	(SQ YD)	(FT)
17	+	98	RAMP	6.0	15.0		10.0	26			57.0
18	+	50	RAMP	6.0	15.0		10.0	26			57.0
19	+	00	RAMP	6.0	16.0		10.7	28			60.0
19	+	50	RAMP	6.0	16.0		10.7	28			60.0
20	+	50	INSIDE	6.0	4.0	2.7		4			24.0
20	+	50	OUTSIDE	6.0	16.0		10.7	28			60.0
21	+	00	INSIDE	6.0	6.0	4.0		8			30.0
21	+	00	OUTSIDE	6.0	16.0		10.7	28			60.0
21	+	47	INSIDE	6.0	8.0		5.3	12			36.0
21	+	47	OUTSIDE	6.0	16.0		10.7	28			60.0
21	+	94	OUTSIDE	6.0	16.0		10.7	28			60.0
21	+	94	INSIDE	6.0	9.0		6.0	14			39.0
22	+	47	OUTSIDE	6.0	16.0		10.7	28			60.0
22	+	47	INSIDE	6.0	10.0		6.7	16			42.0
22	+	73	OUTSIDE	6.0	16.0		10.7	28			60.0
22	+	99	INSIDE	6.0	12.0		8.0	20			48.0
23	+	19	OUTSIDE	6.0	16.0		10.7	28			60.0
23	+	48	INSIDE	6.0	12.0		8.0	20			48.0
23	+	71	OUTSIDE	6.0	16.0		10.7	28			60.0
24	+	12	INSIDE	6.0	14.0		9.3	24			54.0
24	+	12	OUTSIDE	6.0	16.0		10.7	28			60.0
24	+	46	INSIDE	6.0	14.0		9.3	24			54.0
24	+	76	OUTSIDE	6.0	16.0		10.7	28			60.0
24	+	96	INSIDE	6.0	16.0		10.7	28			60.0
25	+	46	INSIDE	6.0	16.0		10.7	28			60.0
25	+	62	INSIDE	6.0	16.0		10.7	28			60.0
25	+	71	OUTSIDE	6.0	16.0		10.7	28			60.0
25	+	98	INSIDE	6.0	16.0		10.7	28			60.0
25	+	98	OUTSIDE	6.0	16.0		10.7	28			60.0
26	+	23	INSIDE	6.0	16.0		10.7	28			60.0
26	+	23	OUTSIDE	6.0	16.0		10.7	28			60.0
26	+	47	INSIDE	6.0	16.0		10.7	28			60.0
26	+	78	OUTSIDE	6.0	16.0		10.7	28			60.0
27	+	97	INSIDE	6.0	16.0		10.7	28			60.0
28	+	31	INSIDE	6.0	16.0		10.7	28			60.0
28	+	48	INSIDE	6.0	16.0		10.7	28			60.0
28	+	76	INSIDE	6.0	16.0		10.7	28			60.0
29	+	10	INSIDE	6.0	16.0		10.7	28			60.0
SUBTOTAL:				6.7	360.7			950			2109.0

*SEE TYPICAL SECTIONS AND PLAN SHEETS FOR LANE DESIGNATIONS

FILE NAME =	USER NAME = verdunjl	DESIGNED -	REVISED -	STATE OF ILLINOIS DEPARTMENT OF TRANSPORTATION	SCHEDULE OF QUANTITIES	F.A.I. RTE.	SECTION	COUNTY	TOTAL SHEETS	SHEET NO.
pw:\IL\084EBIDINTEG.illinois.gov\PIDOT\Documents\DOT Offices\District 8\Projects\0876\Drawings\AD\Sheets\0876K14-sht-schedule	PLLOT SCALE = 100.0000' / in.	CHECKED -	REVISED -			70	60-8WS-PP-1	MADISON	11	5
Default	PLLOT DATE = 2/6/2017	DATE -	REVISED -			SCALE: SHEET 1 OF 4 SHEETS STA. TO STA.		ILLINOIS FED. AID PROJECT CONTRACT NO. 76K14		

CLASS B PATCHING 10 INCH SCHEDULE													
LOCATION			LANE	LENGTH	LANE WIDTH	CLASS B PATCH TYPE I	CLASS B PATCH TYPE II	CLASS B PATCH TYPE III	CLASS B PATCH TYPE IV	DOWEL BARS 1 1/2 inch	TIE BARS	WELDED WIRE REINF.	SAWCUT
				(FT)	(FT)	(SQ YD)	(SQ YD)	(SQ YD)	(SQ YD)	(EACH)	(EACH)	(SQ YD)	(FT)
29	+	74	OUTSIDE	6.0	12.0		8.0			20			48.0
29	+	75	INSIDE	6.0	16.0		10.7			28			60.0
29	+	83	OUTSIDE	6.0	12.0		8.0			20			48.0
31	+	17	OUTSIDE	6.0	12.0		8.0			20			48.0
31	+	33	OUTSIDE	6.0	12.0		8.0			20			48.0
31	+	34	INSIDE	6.0	16.0		10.7			28			60.0
31	+	51	OUTSIDE	6.0	12.0		8.0			20			48.0
32	+	00	OUTSIDE	6.0	12.0		8.0			20			48.0
32	+	50	OUTSIDE	6.0	12.0		8.0			20			48.0
33	+	01	OUTSIDE	6.0	12.0		8.0			20			48.0
33	+	16	OUTSIDE	6.0	16.0		10.7			28			60.0
33	+	52	INSIDE	6.0	12.0		8.0			20			48.0
33	+	92	OUTSIDE	6.0	16.0		10.7			28			60.0
33	+	99	OUTSIDE	6.0	16.0		10.7			28			60.0
34	+	51	INSIDE	6.0	10.0		6.7			16			42.0
34	+	51	OUTSIDE	6.0	16.0		10.7			28			60.0
35	+	00	OUTSIDE	6.0	16.0		10.7			28			60.0
35	+	20	OUTSIDE	6.0	16.0		10.7			28			60.0
36	+	01	OUTSIDE	6.0	16.0		10.7			28			60.0
36	+	24	OUTSIDE	6.0	16.0		10.7			28			60.0
36	+	50	OUTSIDE	6.0	16.0		10.7			28			60.0
36	+	76	OUTSIDE	6.0	16.0		10.7			28			60.0
37	+	51	OUTSIDE	45.0	16.0				80.0	28	22	80.0	138.0
37	+	99	OUTSIDE	6.0	16.0		10.7			28			60.0
38	+	48	RAMP	6.0	16.0		10.7			28			60.0
38	+	96	RAMP	6.0	16.0		10.7			28			60.0
39	+	46	RAMP	6.0	16.0		10.7			28			60.0
39	+	79	RAMP	6.0	16.0		10.7			28			60.0
40	+	44	RAMP	6.0	16.0		10.7			28			60.0
40	+	97	RAMP	6.0	16.0		10.7			28			60.0
41	+	48	RAMP	6.0	16.0		10.7			28			60.0
41	+	96	RAMP	6.0	16.0		10.7			28			60.0
SUBTOTAL:							302.7		80.0	812	22	80.0	1872.0
ANTICIPATED FAILURES (15%):							45.4		12.0	122	4	12.0	280.8
SUBTOTAL (SHEET 5):						6.7	360.7			950			2109.0
ANTICIPATED FAILURES (15%) (SHEET 5):						1.0	54.1			143	0		316.4
TOTAL:						8	763		92	2027	26	92	4578

•SEE TYPICAL SECTIONS AND PLAN SHEETS FOR LANE DESIGNATIONS

CLASS B PATCHING 16 INCH SCHEDULE												
LOCATION	LANE	LENGTH	LANE WIDTH	CLASS B PATCH TYPE I	CLASS B PATCH TYPE II	CLASS B PATCH TYPE III	CLASS B PATCH TYPE IV	DOWEL BARS 1 1/2 inch	TIE BARS	WELDED WIRE REINF.	SAWCUT	
		(FT)	(FT)	(SQ YD)	(SQ YD)	(SQ YD)	(SQ YD)	(EACH)	(EACH)	(SQ YD)	(FT)	
13	+	97	RAMP	26.0	15.0		43.3	24	12	43.3	97.0	
42	+	93	RAMP	12.0	16.0		21.3	28		21.3	72.0	
44	+	76	RAMP	12.0	16.0		21.3	28		21.3	72.0	
SUBTOTAL:							42.7	43.3	80	12	86.0	241.0
ANTICIPATED FAILURES (15%):							6.4	6.5	12	2	12.9	36.2
TOTAL:							49	50	92	14	99	277

CLASS C PATCHING 10 INCH SCHEDULE								
LOCATION	LANE	LENGTH	LANE WIDTH	CLASS C PATCH TYPE I	CLASS C PATCH TYPE II	CLASS C PATCH TYPE III	CLASS C PATCH TYPE IV	
		(FT)	(FT)	(SQ. YD.)	(SQ. YD.)	(SQ. YD.)	(SQ. YD.)	
21	+	69	INSIDE	41.0	3.0		13.7	
21	+	69	OUTSIDE	41.0	3.0		13.7	
22	+	20	INSIDE	47.0	3.0		15.7	
22	+	20	OUTSIDE	47.0	3.0		15.7	
23	+	07	OUTSIDE	17.0	3.0		5.7	
23	+	11	INSIDE	17.0	3.0		5.7	
23	+	91	INSIDE	35.0	3.0		11.7	
23	+	91	OUTSIDE	35.0	3.0		11.7	
26	+	35	INSIDE	18.0	3.0		6.0	
26	+	35	OUTSIDE	18.0	3.0		6.0	
28	+	15	INSIDE	6.0	6.0	4.0		
30	+	37	INSIDE	36.0	6.0		24.0	
30	+	71	INSIDE	6.0	6.0	4.0		
33	+	99	INSIDE	24.0	6.0		16.0	
34	+	75	INSIDE	41.0	3.0		13.7	
34	+	75	OUTSIDE	41.0	3.0		13.7	
35	+	10	INSIDE	14.0	3.0	4.7		
35	+	10	OUTSIDE	14.0	3.0	4.7		
35	+	44	INSIDE	30.0	3.0		10.0	
35	+	44	OUTSIDE	30.0	3.0		10.0	
SUBTOTAL:						17.3	121.3	71.3
ANTICIPATED FAILURES (15%):						2.6	18.2	10.7
TOTAL:						20	140	82

•SEE TYPICAL SECTIONS AND PLAN SHEETS FOR LANE DESIGNATIONS

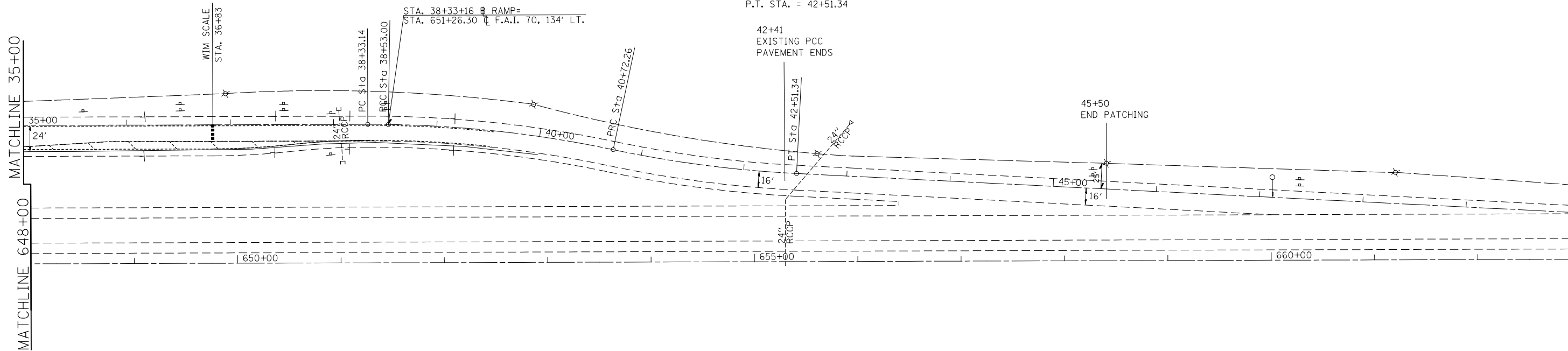
FILE NAME =	USER NAME = verdunjl	DESIGNED -	REVISED -	STATE OF ILLINOIS DEPARTMENT OF TRANSPORTATION	SCHEDULE OF QUANTITIES			F.A.I. RTE.	SECTION	COUNTY	TOTAL SHEETS	SHEET NO.
pw:\IL\084EBIDINTEG.illinois.gov\PIDOT\Documents\DOT Offices\District 8\Projects\0875\Drawings\EA\Drawings\0875-14-sht-sched.dwg	PLLOT SCALE = 100.0000' / in.	CHECKED -	REVISED -					70	60-8WS-PP-1	MADISON	11	7
Default	PLLOT DATE = 2/6/2017	DATE -	REVISED -		SCALE: SHEET 3 OF 4 SHEETS STA. TO STA.			CONTRACT NO. 76K14				
							ILLINOIS FED. AID PROJECT					



EXIST. CURVE RAMPBL-13
 PI STA. = 38+43.07
 $\Delta = 1^\circ 00' 18''$ (RT)
 D = 5° 03' 39"
 R = 1,132.13'
 T = 9.93'
 L = 19.86'
 E = 0.04'
 e = -----
 T.R. = -----
 S.E. RUN = -----
 P.C. STA. = 38+33.14
 P.T. STA. = 38+53.00

EXIST. CURVE RAMPBL-14
 PI STA. = 39+62.97
 $\Delta = 11^\circ 05' 47''$ (RT)
 D = 5° 03' 39"
 R = 1,132.13'
 T = 109.97'
 L = 219.26'
 E = 5.33'
 e = -----
 T.R. = -----
 S.E. RUN = -----
 P.C. STA. = 38+53.00
 P.T. STA. = 40+72.26

EXIST. CURVE RAMPBL-15
 PI STA. = 41+61.99
 $\Delta = 9^\circ 03' 45''$ (LT)
 D = 5° 03' 37"
 R = 1,132.24'
 T = 89.73'
 L = 179.09'
 E = 3.55'
 e = -----
 T.R. = -----
 S.E. RUN = -----
 P.C. STA. = 40+72.26
 P.T. STA. = 42+51.34



*NOT TO SCALE

FILE NAME =	USER NAME = verdunjl	DESIGNED -	REVISED -
pw:\IL\084EBIDINTEG.illinois.gov\PWIDOT\Documents\IDOT Offices\District 8\Projects\08750\Drawings\EA\Drawings\08750-14-shr-plan.dwg		CHECKED -	REVISED -
Default	PLOT DATE = 2/6/2017	DATE -	REVISED -

**STATE OF ILLINOIS
 DEPARTMENT OF TRANSPORTATION**

PLAN SHEET

SCALE: SHEET 3 OF 3 SHEETS STA. TO STA.

F.A.I. RTE.	SECTION	COUNTY	TOTAL SHEETS	SHEET NO.
70	60-8WS-PP-1	MADISON	11	11
ILLINOIS FED. AID PROJECT			CONTRACT NO. 76K14	