

STATE OF ILLINOIS
DEPARTMENT OF TRANSPORTATION

F.A.P. RTE.	SECTION	COUNTY	TOTAL SHEETS	SHEET NO.
VAR.	DIST 8 SEAL COAT 2023-1	VARIOUS	18	1
		ILLINOIS	CONTRACT NO. 76R60	

PROPOSED HIGHWAY PLANS

VARIOUS ROUTES
SECTION DIST 8 SEAL COAT 2023-1
BITUMINOUS SURFACE TREATMENT – A2
VARIOUS COUNTIES

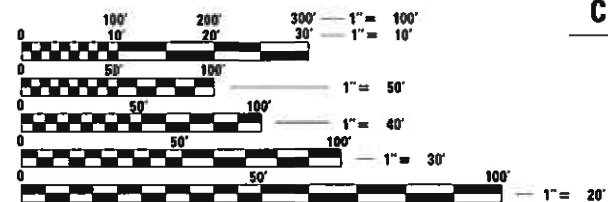
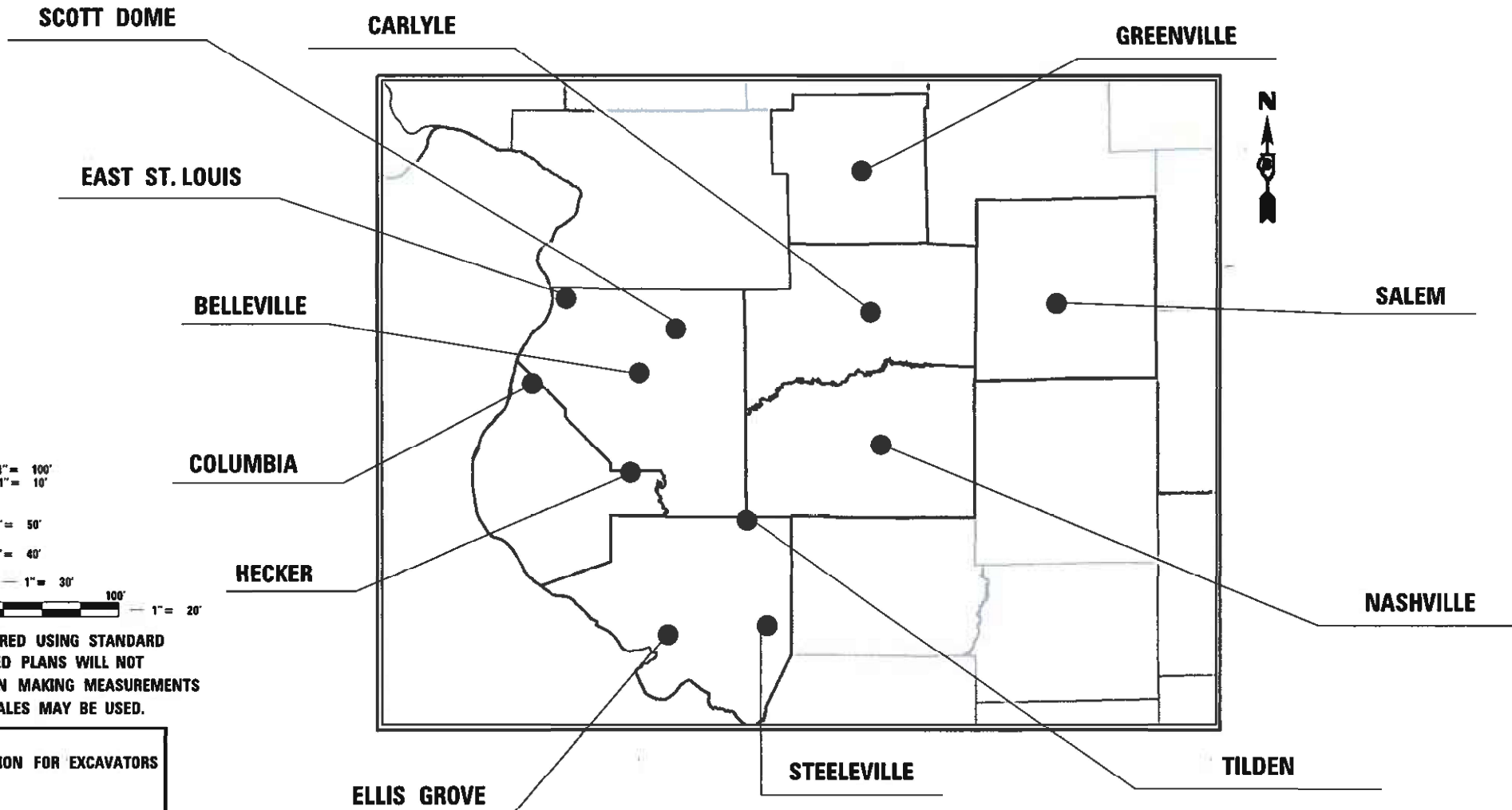
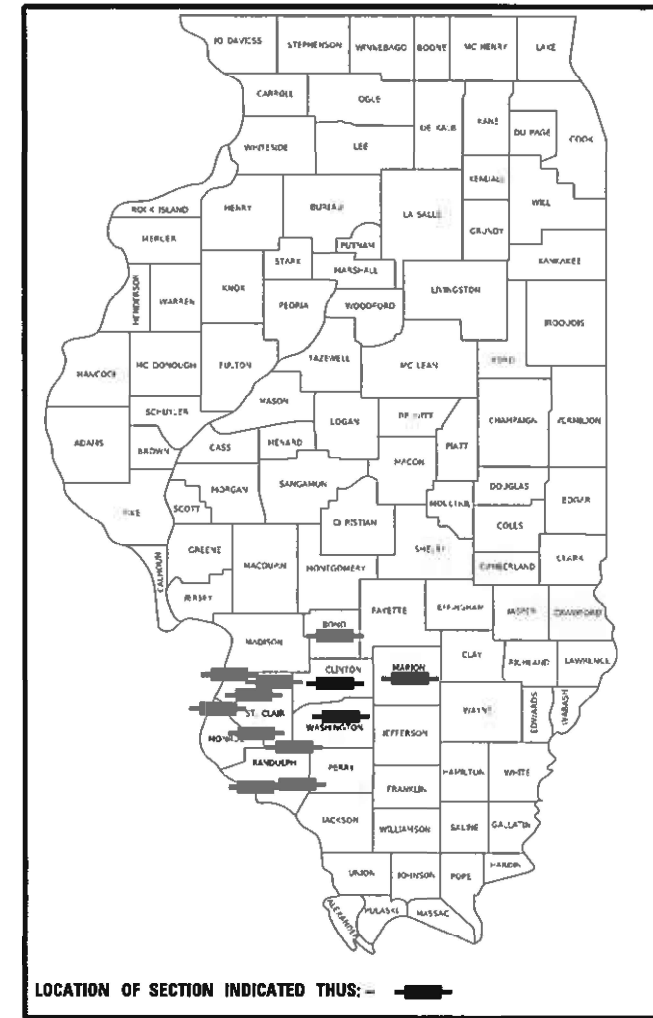
C-98-135-22

FOR INDEX OF SHEETS, SEE SHEET NO. 2

TRAFFIC DATA

NA

D-98-103-22



FULL SIZE PLANS HAVE BEEN PREPARED USING STANDARD ENGINEERING SCALES. REDUCED SIZED PLANS WILL NOT CONFORM TO STANDARD SCALES. IN MAKING MEASUREMENTS ON REDUCED PLANS, THE ABOVE SCALES MAY BE USED.

J.U.L.I.E.
JOINT UTILITY LOCATION INFORMATION FOR EXCAVATORS
1-800-892-0123
OR 811

PROJECT ENGINEER CHERYL KEPLAR
PROJECT MANAGER KAREN CHALLANDES

CONTRACT NO. 76R60

STATE OF ILLINOIS
DEPARTMENT OF TRANSPORTATION

SUBMITTED Feb. 8 2023
Kirk Brown REGIONAL ENGINEER
March 24, 2023 S. E. A. ETS
ENGINEER OF DESIGN AND ENVIRONMENT

March 24, 2023 Stephen M. Lewis
DIRECTOR OF HIGHWAYS PROJECT IMPLEMENTATION

PRINTED BY THE AUTHORITY
OF THE STATE OF ILLINOIS

INDEX OF SHEETS

- 1. COVER SHEET
- 2. INDEX OF SHEETS, HIGHWAY STANDARDS, GENERAL NOTES, AND COMMITMENTS
- 3. SUMMARY OF QUANTITIES
- 4-18 YARD LOCATIONS

HIGHWAY STANDARDS

- 001006 DECIMAL OF AN INCH AND OF A FOOT
- 000001-08 STANDARD SYMBOLS, ABBREVIATIONS, & PATTERNS
- 701001-02 OFF-ROAD OPERATIONS, 2L, 2W MORE THAN 15' (4.5M) AWAY
- 701006-05 OFF-ROAD OPERATIONS, 2L, 2W, 15' (4.5M) TO 24" (600mm) FROM PAVEMENT
- 701301-04 EDGE LANE CLOSURE, 2L, 2W, SHORT TIME OPERATIONS
- 701901-08 TRAFFIC CONTROL DEVICES

GENERAL NOTES

- 1 THE DEPARTMENT STRONGLY ENCOURAGES THE PRIME CONTRACTOR AND THEIR APPROVED SUB-CONTRACTORS TO HIRE MINORITY, WOMEN AND DISADVANTAGED INDIVIDUALS FROM ITS FEDERALLY FUNDED HIGHWAY CONSTRUCTION CAREERS TRAINING PROGRAM (HCCTP) TO HELP MEET WORKFORCE AND TRAINEE GOALS. THIS PROGRAM IS TRAINING MINORITY, WOMEN AND DISADVANTAGED INDIVIDUALS IN HIGHWAY CONSTRUCTION RELATED SKILLS, E.G., MATH FOR THE TRADES, JOB READINESS, TECHNICAL SKILLS COURSEWORK (CARPENTRY, CONCRETE FLATWORK, BLUEPRINT READING, SITE PLANS, SITE WORK, TOOLS USE, ETC.) AND OSHA 10 HOUR CERTIFICATION, TO PREPARE THEM FOR A CAREER IN THE HIGHWAY CONSTRUCTION TRADES, GRADUATES ARE WELL-TRAINED AND READY TO BECOME PRODUCTIVE ENTRY-LEVEL CONSTRUCTION WORKERS. CONTACT THE DISTRICT 8 EEO OFFICE AT 618-346-3360 AND OR THE HCCTP COORDINATOR AT 618-874-6528 TO LEARN MORE ABOUT THE PROGRAM AND FOR ASSISTANCE IN MEETING WORKFORCE AND TRAINEE GOALS.
- 2 AS STATED IN THE BDE MANUAL, FOG COAT IS NOT REQUIRED ON AREAS WITH ADT LESS THAN 1000 AND ITS NOT INCLUDED IN THIS CONTRACT.
- 3 UTILITIES KNOWN TO HAVE FACILITIES WITHIN THE PROJECT AREA:

Columbia Yard	Tilden Yard
Ameren Illinois	Ameren Illinois
Charter Communications	Clearwave Communications
Columbia, City of	Egyptian Electric Coop
Clearwave Communicaitons	Egyptian Telephone Coop
Harrisonville Telephone	Newwave Communications
	Frontier Communication
East St. Louis Yard	Kaskaskia Water District
Ameren Illinois	Tilden, Village of
AT & T	
Charter Communications	Belleville Yard
Everstream GLC Holding Company LLC	Ameren Illinois
East St. Louis, City of	AT & T Illinois
Illinois American Water Company	Belleville, City of
Level 3 Communicaitons, LLC	Charter Communications, Inc.
MCI	Illinois American Water
Zayo Group LLC	
Bluebird Network	Carlyle Yard
	Ameren Illinois
Ellis Grove Yard	Ameren Illinois
Ameren Illinois	AT&T Illinois
Ameren Illinois	Charter Communications
Chester, City of	Carlyle, City of
Frontier Communications	
Greenville Yard	Salem Yard
Ameren Illinois	Ameren Illinois
AT & T Illinois	AT & T Illinois
Clearwave Communications	Charter Communications
Computer Techniques	Salem, City of
NewWave Communications	Wabash Communications
Greenville, City of	
	Scott Dome, O'Fallon/Shiloh
Hecker Yard	Ameren Illinois
Ameren Illinois	AT & T Illinois
AT&T Illinois	Charter Communications
Hecker, Village of	Clearwave Communications
Mediacom	O'Fallon, City of
Nashville Yard	Steelville Yard
Ameren Illinois	Ameren Illinois
AT&T Illinois	Frontier Communications (South)
Charter	Steeleville, Village of
Clearwave Communicaitons	Newwave Communications
Nashville, City of	

COMMITMENTS

NONE

SURFACE TREATMENT

LOCATION	BITUMINOUS SURFACE TREATMENT, A2 SQ YD
BELLEVILLE	7100
SCOTT DOME	11500
CARLYLE	10600
GREENVILLE	9400
STEELEVILLE	7800
SALEM	10000
NASHVILLE	8300
ELLIS GROVE	950
TILDEN	800
EAST ST. LOUIS	32170
COLUMBIA	16944
HECKER	7025
TOTAL	122,589

REV. - MS

MODEL: D:\default...
 FILE: M:\as...
 PROJECT: DISTRICT 8...

USER NAME = Karen.Challandes	DESIGNED -	REVISED -
	DRAWN -	REVISED -
PLOT SCALE = 100.0000' / in.	CHECKED -	REVISED -
PLOT DATE = 2/10/2023	DATE -	REVISED -

**STATE OF ILLINOIS
DEPARTMENT OF TRANSPORTATION**

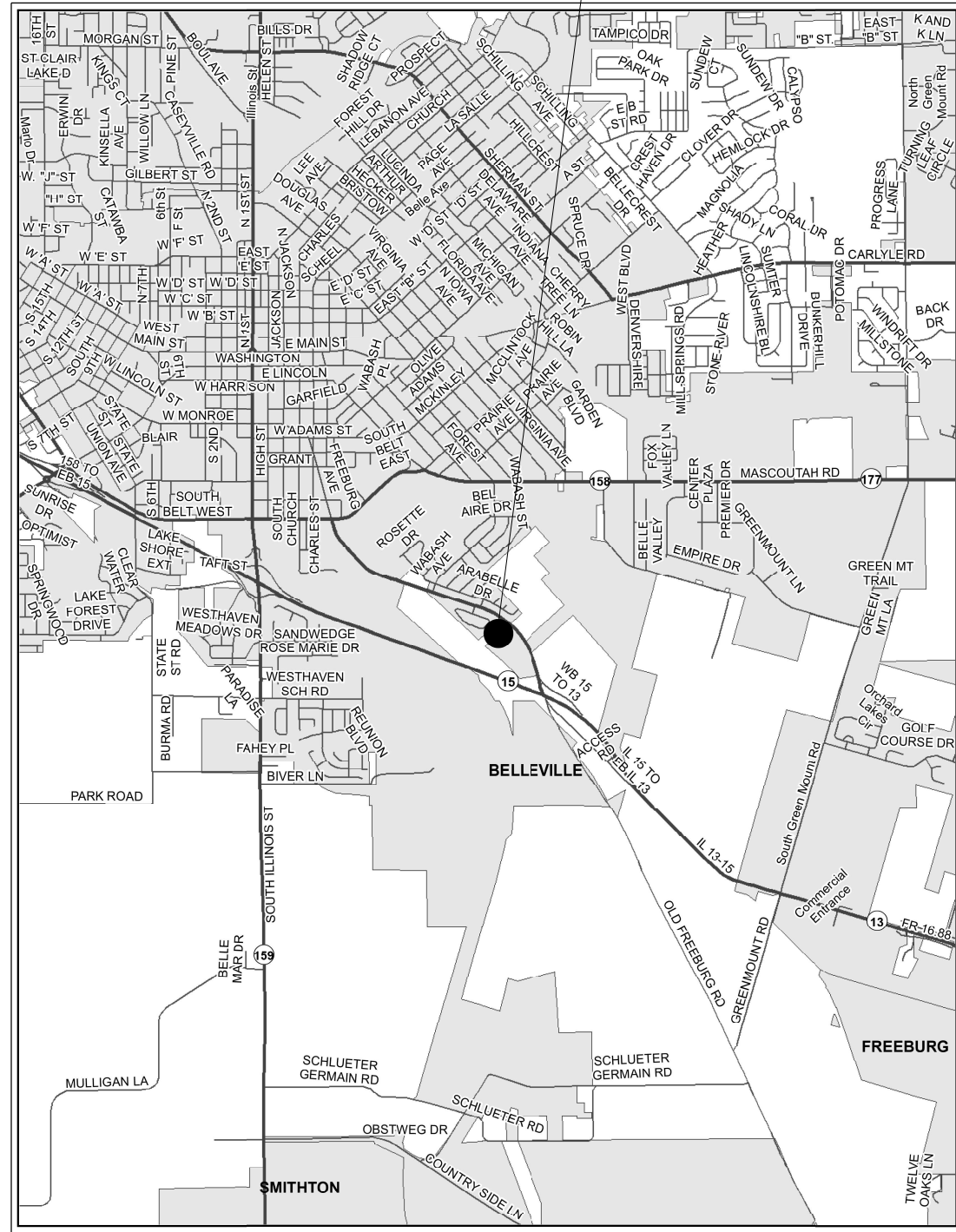
**INDEX OF SHEETS, HIGHWAY STANDARDS,
GENERAL NOTES, COMMITMENTS, AND SCHEDULE**

SCALE: SHEET OF SHEETS STA. TO STA.

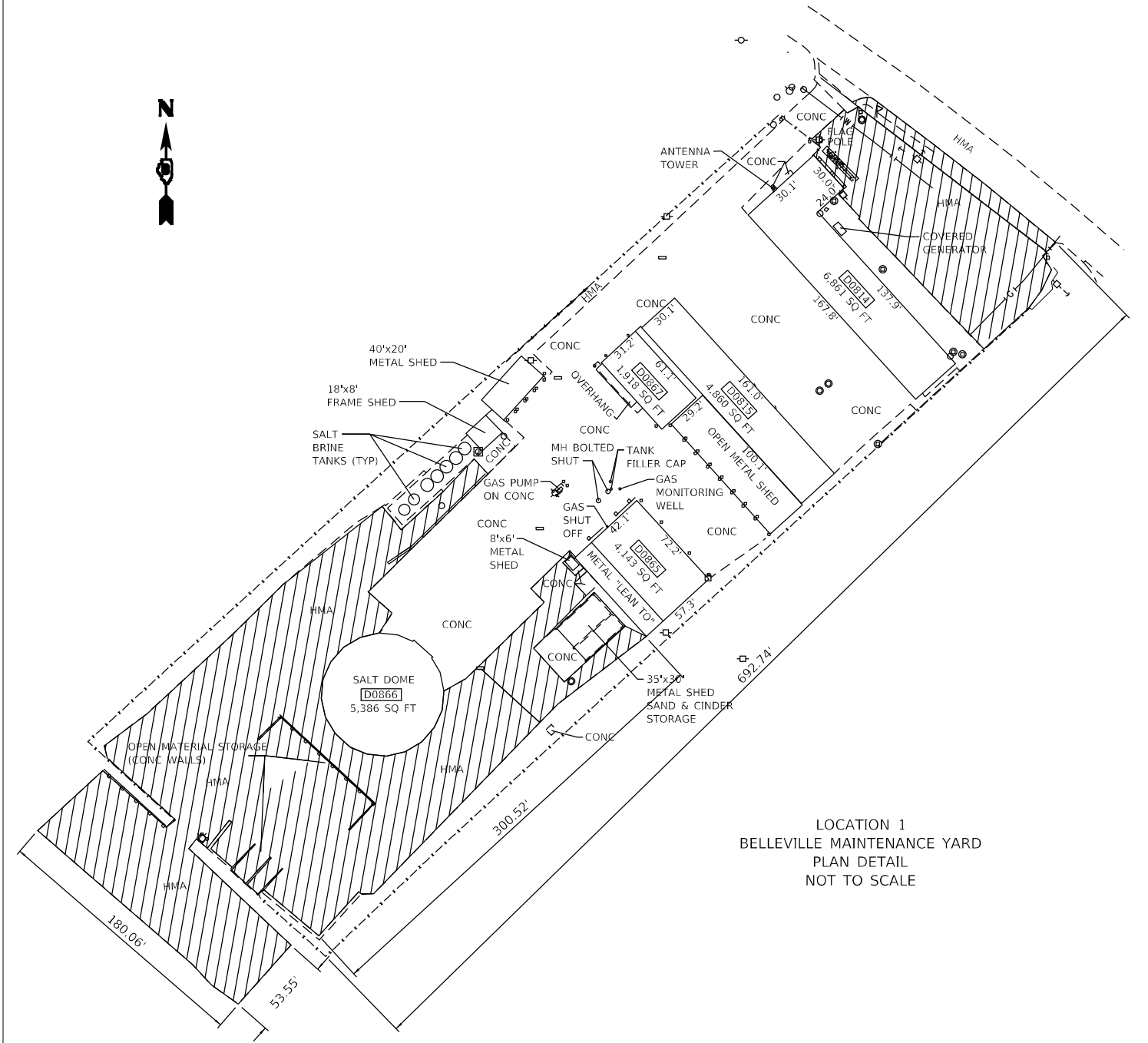
F.A.P. RTE.	SECTION	COUNTY	TOTAL SHEETS	SHEET NO.
VAR.	DIST 8 SEAL COAT 2023-1	VARIOUS	18	2
			CONTRACT NO. 76R60	
ILLINOIS FED. AID PROJECT				



BELLEVILLE MAINTENANCE YARD
2107 FREEBURG AVE.
BELLEVILLE, IL 62220



LOCATION MAP



LOCATION 1
BELLEVILLE MAINTENANCE YARD
PLAN DETAIL
NOT TO SCALE

BITUMINOUS SURFACE TREATMENT, A2 = 7100 SQ YD

BITUMINOUS SURFACE TREATMENT, A2

MODEL: Default
 FILE NAME: p:\project\10876860\CADD\10876860\CADD\10876860\10876860.dgn
 PROJECT: 10876860\CADD\10876860\CADD\10876860\10876860.dgn

USER NAME = Karen.Challandes	DESIGNED -	REVISED -
DRAWN -	REVISED -	
PLOT SCALE = 100,0000' / in.	CHECKED -	REVISED -
PLOT DATE = 2/8/2023	DATE -	REVISED -

STATE OF ILLINOIS
DEPARTMENT OF TRANSPORTATION

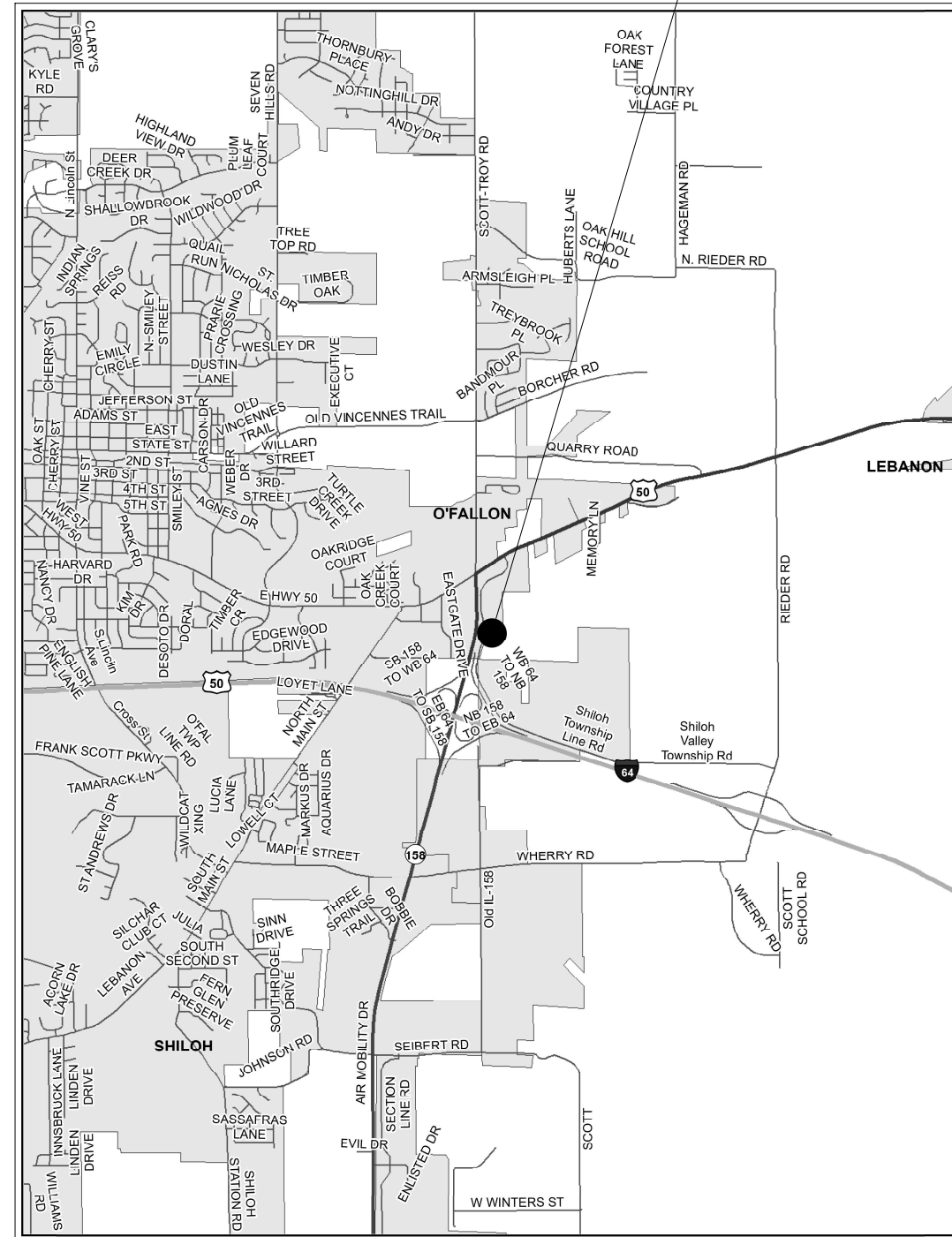
LOCATION 1
BELLEVILLE MAINTENANCE YARD

SCALE: SHEET OF SHEETS STA. TO STA.

F.A.P. RTE.	SECTION	COUNTY	TOTAL SHEETS	SHEET NO.
VAR.	DIST 8 SEAL COAT 2023-1	VARIOUS	18	4
			CONTRACT NO. 76R60	
		ILLINOIS	FED. AID PROJECT	



SCOTT DOME MAINTENANCE YARD
 8313 SHILOH VALLEY TOWNSHIP LINE ROAD
 LEBANON, IL 62254



LOCATION MAP

MODEL: Default
 FILE NAME: p:\build\sw_beaufay.com\PIV\DOT\Documents\DOT_office\Drawings\Project\0876860\CADD\Sheet\0876860-shiloh.dgn

USER NAME = Karen.Challandes	DESIGNED -	REVISED -
	DRAWN -	REVISED -
PLOT SCALE = 100,0000' / in.	CHECKED -	REVISED -
PLOT DATE = 2/8/2023	DATE -	REVISED -

STATE OF ILLINOIS
 DEPARTMENT OF TRANSPORTATION

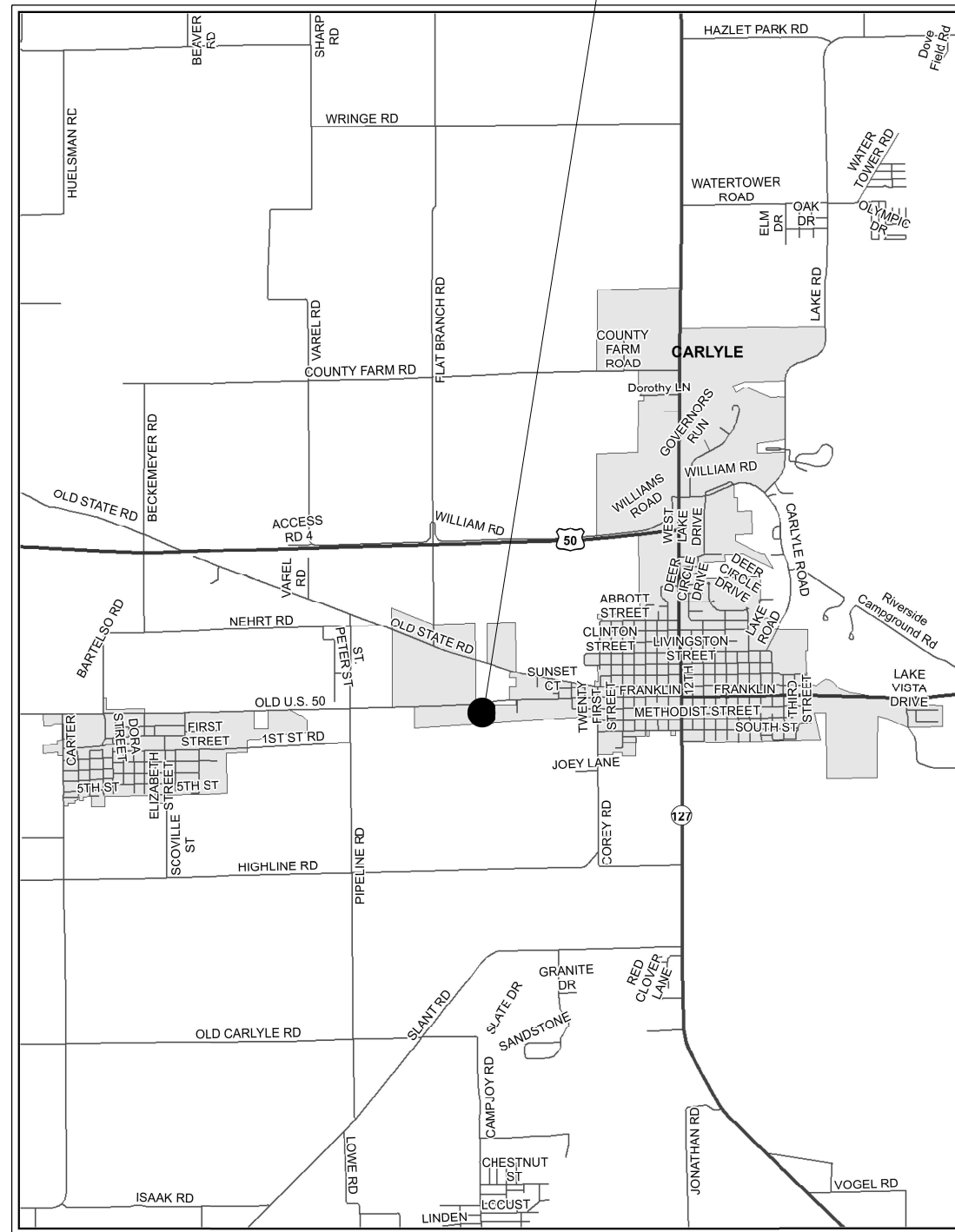
LOCATION 2
 SCOTT DOME MAINTENANCE YARD LOCATION MAP

SCALE: SHEET OF SHEETS STA. TO STA.

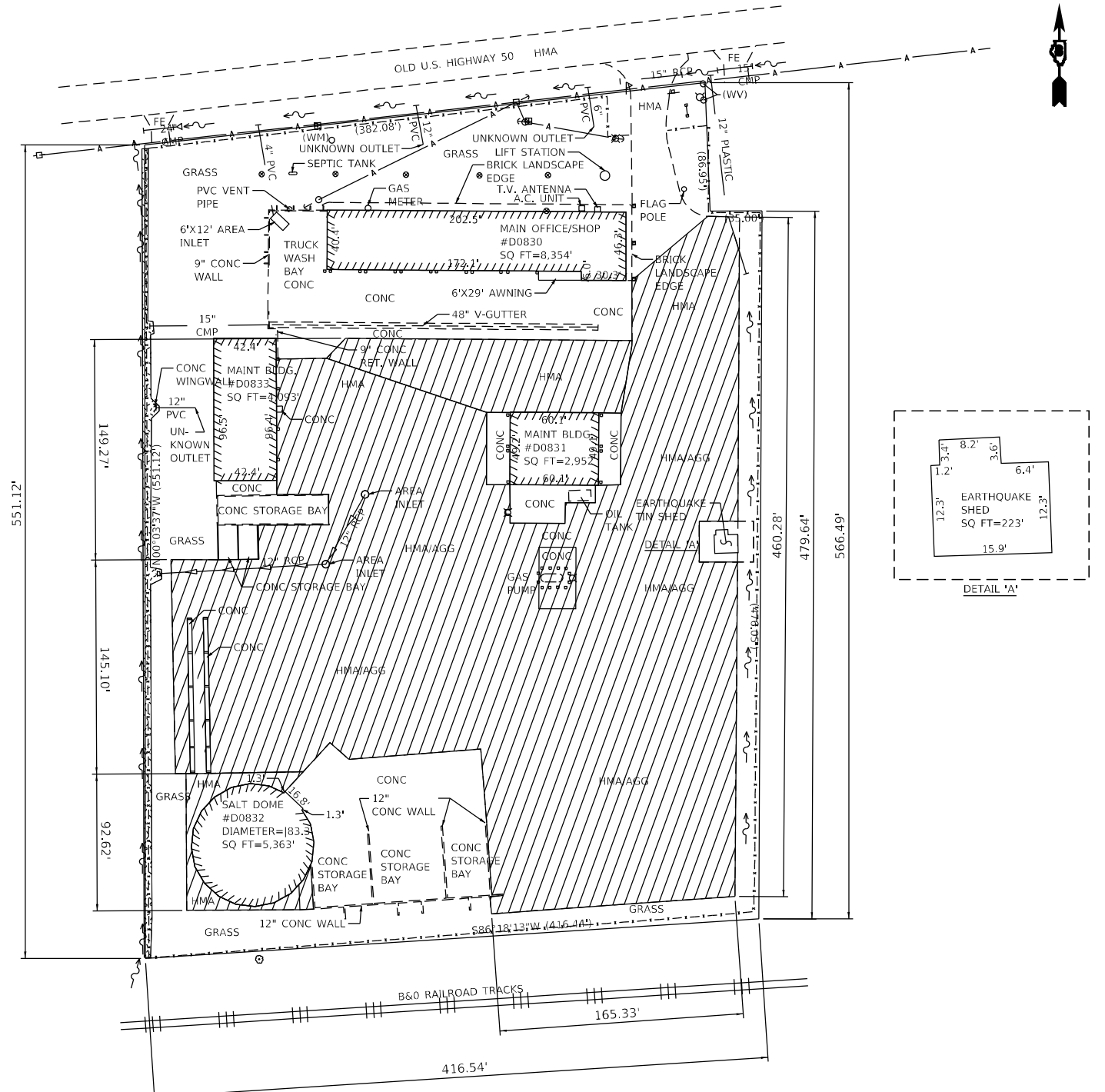
F.A.P. RTE.	SECTION	COUNTY	TOTAL SHEETS	SHEET NO.
VAR.	DIST 8 SEAL COAT 2023-1	VARIOUS	18	5
			CONTRACT NO. 76R60	
		ILLINOIS FED. AID PROJECT		



CARLYLE MAINTENANCE YARD
16800 OLD US 50
CARLYLE, IL 62231



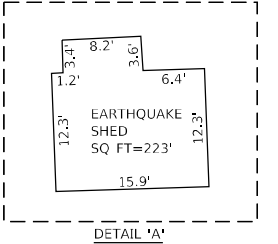
LOCATION MAP



LOCATION 3
CARLYLE MAINTENANCE YARD
PLAN DETAIL
NOT TO SCALE

BITUMINOUS SURFACE TREATMENT, A2 = 10,600 SQ YD

BITUMINOUS SURFACE TREATMENT, A2



MODEL: Default
 FILE: 144165_20230808.ctb
 PROJECT: D:\Projects\10876860\CADD\10876860\CADD\10876860.ctb
 USER: Karen.Challandes

USER NAME = Karen.Challandes	DESIGNED -	REVISED -
DRAWN -	REVISED -	REVISED -
PLOT SCALE = 100,0000' / in.	CHECKED -	REVISED -
PLOT DATE = 2/8/2023	DATE -	REVISED -

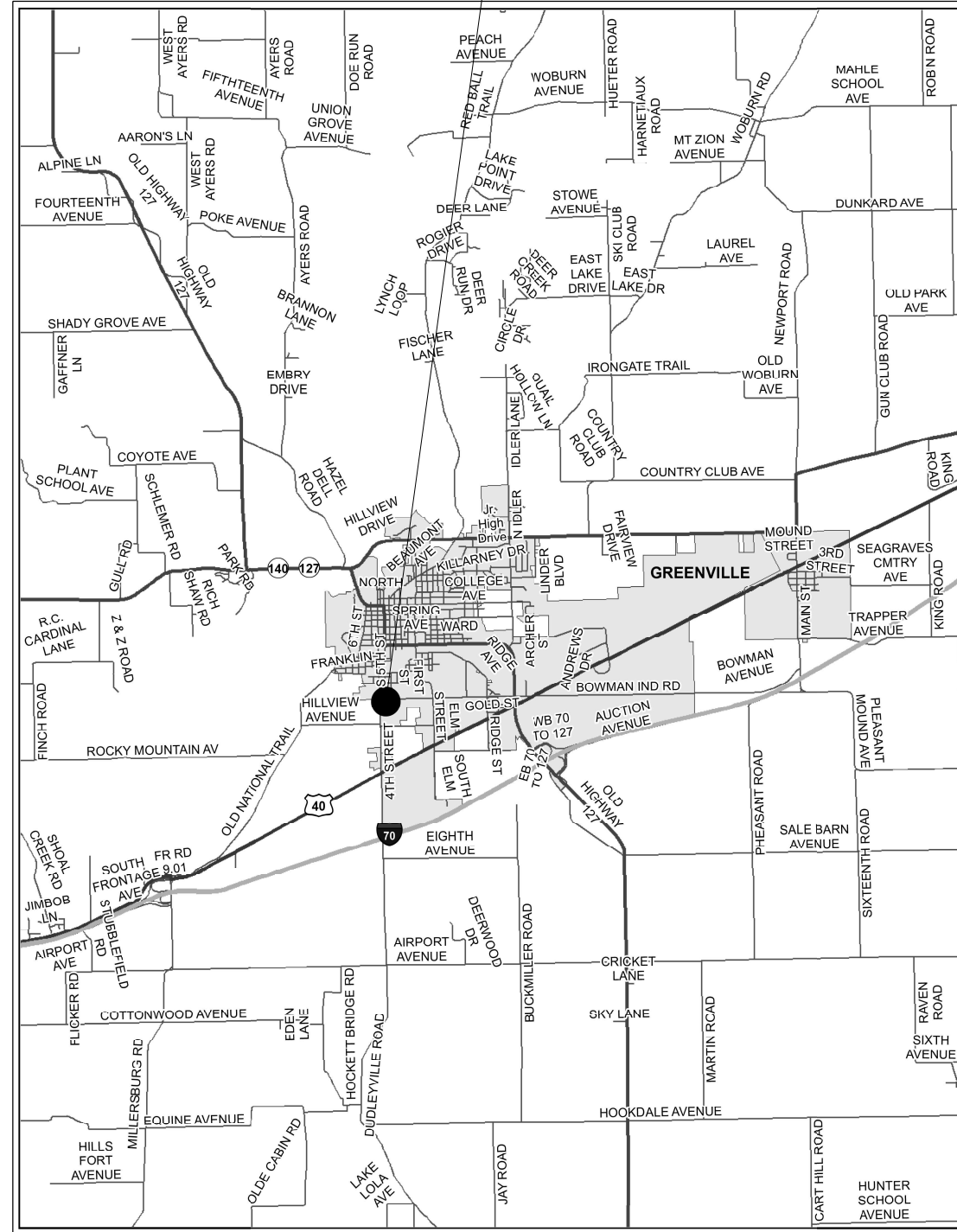
STATE OF ILLINOIS
DEPARTMENT OF TRANSPORTATION

LOCATION 3 CARLYLE MAINTENANCE YARD			
SCALE:	SHEET	OF SHEETS	STA. TO STA.

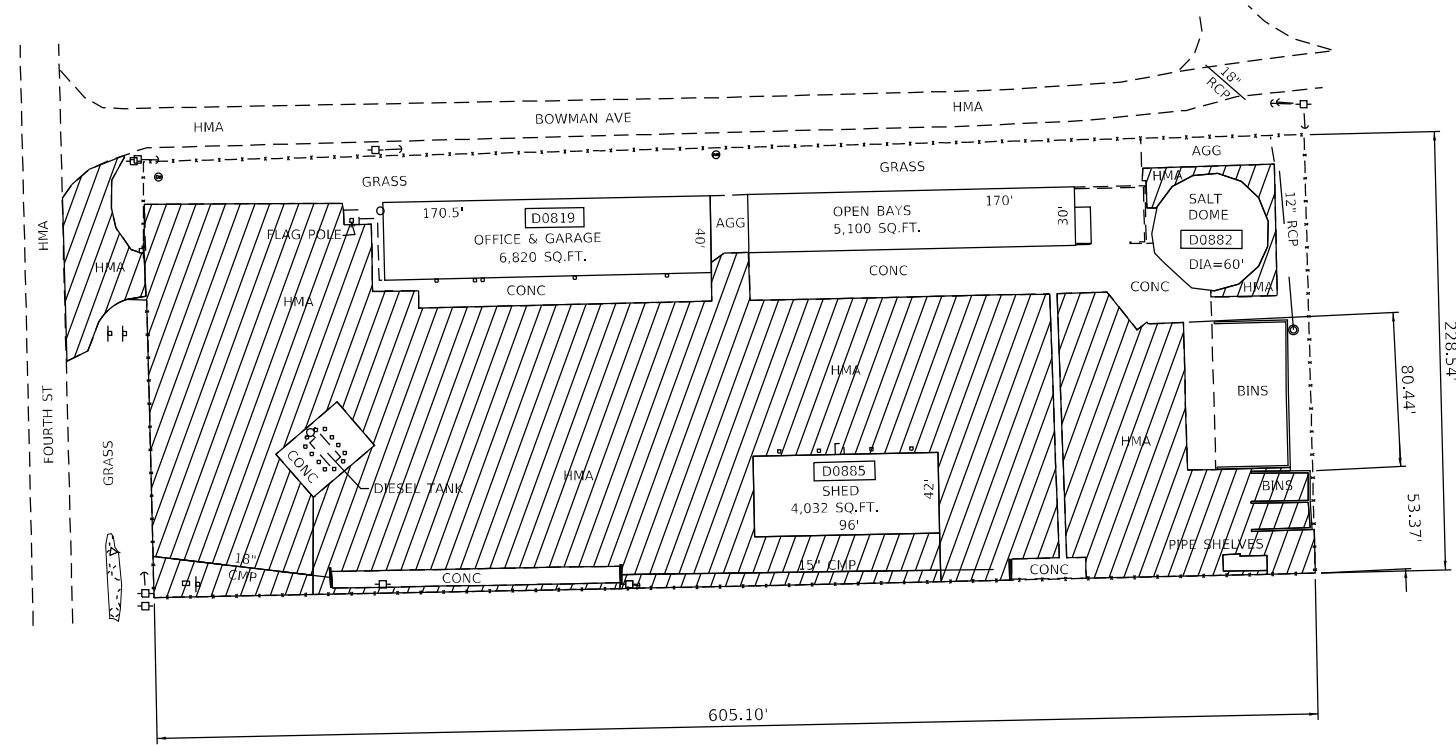
F.A.P. RTE.	SECTION	COUNTY	TOTAL SHEETS	SHEET NO.
VAR.	DIST 8 SEAL COAT 2023-1	VARIOUS	18	7
CONTRACT NO. 76R60				
ILLINOIS		FED. AID PROJECT		



GREENVILLE MAINTENANCE YARD
1500 SOUTH 4TH STREET
GREENVILLE, IL 62246

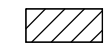


LOCATION MAP



LOCATION 4
GREENVILLE MAINTENANCE YARD
PLAN DETAIL
NOT TO SCALE

BITUMINOUS SURFACE TREATMENT, A2 = 9400 SQ YD

 BITUMINOUS SURFACE TREATMENT, A2

MODEL: Default
 FILE NAME: p:\project\76660\CADD\131\CADD\sheet\0876660.dwg
 PROJECT: 0876660\CADD\131\CADD\sheet\0876660.dwg

USER NAME = Karen.Challandes	DESIGNED -	REVISED -
	DRAWN -	REVISED -
PLOT SCALE = 100,0000' / in.	CHECKED -	REVISED -
PLOT DATE = 2/8/2023	DATE -	REVISED -

**STATE OF ILLINOIS
DEPARTMENT OF TRANSPORTATION**

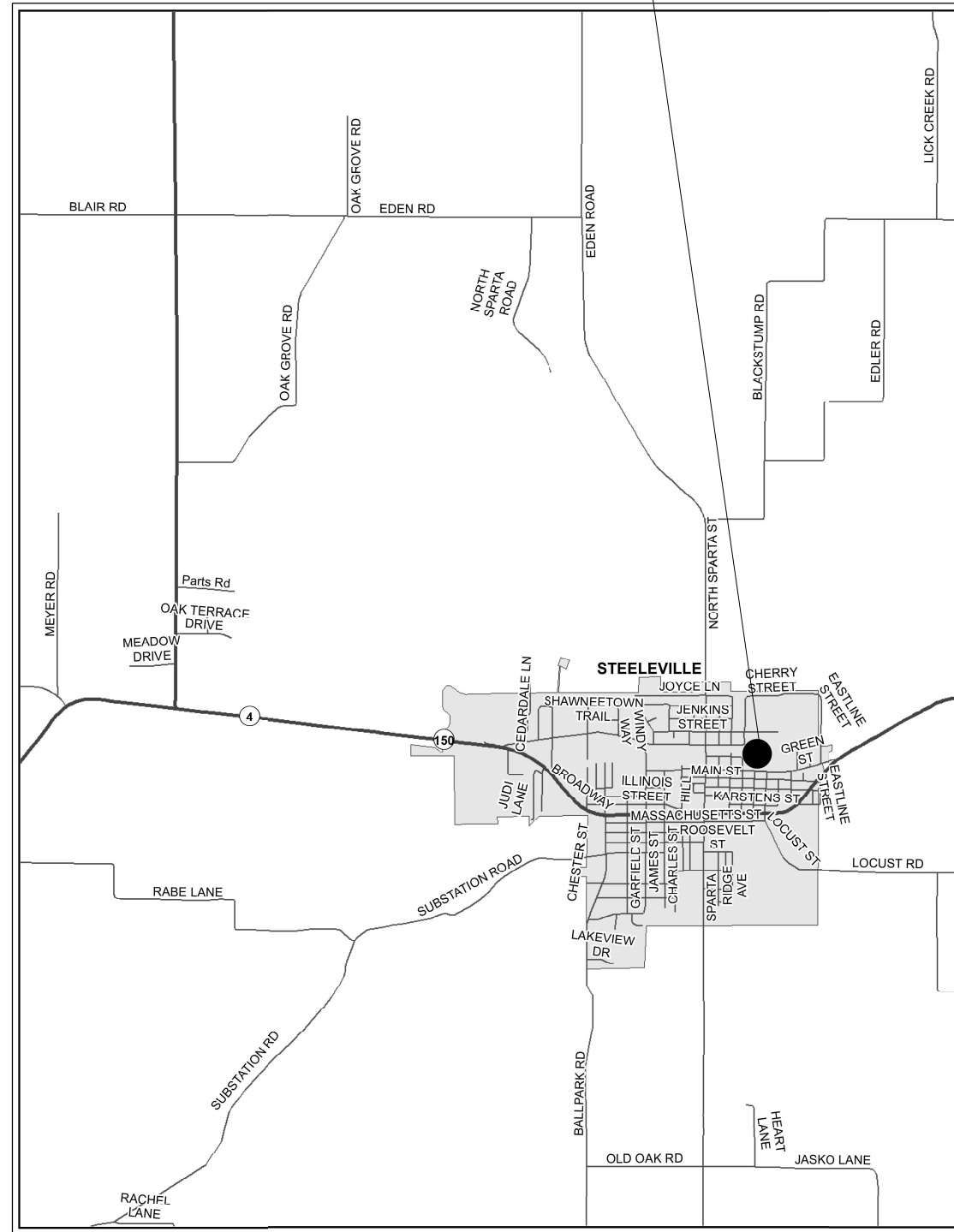
**LOCATION 4
GREENVILLE MAINTENANCE YARD**

SCALE: SHEET OF SHEETS STA. TO STA.

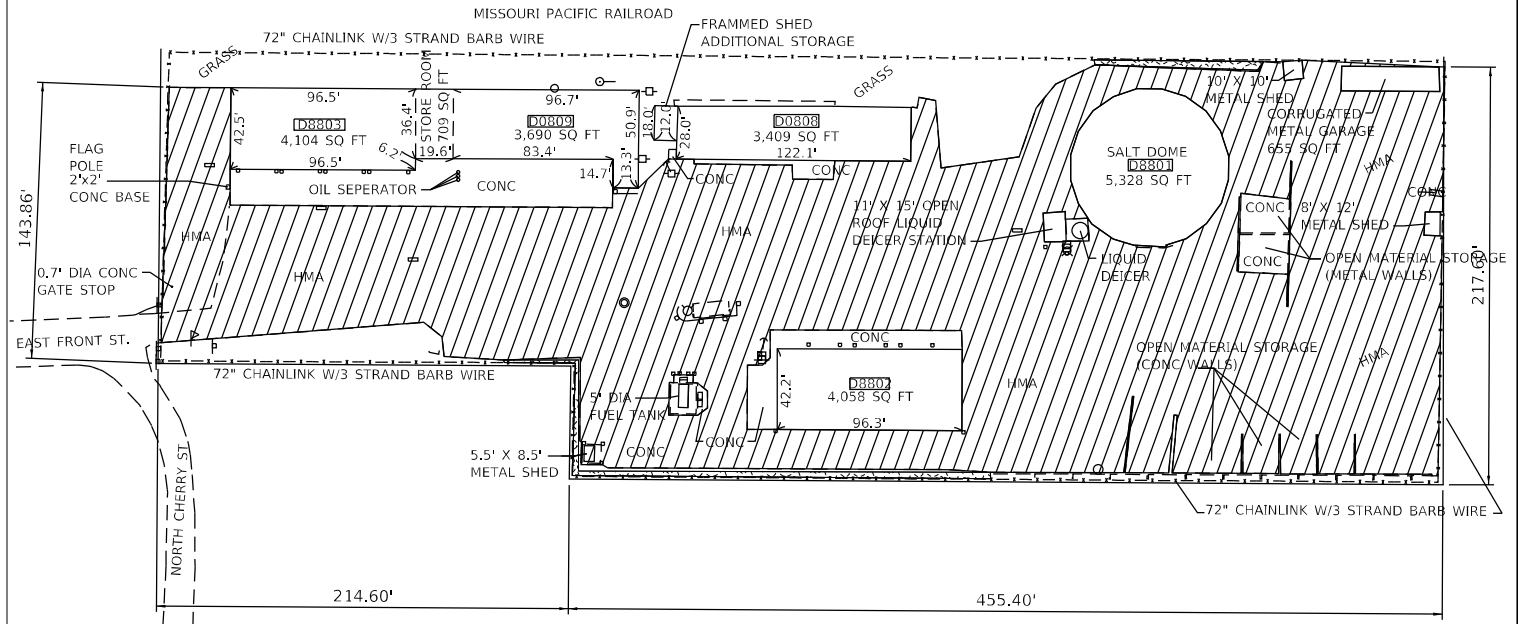
F.A.P. RTE.	SECTION	COUNTY	TOTAL SHEETS	SHEET NO.
VAR.	DIST 8 SEAL COAT 2023-1	VARIOUS	18	8
			CONTRACT NO. 76R60	
		ILLINOIS	FED. AID PROJECT	



STEELEVILLE MAINTENANCE YARD
700 NORTH CHERRY
STEELEVILLE, IL 62288



LOCATION MAP



LOCATION 5
STEELEVILLE MAINTENANCE YARD
PLAN DETAIL
NOT TO SCALE

BITUMINOUS SURFACE TREATMENT, A2 = 7800 SQ YD

BITUMINOUS SURFACE TREATMENT, A2

MODEL: Default
 FILE: 3dmodel.pwd
 PROJECT: D:\Projects\10876660\CADD\10876660\CADD\Sheet\10876660-ctb-ctb.dgn

USER NAME = Karen.Challandes	DESIGNED -	REVISED -
	DRAWN -	REVISED -
PLOT SCALE = 100,0000' / in.	CHECKED -	REVISED -
PLOT DATE = 2/8/2023	DATE -	REVISED -

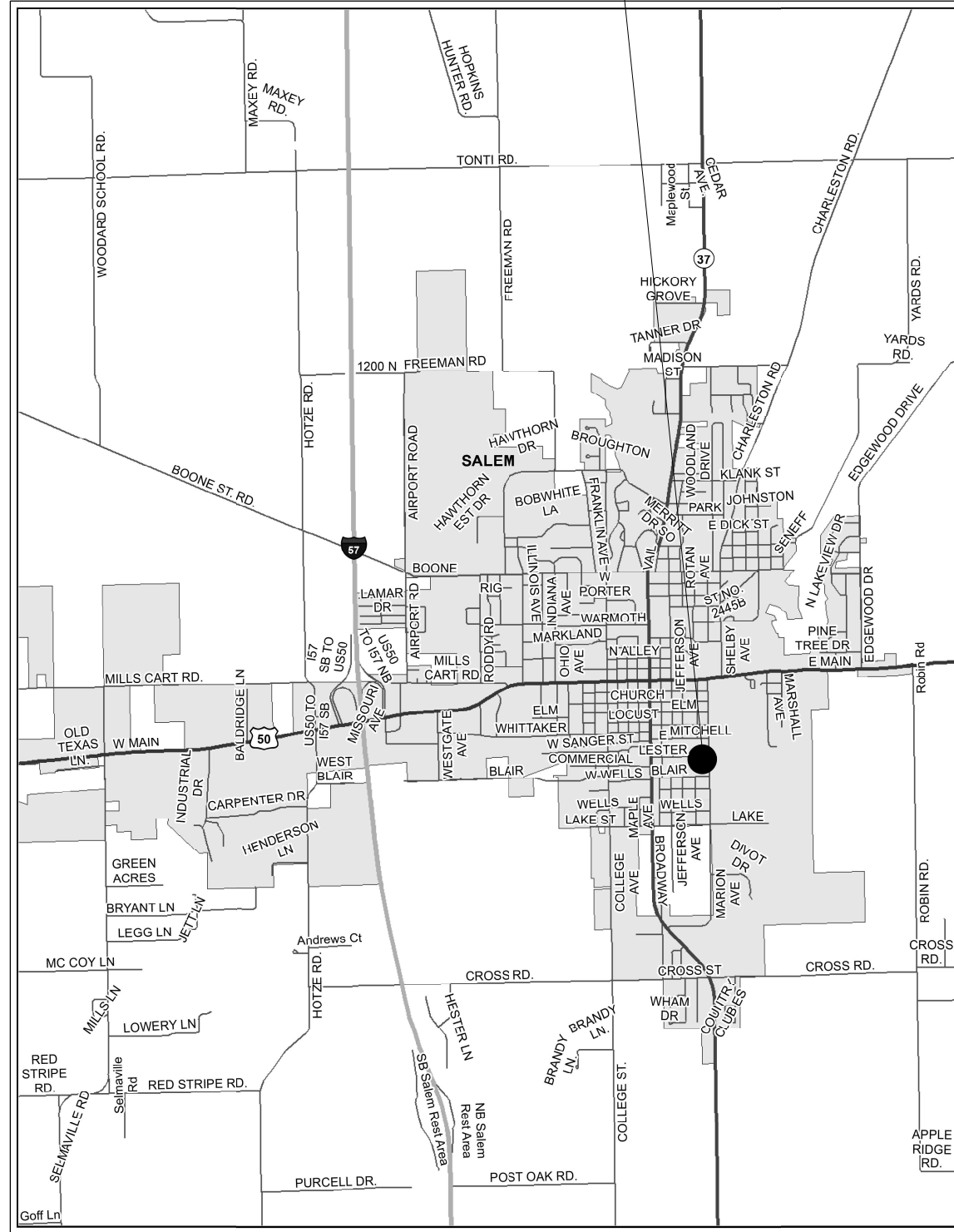
STATE OF ILLINOIS
DEPARTMENT OF TRANSPORTATION

LOCATION 5 STEELEVILLE MAINTENANCE YARD			
SCALE:	SHEET	OF SHEETS	STA. TO STA.

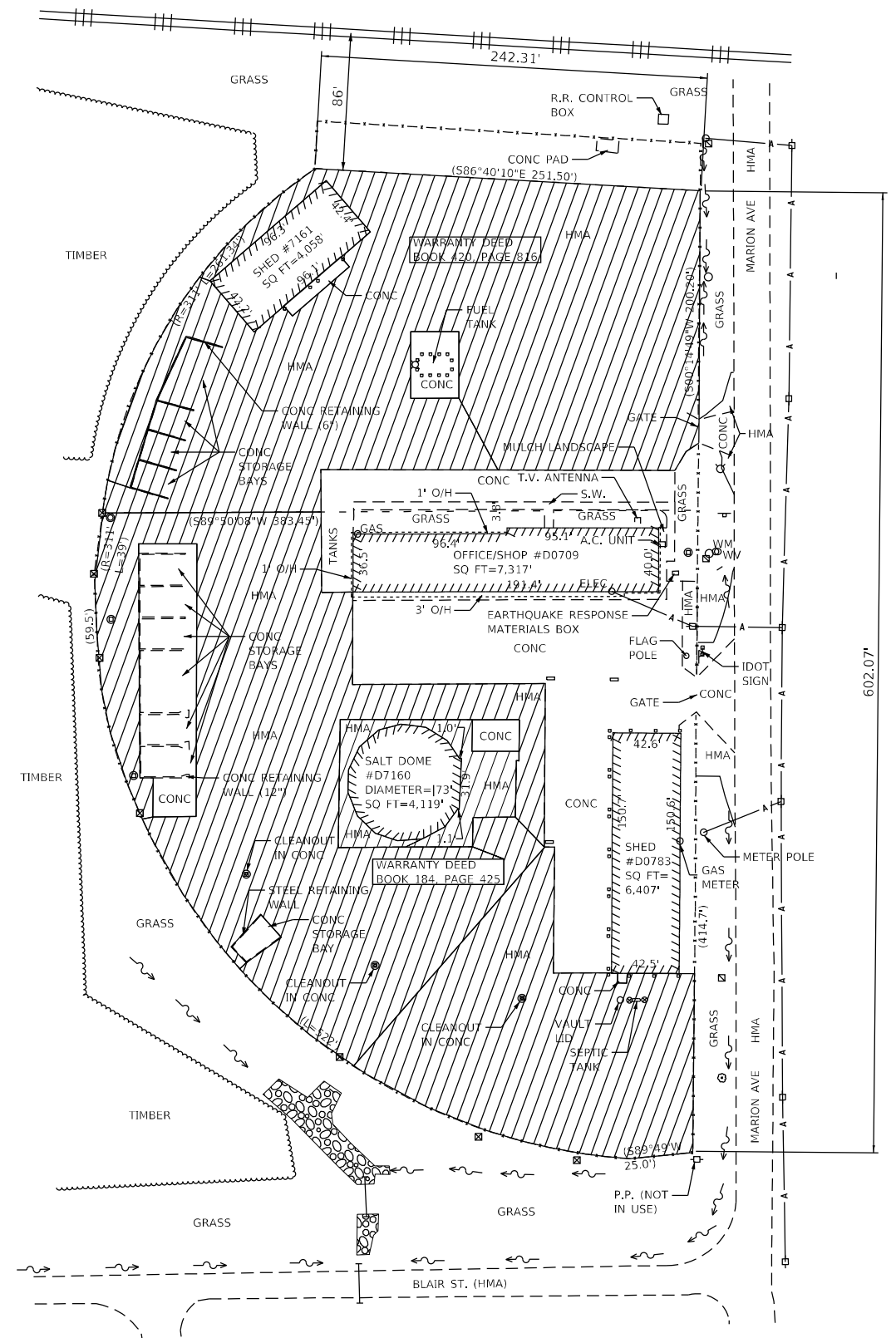
F.A.P. RTE.	SECTION	COUNTY	TOTAL SHEETS	SHEET NO.
VAR.	DIST 8 SEAL COAT 2023-1	VARIOUS	18	9
CONTRACT NO. 76R60				
ILLINOIS		FED. AID PROJECT		



SALEM MAINTENANCE YARD
707 SOUTH MARION STREET
SALEM, IL 62881



LOCATION MAP



LOCATION 6
SALEM MAINTENANCE YARD
PLAN DETAIL
NOT TO SCALE

BITUMINOUS SURFACE TREATMENT, A2 = 10,000 SQ YD

BITUMINOUS SURFACE TREATMENT, A2

MODEL: Default
FILE NAME: p:\project\76660\CADD\Drawings\DWG\76660-01.dwg
PROJECT: DIST 8 SEAL COAT 2023-1
OFFICE: DISTRICT OFFICE
DATE: 2/8/2023

USER NAME = Karen.Challandes	DESIGNED -	REVISED -
	DRAWN -	REVISED -
PLOT SCALE = 100,0000' / in.	CHECKED -	REVISED -
PLOT DATE = 2/8/2023	DATE -	REVISED -

**STATE OF ILLINOIS
DEPARTMENT OF TRANSPORTATION**

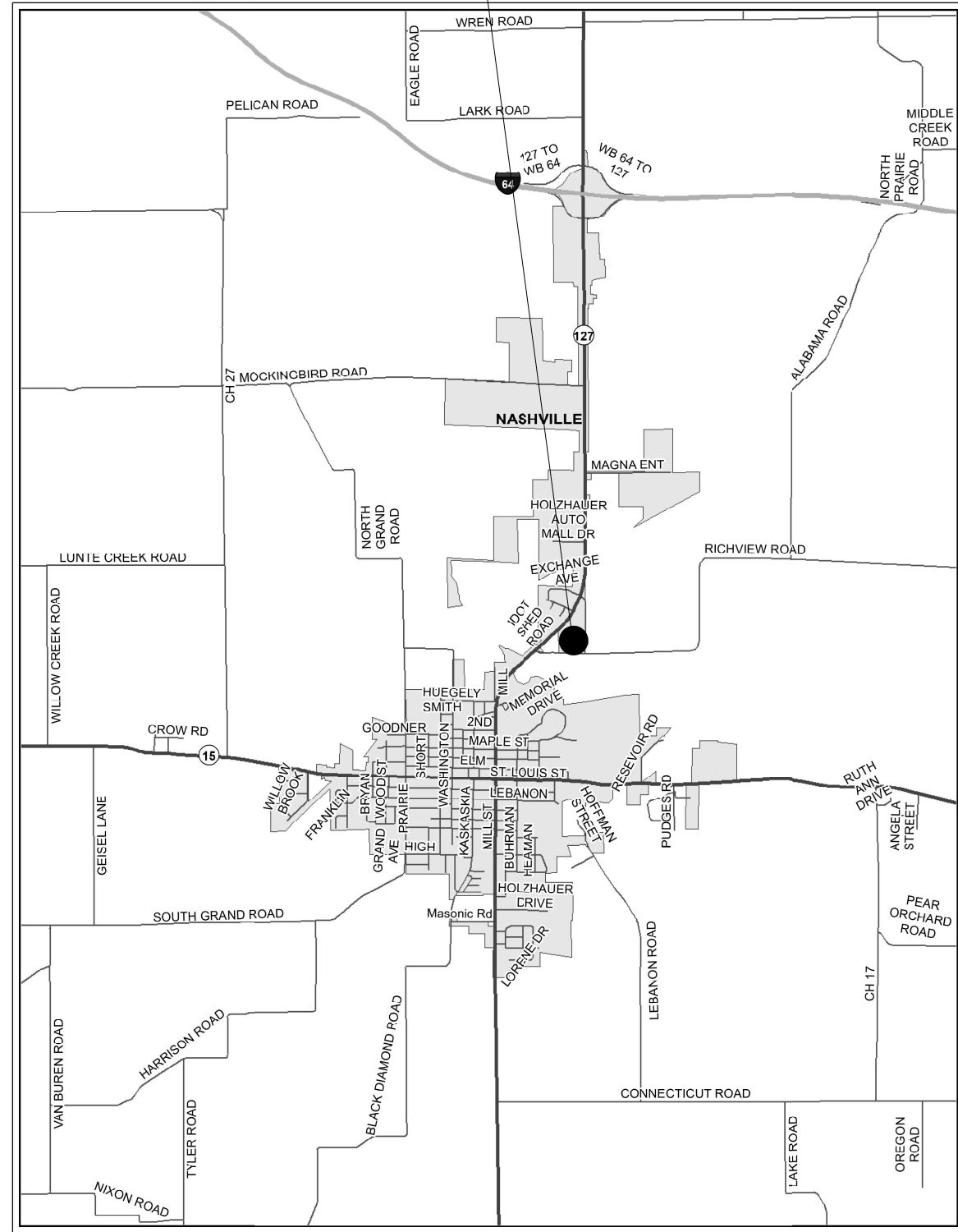
**LOCATION 6
SALEM MAINTENANCE YARD**

SCALE: SHEET OF SHEETS STA. TO STA.

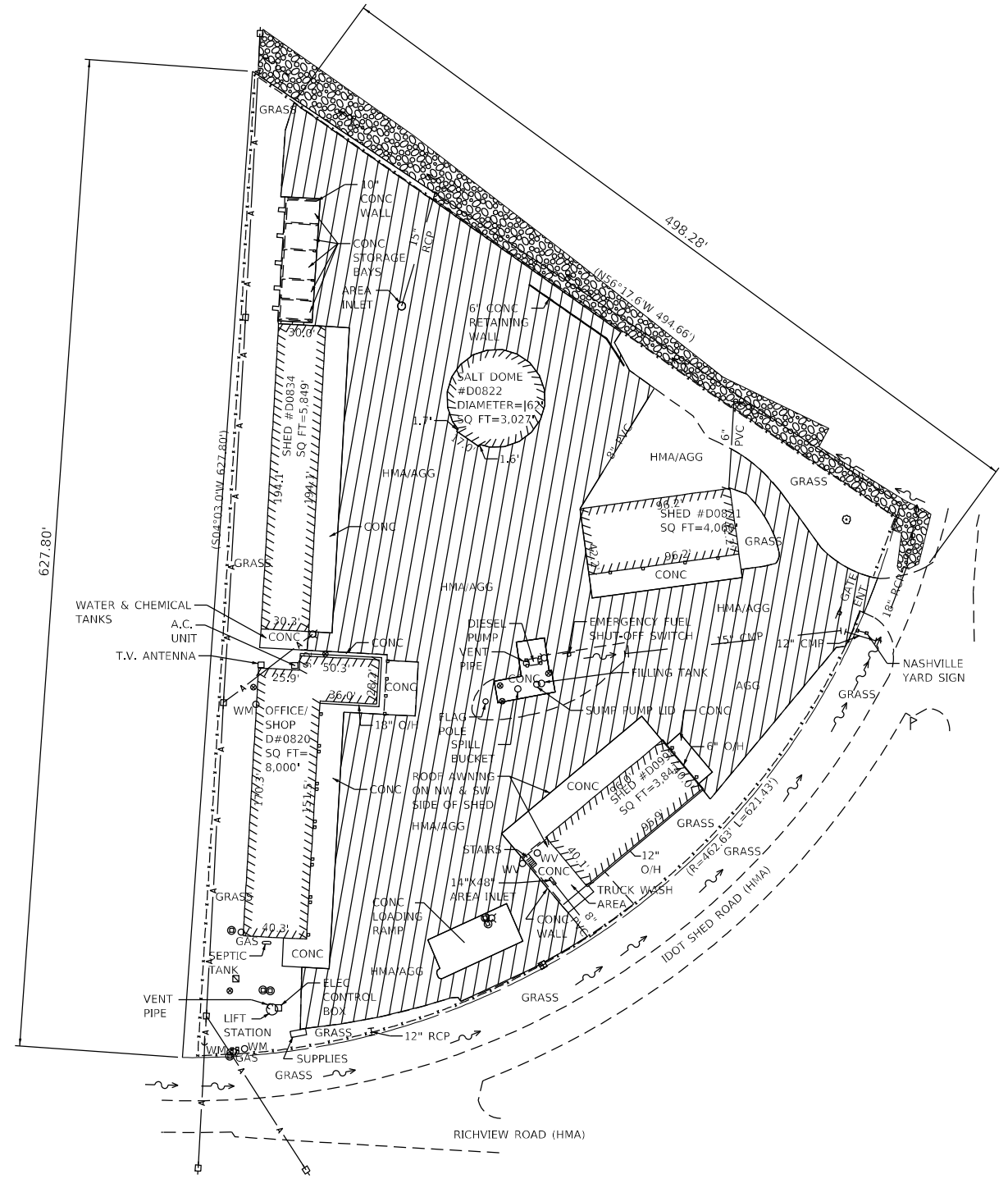
F.A.P. RTE.	SECTION	COUNTY	TOTAL SHEETS	SHEET NO.
VAR.	DIST 8 SEAL COAT 2023-1	VARIOUS	18	10
ILLINOIS FED. AID PROJECT			CONTRACT NO. 76R60	



NASHVILLE MAINTENANCE YARD
 9571 IDOT SHED ROAD
 NASHVILLE, IL 62263



LOCATION MAP



LOCATION 7
 NASHVILLE MAINTENANCE YARD
 PLAN DETAIL
 NOT TO SCALE

BITUMINOUS SURFACE TREATMENT, A2 = 8300 SQ YD

BITUMINOUS SURFACE TREATMENT, A2

MODEL: P:\draft\...
 FILE: 240123...
 PROJECT: IDOT...

USER NAME = Karen.Challandes	DESIGNED -	REVISED -
DRAWN -	REVISER -	
PLOT SCALE = 100,0000' / in.	CHECKED -	REVISER -
PLOT DATE = 2/8/2023	DATE -	REVISER -

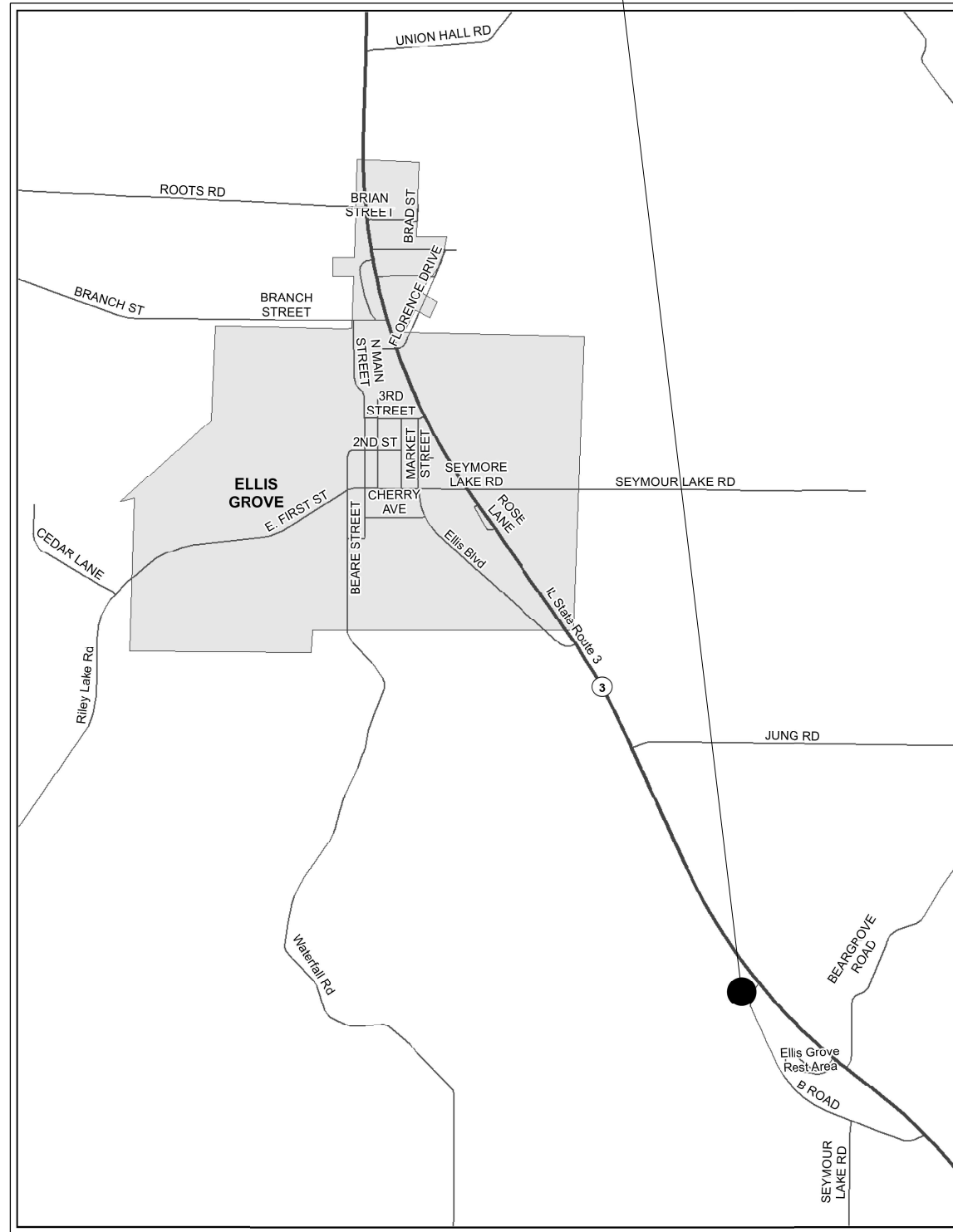
**STATE OF ILLINOIS
 DEPARTMENT OF TRANSPORTATION**

LOCATION 7 NASHVILLE MAINTENANCE YARD				
SCALE:	SHEET	OF SHEETS	STA.	TO STA.

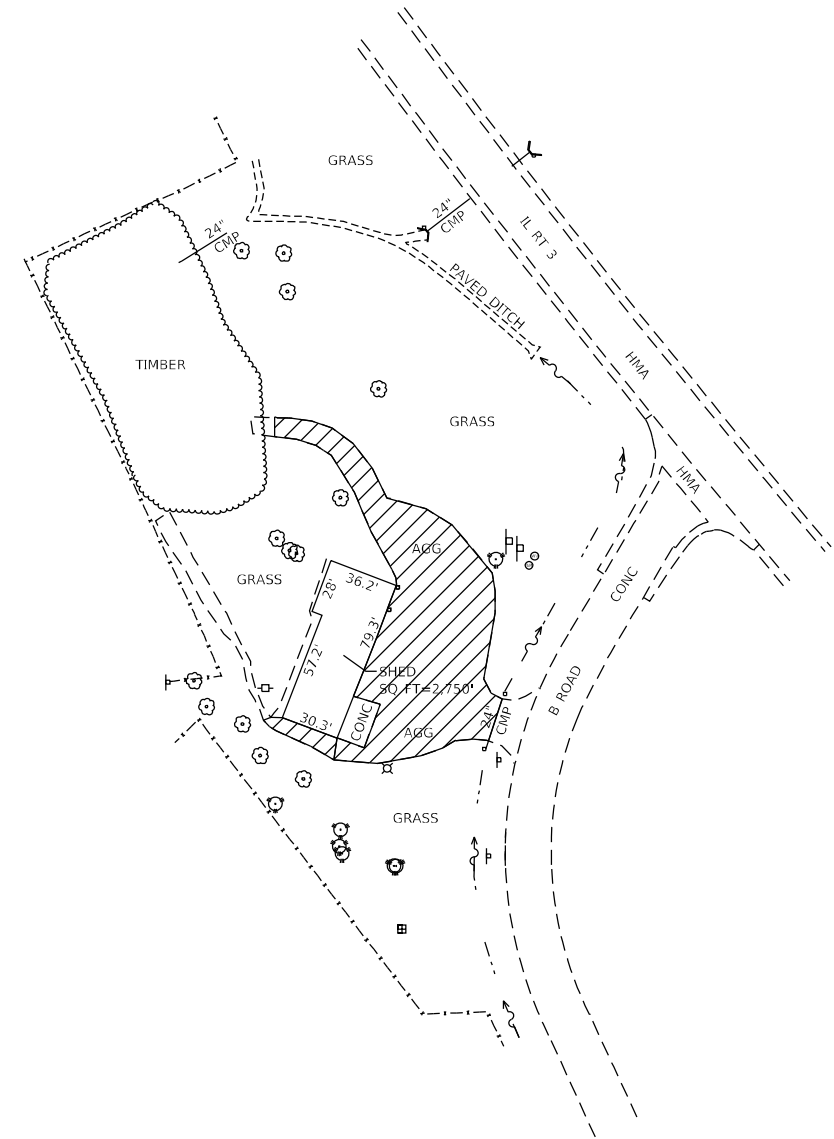
F.A.P. RTE.	SECTION	COUNTY	TOTAL SHEETS	SHEET NO.
VAR.	DIST 8 SEAL COAT 2023-1	VARIOUS	18	11
			CONTRACT NO. 76R60	
		ILLINOIS	FED. AID PROJECT	



ELLIS GROVE MAINTENANCE YARD
NW QUADRANT OF B RD, AND IL 3 INTERSECTION

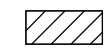


LOCATION MAP



LOCATION 8
ELLIS GROVE MAINTENANCE YARD
PLAN DETAIL
NOT TO SCALE

BITUMINOUS SURFACE TREATMENT, A2 = 950 SQ YD

 BITUMINOUS SURFACE TREATMENT, A2

MODEL: Default
 FILE NAME: p:\uldest-cw-beadley.com\PIV\DOT\Documents\DOT Office\Dir\dr. B\Project\0876660\CADD\Sheet\0876660-ct-11a.dgn

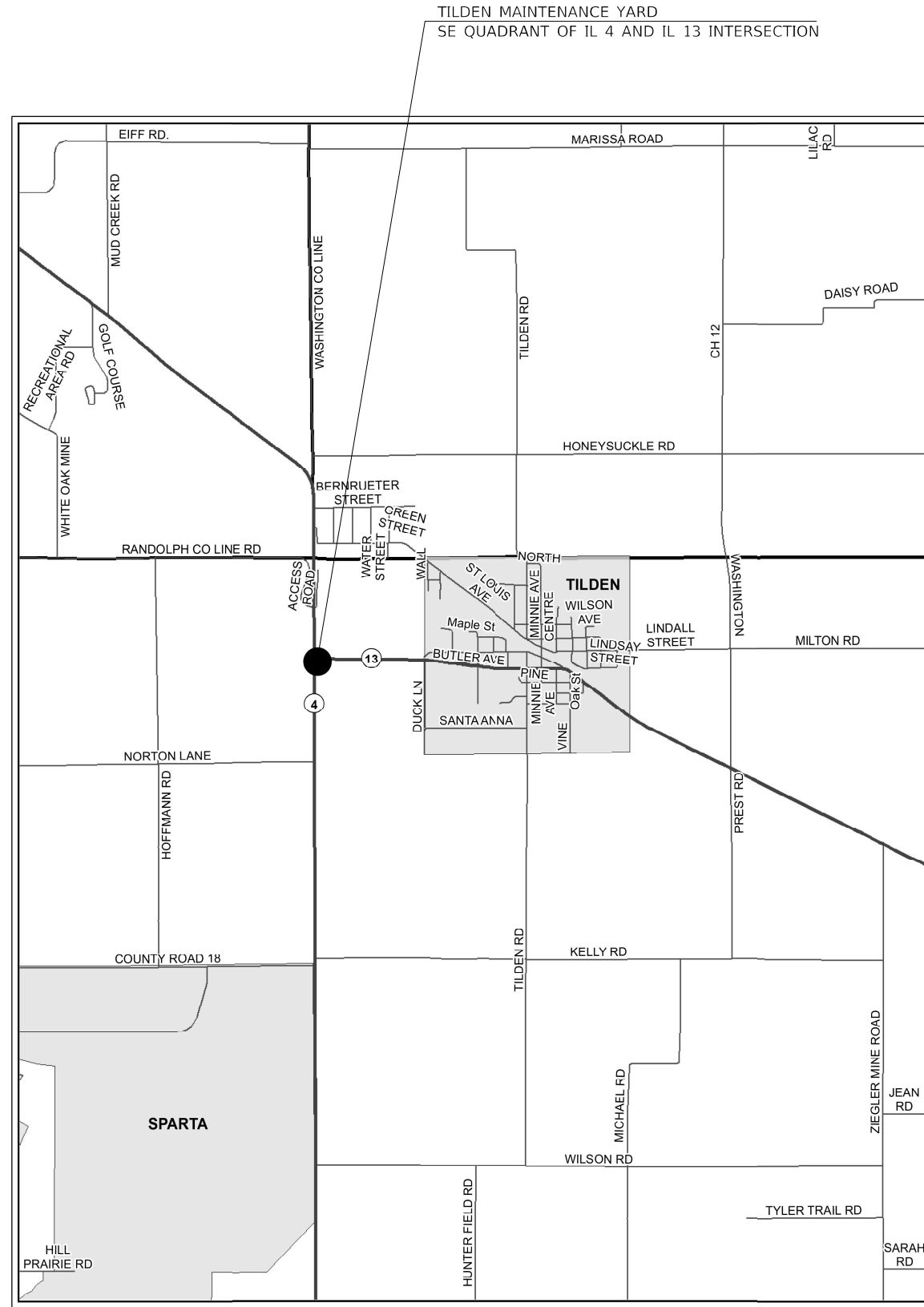
USER NAME = Karen.Challandes	DESIGNED -	REVISED -
	DRAWN -	REVISED -
PLOT SCALE = 100,0000' / in.	CHECKED -	REVISED -
PLOT DATE = 2/8/2023	DATE -	REVISED -

**STATE OF ILLINOIS
DEPARTMENT OF TRANSPORTATION**

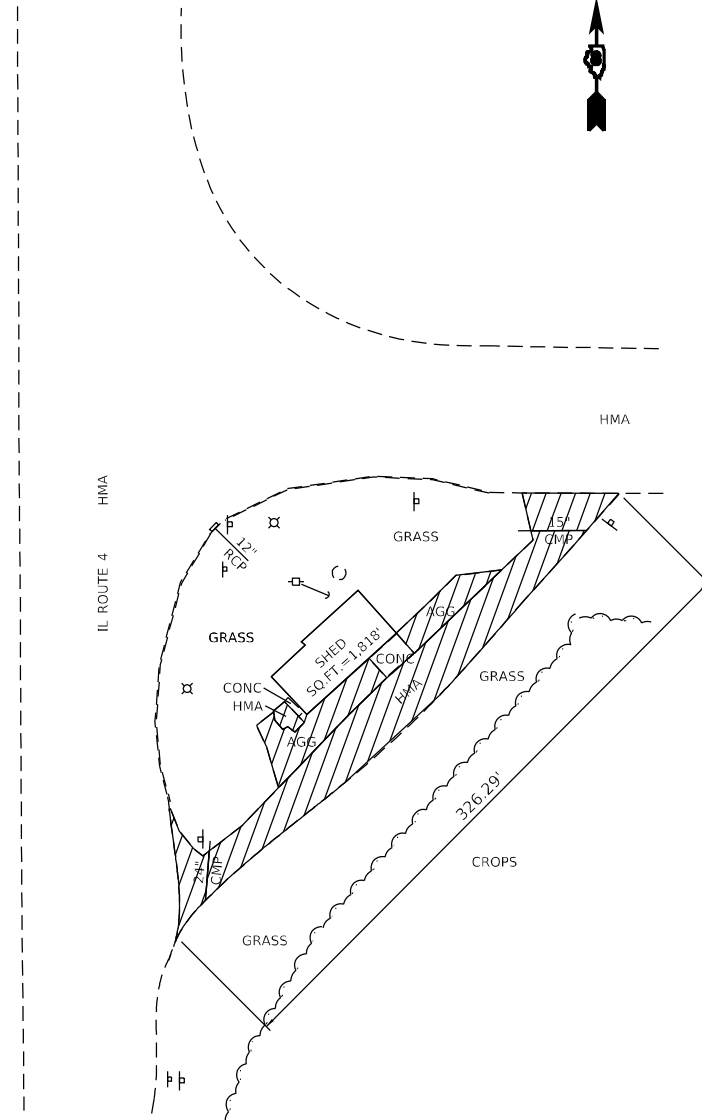
**LOCATION 8
ELLIS GROVE MAINTENANCE YARD**

SCALE: SHEET OF SHEETS STA. TO STA.

F.A.P. RTE.	SECTION	COUNTY	TOTAL SHEETS	SHEET NO.
VAR.	DIST 8 SEAL COAT 2023-1	VARIOUS	18	12
			CONTRACT NO. 76R60	
		ILLINOIS FED. AID PROJECT		



LOCATION MAP



**LOCATION 9
TILDEN MAINTENANCE YARD
PLAN DETAIL
NOT TO SCALE**

BITUMINOUS SURFACE TREATMENT, A2 = 800 SQ YD

 BITUMINOUS SURFACE TREATMENT, A2

MODEL: Default
 FILE: 766R60.ctb
 PROJECT: D:\Projects\766R60\766R60\766R60\766R60\766R60.ctb
 USER: Karen.Challandes

USER NAME = Karen.Challandes	DESIGNED -	REVISED -
PLOT SCALE = 100,0000' / in.	DRAWN -	REVISED -
PLOT DATE = 2/8/2023	CHECKED -	REVISED -
	DATE -	REVISED -

**STATE OF ILLINOIS
DEPARTMENT OF TRANSPORTATION**

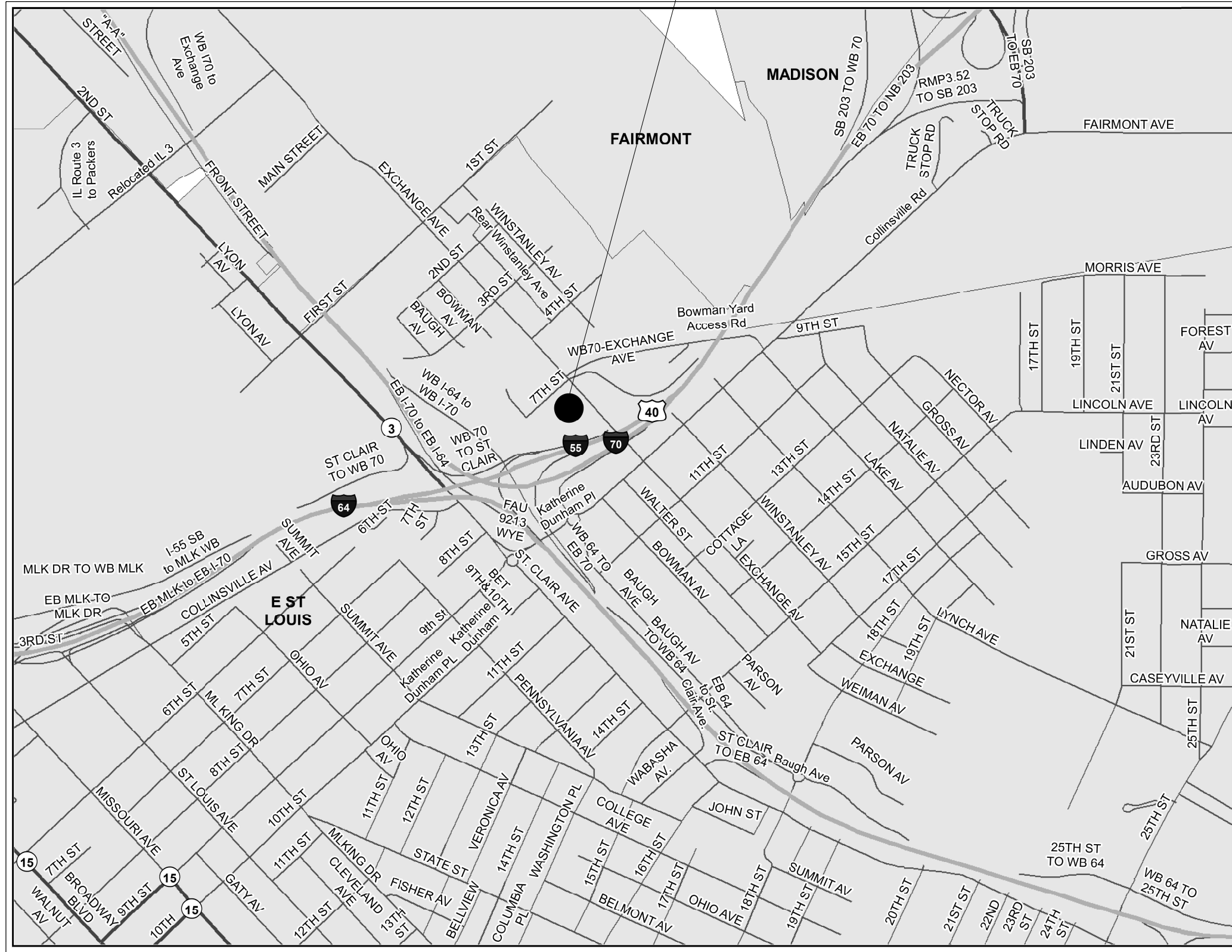
**LOCATION 9
TILDEN MAINTENANCE YARD**

SCALE: SHEET OF SHEETS STA. TO STA.

F.A.P. RTE.	SECTION	COUNTY	TOTAL SHEETS	SHEET NO.
VAR.	DIST 8 SEAL COAT 2023-1	VARIOUS	18	13
			CONTRACT NO. 76R60	
ILLINOIS FED. AID PROJECT				



EAST ST. LOUIS YARD AND SIDE YARD ACROSS THE STREET
 728 EXCHANGE AVE.
 EAST ST. LOUIS, IL 62201



LOCATION MAP

MODEL: Default
 FILE: 76660.ctb
 PROJECT: D:\Projects\76660\CADD\76660.ctb
 USER: Karen.Challandes

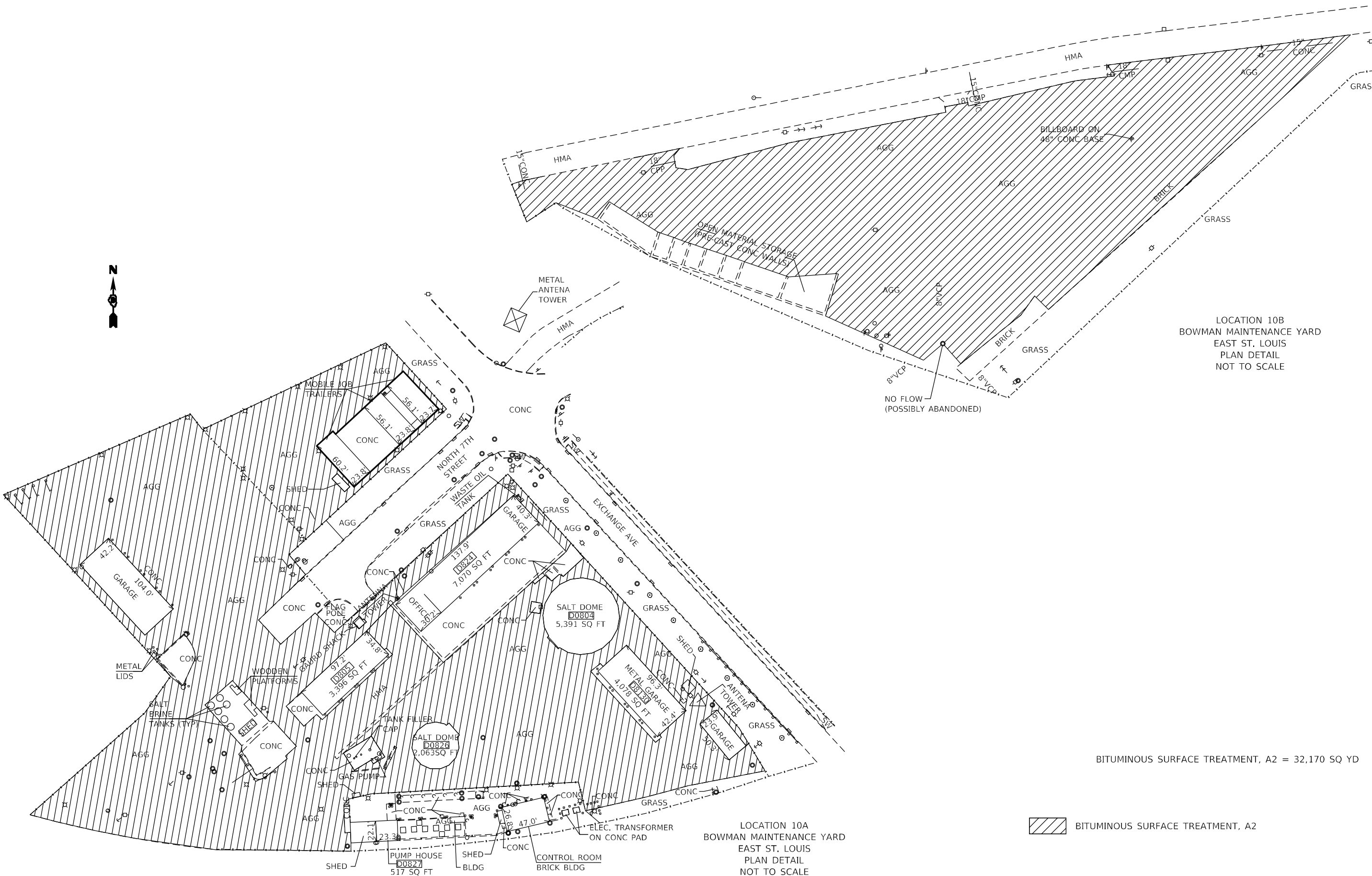
USER NAME = Karen.Challandes	DESIGNED -	REVISED -
DRAWN -	REVISED -	REVISED -
PLOT SCALE = 100,0000' / in.	CHECKED -	REVISED -
PLOT DATE = 2/8/2023	DATE -	REVISED -

**STATE OF ILLINOIS
 DEPARTMENT OF TRANSPORTATION**

**LOCATION 10
 EAST ST. LOUIS MAINTENANCE YARD**

SCALE: SHEET OF SHEETS STA. TO STA.

F.A.P. RTE.	SECTION	COUNTY	TOTAL SHEETS	SHEET NO.
VAR.	DIST 8 SEAL COAT 2023-1	VARIOUS	18	14
			CONTRACT NO. 76R60	
ILLINOIS FED. AID PROJECT				



LOCATION 10B
BOWMAN MAINTENANCE YARD
EAST ST. LOUIS
PLAN DETAIL
NOT TO SCALE

BITUMINOUS SURFACE TREATMENT, A2 = 32,170 SQ YD

 BITUMINOUS SURFACE TREATMENT, A2

LOCATION 10A
BOWMAN MAINTENANCE YARD
EAST ST. LOUIS
PLAN DETAIL
NOT TO SCALE

MODEL: Default
FILE NAME: p:\p\10a\10a\10a.dwg
PROJECT: 10A
DRAWN: KCH
CHECKED: KCH
DATE: 2/8/2023

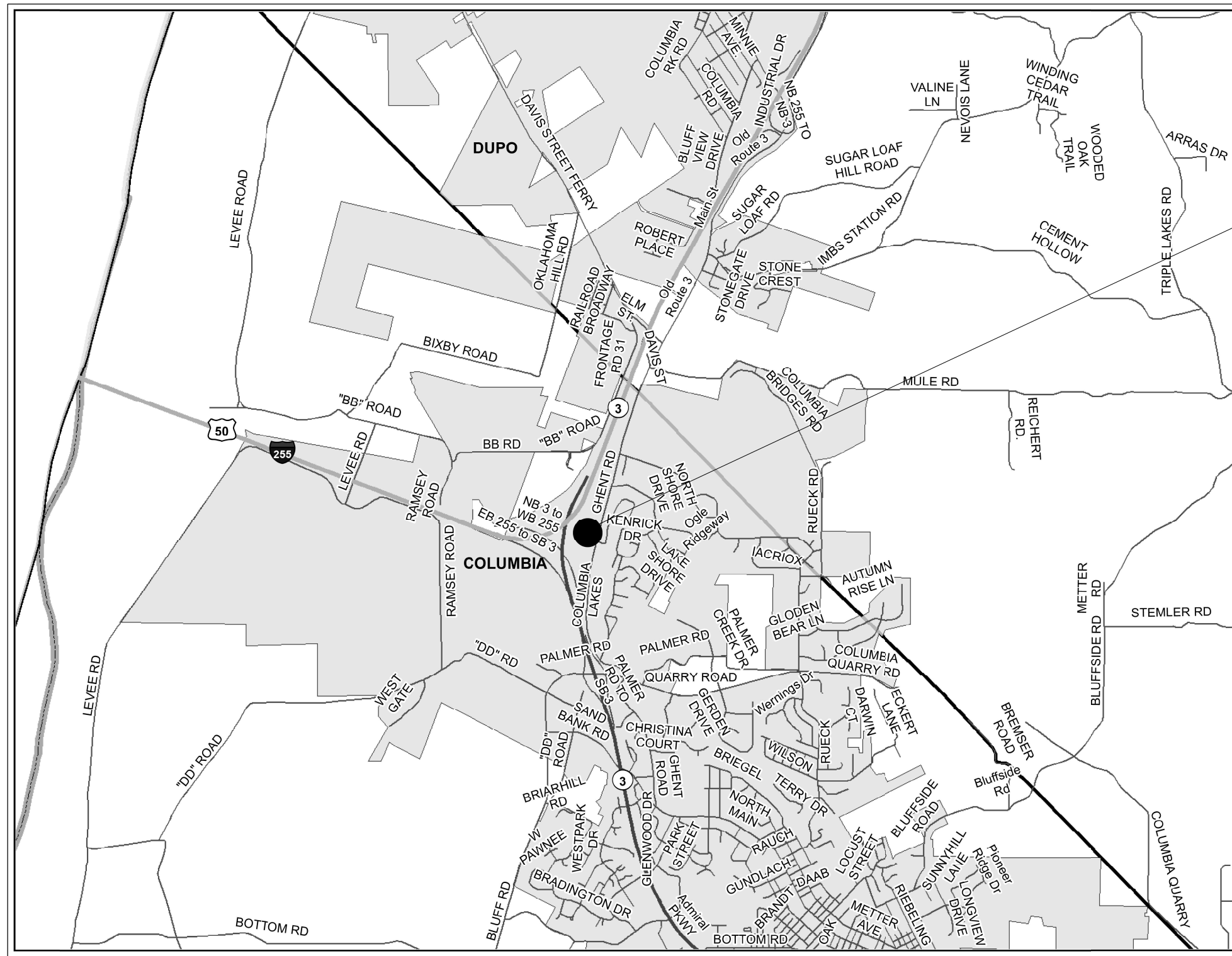
USER NAME = Karen.Challandes	DESIGNED -	REVISED -
PLOT SCALE = 100,0000 ' / in.	DRAWN -	REVISED -
PLOT DATE = 2/8/2023	CHECKED -	REVISED -
	DATE -	REVISED -

**STATE OF ILLINOIS
DEPARTMENT OF TRANSPORTATION**

**LOCATION 10
EAST ST. LOUIS MAINTENANCE YARD**

SCALE: SHEET OF SHEETS STA. TO STA.

F.A.P. RTE.	SECTION	COUNTY	TOTAL SHEETS	SHEET NO.
VAR.	DIST 8 SEAL COAT 2023-1	VARIOUS	18	15
				CONTRACT NO. 76R60
ILLINOIS FED. AID PROJECT				



COLUMBIA MAINTENANCE YARD
 405 OLD ROUTE 3
 COLUMBIA, IL 62236

LOCATION MAP

MODEL: Default
 FILE: \\na165-pw\build-cw-bead\paw.com\PIV\DOT\Documents\DOT_Offices\Dir\dr. B\Project\0876860\CADD\Drawings\CAD\Sheet\0876860-ct-11a.dgn

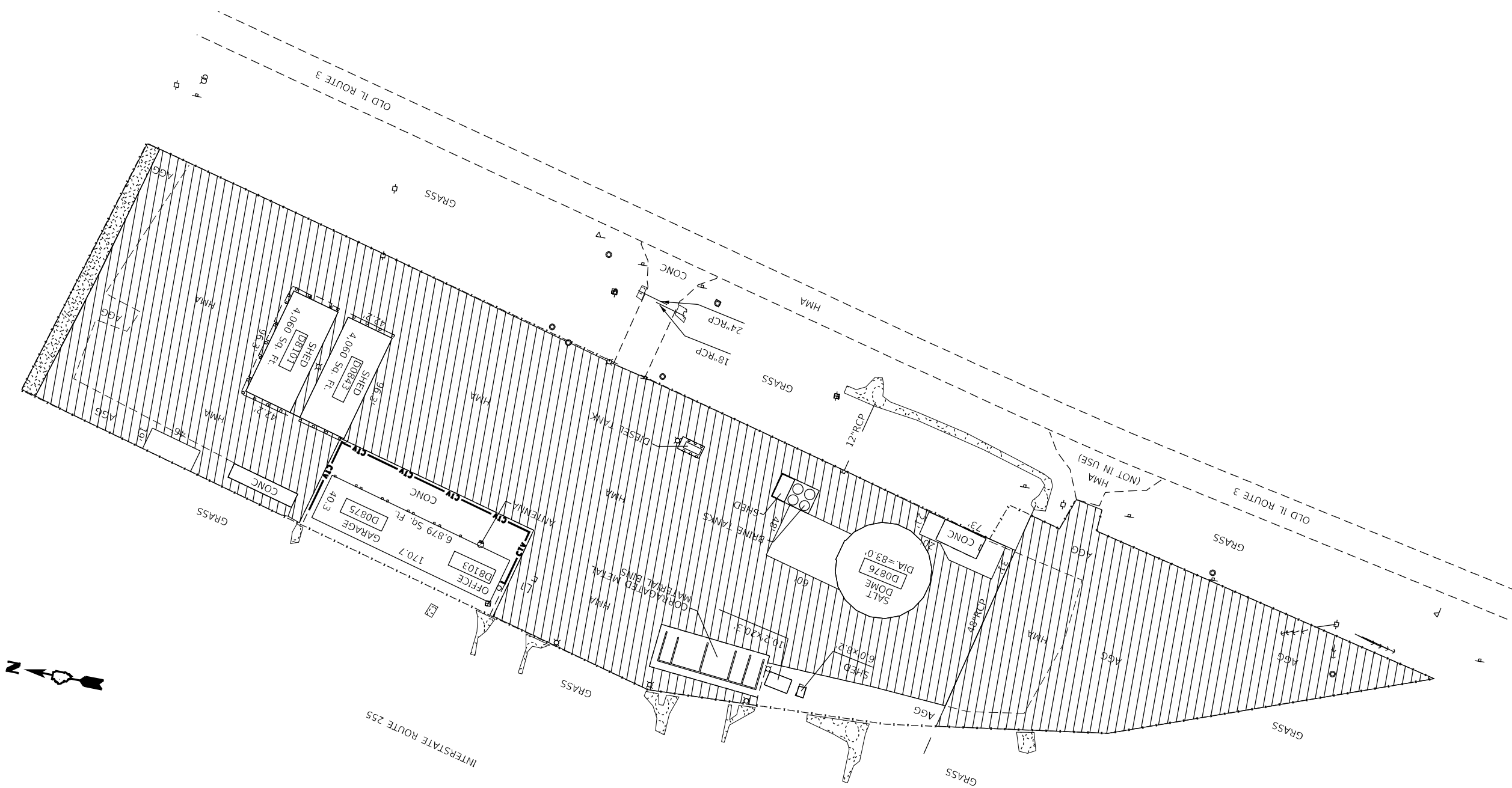
USER NAME = Karen.Challandes	DESIGNED -	REVISED -
	DRAWN -	REVISED -
PLOT SCALE = 100,0000' / in.	CHECKED -	REVISED -
PLOT DATE = 2/8/2023	DATE -	REVISED -

**STATE OF ILLINOIS
 DEPARTMENT OF TRANSPORTATION**

**LOCATION 11
 COLUMBIA MAINTENANCE YARD**

SCALE: SHEET OF SHEETS STA. TO STA.

F.A.P. RTE.	SECTION	COUNTY	TOTAL SHEETS	SHEET NO.
VAR.	DIST 8 SEAL COAT 2023-1	VARIOUS	18	16
			CONTRACT NO. 76R60	
ILLINOIS FED. AID PROJECT				



LOCATION 11
COLUMBIA MAINTENANCE YARD
PLAN DETAIL
NOT TO SCALE

BITUMINOUS SURFACE TREATMENT, A2 = 16,944 SQ YD

 BITUMINOUS SURFACE TREATMENT, A2

MODEL: Default
 FILE NAME: p:\ultra-cw-bead\p\com\p\INDOT\Documents\DOT Office\Dir\dir_8\Project\0876660\CADD\Sheet\0876660-sha-plan.dgn

USER NAME = Karen.Challandes	DESIGNED -	REVISED -
	DRAWN -	REVISED -
PLOT SCALE = 100,0000 ' / in.	CHECKED -	REVISED -
PLOT DATE = 2/8/2023	DATE -	REVISED -

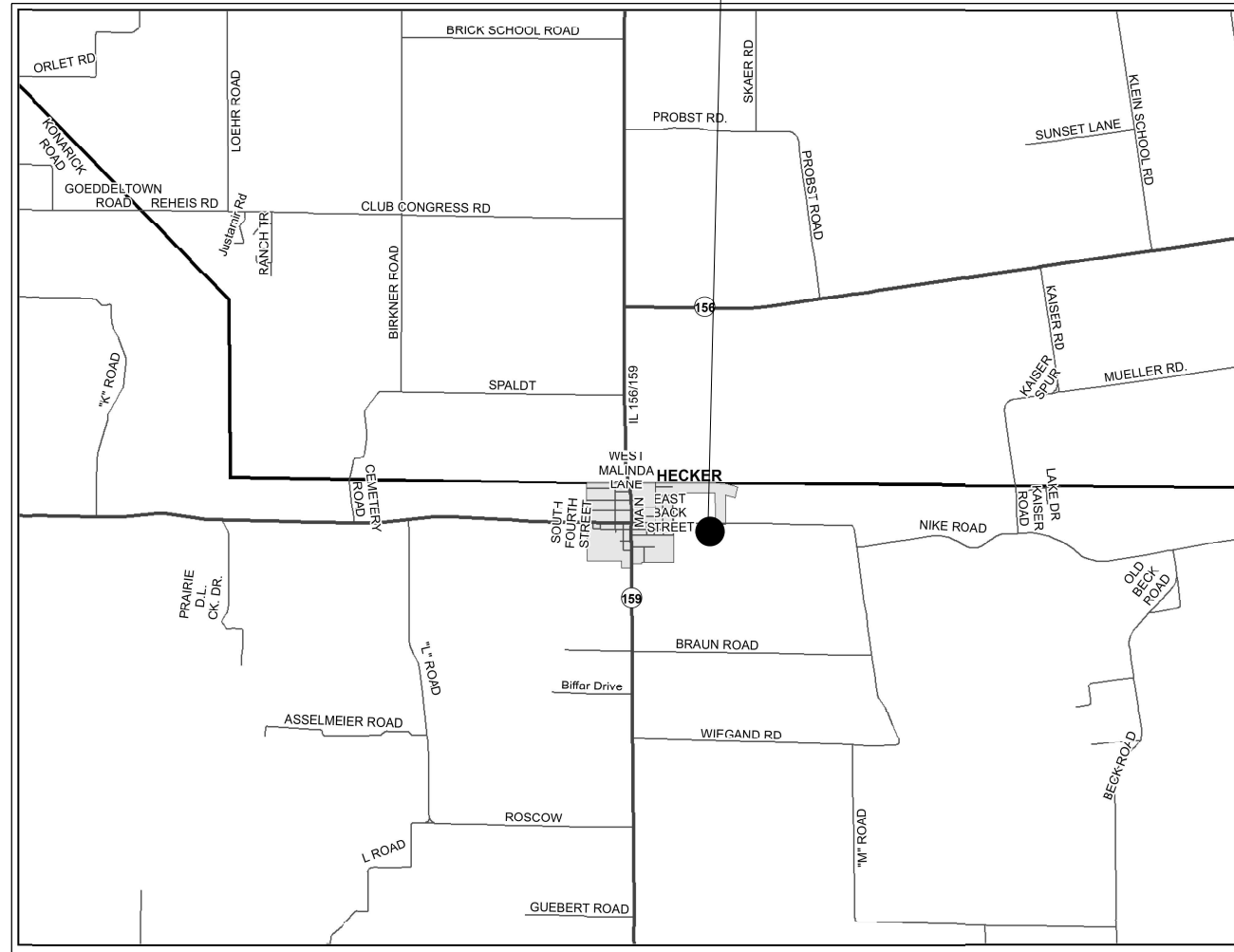
**STATE OF ILLINOIS
DEPARTMENT OF TRANSPORTATION**

LOCATION 11 COLUMBIA MAINTENANCE YARD			
SCALE:	SHEET	OF SHEETS	STA. TO STA.

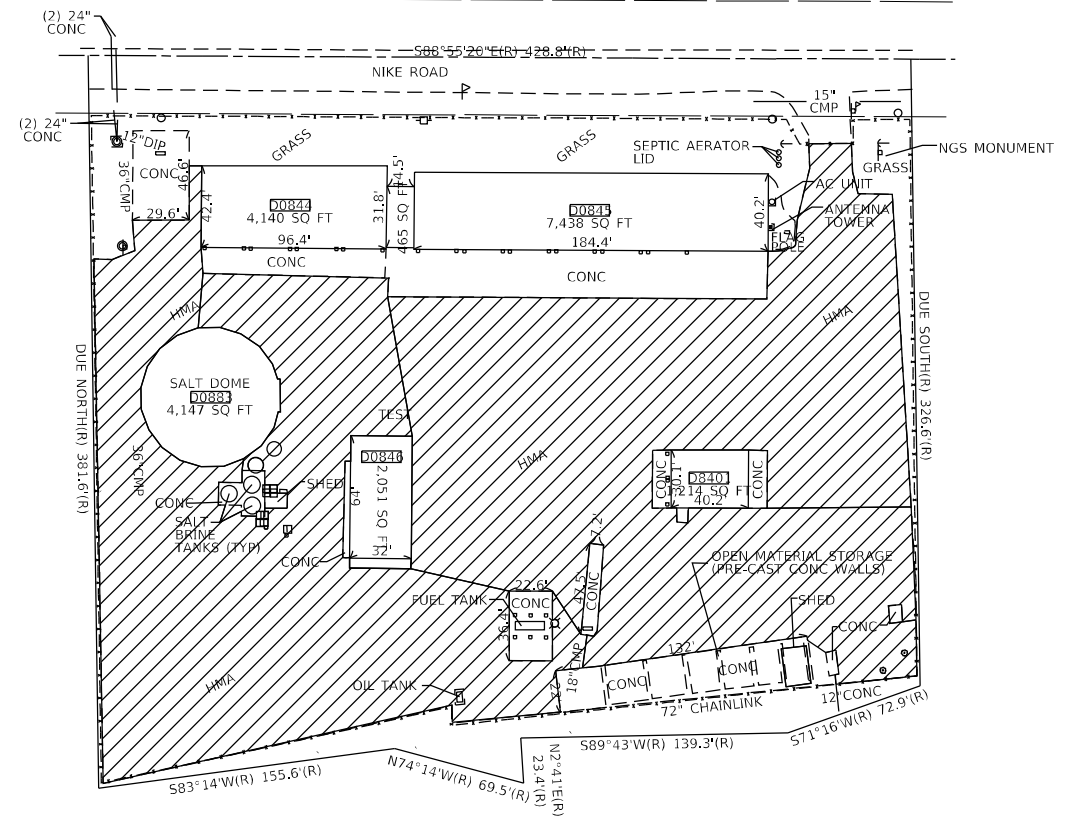
F.A.P. RTE.	SECTION	COUNTY	TOTAL SHEETS	SHEET NO.
VAR.	DIST 8 SEAL COAT 2023-1	VARIOUS	18	17
			CONTRACT NO. 76R60	
		ILLINOIS	FED. AID PROJECT	



HECKER MAINTENANCE YARD
8272 NIKE ROAD
HECKER, IL 62248



LOCATION MAP



LOCATION 12
HECKER MAINTENANCE YARD
PLAN DETAIL
NOT TO SCALE

BITUMINOUS SURFACE TREATMENT, A2 = 7025 SQ YD

 BITUMINOUS SURFACE TREATMENT, A2

MODEL: Default
FILE: h:\maps\p11\dst-cw-beckey.com\P11\DOT\Documents\DOT Office\Dir\dr. E:\Project\0876860\CADD\313\CAD\sheet\0876860-cb-13a.dgn

USER NAME = Karen.Challandes	DESIGNED -	REVISED -
	DRAWN -	REVISED -
PLOT SCALE = 100,0000' / in.	CHECKED -	REVISED -
PLOT DATE = 2/8/2023	DATE -	REVISED -

**STATE OF ILLINOIS
DEPARTMENT OF TRANSPORTATION**

**LOCATION 12
HECKER MAINTENANCE YARD**

SCALE: SHEET OF SHEETS STA. TO STA.

F.A.P. RTE.	SECTION	COUNTY	TOTAL SHEETS	SHEET NO.
VAR.	DIST 8 SEAL COAT 2023-1	VARIOUS	18	18
			CONTRACT NO. 76R60	
		ILLINOIS	FED. AID PROJECT	