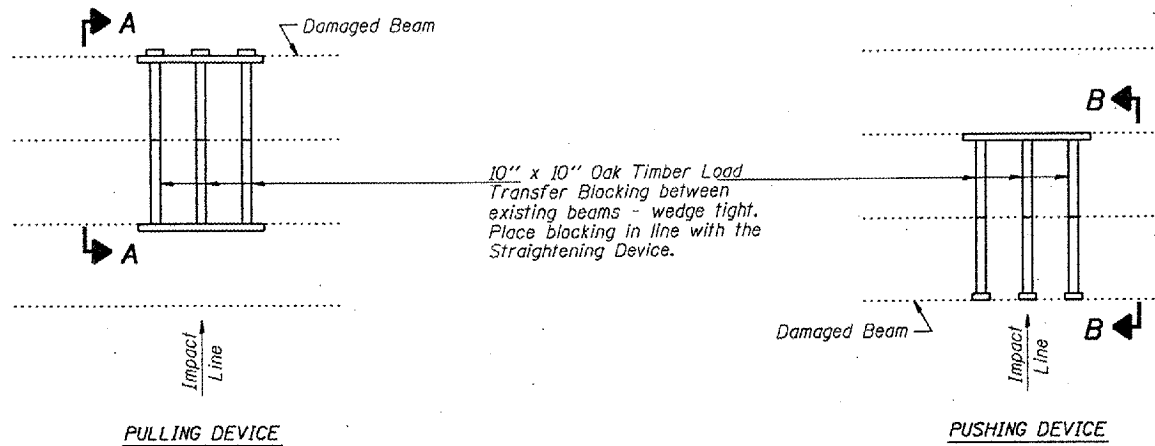


STATE OF ILLINOIS  
DEPARTMENT OF TRANSPORTATION

ROUTE NO.	SECTION	COUNTY	SHEET	PROJECT
		LAKE	11	6
FED. ROAD DIST. NO. 7	ILLINOIS	FED. AID PROJECT		

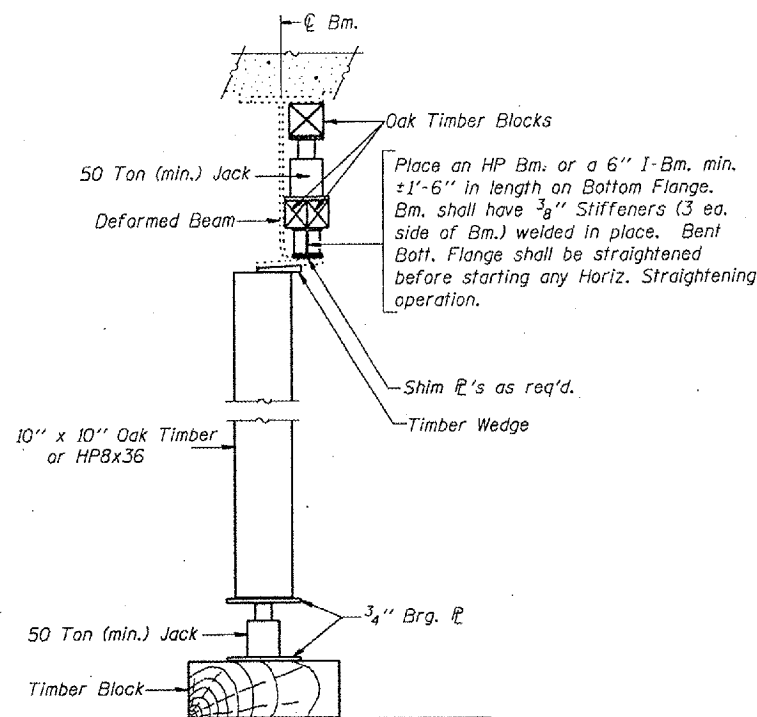
SHEET NO. 2  
6 SHEETS

Contract No. 62874

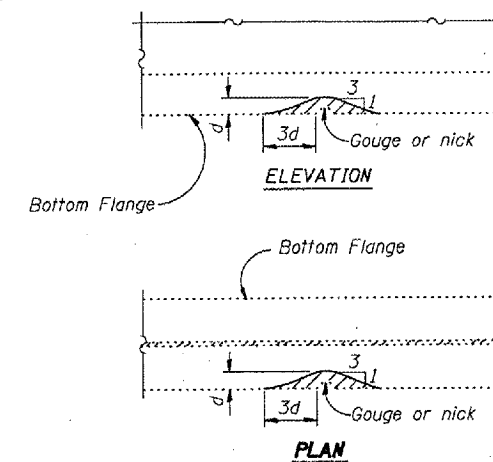


**PARTIAL PLANS**  
**SUGGESTED BEAM STRAIGHTENING METHODS**

Straightening Force shall be maintained on all load transfer blocking during beam straightening.

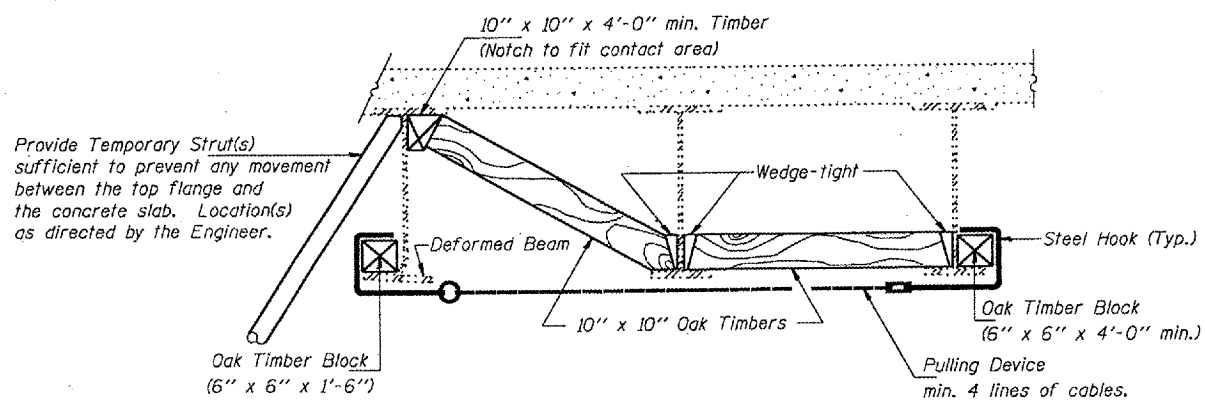


**SUGGESTED VERTICAL STRAIGHTENING DETAIL**

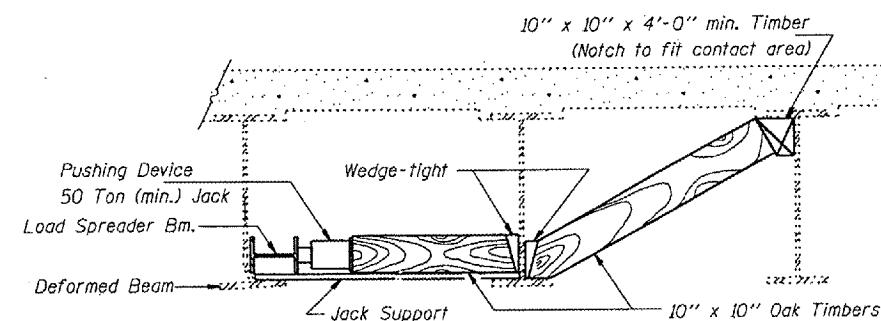


**GRINDING DETAIL**

Grind existing nicks, gouges and shallow cracks in the damaged beams as detailed. Ground surfaces shall be inspected for cracks using magnetic particle testing prior to initiating any beam straightening operations. Any cracks that cannot be removed by grinding approximately 1/4" deep shall be identified and reported to the Bureau of Bridges and Structures for further disposition. Ground surfaces shall be spot cleaned and painted with an aluminum epoxy mastic primer followed by a finish coat to match the color of the existing beam. Cost of grinding, testing and spot painting included with Beam Straightening.



**SECTION A-A**



**SECTION B-B**

DESIGNED	JSB
CHECKED	PSJ
DRAWN	baliva
CHECKED	JSB PSJ

MARCH 15, 2005

EXAMINED *John A. Morris*  
ENGINEER OF STRUCTURAL SERVICES

PASSED *Ralph E. Anderson*  
ENGINEER OF BRIDGES AND STRUCTURES

REP-1 1-27-2000

**BEAM STRAIGHTENING DETAILS**  
**IL RTE 137 OVER US RTE 45**  
**LAKE COUNTY**  
**SN 049-0170**