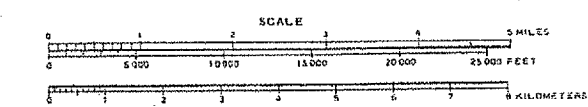
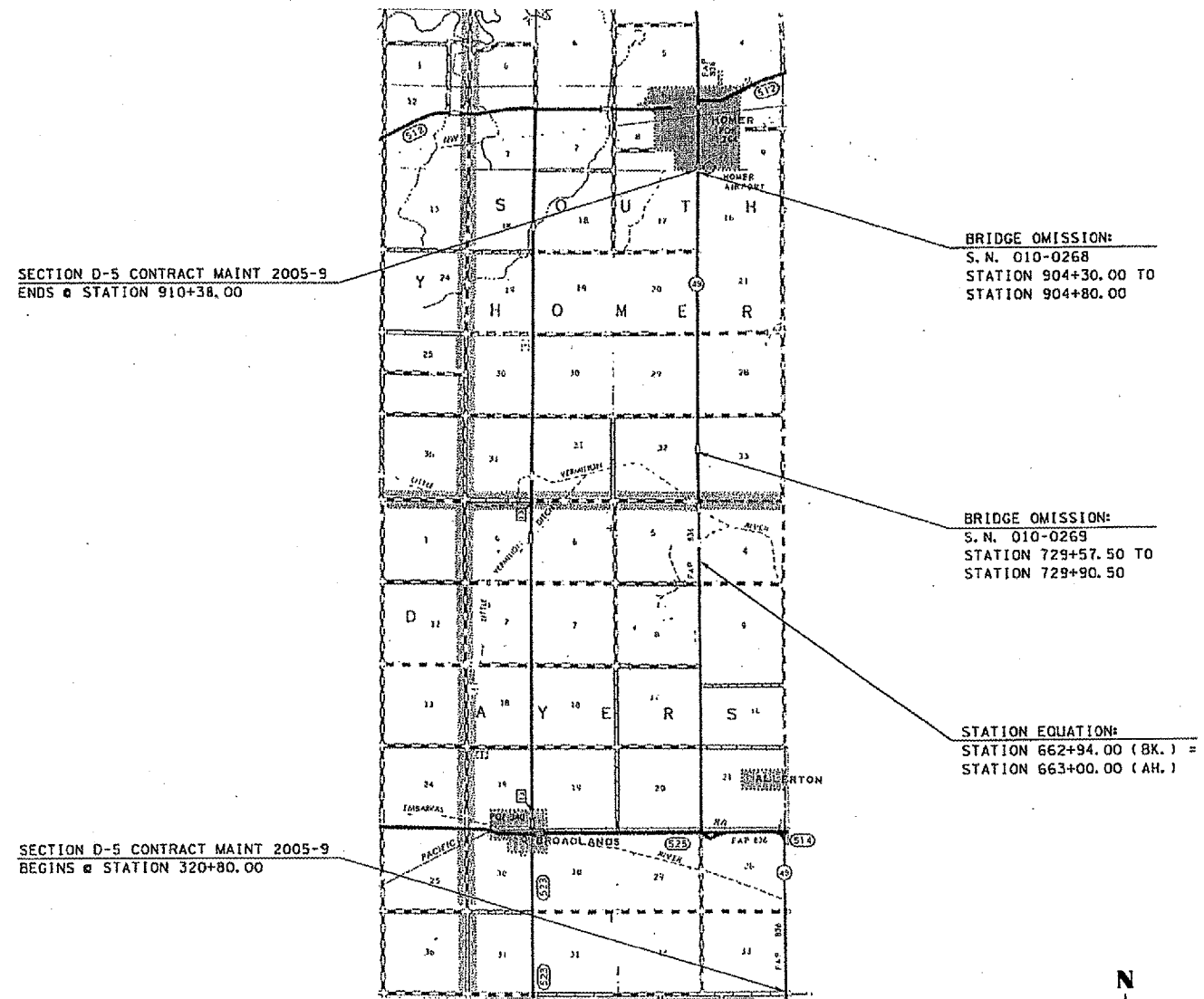


F.A. RTE.	SECTION	COUNTY	TOTAL SHEETS	SHEET NO.
VAR.	*	**	23	3

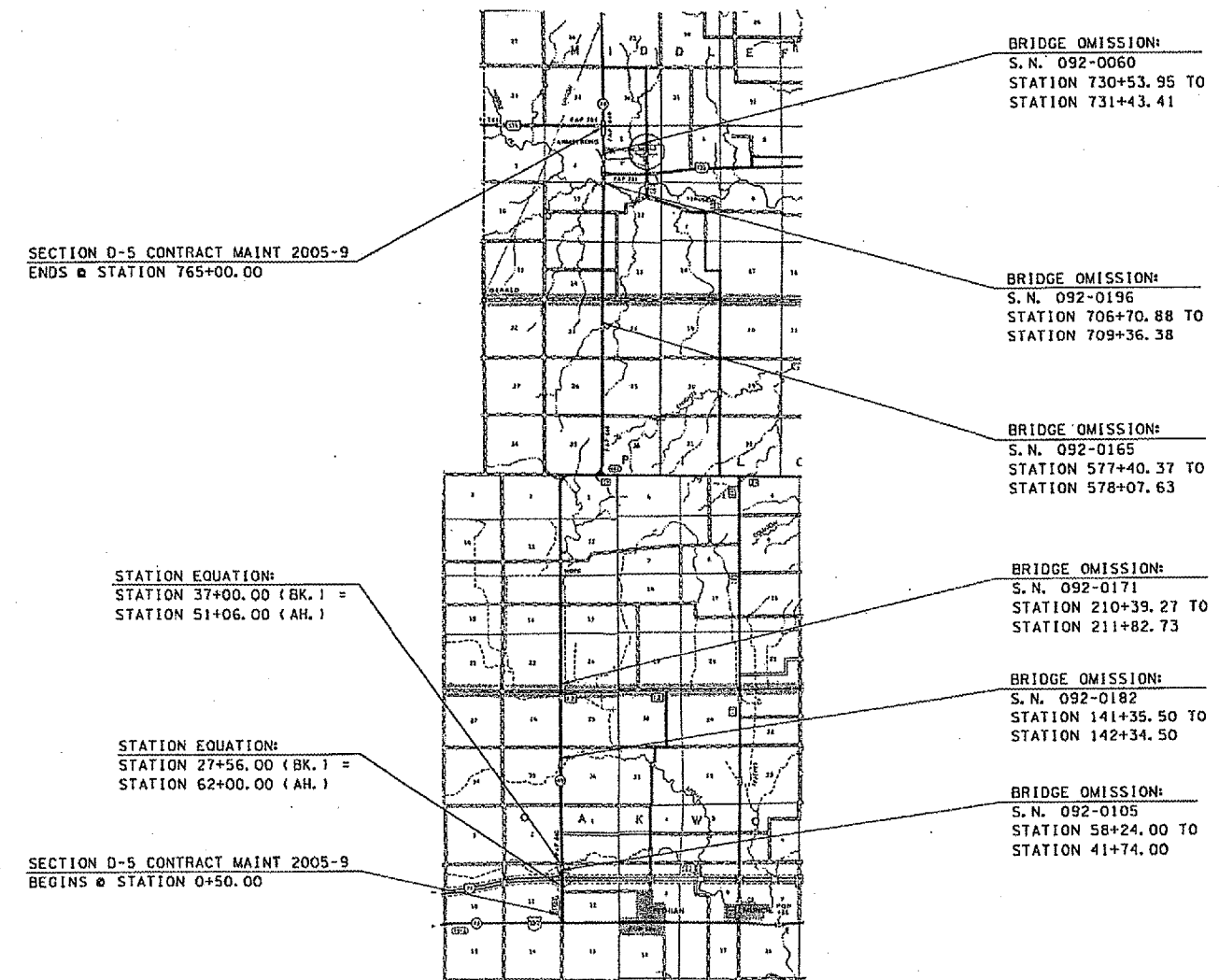
• D-5 CONTRACT MAINT 2005-9  
 \*\* CHAMPAIGN & VERMILION  
 CONTRACT NO. 70448

**LOCATION MAP #1**  
**IL 49, FROM DOUGLAS /EDGAR COUNTY LINE TO**  
**SCL OF HOMER**  
**CHAMPAIGN COUNTY /RURAL 2-LANE**

**LOCATION MAP #2**  
**IL 49, FROM U.S. 150 TO U.S. 136 WEST**  
**VERMILION COUNTY /RURAL 2-LANE**



TOTAL LENGTH OF SECTION = 58,952.00 FT. = 11.165 MILES  
 NET LENGTH OF SECTION = 58,869.00 FT. = 11.149 MILES



TOTAL LENGTH OF SECTION = 76,600.00 FT. = 14.508 MILES  
 NET LENGTH OF SECTION = 74,285.32 FT. = 14.069 MILES