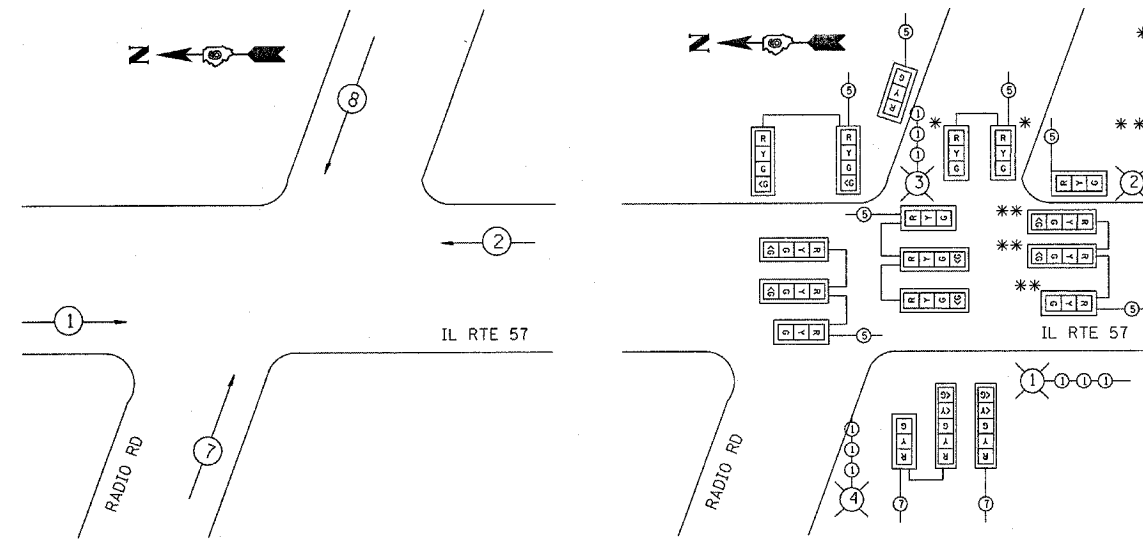


* TEMPORARY SIGNAL HEADS FOR PROPOSED WEST APPROACH SHALL NOT OPERATE DURING STAGES 1, 2 & 3 AND SHALL BE COVERED. SIGNAL HEAD WIRING SHALL BE LANDED TO PHASE 4 OF TEMPORARY TRAFFIC SIGNAL CONTROLLER CABINET.

** TEMPORARY SIGNAL HEADS SHALL NOT OPERATE DURING STAGES 1, 2 & 3 AND SHALL BE COVERED. SIGNAL HEAD WIRING SHALL BE LANDED TO PHASE 1 OF TEMPORARY TRAFFIC SIGNAL CONTROLLER CABINET.



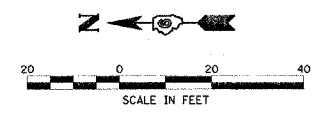
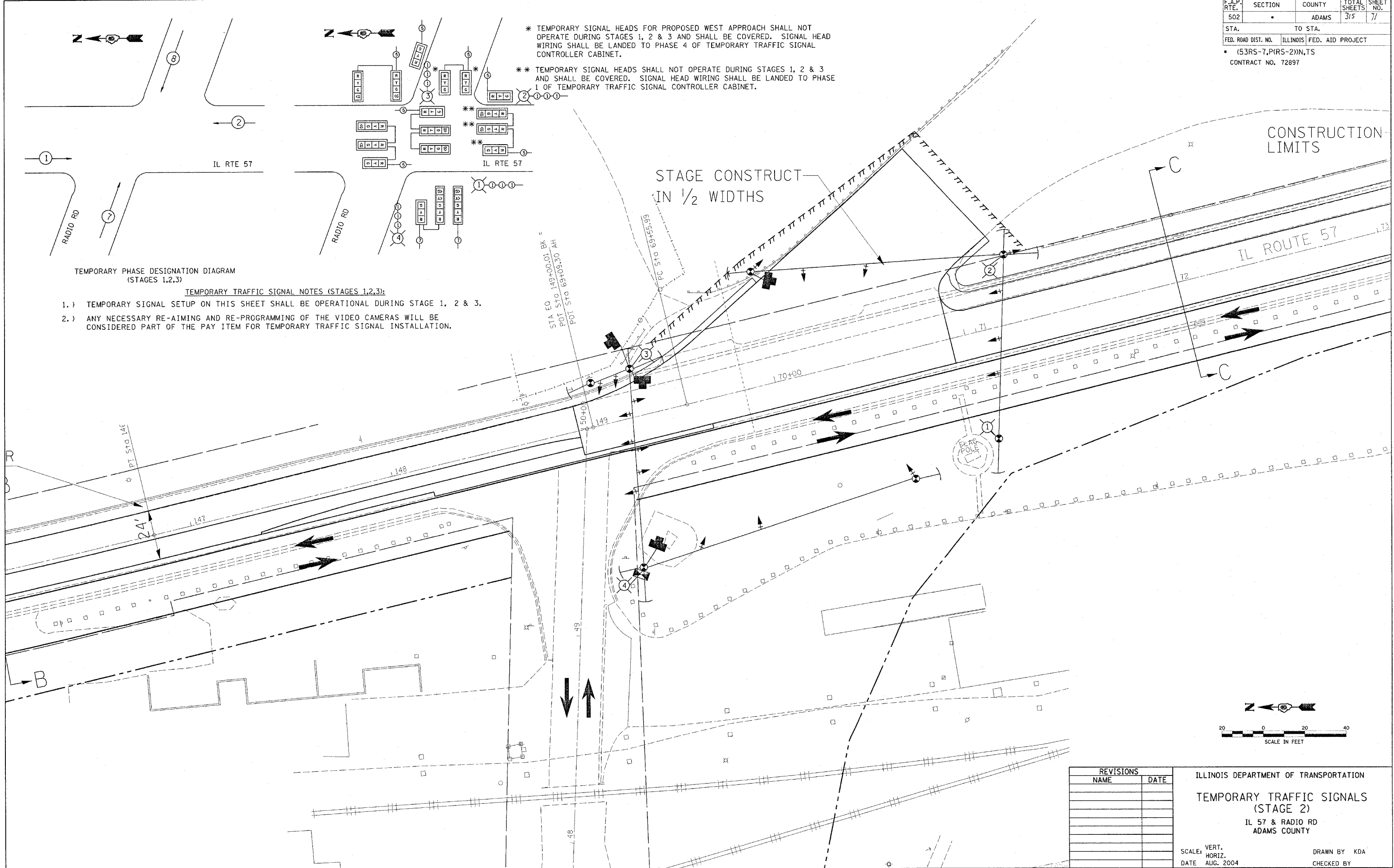
TEMPORARY PHASE DESIGNATION DIAGRAM (STAGES 1,2,3)

TEMPORARY TRAFFIC SIGNAL NOTES (STAGES 1,2,3):

- 1.) TEMPORARY SIGNAL SETUP ON THIS SHEET SHALL BE OPERATIONAL DURING STAGE 1, 2 & 3.
- 2.) ANY NECESSARY RE-AIMING AND RE-PROGRAMMING OF THE VIDEO CAMERAS WILL BE CONSIDERED PART OF THE PAY ITEM FOR TEMPORARY TRAFFIC SIGNAL INSTALLATION.

STAGE CONSTRUCT IN 1/2 WIDTHS

CONSTRUCTION LIMITS



REVISIONS	
NAME	DATE

ILLINOIS DEPARTMENT OF TRANSPORTATION
 TEMPORARY TRAFFIC SIGNALS
 (STAGE 2)
 IL 57 & RADIO RD
 ADAMS COUNTY

SCALE: VERT. HORIZ.
 DATE: AUG. 2004
 DRAWN BY: KDA
 CHECKED BY: