

(53RS-7,P(RS-2))N,TS  
CONTRACT NO. 72897

SUMMARY OF QUANTITIES					
PAY CODE	PAY ITEM	UNITS	TOTAL QUANTITY	J000 - 1A 100 % State QUANTITY	Y031-1F 100 % State QUANTITY
48101200	Aggregate Shoulders, Type B	tons	62	62	
48202800	Bituminous Shoulders, Superpave 10"	sq yd	130	130	
48300500	Portland Cement Concrete Shoulders 10"	sq yd	2235	2235	
552A0900	STORM SEWERS JACKED IN PLACE, CLASS A 24"	FOOT	60	60	
50102400	Concrete Removal	cu yd	5	5	
552A0600	STORM SEWERS JACKED IN PLACE, CLASS A 18"	FOOT	180	180	
54201483	Pipe Culverts, Type 2, Corrugated Steel or Aluminum Culvert Pipe 18"	foot	116	116	
54207153	PIPE CULVERTS, TYPE 1, REINFORCED CONCRETE-ELLIPTICAL, EQUIVALENT ROUND SIZE 18"	FOOT	180	180	
54201489	Pipe Culverts, Type 2, Corrugated Steel or Aluminum Culvert Pipe 24"	foot	60	60	
54206739	PIPE CULVERTS, TYPE 1, REINFORCED CONCRETE, EQUIVALENT ROUND SIZE 24"	FOOT	225	225	
54213657	Precast Reinforced Concrete Flared End Sections 12"	each	1	1	
54213447	END SECTIONS 12"	EACH	1	1	
54213663	Precast Reinforced Concrete Flared End Sections 18"	each	2	2	
54214609	PRECAST REINFORCED CONCRETE FLARED END SECTION, EQUIVALENT ROUND SIZE 24"	EACH	2	2	
54213669	Precast Reinforced Concrete Flared End Sections 24"	each	3	3	
54215979	REINFORCED CONCRETE PIPE ELBOW 24"	EACH	1	1	
60218400	Manholes, Type A, 4'-Diameter, Type 1, Frame, Closed Lid	each	2	2	
XX004758	REINFORCED CONCRETE PIPE TEE, EQUIVALENT ROUND SIZE 24" W/12" RISER	EACH	1	1	
60219000	Manholes, Type A, 4'-Diameter, Type 8, Frame and Grate	each	2	2	
54200439	PIPE CULVERTS, TYPE 1, RCCP 24"	FOOT	55	55	
60219100	Manholes, Type A, 4'-Diameter, Type 9, Frame and Grate	each	1	1	
60240303	Inlets, Type B, Type 9 Frame and Grate	each	2	2	
60260100	Inlets to be Adjusted	each	1	1	
60602500	Concrete Gutter, Type A	foot	1944	1944	
60605000	Combination Concrete Curb and Gutter, Type B-6.24	foot	512	512	
60608600	Combination Concrete Curb and Gutter, Type M-6.06	foot	28	28	
60610400	Combination Concrete Curb and Gutter, Type M-6.24	foot	26	26	
60610900	Combination Concrete Curb and Gutter, Type M-6.24 (Variable Width Gutter Flag)	foot	27	27	
60618300	Concrete Median Surface 4"	sq ft	167	167	
60622400	Concrete Median, Type SM-6.06	sq ft	10366	10366	
60624600	Corrugated Median	sq ft	1784	1784	
* 63000000	Steel Plate Beam Guard Rail, Type A	foot	25	25	
* 63100167	Traffic Barrier Terminal, Type 1 Special (Tangent)	each	2	2	
67100100	Mobilization	L sum	1	1	
67000400	Engineer's Field Office, Type A	cal mo	6	6	
70100200	Traffic Control and Protection, Standard 701331	each	1	1	
70100450	Traffic Control and Protection, Standard 701201	L sum	1	1	
70100460	Traffic Control and Protection, Standard 701306	L sum	1	1	
70400100	TEMPORARY CONCRETE BARRIER	FOOT	25	25	
70100500	Traffic Control and Protection, Standard 701326	L sum	1	1	

\* SPECIALTY ITEMS

REVISIONS	
NAME	DATE

ILLINOIS DEPARTMENT OF TRANSPORTATION  
SUMMARY OF QUANTITIES  
FAP 502 (IL 57) & RADIO ROAD  
SECTION (53RS-7, P(RS-2)) N, TS  
ADAMS COUNTY  
QUINCY, IL  
VERT. SCALE: 1"=20'  
HORIZ. SCALE: 1"=40'  
DATE: 01-23-04  
DRAWN BY: TMJ  
CHECKED BY: MEB

es:\projects\0553004\cover.dgn  
2/16/2005  
\*REF01

F.A.P. RTE.	SECTION	COUNTY	TOTAL SHEETS	SHEET NO.
502		ADAMS	315	6
STA.		TO STA.		
FED. ROAD DIST. NO.		ILLINOIS FED. AID PROJECT		

\*(53RS-7,P(RS-2))N,TS  
CONTRACT NO. 72897

ROAD CONSTRUCTION SCHEDULE - BY STAGES						
PAY ITEM	STAGE I	STAGE II	STAGE III	STAGE IV	STAGE V	TOTALS
GUTTER REMOVAL - FOOT	1522	1302				2824
DRIVEWAY PAVEMENT REMOVAL - SQ YD	431	894				1325
TEMPORARY BITUMINOUS PAVEMENT - SQ YD	6652	2614				9266
PAVEMENT REMOVAL - SQ YD		6225	750	510		7485
BITUMINOUS SHOULDER REMOVAL - SQ YD		1024				1024
TEMPORARY PAVEMENT REMOVAL - SQ YD			6652		2614	9266
PORTLAND CEMENT CONCRETE PAVEMENT 10" (JOINTED) - SQ YD		6577	6815	803	80	14275
PORTLAND CEMENT CONCRETE SHOULDERS 10" - SQ YD		815	1041	46	333	2235
SUB-BASE GRANULAR MATERIAL, TYPE B 12" - SQ YD		7392	7856	849	1801	17898
SUB-BASE GRANULAR MATERIAL, TYPE C 4" - SQ YD		815	1041	46	333	2235
STABILIZED SUB-BASE 4" - SQ YD		6577	6815	803	1468	15663
COMBINATION CONCRETE CURB AND GUTTER, TYPE B-6.24 - FOOT		97	370	45		512
CONCRETE GUTTER, TYPE A - FOOT		687	1202	55		1944
PORTLAND CEMENT CONCRETE DRIVEWAY PAVEMENT, 8 INCH - SQ YD		75	755			830
BITUMINOUS CONCRETE BINDER COURSE, SUPERPAVE, IL-19.0, N50 - TONS				23		23
BITUMINOUS CONCRETE SURFACE COURSE, SUPERPAVE, MIX "D", N90 - TONS				44		44
BITUMINOUS CONCRETE BINDER COURSE, SUPERPAVE, IL-19.0, N70 - TONS				36		36
BITUMINOUS SHOULDERS SUPERPAVE 10" - SQ YD				130		130
CONCRETE MEDIAN, TYPE SM-6.06 - SQ FT					10366	10366
CORRUGATED MEDIAN - SQ FT					1784	1784
CONCRETE MEDIAN SURFACE 4" - SQ FT					167	167
COMBINATION CONCRETE CURB AND GUTTER, TYPE M-6.06 - FOOT					28	28
COMBINATION CONCRETE CURB AND GUTTER, TYPE M-6.24 - FOOT					26	26
COMBINATION CONCRETE CURB AND GUTTER, TYPE M-6.24 (VARIABLE WIDTH GUTTER FLAG) - FOOT					27	27
AGGREGATE SHOULDERS, TYPE B - TONS					62	62

INLET SCHEDULE - EACH					
LOCATION	IN, SPEC, TY A, TY 15, FR & G	IN, TY B, TY 8, FR & G	IN, TY B, TY 9, FR & G	IN, TY A, TY 15, FR & G	INLET TO BE ADJUSTED
ST 1 - 144+75.00, 14.88' RT	1				
ST 5 - 147+25.00, 11.40' RT	1				
ST 2 - 144+75.00, 40.00' RT		1			
ST 3 - 145+25.00, 46.30' RT		1			
ST 6 - 148+75.00, 58.50' RT		1			
ST 9 - 72+05.50, 39.70' RT			1		
ST 10 - 72+06.00, 19.50' RT				1	
IL 57 - 72+06.00, 21.00' LT					1
<b>TOTALS</b>	<b>2</b>	<b>3</b>	<b>1</b>	<b>1</b>	<b>1</b>

MANHOLE SCHEDULE - EACH			
LOCATION	MH, TY, A 4' DIA TY 8 FR & G	MH, TY, A 4' DIA TY 1 FR, CL	MH, TY, A 4' DIA TY 9, FR & G
141+90.00, 30' RT	1		
ST 7 - 70+41.95, 67.8' RT	1		
142+31.00, 32' RT		1	
72+05.00, 46' RT		1	
ST 4 147+25.00, 51.50' RT			1
<b>TOTALS</b>	<b>2</b>	<b>2</b>	<b>1</b>

RIP RAP SCHEDULE		
STATION	FILTER FABRIC FOR USE WITH RIPRAP	STONE RIPRAP CLASS B3
142+39.00, 50' lt	61 sq yd	61 sq yd

END SECTION SCHEDULE EACH		
STATION	PRC FL- END SECTION - 12"	PRC FL- END SECTION - 24"
IL 57 - STA 142+25.00, 34' RT	1	
RADIO - STA 47+25.00, 42.1' RT		1
SIXTH - STA 9+00.00, CL		2
<b>TOTALS</b>	<b>1</b>	<b>3</b>

PIPE CULVERT SCHEDULE - FOOT		
LOCATION	PC, TY 2 CS/AL PC, TY 2 CS/AL CULVERT PIPE - 18"	PIPE CULVERT, TY 1, RCCP 24"
<b>ALONG RADIO ROAD</b>		
STA 41+54.44, 25.20' LT	48	
STA 42+60.00, 28.00' LT	68	
<b>ALONG SIXTH STREET</b>		
STA 9+00.00, CL		55
<b>TOTALS</b>	<b>116</b>	<b>55</b>

SEEDING SCHEDULE - ACRE		
LOCATION	SEEDING CLASS, 2A	
	LEFT	RIGHT
<b>IL 57</b>		
135+25.00 - 149+00.00	0.23	0.17
70+00.00 - 83+00.00	0.08	0.11
<b>RADIO ROAD</b>		
37+25.00 - 40+00.00	0.08	0.09
40+00.00 - 49+79.00	0.21	0.28
<b>SIXTH STREET</b>		
6+75.00 - 8+75.00	0.04	0.04
<b>EIGHTH STREET</b>		
0+50.00 - 1+00.00		0.01
<b>SUBTOTAL</b>	<b>0.64</b>	<b>0.7</b>
<b>TOTAL</b>	<b>1.34</b>	

TEMPORARY SEEDING SCHEDULE		
LOCATION	TEMPORARY SEEDING (ACRES)	
	LEFT	RIGHT
STAGE I - IL 57 NORTH LEG		0.13
STAGE II - IL 57 SOUTH LEG		0.19
STAGE II - IL 57 NORTH LEG	0.14	
STAGE II - IL 57 SOUTH LEG	0.1	
STAGE II - RADIO ROAD	0.03	
STAGE III - IL 57 NORTH LEG		0.17
STAGE III - RADIO ROAD	0.05	0.15
<b>SUBTOTAL</b>	<b>0.32</b>	<b>0.64</b>
<b>TOTAL</b>	<b>0.96</b>	

REVISIONS	
NAME	DATE
Rev. Sheet	4-19-05

ILLINOIS DEPARTMENT OF TRANSPORTATION  
**SCHEDULE OF QUANTITIES**  
FAP 502 (IL 57) & RADIO ROAD  
SECTION (53RS-7, P(RS-2)) N, TS  
ADAMS COUNTY  
QUINCY, IL  
SCALE: VERT.      DRAWN BY TMJ  
          HORIZ.      CHECKED BY MEB  
DATE 01-23-04

•DDN-SPEC•  
•DATE-TIME•  
•REF01

F.A.P. RTE.	SECTION	COUNTY	TOTAL SHEETS	SHEET NO.
502		ADAMS	315	7
STA.		TO STA.		
FED. ROAD DIST. NO.		ILLINOIS FED. AID PROJECT		

EARTHWORK SCHEDULE			
	EARTH EXCAVATION - CU YD	EMBANKMENT - CU YD	WASTE - CU YD
<b>IL 57</b>			
STAGE ONE	2527	148	2349
STAGE TWO	3241	11	3228
STAGE THREE	1790	890	722
STAGE FOUR	0	6	0
STAGE FIVE	480	211	227
<b>RADIO ROAD</b>			
STAGE ONE	0	0	0
STAGE TWO	111	46	55
STAGE THREE	2025	484	1444
STAGE FOUR	442	109	311
STAGE FIVE	483	75	403
<b>TOTAL</b>	<b>11109</b>	<b>1980</b>	<b>8739</b>

NOTES: 1) Embankment quantity for information only  
2) 20% Shrinkage Factor included

STORM SEWER SCHEDULE FOOT					
LOCATION	SS,CLA, TY 1 - 12"	SS,CLA, TY 2 - 12"	SS,CLA, TY 2 - 18"	SS,CLA, TY 2 - 24"	TRENCH BACKFILL (CY)
<b>ALONG IL 57</b>					
STA 142+31.00, 32.00' RT TO					
STA 142+75.00, 34.00' RT	45				6
ST 1 to ST 2	25				3
ST 5 to ST 4	41				10
ST 2 to ST 3		51			42
ST 3 to ST 4		203			161
ST 4 to ST 6			150		103
ST 6 to ST 7			159		65
ST 7 to ST 8			165		131
ST 10 to ST 9			21		7
ST 9 to ST 8			7		4
<b>ALONG RADIO ROAD</b>					
STA 45+75.00, 29.00' LT TO					
STA 46+75.00, 29' LT			77		53
STA 47+25.00, 42.10' RT TO					
STA 49+93.69, 37.77' RT				263	340
<b>ALONG SIXTH STREET</b>					
STA 9+00.00, CL					
<b>TOTALS</b>	<b>111</b>	<b>254</b>	<b>579</b>	<b>263</b>	<b>925</b>

STRIPING SCHEDULE								
LOCATION	POLYUREA PAVEMENT MARKING SPECIAL							
	LINE 5" - FT		LINE 6" - FT	LINE 8" - FT	LINE 12" - FT		LINE 24" - FT	LET & SYM - SQ FT
	WHITE	YELLOW	WHITE	WHITE	WHITE	YELLOW	WHITE	WHITE
STA 138+00 to 143+00	1067	1142				18	24	15.6
STA 143+00 to 148+50	1409	1102	88					78
STA 148+50 to 74+00	1584	637	15	39	10	27	161	119.6
STA 74+00 to 79+50	1335	1102	70	147	34		24	108
STA 79+50 to 81+27	354	354						
STA 42+50 to 45+50	703	760				63		
STA 45+50 to 50+00	1227	982		217	79	240	90	153.6
<b>SUBTOTAL</b>	<b>7679</b>	<b>6079</b>			<b>123</b>	<b>348</b>		
<b>TOTALS</b>	<b>13758</b>	<b>173</b>	<b>403</b>		<b>471</b>	<b>299</b>		<b>474.8</b>

REFLECTIVE PAVEMENT MARKER SCHEDULE - EACH			
LOCATION	TWO WAY AMBER	ONE WAY AMBER	ONE WAY CRYSTAL
JOBSITE	38	124	49
<b>TOTALS</b>		<b>211</b>	

* ELLIPTICAL STORM SEWER SCHEDULE				
LOCATION	PIPE CULVERTS, TY 1, RC, EQRS - 24" FOOT	PRC FLARED END SECTION, EQRS - 24" EACH	REINF CONC- PIPE ELBOW 4" EACH	END SECTIONS - 12" EACH
<b>ALONG RADIO ROAD</b>				
STA 40+71.10, 29.00' RT to				
STA 43+08.00, 28.6' RT	225	2		
STA41+63.30, 23.90' RT			1	
STA41+74.00, 29.00' RT				1
<b>TOTALS</b>	<b>225</b>	<b>2</b>	<b>1</b>	<b>1</b>

\* this schedule is for tying into the county highway project at the most westerly section of the improvement

STORM SEWER JACKED IN PLACE SCHEDULE			
LOCATION	SS, JIP - 24"	SS, JIP - 18" FOOT	PIPE CULVERTS, TY 1, RC, E, EQRS - 18" FOOT
STA 44+45.47, 31' RT		96	96
STA 44+59.97, 34.43' LT		84	84
<b>** ALONG RADIO ROAD</b>			
24" storm sewer run from sta. 47+25.00,			
42.10' RT to sta 49+93.69, 37.77' RT	60		
<b>TOTALS</b>	<b>60</b>	<b>180</b>	<b>180</b>

\*\* storm sewer for this section included in storm sewer schedule

REVISIONS	
NAME	DATE
Rev. Sheet	4-19-05

ILLINOIS DEPARTMENT OF TRANSPORTATION  
**SCHEDULE OF QUANTITIES**  
FAP 502 (IL 57) & RADIO ROAD  
SECTION (53RS-7, P(RS-2)) N, TS  
ADAMS COUNTY  
QUINCY, IL

SCALE: VERT.  
HORIZ.  
DATE 01-23-04

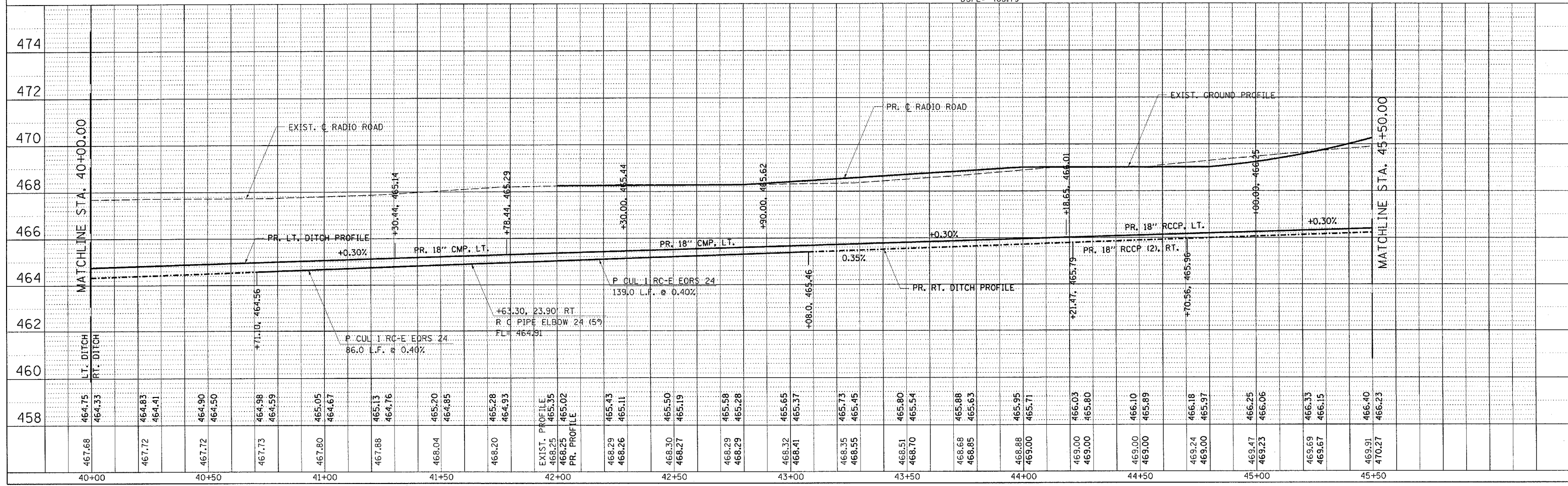
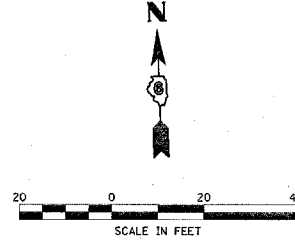
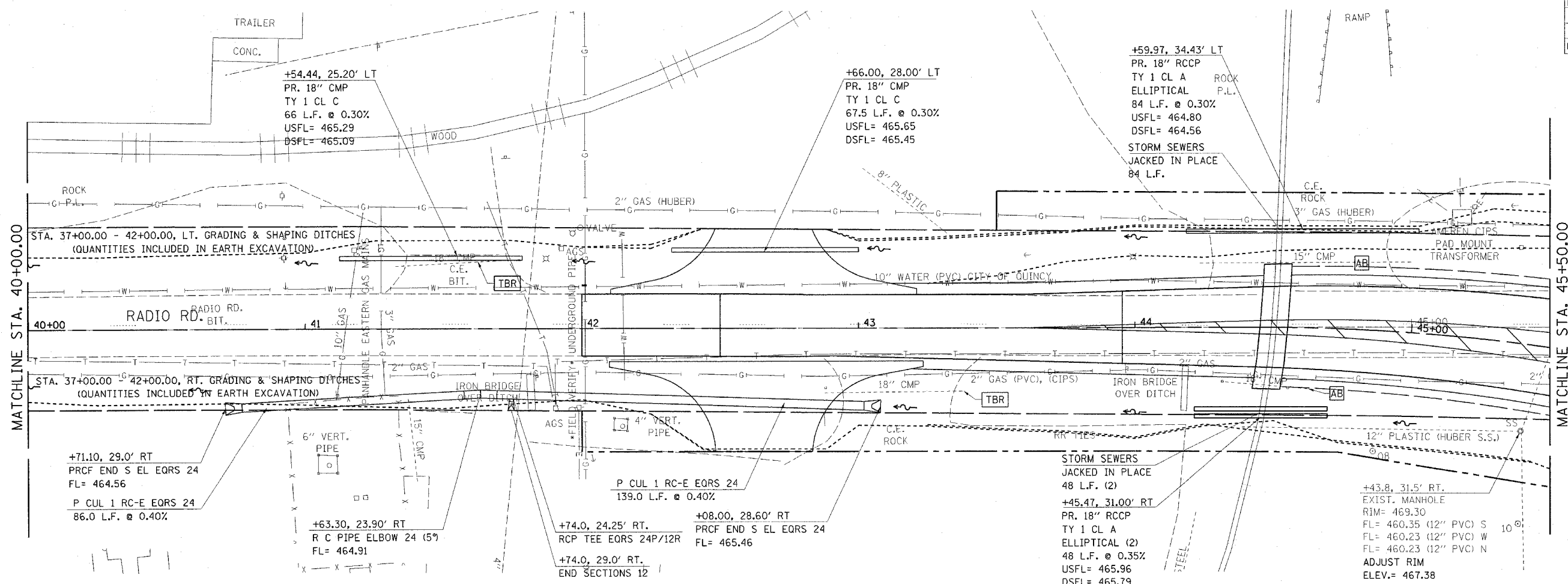
DRAWN BY TMJ  
CHECKED BY MEB

F.A.P. RTE.	SECTION	COUNTY	TOTAL SHEETS	SHEET NO.
502	.	ADAMS	315	49
STA. 40+00.00		TO STA. 45+50.00		
FED. ROAD DIST. NO. ILLINOIS FED. AID PROJECT				
• (53RS-7, PIRS-2)N, TS				
CONTRACT NO. 72897				

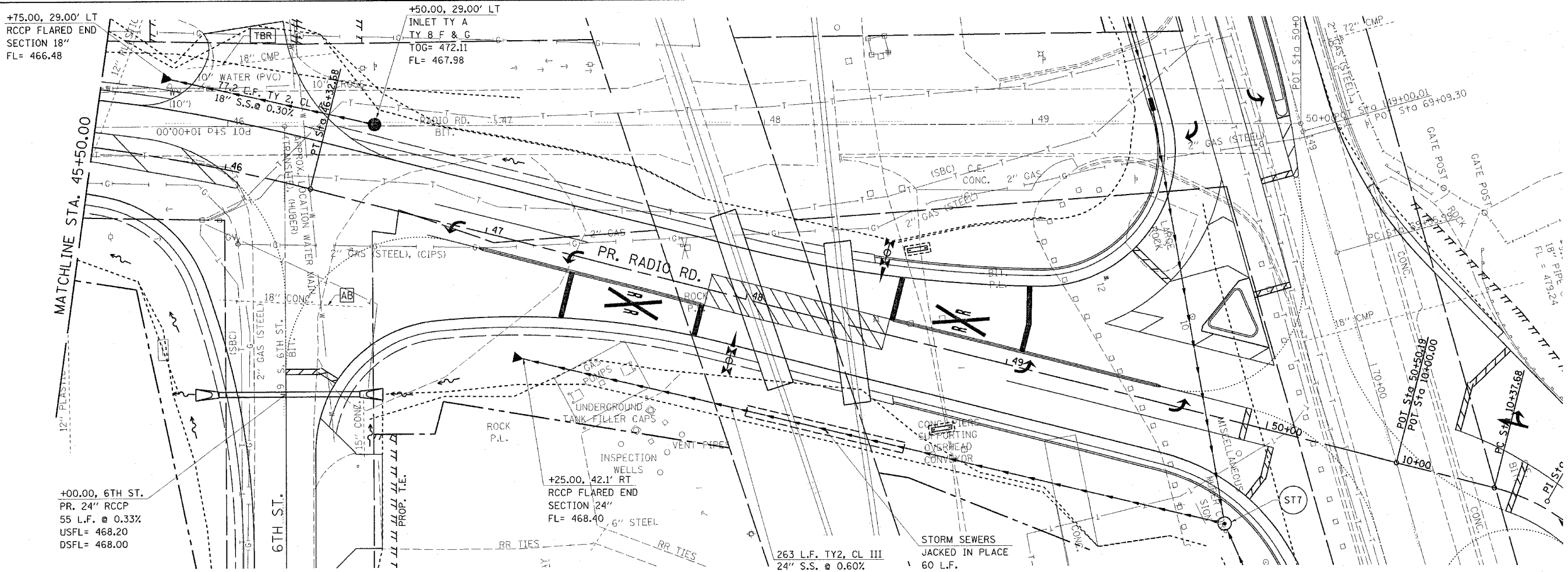
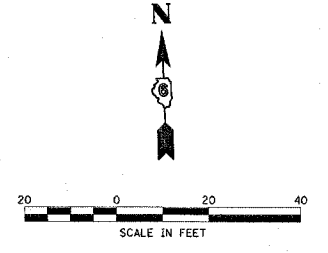
DATE	BY

DATE	BY

\*DON-SPEC\*  
 \*DATE-TIME\*  
 \*REF:01



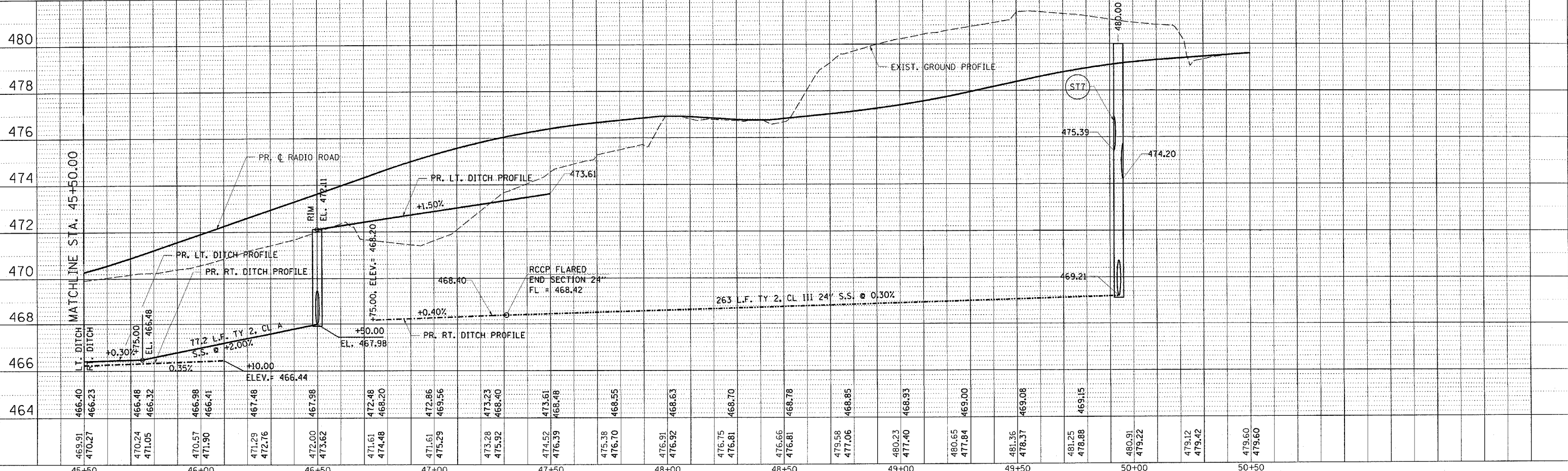
F.A.P. RTE.	SECTION	COUNTY	TOTAL SHEETS	SHEET NO.
502		ADAMS	315	50
STA.		TO STA.		
FED. ROAD DIST. NO.		ILLINOIS FED. AID PROJECT		
* [53RS-7, P(RS-2)IN, TS				
CONTRACT NO. 72897				



ST7 70+41.95, 67.8' RT (IL 57) =  
 49+93.69, 37.77' RT. (PR. RADIO RD.)  
 MANHOLE TY A  
 4' DIA., TY B F & G  
 RIM= 480.00  
 FL= 475.39 (N)  
 FL= 474.20 (S)  
 FL= 469.21 (W)

PLAN	DATE
SURVEYED	
PLOTTED	
NOTED	
NO. _____	

PROFILE	DATE
SURVEYED	
PLOTTED	
NOTED	
NO. _____	



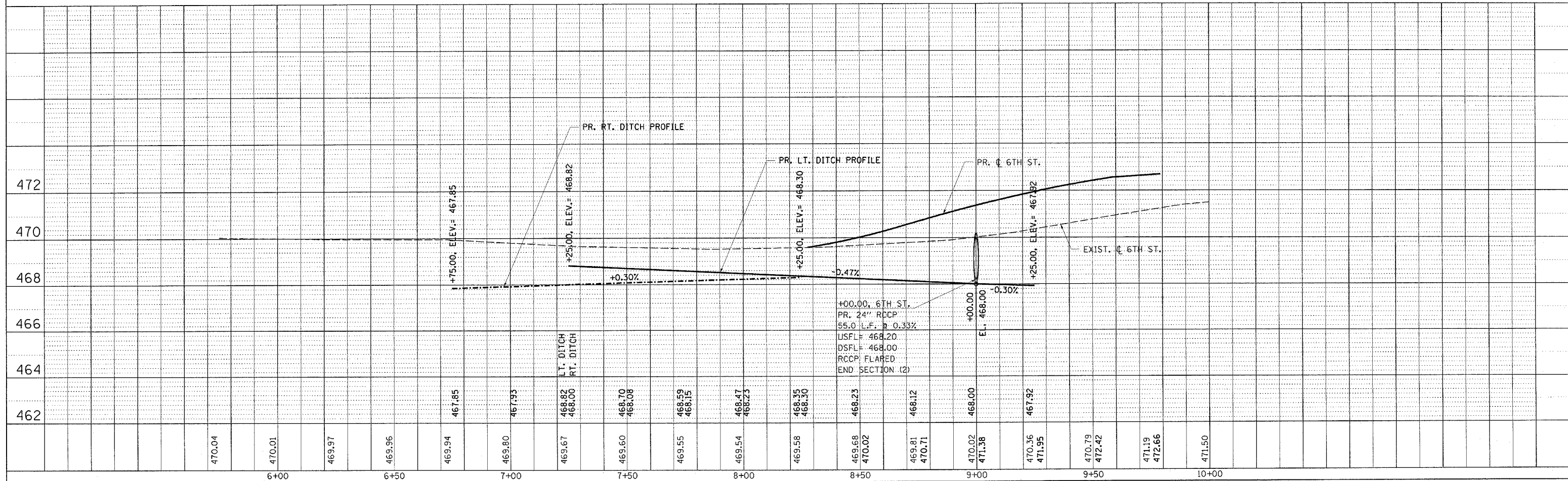
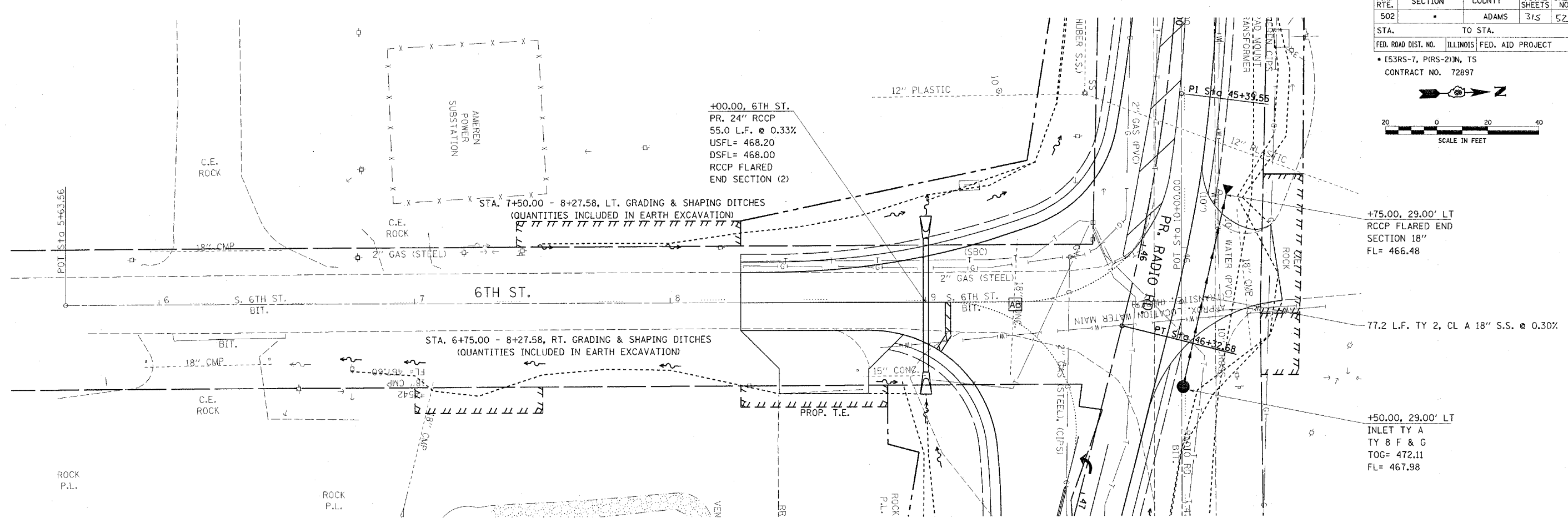
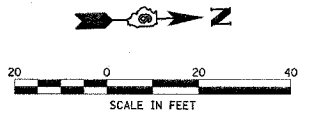
\*DN-SPEC\*  
 \*DATE-TIME\*  
 \*REF-01

DATE	
BY	
APPROVED	
PLANNED	
NOTED	
NO.	
NO.	
NO.	
NO.	

DATE	
BY	
APPROVED	
PLANNED	
NOTED	
NO.	
NO.	
NO.	
NO.	

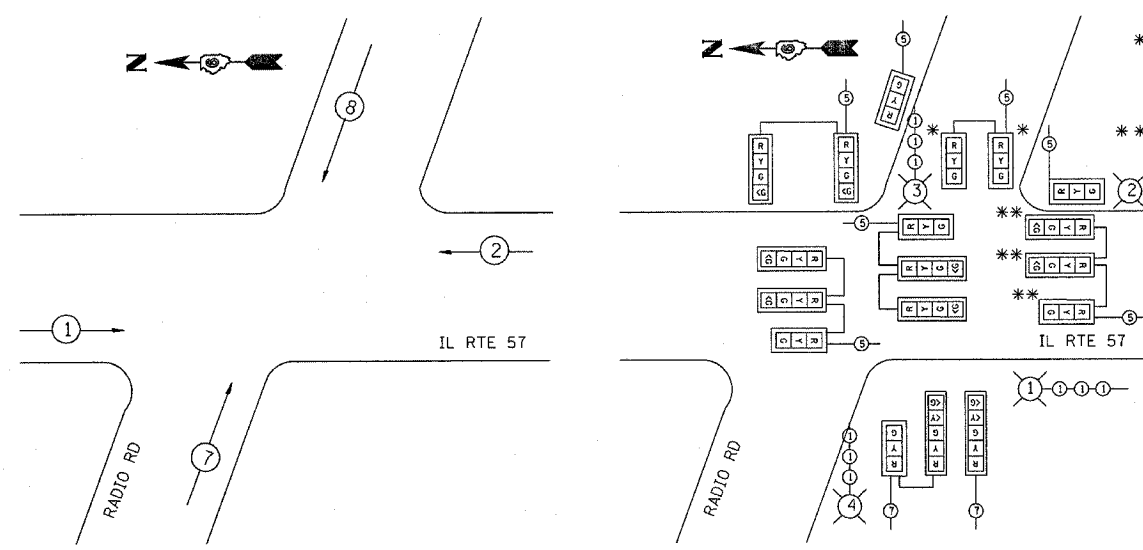
\*DGN-SPEC\*  
\*DATE-TIME\*  
\*REF01

F.A.P. RTE.	SECTION	COUNTY	TOTAL SHEETS	SHEET NO.
502	.	ADAMS	315	52
STA.	TO STA.			
FED. ROAD DIST. NO.	ILLINOIS	FED. AID PROJECT		
• [53RS-7, P(RS-2)N, TS				
CONTRACT NO. 72897				



\* TEMPORARY SIGNAL HEADS FOR PROPOSED WEST APPROACH SHALL NOT OPERATE DURING STAGES 1, 2 & 3 AND SHALL BE COVERED. SIGNAL HEAD WIRING SHALL BE LANDED TO PHASE 4 OF TEMPORARY TRAFFIC SIGNAL CONTROLLER CABINET.

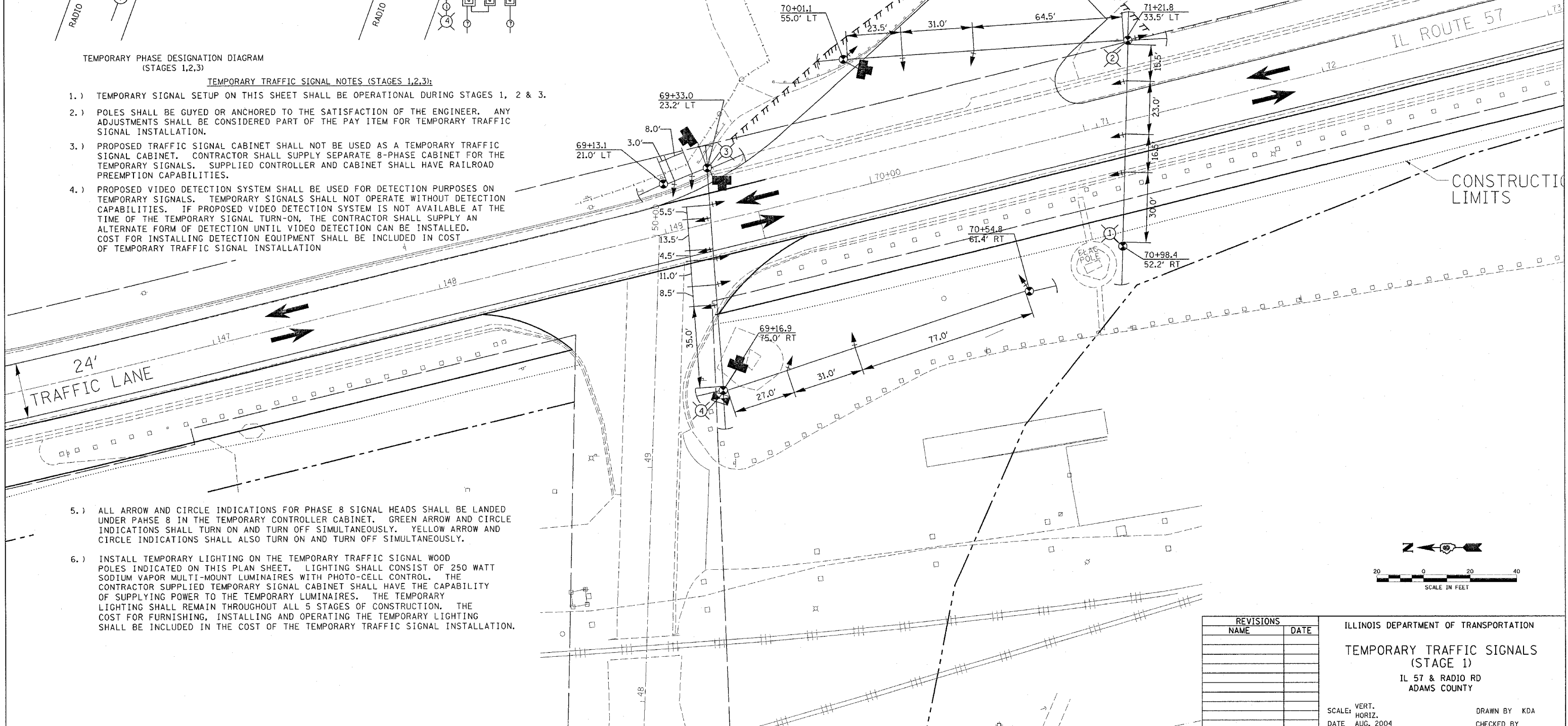
\*\* TEMPORARY SIGNAL HEADS SHALL NOT OPERATE DURING STAGES 1, 2 & 3 AND SHALL BE COVERED. SIGNAL HEAD WIRING SHALL BE LANDED TO PHASE 1 OF TEMPORARY TRAFFIC SIGNAL CONTROLLER CABINET.



TEMPORARY PHASE DESIGNATION DIAGRAM (STAGES 1,2,3)

TEMPORARY TRAFFIC SIGNAL NOTES (STAGES 1,2,3):

- 1.) TEMPORARY SIGNAL SETUP ON THIS SHEET SHALL BE OPERATIONAL DURING STAGES 1, 2 & 3.
- 2.) POLES SHALL BE GUYED OR ANCHORED TO THE SATISFACTION OF THE ENGINEER. ANY ADJUSTMENTS SHALL BE CONSIDERED PART OF THE PAY ITEM FOR TEMPORARY TRAFFIC SIGNAL INSTALLATION.
- 3.) PROPOSED TRAFFIC SIGNAL CABINET SHALL NOT BE USED AS A TEMPORARY TRAFFIC SIGNAL CABINET. CONTRACTOR SHALL SUPPLY SEPARATE 8-PHASE CABINET FOR THE TEMPORARY SIGNALS. SUPPLIED CONTROLLER AND CABINET SHALL HAVE RAILROAD PREEMPTION CAPABILITIES.
- 4.) PROPOSED VIDEO DETECTION SYSTEM SHALL BE USED FOR DETECTION PURPOSES ON TEMPORARY SIGNALS. TEMPORARY SIGNALS SHALL NOT OPERATE WITHOUT DETECTION CAPABILITIES. IF PROPOSED VIDEO DETECTION SYSTEM IS NOT AVAILABLE AT THE TIME OF THE TEMPORARY SIGNAL TURN-ON, THE CONTRACTOR SHALL SUPPLY AN ALTERNATE FORM OF DETECTION UNTIL VIDEO DETECTION CAN BE INSTALLED. COST FOR INSTALLING DETECTION EQUIPMENT SHALL BE INCLUDED IN COST OF TEMPORARY TRAFFIC SIGNAL INSTALLATION



- 5.) ALL ARROW AND CIRCLE INDICATIONS FOR PHASE 8 SIGNAL HEADS SHALL BE LANDED UNDER PHASE 8 IN THE TEMPORARY CONTROLLER CABINET. GREEN ARROW AND CIRCLE INDICATIONS SHALL TURN ON AND TURN OFF SIMULTANEOUSLY. YELLOW ARROW AND CIRCLE INDICATIONS SHALL ALSO TURN ON AND TURN OFF SIMULTANEOUSLY.
- 6.) INSTALL TEMPORARY LIGHTING ON THE TEMPORARY TRAFFIC SIGNAL WOOD POLES INDICATED ON THIS PLAN SHEET. LIGHTING SHALL CONSIST OF 250 WATT SODIUM VAPOR MULTI-MOUNT LUMINAIRES WITH PHOTO-CELL CONTROL. THE CONTRACTOR SUPPLIED TEMPORARY SIGNAL CABINET SHALL HAVE THE CAPABILITY OF SUPPLYING POWER TO THE TEMPORARY LUMINAIRES. THE TEMPORARY LIGHTING SHALL REMAIN THROUGHOUT ALL 5 STAGES OF CONSTRUCTION. THE COST FOR FURNISHING, INSTALLING AND OPERATING THE TEMPORARY LIGHTING SHALL BE INCLUDED IN THE COST OF THE TEMPORARY TRAFFIC SIGNAL INSTALLATION.

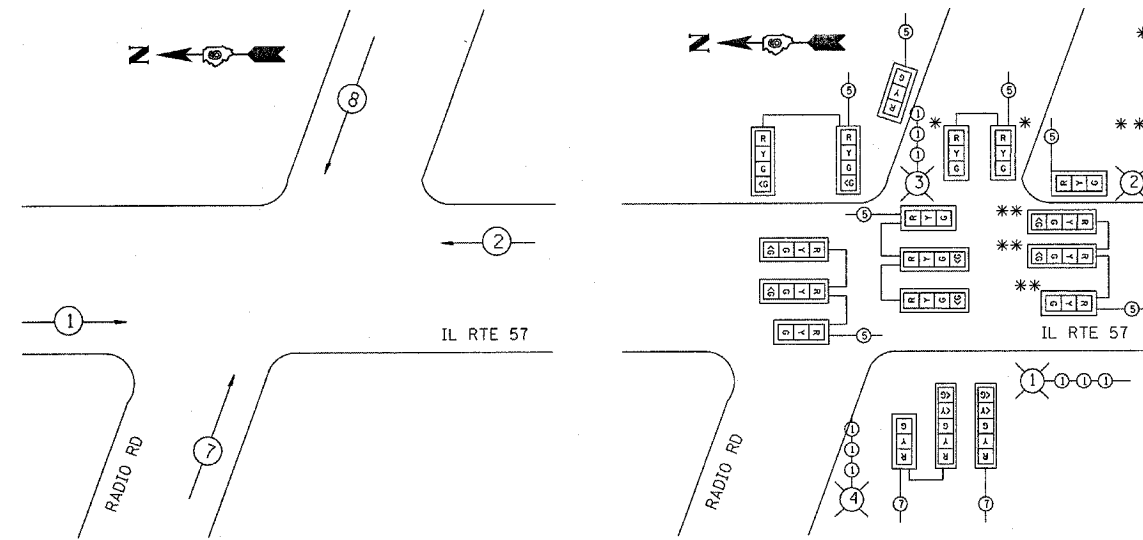
REVISIONS	
NAME	DATE

ILLINOIS DEPARTMENT OF TRANSPORTATION  
**TEMPORARY TRAFFIC SIGNALS**  
 (STAGE 1)  
 IL 57 & RADIO RD  
 ADAMS COUNTY

VERT. SCALE:     DRAWN BY KDA  
 HORIZ. SCALE:     CHECKED BY  
 DATE: AUG. 2004

\* TEMPORARY SIGNAL HEADS FOR PROPOSED WEST APPROACH SHALL NOT OPERATE DURING STAGES 1, 2 & 3 AND SHALL BE COVERED. SIGNAL HEAD WIRING SHALL BE LANDED TO PHASE 4 OF TEMPORARY TRAFFIC SIGNAL CONTROLLER CABINET.

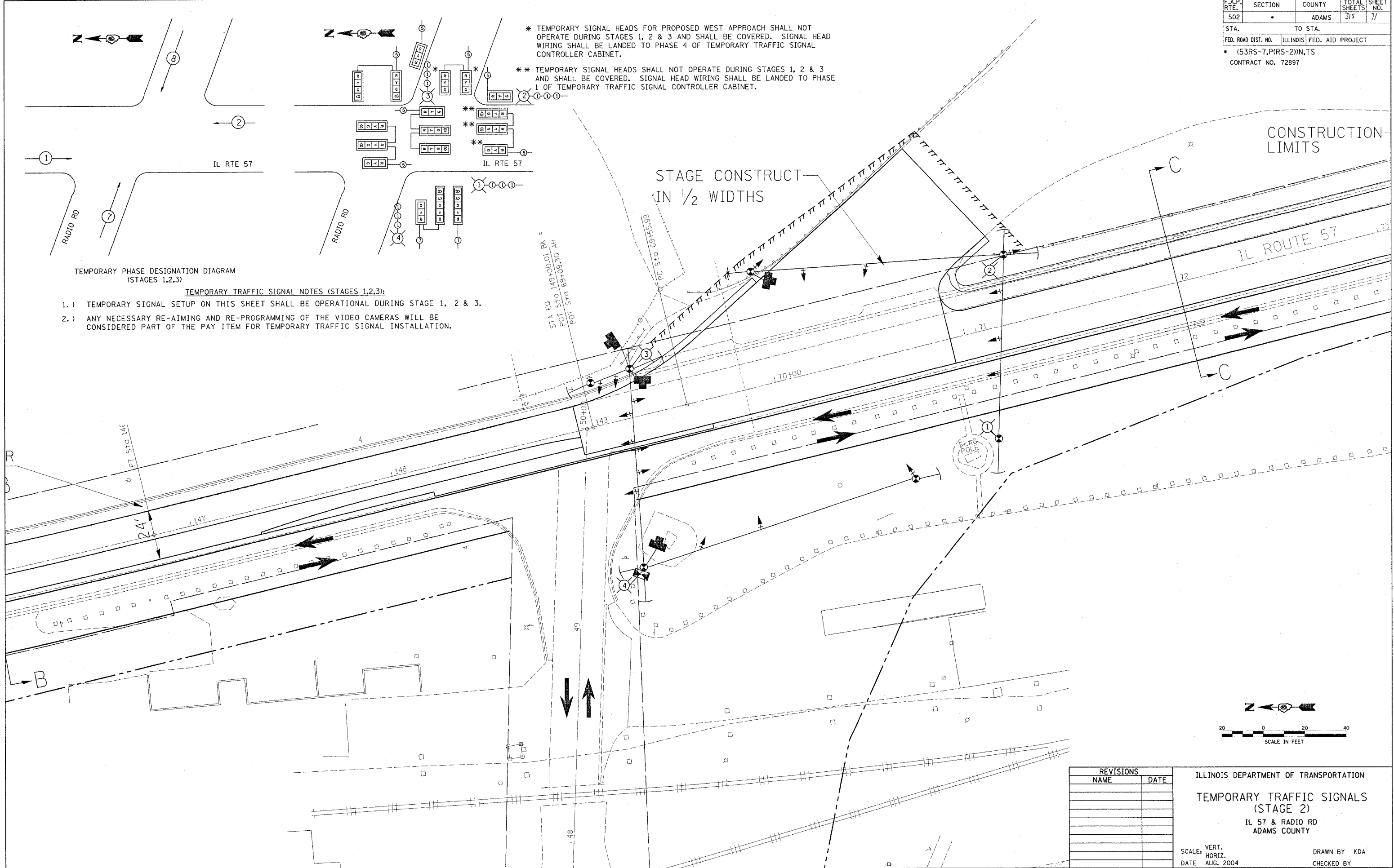
\*\* TEMPORARY SIGNAL HEADS SHALL NOT OPERATE DURING STAGES 1, 2 & 3 AND SHALL BE COVERED. SIGNAL HEAD WIRING SHALL BE LANDED TO PHASE 1 OF TEMPORARY TRAFFIC SIGNAL CONTROLLER CABINET.



TEMPORARY PHASE DESIGNATION DIAGRAM (STAGES 1,2,3)

TEMPORARY TRAFFIC SIGNAL NOTES (STAGES 1,2,3):

- TEMPORARY SIGNAL SETUP ON THIS SHEET SHALL BE OPERATIONAL DURING STAGE 1, 2 & 3.
- ANY NECESSARY RE-AIMING AND RE-PROGRAMMING OF THE VIDEO CAMERAS WILL BE CONSIDERED PART OF THE PAY ITEM FOR TEMPORARY TRAFFIC SIGNAL INSTALLATION.



REVISIONS	
NAME	DATE

ILLINOIS DEPARTMENT OF TRANSPORTATION  
 TEMPORARY TRAFFIC SIGNALS  
 (STAGE 2)  
 IL 57 & RADIO RD  
 ADAMS COUNTY

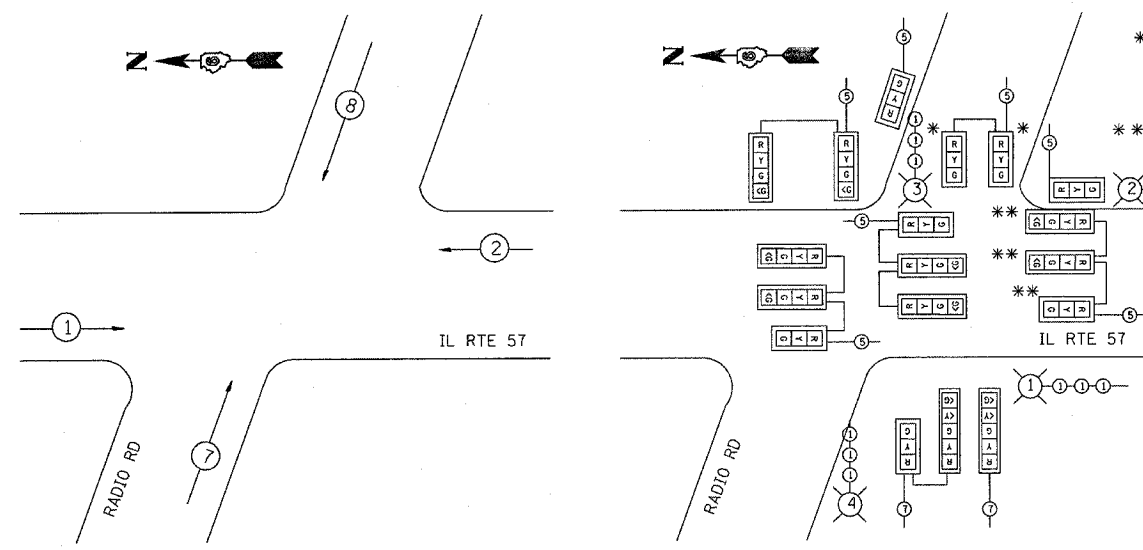
SCALE: VERT. HORIZ.  
 DATE: AUG. 2004  
 DRAWN BY: KDA  
 CHECKED BY:



F.A.P. RTE.	SECTION	COUNTY	TOTAL SHEETS	SHEET NO.
502		ADAMS	315	72
STA.	TO STA.			
FED. ROAD DIST. NO.	ILLINOIS	FED. AID PROJECT		
• (53RS-7,(RS-2))N,TS				
CONTRACT NO. 72897				

\* TEMPORARY SIGNAL HEADS FOR PROPOSED WEST APPROACH SHALL NOT OPERATE DURING STAGES 1, 2 & 3 AND SHALL BE COVERED. SIGNAL HEAD WIRING SHALL BE LANDED TO PHASE 4 OF TEMPORARY TRAFFIC SIGNAL CONTROLLER CABINET.

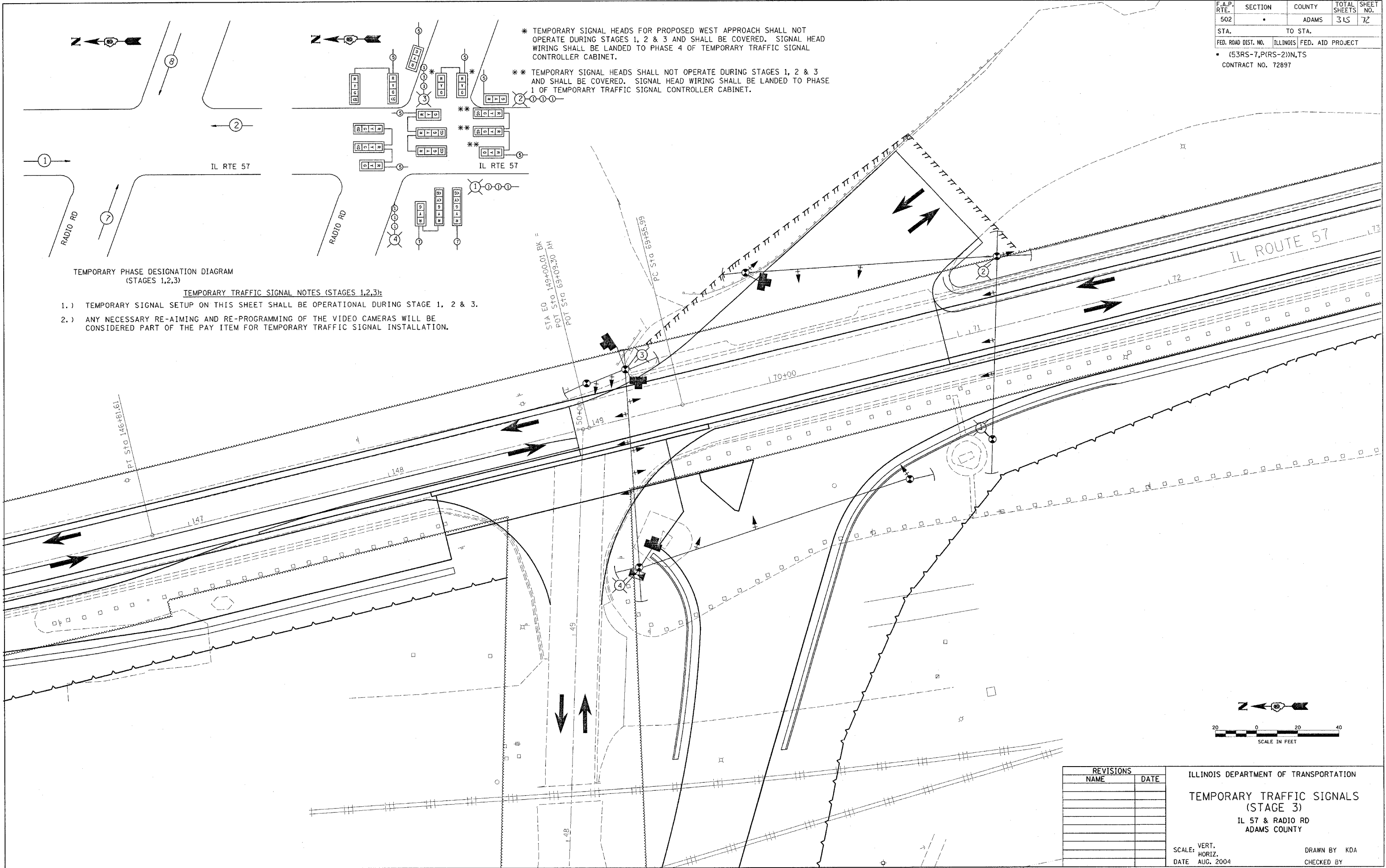
\*\* TEMPORARY SIGNAL HEADS SHALL NOT OPERATE DURING STAGES 1, 2 & 3 AND SHALL BE COVERED. SIGNAL HEAD WIRING SHALL BE LANDED TO PHASE 1 OF TEMPORARY TRAFFIC SIGNAL CONTROLLER CABINET.



TEMPORARY PHASE DESIGNATION DIAGRAM (STAGES 1,2,3)

TEMPORARY TRAFFIC SIGNAL NOTES (STAGES 1,2,3):

- 1.) TEMPORARY SIGNAL SETUP ON THIS SHEET SHALL BE OPERATIONAL DURING STAGE 1, 2 & 3.
- 2.) ANY NECESSARY RE-AIMING AND RE-PROGRAMMING OF THE VIDEO CAMERAS WILL BE CONSIDERED PART OF THE PAY ITEM FOR TEMPORARY TRAFFIC SIGNAL INSTALLATION.



REVISIONS	
NAME	DATE

ILLINOIS DEPARTMENT OF TRANSPORTATION  
 TEMPORARY TRAFFIC SIGNALS  
 (STAGE 3)  
 IL 57 & RADIO RD  
 ADAMS COUNTY

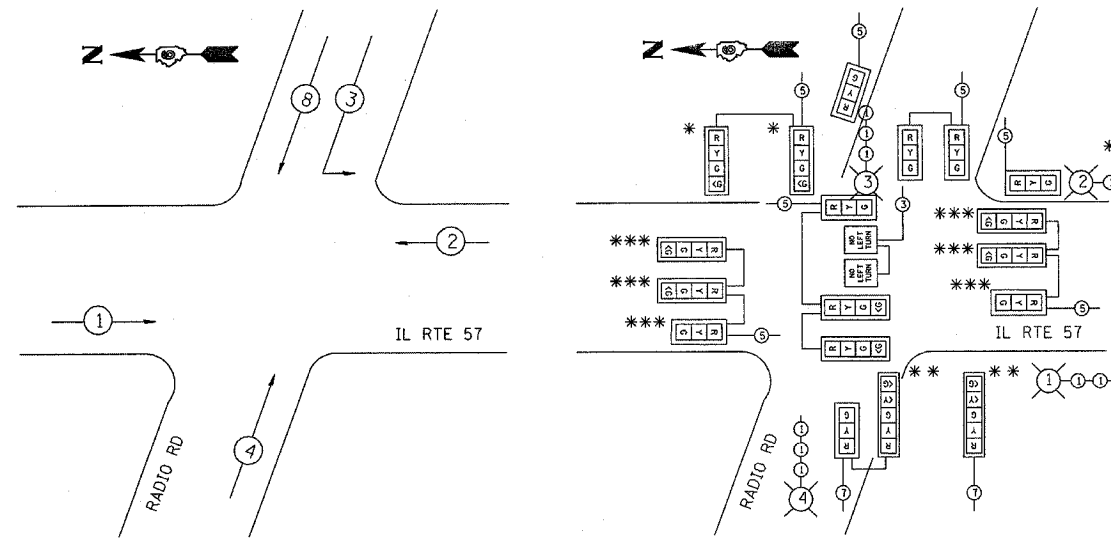
SCALE: VERT.      DRAWN BY KDA  
 HORIZ.            CHECKED BY  
 DATE AUG. 2004

F.A.P. RTE.	SECTION	COUNTY	TOTAL SHEETS	SHEET NO.
502	.	ADAMS	315	73
STA.		TO STA.		
FED. ROAD DIST. NO.	ILLINOIS	FED. AID PROJECT		
* (53RS-7,P(RS-2))N,TS				
CONTRACT NO. 72897				

\* TEMPORARY SIGNAL HEADS, POLES, AND SPAN WIRE FOR EXISTING WEST APPROACH SHALL NOT OPERATE DURING STAGE 4 AND SHALL BE REMOVED.

\*\* WIRES TO GREEN AND YELLOW ARROWS SHALL BE LANDED ON PHASE 3 TERMINALS OF TEMPORARY CONTROLLER CABINET. PHASE 3 SHALL ALLOW TRAFFIC TO MAKE LEFT TURN DURING RAILROAD PREEMPTION.

\*\*\* NEW PHASE 1 SIGNAL HEADS SHALL BE UNCOVERED AND THE ORIGINAL PHASE 1 SIGNAL HEADS SHALL BE COVERED.

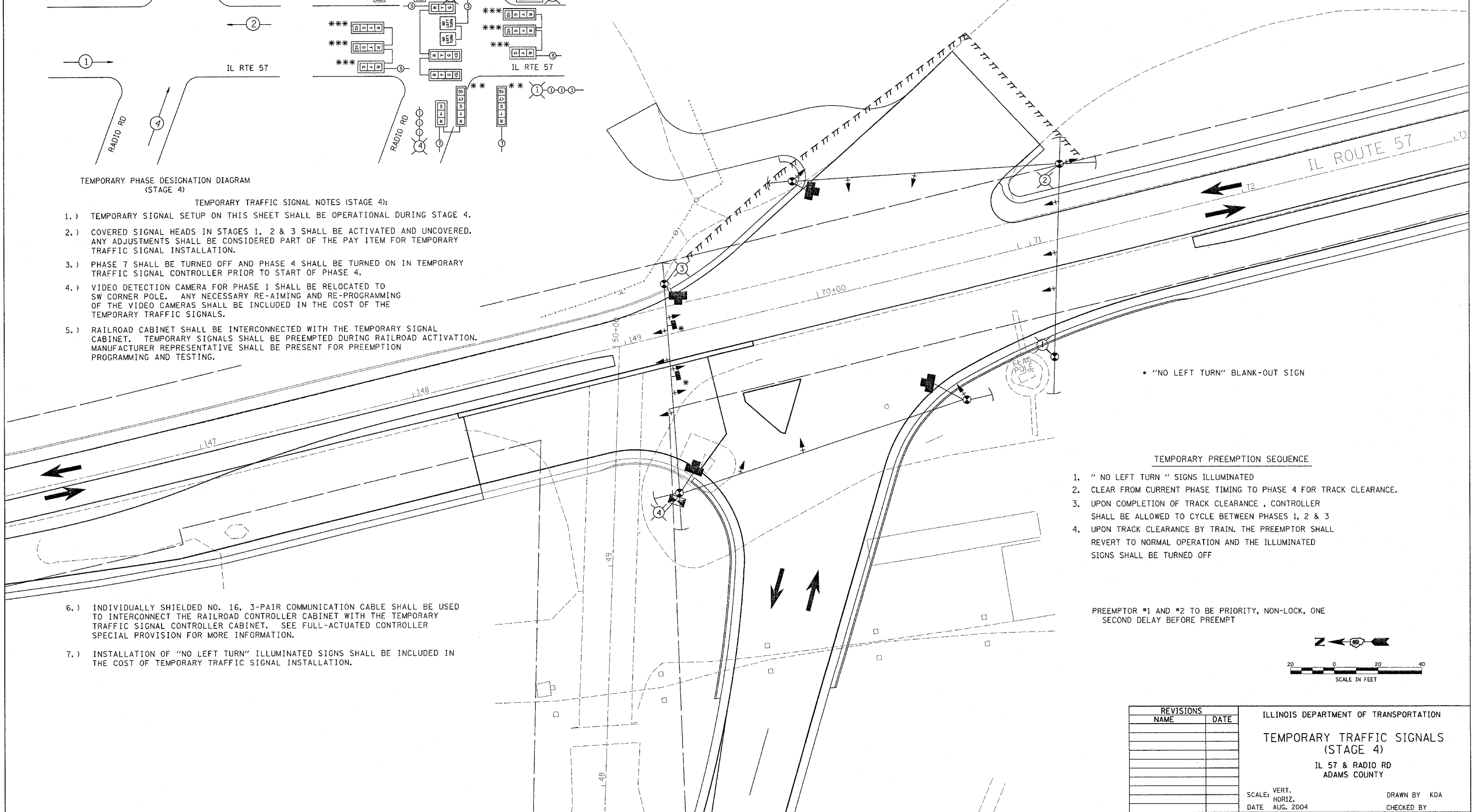


TEMPORARY PHASE DESIGNATION DIAGRAM (STAGE 4)

TEMPORARY TRAFFIC SIGNAL NOTES (STAGE 4):

- 1.) TEMPORARY SIGNAL SETUP ON THIS SHEET SHALL BE OPERATIONAL DURING STAGE 4.
- 2.) COVERED SIGNAL HEADS IN STAGES 1, 2 & 3 SHALL BE ACTIVATED AND UNCOVERED. ANY ADJUSTMENTS SHALL BE CONSIDERED PART OF THE PAY ITEM FOR TEMPORARY TRAFFIC SIGNAL INSTALLATION.
- 3.) PHASE 7 SHALL BE TURNED OFF AND PHASE 4 SHALL BE TURNED ON IN TEMPORARY TRAFFIC SIGNAL CONTROLLER PRIOR TO START OF PHASE 4.
- 4.) VIDEO DETECTION CAMERA FOR PHASE 1 SHALL BE RELOCATED TO SW CORNER POLE. ANY NECESSARY RE-AIMING AND RE-PROGRAMMING OF THE VIDEO CAMERAS SHALL BE INCLUDED IN THE COST OF THE TEMPORARY TRAFFIC SIGNALS.
- 5.) RAILROAD CABINET SHALL BE INTERCONNECTED WITH THE TEMPORARY SIGNAL CABINET. TEMPORARY SIGNALS SHALL BE PREEMPTED DURING RAILROAD ACTIVATION. MANUFACTURER REPRESENTATIVE SHALL BE PRESENT FOR PREEMPTION PROGRAMMING AND TESTING.

- 6.) INDIVIDUALLY SHIELDED NO. 16, 3-PAIR COMMUNICATION CABLE SHALL BE USED TO INTERCONNECT THE RAILROAD CONTROLLER CABINET WITH THE TEMPORARY TRAFFIC SIGNAL CONTROLLER CABINET. SEE FULL-ACTUATED CONTROLLER SPECIAL PROVISION FOR MORE INFORMATION.
- 7.) INSTALLATION OF "NO LEFT TURN" ILLUMINATED SIGNS SHALL BE INCLUDED IN THE COST OF TEMPORARY TRAFFIC SIGNAL INSTALLATION.

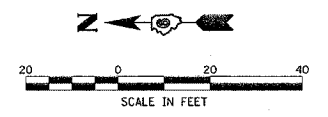


• "NO LEFT TURN" BLANK-OUT SIGN

TEMPORARY PREEMPTION SEQUENCE

1. "NO LEFT TURN" SIGNS ILLUMINATED
2. CLEAR FROM CURRENT PHASE TIMING TO PHASE 4 FOR TRACK CLEARANCE.
3. UPON COMPLETION OF TRACK CLEARANCE, CONTROLLER SHALL BE ALLOWED TO CYCLE BETWEEN PHASES 1, 2 & 3
4. UPON TRACK CLEARANCE BY TRAIN. THE PREEMPTOR SHALL REVERT TO NORMAL OPERATION AND THE ILLUMINATED SIGNS SHALL BE TURNED OFF

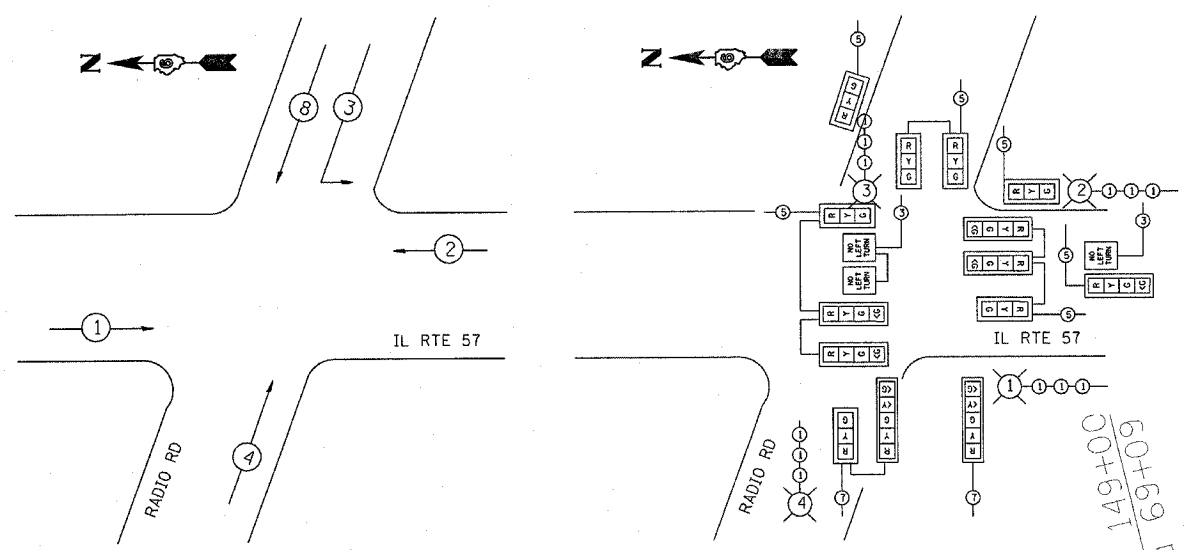
PREEMPTOR #1 AND #2 TO BE PRIORITY, NON-LOCK, ONE SECOND DELAY BEFORE PREEMPT



REVISIONS	
NAME	DATE

ILLINOIS DEPARTMENT OF TRANSPORTATION  
 TEMPORARY TRAFFIC SIGNALS  
 (STAGE 4)  
 IL 57 & RADIO RD  
 ADAMS COUNTY

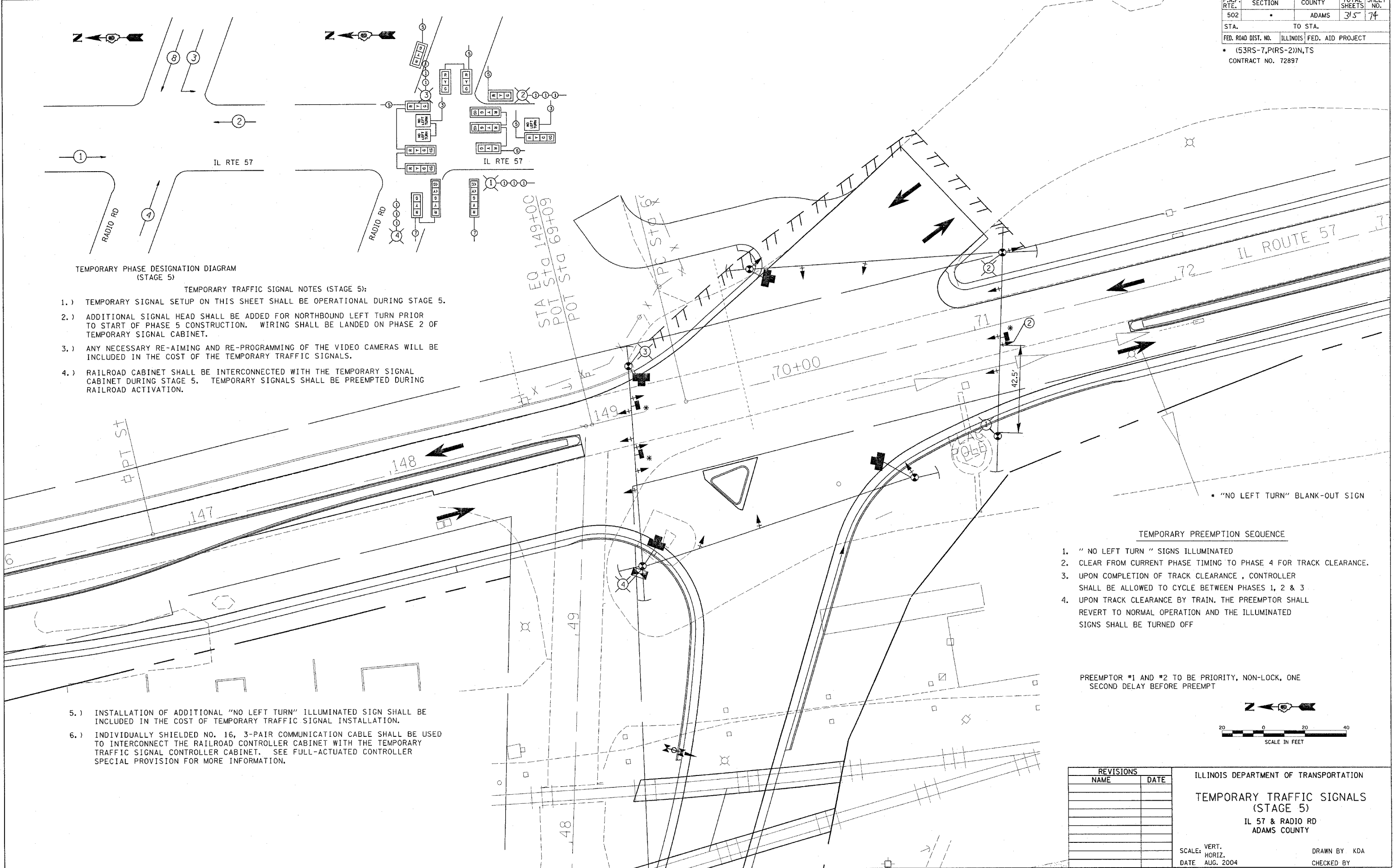
SCALE: VERT.      DRAWN BY KDA  
 HORIZ.            CHECKED BY  
 DATE AUG. 2004



TEMPORARY PHASE DESIGNATION DIAGRAM (STAGE 5)

TEMPORARY TRAFFIC SIGNAL NOTES (STAGE 5):

- 1.) TEMPORARY SIGNAL SETUP ON THIS SHEET SHALL BE OPERATIONAL DURING STAGE 5.
- 2.) ADDITIONAL SIGNAL HEAD SHALL BE ADDED FOR NORTHBOUND LEFT TURN PRIOR TO START OF PHASE 5 CONSTRUCTION. WIRING SHALL BE LANDED ON PHASE 2 OF TEMPORARY SIGNAL CABINET.
- 3.) ANY NECESSARY RE-AIMING AND RE-PROGRAMMING OF THE VIDEO CAMERAS WILL BE INCLUDED IN THE COST OF THE TEMPORARY TRAFFIC SIGNALS.
- 4.) RAILROAD CABINET SHALL BE INTERCONNECTED WITH THE TEMPORARY SIGNAL CABINET DURING STAGE 5. TEMPORARY SIGNALS SHALL BE PREEMPTED DURING RAILROAD ACTIVATION.



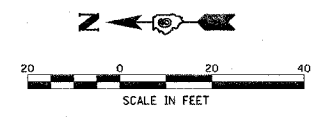
- 5.) INSTALLATION OF ADDITIONAL "NO LEFT TURN" ILLUMINATED SIGN SHALL BE INCLUDED IN THE COST OF TEMPORARY TRAFFIC SIGNAL INSTALLATION.
- 6.) INDIVIDUALLY SHIELDED NO. 16, 3-PAIR COMMUNICATION CABLE SHALL BE USED TO INTERCONNECT THE RAILROAD CONTROLLER CABINET WITH THE TEMPORARY TRAFFIC SIGNAL CONTROLLER CABINET. SEE FULL-ACTUATED CONTROLLER SPECIAL PROVISION FOR MORE INFORMATION.

\* "NO LEFT TURN" BLANK-OUT SIGN

TEMPORARY PREEMPTION SEQUENCE

1. "NO LEFT TURN" SIGNS ILLUMINATED
2. CLEAR FROM CURRENT PHASE TIMING TO PHASE 4 FOR TRACK CLEARANCE.
3. UPON COMPLETION OF TRACK CLEARANCE, CONTROLLER SHALL BE ALLOWED TO CYCLE BETWEEN PHASES 1, 2 & 3
4. UPON TRACK CLEARANCE BY TRAIN. THE PREEMPTOR SHALL REVERT TO NORMAL OPERATION AND THE ILLUMINATED SIGNS SHALL BE TURNED OFF

PREEMPTOR #1 AND #2 TO BE PRIORITY, NON-LOCK, ONE SECOND DELAY BEFORE PREEMPT



REVISIONS	
NAME	DATE

ILLINOIS DEPARTMENT OF TRANSPORTATION  
**TEMPORARY TRAFFIC SIGNALS (STAGE 5)**  
 IL 57 & RADIO RD  
 ADAMS COUNTY

SCALE: VERT. HORIZ. DATE: AUG. 2004

DRAWN BY: KDA  
 CHECKED BY: \_\_\_\_\_