

F.A.U. RTE.	SECTION	COUNTY	TOTAL SHEETS	SHEET NO.
2690	10-00075-00-TL	COOK	15	1
ILLINOIS CONTRACT NO. 63558				

STATE OF ILLINOIS
DEPARTMENT OF TRANSPORTATION
DIVISION OF HIGHWAYS

PLANS FOR PROPOSED FEDERAL AID HIGHWAY

**FAU 2690 (WOLF ROAD)
AT FAU 138 (FULLERTON AVENUE)
TRAFFIC SIGNAL MODERNIZATION
SECTION 10-00075-00-TL
PROJECT NO.: M-9003 (763)
CITY OF NORTHLAKE
COOK COUNTY
JOB NO.: C-91-274-11**

FOR INDEX OF SHEETS
SEE SHEET NO. 2

IDOT STANDARDS

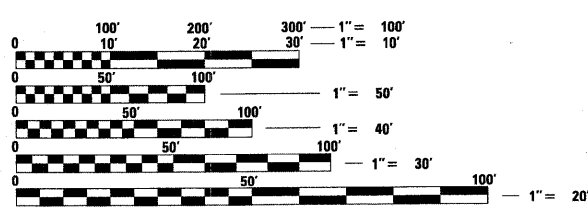
STD No.	DESCRIPTION
000001-06	STANDARD SYMBOLS, ABBREVIATION AND PATTERNS
001006	DECIMAL OF AN INCH AND A FOOT
424001-05	CURB RAMPS FOR SIDEWALKS
606001-04	CONCRETE CURB TYPE B AND COMBINATION CONCRETE CURB AND GUTTER
701006-03	OFF-RD OPERATIONS, 2L, 2W, 4.5 m (15') TO 600 mm (24") FROM PAVEMENT EDGE
701011-02	OFF-RD MOVING OPERATIONS, 2L, 2W, DAY ONLY
701301-04	LANE CLOSURE, 2L, 2W, SHORT TIME OPERATIONS
701501-06	URBAN LANE CLOSURE, 2L, 2W, UNDIVIDED
701701-07	URBAN LANE CLOSURE, MULTILANE INTERSECTION
701801-04	LANE CLOSURE, MULTILANE, 1W OR 2W CROSSWALK OR SIDEWALK CLOSURE
701901-01	TRAFFIC CONTROL DEVICES
720001-01	SIGN PANEL MOUNTING DETAILS
814001-02	HANDHOLES
814006-02	DOUBLE HANDHOLES
857001-01	STANDARDS PHASE DESIGNATION DIAGRAMS AND PHASE SEQUENCES
862001-01	UNINTERRUPTIBLE POWER SUPPLY (UPS)
873001-02	TRAFFIC SIGNAL GROUNDING & BONDING
877001-04	STEEL MAST ARM ASSEMBLY AND POLE
878001-08	CONCRETE FOUNDATION DETAILS
880001-01	SPAN WIRE MOUNTED SIGNALS AND BEACON INSTALLATION
880006-01	TRAFFIC SIGNAL MOUNTING DETAILS
886001-01	DETECTOR LOOP INSTALLATION



CHRISTOPHER B. BURKE ENGINEERING LTD.
9575 West Higgins Road, Suite 600
Rosemont, Illinois 60018 (847) 823-0500

PROGRAM AND OFFICE ENGINEER: CHARLES F. RIDDLE, P.E. 847-705-4406 SCHAUMBURG, ILLINOIS

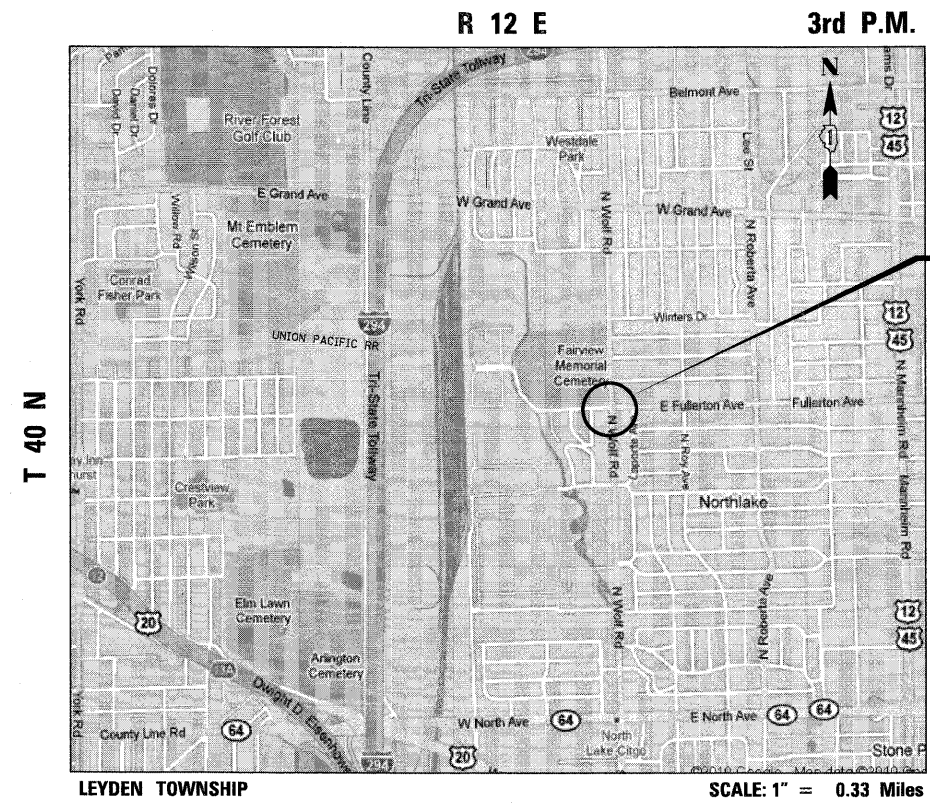
ROUTE	SPEED (MPH)	ADT	CLASSIFICATION
WOLF ROAD	30	14,600	COLLECTOR URBAN
FULLERTON ROAD	30	3,950	COLLECTOR URBAN



FULL SIZE PLANS HAVE BEEN PREPARED USING STANDARD ENGINEERING SCALES. REDUCED SIZED PLANS WILL NOT CONFORM TO STANDARD SCALES. IN MAKING MEASUREMENTS ON REDUCED PLANS, THE ABOVE SCALES MAY BE USED.

J.U.I.E.
JOINT UTILITY LOCATION INFORMATION FOR EXCAVATION
1-800-892-0123
OR 811

CONTRACT NO. 63558



**PROJECT LOCATION
WOLF ROAD AT
FULLERTON AVENUE**

GROSS LENGTH = 605 FT. = 0.11 MILES
NET LENGTH = 605 FT. = 0.11 MILES

STATE OF ILLINOIS
DEPARTMENT OF TRANSPORTATION
DIVISION OF HIGHWAYS

APPROVED: *[Signature]*
CITY OF NORTHLAKE REPRESENTATIVE

PASSED: FEBRUARY 15, 2011
[Signature]
DISTRICT 1 ENGINEER OF LOCAL ROADS AND STREETS

RELEASING FOR BID
BASED ON LIMITED
REVIEW: FEBRUARY 15, 2011
[Signature]
DEPUTY DIRECTOR OF HIGHWAYS, REGION 1 ENGINEER

**PRINTED BY THE AUTHORITY
OF THE STATE OF ILLINOIS**

[Signature] 01-21-2011
ENGINEER DATE

GEORGE M. ZIEGLER
ILLINOIS REGISTRATION No. 062-045853
EXPIRATION DATE: 11-30-2011
PROFESSIONAL DESIGN FIRM No.: 184-001742
EXPIRATION DATE: 04-30-2011